

O.D.O.T. DISTRICT 2 SURVEY OFFICE (USE ONLY)

PERSONNEL

REFERENCE NO. 23 A

SHEET 7 OF 45

NOTES HUSS

DATE 8/18/09

ROUTE SR 199

H.C. CANTERBURY

WEATHER CLOUDY

COUNTY WOOD

R.C. HUSS

TEMP. 80°

TOWNSHIP MONTGOMERY

SECTION 4

DWG BY RHOADES PID 101286

T 4 N R 12 E

TYPE MONUMENT P.K. NAIL

ON SURFACE - ~~BELOW~~ ON

OFFSET Q PAVEMENT ON LT : RT

11.7' TO RT EDGE PAVEMENT

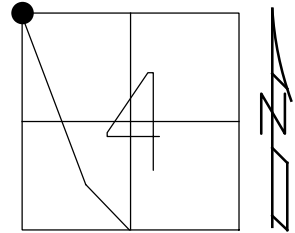
STATION: 388+01

HORIZ.DATUM: NAD83(2011)

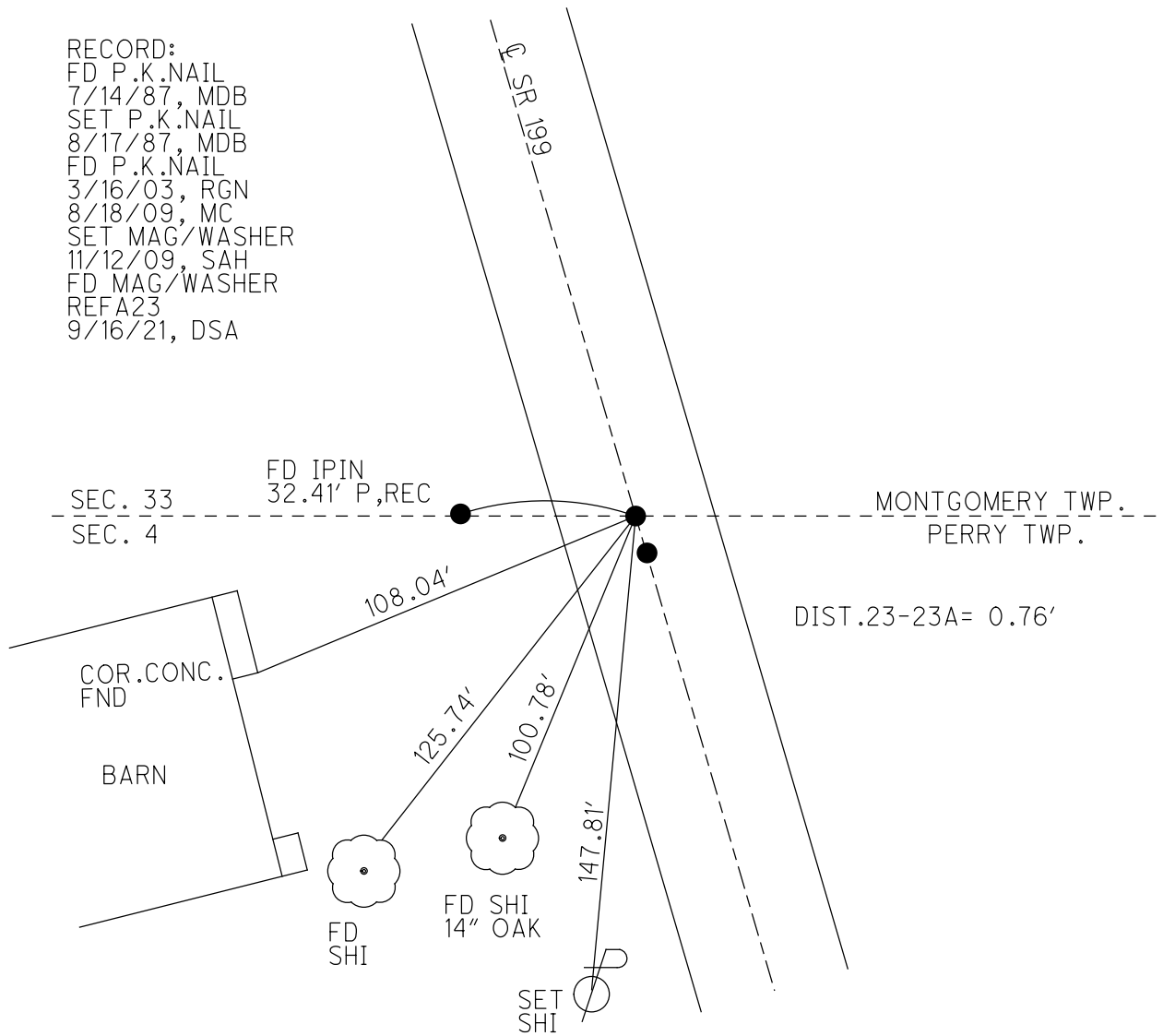
GEOID: 2012A

GRID: NORTHING: 579695.938

EASTING: 1694533.128



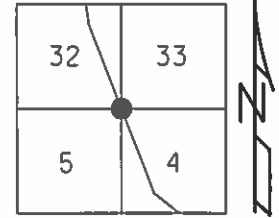
RECORD:  
 FD P.K.NAIL  
 7/14/87, MDB  
 SET P.K.NAIL  
 8/17/87, MDB  
 FD P.K.NAIL  
 3/16/03, RGN  
 8/18/09, MC  
 SET MAG/WASHER  
 11/12/09, SAH  
 FD MAG/WASHER  
 REFA23  
 9/16/21, DSA



O.D.O.T. DISTRICT 2 SURVEY OFFICE (USE ONLY)

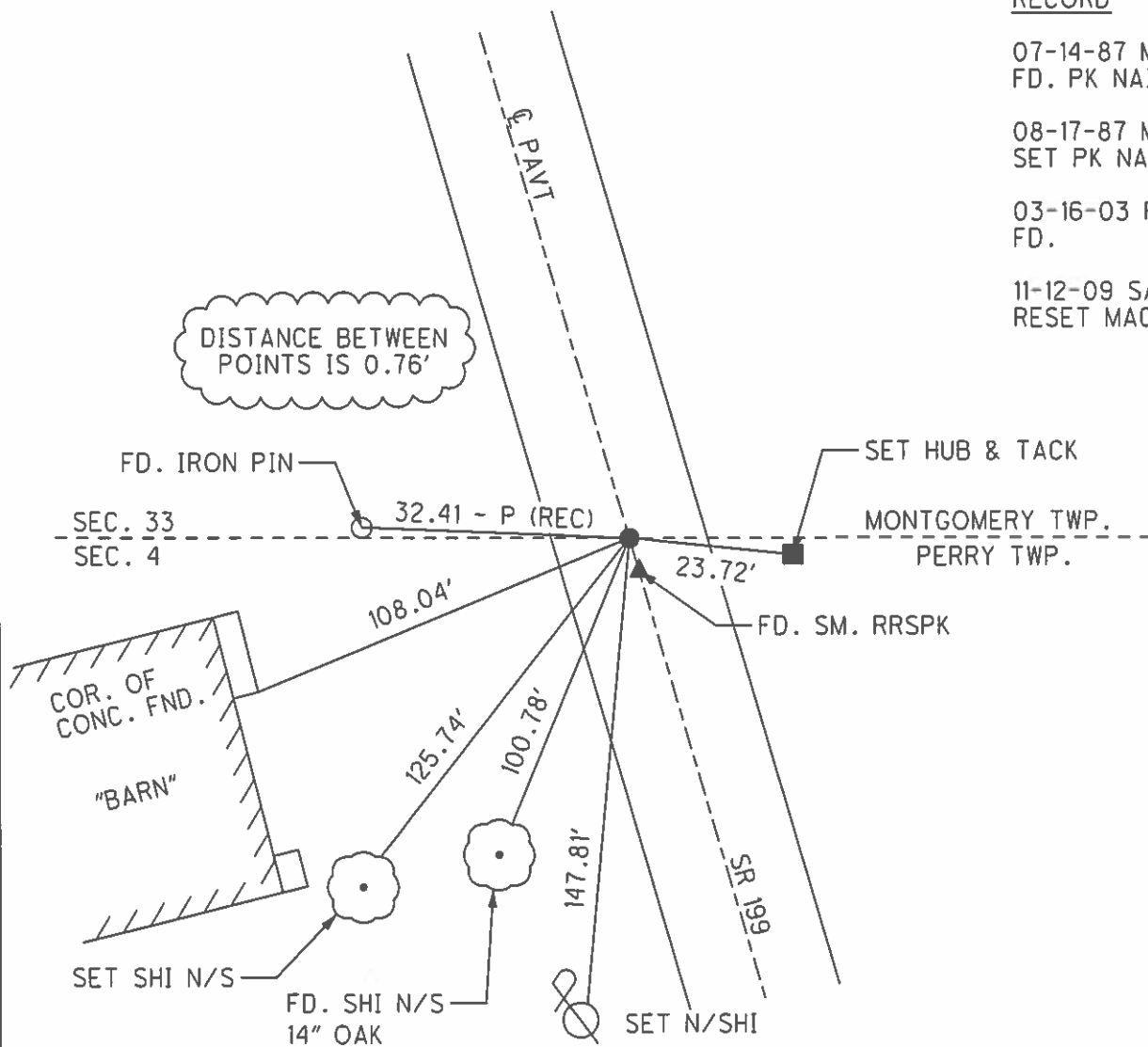
PERSONNEL \_\_\_\_\_ REFERENCE NO. 23A SHEET 7 OF 45  
 NOTES HUSS DATE 08-18-09 ROUTE SR 199  
 H.C. CANTERBURY WEATHER CLOUDY COUNTY WOOD  
 R.C. HUSS TEMP. 80° F TOWNSHIP MONTGOMERY  
 \_\_\_\_\_ SECTION 32  
 \_\_\_\_\_ T 4 N R 12 E

TYPE MONUMENT \_\_\_\_\_ P.K. NAIL  
 ON SURFACE - ~~BELOW~~ ON \_\_\_\_\_  
~~LEFT~~ - Q PAV'T - ~~RIGHT~~ ON \_\_\_\_\_  
11.7' TO RT. EDGE PAVEMENT  
 S.L.M. 388+01



Grid: Northing: 579696.000 Easting: 1694533.376

- RECORD
- 07-14-87 MDB  
FD. PK NAIL
  - 08-17-87 MDB  
SET PK NAIL
  - 03-16-03 RGN  
FD.
  - 11-12-09 SAH  
RESET MAG/W



# O.D.O.T. DISTRICT 2 SURVEY OFFICE

PERSONNEL \_\_\_\_\_

REFERENCE NO. 23

SHEET \_\_\_\_\_ OF \_\_\_\_\_

NOTES BARNHISEL

H.C. Loehrke

R.C. HOFFMANN

DATE 7-14-87

WEATHER cloudy

TEMP. +70°

ROUTE 199

COUNTY WOOD

TOWNSHIP Montgomery

SECTION 32

T 4 N R 12 E

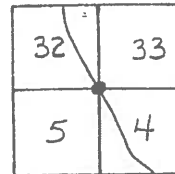
TYPE MONUMENT 5m RR Spk & P.K. Nail

ON SURFACE - BELOW yes

LEFT - C. PAV'T. - RIGHT yes

10.6 TO RT EDGE PAVEMENT

S.L.M. 388+01 0.74 Between



Record  
 P.I. STA 153+16.55  
 $\Delta = 0^{\circ} - 07' \text{ Rt (Rec. meas.)}$   
 Set RR Spk

Set 5m RR Spk & P.K.  
 8-17-87  
 JLP/B

