

O.D.O.T. DISTRICT 2 SURVEY OFFICE (USE ONLY)

PERSONNEL

REFERENCE NO. 30 A

SHEET 17 OF 45

NOTES HUSS

DATE 8/18/09

ROUTE SR 199

H.C. CANTERBURY

WEATHER CLOUDY

COUNTY WOOD

R.C. HUSS

TEMP. 86°

TOWNSHIP MONTGOMERY

SECTION 20

DWG BY RHOADES

PID 101286

T 4 N R 12 E

TYPE MONUMENT P.K.NAIL

ON SURFACE - ~~BELOW~~ ON

OFFSET \varnothing PAVEMENT 0.3' LT : ~~RT~~

- TO - EDGE PAVEMENT

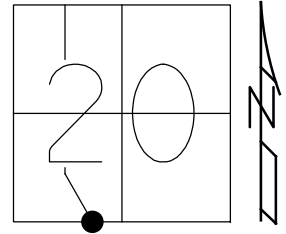
STATION: 499+35

HORZ.DATUM: NAD83(2011)

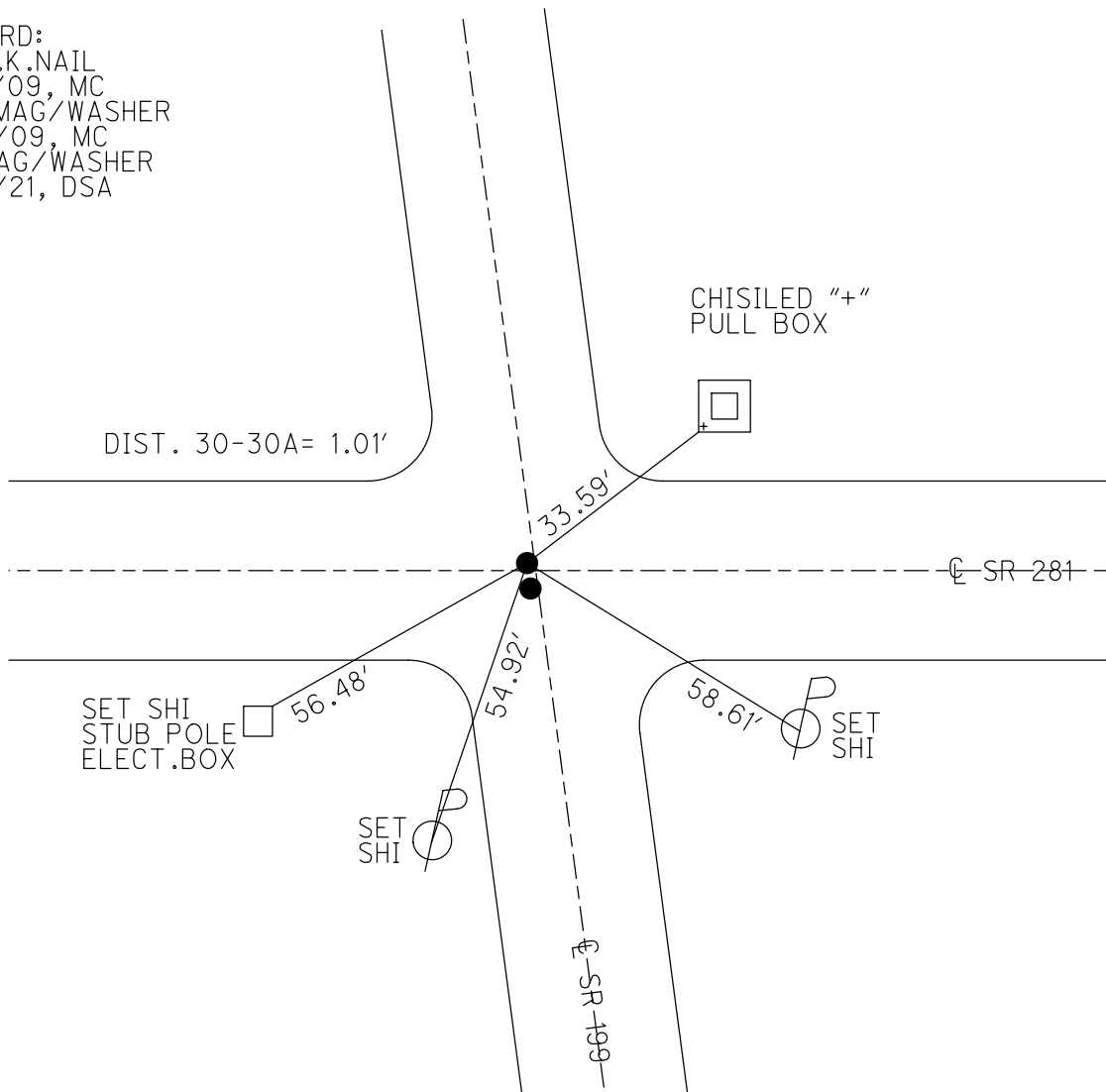
GEOID: 2012A

GRID: NORTHING: 590309.092

EASTING: 1691280.411



RECORD:
 FD P.K.NAIL
 8/18/09, MC
 SET MAG/WASHER
 11/10/09, MC
 FD MAG/WASHER
 9/10/21, DSA

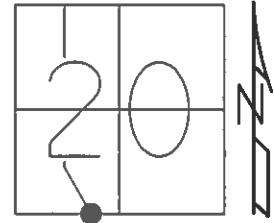


O.D.O.T. DISTRICT 2 SURVEY OFFICE (USE ONLY)

PERSONNEL	REFERENCE NO. <u>30A</u>	SHEET <u>17</u> OF <u>45</u>
NOTES <u>HUSS</u>	DATE <u>08-18-09</u>	ROUTE <u>SR 199</u>
H.C. <u>CANTERBURY</u>	WEATHER <u>SUNNY</u>	COUNTY <u>WOOD</u>
R.C. <u>HUSS</u>	TEMP. <u>86° F</u>	TOWNSHIP <u>MONTGOMERY</u>
		SECTION <u>20</u>
		T <u>4</u> N R <u>12</u> E

TYPE MONUMENT PK NAIL
 ON SURFACE - ~~BELOW~~ ON
 LEFT - ☉ PAV'T - ~~RIGHT~~ 0.3', ON ☉ SR 281
 TO EDGE PAVEMENT
 S.L.M. 499+35

Grid: Northing: 590309.092 Easting: 1691280.411



RECORD
 11-10-09 MC
 RESET MAG/W

