

O.D.O.T. DISTRICT 2 SURVEY OFFICE (USE ONLY)

PERSONNEL

REFERENCE NO. 39

SHEET 32 OF 45

NOTES HUSS

DATE 8/24/09

ROUTE SR 199

H.C. CANTERBURY

WEATHER SUNNY

COUNTY WOOD

R.C. CORDES

TEMP. 84°

TOWNSHIP MONTGOMERY

SECTION 8

DWG BY RHOADES

PID 101286

T 4 N R 12 E

TYPE MONUMENT MONBOX

ON SURFACE - ~~BELOW~~ ON

OFFSET  $\varnothing$  PAVEMENT 1.0' LT : RT

11.1' TO LT EDGE PAVEMENT

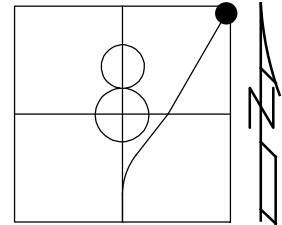
STATION: 659+00

HORIZ.DATUM: NAD83(2011)

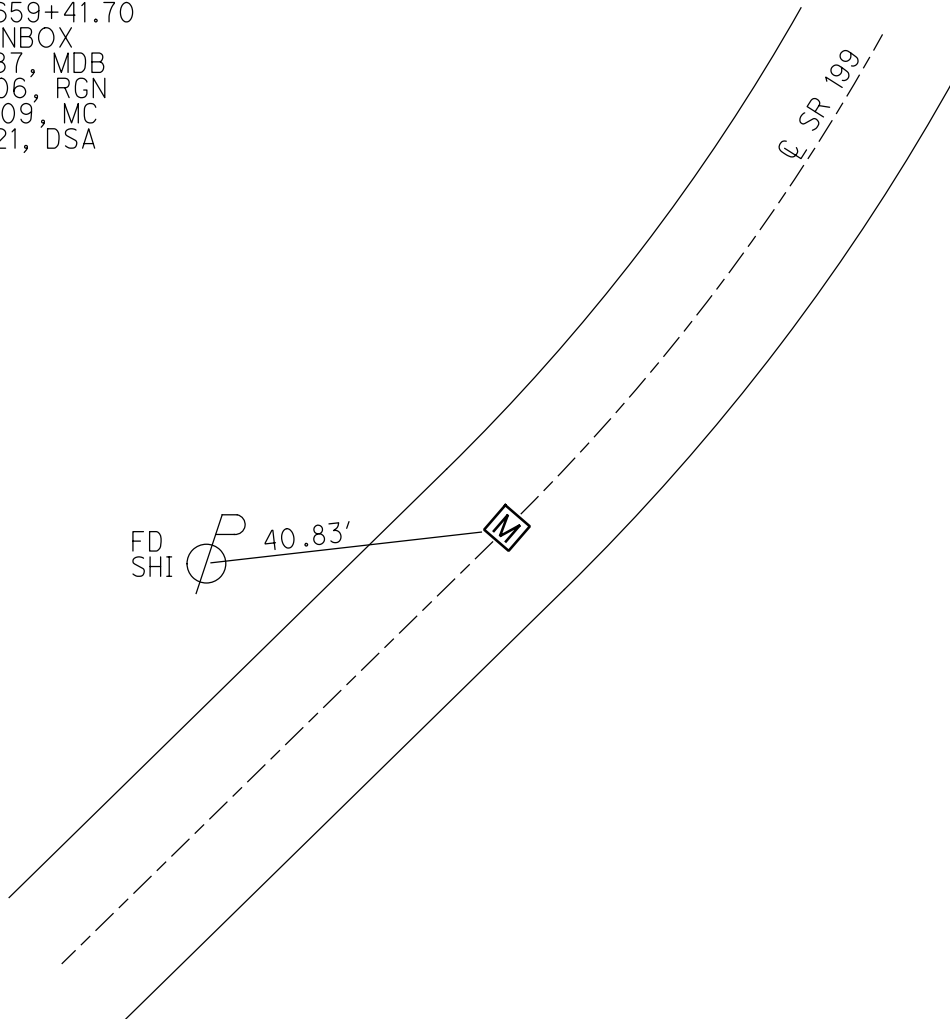
GEOID: 2012A

GRID: NORTHING: 605109.642

EASTING: 1694764.390



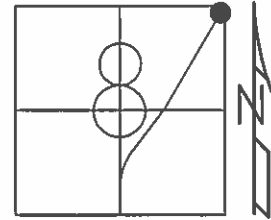
RECORD: T.S.  
STA. 659+41.70  
FD MONBOX  
7/15/87, MDB  
3/16/06, RGN  
8/24/09, MC  
9/16/21, DSA



O.D.O.T. DISTRICT 2 SURVEY OFFICE (USE ONLY)

PERSONNEL \_\_\_\_\_ REFERENCE NO. 39 SHEET 32 OF 45  
 NOTES HUSS DATE 08-24-09 ROUTE SR 199  
 H.C. CANTERBURY WEATHER SUNNY COUNTY WOOD  
 R.C. CORDES TEMP. 84° F TOWNSHIP MONTGOMERY  
 SECTION 8  
 T 4 N R 12 E

TYPE MONUMENT \_\_\_\_\_ MON. BOX \_\_\_\_\_  
 ON SURFACE - ~~BELOW~~ ON \_\_\_\_\_  
 LEFT - ℄ PAV'T - ~~RIGHT~~ \_\_\_\_\_ 1.0'  
11.1' TO LT. EDGE PAVEMENT  
 S.L.M. 659+00

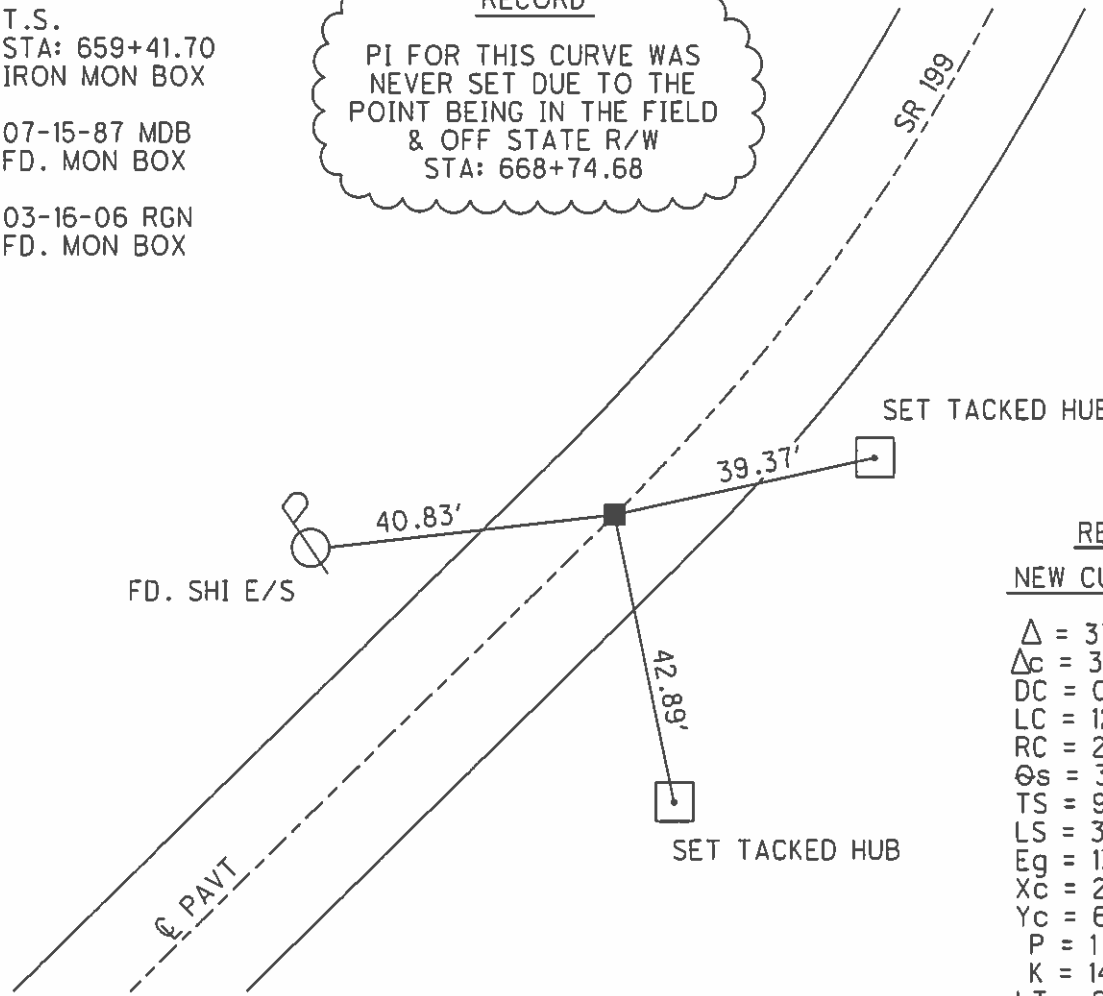


Grid: Northing: 605109.642 Easting: 1694764.390

RECORD

T.S.  
 STA: 659+41.70  
 IRON MON BOX  
 07-15-87 MDB  
 FD. MON BOX  
 03-16-06 RGN  
 FD. MON BOX

RECORD  
 PI FOR THIS CURVE WAS  
 NEVER SET DUE TO THE  
 POINT BEING IN THE FIELD  
 & OFF STATE R/W  
 STA: 668+74.68



RECORD  
NEW CURVE DATA  
 $\Delta = 37^{\circ}-42'$  LT.  
 $\Delta_c = 30^{\circ}-12'$   
 DC =  $02^{\circ}-30'$   
 LC = 1208.00'  
 RC = 2291.83'  
 $\Theta_s = 3.75'$   
 TS = 932.98'  
 LS = 300'  
 Eg = 131.6'  
 Xc = 299.87'  
 Yc = 6.54'  
 P = 1.63'  
 K = 149.93'  
 LT = 200.04'  
 ST = 100.04'  
 LC = 299.94'

# O.D.O.T. DISTRICT 2 SURVEY OFFICE

PERSONNEL

REFERENCE NO. 39 SHEET      OF     

NOTES BARNHISEL

H.C. Loehcke

R.C. Hoffman

DATE 7-15-87

WEATHER Sunny

TEMP. +75°

ROUTE 199

COUNTY Wood

TOWNSHIP Montgomery

SECTION 8

T 4 N R 12 E

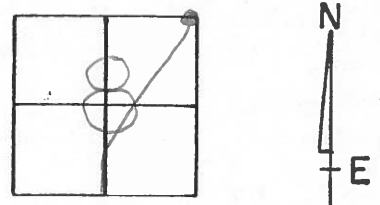
TYPE MONUMENT Mon Boxes

ON SURFACE - BELOW yes

LEFT - &lt; PAV'T. - RIGHT yes

T.S. 12.070 R+ EDGE PAVEMENT

S.L.M. T.S. 658+97 P.I.      + S.T. 677+06



*New Curve Data*

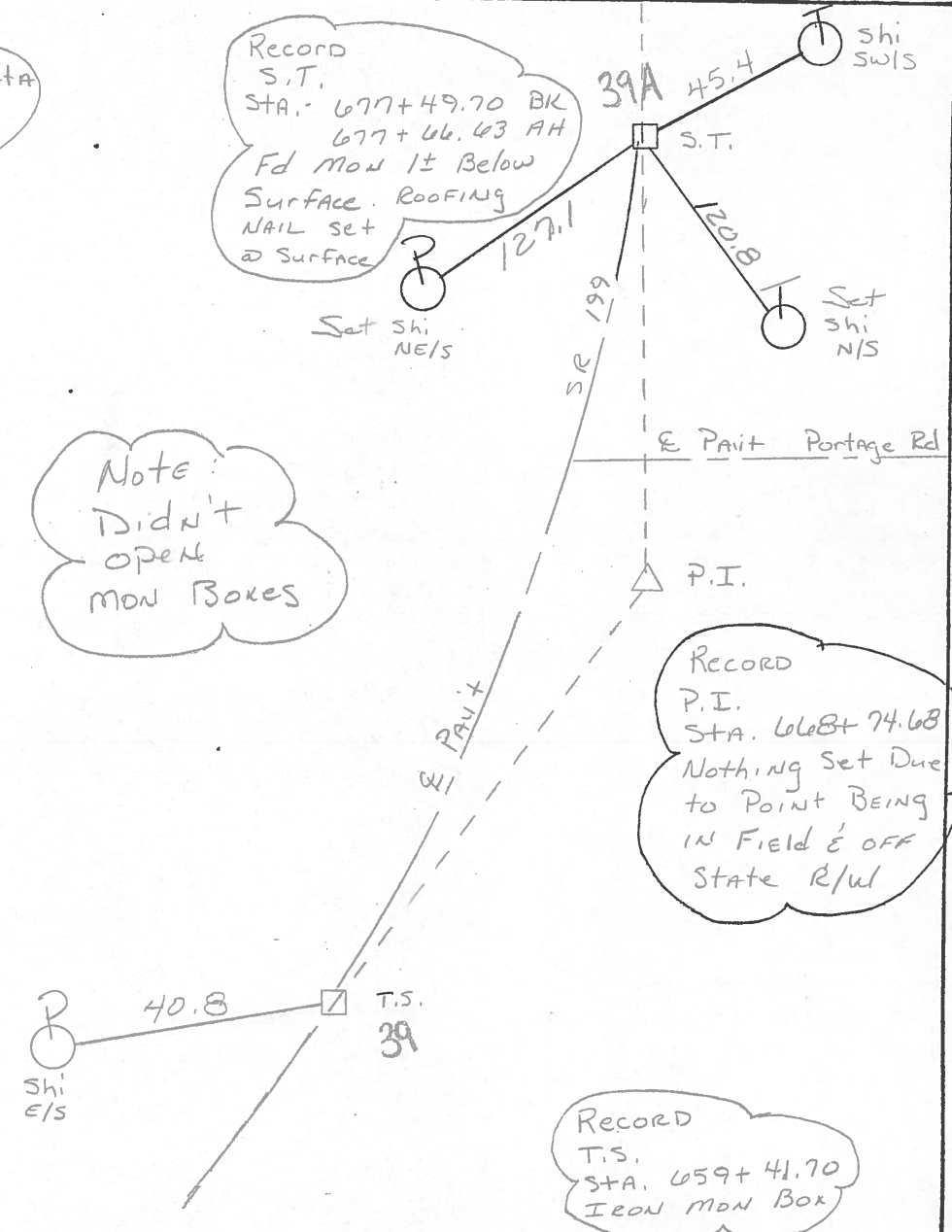
$\Delta = 37^\circ - 42'$   
 $\Delta c = 30^\circ - 12'$   
 $Dc = 2^\circ - 30'$   
 $Lc = 1208.00$   
 $Rc = 2291.83$   
 $\Theta_s = 3.75'$   
 $Ts = 932.98$   
 $Ls = 300'$   
 $Eg = 131.6$   
 $Xc = 299.87$   
 $yc = 4.54'$   
 $P = 1.63$   
 $K = 149.93'$   
 $Lt = 200.04$   
 $S.T. = 100.04$   
 $Lc = 299.94$

*Record S.T.*  
 STA. 677+49.70 BK  
677+46.43 AH  
 Fd Mon It Below  
 Surface. Roofing  
 NAIL SET  
 @ Surface

*Note:*  
 Didn't  
 open  
 mon Boxes

*Record P.I.*  
 STA. 668+74.68  
 Nothing Set Due  
 to Point BEING  
 IN FIELD & OFF  
 State R/W

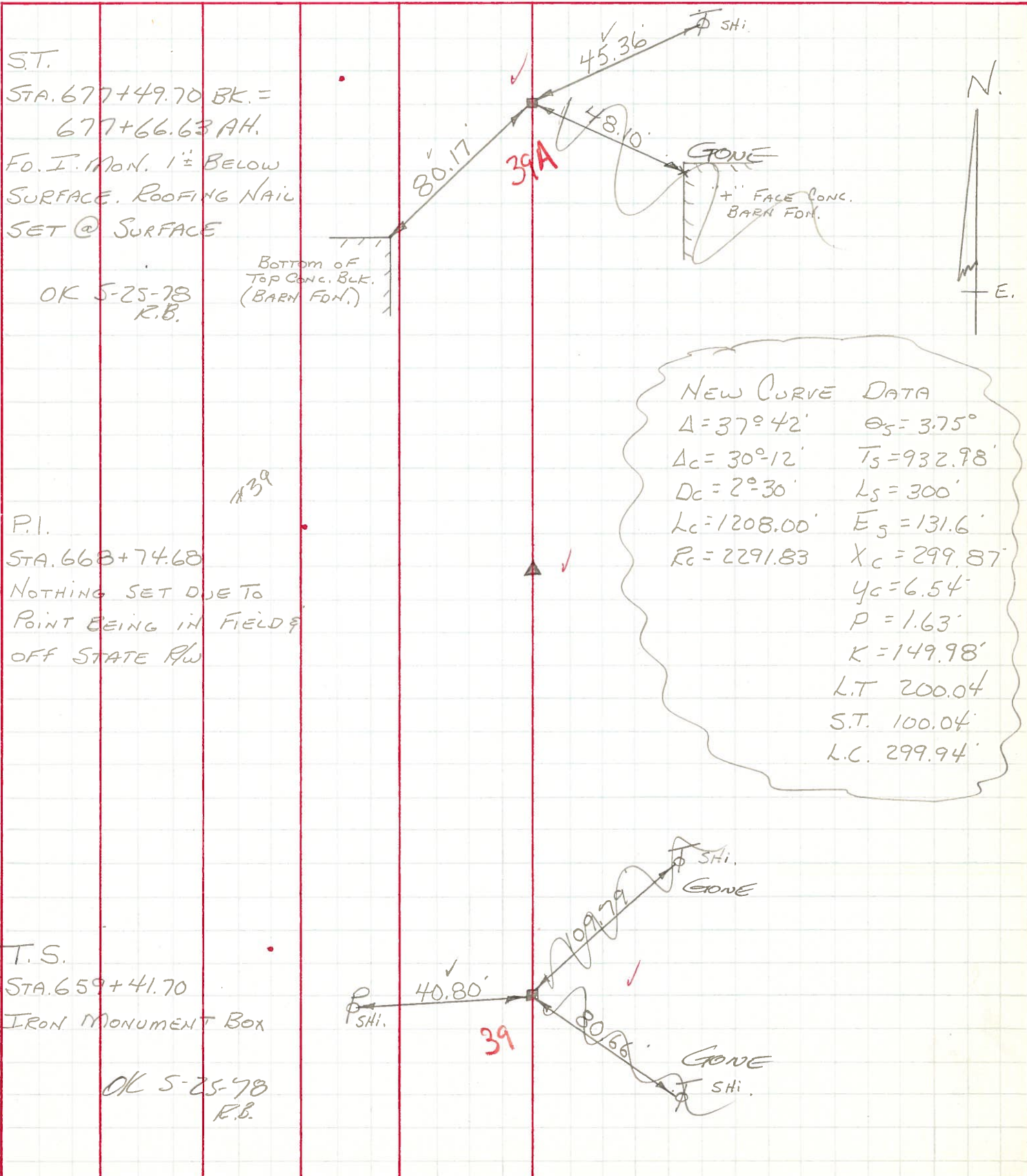
*Record T.S.*  
 STA. 659+41.70  
 IRON MON BOX



PERSONNEL TITLE PERSONNEL TITLE  
 BURNSIDE \_\_\_\_\_  
 SMITH \_\_\_\_\_  
 BOWERS \_\_\_\_\_  
 HOLCOMBE \_\_\_\_\_

COUNTY Wood DATE 9-29-71  
 S. R. 199 WEATHER CLOUDY  
 SEC. CURVE @ PORTAGE RD. TEMP. +76°

DESCRIPTION LEFT CENTER LINE RIGHT JOB NO.



NEW CURVE DATA  
 $\Delta = 37^\circ 42'$      $\theta_s = 3.75^\circ$   
 $\Delta_c = 30^\circ 12'$      $T_s = 932.98'$   
 $D_c = 2^\circ 30'$      $L_s = 300'$   
 $L_c = 1208.00'$      $E_s = 131.6'$   
 $R_c = 2291.83$      $X_c = 299.87'$   
 $Y_c = 6.54'$   
 $P = 1.63'$   
 $K = 149.98'$   
 L.T. 200.04'  
 S.T. 100.04'  
 L.C. 299.94'