

O.D.O.T. DISTRICT 2 SURVEY OFFICE (USE ONLY)

PERSONNEL

REFERENCE NO. 44

SHEET 41 OF 45

NOTES HUSS

DATE 8/25/09

ROUTE SR 199

H.C. CANTERBURY

WEATHER SUNNY

COUNTY WOOD

R.C. HUSS

TEMP. 85°

TOWNSHIP MONTGOMERY

SECTION 32

DWG BY RHOADES PID 101286

T 5 N R 12 E

TYPE MONUMENT MONBOX W/1" IPIN

ON SURFACE - ~~BELOW~~ ON

OFFSET CL PAVEMENT 0.5' LT : RT

13.0' TO RT EDGE PAVEMENT

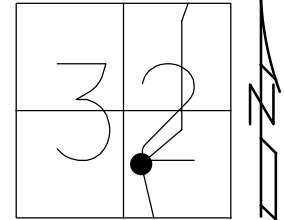
STATION: 743+58

HORZ. DATUM: NAD83(2011)

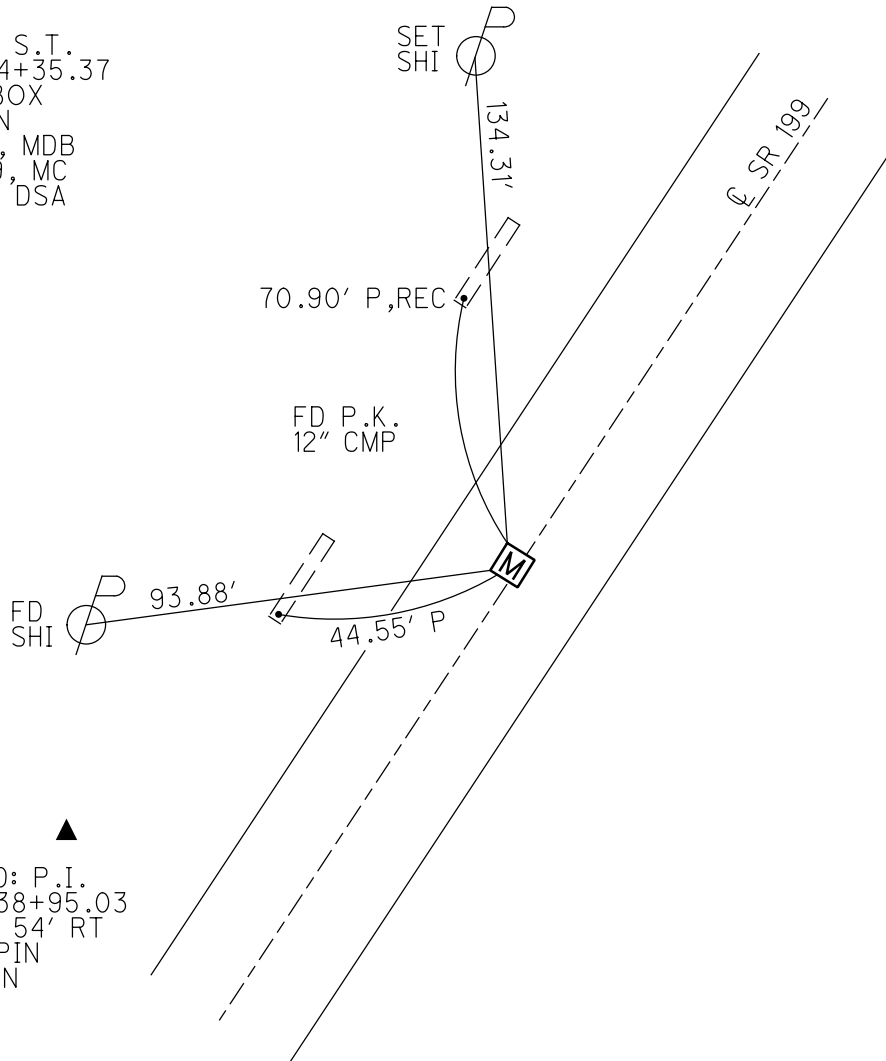
GEOID: 2012A

GRID: NORTHING: 612922.370

EASTING: 1693879.670



RECORD: S.T.
 STA. 744+35.37
 FD MONBOX
 W/1" IPIN
 7/15/87, MDB
 8/25/09, MC
 9/16/21, DSA

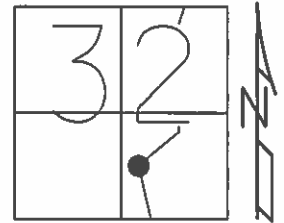


RECORD: P.I.
 STA: 738+95.03
 $\Delta = 24^\circ 54' RT$
 FD 1" IPIN
 IN CMON

O.D.O.T. DISTRICT 2 SURVEY OFFICE (USE ONLY)

PERSONNEL	REFERENCE NO. <u>44</u>	SHEET <u>41</u> OF <u>45</u>
NOTES <u>HUSS</u>	DATE <u>08-25-09</u>	ROUTE <u>SR 199</u>
H.C. <u>CANTERBURY</u>	WEATHER <u>SUNNY</u>	COUNTY <u>WOOD</u>
R.C. <u>HUSS</u>	TEMP. <u>85° F</u>	TOWNSHIP <u>FREEDOM</u>
		SECTION <u>32</u>
		T <u>5</u> N R <u>12</u> E

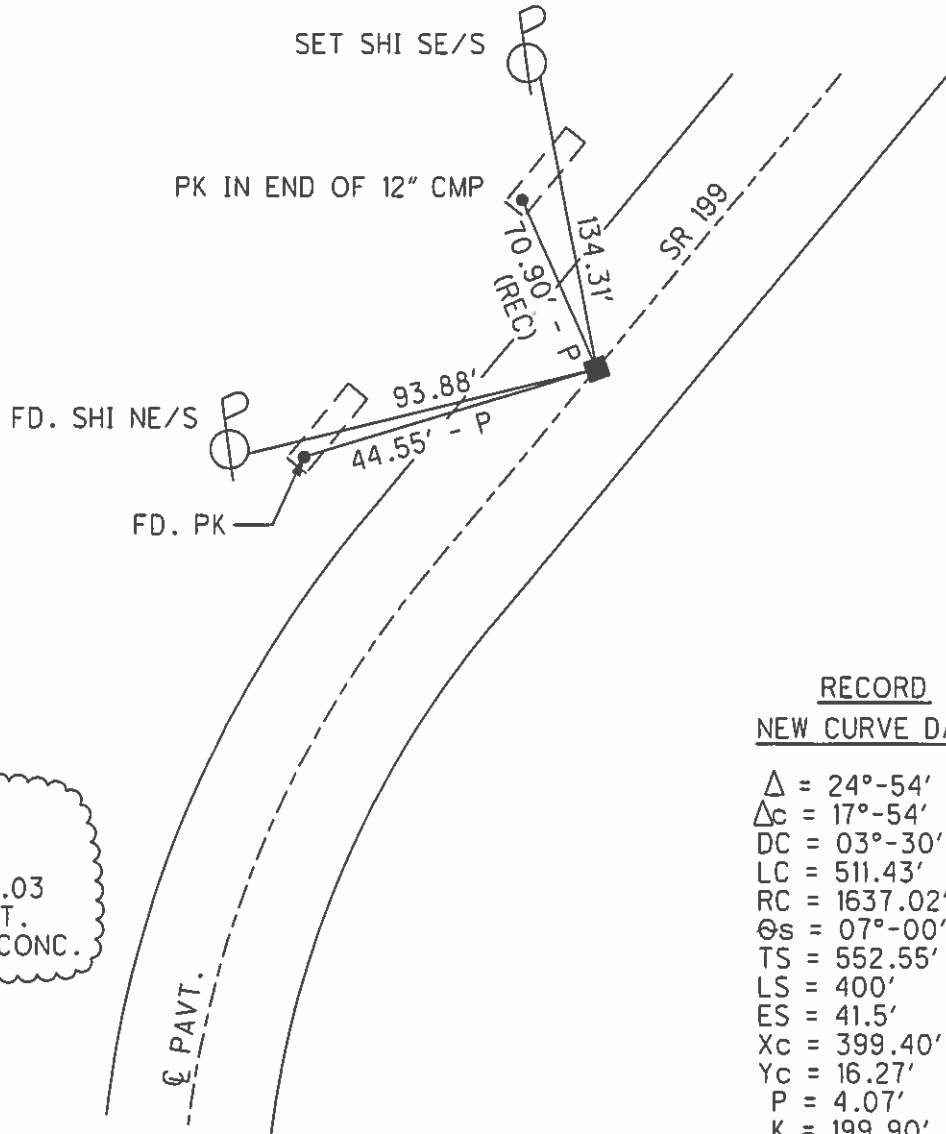
TYPE MONUMENT MON. BOX
 ON SURFACE - ~~BELOW~~ ON
 LEFT - Q PAV'T - ~~RIGHT~~ 0.5'
13.0' TO RT. EDGE PAVEMENT
 S.L.M. 743+58
 Grid: Northing: 612922.370 Easting: 1693879.670



RECORD

S.T.
 STA: 744+35.37
 1" IRON PIN IN
 MON BOX

07-15-87 MDB
 FD. MON BOX



RECORD
 P.I.
 STA: 738+95.03
 $\Delta = 24^\circ-54'$ RT.
 1" IRON PIN IN CONC.

RECORD
NEW CURVE DATA

$\Delta = 24^\circ-54'$ RT.
 $\Delta_c = 17^\circ-54'$
 DC = $03^\circ-30'$
 LC = 511.43'
 RC = 1637.02'
 $\Theta_s = 07^\circ-00'$
 TS = 552.55'
 LS = 400'
 ES = 41.5'
 Xc = 399.40'
 Yc = 16.27'
 P = 4.07'
 K = 199.90'

O.D.O.T. DISTRICT 2 SURVEY OFFICE (USE ONLY)

PERSONNEL

REFERENCE NO. 44

SHEET 5 OF 7

NOTES BARNHISEL

DATE 7/15/87

ROUTE 199

H.C. LOEHRKE

WEATHER SUNNY

COUNTY WOOD

R.C. HOFFMAN

TEMP. 75°

TOWNSHIP FREEDOM

SECTION 32

T 5 N R 12 E

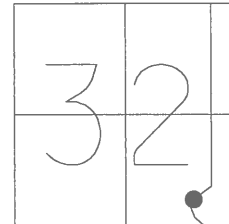
TYPE MONUMENT MON. BOX

ON SURFACE - ~~BELOW~~ ON

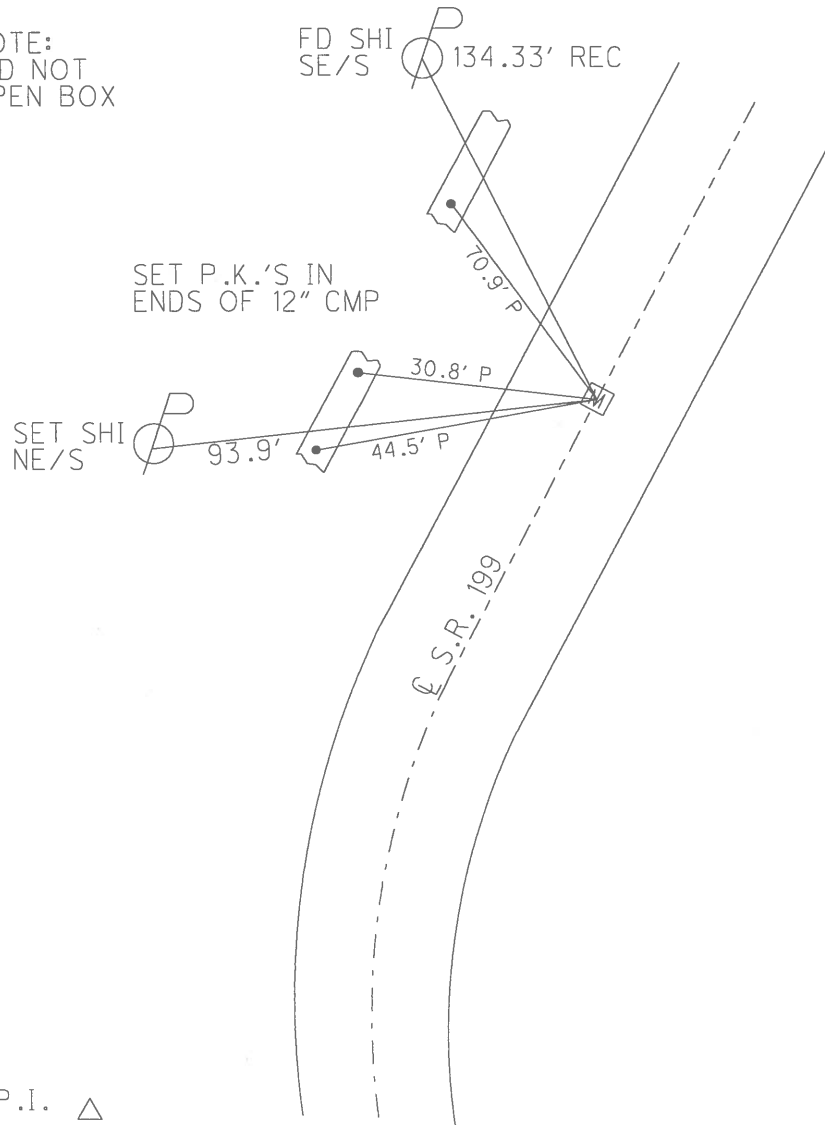
LEFT - Q PAV'T - ~~RIGHT~~ ON

11.8' TO RT EDGE PAVEMENT

S.L.M. 743+57



NOTE:
DID NOT
OPEN BOX



RECORD:
S.T.
sta. 744+35.37
1" Iron Pin IN
MON BOX

NEW CURVE DATA:
 $\Delta = 24^{\circ}54'$ RT.
 $\Delta c = 17^{\circ}54'$
 $Dc = 3^{\circ}30'$
 $Lc = 511.43'$
 $Rc = 1637.02'$
 $Back T = 371.09'$
 $\Theta_s = 7^{\circ}00'$
 $Fwd. Ts = 552.55'$
 $Fwd Ls = 400'$
 $Es = 41.5'$
 $Xc = 399.40'$
 $Yc = 16.27'$
 $P = 4.07'$
 $K = 199.90'$

RECORD
P.I.
sta. 738+95.03
 $\Delta = 24^{\circ}54'$ RT.
1" Iron Pin IN Conc.

P.I. Δ

O.D.O.T. DISTRICT 2 SURVEY OFFICE

PERSONNEL

REFERENCE NO. 44

SHEET OF

NOTES BARNASEU

H.C. Loehrer

R.C. HOFFMAN

DATE 7-15-87

WEATHER SUNNY

TEMP. +75°

ROUTE 199

COUNTY Wood

TOWNSHIP FREEDOM

SECTION 32

T 5 N R 12 E

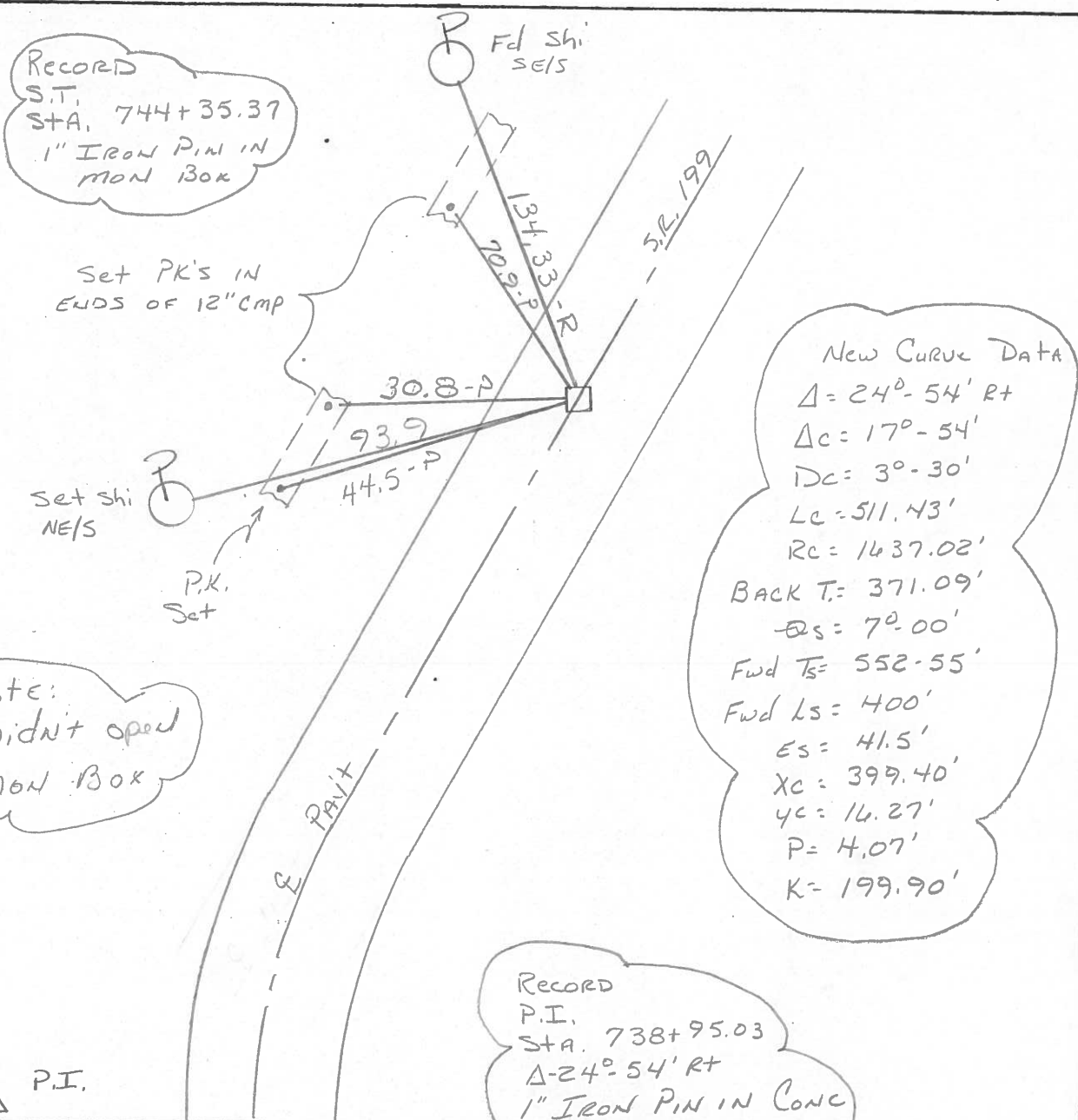
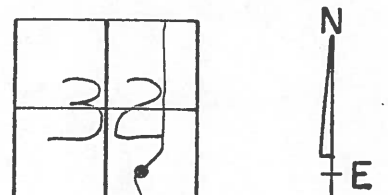
TYPE MONUMENT Mon Box

ON SURFACE - BELOW yes

LEFT- & PAV'T. - RIGHT yes

11.8 TO RT EDGE PAVEMENT

S.L.M. 743 + 57



RECORD
S.T.
STA. 744+35.37
1" IRON PIN IN
MON BOX

Set PK'S IN
ENDS OF 12" CMP

Note:
Didn't open
Mon Box

New Curve Data
 $\Delta = 24^\circ - 54' \text{ RT}$
 $\Delta c = 17^\circ - 54'$
 $DC = 3^\circ - 30'$
 $Lc = 511.43'$
 $Rc = 1437.02'$
 BACK T: 371.09'
 $\theta_s = 7^\circ - 00'$
 Fwd T: 552.55'
 Fwd Ls = 400'
 $Es = 41.5'$
 $Xc = 399.40'$
 $yc = 14.27'$
 $P = 4.07'$
 $K = 199.90'$

RECORD
P.I.
STA. 738+95.03
 $\Delta = 24^\circ - 54' \text{ RT}$
 1" IRON PIN IN CONC

△ P.I.

County WOOD S.R. 199

Date 10-4-71 (CHKD. 5-25-78)

Township FREEDOM

Weather CLEAR

Section 32

Temp. 71°

T N, R E

Personnel BURNSIDE

29	28
32	33

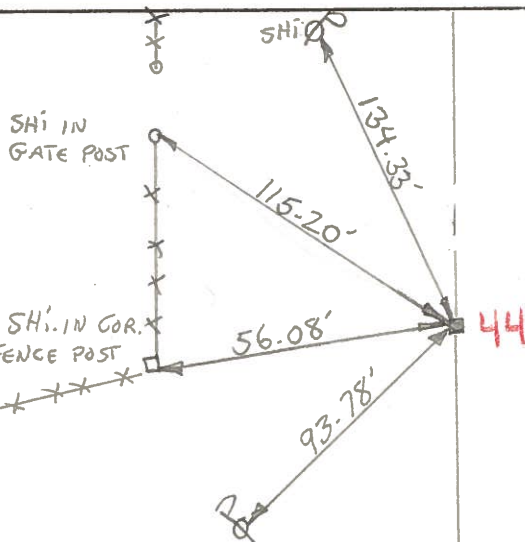


SMITH

BOWERS

HOLCOMBE

#44

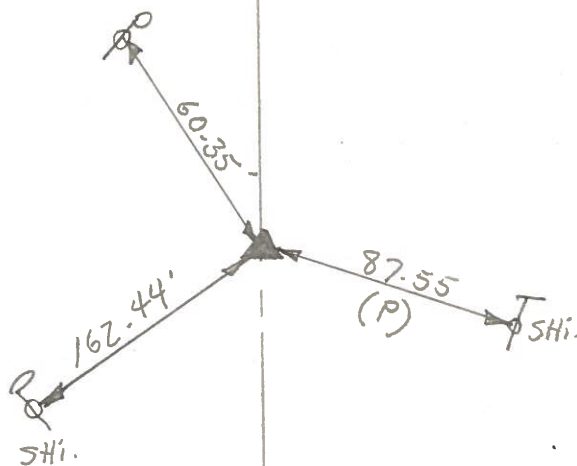


S.T.
STA. 744+35.37
1" IRON PIN IN
MON. BOX

NEW CURVE DATA

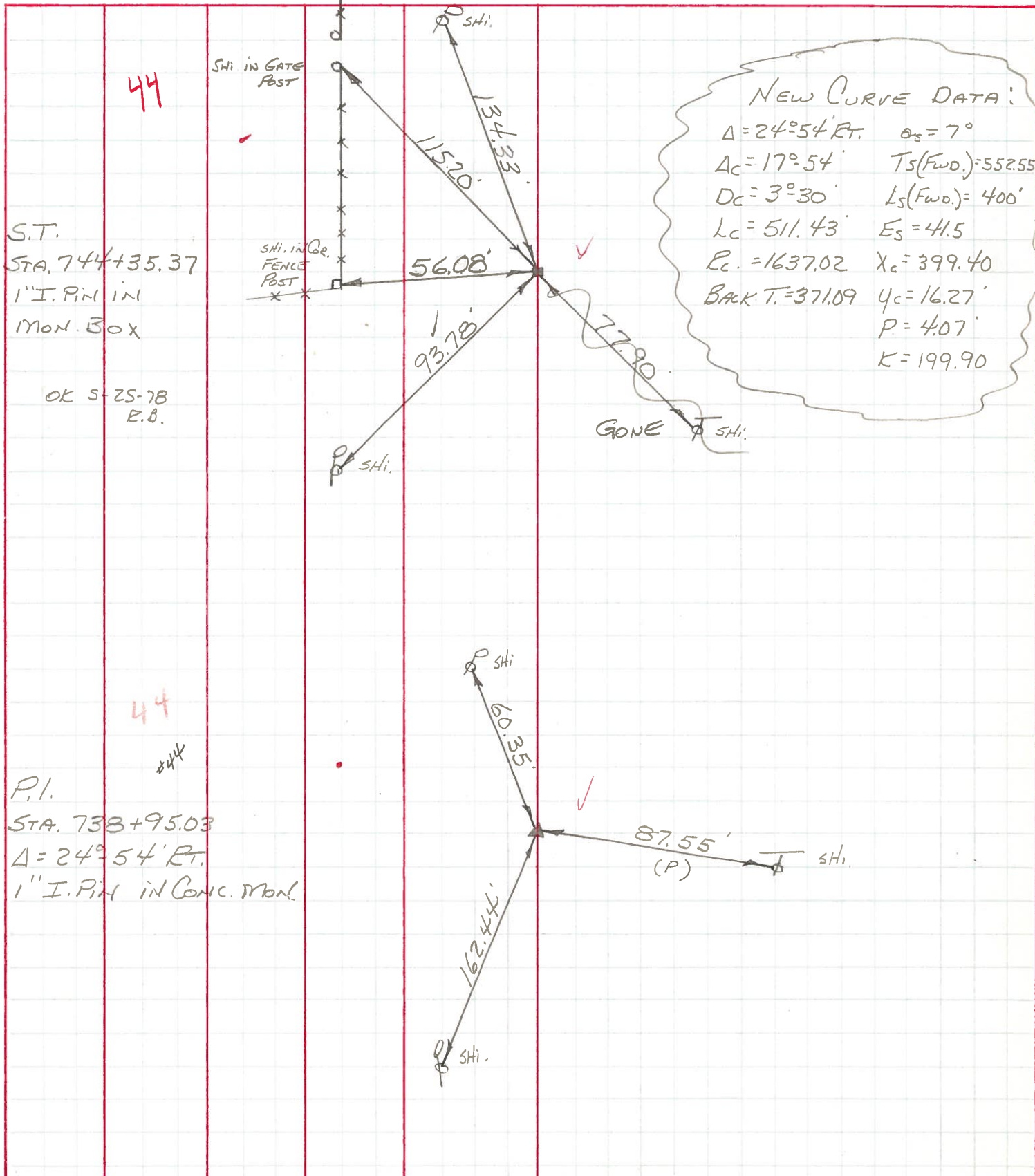
$\Delta = 24^\circ - 54' \text{ RT.}$ $\theta_s = 7^\circ$
 $\Delta_c = 17^\circ - 54'$ $T_s (\text{FWD}) = 552.55'$
 $D_c = 3^\circ - 30'$ $L_s (\text{FWD}) = 400'$
 $L_c = 511.43'$ $E_s = 41.5'$
 $R_c = 1637.02'$ $X_c = 399.40'$
 $\text{BACK T.} = 371.09'$ $Y_c = 16.27'$
 $P = 4.07'$
 $K = 199.90'$

P.I. - 738+95.03
 $\Delta = 24^\circ - 54' \text{ RT.}$
 1" IRON PIN IN CONC.



PERSONNEL	TITLE	PERSONNEL	TITLE	COUNTY	DATE	WEATHER	TEMP.
BURNSIDE				WOOD	10-4-71	CLEAR	+ 73°
SMITH				S. R. 199			
BOWERS				SEC. CURVE @ E.N. of HOLCOMBE RD.			
HOLCOMBE							

DESCRIPTION _____ LEFT _____ CENTER LINE _____ RIGHT _____ JOB NO. _____



PERSONNEL	TITLE	PERSONNEL	TITLE	COUNTY	DATE	WEATHER	TEMP.
Morrison		Sworder		Wood	April, 5, 1962	Cloudy	+ 45°
Bowers		Holcombe		S. R. US #23			
Jameson				SEC Mermill Rd North			
Kim							

DESCRIPTION Ties to Control points of Curve Relocation JOB NO. _____

