

O.D.O.T. DISTRICT 2 SURVEY OFFICE (USE ONLY)

PERSONNEL

REFERENCE NO. 46

SHEET 43 OF 45

NOTES LEU

DATE 5/18/18

ROUTE SR 199

H.C. LEU

WEATHER BREEZY

COUNTY WOOD

R.C. TRENKA

TEMP. 60°

TOWNSHIP FREEDOM

O'DONNELL

SECTION 32

HAGEMeyer

T 5 N R 12 E

TYPE MONUMENT 1" IPIN

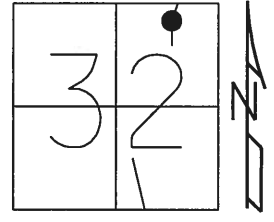
~~ON SURFACE~~ - BELOW 4"

LEFT - Q PAV'T - ~~RIGHT~~ 14.9'

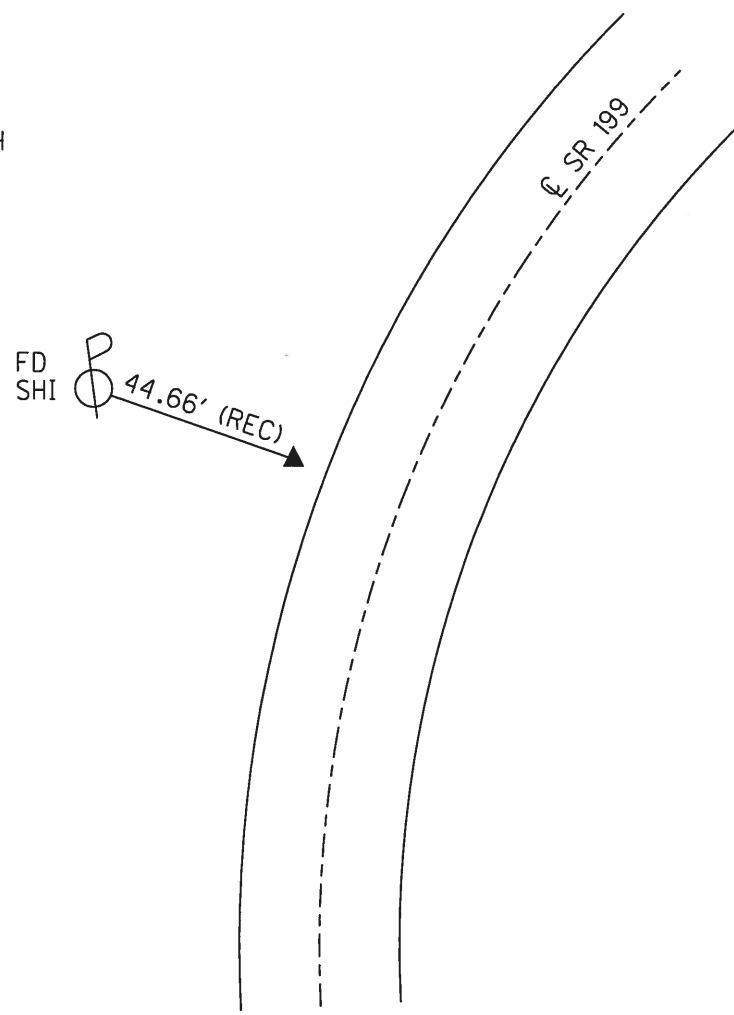
0.6' TO LT EDGE PAVEMENT

S.L.M. 770+75

Grid: Northing: 615578.575 Easting: 1694193.657



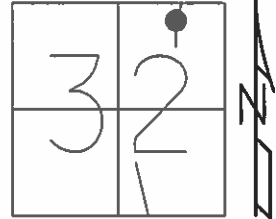
RECORD:  
FD IPIN  
7-15-87, MDB  
FD 3/4" IPIN  
BENT TO SW  
8/25/09, SAH  
4" DOWN  
5/18/18, JLL



O.D.O.T. DISTRICT 2 SURVEY OFFICE (USE ONLY)

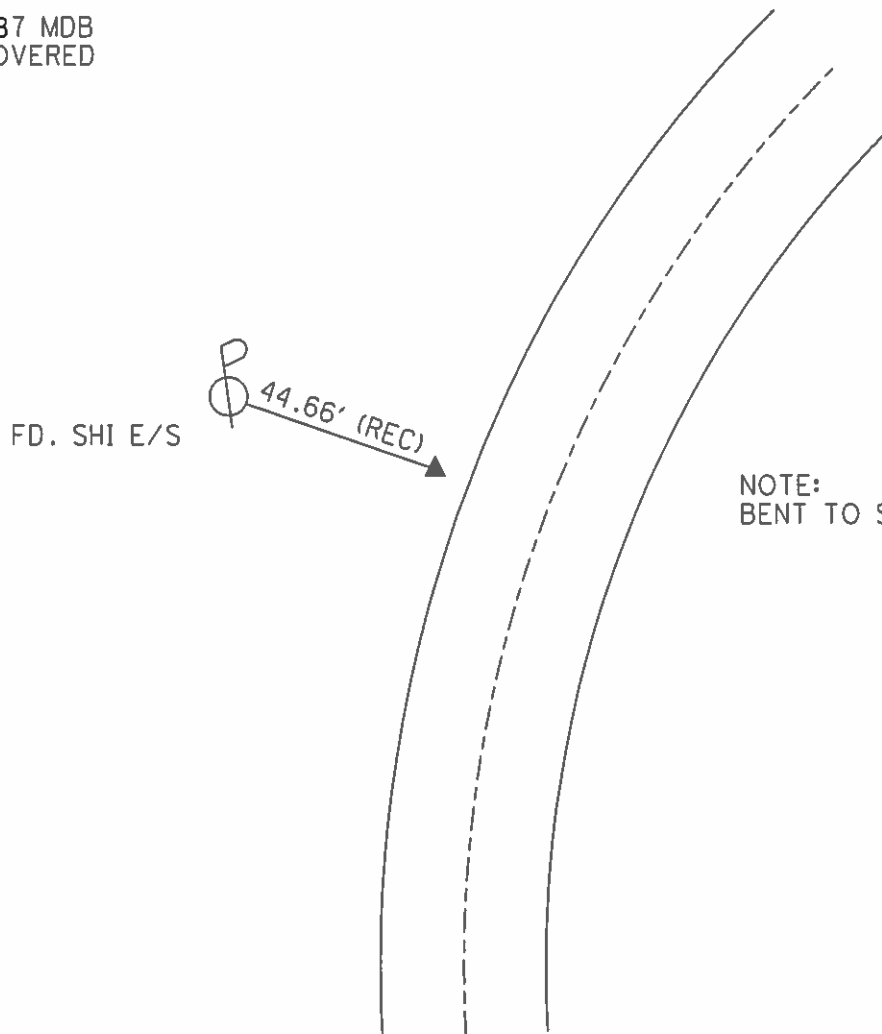
PERSONNEL \_\_\_\_\_ REFERENCE NO. 46 SHEET 43 OF 45  
NOTES HUSS DATE 08-25-09 ROUTE SR 199  
H.C. CANTERBURY WEATHER SUNNY COUNTY WOOD  
R.C. HUSS TEMP. 85° F TOWNSHIP FREEDOM  
SECTION 32  
T 5 N R 12 E

TYPE MONUMENT 3/4" IRON PIN  
ON SURFACE - ~~BELOW~~ ON \_\_\_\_\_  
LEFT - Q PAV'T - ~~RIGHT~~ 14.9'  
0.6' TO LT. EDGE PAVEMENT  
S.L.M. 770+75  
Grid: Northing: XXX Easting: XXX



RECORD

07-15-87 MDB  
NOT COVERED



NOTE:  
BENT TO SW DID NOT SHOOT

O.D.O.T. DISTRICT 2 SURVEY OFFICE (USE ONLY)

PERSONNEL

REFERENCE NO. 46

SHEET 7 OF 7

NOTES BARNHISEL

DATE 7/14/87

ROUTE 199

H.C. LOEHRKE

WEATHER SUNNY

COUNTY WOOD

R.C. HOFFMAN

TEMP. 75°

TOWNSHIP FREEDOM

SECTION 32

T 5 N R 12 E

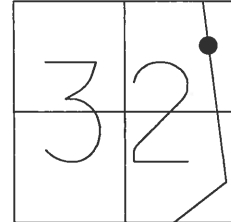
TYPE MONUMENT 3/4" IPIN

ON SURFACE - ~~BELOW~~ ON

LEFT - Q PAV'T - ~~RIGHT~~ 14.9'

2.8' LT TO LT EDGE PAVEMENT

S.L.M. 770+72



FD SHI  
E/S

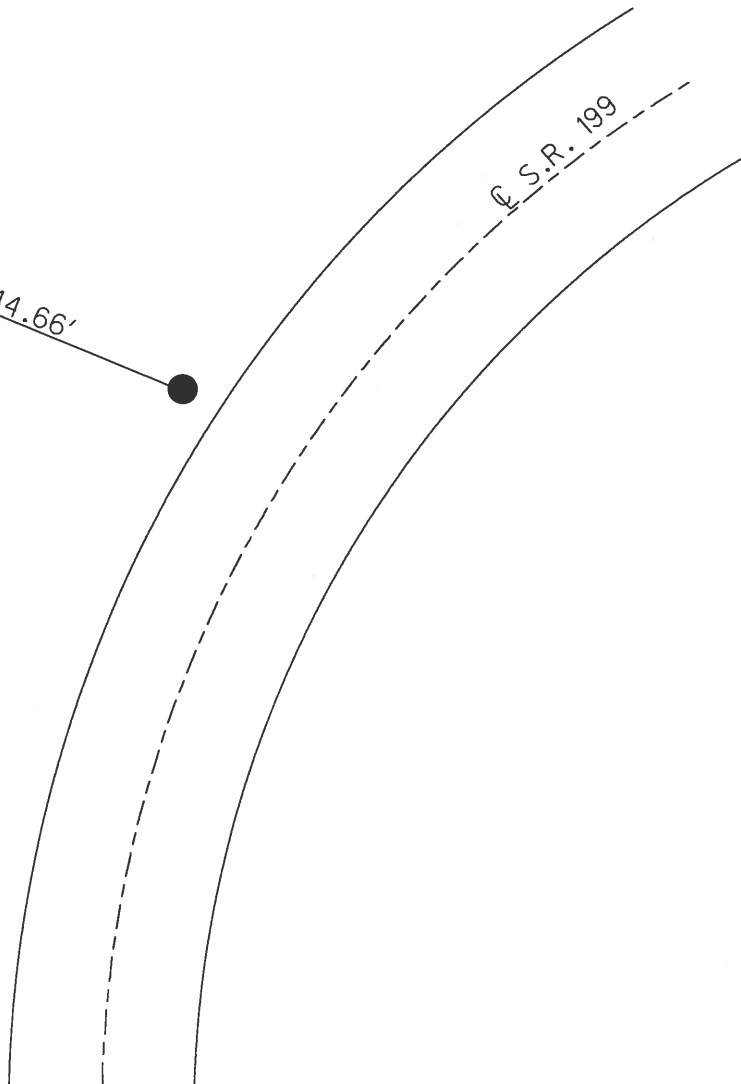


44.66'



F.S.R. 199

NOT COVERED  
7-27-87  
MDB



O.D.O.T. DISTRICT 2 SURVEY OFFICE

PERSONNEL

REFERENCE NO. 46

SHEET      OF     

NOTES BARNHISEL

H.C. Loehrlee

DATE 7-14-87

ROUTE 199

R.C. HOFFMAN

WEATHER SUNNY

COUNTY WOOD

TEMP. +75°

TOWNSHIP Freedom

SECTION 32

T 5 N R 12 E

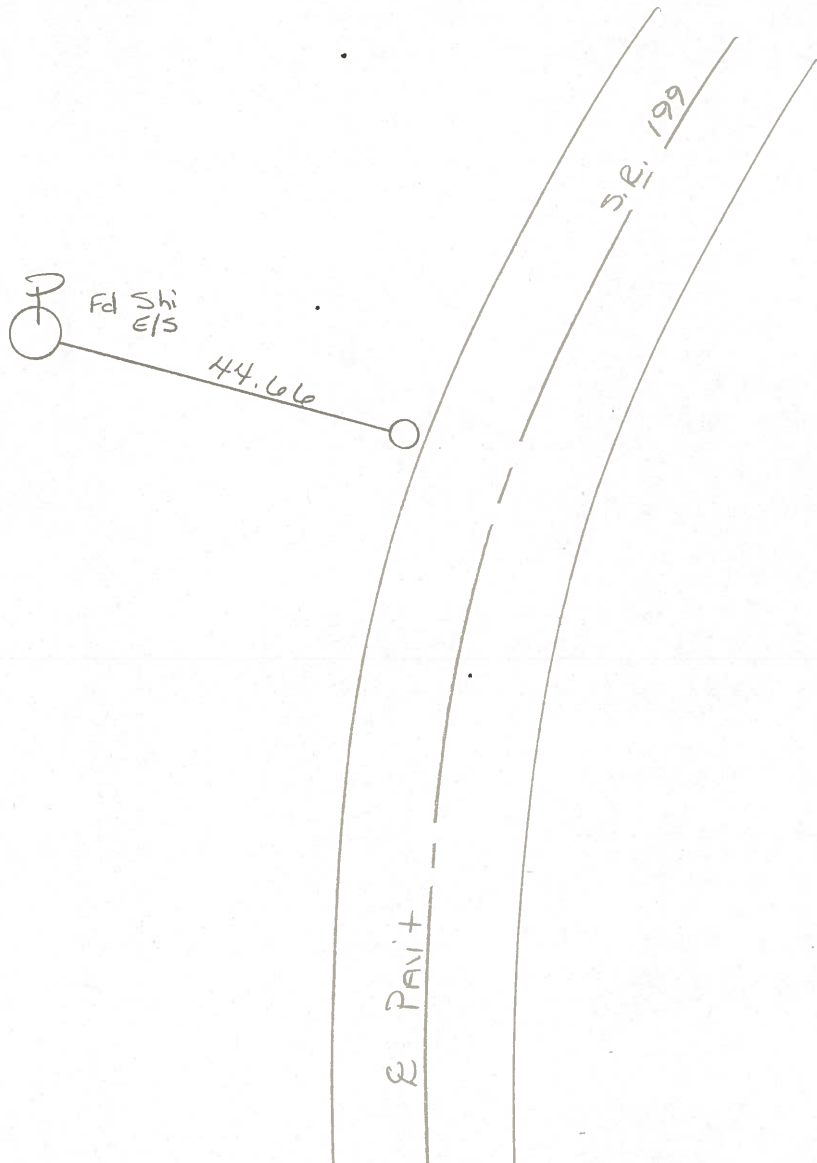
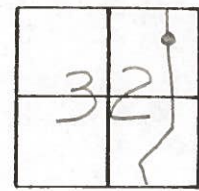
TYPE MONUMENT 3/4" Iron Pin

ON SURFACE - BELOW yes

LEFT - 0 PAV'T. - RIGHT 14.9

2.8 <sup>Lt</sup> TO Lt EDGE PAVEMENT

S.L.M. 770 + 72



Not Covered  
7-27-87  
MOB

County WOOD S.R. 199

Township FREEDOM

Section 32

T N, R E

Personnel BURNSIDE

SMITH

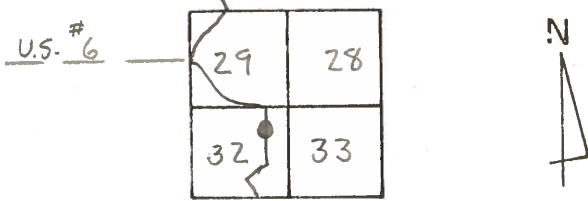
BOWERS

HOLCOMBE

Date 9-1-71 (CHKD. 5-25-78)

Weather CLOUDY

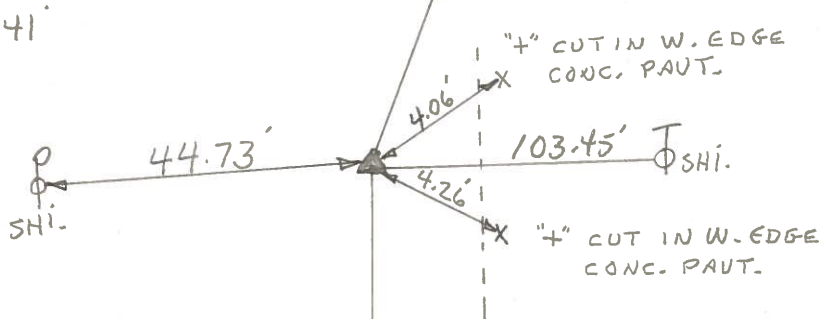
Temp. 77°



#46

U.S. RT. 6

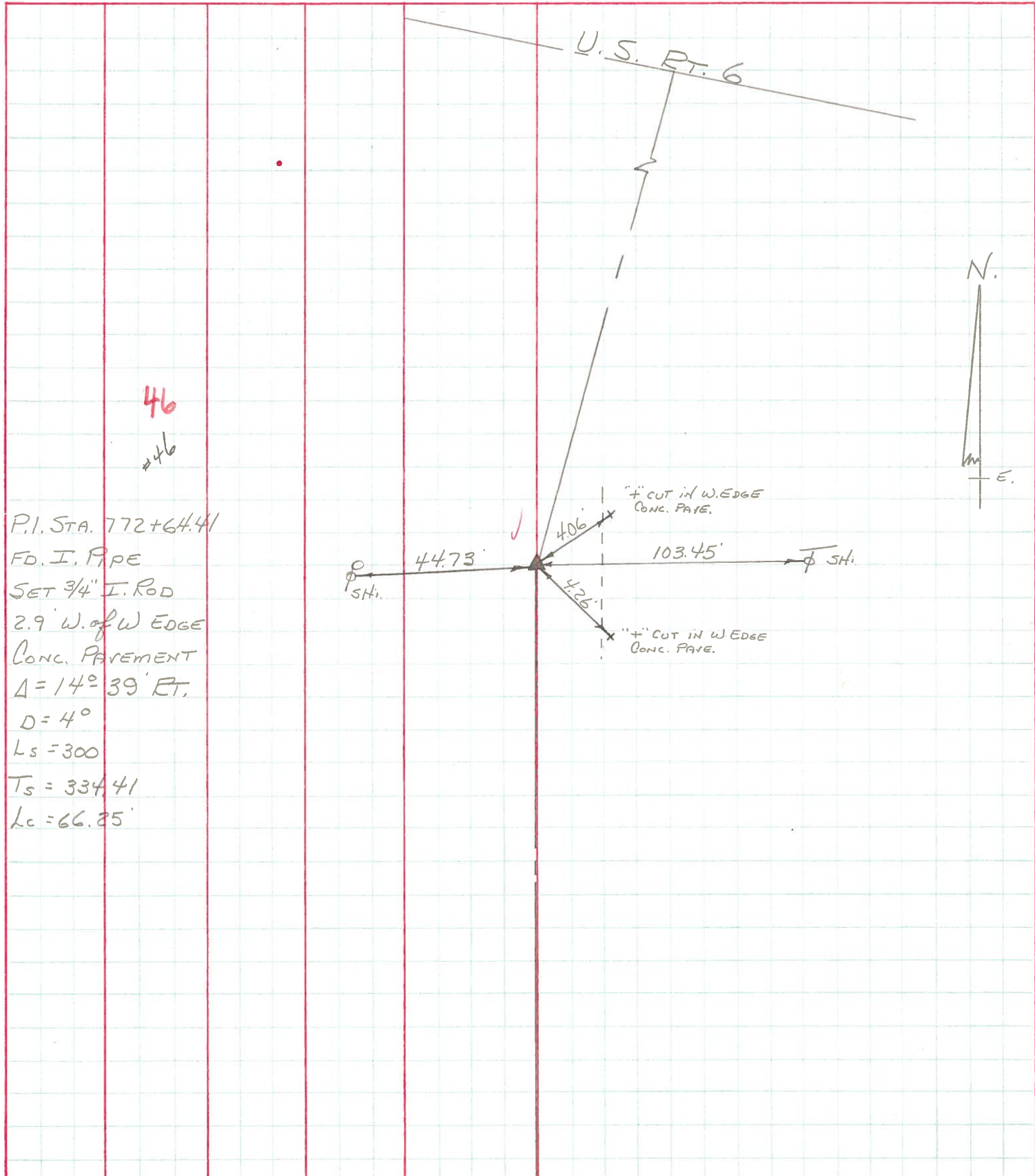
P.I STA. 772+64.41  
 FD. IRON PIPE  
 SET 3/4" IRON ROD  
 2.9' W. OF W-EDGE  
 CONC. PAUT.  
 $\Delta = 14^{\circ}-39'$  RT.  
 $D = 4^{\circ}$   
 $LS = 300'$   
 $T_s = 334.41'$   
 $L_c = 66.25'$



PERSONNEL	TITLE	PERSONNEL	TITLE
BURNSIDE			
SMITH			
BOWERS			
HOLCOMBE			

COUNTY Wood DATE 9-1-71  
 S. R. 199 (old U.S. 23) WEATHER Cloudy  
 SEC. \_\_\_\_\_ TEMP. +77°

DESCRIPTION \_\_\_\_\_ LEFT \_\_\_\_\_ CENTER LINE \_\_\_\_\_ RIGHT \_\_\_\_\_ JOB NO. \_\_\_\_\_



46  
#46

P.I. STA. 772+64.41  
 FD. I. PIPE  
 SET 3/4" I. ROD  
 2.9' W. of W EDGE  
 CONC. PAVEMENT  
 $\Delta = 14^\circ 39' \text{ RT.}$   
 $D = 4^\circ$   
 $L_s = 300$   
 $T_s = 334.41$   
 $L_c = 66.25'$

