



O.D.O.T. DISTRICT 2 SURVEY OFFICE (USE ONLY)

PERSONNEL \_\_\_\_\_ REFERENCE NO. 52 B SHEET 8 OF 72  
 NOTES \_\_\_\_\_ HUSS DATE 6/23/11 ROUTE SR 199  
 H.C. \_\_\_\_\_ HUSS WEATHER CLOUDY/RAIN COUNTY WOOD  
 R.C. \_\_\_\_\_ CANTERBURY TEMP. 70° TOWNSHIP FREEDOM  
 \_\_\_\_\_ SECTION 18  
 \_\_\_\_\_ T 5 N R 12 E

TYPE MONUMENT \_\_\_\_\_ SM RR SPIKE \_\_\_\_\_

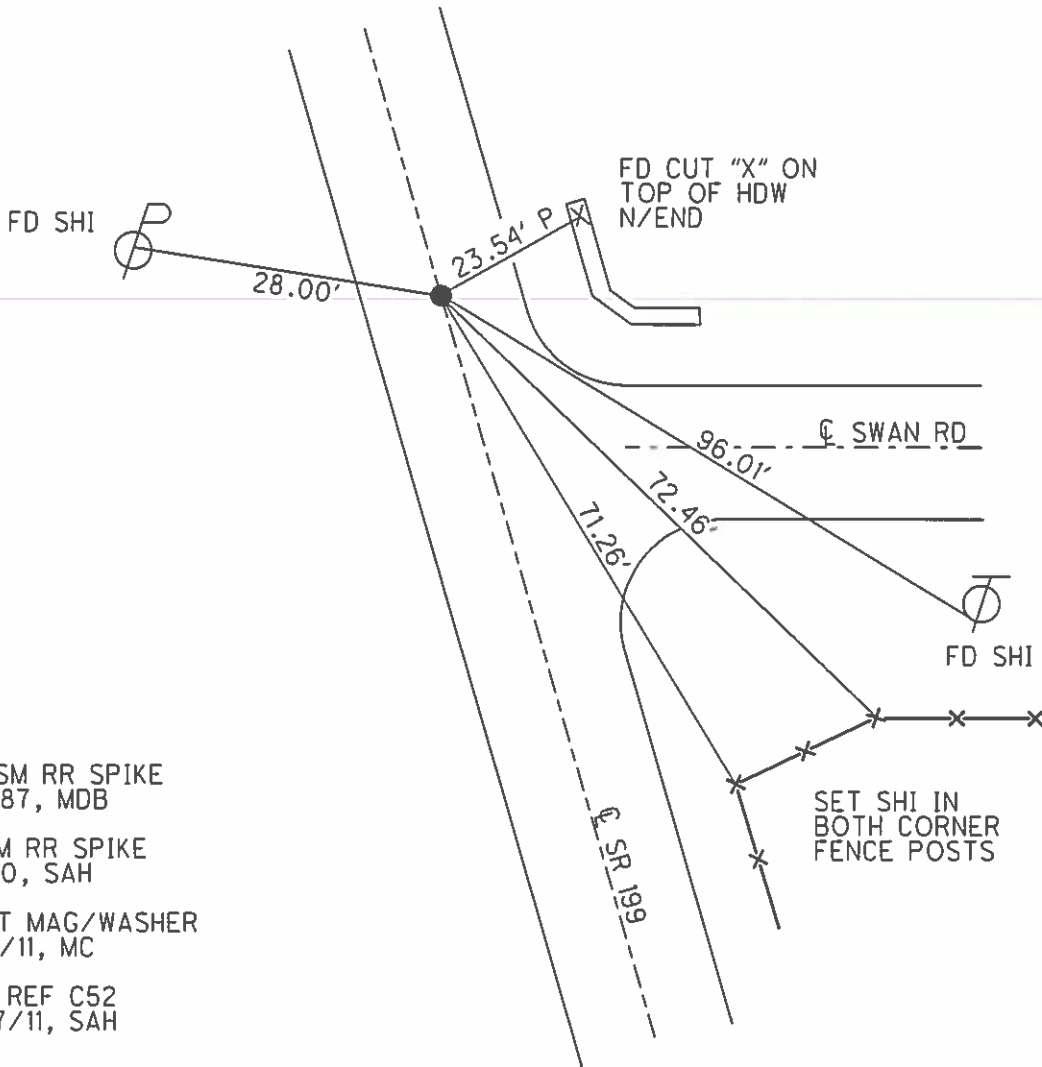
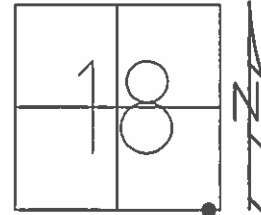
ON SURFACE - ~~BELOW~~ \_\_\_\_\_ ON \_\_\_\_\_

LEFT - ~~C PAVT~~ - ~~RIGHT~~ 1.4', 21.2' N OF C E

8.6' TO LT EDGE PAVEMENT

S.L.M. \_\_\_\_\_ 916+30.04

GRID: NORTHING: 624650.925 EASTING: 1690593.521



SET SM RR SPIKE  
9/4/87, MDB

FD SM RR SPIKE  
2/1/10, SAH

RESET MAG/WASHER  
11/23/11, MC

GPS, REF C52  
12/07/11, SAH

# O.D.O.T. DISTRICT 2 SURVEY OFFICE

PERSONNEL \_\_\_\_\_

REFERENCE NO. \_\_\_\_\_

SHEET \_\_\_\_\_ OF \_\_\_\_\_

NOTES BARNHISEL

H.C. Sackman

R.C. HOFFMAN

DATE 7-13-87

WEATHER cloudy

TEMP. +85°

ROUTE 199

COUNTY WOOD

TOWNSHIP Webster

SECTION 17

T. 5 N. R. 12 E.

TYPE MONUMENT P.K. NAIL (BY OTHERS)

ON SURFACE - BELOW yes

LEFT- & PAV'T. - RIGHT 1.0

8.3 TO L EDGE PAVEMENT

S.L.M. 906 +80

21.2 NOF E SWAN Rd

52B

