

O.D.O.T. DISTRICT 2 SURVEY OFFICE (USE ONLY)

PERSONNEL

REFERENCE NO. 53 A

SHEET 11 OF 78

NOTES NIESE

DATE 8/26/21

ROUTE SR 199

H.C. AUBLE

WEATHER SUNNY

COUNTY WOOD

R.C. NIESE

TEMP. 79°

TOWNSHIP WEBSTER

DWG BY NIESE PID 107613

SECTION 18

T 5 N R 12 E

TYPE MONUMENT MAG/WASHER

ON SURFACE - ~~BELOW~~ ON

OFFSET 0.4' LT : ~~RT~~

9.0' TO LT EDGE PAVEMENT

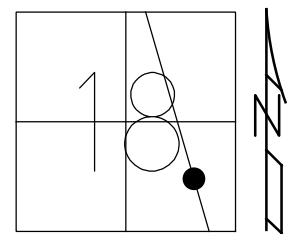
STATION: 929+29.50

HORZ.DATUM: NAD83(2011)

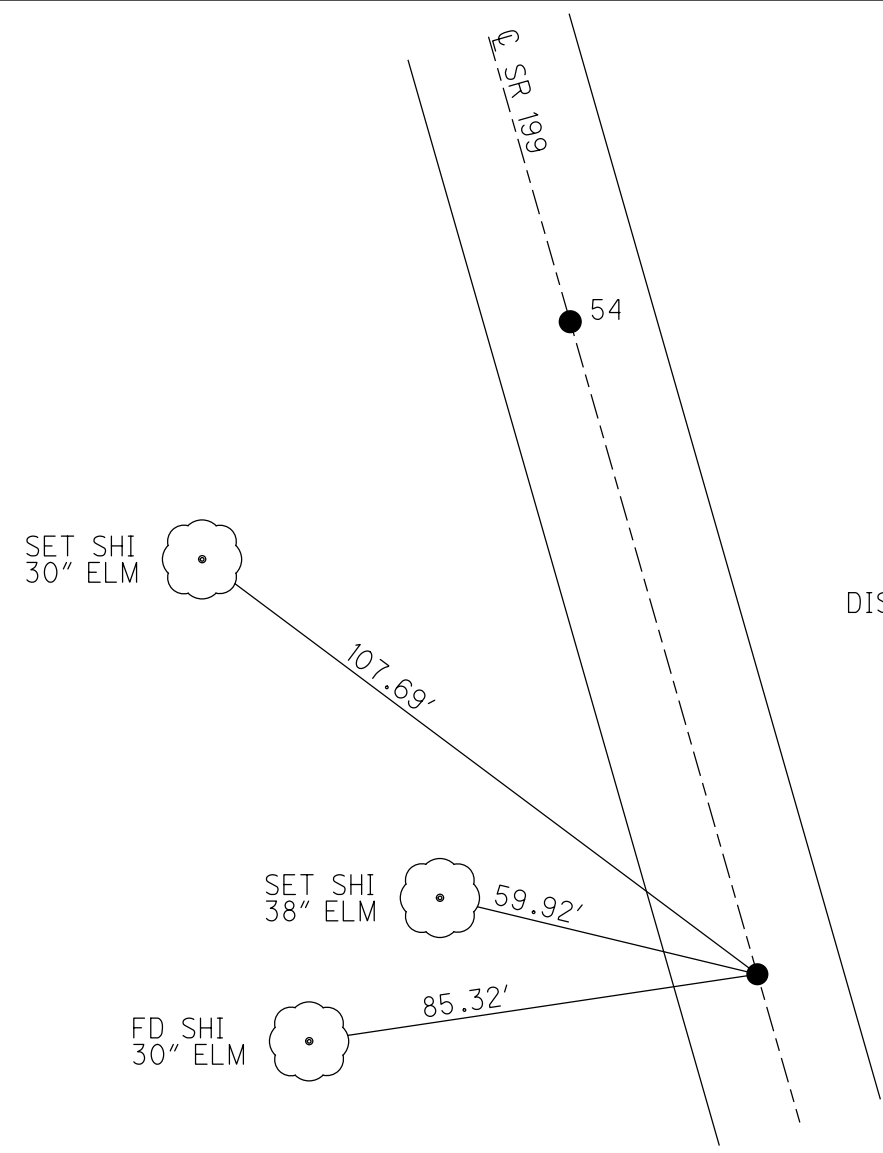
GEOID: NAVD88 2012A

GRID: NORTHING: 628567.939

EASTING: 1689592.816



RECORD:
 POINT SET BY OTHERS
 SET SM.R.R.SPIKE
 9/4/87, MDB
 FD SM.R.R.SPIKE
 2/1/10
 6/23/11, SAH
 SET MAG/WASHER
 9/1/11, SAH
 FD MAG/WASHER
 12/7/11, SAH
 REFA53
 8/7/19, JLL
 8/26/21, DSA
 11/23/21, DSA

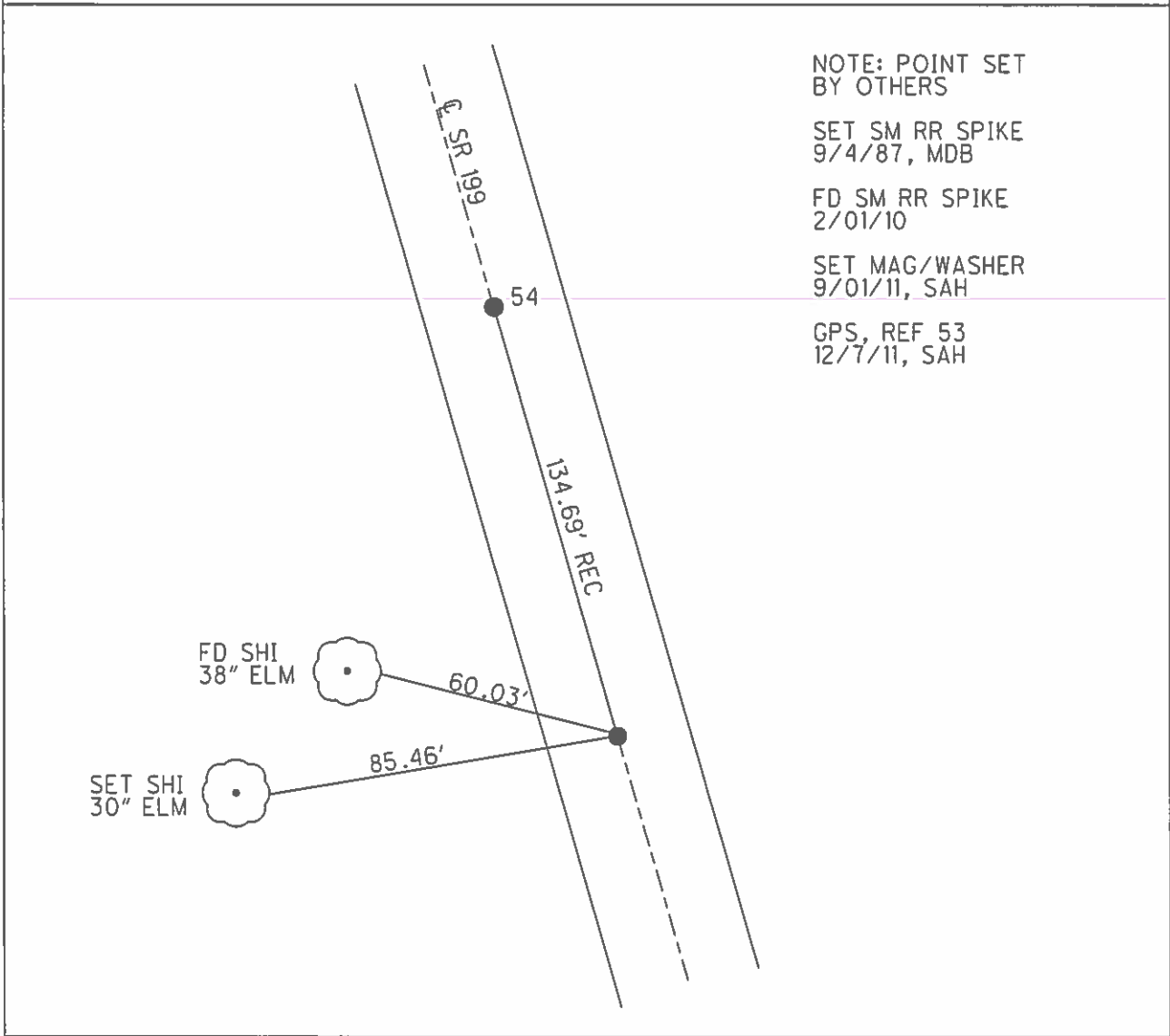
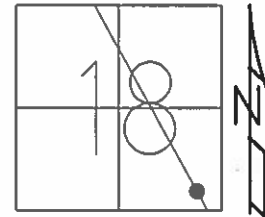


DIST. 53A-54=134.69' REC

O.D.O.T. DISTRICT 2 SURVEY OFFICE (USE ONLY)

PERSONNEL _____ REFERENCE NO. 53 A SHEET 10 OF 72
 NOTES HUSS DATE 6/23/11 ROUTE SR 199
 H.C. HUSS WEATHER CLOUDY/RAIN COUNTY WOOD
 R.C. CANTERBURY TEMP. 70° TOWNSHIP WEBSTER
 _____ SECTION 18
 _____ T 5 N R 12 E

TYPE MONUMENT SM RR SPIKE
~~ON SURFACE~~ - BELOW ON
 LEFT - ~~C PAV'T~~ - RIGHT 0.4'
9.0' TO LT EDGE PAVEMENT
 S.L.M. 929+29.50
 GRID: NORTHING: _____ EASTING: _____



NOTE: POINT SET BY OTHERS

SET SM RR SPIKE 9/4/87, MDB

FD SM RR SPIKE 2/01/10

SET MAG/WASHER 9/01/11, SAH

GPS, REF 53 12/7/11, SAH

O.D.O.T. DISTRICT 2 SURVEY OFFICE

PERSONNEL _____

REFERENCE NO. _____

SHEET _____ OF _____

NOTES BARNHISEL

H.C. SOCKMAN

R.C. HOFFMAN

DATE 7-13-87

WEATHER Partly cloudy

TEMP. +85°

ROUTE 199

COUNTY WOOD

TOWNSHIP Webster

SECTION 18

T. 5 N. R. 12 E

TYPE MONUMENT P.K. NAILS

ON SURFACE - BELOW yes

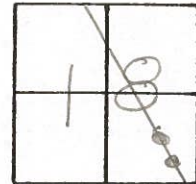
LEFT - \ominus PAV'T. - RIGHT .4

PT A 9.0

PT B 9.2

TO LT EDGE PAVEMENT

S.L.M. 919 + 80 921 + 15



Note: Points Set by others

Set Sm RR Spk's
9-4-87
in DB

