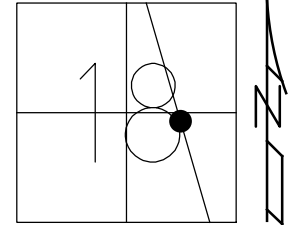


O.D.O.T. DISTRICT 2 SURVEY OFFICE (USE ONLY)

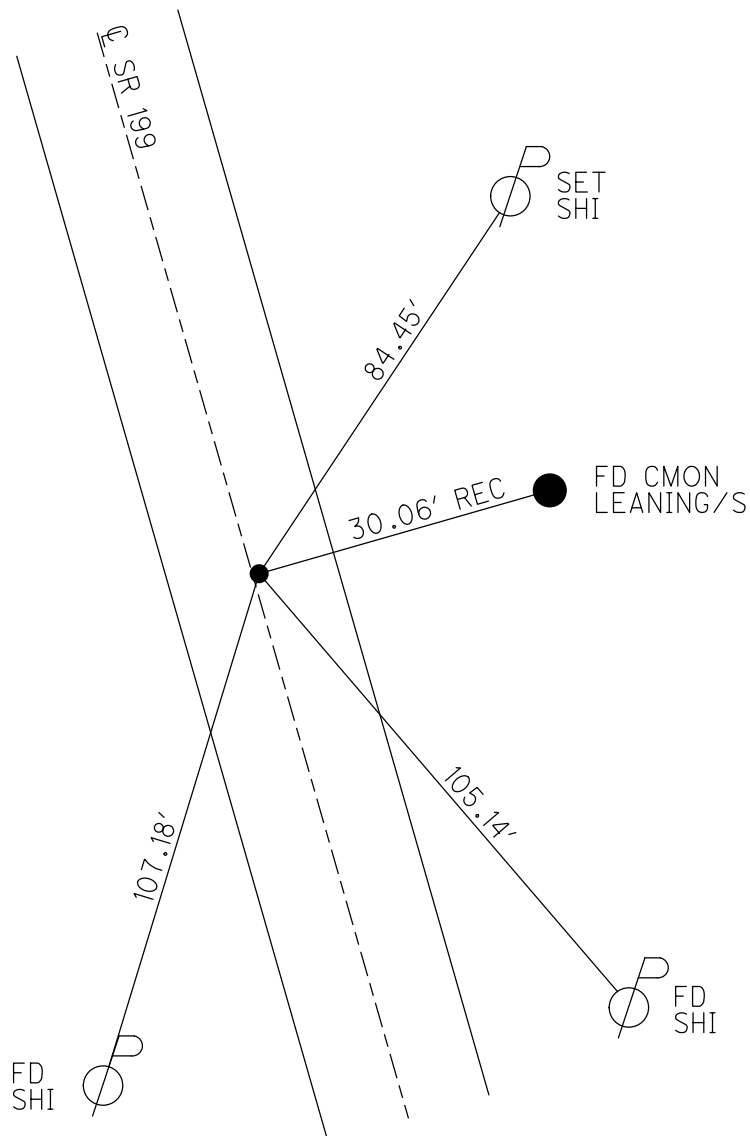
PERSONNEL	REFERENCE NO. <u>55</u>	SHEET <u>14</u> OF <u>78</u>
NOTES <u>NIESE</u>	DATE <u>8/26/21</u>	ROUTE <u>SR 199</u>
H.C. <u>AUBLE</u>	WEATHER <u>SUNNY</u>	COUNTY <u>WOOD</u>
R.C. <u>NIESE</u>	TEMP. <u>79°</u>	TOWNSHIP <u>WEBSTER</u>
		SECTION <u>18</u>
DWG BY <u>NIESE</u>	PID <u>107613</u>	T <u>5</u> N R <u>12</u> E

TYPE MONUMENT MAG/WASHER  
 ON SURFACE - ~~BELOW~~ ON  
 OFFSET 0.3' LT : RT  
9.8' TO RT EDGE PAVEMENT  
 STATION: 940+51.49



HORZ.DATUM: NAD83(2011) GEOID: NAVD88 2012A  
 GRID: NORTHING: 629653.631 EASTING: 1689309.924

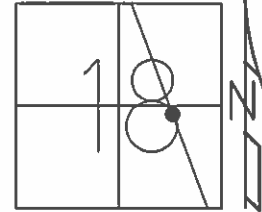
RECORD:  
 SET SM.R.R.SPIKE  
 8/17/87, MDB  
 FD SM.R.R.SPIKE  
 2/1/10  
 6/23/11, SAH  
 SET MAG/WASHER  
 11/21/11, MC  
 FD MAG/WASHER  
 12/7/11, SAH  
 REF55  
 8/7/19, JLL  
 8/26/21, DSA  
 11/23/21, DSA



**O.D.O.T. DISTRICT 2 SURVEY OFFICE (USE ONLY)**

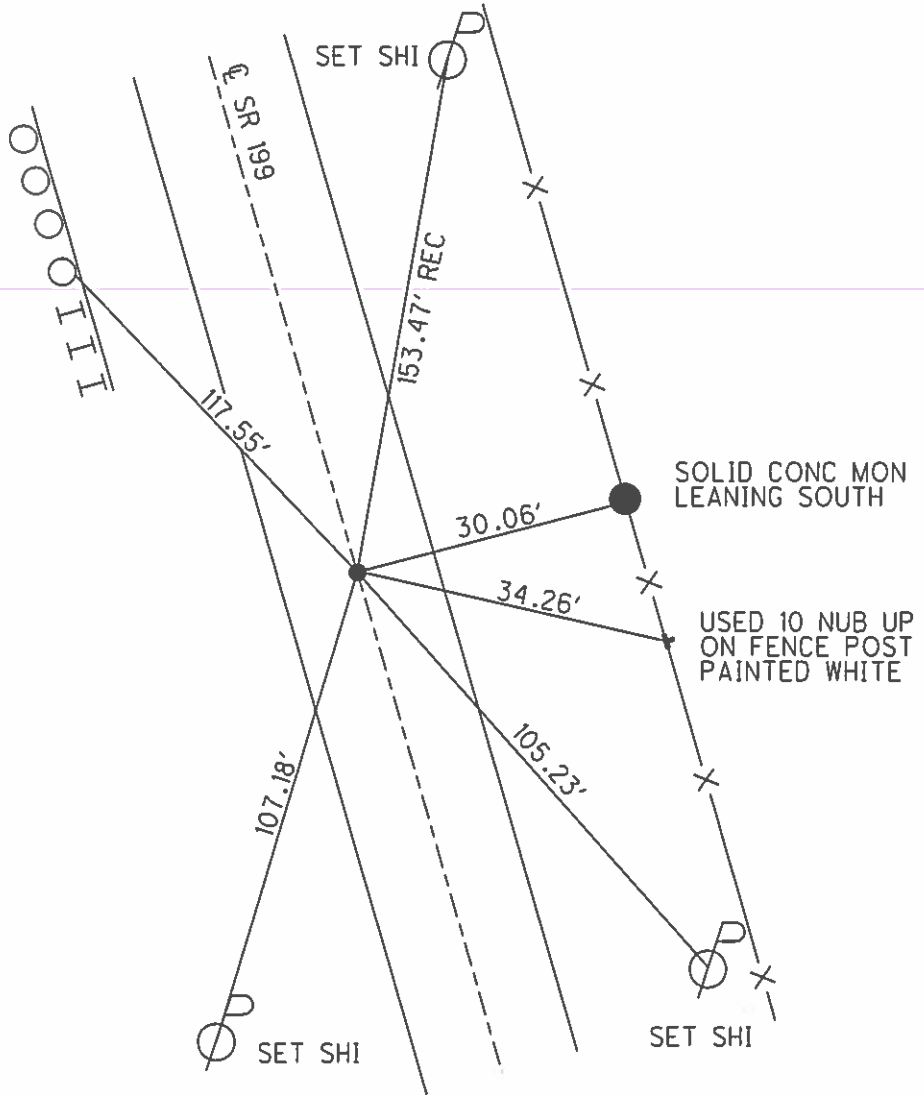
PERSONNEL	REFERENCE NO.	55	SHEET	12	OF	72
NOTES	HUSS	DATE	6/23/11	ROUTE	SR 199	
H.C.	HUSS	WEATHER	CLOUDY/RAIN	COUNTY	WOOD	
R.C.	CANTERBURY	TEMP.	70°	TOWNSHIP	WEBSTER	
				SECTION	18	
				T	5	N R 12 E

TYPE MONUMENT \_\_\_\_\_ SM RR SPIKE \_\_\_\_\_  
 ON SURFACE - ~~BELOW~~ \_\_\_\_\_ ON \_\_\_\_\_  
~~LEFT - C PAV'T~~ - RIGHT \_\_\_\_\_ 0.3' \_\_\_\_\_  
 \_\_\_\_\_ 9.8' TO RT EDGE PAVEMENT \_\_\_\_\_  
 S.L.M. \_\_\_\_\_ 940+51.49 \_\_\_\_\_



GRID: NORTHING: 629653.643 EASTING: 1689309.870

SET SHI IN TOP  
OF WOODEN GR  
POST



SET SM RR SPIKE  
8/17/87, MDB

FD SM RR SPIKE  
2/1/10

SET MAG/WASHER  
11/21/11, MC

GPS, REF 55  
12/7/11, SAH

# O.D.O.T. DISTRICT 2 SURVEY OFFICE

PERSONNEL \_\_\_\_\_

REFERENCE NO. 55

SHEET \_\_\_\_\_ OF \_\_\_\_\_

NOTES BARNHISEL

H.C. SOCKMAL

R.C. HOFFMAN

DATE 7-13-87

WEATHER CLOUDY

TEMP. +85°

ROUTE 199

COUNTY WOOD

TOWNSHIP Webster

SECTION 18

T 5 N R 12 E

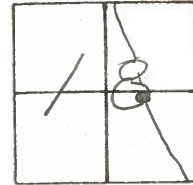
TYPE MONUMENT P.K. NAIL

ON SURFACE - BELOW 1"

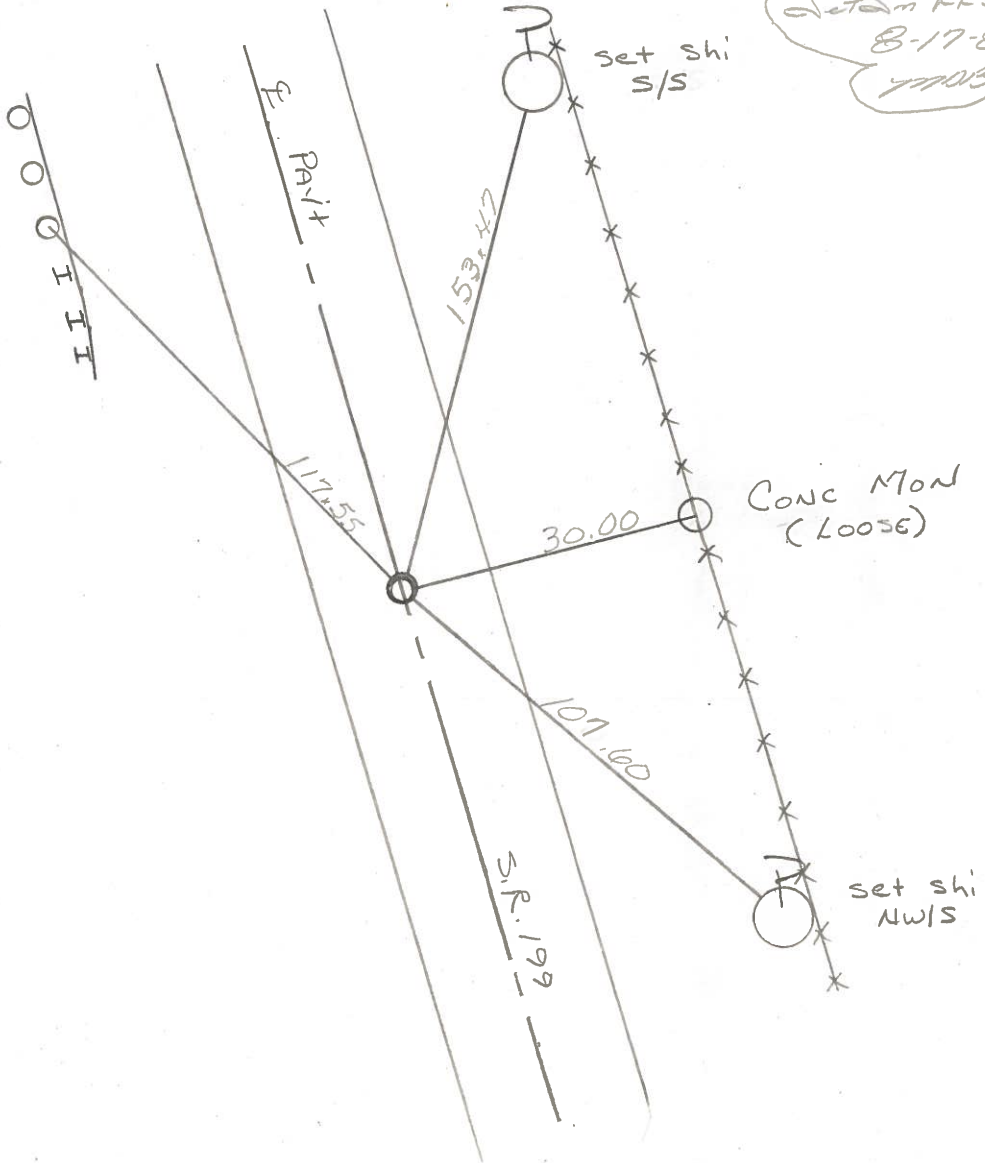
LEFT - C PAV'T. - RIGHT YES

10.0 TO RT EDGE PAVEMENT

S.L.M. 931 +02



Set shi IN TOP OF WOODEN G.R. Post



Set shi RR Spt  
8-17-87  
77003

County WOOD S.R. 199

Township WEBSTER

Section 18

T N, R E

Personnel TOMSIK

NEUSER

VANYO

GRANAT

Date 11-5-71

Weather \_\_\_\_\_

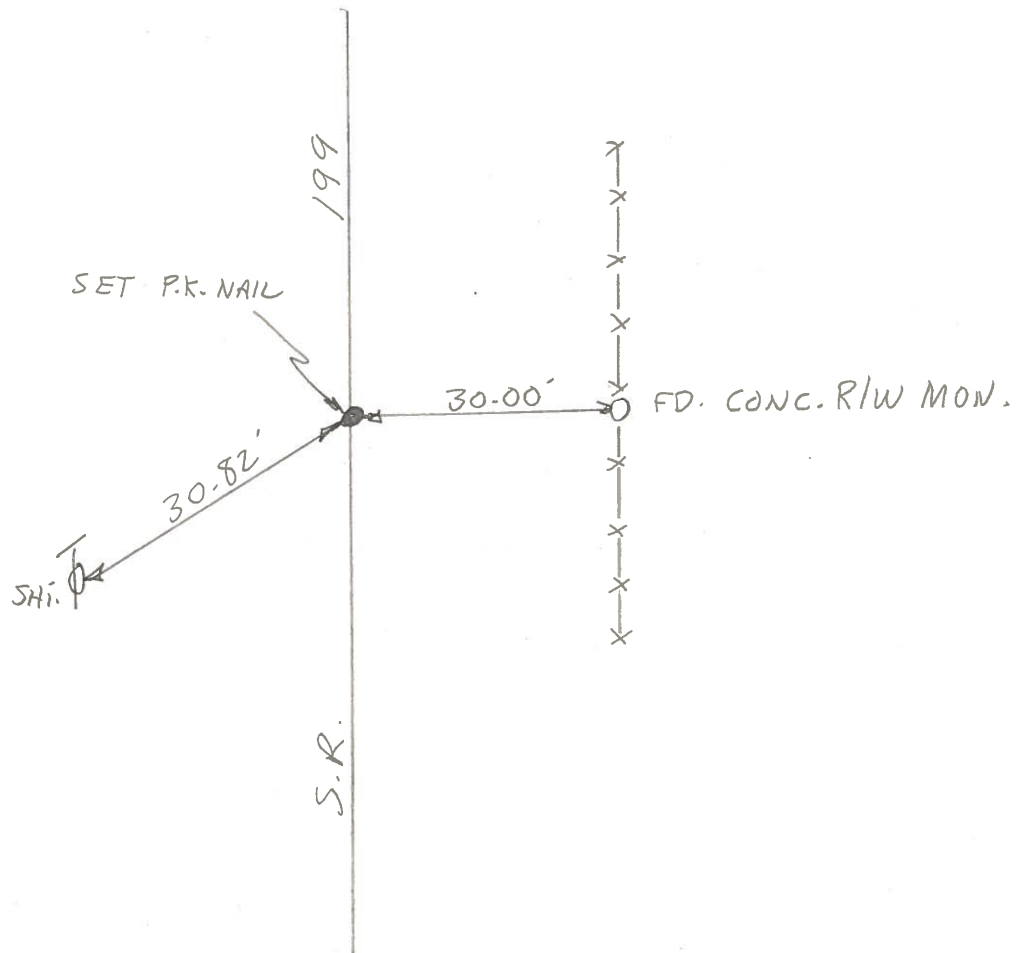
Temp. \_\_\_\_\_

12	7
13	18



#55

2220'± N. OF SWAN RD.



COPIED

SHEET NO. \_\_\_\_\_

PERSONNEL	TITLE	PERSONNEL	TITLE
TOMSIK			
NEUSER			
VAIVDO			
GRANATA			

COUNTY WOOD DATE Nov. 5-1971

S. R. 199 WEATHER \_\_\_\_\_

SEC. \_\_\_\_\_ TEMP. \_\_\_\_\_

DESCRIPTION \_\_\_\_\_ LEFT \_\_\_\_\_ CENTER LINE \_\_\_\_\_ RIGHT \_\_\_\_\_ JOB NO. \_\_\_\_\_

