

O.D.O.T. DISTRICT 2 SURVEY OFFICE (USE ONLY)

PERSONNEL

REFERENCE NO. 55 C

SHEET 18 OF 78

NOTES HUSS

DATE 6/23/11

ROUTE SR 199

H.C. HUSS

WEATHER CLOUDY/RAIN

COUNTY WOOD

R.C. CANTERBURY

TEMP. 71°

TOWNSHIP WEBSTER

DWG BY NIESE PID 107613

SECTION 7

T 5 N R 12 E

TYPE MONUMENT SM.R.R.SPIKE

ON SURFACE - ~~BELOW~~ ON

OFFSET 0.5' LT : ~~RT~~

10.0' TO LT EDGE PAVEMENT

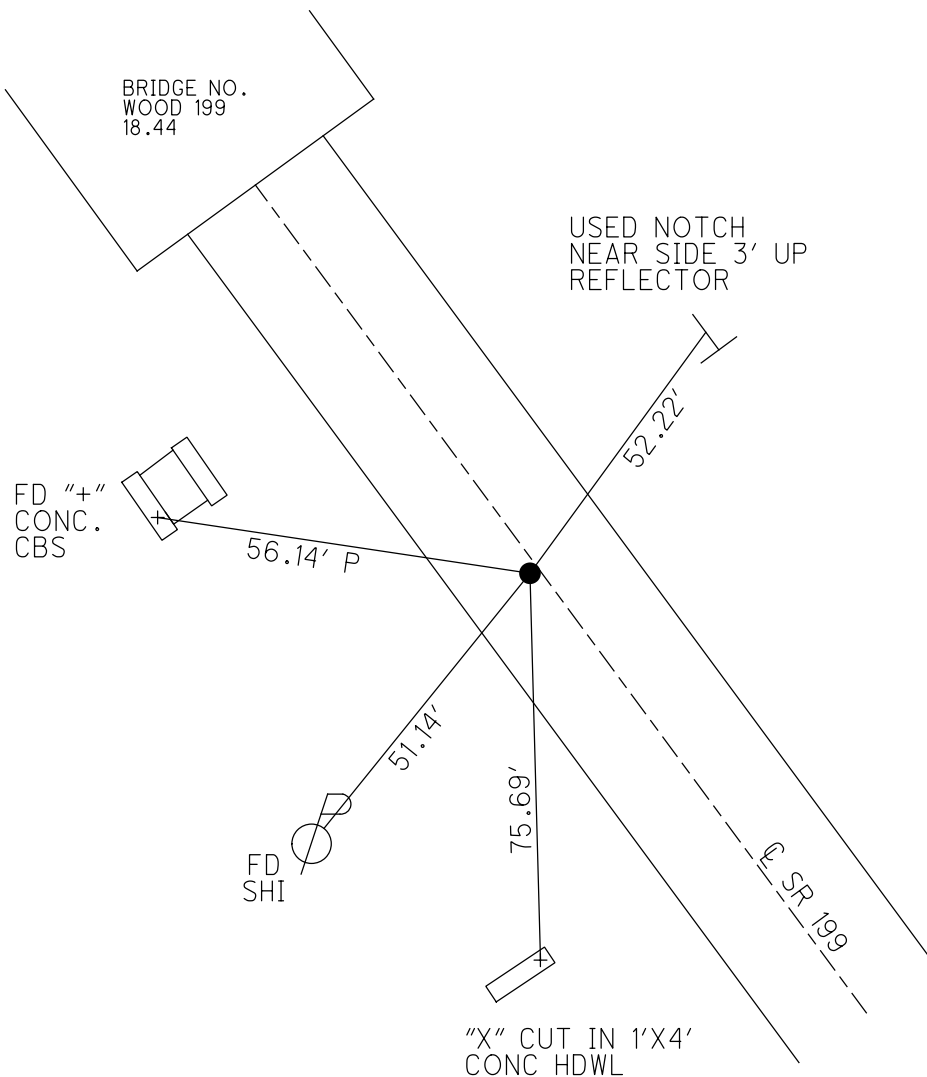
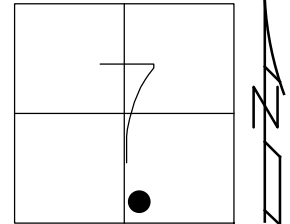
STATION: 976+57.90

HORZ.DATUM: NAD83(2011)

GEOID: NAVD88 2012A

GRID: NORTHING: 633149.844

EASTING: 1688424.669

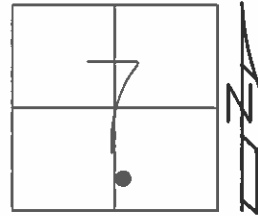


RECORD: P.C.
 POINT ORIGINALLY
 SET BY CONSULTANT
 FOR BRIDGE WORK
 ±498' TO SOUTH
 END OF BRIDGE
 RAILING ON C
 SET P.K./WASHER
 6/13/02, DCH
 FD SM.R.R.SPIKE
 2/1/10
 6/23/11, SAH
 SET MAG/WASHER
 11/23/11, MC
 FD MAG/WASHER
 12/7/11, SAH
 REFC55
 9/12/19, JLL

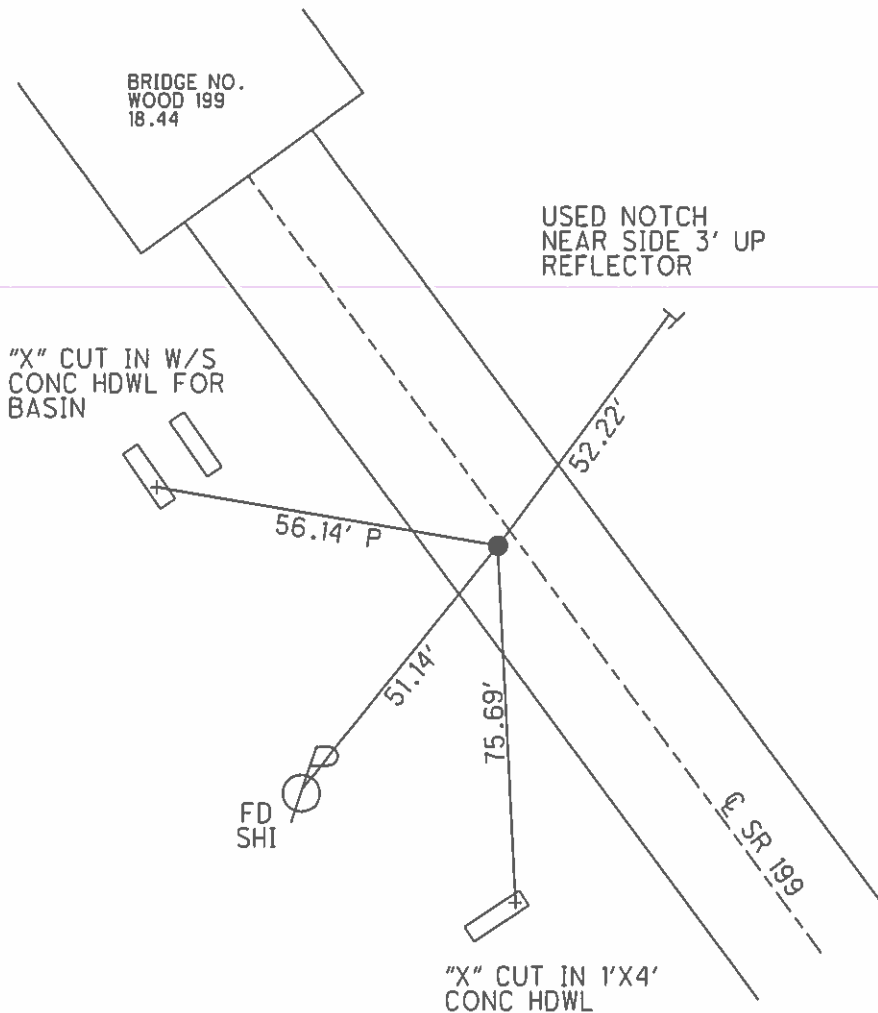
O.D.O.T. DISTRICT 2 SURVEY OFFICE (USE ONLY)

PERSONNEL _____ REFERENCE NO. 55 C SHEET 15 OF 72
 NOTES HUSS DATE 6/23/11 ROUTE SR 199
 H.C. HUSS WEATHER CLOUDY/RAIN COUNTY WOOD
 R.C. CANTERBURY TEMP. 71° TOWNSHIP WEBSTER
 _____ SECTION 7
 _____ T 5 N R 12 E

TYPE MONUMENT _____ SM RR SPIKE
 ON SURFACE - ~~BELOW~~ _____ ON
 LEFT - ~~C~~ PAV'T - ~~RIGHT~~ _____ 0.5'
 _____ 10' TO LT EDGE PAVEMENT
 S.L.M. _____ 976+57.90



GRID: NORTHING: 633149.785 EASTING: 1688424.531



POINT ORIGINALLY SET BY CONSULTANT FOR BRIDGE WORK

NOTE: PC SET PK/WASHER 6/13/02, DCH

NOTE: 498+/- TO SOUTH END OF BRIDGE RAILING ON C

FD SM RR SPIKE 2/1/10

SET MAG/WASHER 11/23/11, MC

GPS, REF C55 12/7/11, SAH

O.D.O.T. DISTRICT 2 SURVEY OFFICE

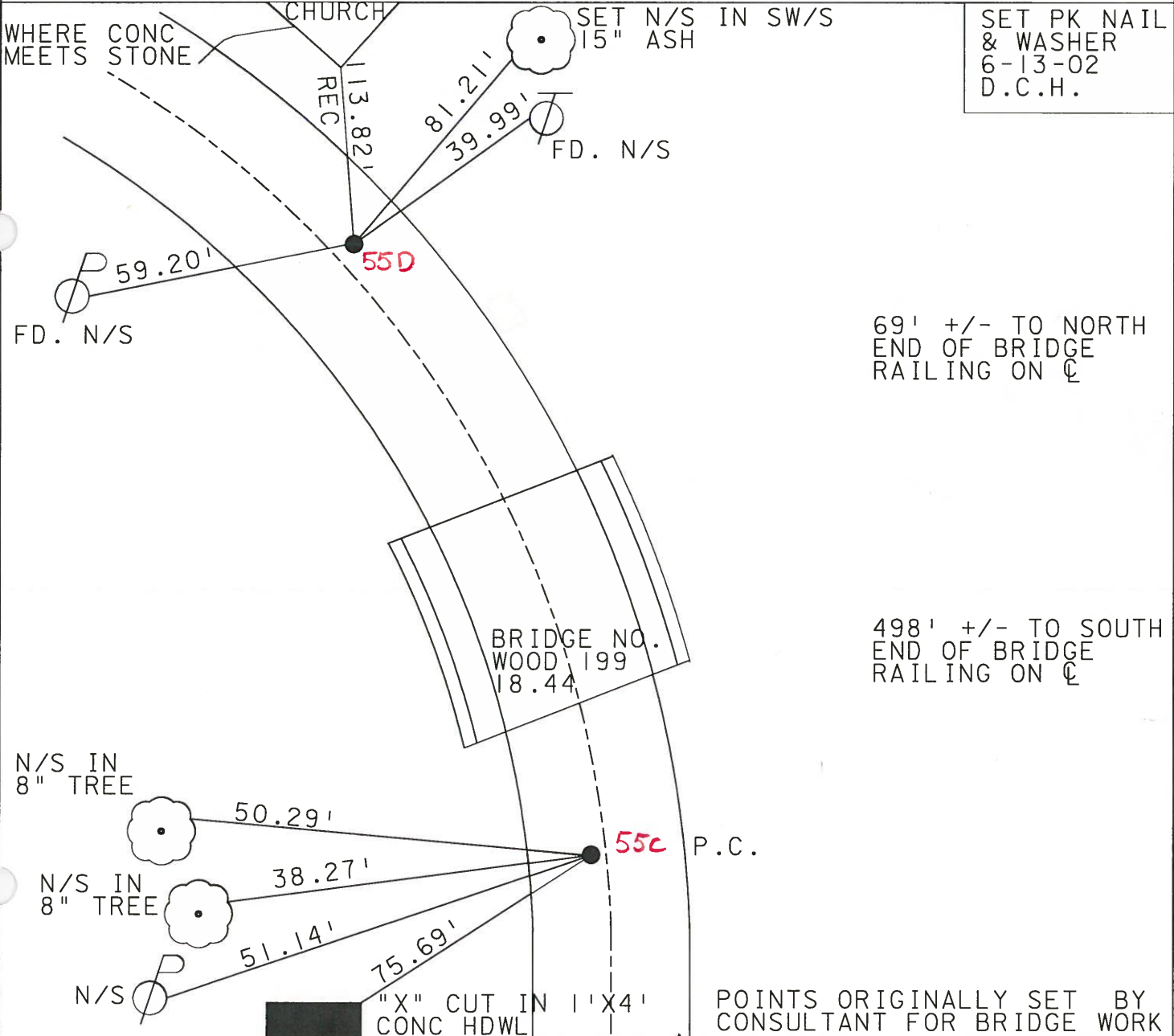
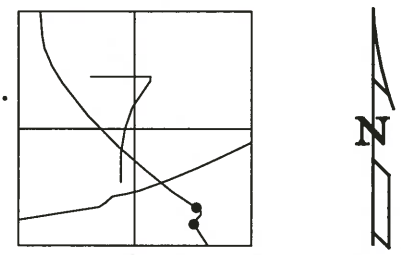
PERSONNEL

NOTES _____ ROUSOS
 H.C. _____ HOMAN
 R.C. _____ ROUSOS

REFERENCE NO. 55c,D SHEET 1 OF 45
 DATE 4-16-02
 WEATHER SUNNY
 TEMP. 70

ROUTE 199
 COUNTY WOOD
 TOWNSHIP WEBSTER
 SECTION 7
T 5 N R 12 E

TYPE MONUMENT _____ PK NAILS
 ON SURFACE - ~~BELOW~~ _____ YES
 LEFT - Q PAV'T - RIGHT _____ PC=.5' LT. PT=.5' RT.
10' TO LT. EDGE PAVEMENT
 S.L.M. _____ 969+48 _____ 976+33



SET PK NAIL
 & WASHER
 6-13-02
 D.C.H.

69' +/- TO NORTH
 END OF BRIDGE
 RAILING ON Q

498' +/- TO SOUTH
 END OF BRIDGE
 RAILING ON Q

POINTS ORIGINALLY SET BY
 CONSULTANT FOR BRIDGE WORK

Resurfaced 2002

O.D.O.T. DISTRICT 2 SURVEY OFFICE

PERSONNEL _____

REFERENCE NO. _____

SHEET 1 OF 26

NOTES CHENEY

H.C. BARBOUR

R.C. GEYMAN

DATE 10-4-1991

WEATHER SUNNY

TEMP. 75°

ROUTE 199

COUNTY WOOD

TOWNSHIP WEBSTER

SECTION 7

T.5N R.12E

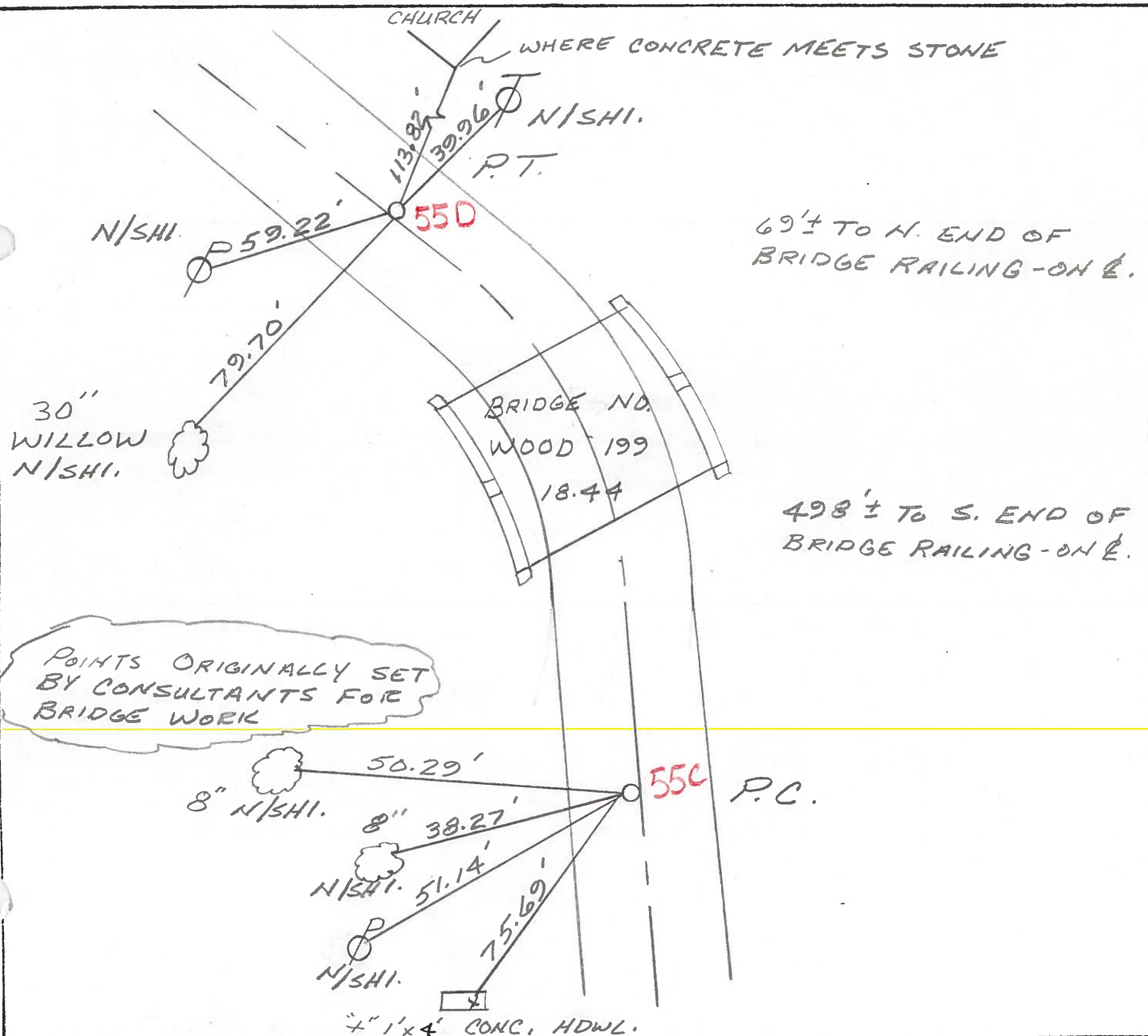
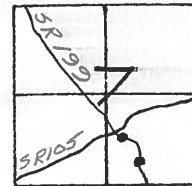
TYPE MONUMENT P.K.'S @ P.C. & P.T.

ON SURFACE - BELOW

LEFT - C. PAV'T. - RIGHT P.C. 0.5' LT., P.T. 0.5' RT.

TO RT. EDGE PAVEMENT

S.L.M. PK. 969+48 PT 976+33



O.D.O.T. DISTRICT 2 SURVEY OFFICE

PERSONNEL _____

REFERENCE NO. _____

SHEET _____ OF _____

NOTES BARNHISEL

H.C. SOCKMAN

R.C. HOFFMAN

DATE 7-13-87

WEATHER Cloudy

TEMP. +85°

ROUTE 199

COUNTY WOOD

TOWNSHIP Webster

SECTION 7

T. 5 N R. 12 E

TYPE MONUMENT P.C. - P.K. P.T. - P.K.

ON SURFACE - BELOW yes

LEFT - ☉ PAV'T. - RIGHT P.C. .6 Lt - P.T. .6 Rt

PC: 10.1 LT 10.1
PT: 9.5 RT 9.5 TO EDGE PAVEMENT

S.L.M. P.C. 967+07 P.T. 973+92

