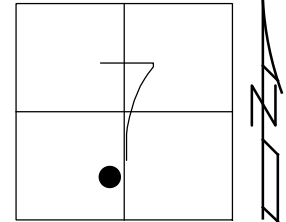


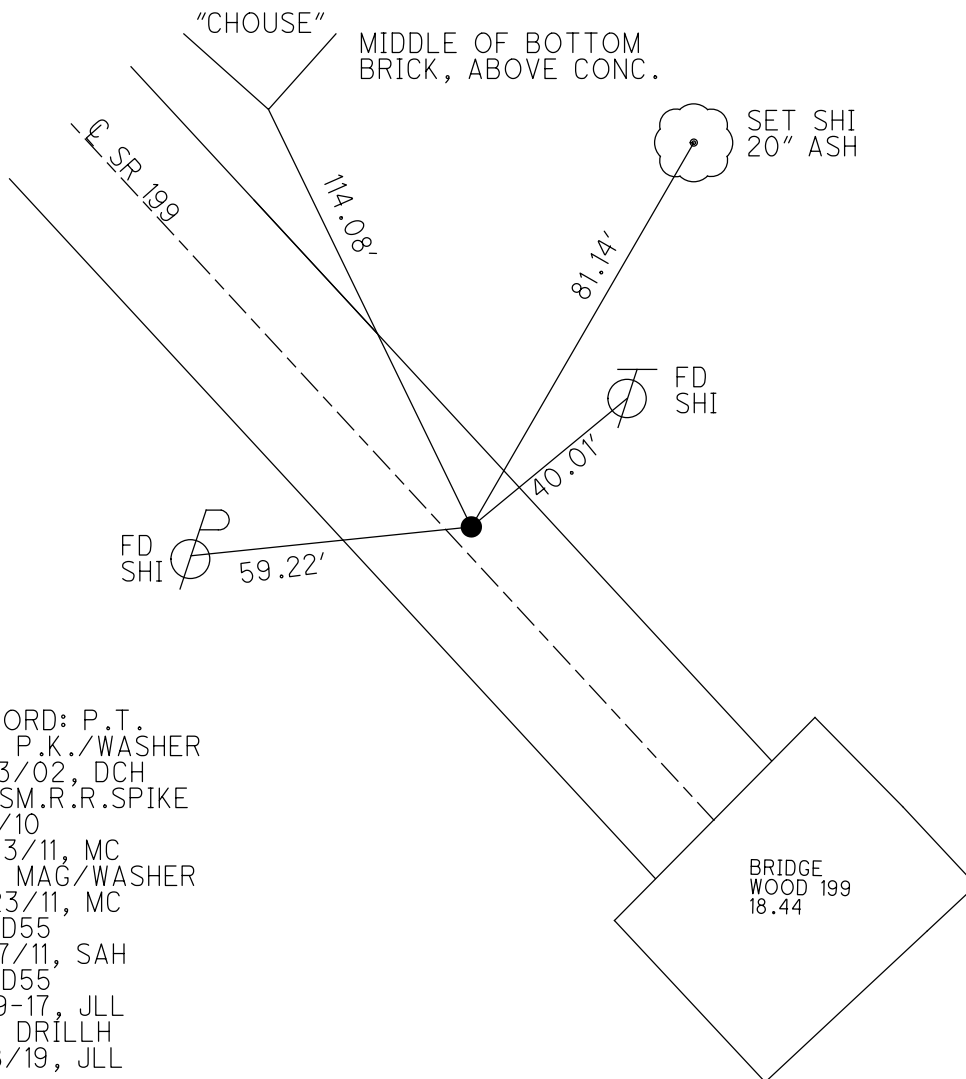
O.D.O.T. DISTRICT 2 SURVEY OFFICE (USE ONLY)

PERSONNEL _____ REFERENCE NO. 55 D SHEET 16 OF 75
 NOTES RHOADES DATE 6-19-17 ROUTE SR 199
 H.C. LEU WEATHER FAIR COUNTY WOOD
 R.C. CARSON TEMP. 70° TOWNSHIP WEBSTER
 _____ POORE _____ SECTION 7
 DWG BY AUBLE PID 101221 T 5 N R 12 E

TYPE MONUMENT MAG/WASHER
 ON SURFACE - ~~BELOW~~ ON _____
 OFFSET ☐ PAVEMENT 0.5 ~~±~~ : RT
10' TO RT EDGE PAVEMENT
 STATION: 985+80.65



HORZ. DATUM: NAD83 (2011) GEOID: 2012A
 GRID: NORTHING: 633928.091 EASTING: 1687945.558

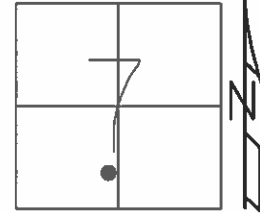


RECORD: P.T.
 SET P.K./WASHER
 6/13/02, DCH
 FD SM.R.R.SPIKE
 2/1/10
 6/23/11, MC
 SET MAG/WASHER
 11/23/11, MC
 REFD55
 12/7/11, SAH
 REFD55
 6-19-17, JLL
 SET DRILLH
 1/18/19, JLL

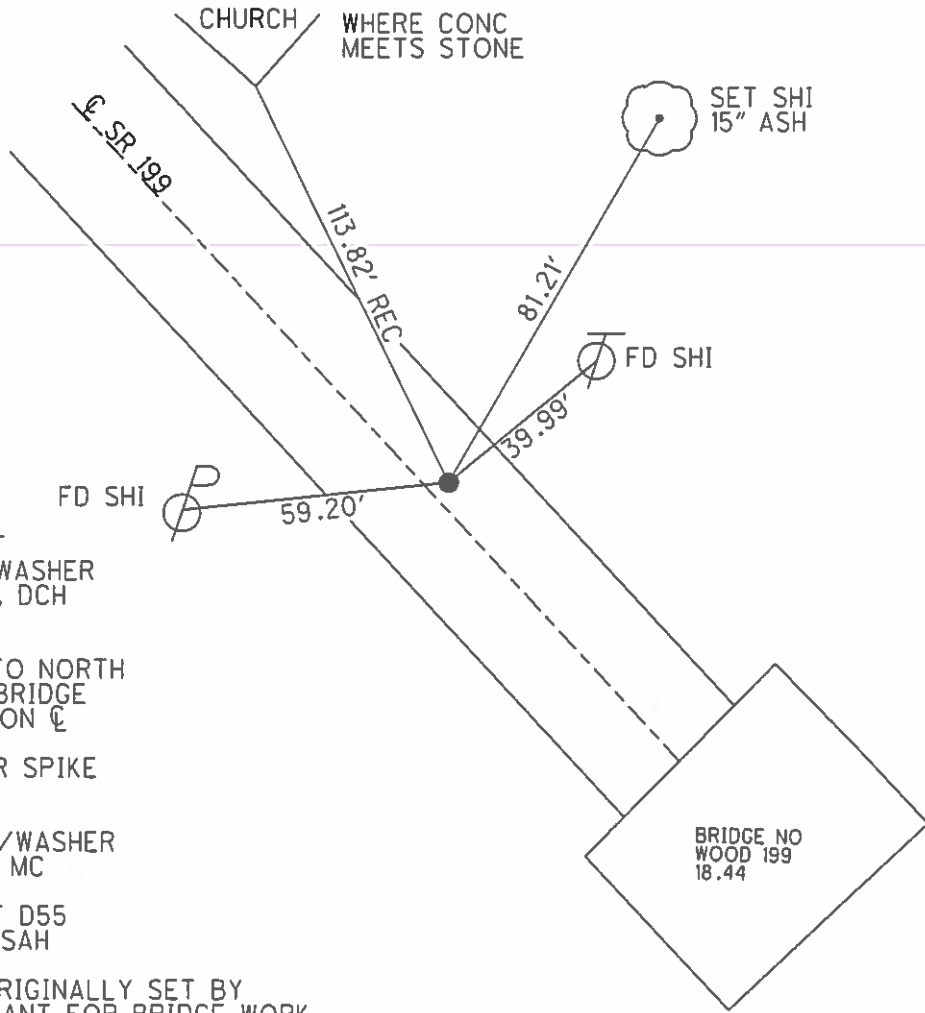
O.D.O.T. DISTRICT 2 SURVEY OFFICE (USE ONLY)

PERSONNEL _____ REFERENCE NO. 55 D SHEET 16 OF 72
 NOTES HUSS DATE 6/23/11 ROUTE SR 199
 H.C. HUSS WEATHER CLOUDY/RAIN COUNTY WOOD
 R.C. CANTERBURY TEMP. 71° TOWNSHIP WEBSTER
 _____ SECTION 7
 _____ T 5 N R 12 E

TYPE MONUMENT SM RR SPIKE
 ON SURFACE - ~~BELOW~~ ON
~~LEFT - C PAVT~~ - RIGHT 0.5'
10' TO RT EDGE PAVEMENT
 S.L.M. 985+80.65



GRID: NORTHING: 633928.157 EASTING: 1687945.490



NOTE: PT
 SET PK/WASHER
 6/13/02, DCH

NOTE:
 69'+/- TO NORTH
 END OF BRIDGE
 RAILING ON C

FD SM RR SPIKE
 2/1/10

SET MAG/WASHER
 11/23/11, MC

GPS, REF D55
 12/7/11, SAH

POINT ORIGINALLY SET BY
 CONSULTANT FOR BRIDGE WORK

O.D.O.T. DISTRICT 2 SURVEY OFFICE

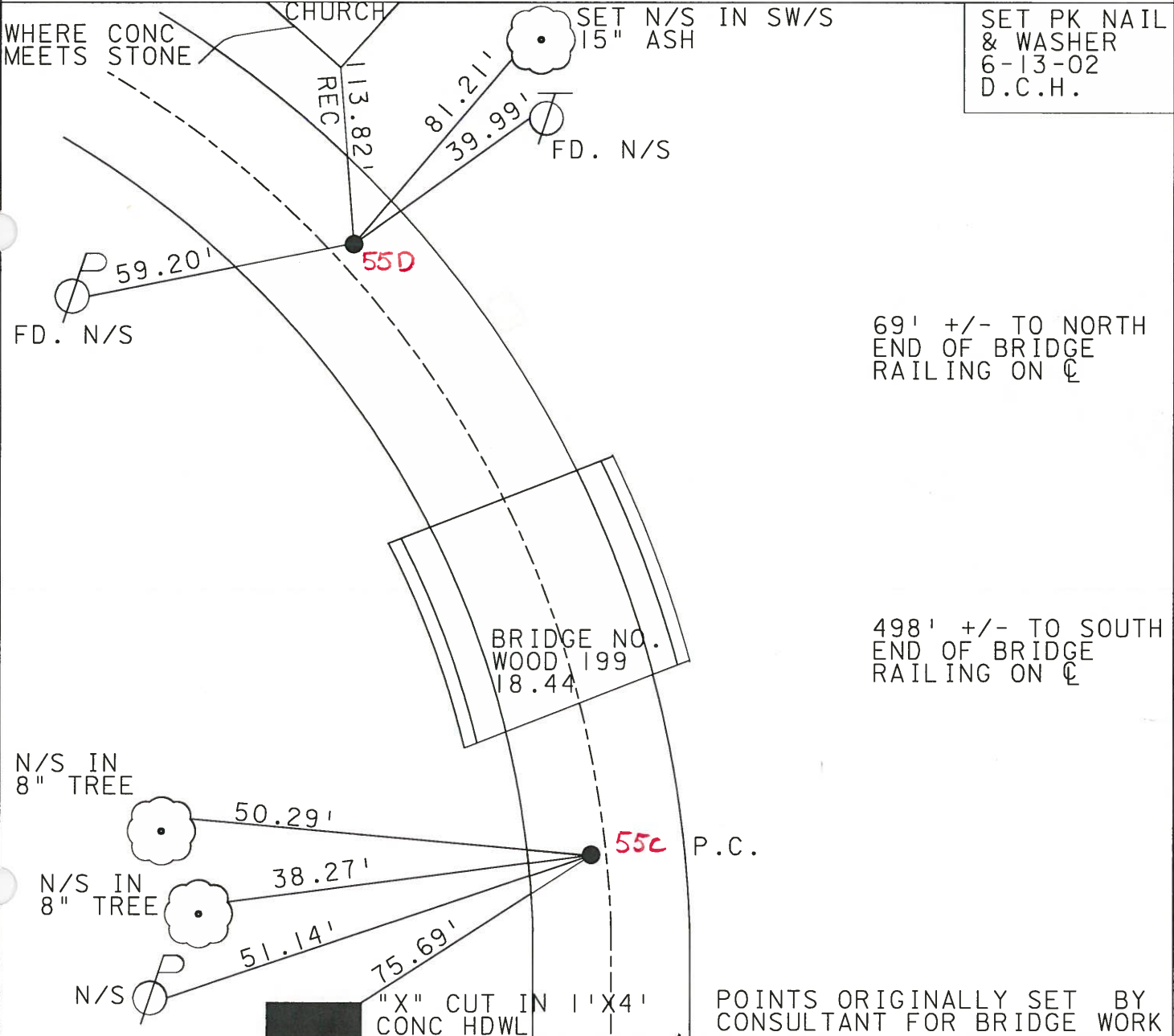
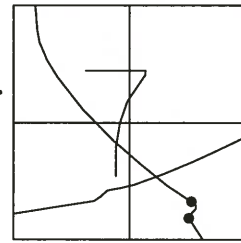
PERSONNEL

NOTES _____ ROUSOS
 H.C. _____ HOMAN
 R.C. _____ ROUSOS

REFERENCE NO. 55c,d SHEET 1 OF 45
 DATE 4-16-02
 WEATHER SUNNY
 TEMP. 70

ROUTE 199
 COUNTY WOOD
 TOWNSHIP WEBSTER
 SECTION 7
T 5 N R 12 E

TYPE MONUMENT _____ PK NAILS
 ON SURFACE - ~~BELOW~~ _____ YES
 LEFT - Q PAV'T - RIGHT _____ PC = .5' LT. PT = .5' RT.
10' TO LT. EDGE PAVEMENT
 S.L.M. _____ 969+48 _____ 976+33



SET PK NAIL & WASHER
 6-13-02
 D.C.H.

69' +/- TO NORTH
 END OF BRIDGE
 RAILING ON Q

498' +/- TO SOUTH
 END OF BRIDGE
 RAILING ON Q

POINTS ORIGINALLY SET BY
 CONSULTANT FOR BRIDGE WORK

Resurfaced 2002

O.D.O.T. DISTRICT 2 SURVEY OFFICE

PERSONNEL _____

REFERENCE NO. _____

SHEET 1 OF 26

NOTES CHENEY

H.C. BARBOUR

R.C. GEYMAN

DATE 10-4-1991

WEATHER SUNNY

TEMP. 75°

ROUTE 199

COUNTY WOOD

TOWNSHIP WEBSTER

SECTION 7

T.5N R.12E

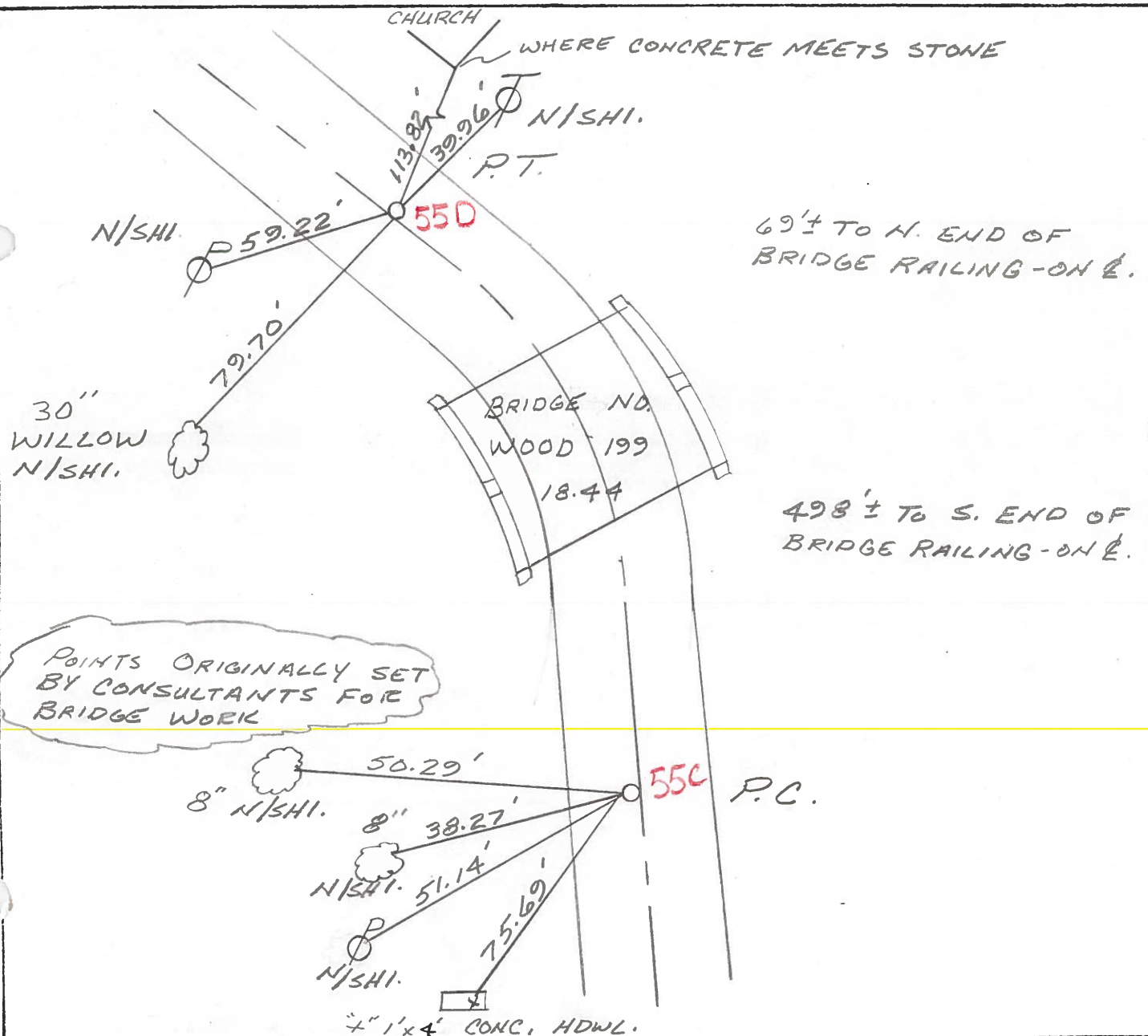
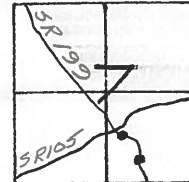
TYPE MONUMENT P.K.'S @ P.C. & P.T.

ON SURFACE - BELOW

LEFT - C. PAV'T. - RIGHT P.C. 0.5' LT., P.T. 0.5' RT.

TO RT. EDGE PAVEMENT

S.L.M. PK. 969+48 PT 976+33



O.D.O.T. DISTRICT 2 SURVEY OFFICE

PERSONNEL _____

REFERENCE NO. _____

SHEET _____ OF _____

NOTES BARNHISEL

H.C. SOCKMAN

R.C. HOFFMAN

DATE 7-13-87

WEATHER Cloudy

TEMP. +85°

ROUTE 199

COUNTY WOOD

TOWNSHIP Webster

SECTION 7

T. 5 N R. 12 E

TYPE MONUMENT P.C. - P.K. P.T. - P.K.

ON SURFACE - BELOW yes

LEFT - € PAV'T. - RIGHT P.C. .6 Lt - P.T. .6 Rt

PC: 10.1 LT 10.1
PT: 9.5 RT 9.5 TO EDGE PAVEMENT

S.L.M. P.C. 967+07 P.T. 973+92

