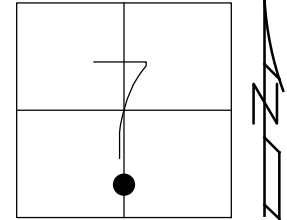


O.D.O.T. DISTRICT 2 SURVEY OFFICE (USE ONLY)

PERSONNEL _____ REFERENCE NO. 56 SHEET 20 OF 78
 NOTES AUBLE DATE 5/23/23 ROUTE SR 199
 H.C. NIESE WEATHER CLEAR COUNTY WOOD
 R.C. AUBLE TEMP. 63° TOWNSHIP WEBSTER
 DWG BY RHOADES PID PAVING TRAIN SECTION 7
 T 5 N R 12 E

TYPE MONUMENT MAG NAIL
 ON SURFACE - ~~BELOW~~ ON
 OFFSET \odot PAVEMENT 6.3' LT : ~~RT~~
- TO - EDGE PAVEMENT
 STATION: 982+38

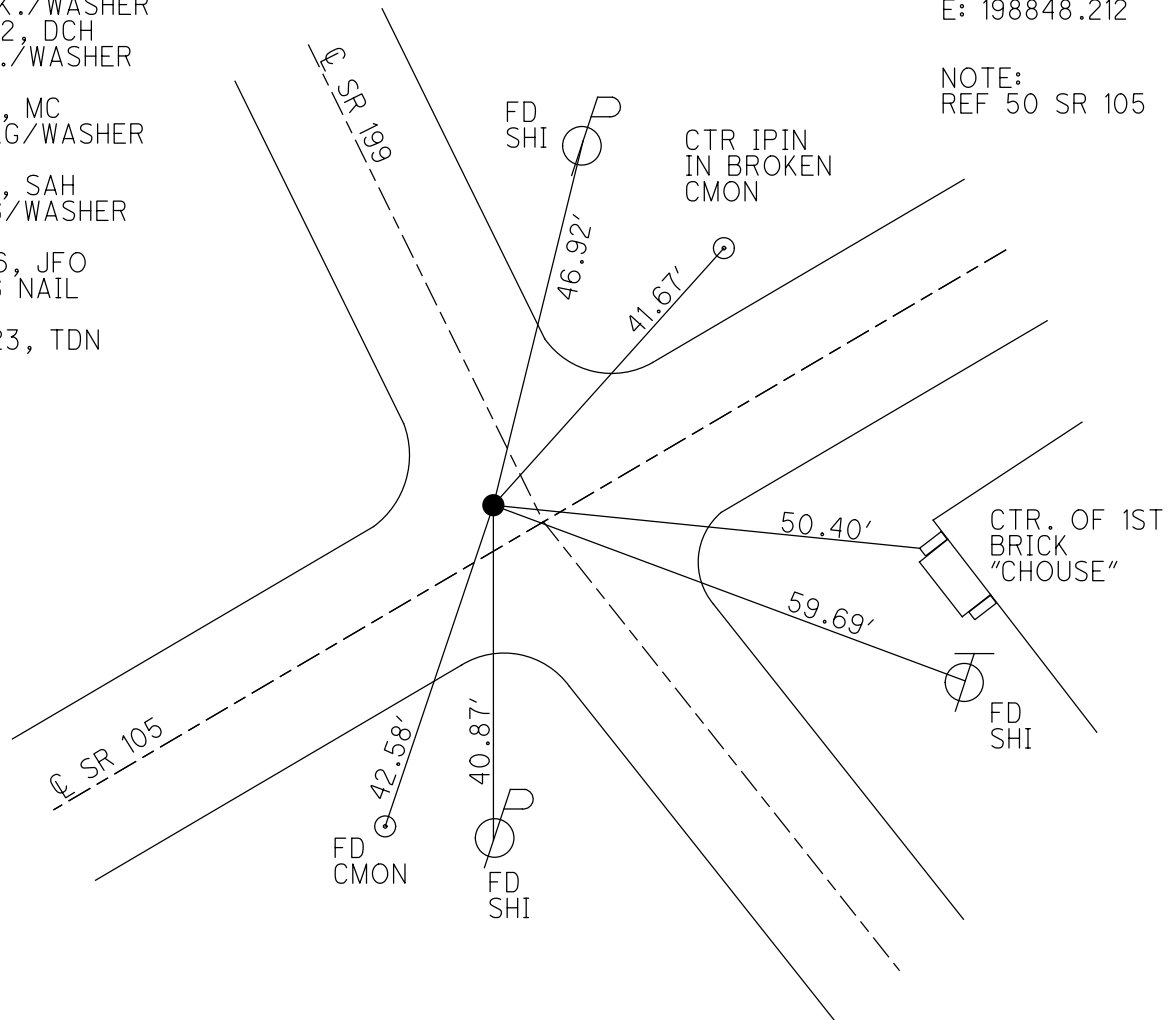
HORZ.DATUM: NAD83 2011 GEOID: NAVD88 2018
 GRID: NORTHING: 634071.996 EASTING: 1687824.984



RECORD:
 SET P.K./WASHER
 6/13/02, DCH
 FD P.K./WASHER
 SV56
 7/21/11, MC
 SET MAG/WASHER
 RN8
 12/7/11, SAH
 FD MAG/WASHER
 REF50
 6/10/16, JFO
 FD MAG NAIL
 REF56
 5/23/23, TDN

WOOD LPD:
 N: 456381.120
 E: 198848.212

NOTE:
 REF 50 SR 105



O.D.O.T. DISTRICT 2 SURVEY OFFICE (USE ONLY)

PERSONNEL

REFERENCE NO. 56

SHEET 17 OF 75

NOTES RHOADES

DATE 6-19-17

ROUTE SR 199

H.C. LEU

WEATHER CLEAR

COUNTY WOOD

R.C. CARSON

TEMP. 70°

TOWNSHIP WEBSTER

POORE

SECTION 7

DWG BY AUBLE PID 101221

T 5 N R 12 E

TYPE MONUMENT MAG/WASHER

ON SURFACE - ~~BELOW~~ ON

OFFSET 6.3' LT : ~~RT~~

- TO - EDGE PAVEMENT 6.2' N. OF SR 105

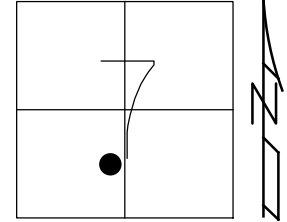
STATION: 982+38

HORZ. DATUM: NAD83 (2011)

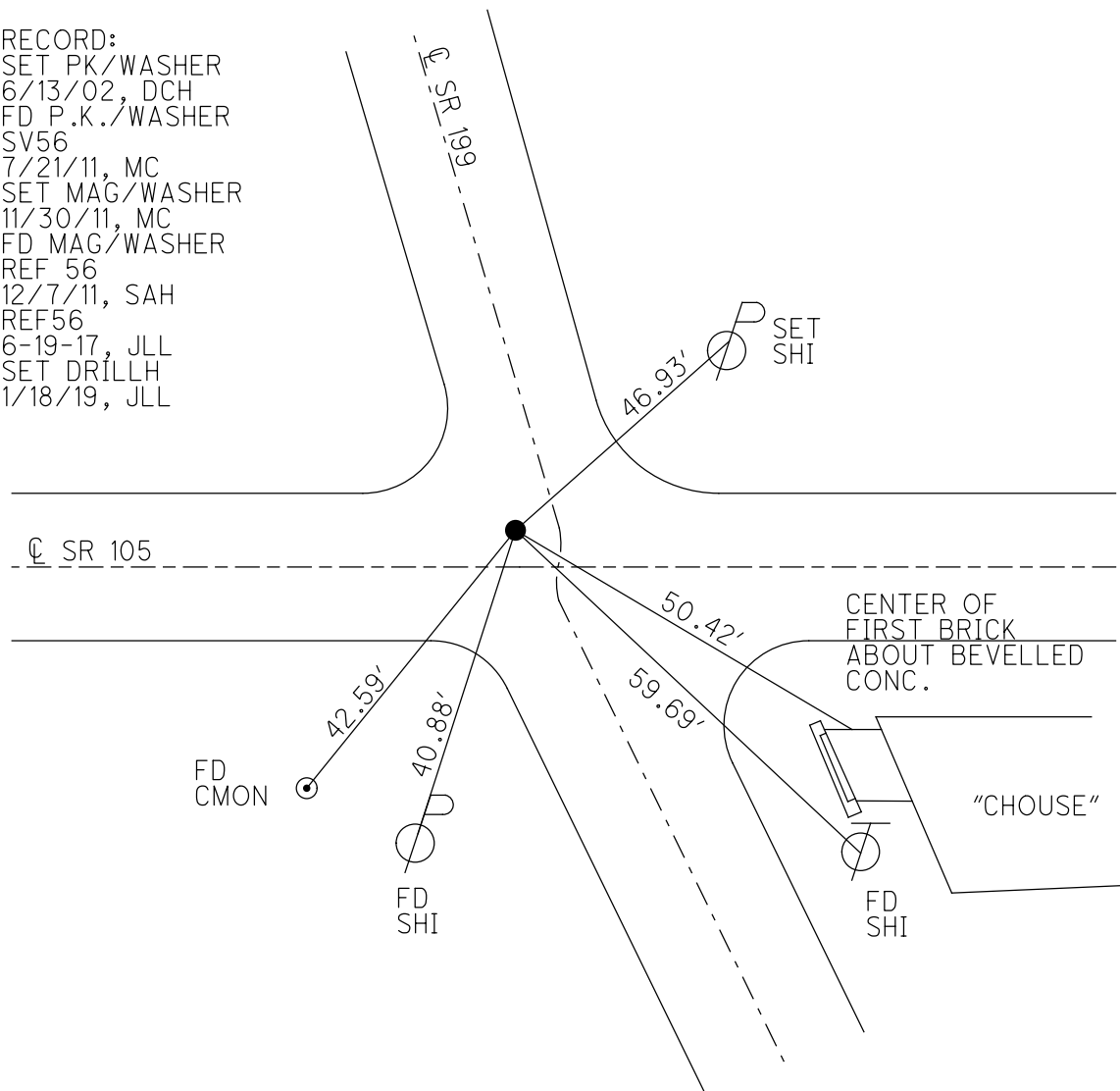
GEOID: 2012A

GRID: NORTHING: 634071.996

EASTING: 1687824.984



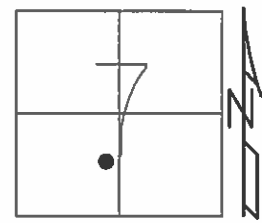
RECORD:
 SET PK/WASHER
 6/13/02, DCH
 FD P.K./WASHER
 SV56
 7/21/11, MC
 SET MAG/WASHER
 11/30/11, MC
 FD MAG/WASHER
 REF 56
 12/7/11, SAH
 REF56
 6-19-17, JLL
 SET DRILLH
 1/18/19, JLL



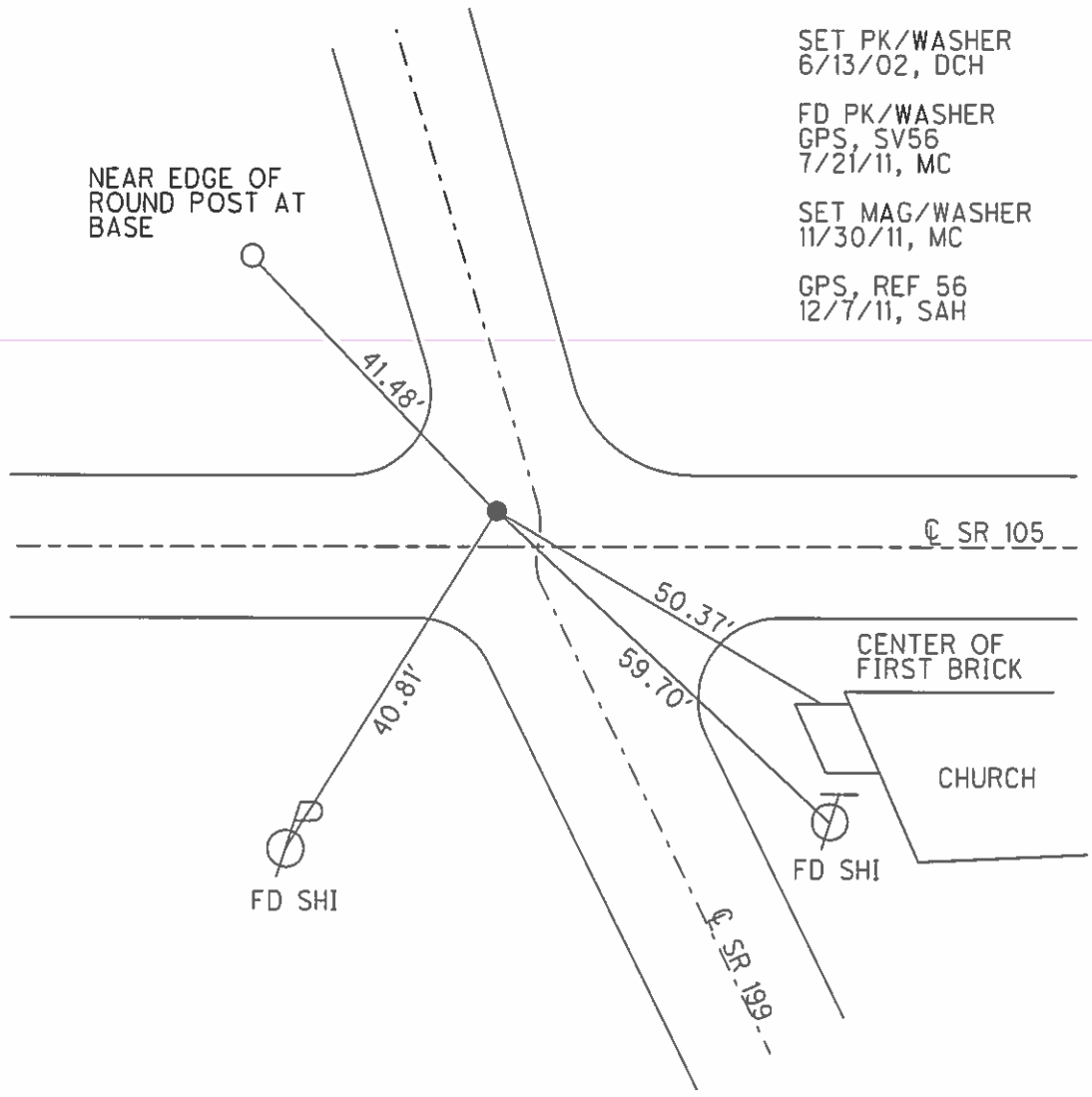
O.D.O.T. DISTRICT 2 SURVEY OFFICE (USE ONLY)

PERSONNEL _____ REFERENCE NO. 56 SHEET 17 OF 72
 NOTES _____ FINGER _____ DATE 7/21/11 ROUTE SR 199
 H.C. _____ HUSS _____ WEATHER CLEAR COUNTY WOOD
 R.C. _____ CANTERBURY _____ TEMP. 87° TOWNSHIP WEBSTER
 _____ SECTION 7
 T 5 N R 12 E

TYPE MONUMENT _____ PK NAIL/WASHER
 ON SURFACE - ~~BELOW~~ _____ ON
 LEFT - ~~C PAV'T~~ - ~~RIGHT~~ 6.3' LT OF C
6.2' N. OF C SR 105
 _____ TO _____ EDGE PAVEMENT
 S.L.M. _____ 982+38



GRID: NORTHING: 634072.071 EASTING: 1687824.979



O.D.O.T. DISTRICT 2 SURVEY OFFICE

59 of 63 on SR 105

PERSONNEL

REFERENCE NO. 56

SHEET 2 OF 45

NOTES ROUSOS

DATE 4-2-02

ROUTE 199

H.C. HOMAN

WEATHER CLOUDY

COUNTY WOOD

R.C. ROUSOS

TEMP. 60

TOWNSHIP WEBSTER

SECTION 7

T 5 N R 12 E

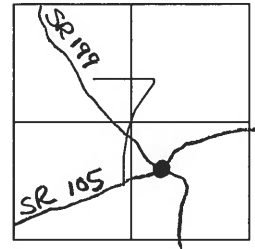
TYPE MONUMENT PK NAIL & WASHER

ON SURFACE - ~~BELOW~~ YES

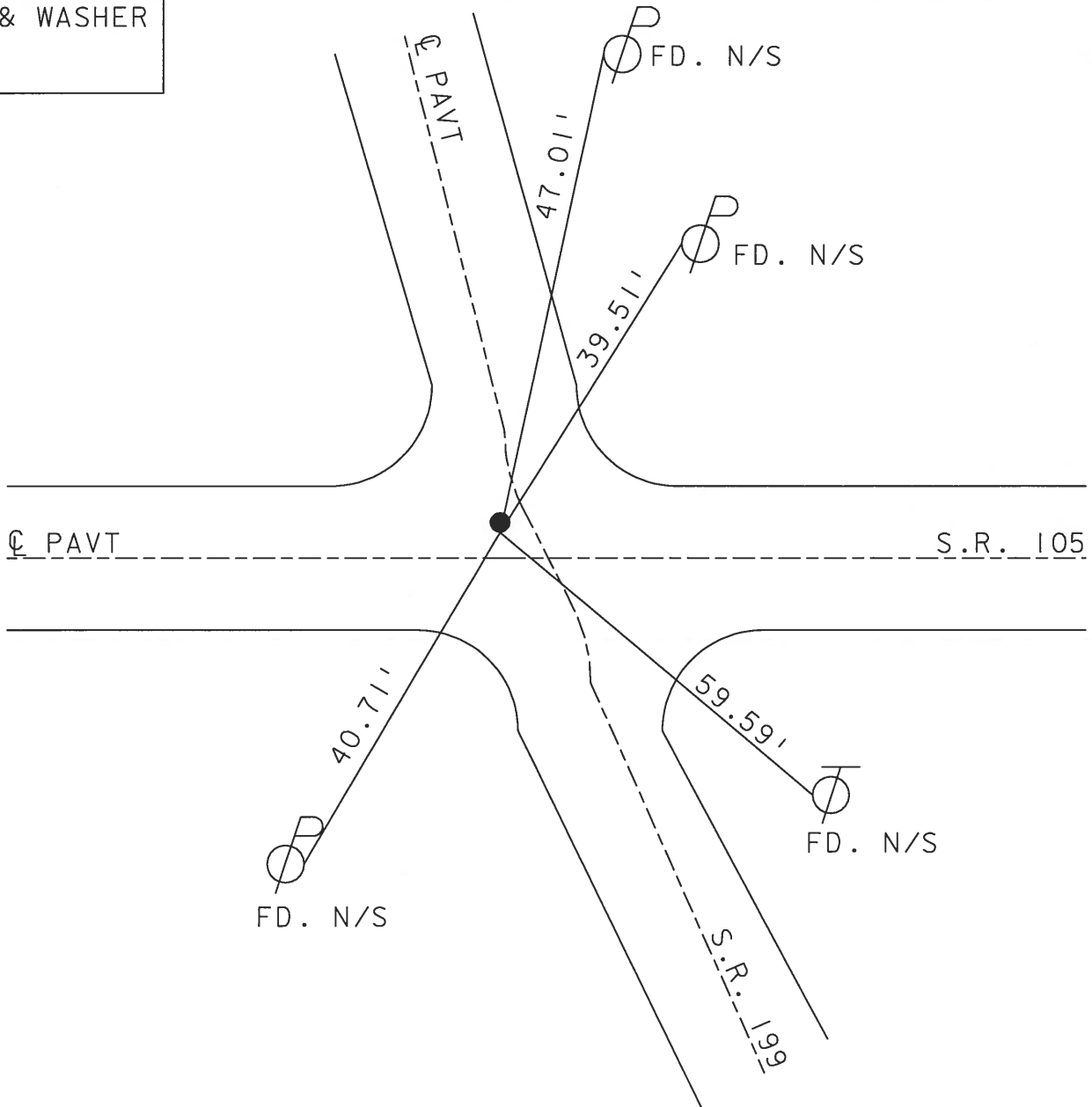
LEFT - Q PAV'T - ~~RIGHT~~ 9.1

4' N OF Q 105 TO EDGE PAVEMENT

S.L.M. 982+38



SET PK & WASHER
6-13-02
D.C.H.



O.D.O.T. DISTRICT 2 SURVEY OFFICE

59 of 63 sheets

PERSONNEL _____

REFERENCE NO. _____

SHEET 2 OF 26

NOTES ROUSOS

DATE 4-2-02

ROUTE 199

H.C. HOMAN

WEATHER CLOUDY

COUNTY WOOD

R.C. ROUSOS

TEMP. 60

TOWNSHIP WEBSTER

SECTION 7

T 5 N R 12 E

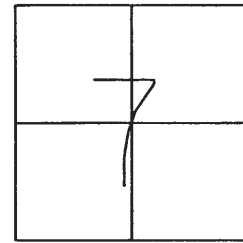
TYPE MONUMENT PK NAIL & WASHER

ON SURFACE - ~~BELOW~~ YES

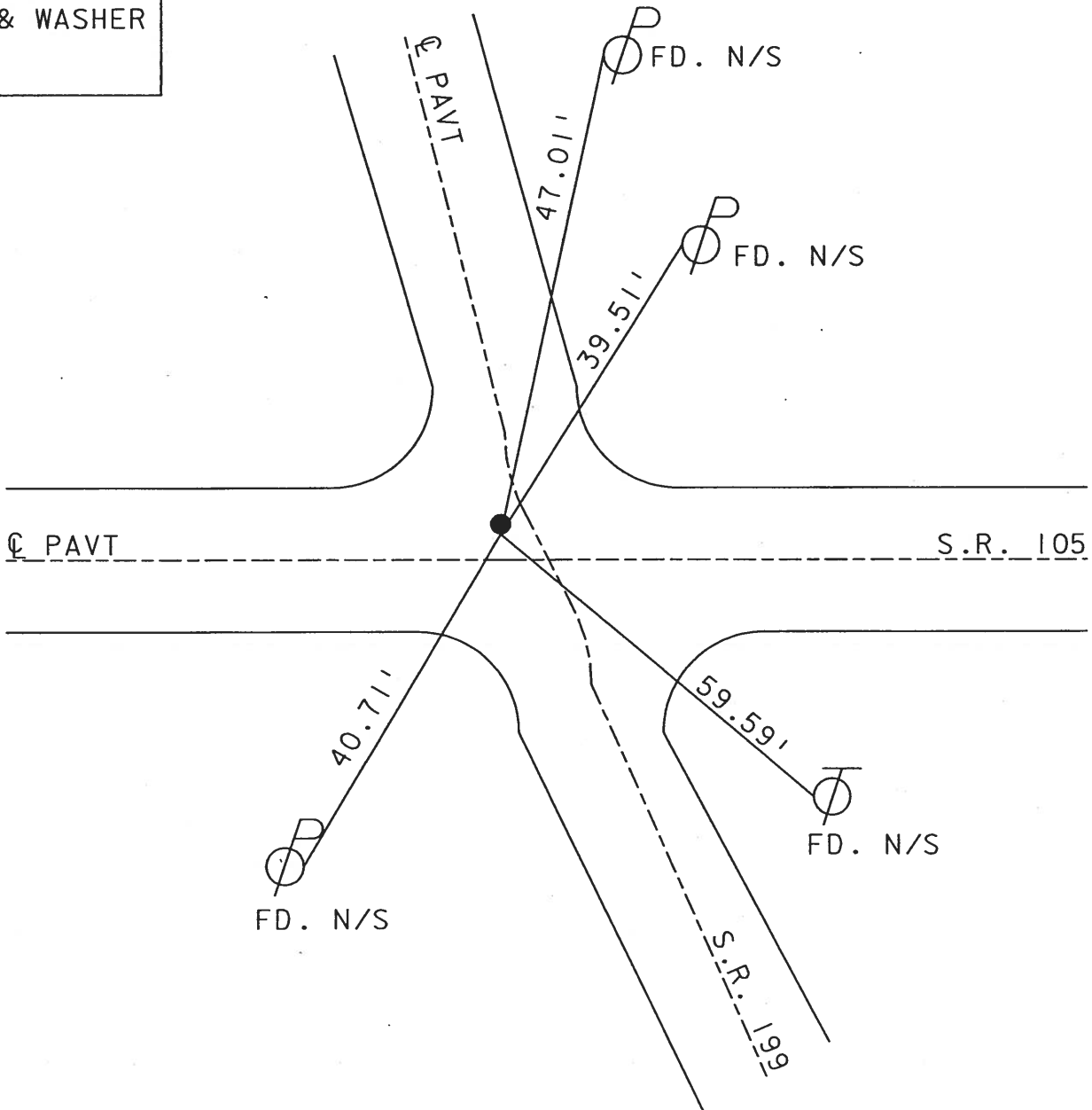
LEFT - ☉ PAVT - ~~RIGHT~~ 9.1

4' N OF ☉ +05 TO EDGE PAVEMENT

S.L.M. 982+38



SET PK & WASHER
6-13-02
D.C.H.



O.D.O.T. DISTRICT 2 SURVEY OFFICE

PERSONNEL

REFERENCE NO. 56

SHEET 2 OF 26

NOTES CHENEY

H.C. BARBOUR

DATE 10-4-1991

ROUTE 199

R.C. GEYMAN

WEATHER SUNNY

COUNTY WOOD

TEMP. 75°

TOWNSHIP WEBSTER

SECTION 7

T5N R12E

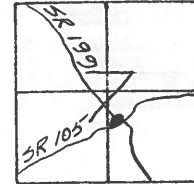
TYPE MONUMENT SET PK/WASHER

ON SURFACE - BELOW

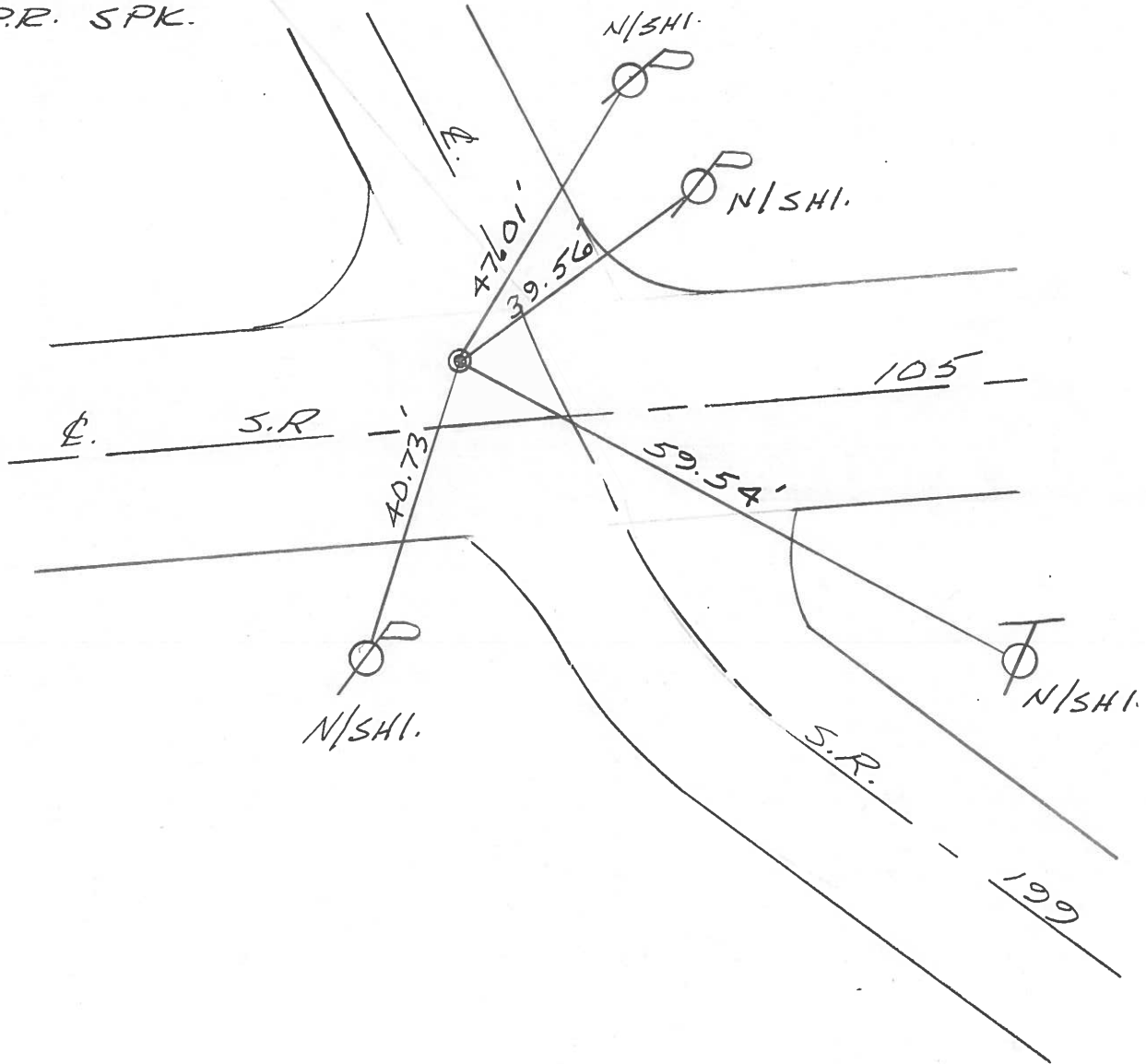
LEFT-0 PAV'T. - RIGHT 9.1'

4' N. OF SR 105 TO EDGE PAVEMENT

S.L.M. 980+61



PREVIOUS MONUMENT:
SM. R.R. SPK.



O.D.O.T. DISTRICT 2 SURVEY OFFICE

PERSONNEL

REFERENCE NO. 56

SHEET OF

NOTES BARNHISEL

H.C. SOCKMAD

R.C. HOFFMAN

DATE 7-13-87

WEATHER SUNNY

TEMP. +80°

ROUTE 199

COUNTY WOOD

TOWNSHIP Webster

SECTION 7

T. 5 N R. 12 E

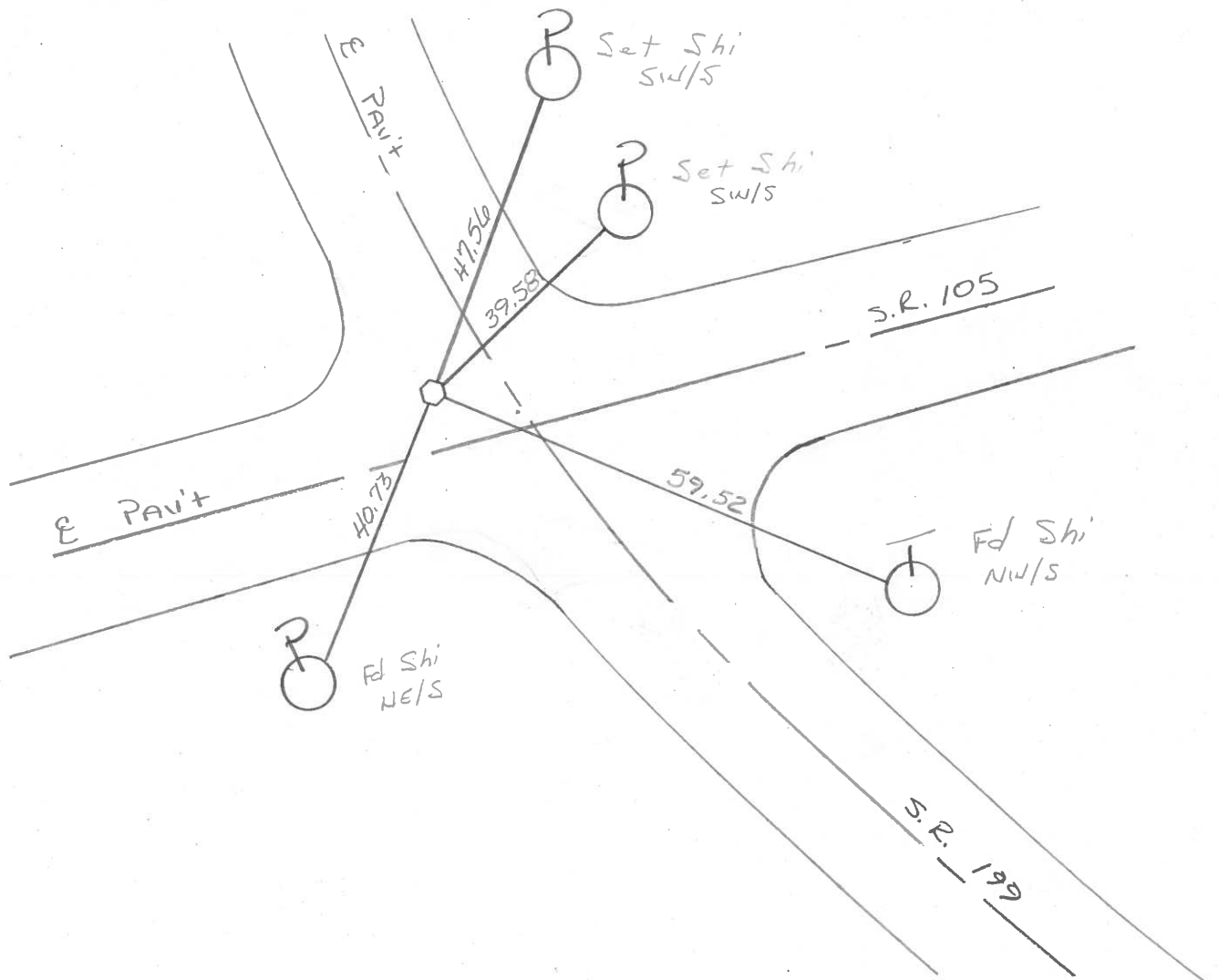
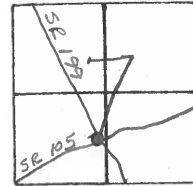
TYPE MONUMENT 5m RR Spk

ON SURFACE - BELOW yes

LEFT - 0 PAV'T. - RIGHT 9.1

4.2 TO N OF S.R. 105 EDGE PAVEMENT

S.L.M. 978+20



O.D.O.T. DISTRICT 2 SURVEY OFFICE

SHEET

OF

County WOOD S.R. 199

Township WEBSTER

Section 7

T N, R E

Personnel TOMSIK

NEUSER

VANYO

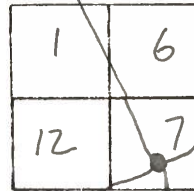
GRANATA

#56

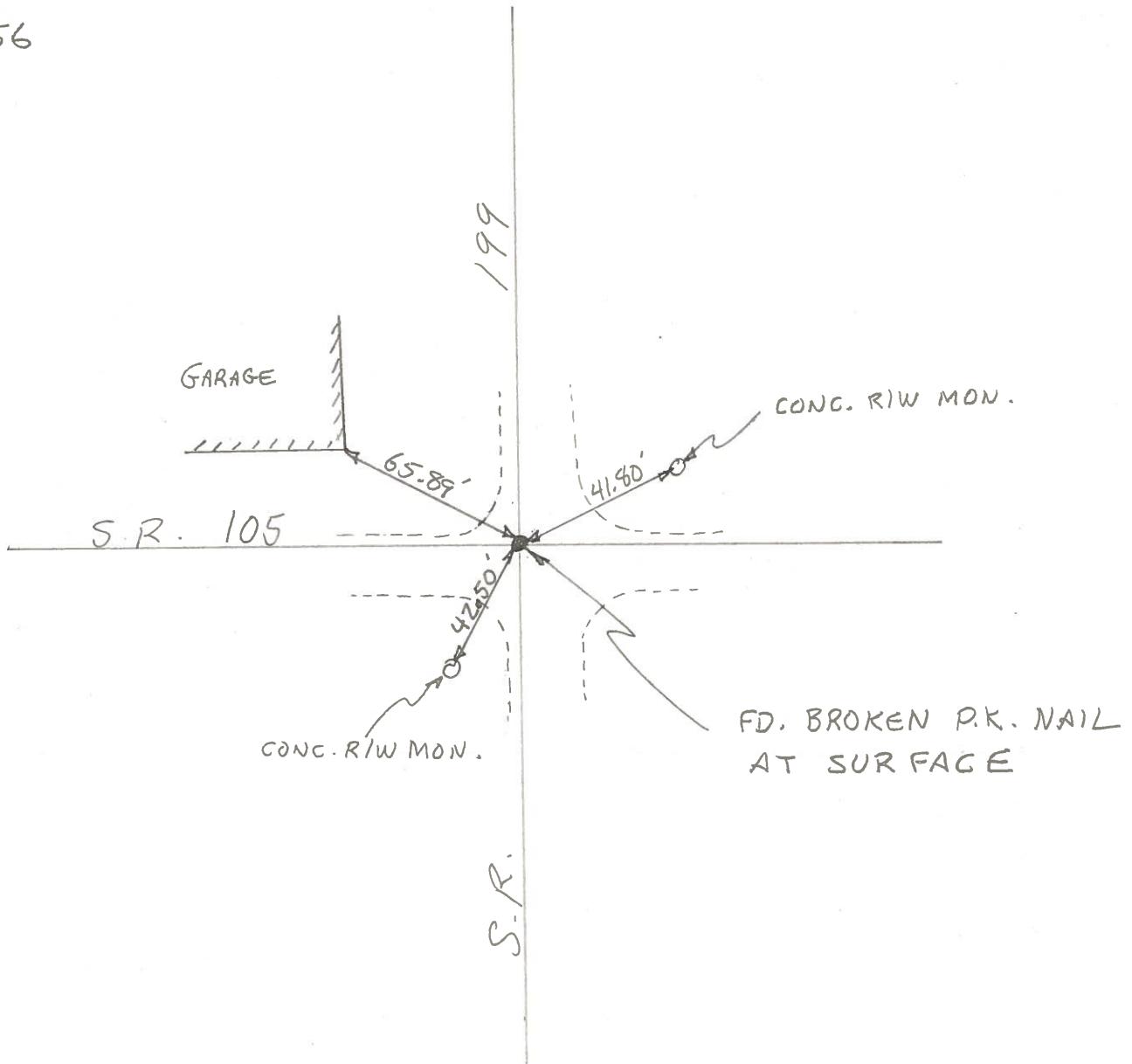
Date 12-1-71 (CHKD 8-21-73)

Weather _____

Temp. _____



#56



COPIED

PERSONNEL	TITLE	PERSONNEL	TITLE
TOMSIK			
NEUSER			
VANYO			
GRANATA			

COUNTY WOOD DATE 12-1-71
 S. R. 199 WEATHER _____
 SEC. _____ TEMP. _____

DESCRIPTION _____ LEFT _____ CENTER LINE _____ RIGHT _____ JOB NO. _____

