

O.D.O.T. DISTRICT 2 SURVEY OFFICE (USE ONLY)

PERSONNEL

REFERENCE NO. 56 B

SHEET 19 OF 75

NOTES RHOADES DATE 6-19-17
 H.C. LEU WEATHER FAIR
 R.C. CARSON TEMP. 70°
POORE

ROUTE SR 199
 COUNTY WOOD
 TOWNSHIP WEBSTER
 SECTION 7
 T 5 N R 12 E

DWG BY AUBLE PID 101221

TYPE MONUMENT MAG/WASHER

ON SURFACE - ~~BELOW~~ ON

OFFSET $\text{\textcircled{C}}$ PAVEMENT 0.8' LT : ~~RT~~

7.5' TO LT EDGE PAVEMENT

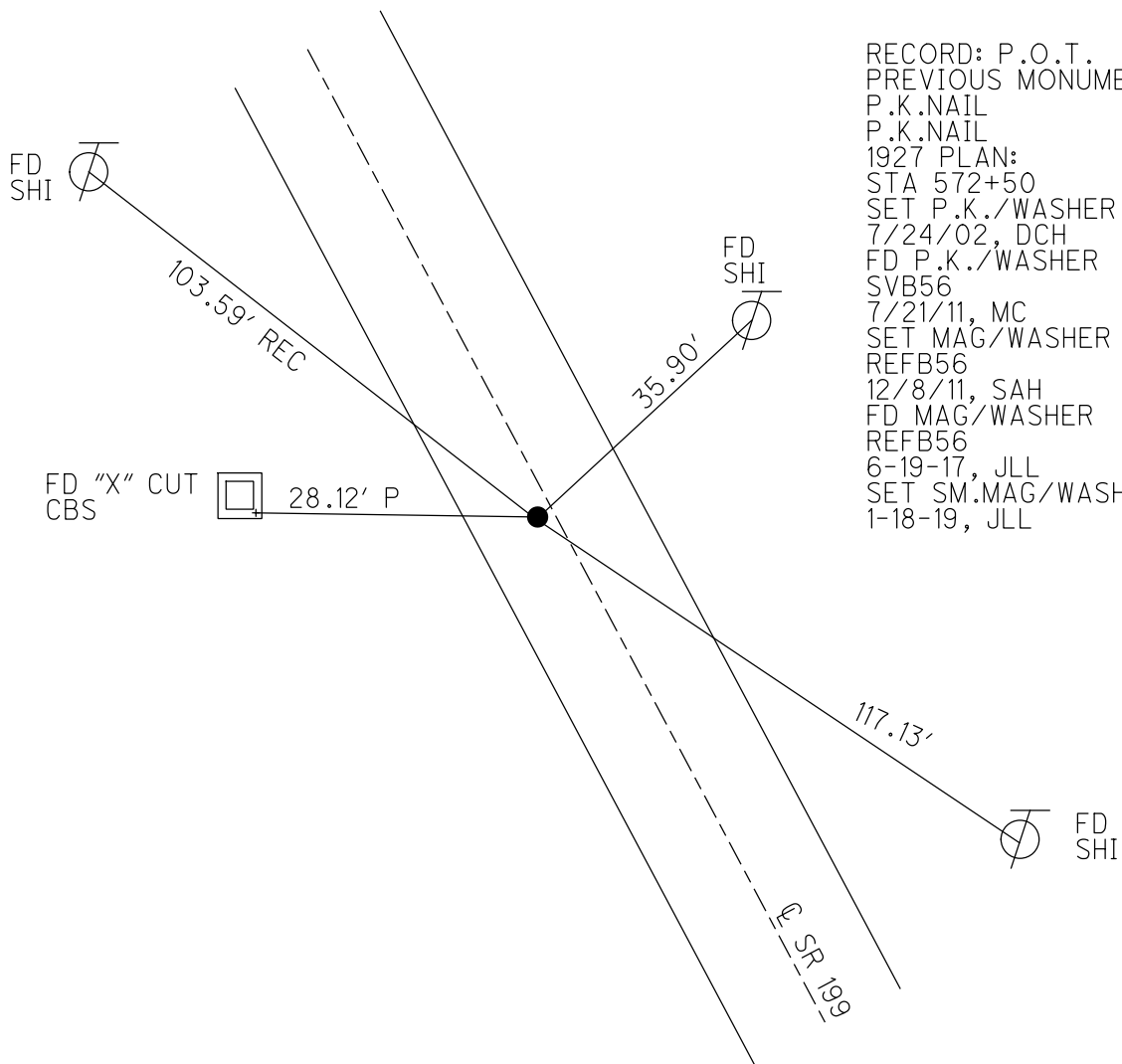
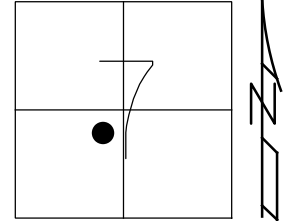
STATION: 992+87

HORZ.DATUM: NAD83 (2011)

GEOID: 2012A

GRID: NORTHING: 635229.689

EASTING: 1687253.143

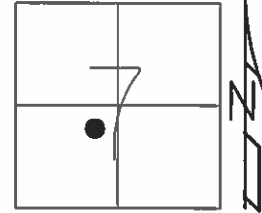


RECORD: P.O.T.
 PREVIOUS MONUMENTS:
 P.K.NAIL
 P.K.NAIL
 1927 PLAN:
 STA 572+50
 SET P.K./WASHER
 7/24/02, DCH
 FD P.K./WASHER
 SVB56
 7/21/11, MC
 SET MAG/WASHER
 REFB56
 12/8/11, SAH
 FD MAG/WASHER
 REFB56
 6-19-17, JLL
 SET SM.MAG/WASHER
 1-18-19, JLL

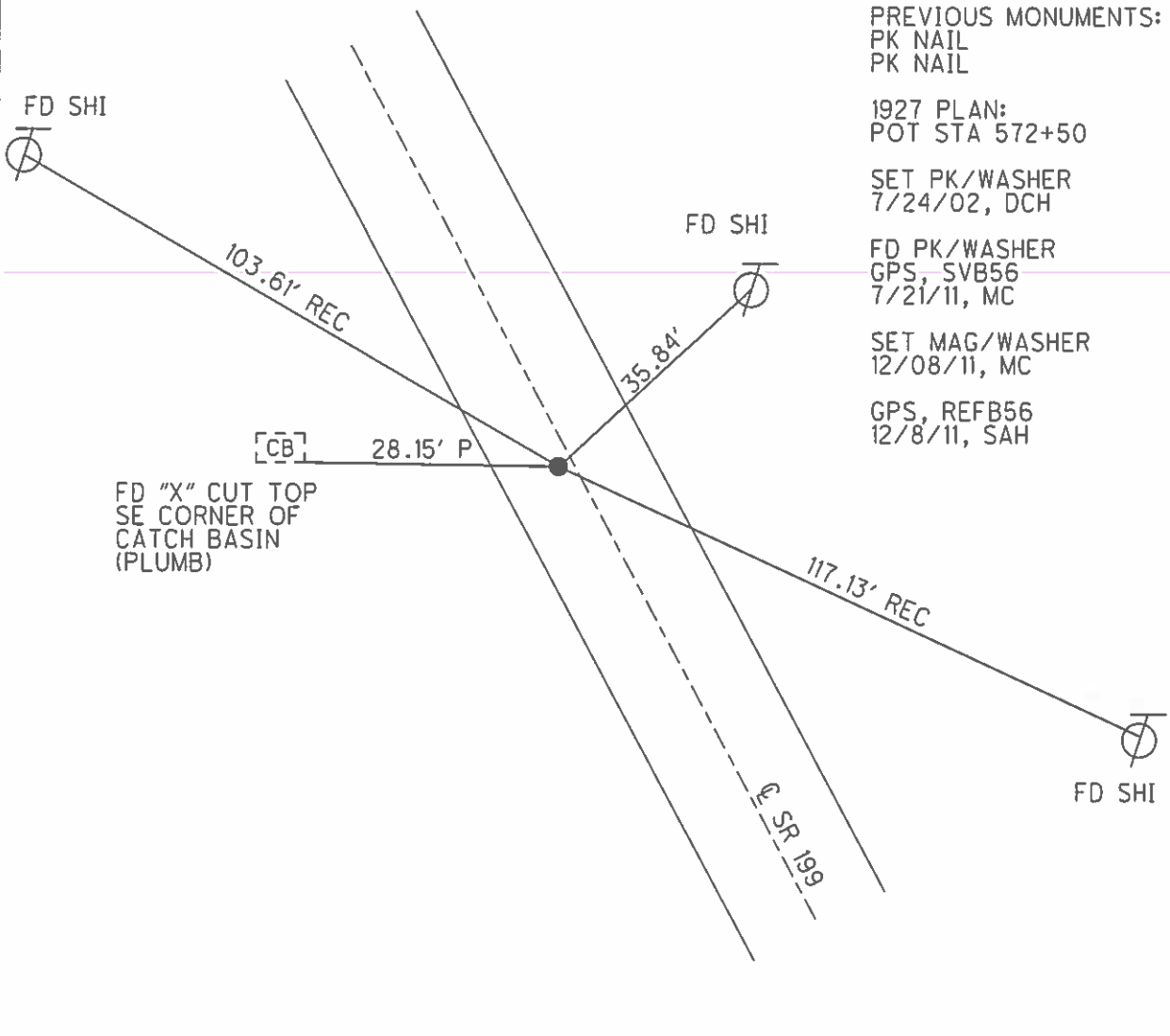
O.D.O.T. DISTRICT 2 SURVEY OFFICE (USE ONLY)

PERSONNEL _____ REFERENCE NO. 56 B SHEET 19 OF 72
 NOTES _____ FINGER _____ DATE 7/21/11 ROUTE SR 199
 H.C. _____ HUSS _____ WEATHER SUNNY COUNTY WOOD
 R.C. _____ CANTERBURY _____ TEMP. 87° TOWNSHIP WEBSTER
 _____ SECTION 7
 _____ T 5 N R 12 E

TYPE MONUMENT _____ PK NAIL/WASHER
 ON SURFACE - ~~BELOW~~ _____ ON _____
 LEFT - ~~C~~ PAV'T - ~~RIGHT~~ _____ 0.8'
 _____ 7.5' TO LT EDGE PAVEMENT
 S.L.M. _____ 992+87



GRID: NORTHING: 635229.735 EASTING: 1687253.051



PREVIOUS MONUMENTS:
 PK NAIL
 PK NAIL
 1927 PLAN:
 POT STA 572+50
 SET PK/WASHER
 7/24/02, DCH
 FD PK/WASHER
 GPS, SVB56
 7/21/11, MC
 SET MAG/WASHER
 12/08/11, MC
 GPS, REFB56
 12/8/11, SAH

FD "X" CUT TOP
 SE CORNER OF
 CATCH BASIN
 (PLUMB)

O.D.O.T. DISTRICT 2 SURVEY OFFICE

PERSONNEL

REFERENCE NO. 56B

SHEET 4 OF 45

NOTES ROUSOS

DATE 4-2-02

ROUTE 199

H.C. HOMAN

WEATHER CLOUDY

COUNTY WOOD

R.C. ROUSOS

TEMP. 60

TOWNSHIP WEBSTER

SECTION 7

T5 N R12 E

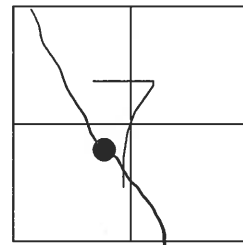
TYPE MONUMENT PK NAIL & WASHER

ON SURFACE - ~~BELOW~~ YES

LEFT - Q PAVT - ~~RIGHT~~ 2'

7.5' TO LT EDGE PAVEMENT

S.L.M. 992+87



SET PK & WASHER
7-24-02
D.C.H.

PREVIOUS MONUMENTS:
P.K. NAIL
P.K. NAIL

1927 PLAN:
P.O.T. STA 572+50

FD. N/S

103.72'
REC.

Q PAVT

35.70'
FD. N/S

FD. "X" CUT
S.E. CORNER
CATCH BASIN
(PLUMB)

[CB] 28.22'
TOP (P.)

117.53'
REC.

S.R. 199

FD. N/S

O.D.O.T. DISTRICT 2 SURVEY OFFICE

PERSONNEL

REFERENCE NO. 56-B SHEET 4 OF 26

NOTES CHENEY

H.C. BARBOUR

R.C. GEYMAN

DATE 11-4-1991

WEATHER SUNNY

TEMP. 75°

ROUTE 199

COUNTY WOOD

TOWNSHIP WEBSTER

SECTION 7

T5N R12E

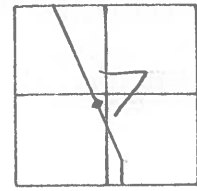
TYPE MONUMENT SET P.K./WASHER

ON SURFACE - BELOW

LEFT - & PAV'T. - RIGHT 2'

7.5 TO W EDGE PAVEMENT

S.L.M. 991+10

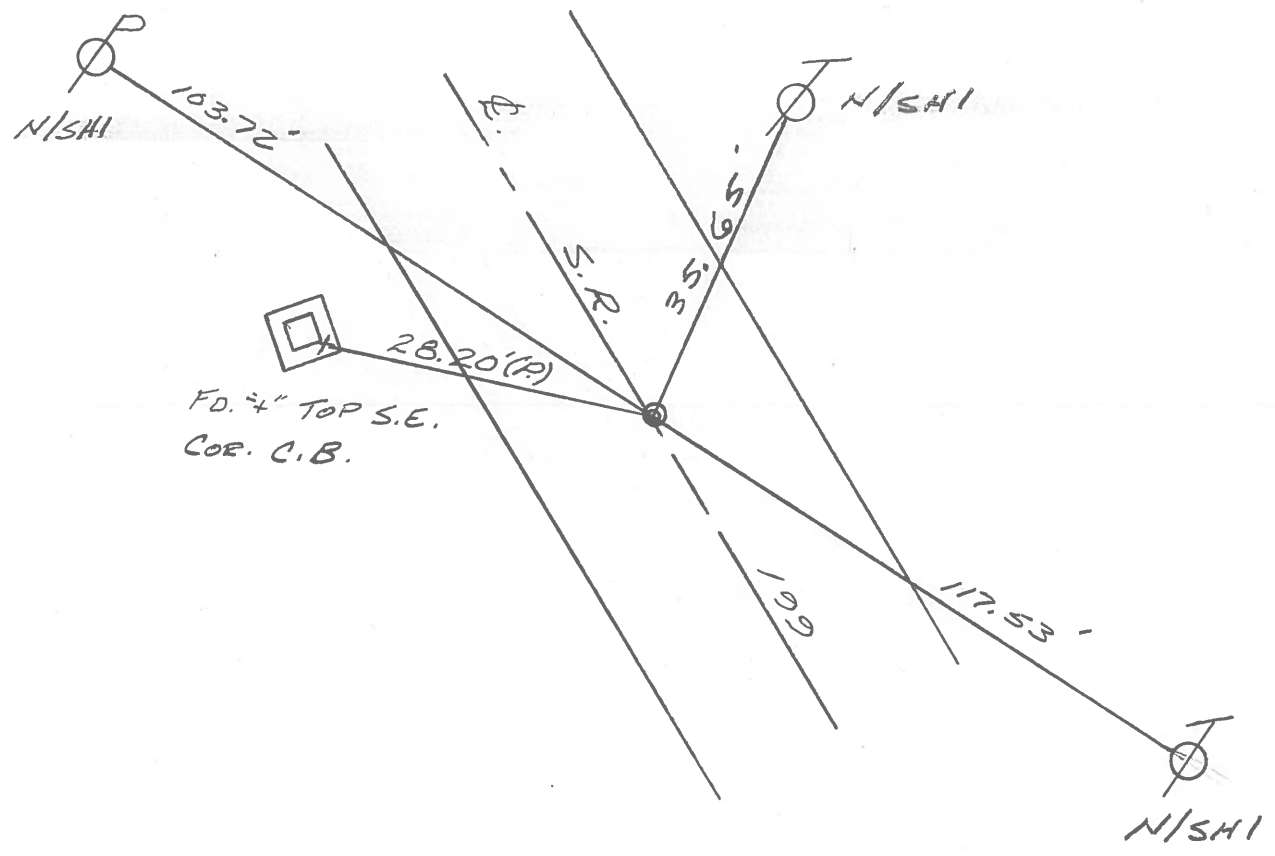


PREVIOUS MONUMENTS:

- P.K.
- P.K.

1927 PLAN:

P.O.T. STA. 572+50



Q.D.O.T. DISTRICT 2 SURVEY OFFICE

SHEET _____ OF _____

County WOOD S.R. 199

Date 1-3-83

Township WEBSTER

Weather CLEAR

Section 7

Temp. 30°

T5N, R12E

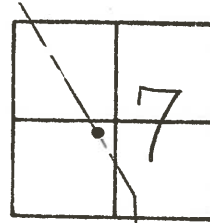
Personnel HOFFMAN

LOHRKE

HOUSEHOLDER

BARNHISEL

#56-B

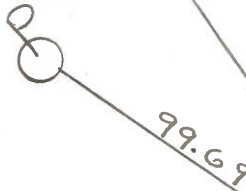


Fd P.K. @ surface
1.1' ht. of ϕ PAUT
7.7' TO W.E.P.
10.3' TO E.E.P.

S.L.M. 992+67

SET P.K. NAIL
6-15-83
J.A.H.

Fd shi
SE/S



PAUT

Fd shi SW/S



Fd "+" TOP
S.E. COR. C.B.



28.19-P



S.R. 199

117.84



RECORD!
P.O.T. STA 572+50
1927 PLAN

County WOOD S.R. 199

Date 6-2-77

Township WEBSTER

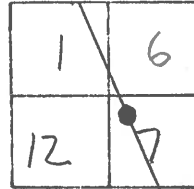
Weather CLOUDY

Section 7

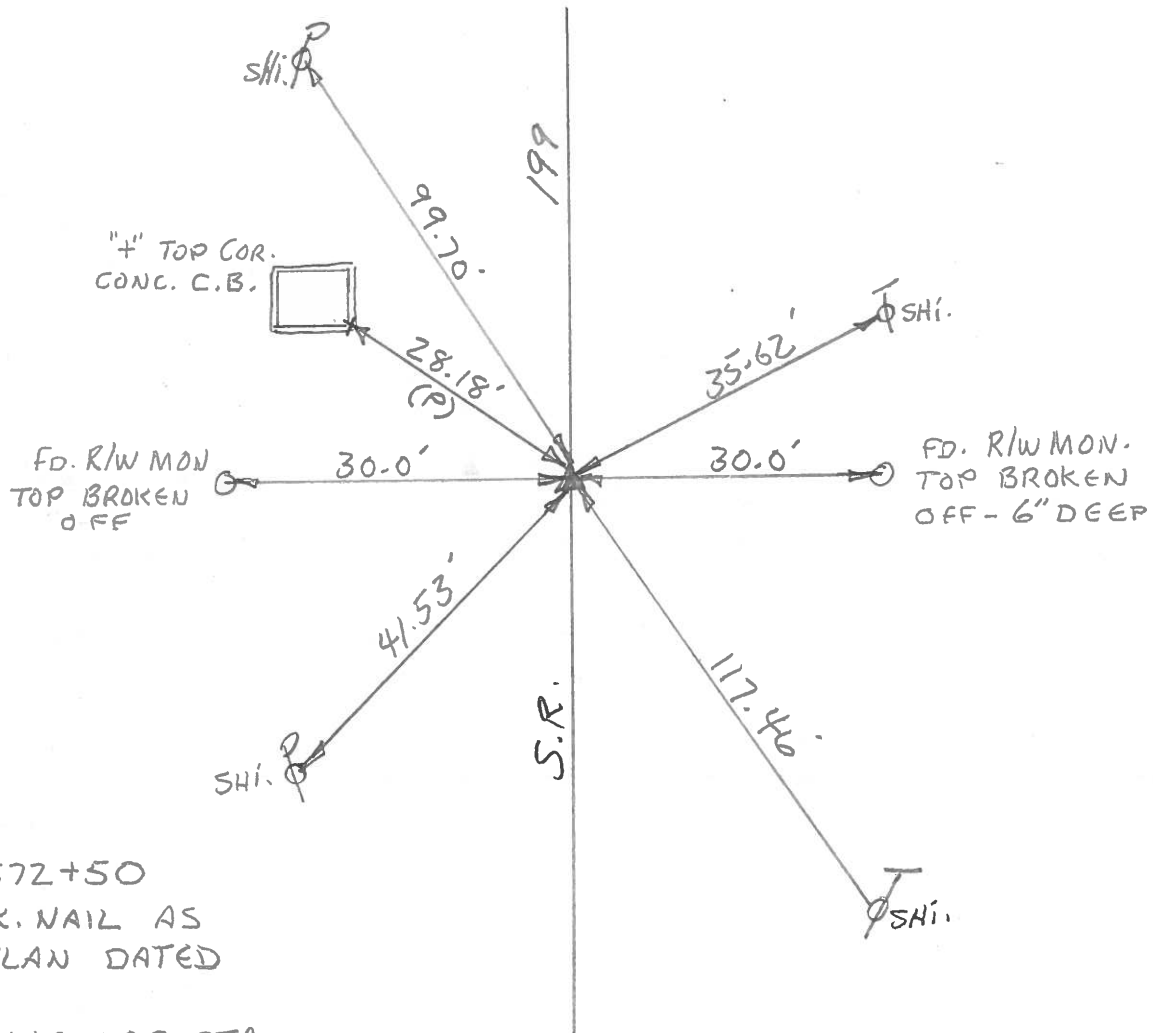
Temp. 60°

T N, R E

Personnel BURNSIDE
SMITH
MEAD



#56-B



P.O.T.
STA. 572+50
FD. P.K. NAIL AS
PER PLAN DATED
1927
1'± WEST OF CTR.
PAVEMENT.

PERSONNEL TITLE PERSONNEL TITLE
 BURNSIDE _____
 SMITH _____
 MEAD _____

COUNTY Wood DATE 6-2-77
 S. R. 199 WEATHER Cloudy
 SEC. _____ TEMP. +60°

DESCRIPTION REF. TO CONTROL PTS. N. OF SCOTCH RIDGE JOB NO. _____
 LEFT CENTER LINE RIGHT

