

O.D.O.T. DISTRICT 2 SURVEY OFFICE (USE ONLY)

PERSONNEL

REFERENCE NO. 56 C

SHEET 20 OF 75

NOTES RHOADES

DATE 6-19-17

ROUTE SR 199

H.C. LEU

WEATHER FAIR

COUNTY WOOD

R.C. CARSON

TEMP. 70°

TOWNSHIP WEBSTER

POORE

DWG BY AUBLE

PID 101221

SECTION 7

T 5 N R 12 E

TYPE MONUMENT MAG/WASHER

ON SURFACE - ~~BELOW~~ ON

OFFSET CL PAVEMENT ON LT : RT

10.4' TO LT EDGE PAVEMENT

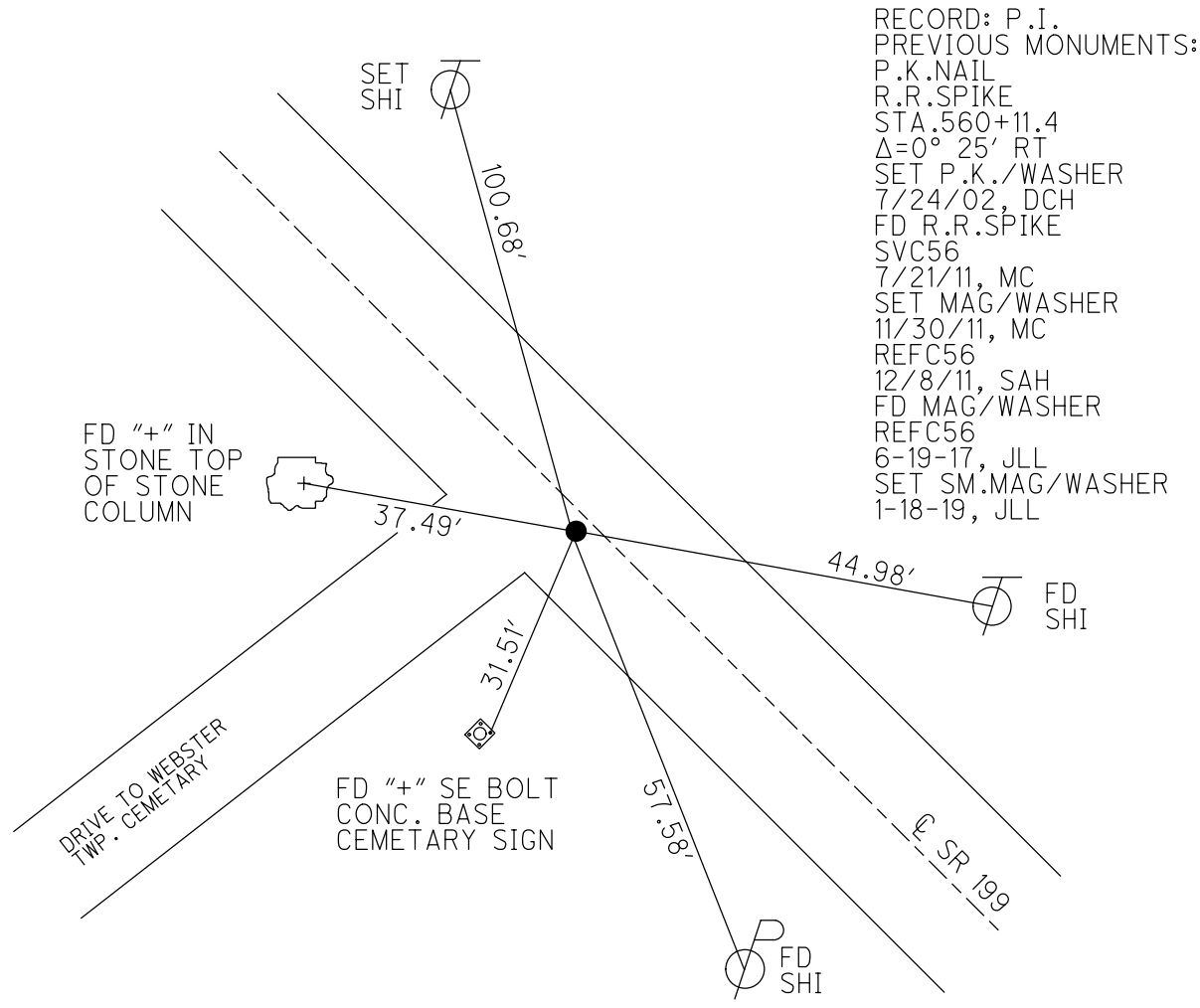
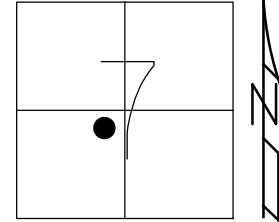
STATION: 1005+27

HORZ.DATUM: NAD83 (2011)

GEOID: 2012A

GRID: NORTHING: 636340.024

EASTING: 1686701.671

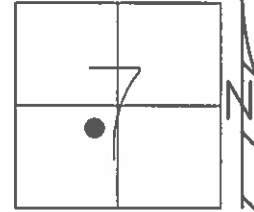


RECORD: P.I.  
PREVIOUS MONUMENTS:  
P.K.NAIL  
R.R.SPIKE  
STA.560+11.4  
 $\Delta=0^{\circ} 25' RT$   
SET P.K./WASHER  
7/24/02, DCH  
FD R.R.SPIKE  
SVC56  
7/21/11, MC  
SET MAG/WASHER  
11/30/11, MC  
REFC56  
12/8/11, SAH  
FD MAG/WASHER  
REFC56  
6-19-17, JLL  
SET SM.MAG/WASHER  
1-18-19, JLL

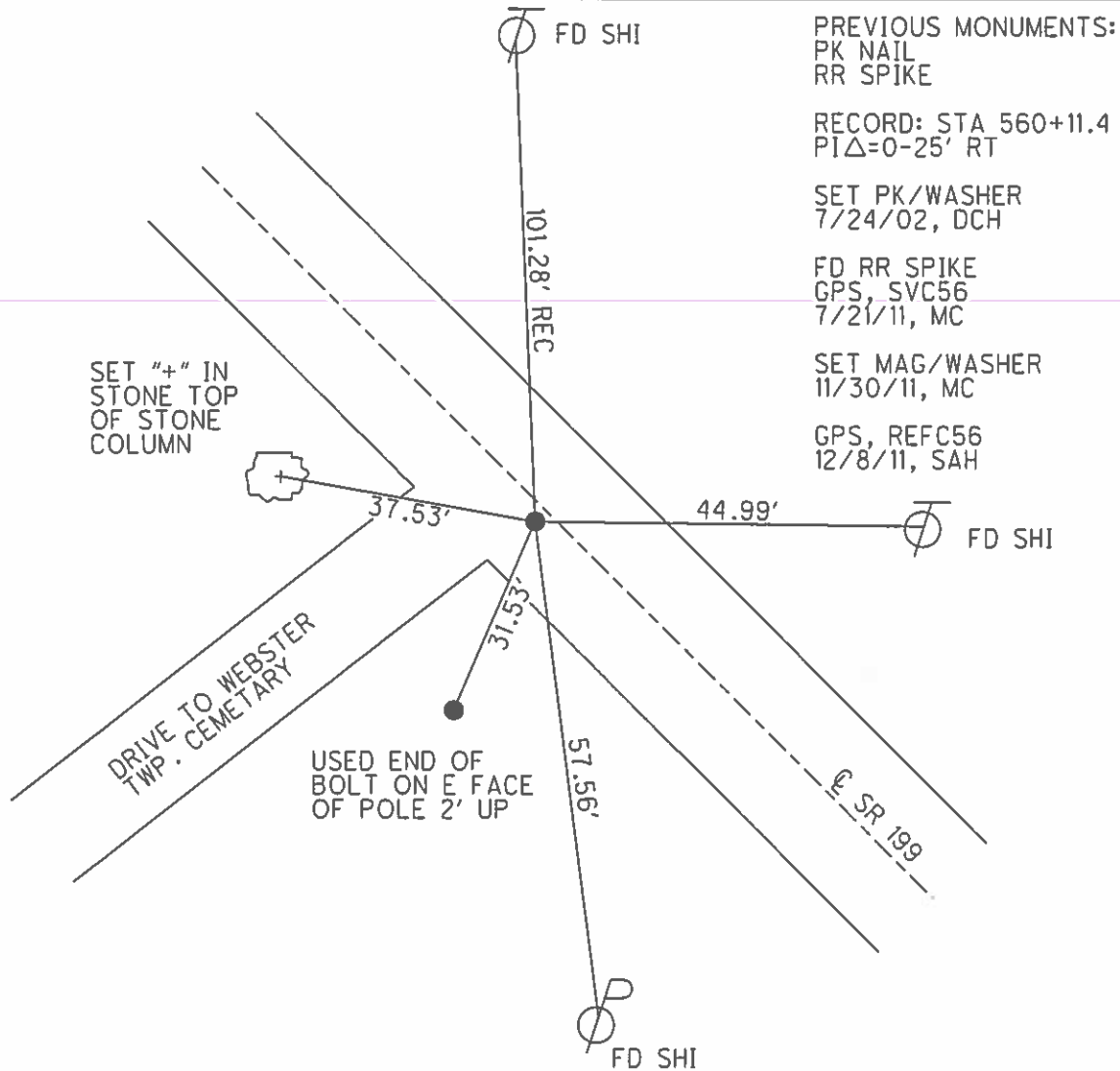
**O.D.O.T. DISTRICT 2 SURVEY OFFICE (USE ONLY)**

PERSONNEL \_\_\_\_\_ REFERENCE NO. 56 C SHEET 20 OF 72  
 NOTES \_\_\_\_\_ FINGER \_\_\_\_\_ DATE 7/21/11 ROUTE SR 199  
 H.C. \_\_\_\_\_ HUSS \_\_\_\_\_ WEATHER SUNNY COUNTY WOOD  
 R.C. \_\_\_\_\_ CANTERBURY \_\_\_\_\_ TEMP. 87° TOWNSHIP WEBSTER  
 \_\_\_\_\_ SECTION 7  
 \_\_\_\_\_ T 5 N R 12 E

TYPE MONUMENT \_\_\_\_\_ PK NAIL/WASHER  
~~ON SURFACE~~ - BELOW \_\_\_\_\_ 0.2'  
~~LEFT~~ - Q PAV'T - ~~RIGHT~~ \_\_\_\_\_ ON  
 \_\_\_\_\_ 10.4' TO LT. EDGE PAVEMENT  
 S.L.M. \_\_\_\_\_ 1005+27



GRID: NORTHING: 636340.080 EASTING: 1686701.595



O.D.O.T. DISTRICT 2 SURVEY OFFICE

PERSONNEL

REFERENCE NO. 56C

SHEET 5 OF 45

NOTES ROUSOS

DATE 4-2-02

ROUTE 199

H.C. HOMAN

WEATHER CLOUDY

COUNTY WOOD

R.C. ROUSOS

TEMP. 60

TOWNSHIP WEBSTER

SECTION 7

T 5 N R 12 E

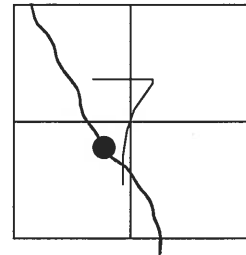
TYPE MONUMENT PK NAIL & WASHER

ON SURFACE - ~~BELOW~~ YES

LEFT - Q PAV'T - ~~RIGHT~~ .5'

8' TO LT EDGE PAVEMENT

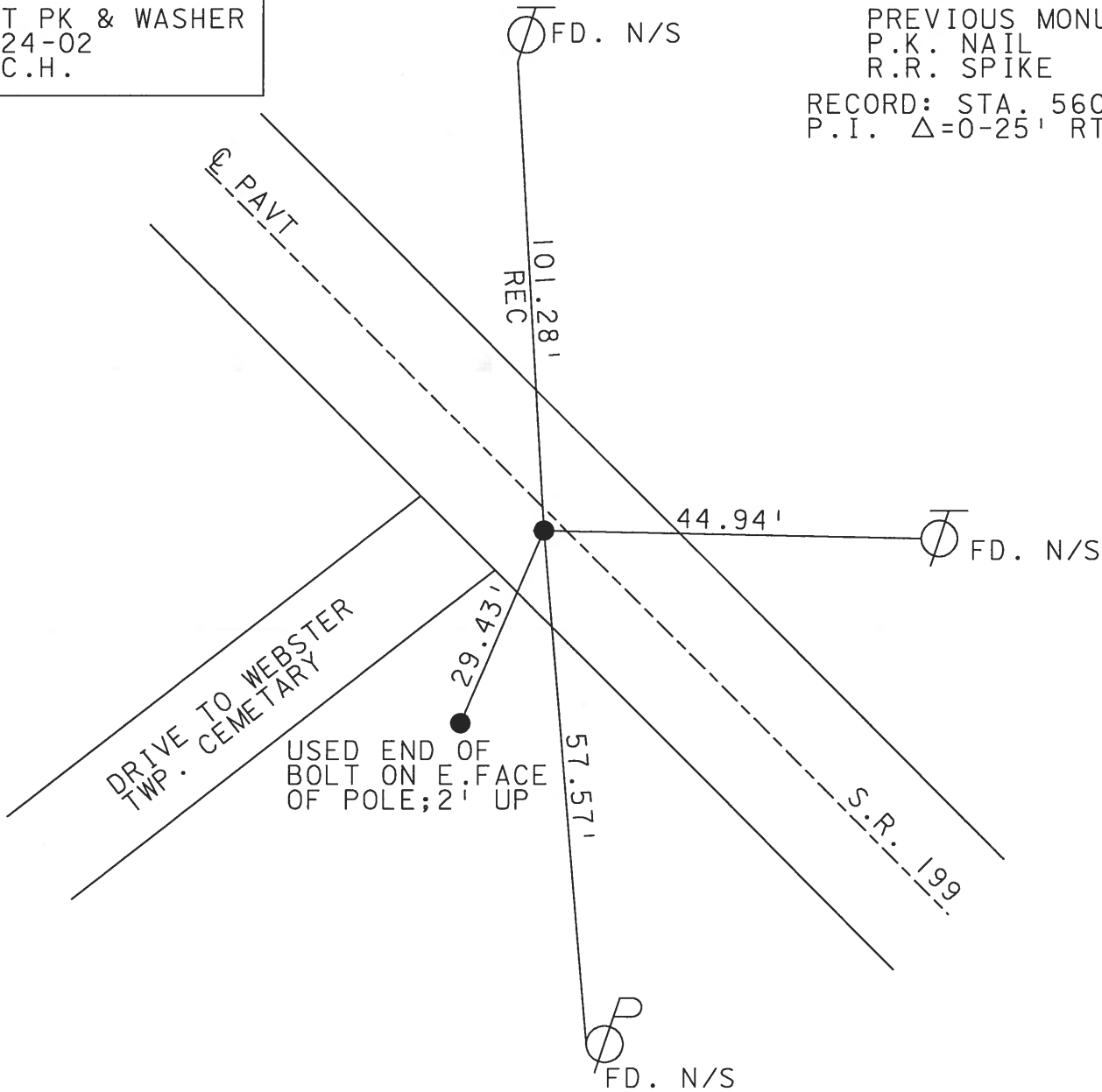
S.L.M. 1005+27



SET PK & WASHER  
7-24-02  
D.C.H.

PREVIOUS MONUMENTS:  
P.K. NAIL  
R.R. SPIKE

RECORD: STA. 560+11.4  
P.I. Δ=0-25' RT.



O.D.O.T. DISTRICT 2 SURVEY OFFICE

PERSONNEL

REFERENCE NO. 56-C

SHEET 5 OF 26

NOTES CHENEY

H.C. BARBOUR

DATE 10-4-1991

ROUTE 199

R.C. GEYMAN

WEATHER SUNNY

COUNTY WOOD

TEMP. 75°

TOWNSHIP WEBSTER

SECTION 7

T5N R12E

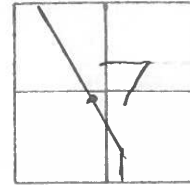
TYPE MONUMENT SET PK/WASHER

ON SURFACE - BELOW

LEFT- & PAV'T. - RIGHT 0.5'

8' TO W. EDGE PAVEMENT

S.L.M. 1003+50



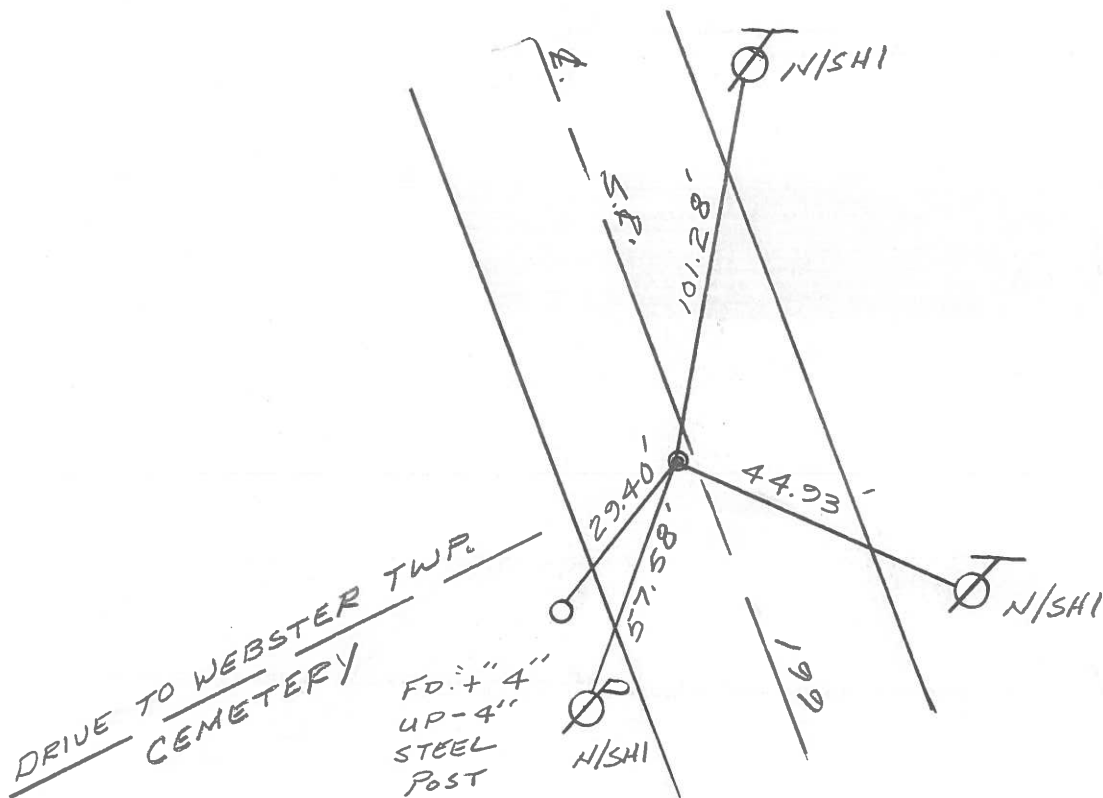
PREVIOUS MONUMENTS:

P.K.

R.R. SPK.

RECORD: STA. 560+11.4

P.I. Δ = 0°-25' RT.



Q.D.O.T. DISTRICT 2 SURVEY OFFICE

SHEET \_\_\_\_\_ OF \_\_\_\_\_

County WOOD S.R. 199

Township WEBSTER

Section 7

T5N, R12E

Personnel HOFFMAN

LOEHRLE

HOUSEHOLDER

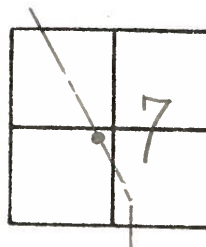
BARNHISEL

#56-C

Date 1-3-83

Weather CLEAR

Temp. +30°



Fd R.R. SPK @ SURFACE

0.5' AT & PAUT

8.2' TO W.E.P.

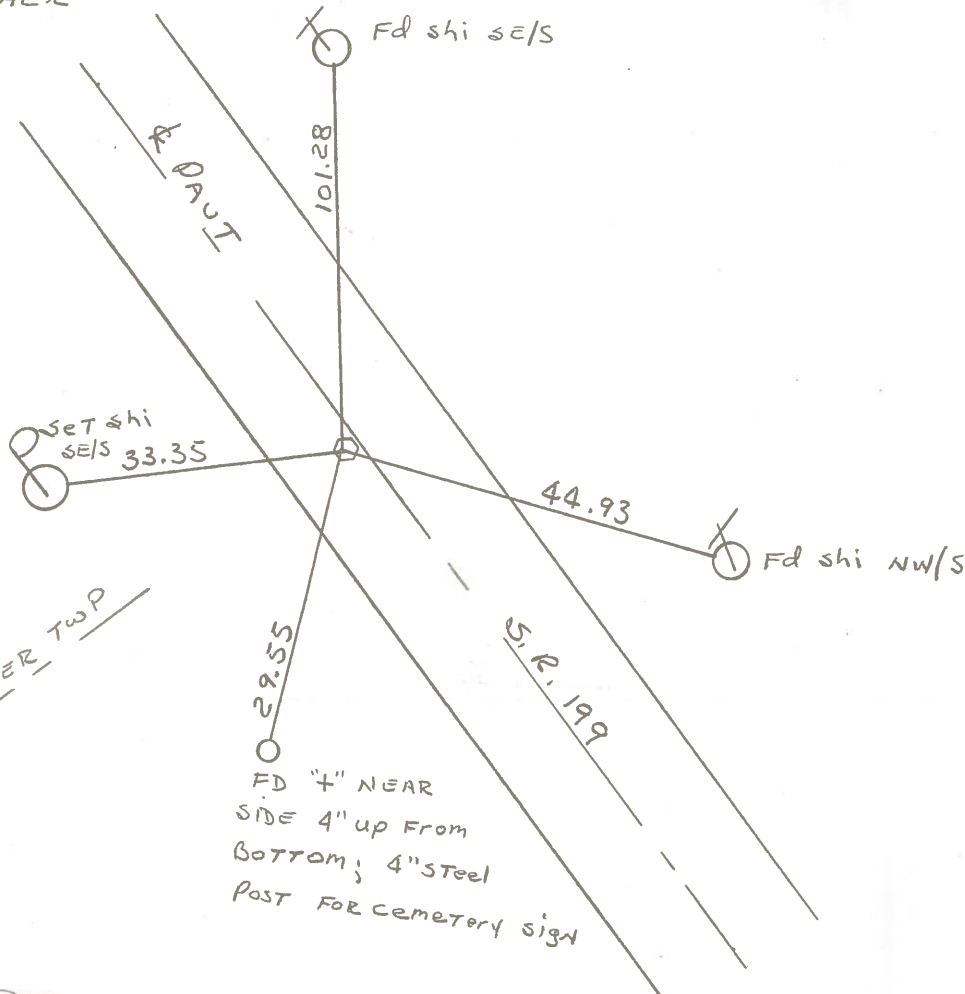
9.7' TO E.E.P.

S.L.M. 1005+05

SET P.K./WASHER

6-15-83

J.A.H.



DRIVE TO WEBSTER TWP  
CEMETERY

FD "4" NEAR  
SIDE 4" UP FROM  
BOTTOM; 4" STEEL  
POST FOR CEMETERY SIGN

RECORD!

P.I. STA 560+11.4

$\Delta = 0^\circ - 25' RT.$

County WOOD S.R. 199

Township WEBSTER

Section 7

T N, R E

Personnel BURNSIDE

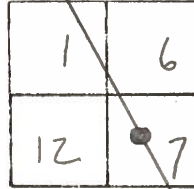
SMITH

MEAD

Date 6-277

Weather CLOUDY

Temp. 60°



~~56A~~ **56C**

"+" IN NEAR  
EDGE OF MORTAR  
STONE POST



37.07'

199

101.25'



DRIVE TO CEMETERY

30.00'

FD. R/W MON.  
6" BELOW SURFACE  
TOP BROKEN OFF

29.55'

44.91'

"+" IN NEAR  
EDGE 4" PIPE  
POST FOR  
WEBSTER TWP.  
CEMETERY SIGN



S.R.



P.I. STA. 560+11.4

$\Delta = 0^{\circ}-25'$  RT.

SET R.I.R. SPK.

ON PRORATED

DIST. N & S TO

PREVIOUS EST. CONTROL.

PTS. & 30.00 TO R/W MON.

PERSONNEL TITLE PERSONNEL TITLE  
 BURNSIDE  
 SMITH  
 MEAD

COUNTY Wood DATE 6-2-77  
 S. R. 199 WEATHER Cloudy  
 SEC. TEMP. +60°

DESCRIPTION REF. TO CONTROL PTS. N. OF SCOTCH RIDGE JOB NO.  
 LEFT CENTER LINE RIGHT

