

O.D.O.T. DISTRICT 2 SURVEY OFFICE (USE ONLY)

PERSONNEL

REFERENCE NO. 57

SHEET 21 OF 75

NOTES RHOADES
 H.C. LEU
 R.C. CARSON
POORE

DATE 6-19-17
 WEATHER FAIR
 TEMP. 70°

ROUTE SR 199
 COUNTY WOOD
 TOWNSHIP WEBSTER
 SECTION 7

DWG BY AUBLE PID 101221

T 5 N R 12 E

TYPE MONUMENT MAG/WASHER

ON SURFACE - ~~BELOW~~ ON

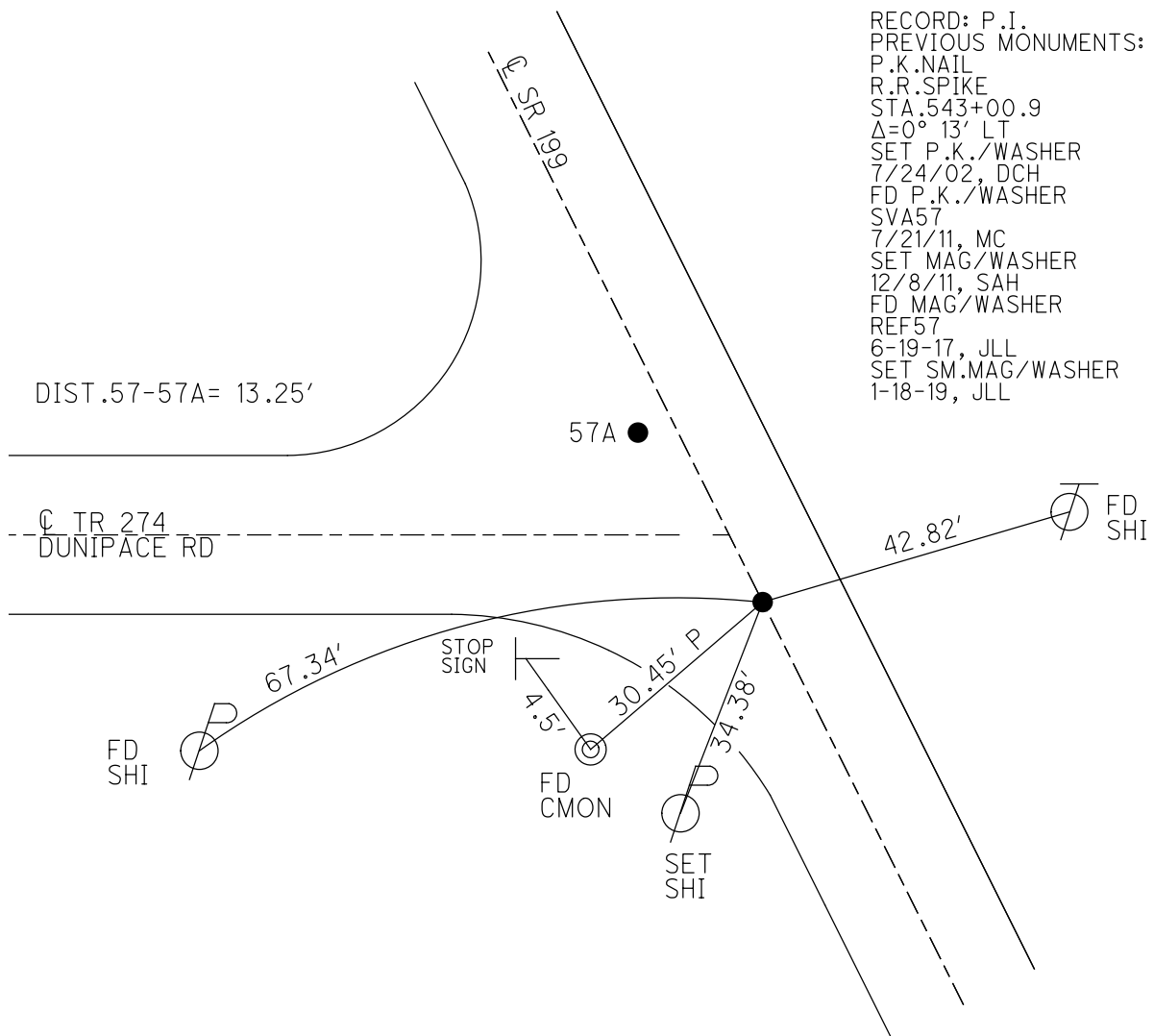
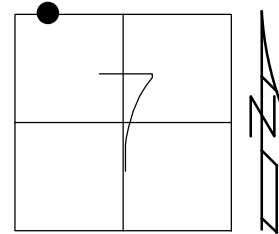
OFFSET 0.7' ~~±~~ : RT

9.9' TO RT EDGE PAVEMENT

STATION: 1022+37

HORZ. DATUM: NAD83 (2011) GEOID: 2012A

GRID: NORTHING: 637864.947 EASTING: 1685929.029

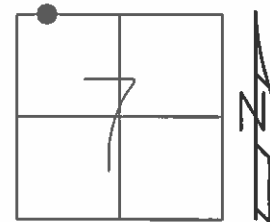


RECORD: P.I.
 PREVIOUS MONUMENTS:
 P.K.NAIL
 R.R.SPIKE
 STA.543+00.9
 $\Delta=0^{\circ} 13' LT$
 SET P.K./WASHER
 7/24/02, DCH
 FD P.K./WASHER
 SVA57
 7/21/11, MC
 SET MAG/WASHER
 12/8/11, SAH
 FD MAG/WASHER
 REF57
 6-19-17, JLL
 SET SM.MAG/WASHER
 1-18-19, JLL

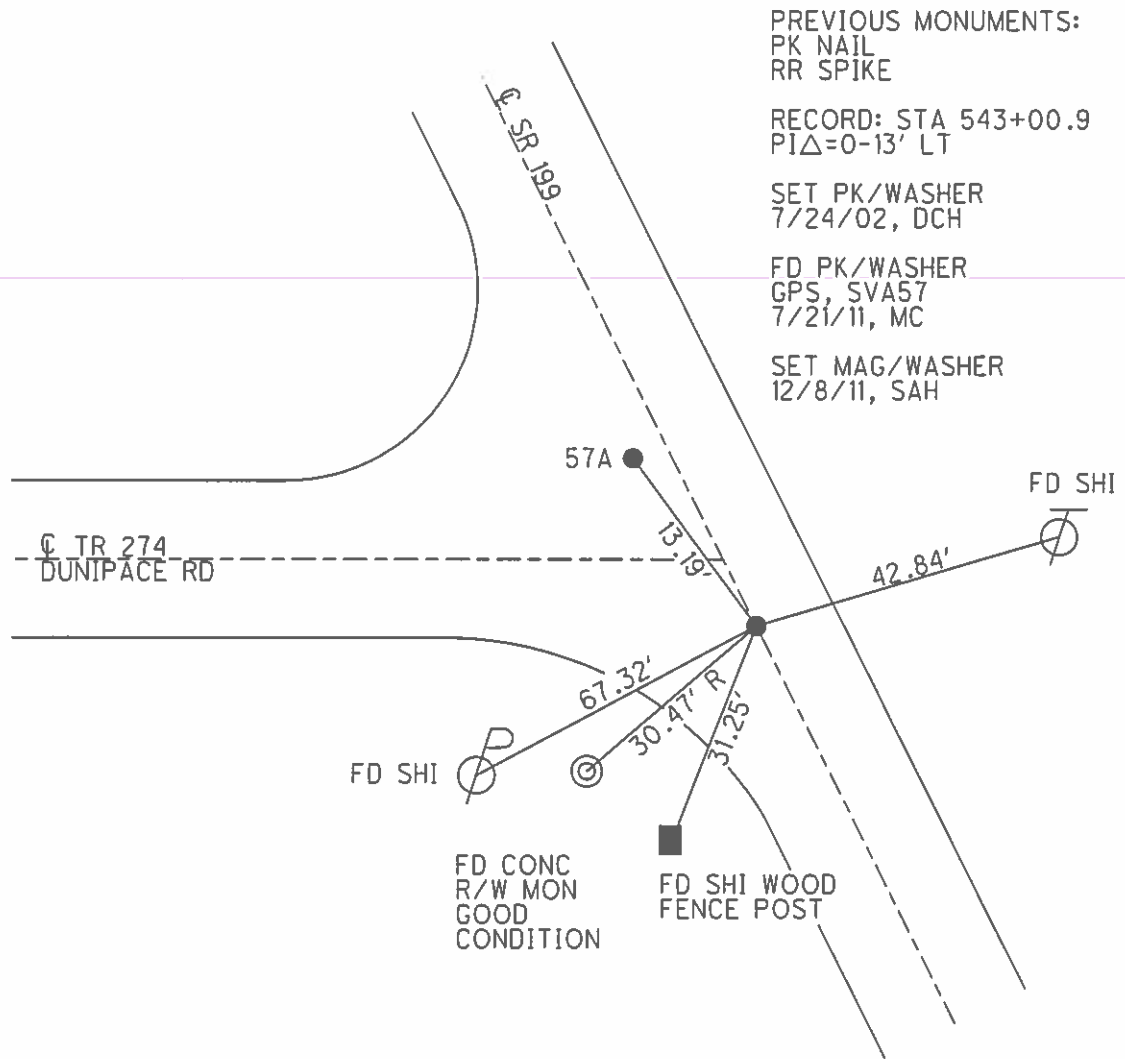
O.D.O.T. DISTRICT 2 SURVEY OFFICE (USE ONLY)

PERSONNEL _____ REFERENCE NO. 57 SHEET 21 OF 72
 NOTES _____ FINGER _____ DATE 7/21/11 ROUTE SR 199
 H.C. _____ HUSS _____ WEATHER SUNNY COUNTY WOOD
 R.C. _____ CANTERBURY _____ TEMP. 87° TOWNSHIP WEBSTER
 _____ SECTION 7
 T 5 N R 12 E

TYPE MONUMENT _____ PK/WASHER _____
 ON SURFACE - ~~BELOW~~ _____ ON _____
~~LEFT - C PAVT~~ - RIGHT 0.7'
9.9' TO RT EDGE PAVEMENT
 S.L.M. _____ 1022+37



GRID: NORTHING: 637865.019 EASTING: 1685928.977



O.D.O.T. DISTRICT 2 SURVEY OFFICE

PERSONNEL

REFERENCE NO. 57

SHEET 6 OF 45

NOTES ROUSOS

DATE 4-2-02

ROUTE 199

H.C. HOMAN

WEATHER CLOUDY

COUNTY WOOD

R.C. ROUSOS

TEMP. 60

TOWNSHIP WEBSTER

SECTION 7

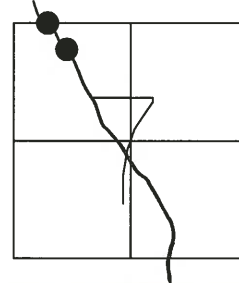
T 5 N R 12 E

TYPE MONUMENT PK NAIL & WASHER

ON SURFACE - ~~BELOW~~ YES

LEFT - ☉ PAV'T - ~~RIGHT~~ PT "A" ON ☉
11' TO RT EDGE PAVEMENT PT "B" 1.5' LT.

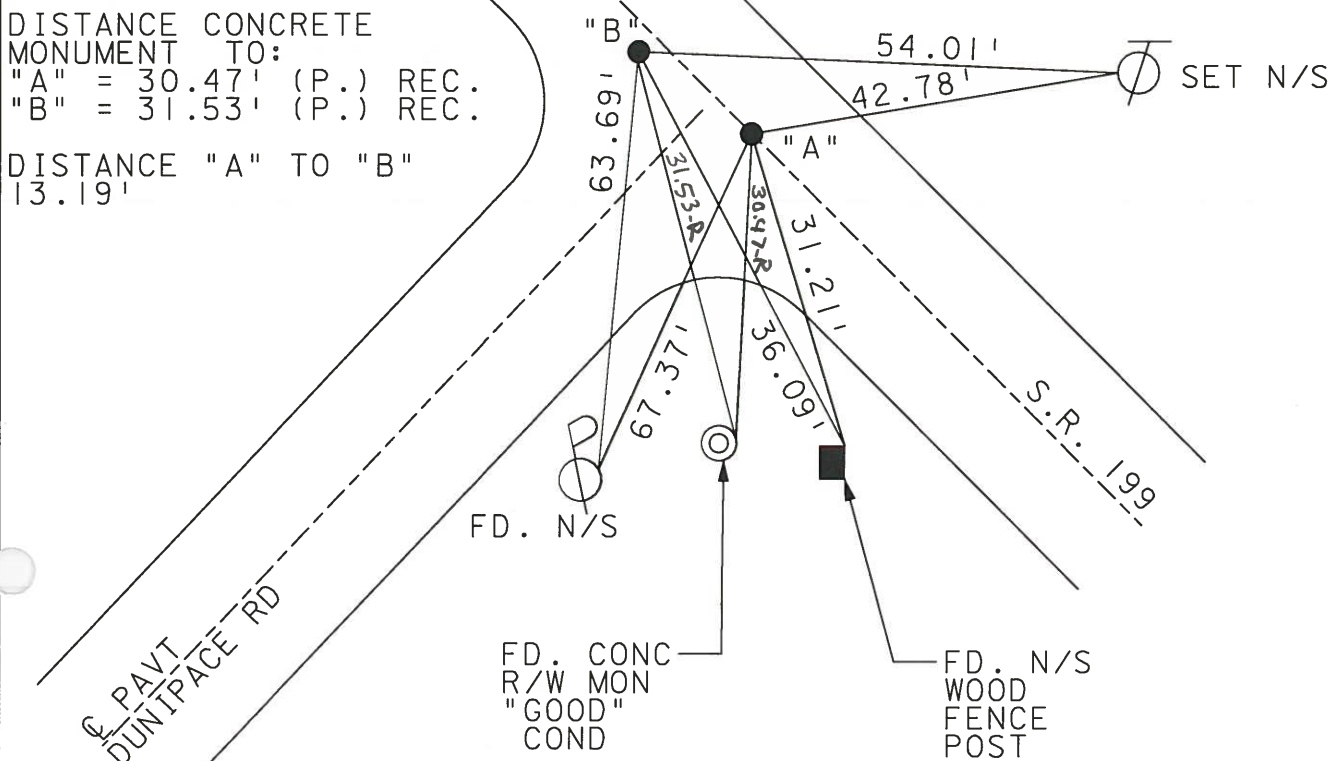
S.L.M. 1022+37



SET PK & WASHER
 7-24-02
 D.C.H.

57	"A"	PREVIOUS MONUMENTS: P.K. NAIL R.R. SPIKE
	RECORD: STA. 543+00.9 P.I. Δ=0-13' LT.	
57A	"B"	PREVIOUS MONUMENTS: P.K. & WASHER P.K.

DISTANCE CONCRETE
 MONUMENT TO:
 "A" = 30.47' (P.) REC.
 "B" = 31.53' (P.) REC.
 DISTANCE "A" TO "B"
 13.19'



O.D.O.T. DISTRICT 2 SURVEY OFFICE

PERSONNEL

REFERENCE NO. 57

SHEET 6 OF 26

NOTES CHENEY

H.C. BARBOUR

R.C. GEYMAN

DATE 11-15-1991

WEATHER CLOUDY

TEMP. 50° F

ROUTE 199

COUNTY WOOD

TOWNSHIP WEBSTER

SECTION 7

T5N R12E

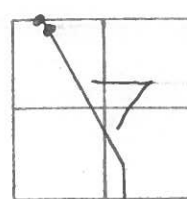
TYPE MONUMENT SET PK'S/WASHERS

ON SURFACE - BELOW

LEFT- & PAV'T. - RIGHT PT. "A" 0.1' LT.

"A" 9.5' TO E EDGE PAVEMENT

S.L.M. 1020 + 60



PT. "A" 57

PREVIOUS MONUMENTS:

PK/WASHER

R.R. SPK.

RECORD STA. 543+00.9

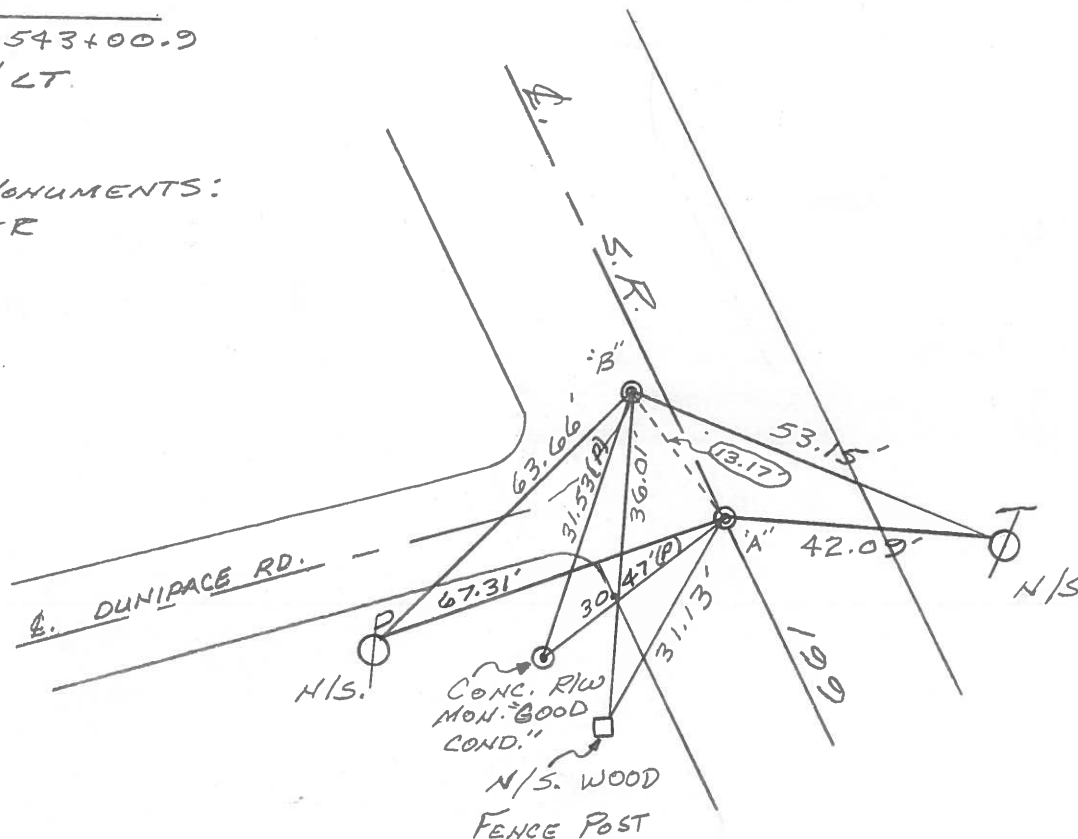
P.I. Δ = 0°-13' LT.

PT. "B" 57A

PREVIOUS MONUMENTS:

P.K./WASHER

P.K.



QD.O.T. DISTRICT 2 SURVEY OFFICE

SHEET _____ OF _____

County WOOD S.R. 199

Township WEBSTER

Section 7

T5N, R12E

Personnel HOFFMAN

LOEHRKE

HOUSEHOLDER

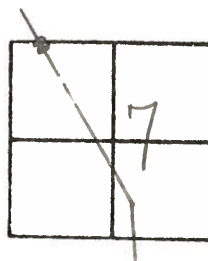
BARNHISEL

#57

Date 1-3-83

Weather CLEAR

Temp. +30°



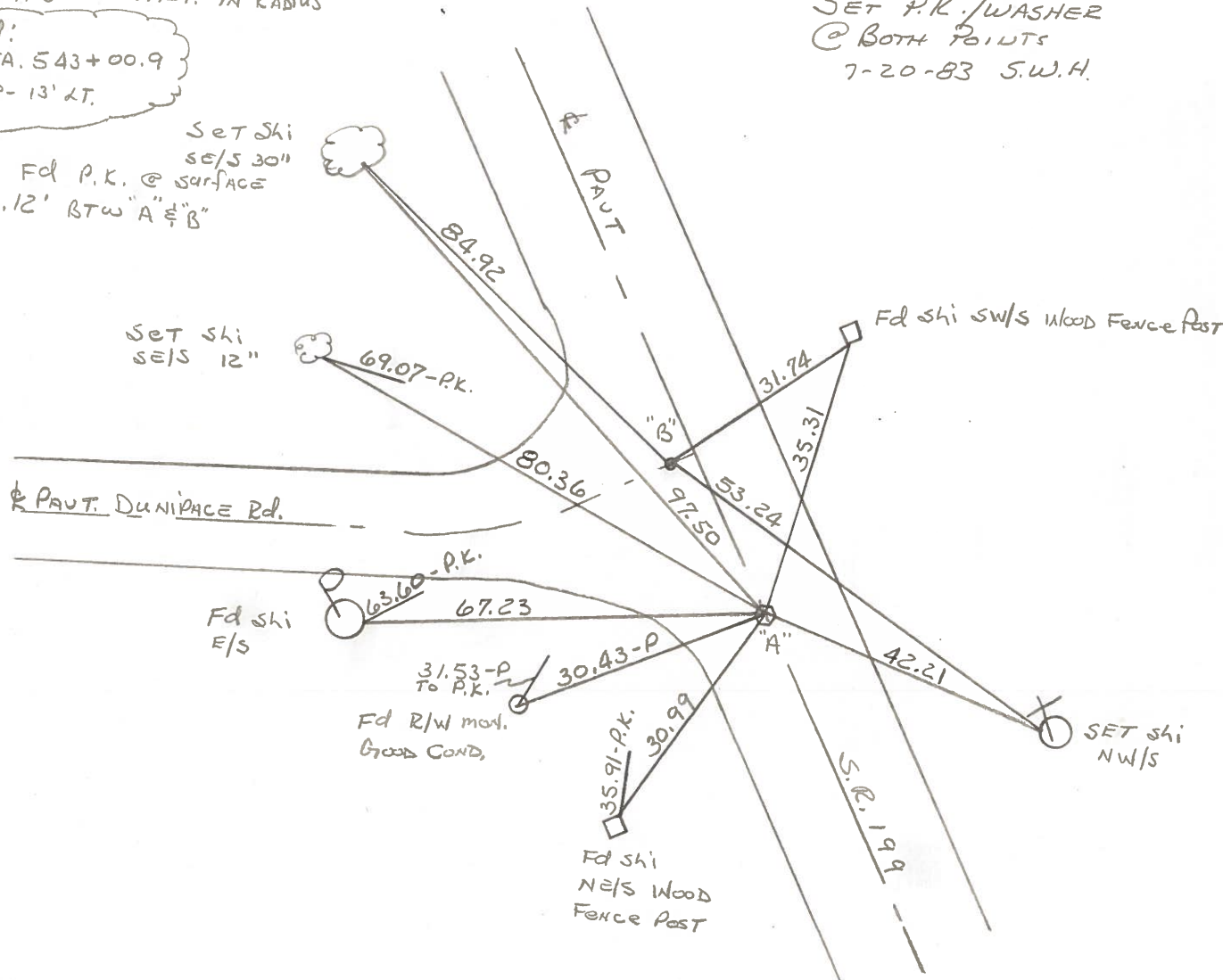
57 PT. "A" Fd R.P. SPK @ SURFACE
ON & PAUT SR 199
9.4' TO EEP
21.5' TO W.E.P. IN RADIUS

S.L.M. 1022 + 16

Record:
P.I. STA. 543 + 00.9
 $\Delta = 0^\circ - 13' LT.$

SET P.K./WASHER
@ BOTH POINTS
7-20-83 S.W.H.

57A PT. "B" Fd P.K. @ SURFACE
13.12' BTW "A" & "B"



County WOOD S.R. 199

Date 6-2-77

Township WEBSTER

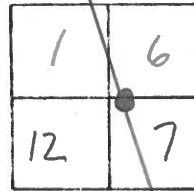
Weather CLOUDY

Section 7

Temp. 60°

T N, R E

Personnel BURNSIDE



#57

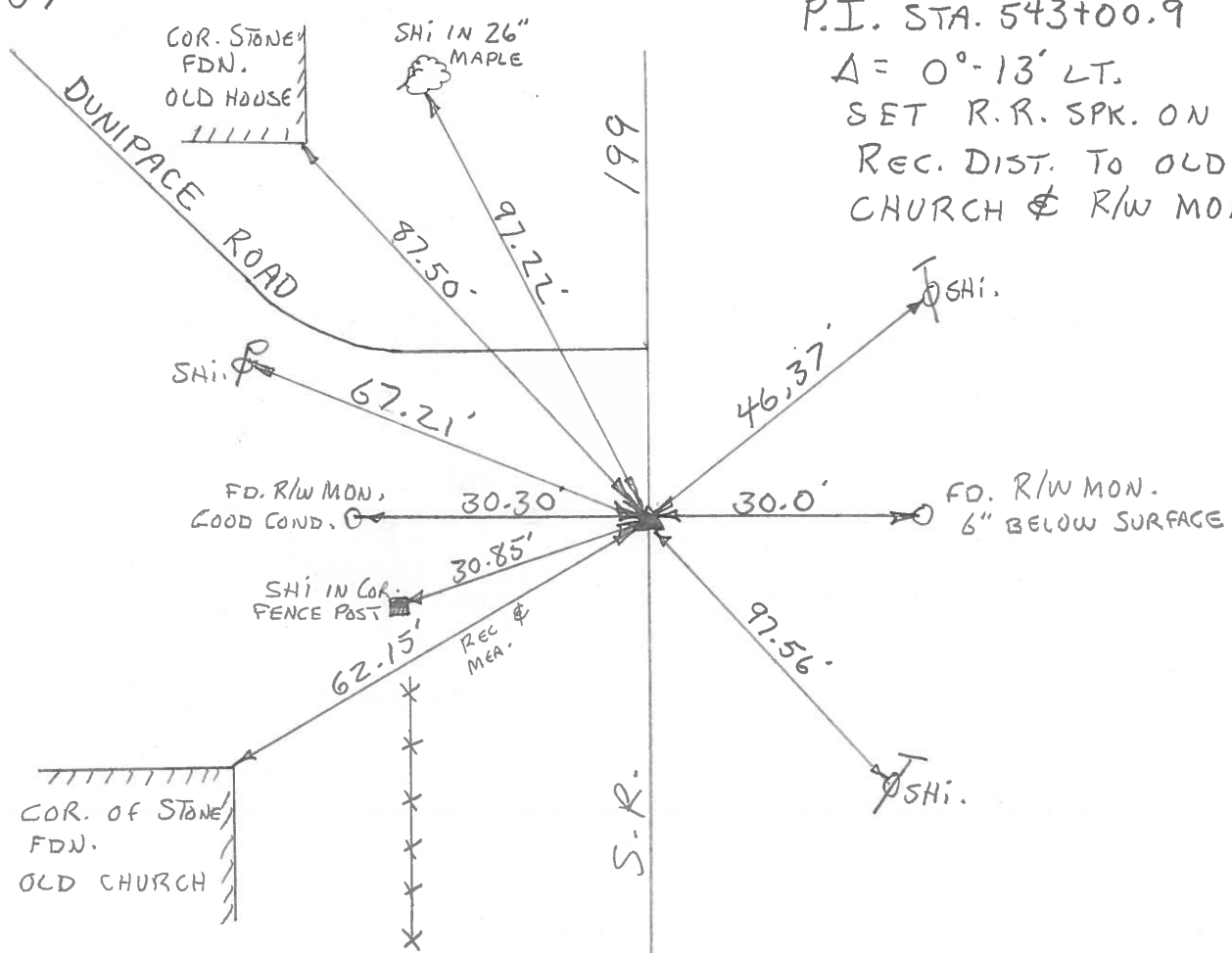
P.I. STA. 543+00.9

$\Delta = 0^\circ - 13' \text{ LT.}$

SET R.R. SPK. ON

REC. DIST. TO OLD

CHURCH & R/W MONS.



PERSONNEL	TITLE	PERSONNEL	TITLE
BURNSIDE			
SMITH			
MEAD			

COUNTY Wood DATE 6-2-77

S. R. 199 WEATHER Cloudy

SEC. _____ TEMP. 76°

DESCRIPTION REF. TO CONTROL PTS. N. OF SCOTCH RIDGE JOB NO. _____

LEFT CENTER LINE RIGHT

