

O.D.O.T. DISTRICT 2 SURVEY OFFICE (USE ONLY)

PERSONNEL

REFERENCE NO. 57 A

SHEET 22 OF 75

NOTES RHOADES

DATE 6-19-17

ROUTE SR 199

H.C. LEU

WEATHER FAIR

COUNTY WOOD

R.C. CARSON

TEMP. 70°

TOWNSHIP WEBSTER

POORE

DWG BY AUBLE

PID 101221

SECTION 7

T 5 N R 12 E

TYPE MONUMENT MAG/WASHER

ON SURFACE - ~~BELOW~~ ON

OFFSET 0.8' LT : ~~RT~~

10.9' TO LT EDGE PAVEMENT

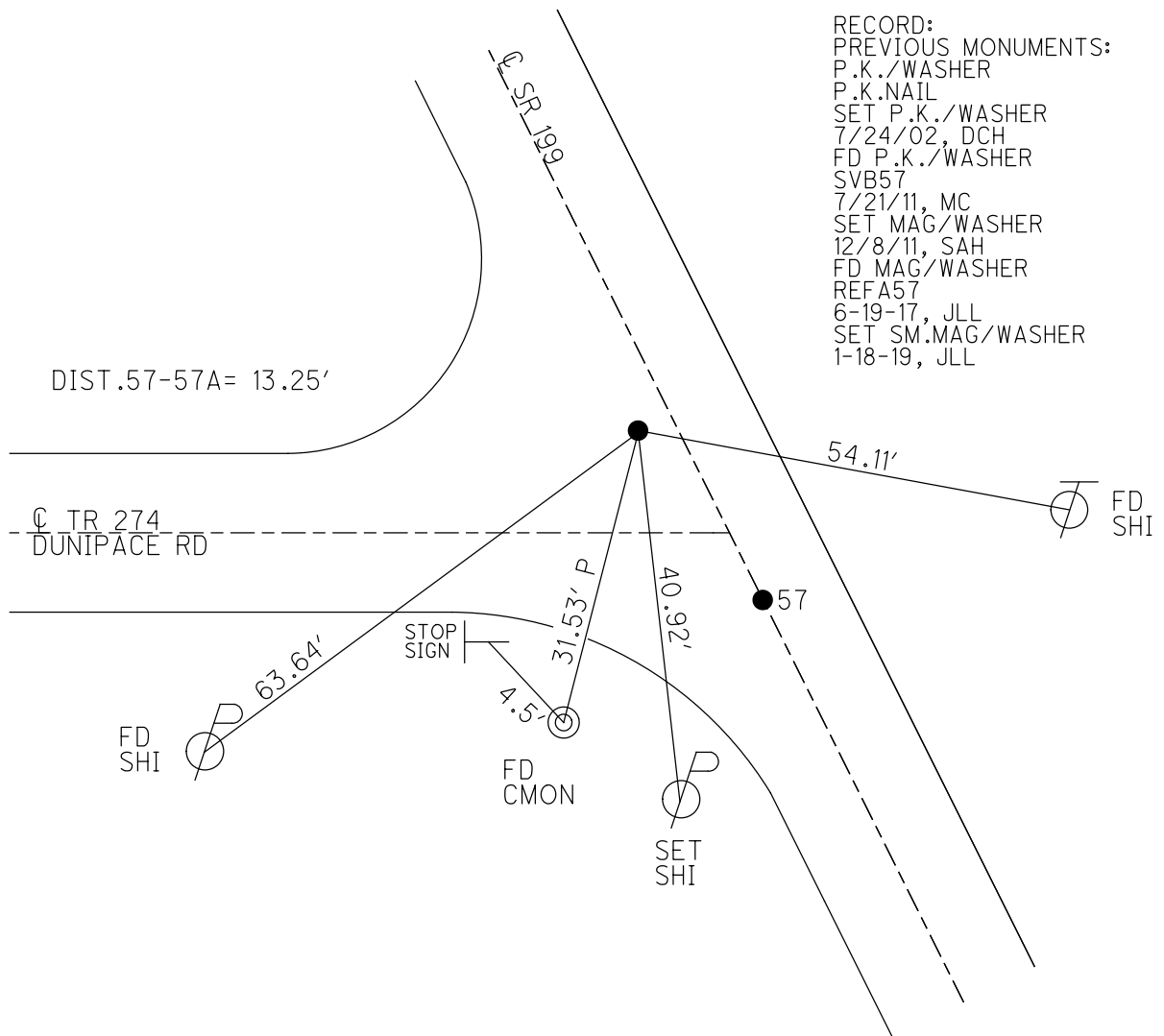
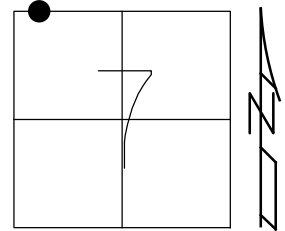
STATION: 1022+37

HORIZ.DATUM: NAD83 (2011)

GEOID: 2012A

GRID: NORTHING: 637876.056

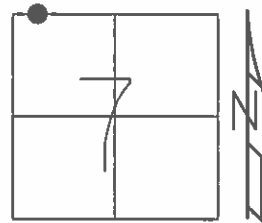
EASTING: 1685921.842



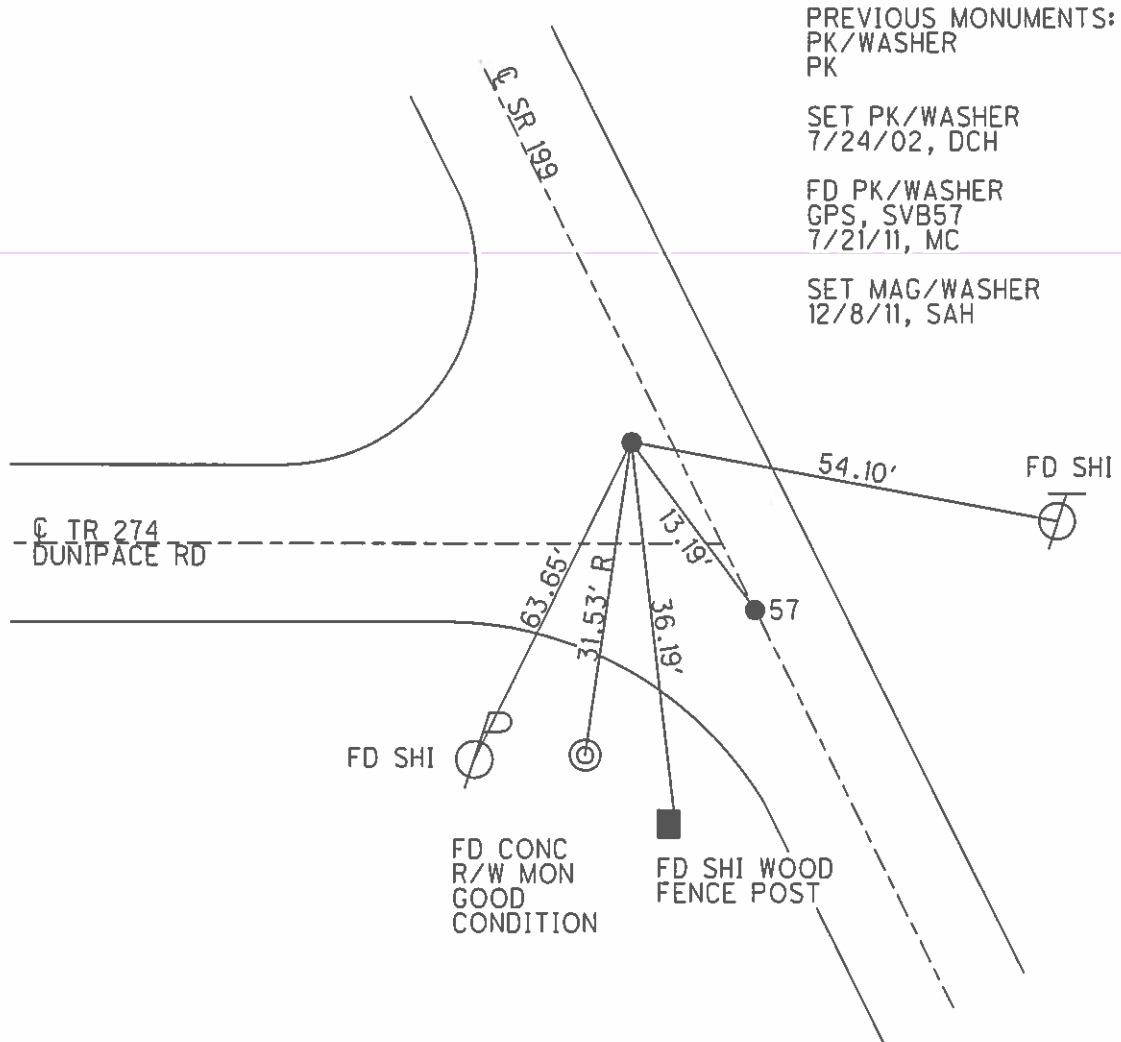
O.D.O.T. DISTRICT 2 SURVEY OFFICE (USE ONLY)

PERSONNEL _____ REFERENCE NO. 57 A SHEET 22 OF 72
 NOTES FINGER DATE 7/21/11 ROUTE SR 199
 H.C. HUSS WEATHER SUNNY COUNTY WOOD
 R.C. CANTERBURY TEMP. 87° TOWNSHIP WEBSTER
 SECTION 7
T 5 N R 12 E

TYPE MONUMENT PK/WASHER
 ON SURFACE - ~~BELOW~~ ON
 LEFT - ~~C PAV'T~~ - ~~RIGHT~~ 0.8'
10.9' TO LT EDGE PAVEMENT
 S.L.M. 1022+37



GRID: NORTHING: 637876.115 EASTING: 1685921.761



O.D.O.T. DISTRICT 2 SURVEY OFFICE

PERSONNEL

REFERENCE NO. 57

SHEET 6 OF 45

NOTES ROUSOS

DATE 4-2-02

ROUTE 199

H.C. HOMAN

WEATHER CLOUDY

COUNTY WOOD

R.C. ROUSOS

TEMP. 60

TOWNSHIP WEBSTER

SECTION 7

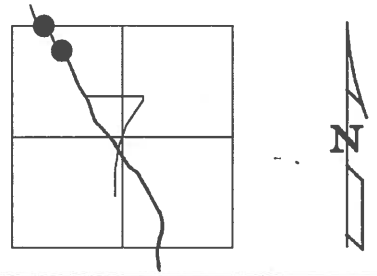
T 5 N R 12 E

TYPE MONUMENT PK NAIL & WASHER

ON SURFACE - ~~BELOW~~ YES

LEFT - Q PAVT - ~~RIGHT~~ PT "A" ON Q
11' TO RT EDGE PAVEMENT PT "B" 1.5' LT.

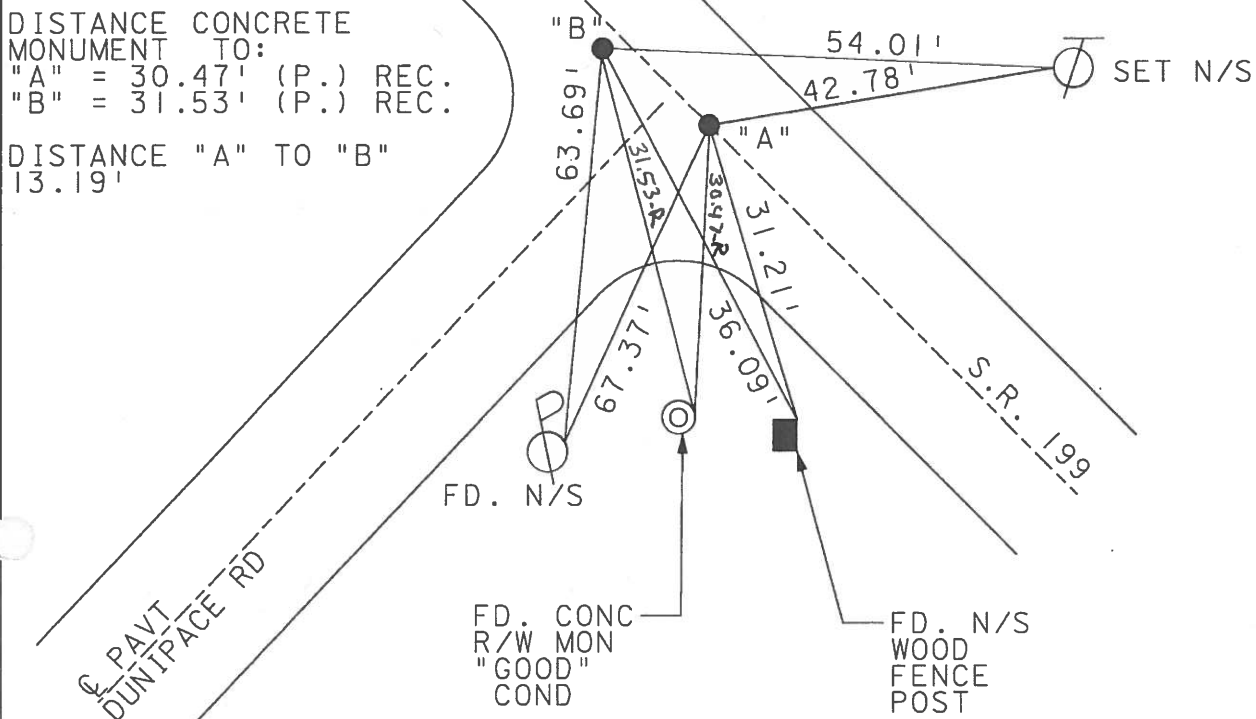
S.L.M. 1022+37



SET PK & WASHER
 7-24-02
 D.C.H.

57	"A"	PREVIOUS MONUMENTS: P.K. NAIL R.R. SPIKE
		RECORD: STA. 543+00.9 P.I. Δ=0-13' LT.
57A	"B"	PREVIOUS MONUMENTS: P.K. & WASHER P.K.

DISTANCE CONCRETE MONUMENT TO:
 "A" = 30.47' (P.) REC.
 "B" = 31.53' (P.) REC.
 DISTANCE "A" TO "B"
 13.19'



O.D.O.T. DISTRICT 2 SURVEY OFFICE

PERSONNEL

REFERENCE NO. 57

SHEET 6 OF 26

NOTES CHENEY

H.C. BARBOUR

DATE 11-15-1991

ROUTE 199

R.C. GEYMAN

WEATHER CLOUDY

COUNTY WOOD

TEMP. 50° F

TOWNSHIP WEBSTER

SECTION 7

T5N R12E

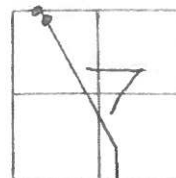
TYPE MONUMENT SET PK'S/WASHERS

ON SURFACE - BELOW

LEFT- & PAV'T. - RIGHT PT. A" 0 H.E.

^{18" 11'} A" 3.5' TO E EDGE PAVEMENT PT. B" 1.5' LT.

S.L.M. 1020 + 60



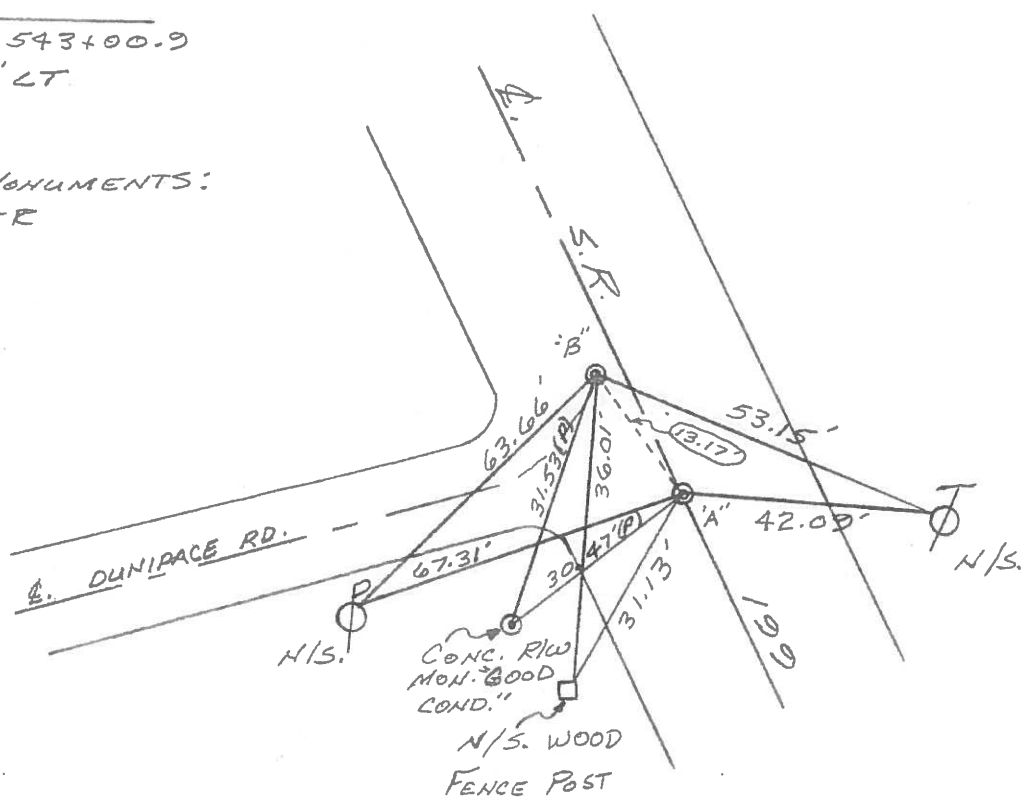
PT. A" 57

PREVIOUS MONUMENTS:
PK/WASHER
RR SPK.

RECORD STA 543+00.9
P.I. Δ = 0°-13' LT.

PT. B" 57A

PREVIOUS MONUMENTS:
PK/WASHER
PK.



Q.D.O.T. DISTRICT 2 SURVEY OFFICE

SHEET _____ OF _____

County WOOD S.R. 199

Date 1-3-83

Township WEBSTER

Weather CLEAR

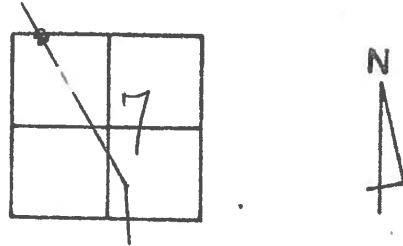
Section 7

Temp. +30°

TEN, RICE

Personnel HOFFMAN
LOEHRKE
HOUSEHOLDER
BARNHISEL

#57



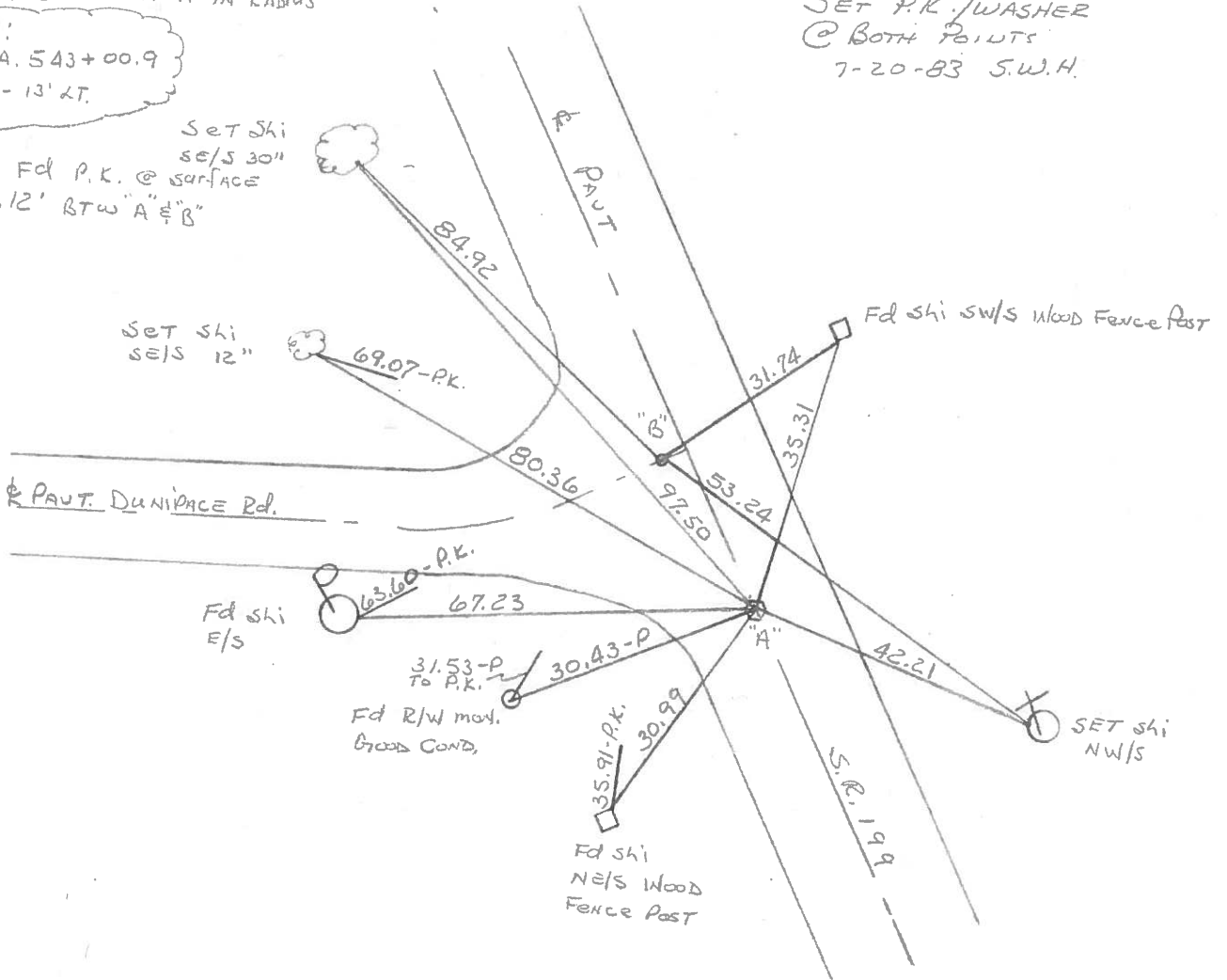
57 Pt. "A" Fd R.P. spk @ surface
 ON & PAUT SR 199
 9.4' TO EEP
 21.5' TO W.E.P. IN RADIUS

S.L.M. 1022 + 16

Record!
 P.I. STA. 543+00.9
 Δ = 0°-13' LT.

SET P.K./WASHER
 @ BOTH POINTS
 7-20-83 S.W.H.

57A Pt. "B" Fd P.K. @ surface
 13.12' BTW "A" & "B"



Set shi
 se/s 12"

Fd shi SW/S WOOD FENCE POST

& PAUT. DUNIPACE Rd.

Fd shi
 E/S

31.53-P
 TO P.K.
 Fd R/W max.
 GOOD COND.

Fd shi
 NE/S WOOD
 FENCE POST

SET shi
 NW/S