

O.D.O.T. DISTRICT 2 SURVEY OFFICE (USE ONLY)

PERSONNEL

REFERENCE NO. 58

SHEET 23 OF 75

NOTES RHOADES

DATE 6-19-17

ROUTE SR 199

H.C. LEU

WEATHER FAIR

COUNTY WOOD

R.C. CARSON  
POORE

TEMP. 70°

TOWNSHIP WEBSTER

DWG BY AUBLE PID 101221

SECTION 1

T 5 N R 11 E

TYPE MONUMENT MAG/WASHER

ON SURFACE - ~~BELOW~~ ON

OFFSET Q PAVEMENT 2.5' ~~±~~ : RT

7.9' TO RT EDGE PAVEMENT

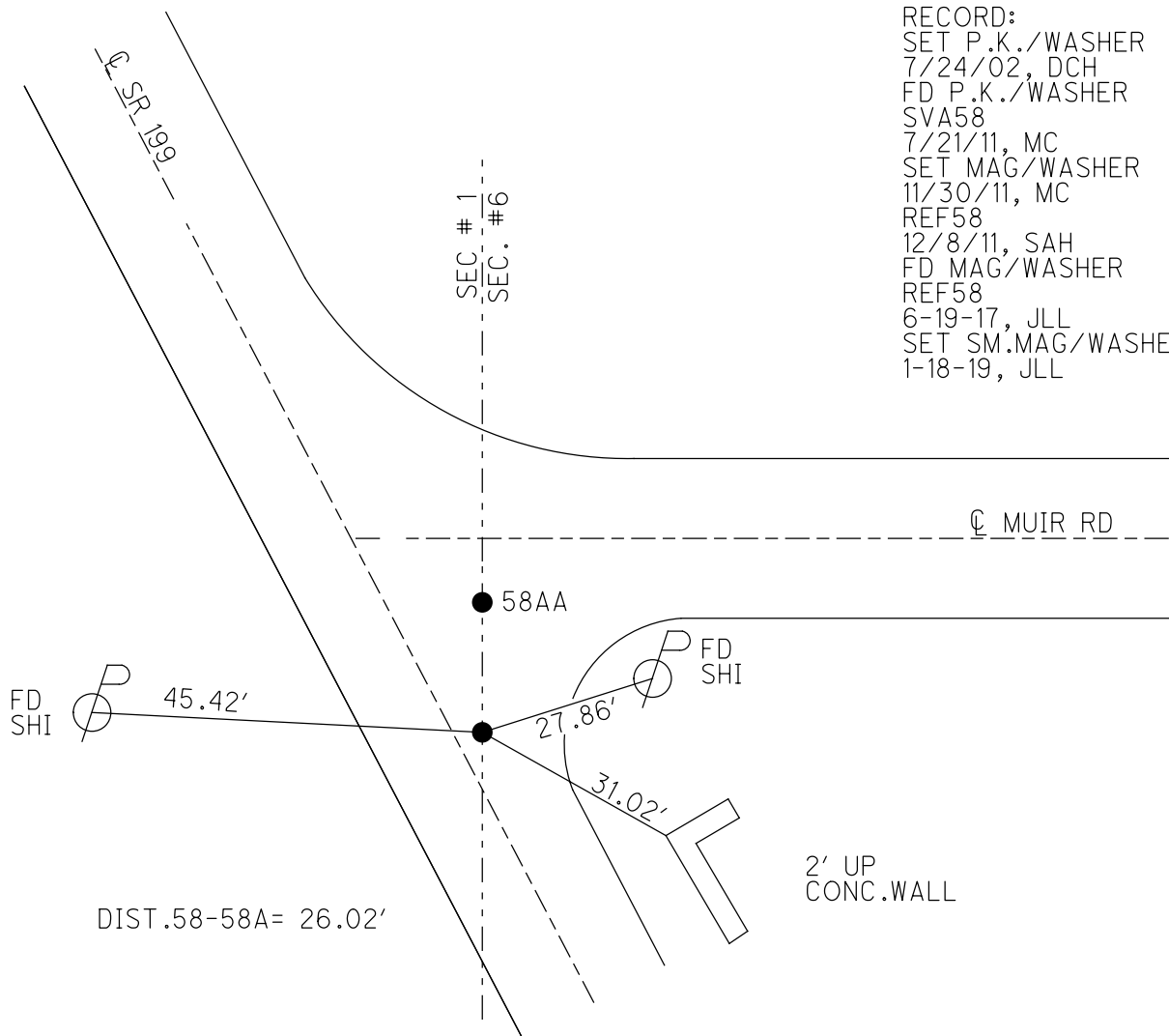
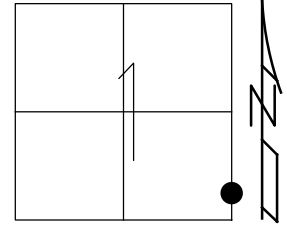
STATION: 1037+12

HORZ.DATUM: NAD83 (2011)

GEOID: 2012A

GRID: NORTHING: 639182.689

EASTING: 1685268.516

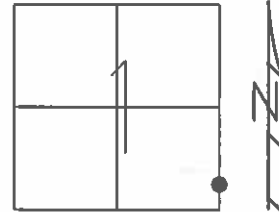


RECORD:  
 SET P.K./WASHER  
 7/24/02, DCH  
 FD P.K./WASHER  
 SVA58  
 7/21/11, MC  
 SET MAG/WASHER  
 11/30/11, MC  
 REF58  
 12/8/11, SAH  
 FD MAG/WASHER  
 REF58  
 6-19-17, JLL  
 SET SM.MAG/WASHER  
 1-18-19, JLL

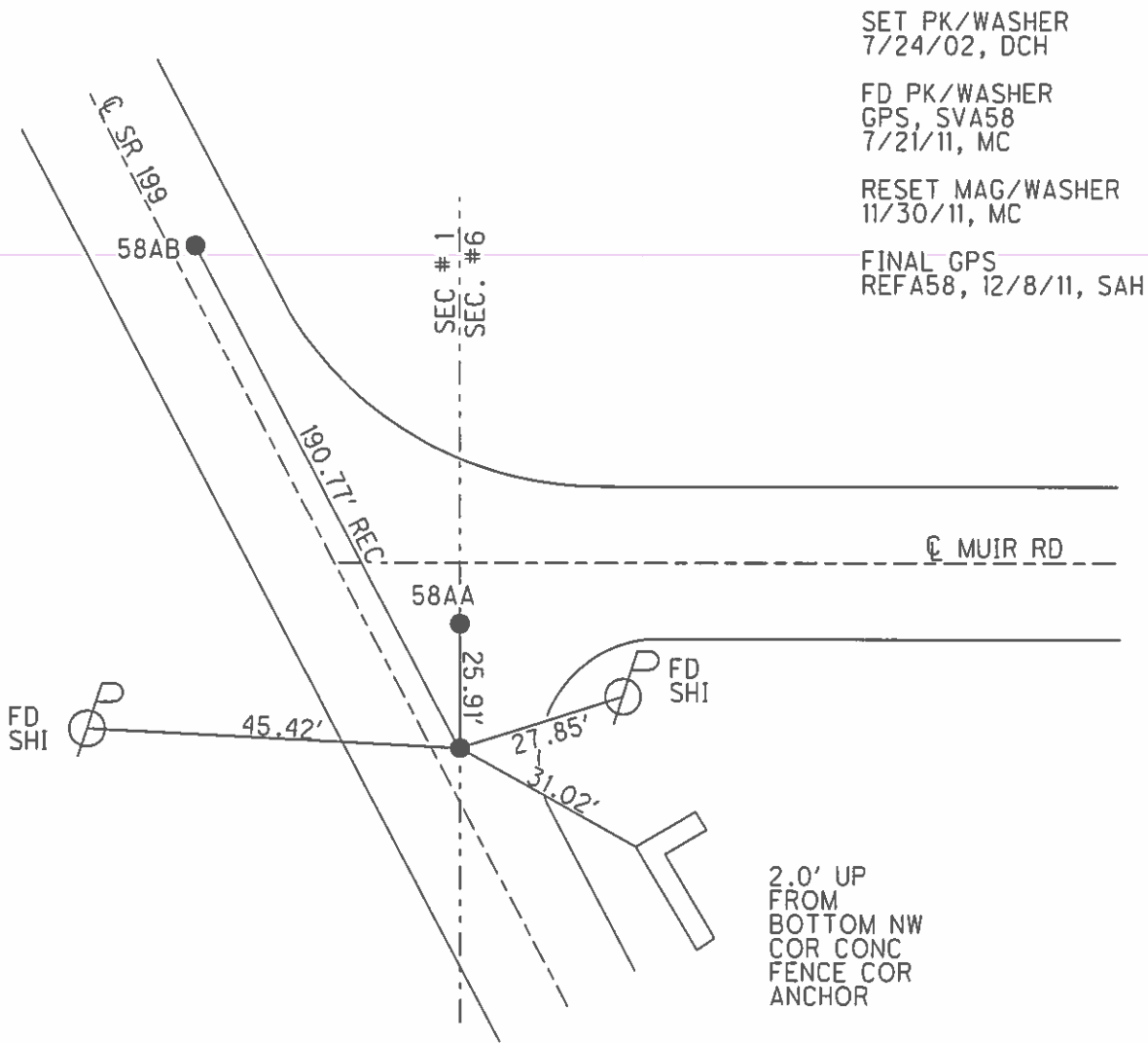
**O.D.O.T. DISTRICT 2 SURVEY OFFICE (USE ONLY)**

PERSONNEL	REFERENCE NO.	58	SHEET	23	OF	72
NOTES	FINGER	DATE	7/21/11	ROUTE	SR 199	
H.C.	HUSS	WEATHER	SUNNY	COUNTY	WOOD	
R.C.	CANTERBURY	TEMP.	87°	TOWNSHIP	WEBSTER	
				SECTION	1	
				T 5 N	R 11 E	

TYPE MONUMENT PK/WASHER  
 ON SURFACE - ~~BELOW~~ ON  
~~LEFT - C PAV'T~~ - RIGHT 2.5'  
7.9' TO RT EDGE PAVEMENT  
 S.L.M. 1037+12



GRID: NORTHING: 639182.734 EASTING: 1685268.470



O.D.O.T. DISTRICT 2 SURVEY OFFICE

PERSONNEL

REFERENCE NO. 58

SHEET 7 OF 45

NOTES ROUSOS

DATE 4-2-02

ROUTE 199

H.C. HOMAN

WEATHER CLOUDY

COUNTY WOOD

R.C. ROUSOS

TEMP. 60

TOWNSHIP WEBSTER

SECTION 1 & 6

T 5 N R 11 & E  
12

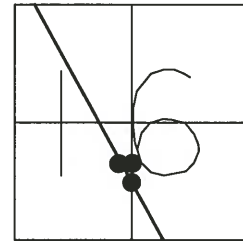
TYPE MONUMENT P.K.'S & WASHERS

ON SURFACE - ~~BELOW~~ YES

LEFT - Q PAV'T - RIGHT SEE BELOW

TO EDGE PAVEMENT

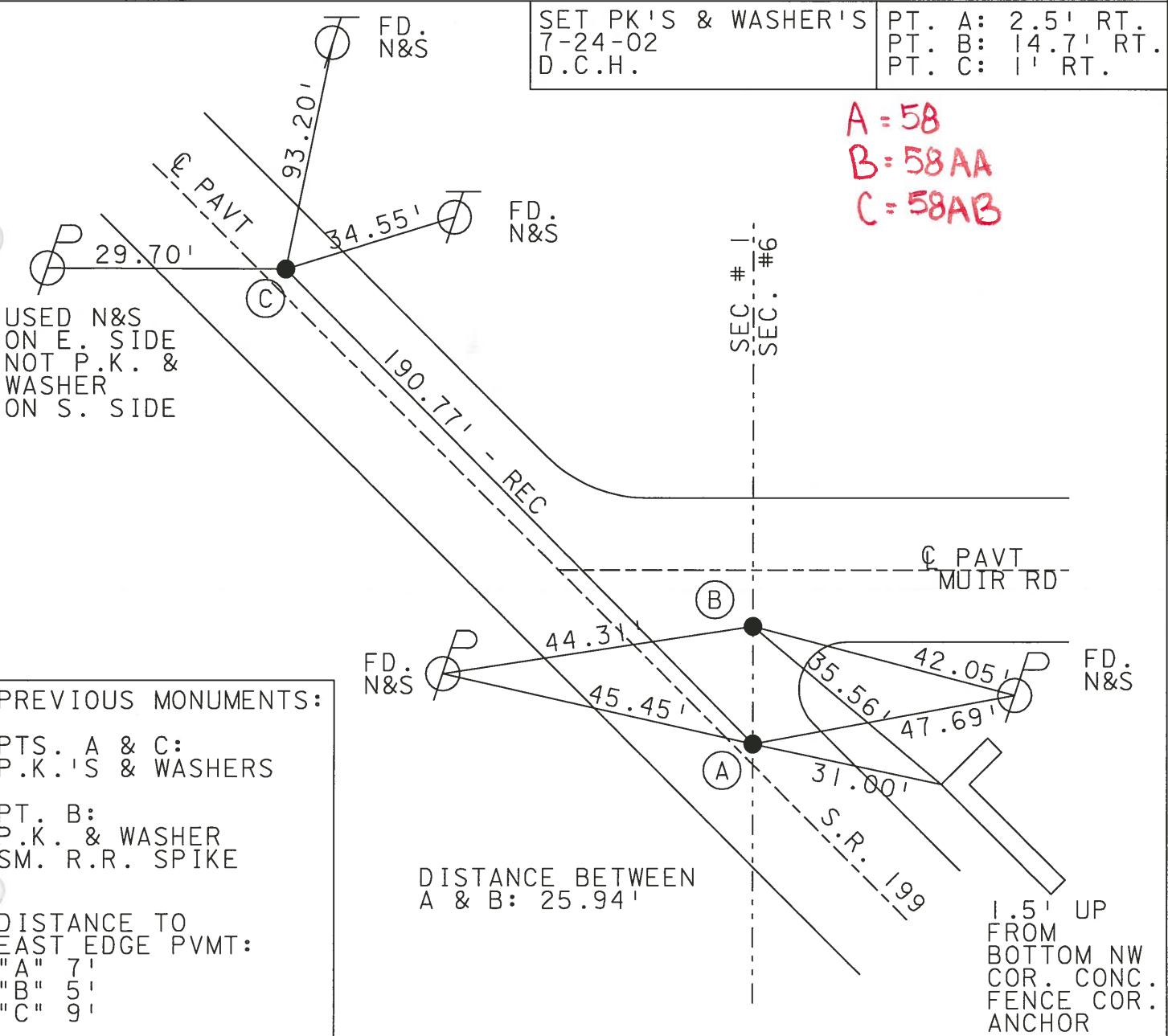
S.L.M. 1037+12



SET PK'S & WASHER'S  
7-24-02  
D.C.H.

PT. A: 2.5' RT.  
PT. B: 14.7' RT.  
PT. C: 1' RT.

A = 58  
B = 58AA  
C = 58AB



USED N&S  
ON E. SIDE  
NOT P.K. &  
WASHER  
ON S. SIDE

PREVIOUS MONUMENTS:  
PTS. A & C:  
P.K.'S & WASHERS  
PT. B:  
P.K. & WASHER  
SM. R.R. SPIKE

DISTANCE TO  
EAST EDGE PVMT:  
"A" 7'  
"B" 5'  
"C" 9'

DISTANCE BETWEEN  
A & B: 25.94'

1.5' UP  
FROM  
BOTTOM NW  
COR. CONC.  
FENCE COR.  
ANCHOR

# O.D.O.T. DISTRICT 2 SURVEY OFFICE

PERSONNEL

REFERENCE NO. 58

SHEET 7 OF 26

NOTES CHENEY

H.C. BARBOUR

R.C. GEYMAN

DATE 11-15-1991

WEATHER CLOUDY

TEMP. 50° F

ROUTE 199

COUNTY WOOD

TOWNSHIP WEBSTER

SECTION 1 & 6

T5N R12E

TYPE MONUMENT SET PK'S./WASHERS

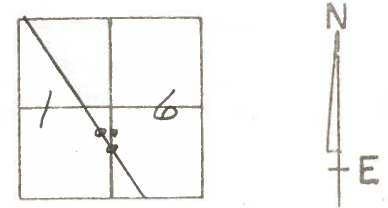
ON SURFACE - BELOW

LEFT - C. PAV'T. - RIGHT A" 2.5' RT.

B" 14.7' RT.

2' 1' RT.

S.L.M. 1035+35



PREVIOUS MONUMENTS:

PTS. "A" & "C"

PK/WASHERS

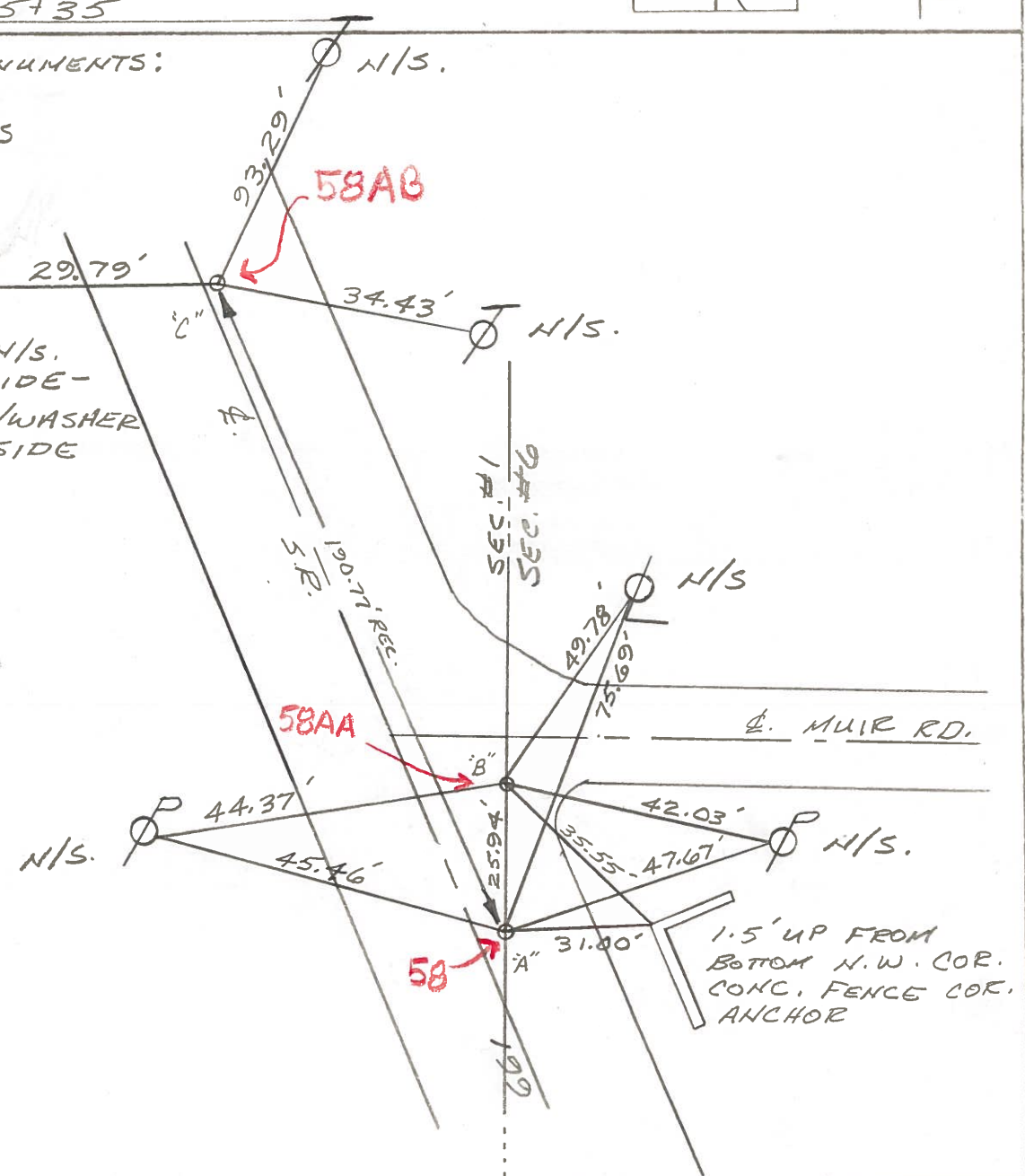
PK'S.

PT. "B"

PK/WASHER

SM. RR. SPK.

USED N/S.  
ON E. SIDE -  
NOT PK/WASHER  
ON S. SIDE



QD.O.T. DISTRICT 2 SURVEY OFFICE

SHEET \_\_\_\_\_ OF \_\_\_\_\_

County WOOD S.R. 199

Township WEBSTER

Section 1 1/2

T5N, R12E

Personnel HOFFMAN

LOEHRKE

HOUSEHOLDER

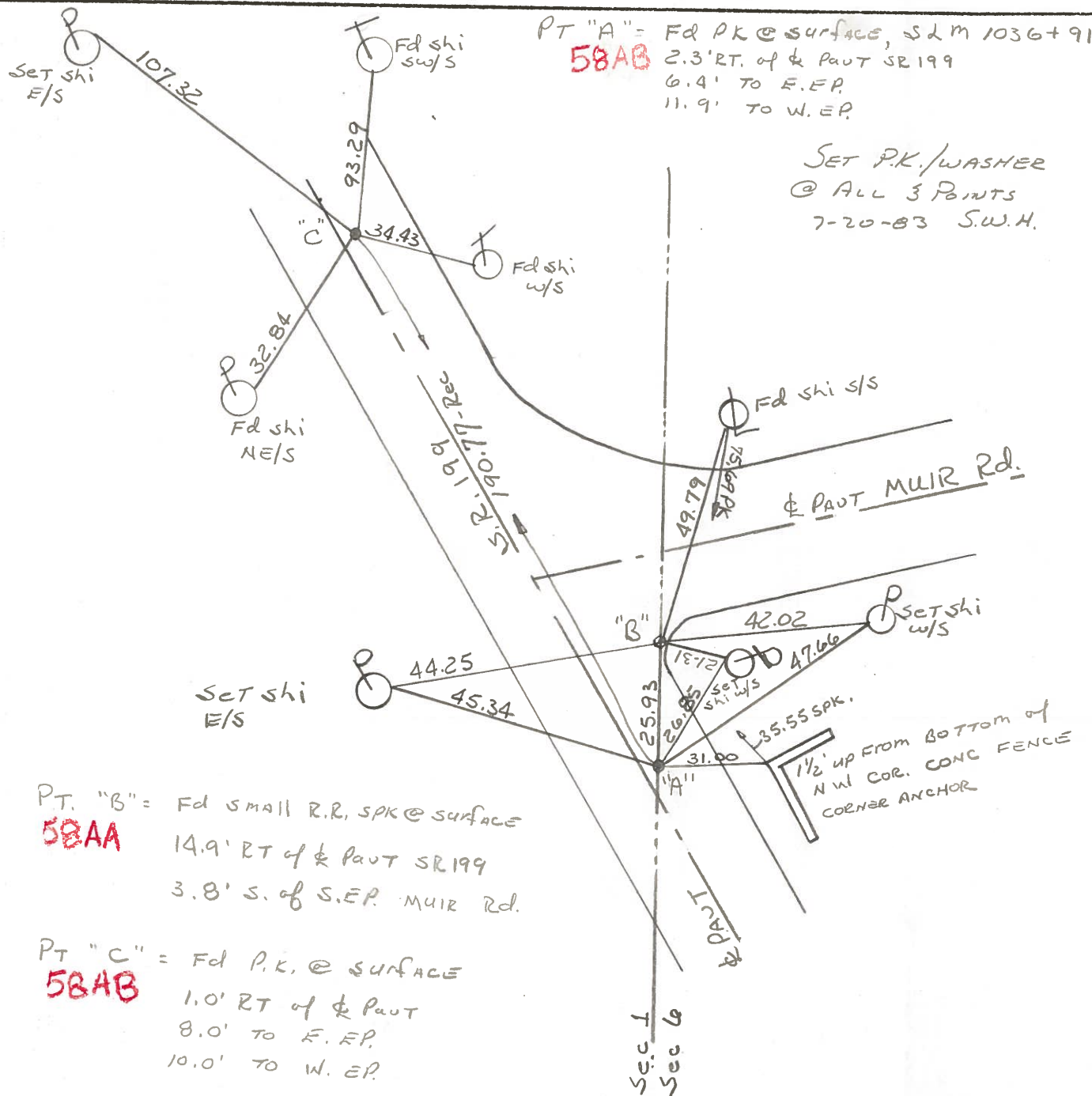
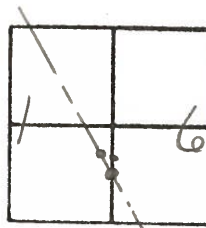
BARNHISEL

#58

Date 1-3-83

Weather Clear

Temp. +30°



O.D.O.T. DISTRICT 2 SURVEY OFFICE

SHEET

OF

County WOOD S.R. 199

Township WEBSTER

Section 6

T N, R E

Personnel TOMSIK

NEUSER

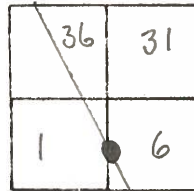
VANYO

GRANATA

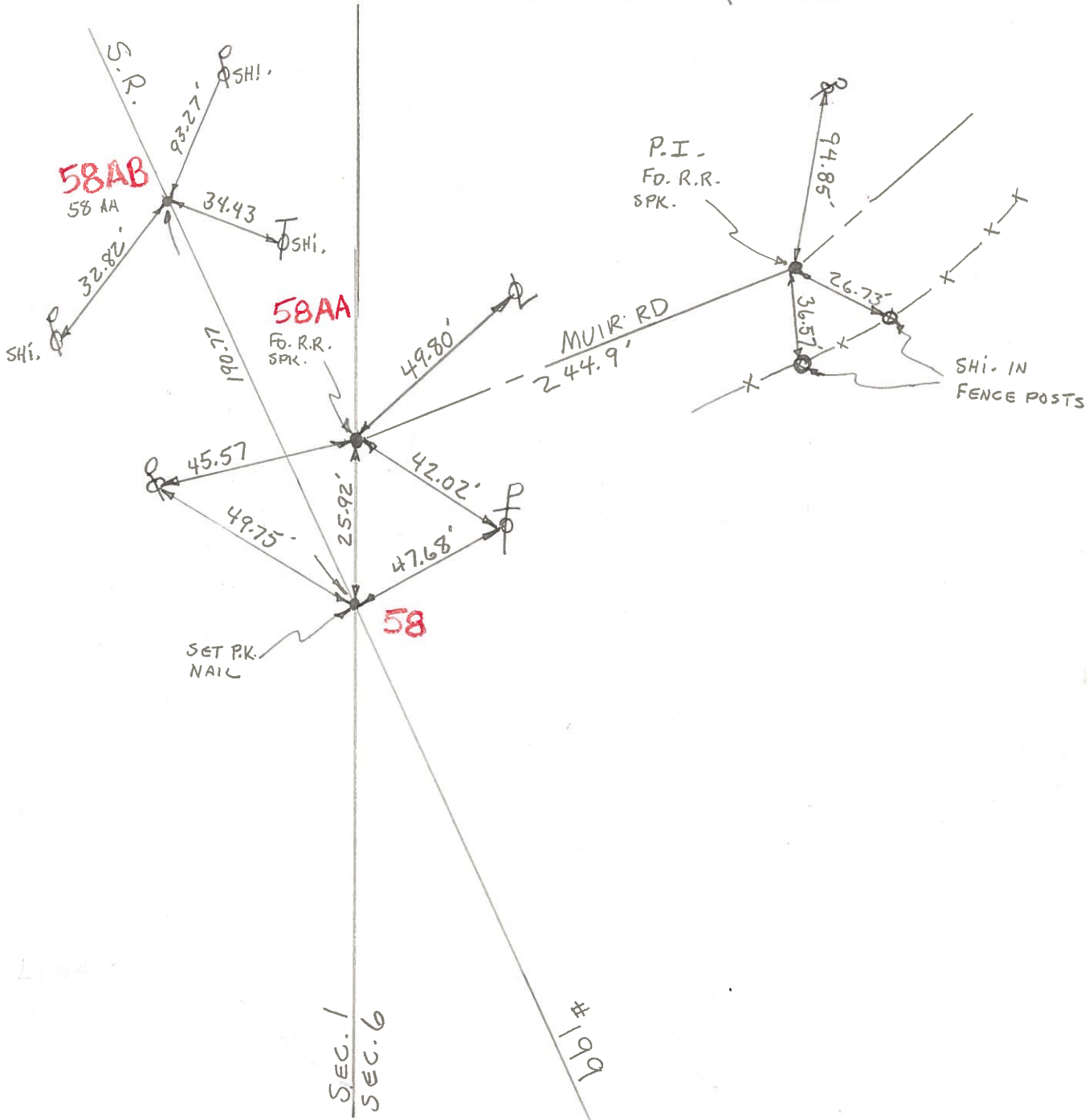
Date 12-11-71 (CHKD 8-21-73)

Weather \_\_\_\_\_

Temp. \_\_\_\_\_



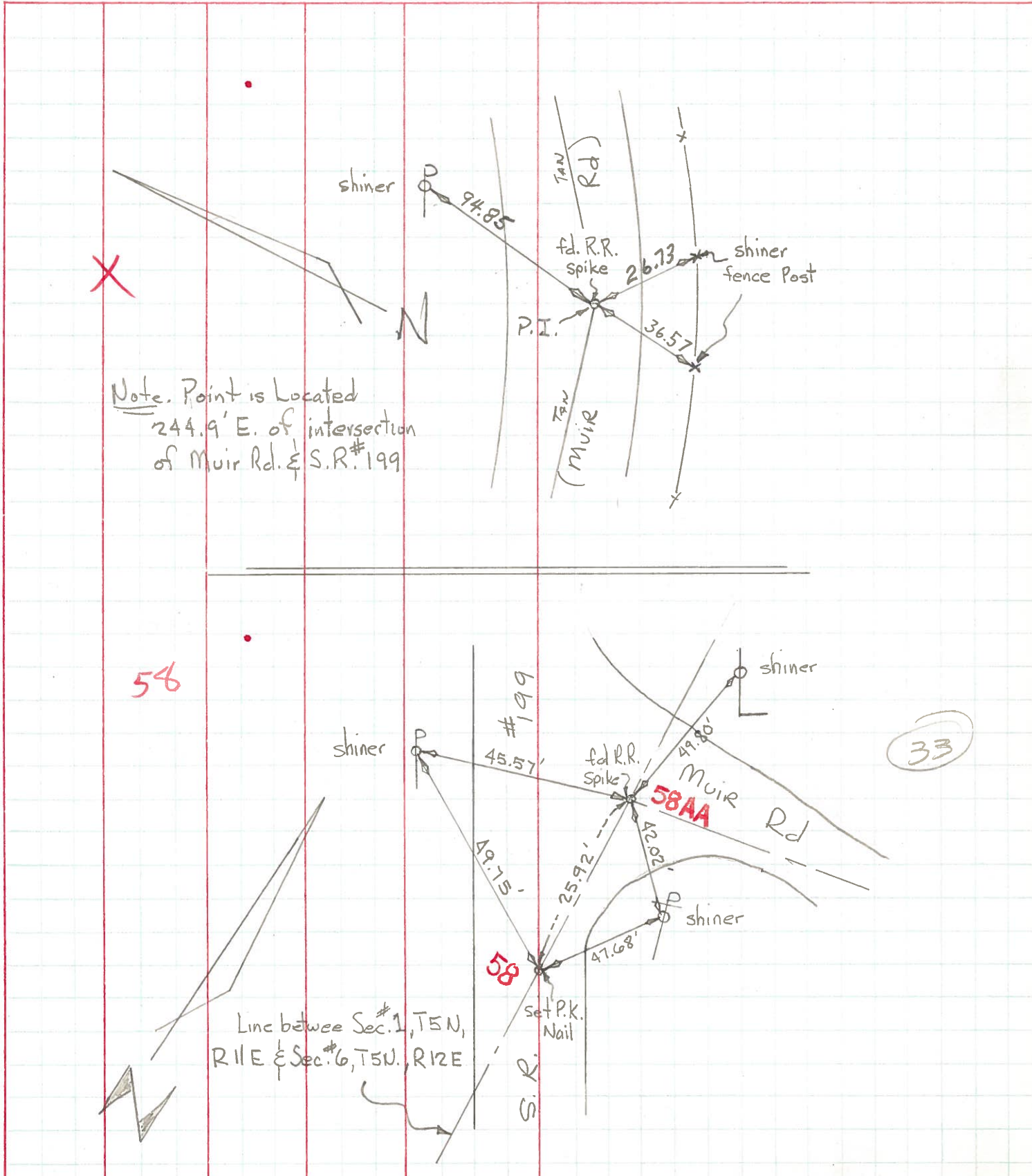
#58





PERSONNEL	TITLE	PERSONNEL	TITLE	COUNTY	DATE
Tomsic				Wood	Nov. 11, 1971
Neuser				#199	ckd 8-21-73
Vanyo				S. R.	WEATHER
Granata				SEC.	TEMP.

DESCRIPTION Ref. Mon. LEFT CENTER LINE RIGHT JOB NO. \_\_\_\_\_



PERSONNEL	TITLE	PERSONNEL	TITLE
Tamsic			
Neuser			
Vanyo			
Granata			

COUNTY WOOD DATE Nov. 11, 1971  
 S. R. #199 WEATHER \_\_\_\_\_  
 SEC. \_\_\_\_\_ TEMP. 50°E

DESCRIPTION Ref. Mon. JOB NO. \_\_\_\_\_

