

O.D.O.T. DISTRICT 2 SURVEY OFFICE (USE ONLY)

PERSONNEL

REFERENCE NO. 58 AA

SHEET 24 OF 75

NOTES RHOADES DATE 6-19-17
 H.C. LEU WEATHER FAIR
 R.C. CARSON TEMP. 70°
POORE

ROUTE SR 199
 COUNTY WOOD
 TOWNSHIP WEBSTER
 SECTION 1

DWG BY AUBLE PID 101221

T 5 N R 11 E

TYPE MONUMENT MAG/WASHER

ON SURFACE - ~~BELOW~~ ON

OFFSET \varnothing PAVEMENT 15.0' ~~LT~~ : RT

- TO - EDGE PAVEMENT

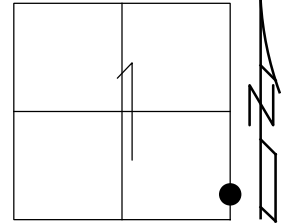
STATION: 1037+38

HORIZ.DATUM: NAD83 (2011)

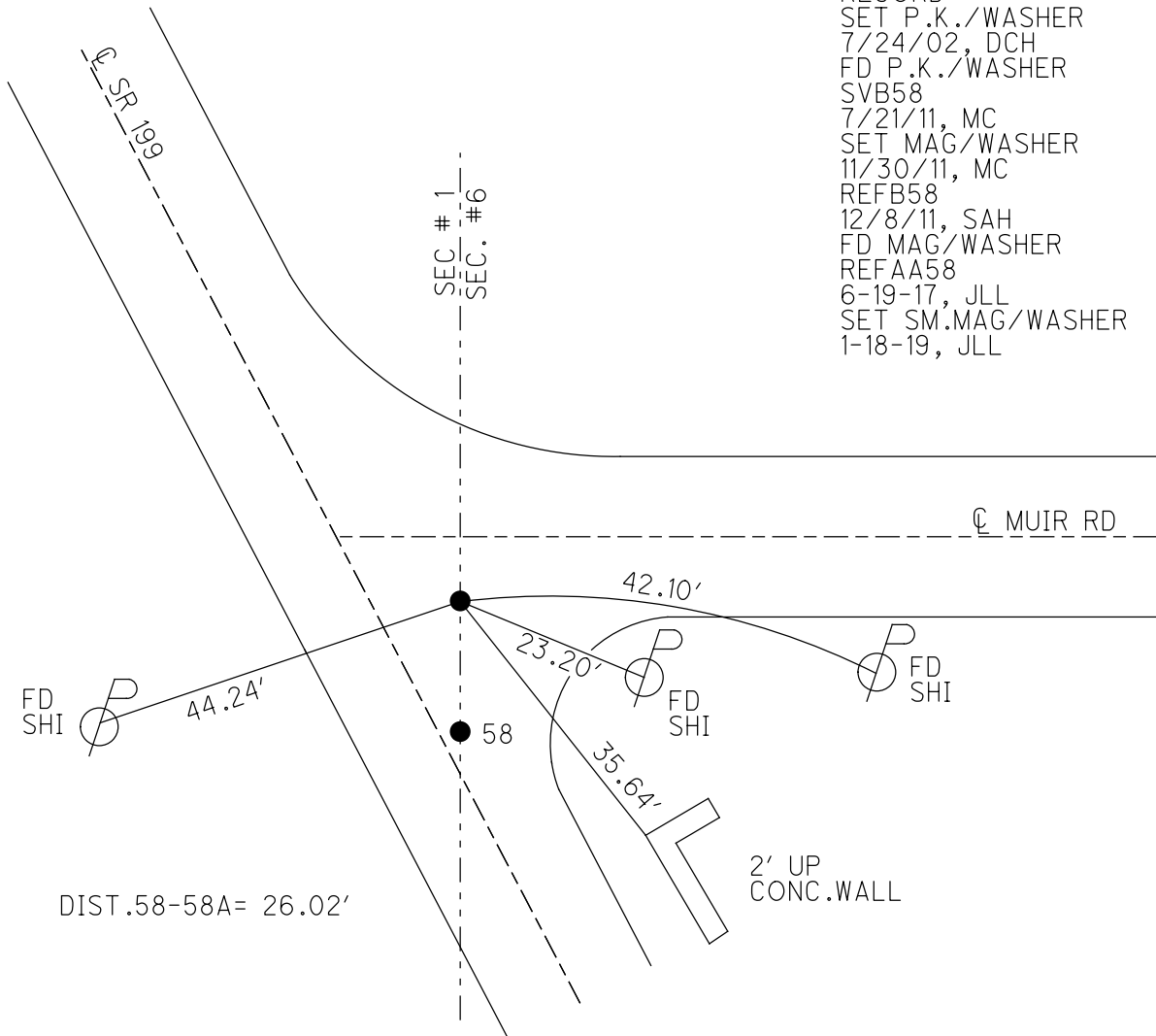
GEOID: 2012A

GRID: NORTHING: 639208.687

EASTING: 1685269.114



RECORD:
 SET P.K./WASHER
 7/24/02, DCH
 FD P.K./WASHER
 SVB58
 7/21/11, MC
 SET MAG/WASHER
 11/30/11, MC
 REFB58
 12/8/11, SAH
 FD MAG/WASHER
 REFAA58
 6-19-17, JLL
 SET SM.MAG/WASHER
 1-18-19, JLL



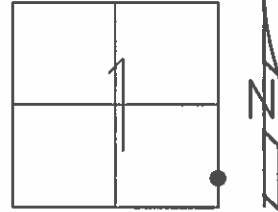
DIST.58-58A= 26.02'

2' UP
 CONC.WALL

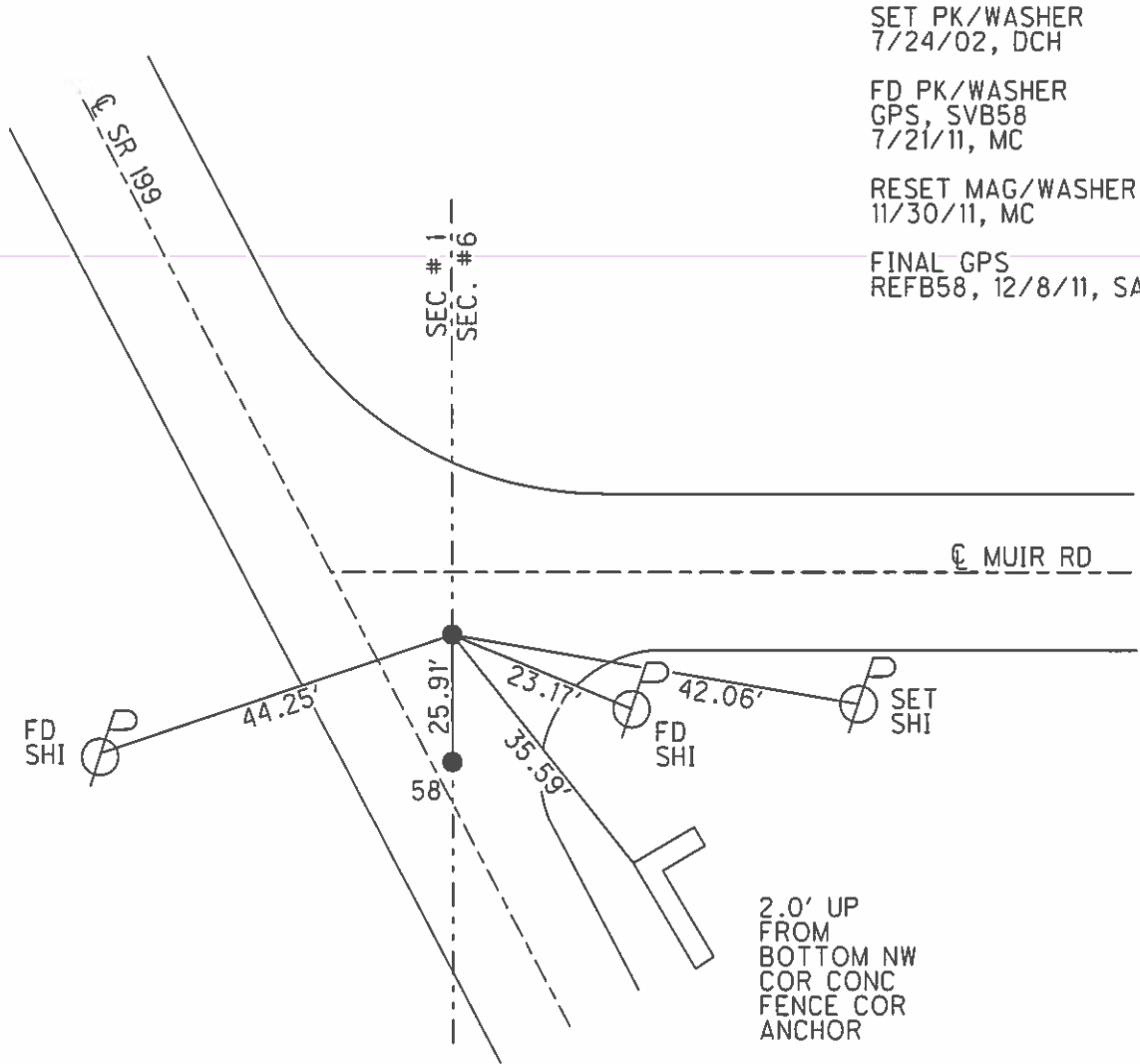
O.D.O.T. DISTRICT 2 SURVEY OFFICE (USE ONLY)

PERSONNEL _____ REFERENCE NO. 58 AA SHEET 24 OF 72
 NOTES FINGER DATE 7/21/11 ROUTE SR 199
 H.C. HUSS WEATHER SUNNY COUNTY WOOD
 R.C. CANTERBURY TEMP. 87° TOWNSHIP WEBSTER
 SECTION 1
T 5 N R 11 E

TYPE MONUMENT _____ PK/WASHER _____
 ON SURFACE - ~~BELOW~~ _____ ON _____
~~LEFT - C PAV'T~~ - RIGHT 15.0'
 _____ TO _____ EDGE PAVEMENT
 S.L.M. _____



GRID: NORTHING: 639208.727 EASTING: 1685269.107



SET PK/WASHER
 7/24/02, DCH
 FD PK/WASHER
 GPS, SVB58
 7/21/11, MC
 RESET MAG/WASHER
 11/30/11, MC
 FINAL GPS
 REFB58, 12/8/11, SAH

2.0' UP
 FROM
 BOTTOM NW
 COR CONC
 FENCE COR
 ANCHOR

O.D.O.T. DISTRICT 2 SURVEY OFFICE

PERSONNEL

REFERENCE NO. 58

SHEET 7 OF 45

NOTES ROUSOS

DATE 4-2-02

ROUTE 199

H.C. HOMAN

WEATHER CLOUDY

COUNTY WOOD

R.C. ROUSOS

TEMP. 60

TOWNSHIP WEBSTER

SECTION 1 & 6

T 5 N R 11 & E
12

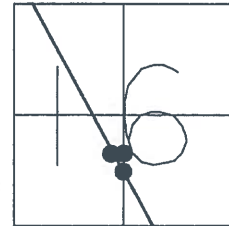
TYPE MONUMENT P.K.'S & WASHERS

ON SURFACE - ~~BELOW~~ YES

LEFT - Q PAV'T - RIGHT SEE BELOW

TO EDGE PAVEMENT

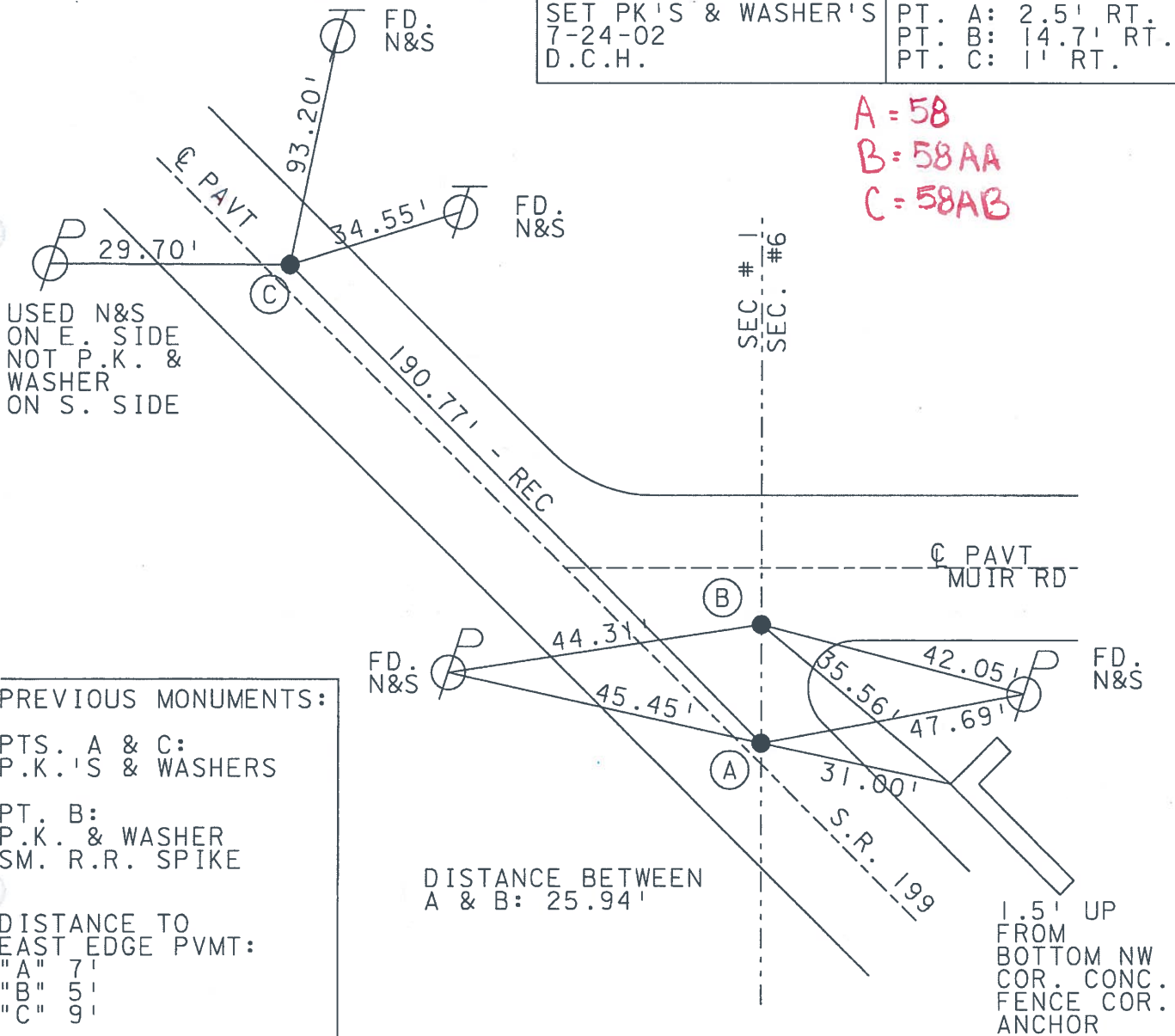
S.L.M. 1037+12



SET PK'S & WASHER'S
7-24-02
D.C.H.

PT. A: 2.5' RT.
PT. B: 14.7' RT.
PT. C: 1' RT.

A = 58
B = 58AA
C = 58AB



PREVIOUS MONUMENTS:

PTS. A & C:
P.K.'S & WASHERS

PT. B:
P.K. & WASHER
SM. R.R. SPIKE

DISTANCE TO
EAST EDGE PVMT:
"A" 7'
"B" 5'
"C" 9'

O.D.O.T. DISTRICT 2 SURVEY OFFICE

PERSONNEL

REFERENCE NO. 58

SHEET 7 OF 26

NOTES CHENEY

H.C. BARBOUR

R.C. GEYMAN

DATE 11-15-1991

WEATHER CLOUDY

TEMP. 50° F

ROUTE 199

COUNTY WOOD

TOWNSHIP WEBSTER

SECTION 1 & 6

T5N R12E

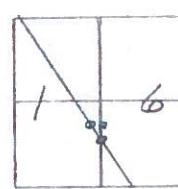
TYPE MONUMENT SET PK'S./WASHERS

ON SURFACE - BELOW

LEFT - C. PAV'T. - RIGHT 19.7' RT.

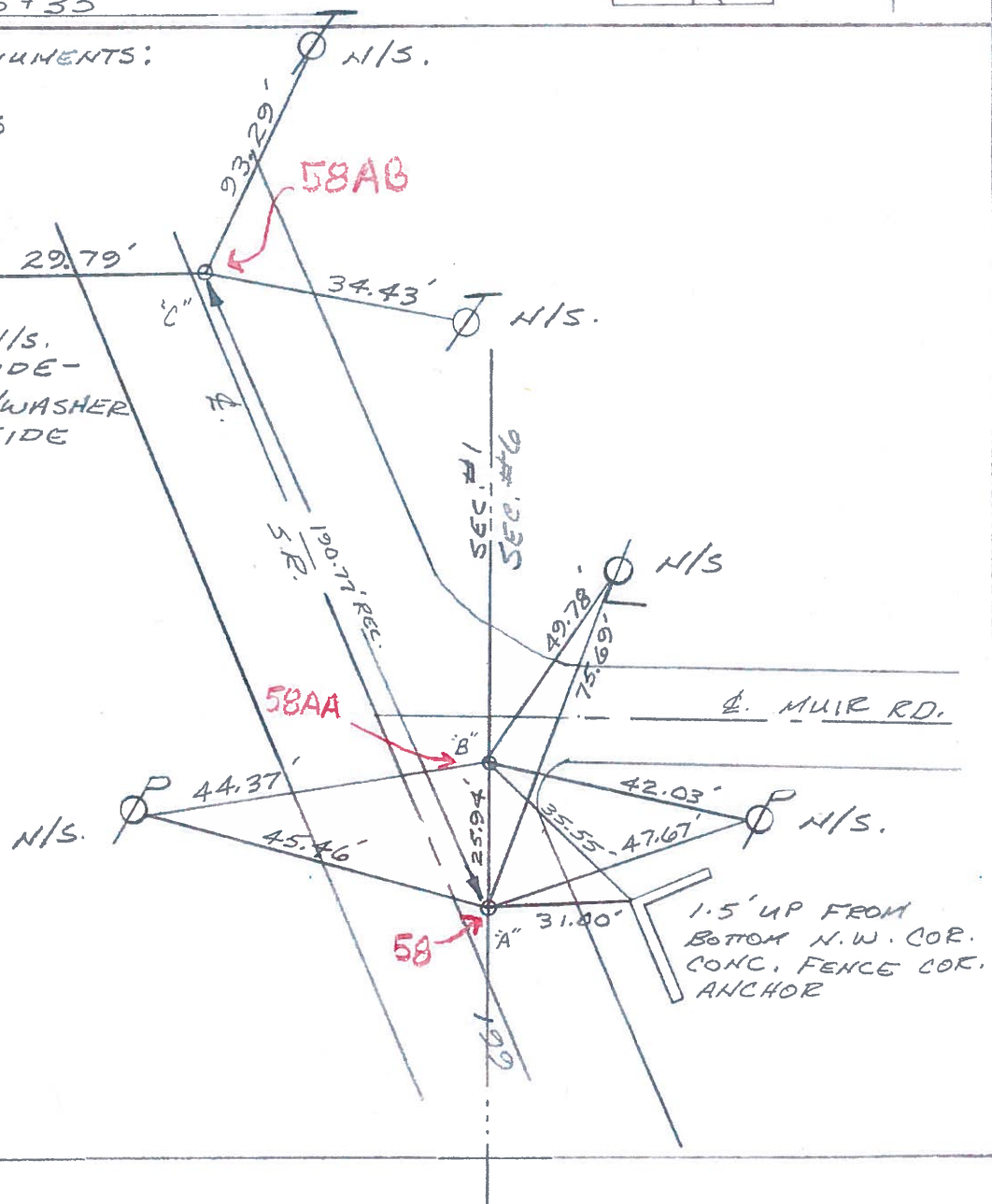
7' RT.
3' RT.
TO E. EDGE PAVEMENT

S.L.M. 1035435



PREVIOUS MONUMENTS:
PTS. "A & C"
PK/WASHERS
PK'S.
PT. "B"

PK/WASHER P
SM. RR SPK. 29.79'
USED N/S.
ON E. SIDE -
NOT PK/WASHER
ON S. SIDE



QD.OT. DISTRICT 2 SURVEY OFFICE

SHEET _____ OF _____

County WOOD S.R. 199

Date 1-3-83

Township WEBSTER

Weather clear

Section 1 1/2

Temp. +30°

T₅N, R₁₂E

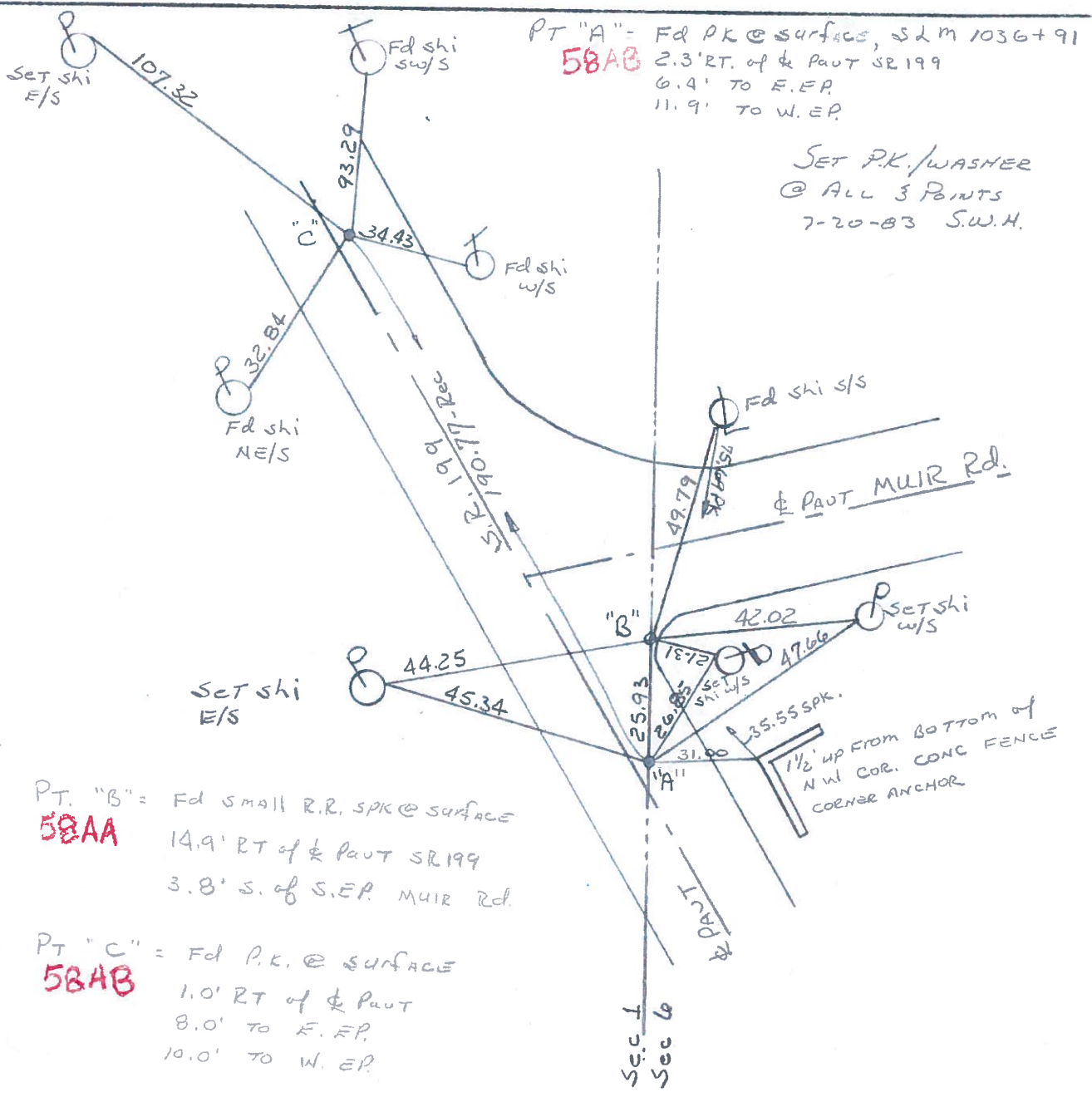
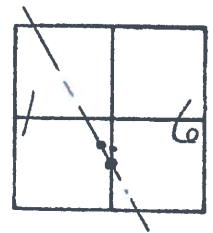
Personnel HOFFMAN

LOEHRKE

HOUSEHOLDER

BARNHISEL

#58



O.D.O.T. DISTRICT 2 SURVEY OFFICE

SHEET

OF

County WOOD S.R. 199

Date 12-11-71 (CHKD 8-21-73)

Township WEBSTER

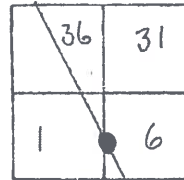
Weather _____

Section 6

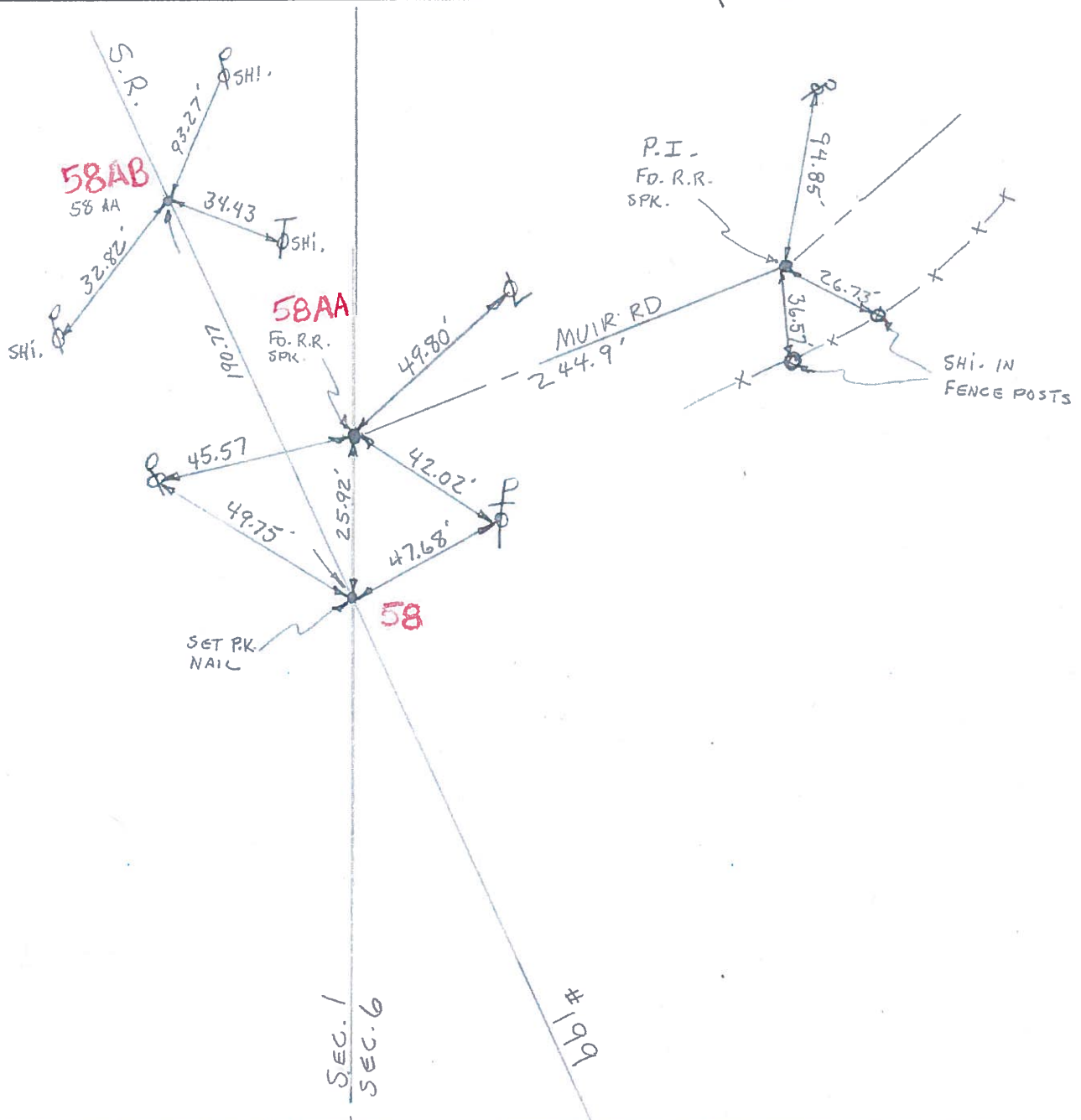
Temp. _____

T N, R E

Personnel TOMSIK

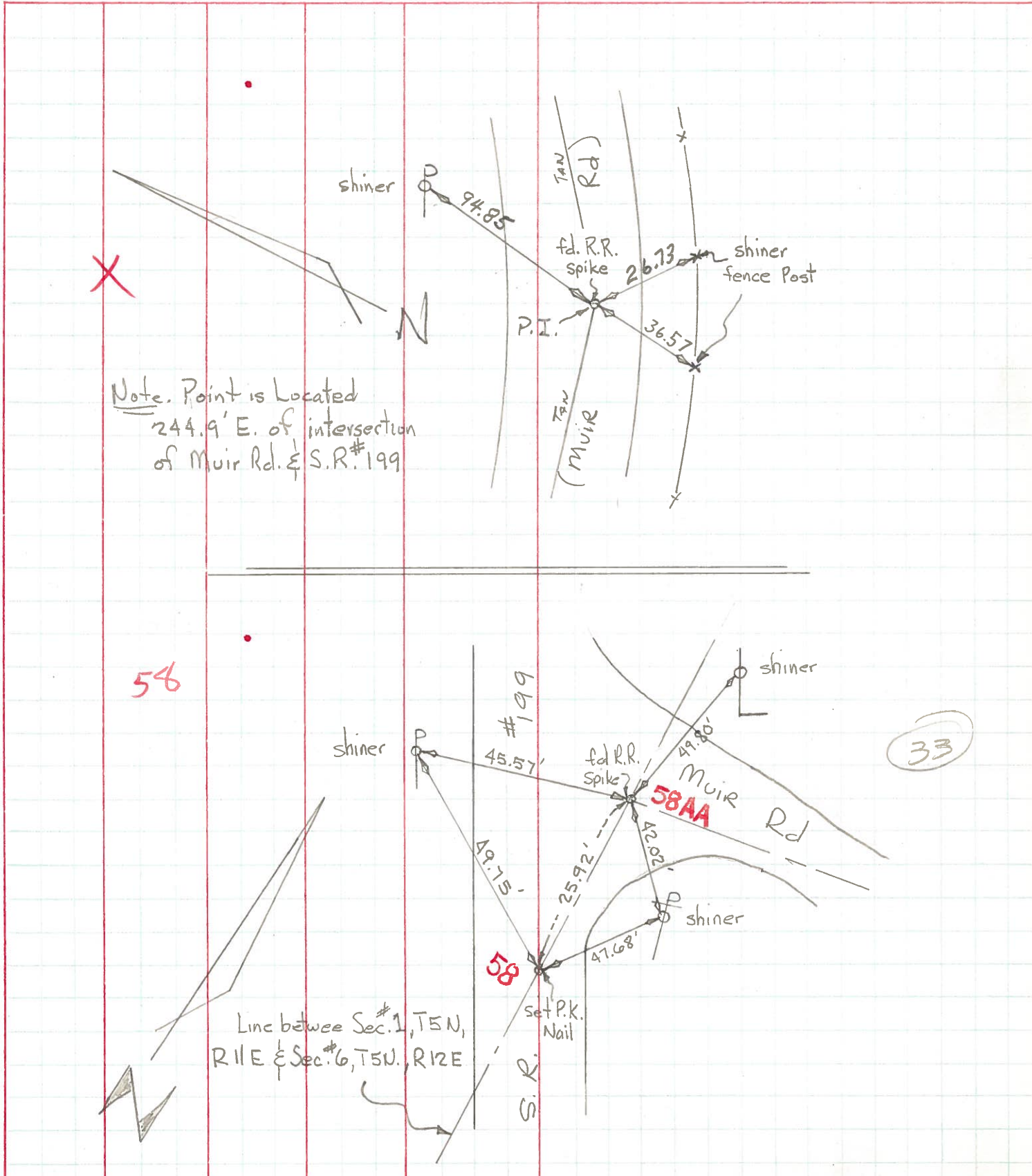


#58



PERSONNEL	TITLE	PERSONNEL	TITLE	COUNTY	DATE
Tomsic				Wood	Nov. 11, 1971
Neuser				#199	ckd 8-21-73
Vanyo				S. R.	WEATHER
Granata				SEC.	TEMP.

DESCRIPTION Ref. Mon. LEFT CENTER LINE RIGHT JOB NO. _____



PERSONNEL	TITLE	PERSONNEL	TITLE
Tamsic			
Neuser			
Vanyo			
Granata			

COUNTY WOOD DATE Nov. 11, 1971
 S. R. #199 WEATHER _____
 SEC. _____ TEMP. 50°E

DESCRIPTION Ref. Mon. JOB NO. _____

