

O.D.O.T. DISTRICT 2 SURVEY OFFICE (USE ONLY)

PERSONNEL

REFERENCE NO. 58 A

SHEET 26 OF 75

NOTES RHOADES

DATE 6-19-17

ROUTE SR 199

H.C. LEU

WEATHER CLOUDY

COUNTY WOOD

R.C. CARSON

TEMP. 80°

TOWNSHIP WEBSTER

POORE

SECTION 1

DWG BY AUBLE PID 101221

T 5 N R 11 E

TYPE MONUMENT MAG/WASHER

ON SURFACE - ~~BELOW~~ ON

OFFSET  $\varnothing$  PAVEMENT 1.8' ~~LT~~ : RT

9.4' TO RT EDGE PAVEMENT

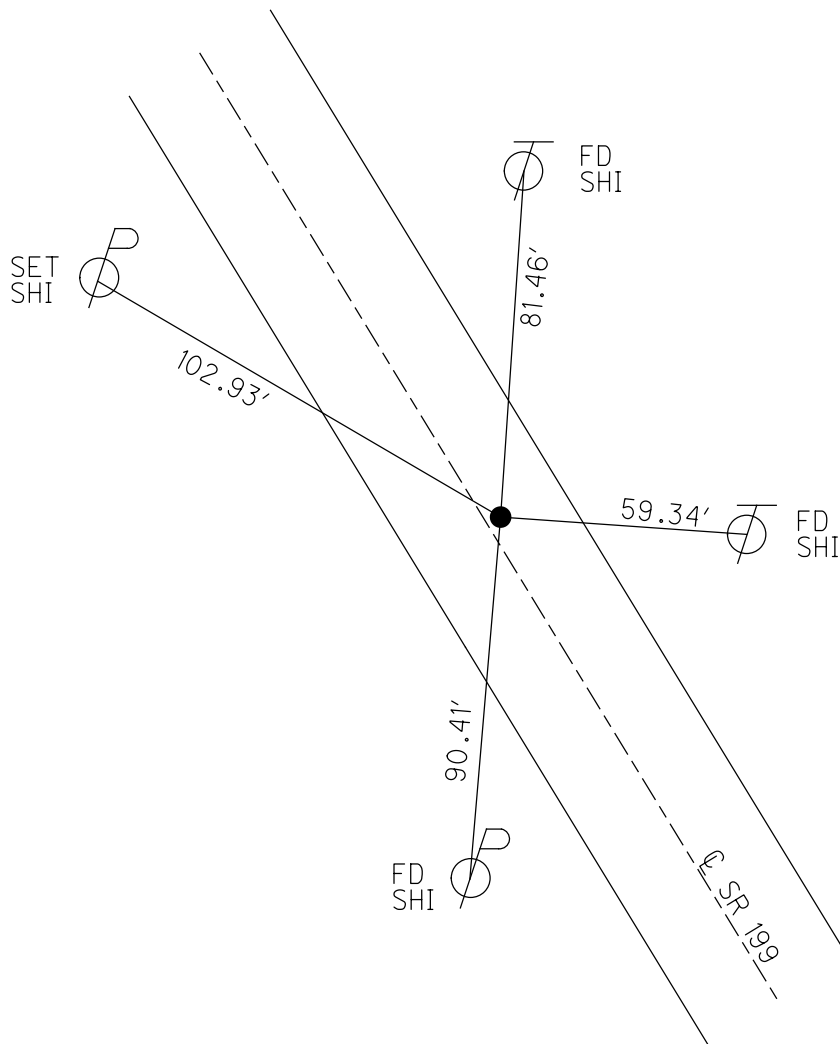
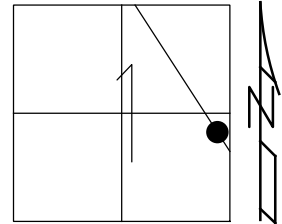
STATION: 1043+71

HORIZ.DATUM: NAD83 (2011)

GEOID: 2012A

GRID: NORTHING: 639770.996

EASTING: 1684971.112

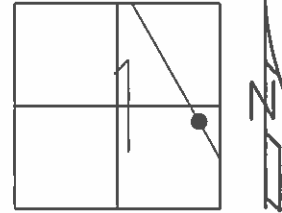


RECORD:  
 PREVIOUS MONUMENTS:  
 P.K./WASHER  
 P.K.NAIL  
 SET P.K./WASHER  
 7/24/02, DCH  
 FD P.K./WASHER  
 SVD58  
 7/21/11, MC  
 SET MAG/WASHER  
 11/30/11, MC  
 REFD58  
 12/8/11, SAH  
 FD MAG/WASHER  
 REFA58  
 6-19-17, JLL  
 SET MAG/WASHER  
 5-15-19, JLL

O.D.O.T. DISTRICT 2 SURVEY OFFICE (USE ONLY)

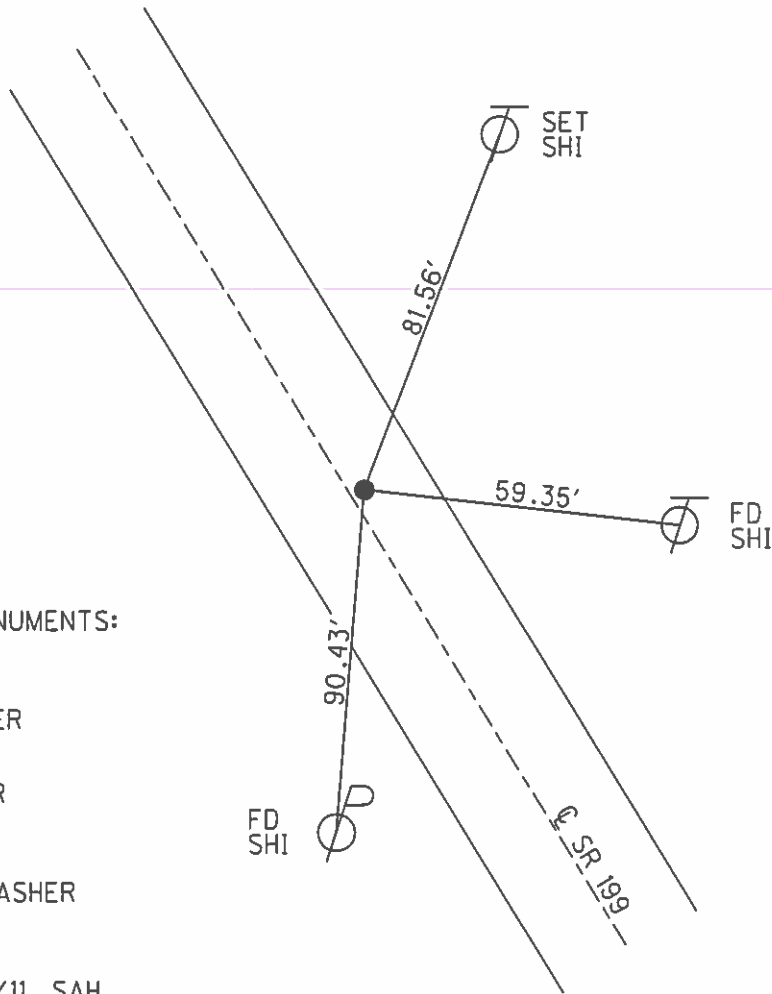
PERSONNEL \_\_\_\_\_ REFERENCE NO. 58 A SHEET 26 OF 72  
 NOTES \_\_\_\_\_ DATE 7/21/11 ROUTE SR 199  
 H.C. FINGER WEATHER SUNNY COUNTY WOOD  
 R.C. HUSS TEMP. 87° TOWNSHIP WEBSTER  
 \_\_\_\_\_ SECTION 1  
 \_\_\_\_\_ T 5 N R 11 E

TYPE MONUMENT \_\_\_\_\_ PK/WASHER  
 ON SURFACE - ~~BELOW~~ \_\_\_\_\_ ON  
~~LEFT - C PAV'T~~ - RIGHT \_\_\_\_\_ 1.0'  
9.4' TO RT EDGE PAVEMENT  
 S.L.M. \_\_\_\_\_ 1043+71



GRID: NORTHING: 639771.052 EASTING: 1684971.063

PREVIOUS MONUMENTS:  
 PK/WASHER  
 PK  
 SET PK/WASHER  
 7/24/02, DCH  
 FD PK/WASHER  
 GPS, SVD58  
 7/21/11, MC  
 RESET MAG/WASHER  
 11/30/11, MC  
 FINAL GPS  
 REFD58, 12/8/11, SAH



O.D.O.T. DISTRICT 2 SURVEY OFFICE

PERSONNEL

REFERENCE NO. 58A

SHEET 8 OF 45

NOTES ROUSOS

DATE 4-2-02

ROUTE S.R. 199

H.C. HOMAN

WEATHER CLOUDY

COUNTY WOOD

R.C. ROUSOS

TEMP. 60

TOWNSHIP WEBSTER

SECTION 1

T 5 N R 11 E

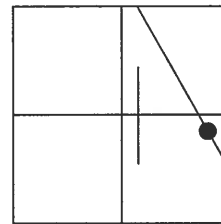
TYPE MONUMENT P.K. & WASHER

ON SURFACE - ~~BELOW~~ ON SURFACE

~~LEFT~~ - Q PAVT - RIGHT 1' RT.

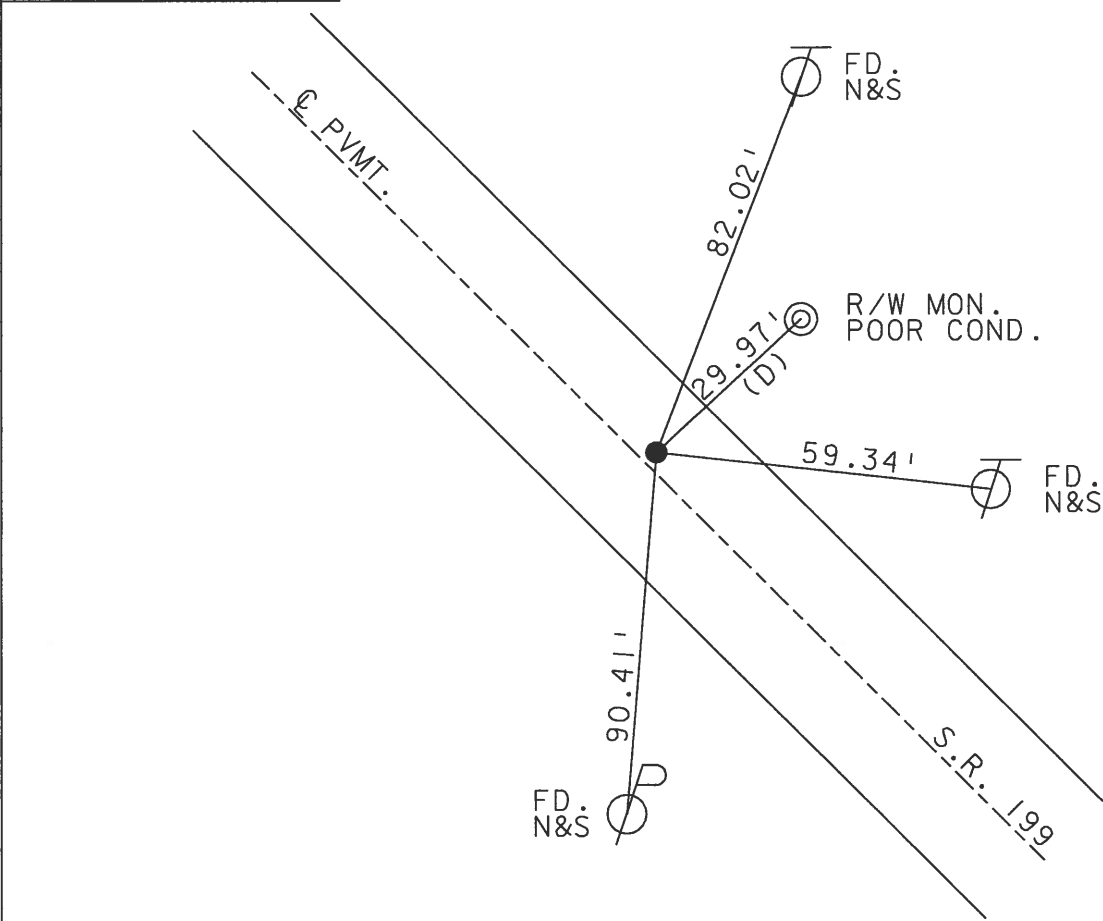
8.5' TO RT. EDGE PAVEMENT

S.L.M. 1043+71



SET PK & WASHER  
7-24-02  
D.C.H.

PREVIOUS MONUMENTS:  
PK & WASHER  
P.K.



# O.D.O.T. DISTRICT 2 SURVEY OFFICE

PERSONNEL

REFERENCE NO. 58-A

SHEET 8 OF 26

NOTES CHENEY

H.C. BARBOUR

R.C. BEYMAN

DATE 11-15-1991

WEATHER CLOUDY

TEMP. 50°

ROUTE 199

COUNTY WOOD

TOWNSHIP WEBSTER

SECTION 1

T5N R11E

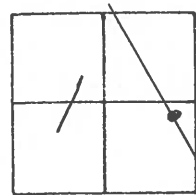
TYPE MONUMENT SET PK/WASHER

ON SURFACE - ~~BELOW~~

~~LEFT~~ - Q PAV'T. - RIGHT 1'

8.5' TO E. EDGE PAVEMENT

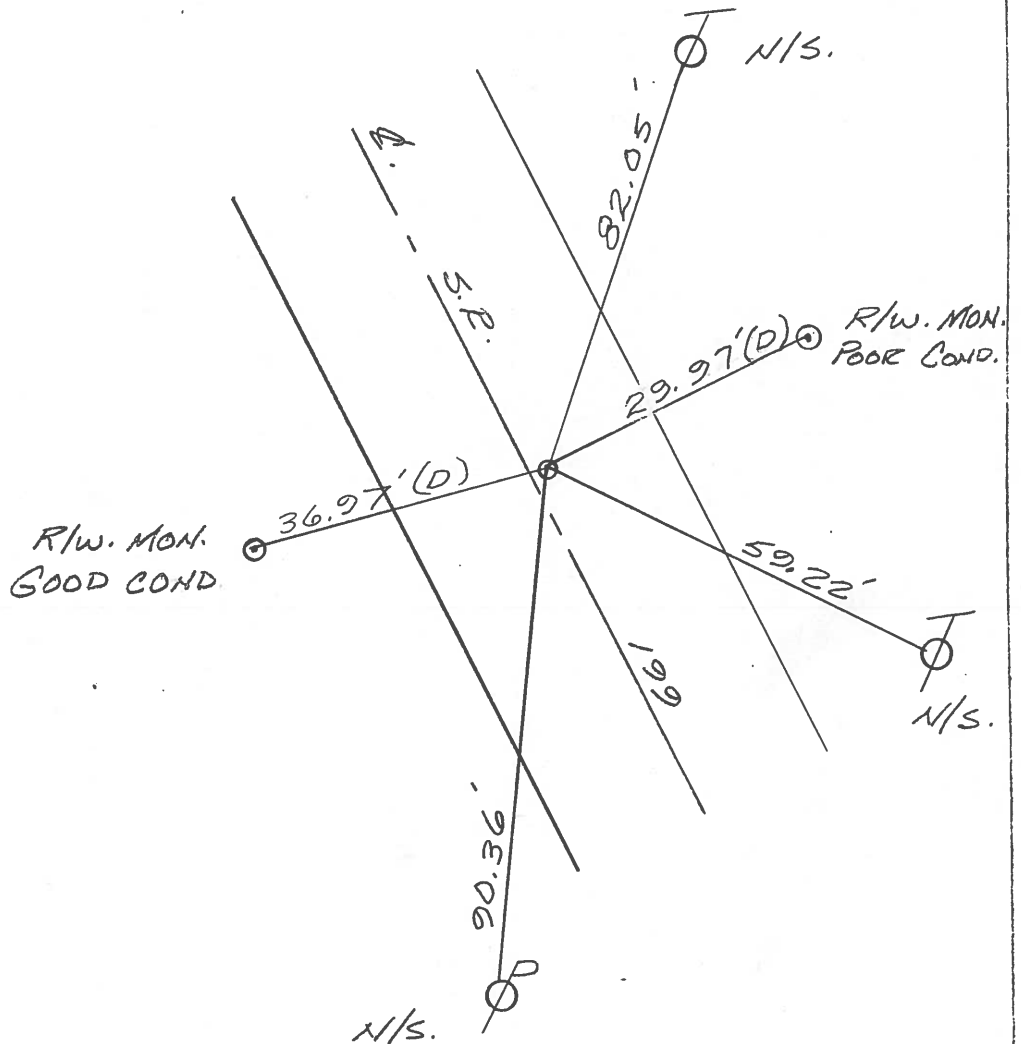
S.L.M. 1041494



PREVIOUS MONUMENTS:

PK/WASHER

P.K.



Q.D.O.T. DISTRICT 2 SURVEY OFFICE

SHEET \_\_\_\_\_ OF \_\_\_\_\_

County Wood S.R. 199

Date 1-3-83

Township WEBSTER

Weather CLEAR

Section 1

Temp. +30°

T5N, R11E

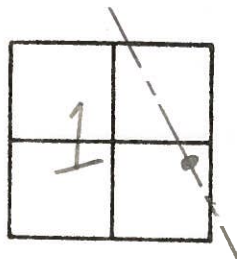
Personnel HOFFMAN

LOEHRKE

HOUSEHOLDER

BARNHISEL

#58-A



Fd P.K. @ surface

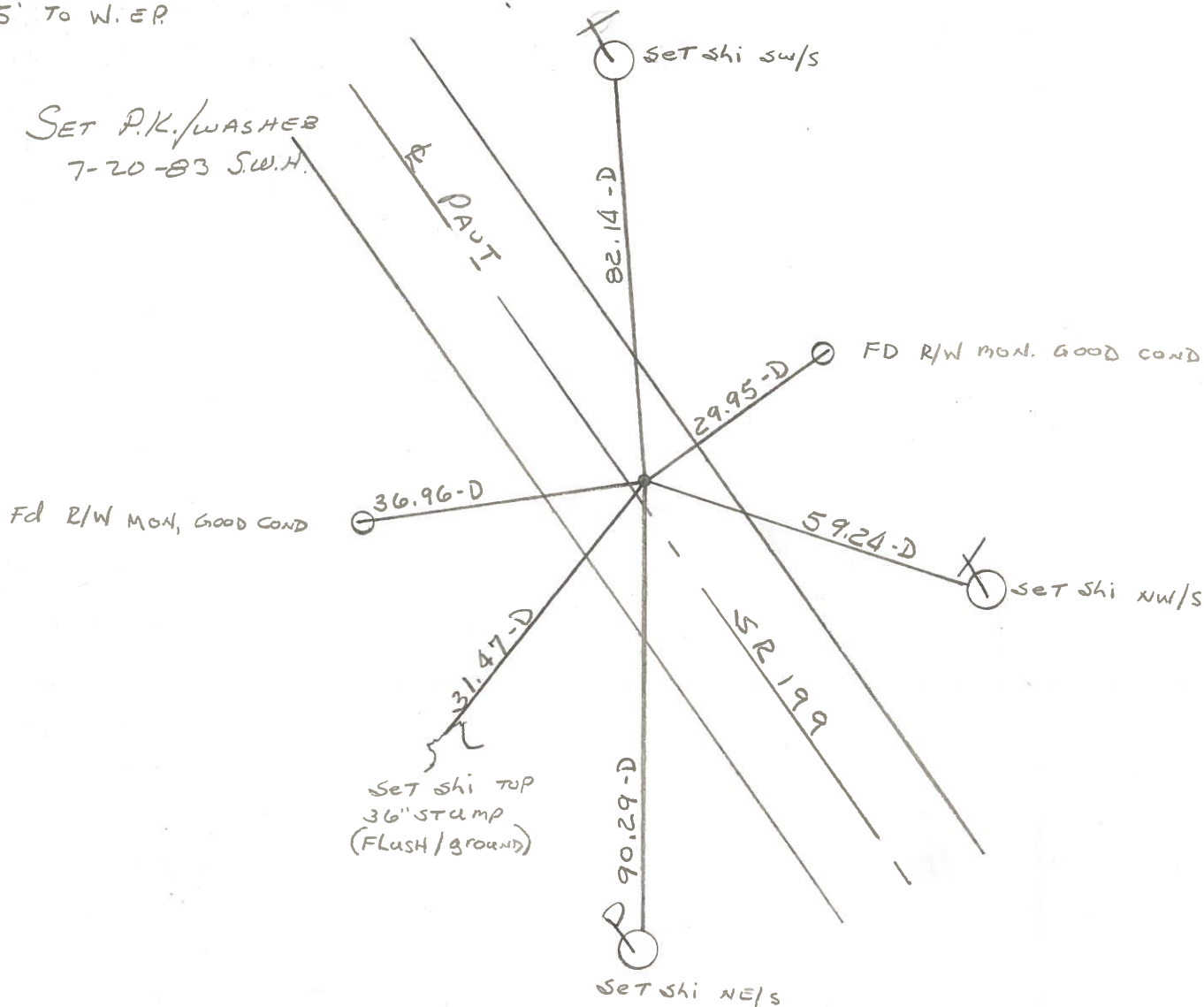
S.L.M. 1043 + 49

1.1' RT of PAUT

8.1' TO E.E.P.

10.5' TO W.E.P.

SET P.K./WASHER  
7-20-83 S.W.H.



O.D.O.T. DISTRICT 2 SURVEY OFFICE

SHEET \_\_\_\_\_ OF \_\_\_\_\_

County WOOD S.R. 199

Date 12-5-71 <sup>CHKD</sup> (8-21-73)

Township WEBSTER

Weather \_\_\_\_\_

Section 1

Temp. 50°

T N, R E

Personnel TOMSIK

35	36
2	1



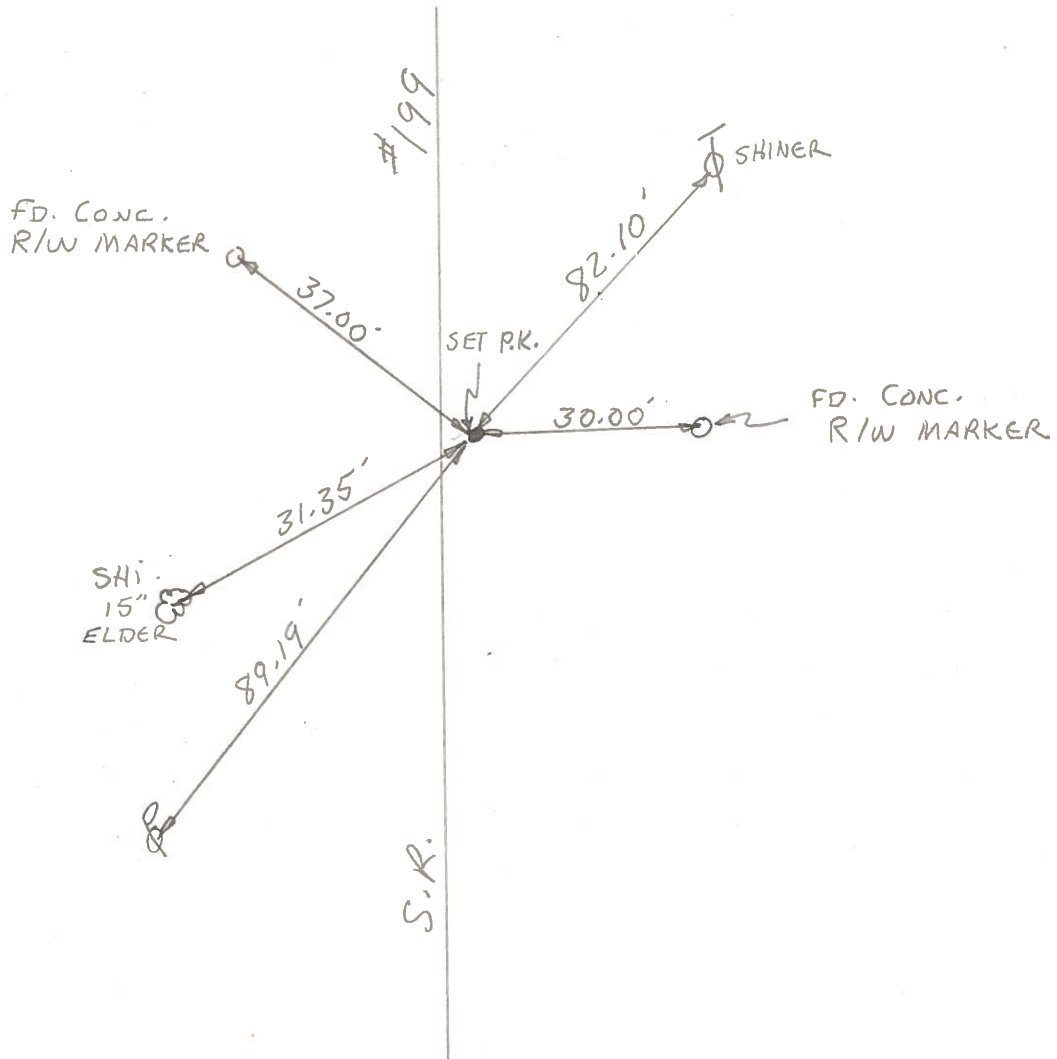
NEUSER

VANYO

GRANATA

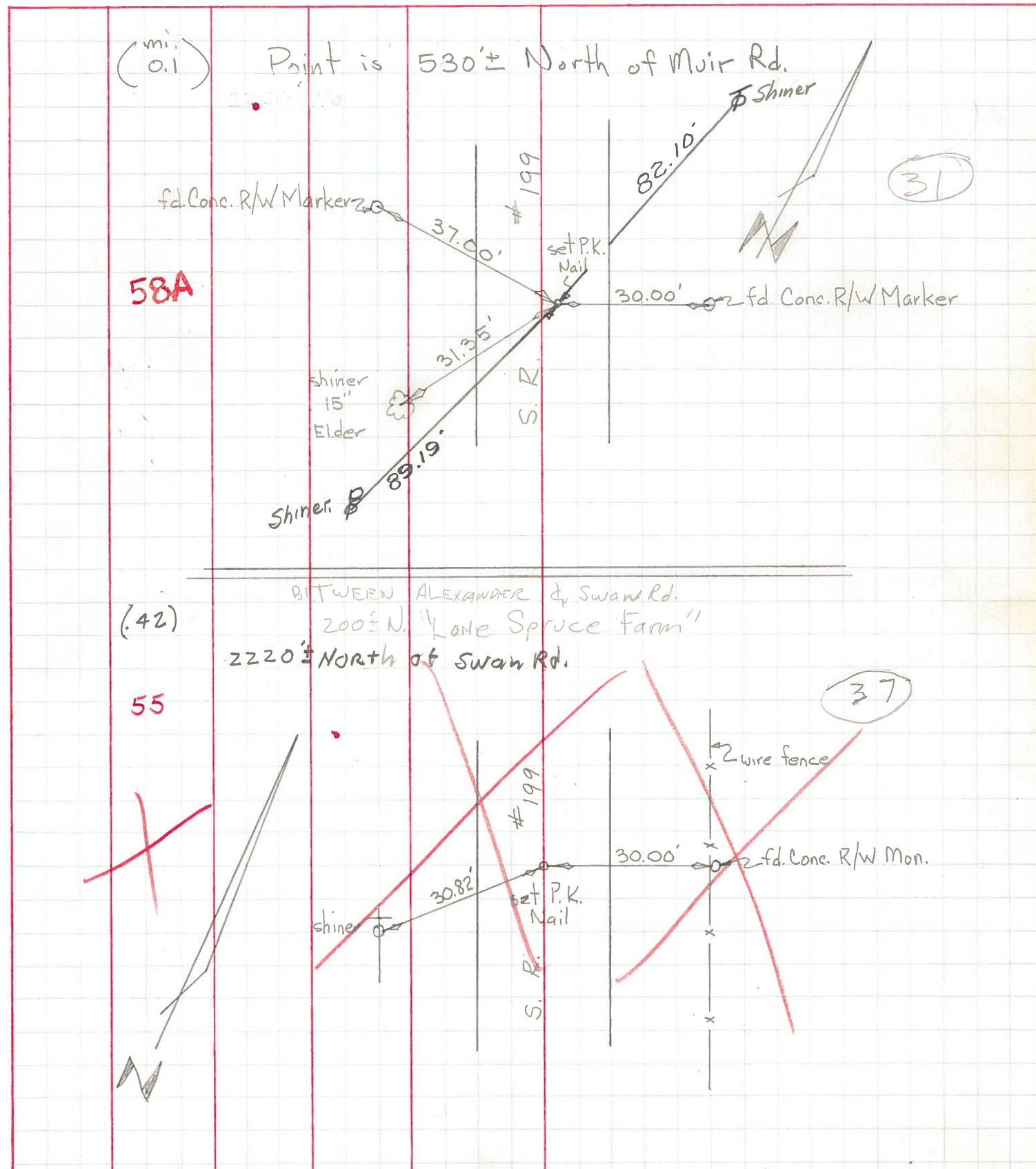
58-AAA

POINT IS (0.1) 530 ± NORTH OF MUIR RD.



PERSONNEL	TITLE	PERSONNEL	TITLE	COUNTY	DATE
Tomsic				WOOD	Nov. 5, 1971
Neuser				# 199	ckd- 8-21-73
Vanya				S. R.	WEATHER
Granata				SEC.	TEMP. 50°±

DESCRIPTION Ref. Mon. LEFT CENTER LINE RIGHT JOB NO. \_\_\_\_\_





PERSONNEL	TITLE	PERSONNEL	TITLE	COUNTY	DATE
Tamsic				Wood	Sept. 15, 1971
Neuser				# 199	cl'd 8-21-73
Vandy					WEATHER
Granata				SEC.	TEMP.

DESCRIPTION Ref. Mon. LEFT CENTER LINE RIGHT JOB NO.

