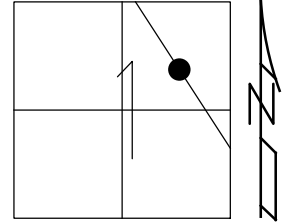


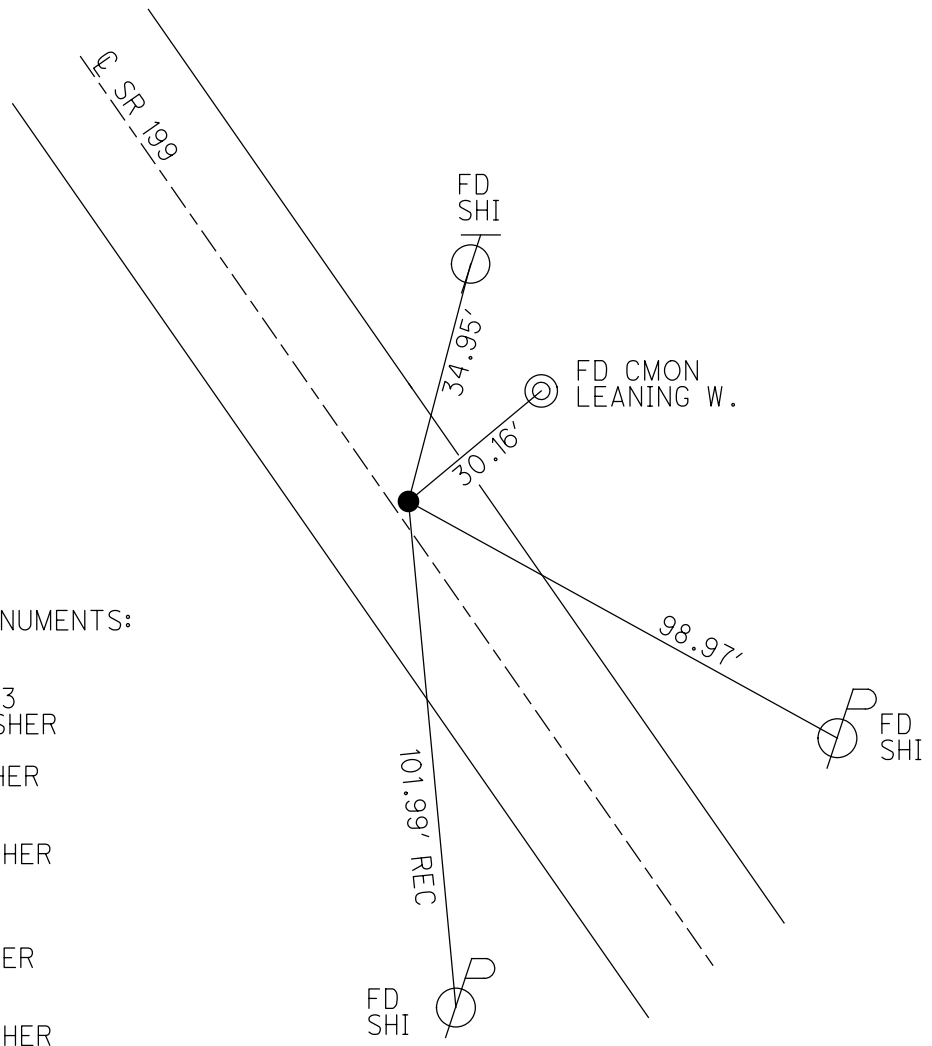
O.D.O.T. DISTRICT 2 SURVEY OFFICE (USE ONLY)

PERSONNEL _____ REFERENCE NO. 58 D SHEET 29 OF 75
 NOTES RHOADES DATE 6-19-17 ROUTE SR 199
 H.C. LEU WEATHER CLOUDY COUNTY WOOD
 R.C. CARSON TEMP. 80° TOWNSHIP WEBSTER
POORE SECTION 1
 DWG BY AUBLE PID 101221 T 5 N R 11 E

TYPE MONUMENT MAG/WASHER
 ON SURFACE - ~~BELOW~~ ON
 OFFSET Q PAVEMENT 3.2' ~~LT~~ : RT
7' TO RT EDGE PAVEMENT
 STATION: 1063+38



HORIZ.DATUM: NAD83 (2011) GEOID: 2012A
 GRID: NORTHING: 641531.519 EASTING: 1684094.694

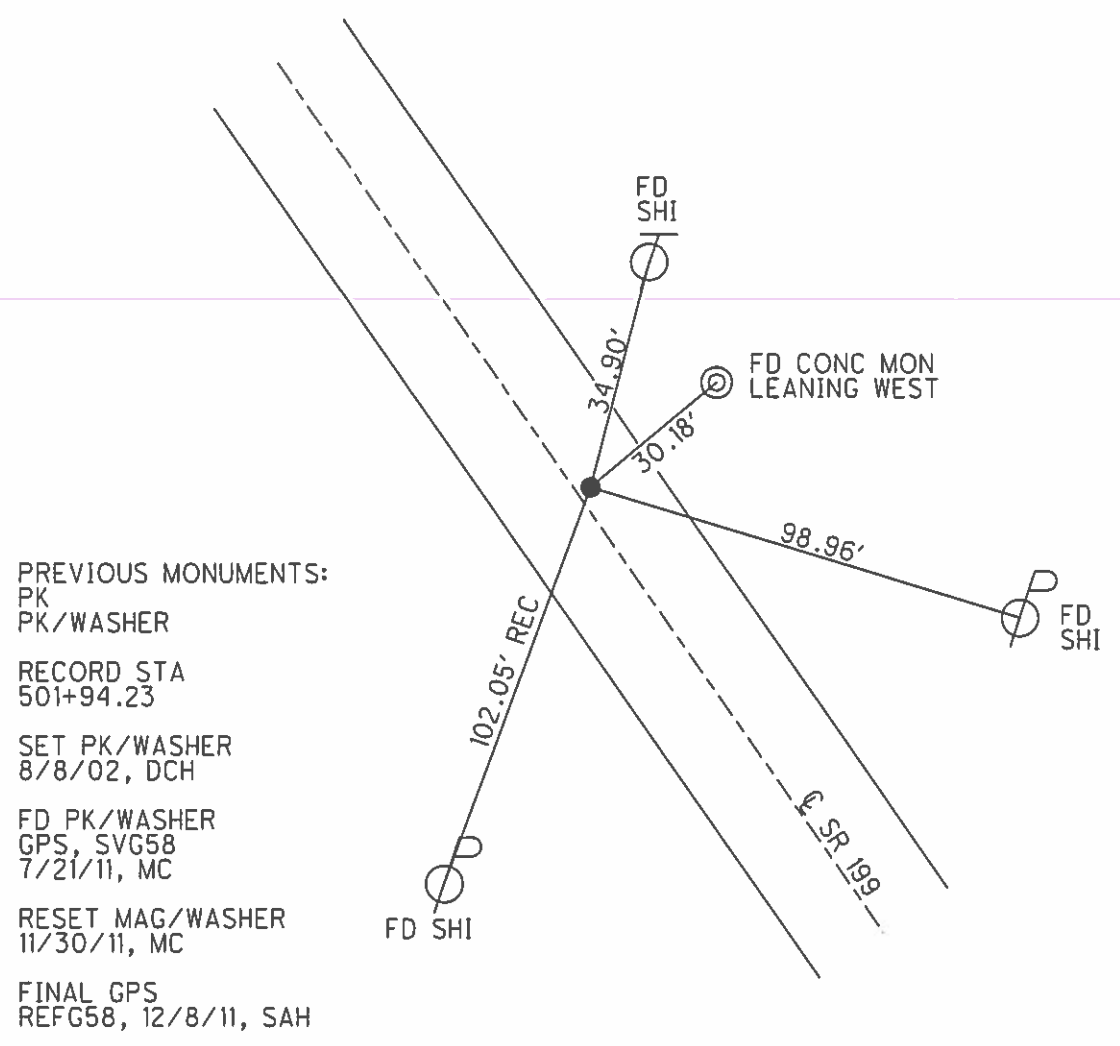
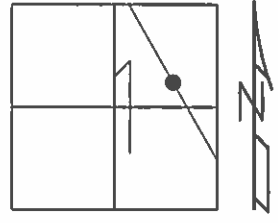


RECORD:
 PREVIOUS MONUMENTS:
 P.K.NAIL
 P.K./WASHER
 STA.501+94.23
 SET P.K./WASHER
 8/8/02, DCH
 FD P.K./WASHER
 SVG58
 7/21/11, MC
 SET MAG/WASHER
 11/30/11, MC
 REFG58
 12/8/11, SAH
 FD MAG/WASHER
 REFD58
 6-19-17, JLL
 SET MAG/WASHER
 5-15-19, JLL

O.D.O.T. DISTRICT 2 SURVEY OFFICE (USE ONLY)

PERSONNEL _____ REFERENCE NO. 58 D SHEET 29 OF 72
 NOTES FINGER DATE 7/21/11 ROUTE SR 199
 H.C. HUSS WEATHER SUNNY COUNTY WOOD
 R.C. CANTERBURY TEMP. 87° TOWNSHIP WEBSTER
 SECTION 1
 T 5 N R 11 E

TYPE MONUMENT PK/WASHER
 ON SURFACE - ~~BELOW~~ ON
~~LEFT - C PAVT~~ - RIGHT 3.2'
7' TO RT EDGE PAVEMENT
 S.L.M. 1063+38
 GRID: NORTHING: 641531.561 EASTING: 1684094.676



PREVIOUS MONUMENTS:
 PK
 PK/WASHER
 RECORD STA
 501+94.23
 SET PK/WASHER
 8/8/02, DCH
 FD PK/WASHER
 GPS, SVG58
 7/21/11, MC
 RESET MAG/WASHER
 11/30/11, MC
 FINAL GPS
 REFG58, 12/8/11, SAH

O.D.O.T. DISTRICT 2 SURVEY OFFICE

PERSONNEL

REFERENCE NO. 58D

SHEET 11 OF 45

NOTES ROUSOS

DATE 4-2-02

ROUTE S.R. 199

H.C. HOMAN

WEATHER CLOUDY

COUNTY WOOD

R.C. ROUSOS

TEMP. 60

TOWNSHIP WEBSTER

SECTION 1

T 5 N R 11 E

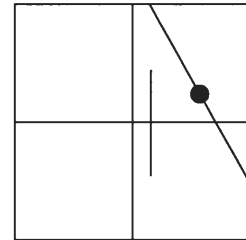
TYPE MONUMENT P.K. & WASHER

ON SURFACE - BELOW YES

~~LEFT~~ - Q PAV'T - RIGHT 3' RT.

6' TO RT. EDGE PAVEMENT

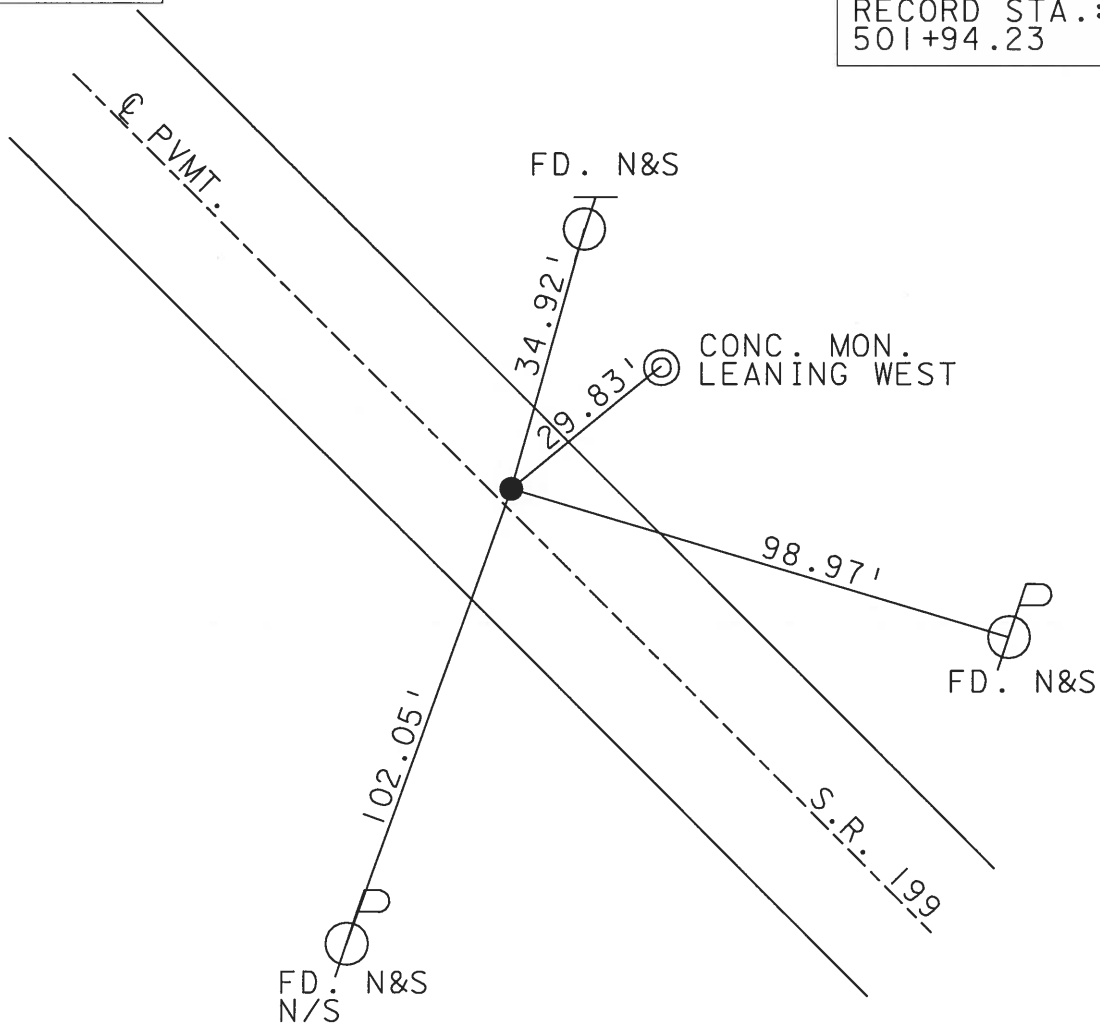
S.L.M. 1063+38



SET PK & WASHER
8-8-02
D.C.H.

PREVIOUS MONUMENTS:
P.K.
PK & WASHER

RECORD STA.:
501+94.23



O.D.O.T. DISTRICT 2 SURVEY OFFICE

PERSONNEL

REFERENCE NO. 58-D SHEET 11 OF 26

NOTES CHENEY

H.C. BARBOUR

R.C. GEYMAN

DATE 11-15-1991

WEATHER CLOUDY

TEMP. 50°

ROUTE 199

COUNTY WOOD

TOWNSHIP WEBSTER

SECTION 1

T 5 N R 11 E

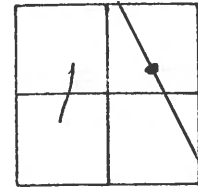
TYPE MONUMENT SET PK/WASHER

ON SURFACE - BELOW

~~LEFT~~ - C PAV'T. - RIGHT 3'

6' TO E. EDGE PAVEMENT

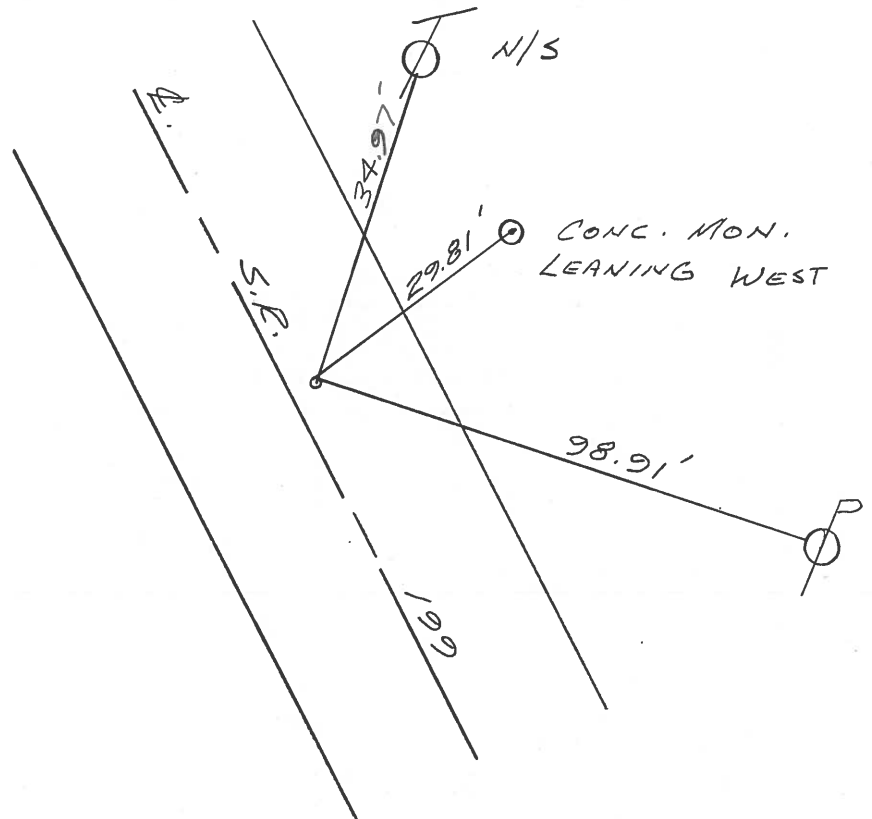
S.L.M. 1061+61



PREVIOUS MONUMENTS:

- P.K.
- PK/WASHER

RECORD STA. 501+94.23



Q.D.O.T. DISTRICT 2 SURVEY OFFICE

SHEET _____ OF _____

County WOOD S.R. 199

Township WEBSTER

Section 1

T5N, R1E

Personnel HOFFMAN

LOEHRKE

HOUSEHOLDER

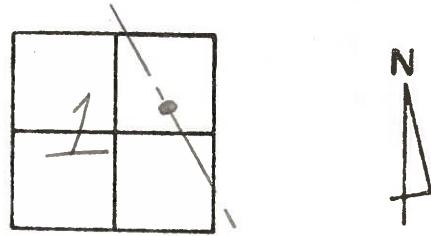
BARNHISEL

#58-D

Date 1-4-83

Weather CLEAR

Temp. +25°

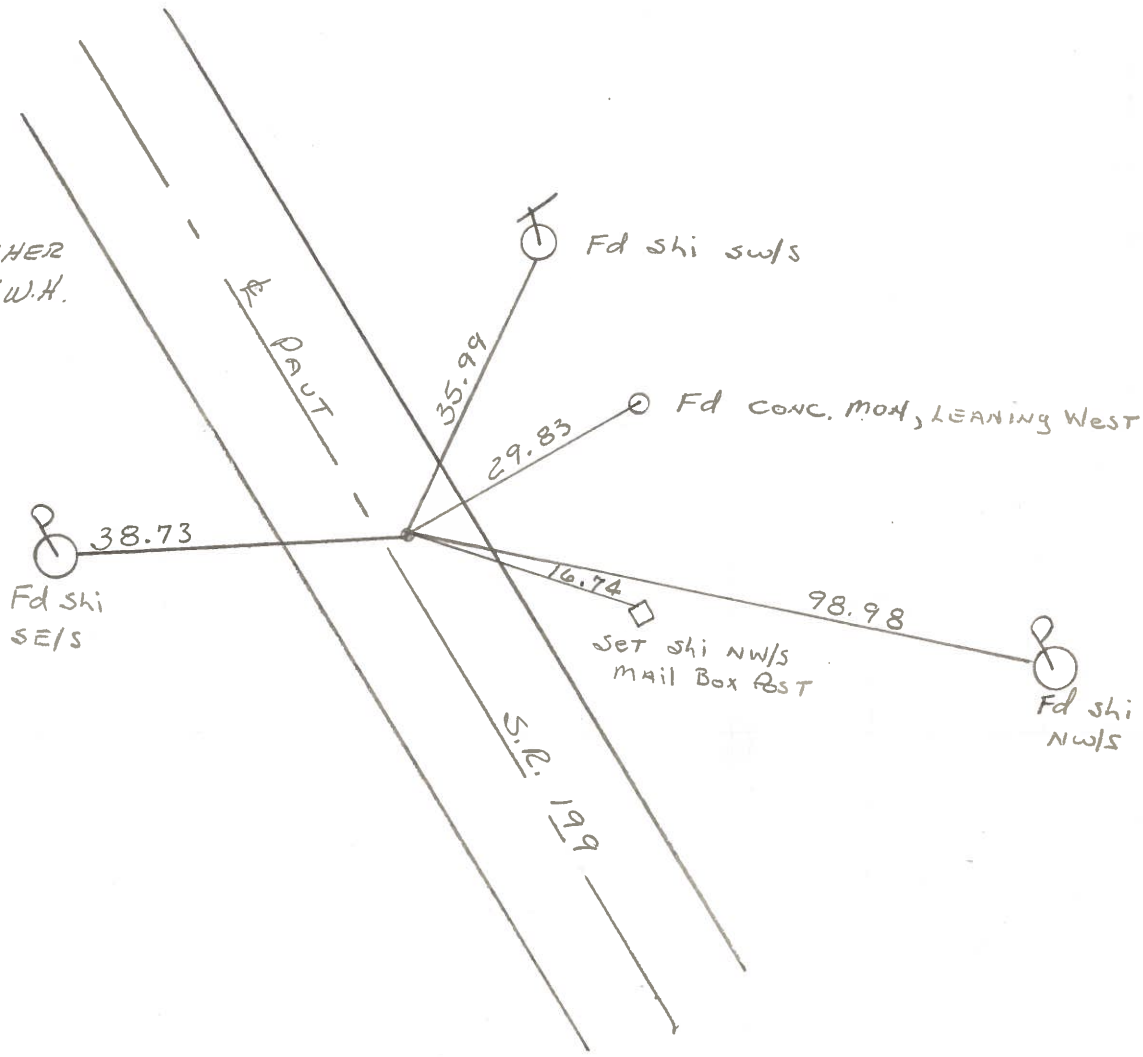


Fd P.K. @ surface
 3.4' RT. of & PAUT
 5.7' TO E.E.P.
 13.0' TO W.E.P.

S.L.M. 1063 + 17

RECORD:
 STA. 501+94.23

SET P.K./WASHER
 7-20-83 S.W.H.



O.D.O.T. DISTRICT 2 SURVEY OFFICE

SHEET _____ OF _____

County WOOD S.R. 199

Township WEBSTER

Section 1

T N, R E

Personnel TOMSIK

NEUSER

VANYO

GRANATA

Date 9-15-71 ^{CHKD} (8-21-73)

Weather _____

Temp. _____

35	36
2	1



POINT IS 2270± S. OF SUGAR RIDGE RD.
(0.43)

#58-D

STA 501+94.23

SHI. 38.76'

SHI. 36.00'

29.79' CONC. R/W MARKER

FD. P.K. NAIL AT SURFACE

98.87'

SHI.

S.R. 199

SHI. 87.74'

SHI. 18" HICKORY

64.72'

#58C

STA. 503+74.81

55.86'

54.42' SHI.

SHI.

FD P.K. NAIL AT SURFACE

POINT IS 2430± S. OF SUGAR RIDGE RD.
(0.46)

PERSONNEL	TITLE	PERSONNEL	TITLE	COUNTY	DATE
Tomsic				WOOD	Sept 15, 1971
Neuser				#199	ckd 8-21-73
Vanyp				S. R.	WEATHER
Granata				SEC.	TEMP.

DESCRIPTION	Ref. Mon.	LEFT	CENTER LINE	RIGHT	JOB NO.
-------------	-----------	------	-------------	-------	---------

