

O.D.O.T. DISTRICT 2 SURVEY OFFICE (USE ONLY)

PERSONNEL

REFERENCE NO. 58 E

SHEET 30 OF 75

NOTES RHOADES DATE 6-19-17  
 H.C. LEU WEATHER CLOUDY  
 R.C. CARSON TEMP. 80°  
POORE

ROUTE SR 199  
 COUNTY WOOD  
 TOWNSHIP WEBSTER  
 SECTION 1

DWG BY AUBLE PID 101221

T 5 N R 11 E

TYPE MONUMENT MAG/WASHER

ON SURFACE - ~~BELOW~~ ON

OFFSET  $\odot$  PAVEMENT 3.8' ~~LT~~ : RT

6.7' TO RT EDGE PAVEMENT

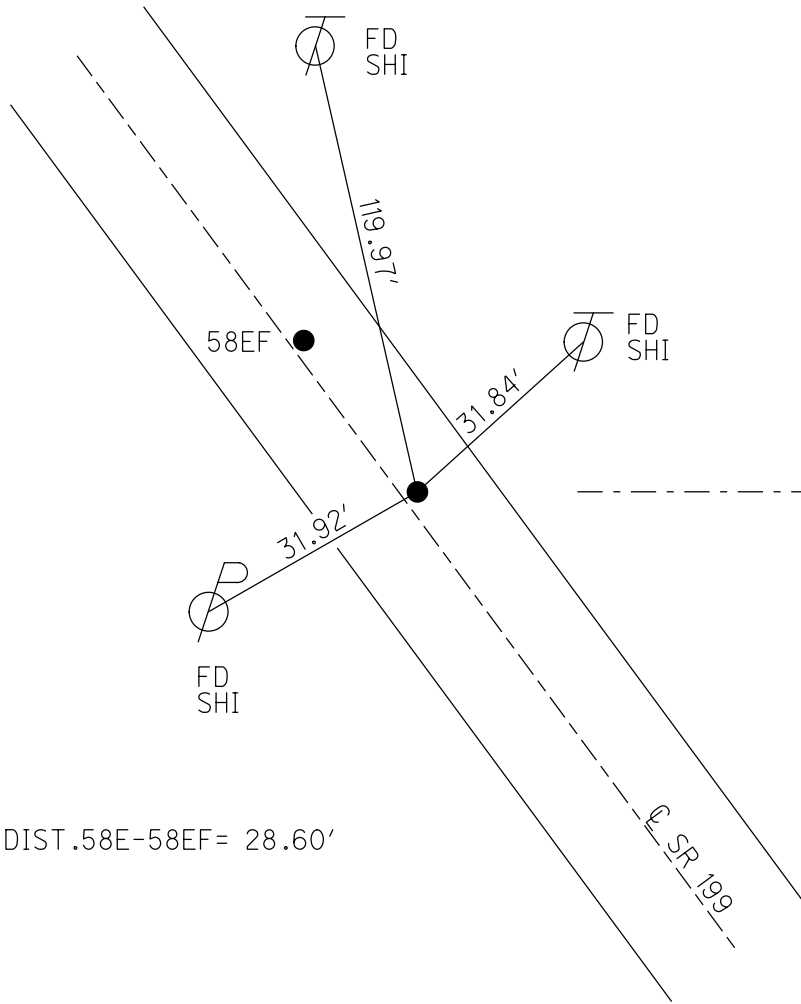
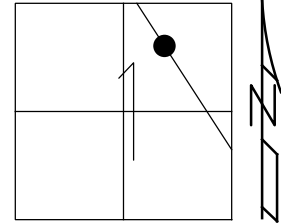
STATION: 1065+04

HORZ.DATUM: NAD83 (2011)

GEOID: 2012A

GRID: NORTHING: 641680.485

EASTING: 1684020.539



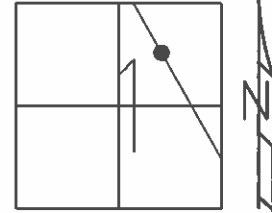
RECORD:  
 PREVIOUS MONUMENTS:  
 P.K./WASHER  
 SM.R.R.SPIKE  
 STA.499+27.81  
 SET P.K./WASHER  
 8/8/02, DCH  
 FD P.K./WASHER  
 SVH58  
 7/21/11, MC  
 SET MAG/WASHER  
 11/30/11, MC  
 REFH58  
 12/8/11, SAH  
 FD MAG/WASHER  
 REF58  
 6-19-17, JLL  
 FD MAG/WASHER  
 1" DOWN  
 5-15-19, JLL

$\odot$

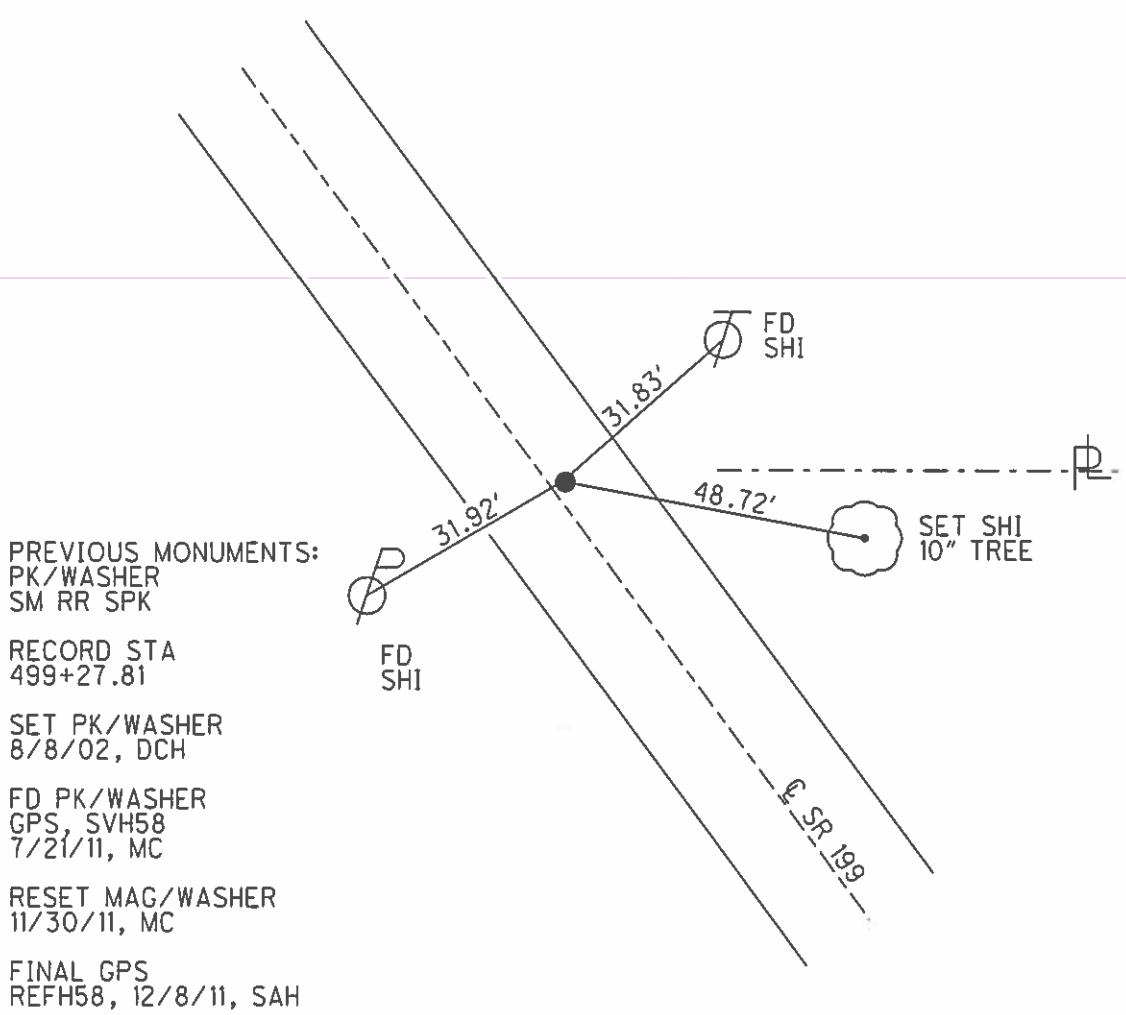
**O.D.O.T. DISTRICT 2 SURVEY OFFICE (USE ONLY)**

PERSONNEL \_\_\_\_\_ REFERENCE NO. 58 E SHEET 30 OF 72  
 NOTES FINGER DATE 7/21/11 ROUTE SR 199  
 H.C. HUSS WEATHER SUNNY COUNTY WOOD  
 R.C. CANTERBURY TEMP. 87° TOWNSHIP WEBSTER  
 \_\_\_\_\_ SECTION 1  
 \_\_\_\_\_ T 5 N R 11 E

TYPE MONUMENT PK/WASHER  
~~ON SURFACE~~ - BELOW 1.5'  
~~LEFT - C PAVT~~ - RIGHT 3.8'  
6.7' TO RT EDGE PAVEMENT  
 S.L.M. 1065+04



GRID: NORTHING: 641680.530 EASTING: 1684020.513



PREVIOUS MONUMENTS:  
 PK/WASHER  
 SM RR SPK  
 RECORD STA  
 499+27.81  
 SET PK/WASHER  
 8/8/02, DCH  
 FD PK/WASHER  
 GPS, SVH58  
 7/21/11, MC  
 RESET MAG/WASHER  
 11/30/11, MC  
 FINAL GPS  
 REFH58, 12/8/11, SAH

O.D.O.T. DISTRICT 2 SURVEY OFFICE

PERSONNEL

REFERENCE NO. 58E

SHEET 12 OF 45

NOTES ROUSOS

DATE 4-2-02

ROUTE S.R. 199

H.C. HOMAN

WEATHER CLOUDY

COUNTY WOOD

R.C. ROUSOS

TEMP. 60

TOWNSHIP WEBSTER

SECTION 1

T 5 N R 11 E

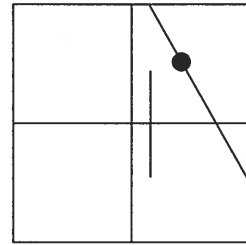
TYPE MONUMENT P.K. & WASHER

~~ON SURFACE~~ - BELOW 1 1/2" DOWN

~~LEFT~~ - Q PAV'T - RIGHT 4' RT.

6' TO RT. EDGE PAVEMENT

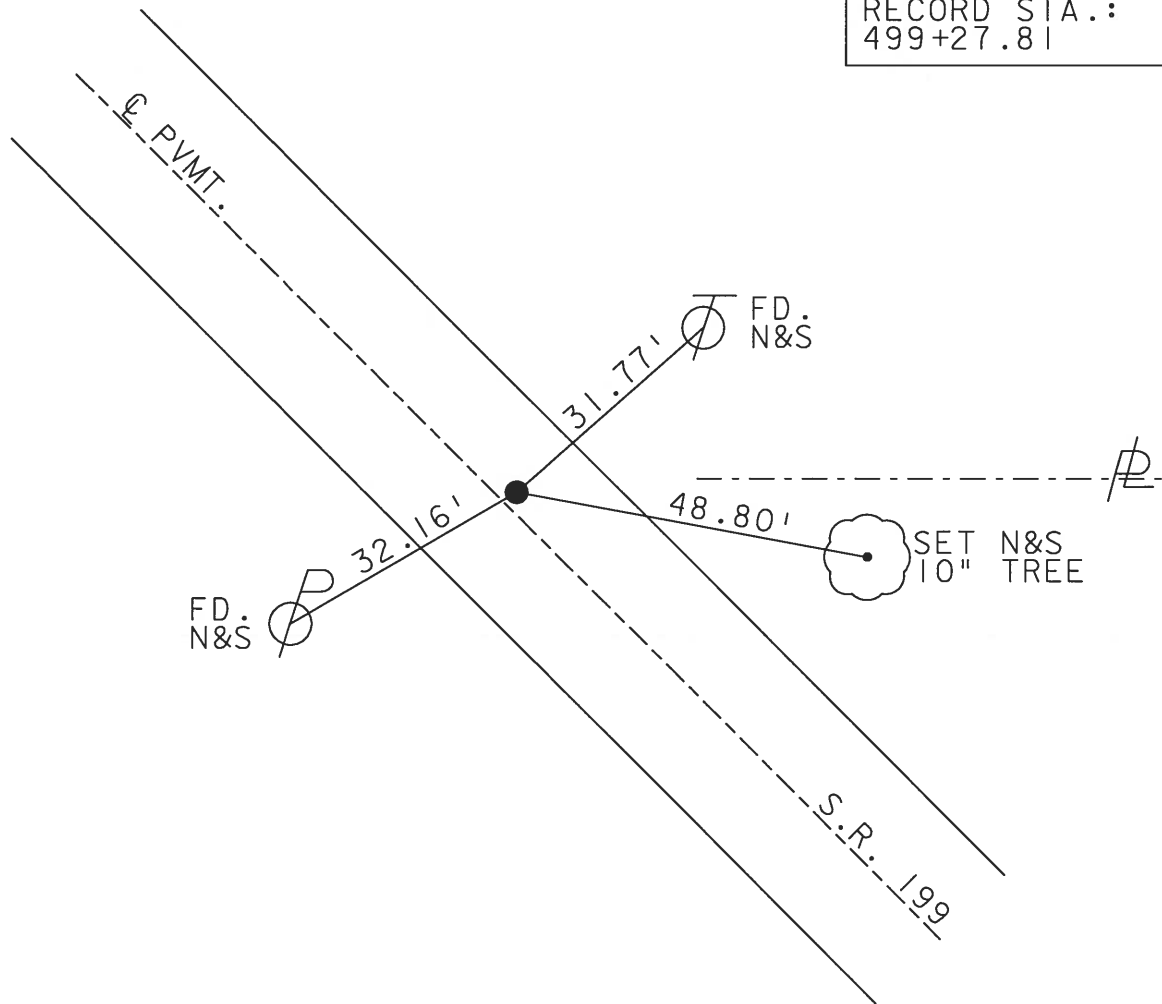
S.L.M. 1065+04



SET PK & WASHER  
8-8-02  
D.C.H.

PREVIOUS MONUMENTS:  
PK & WASHER  
SM RR SPK

RECORD STA.:  
499+27.81



# O.D.O.T. DISTRICT 2 SURVEY OFFICE

PERSONNEL

REFERENCE NO. 58-E

SHEET 12 OF 26

NOTES CHENEY

H.C. BARBOUR

R.C. GEYMAN

DATE 11-15-1991

WEATHER CLOUDY

TEMP. 50°

ROUTE 199

COUNTY WOOD

TOWNSHIP WEBSTER

SECTION 1

T S N R 11 E

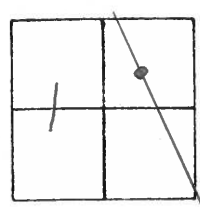
TYPE MONUMENT SET PK/WASHER

ON SURFACE - BELOW \_\_\_\_\_

LEFT - & PAV'T. - RIGHT 4'

6' TO E EDGE PAVEMENT

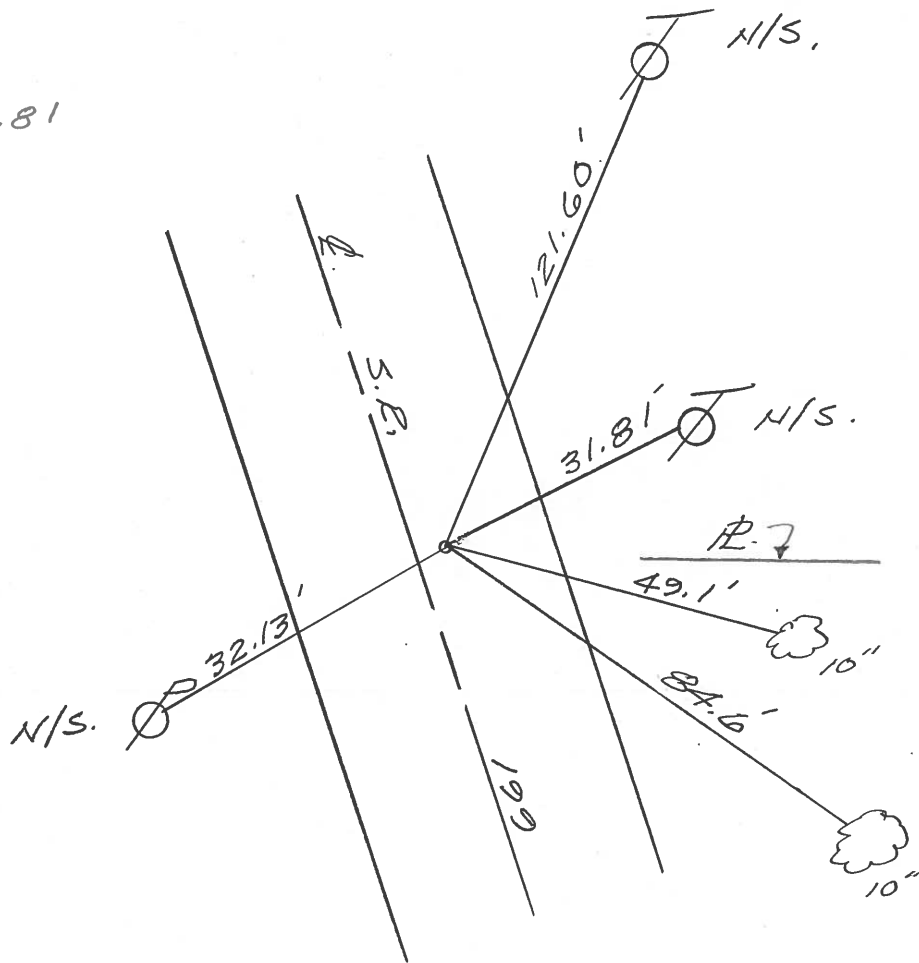
S.L.M. 1063+27



PREVIOUS MONUMENTS:

- PK/WASHER
- SM. RR. SPK.

RECORD STA. 499+27.81



QD.O.T. DISTRICT 2 SURVEY OFFICE

SHEET \_\_\_\_\_ OF \_\_\_\_\_

County WOOD S.R. 199

Township WEBSTER

Section 1

T5N, R11E

Personnel HOFFMAN

LOEHRKE

HOUSEHOLDER

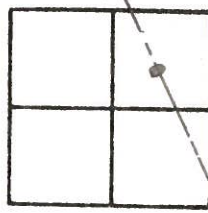
BARNHISEL

#58-E

Date 1-4-83

Weather CLEAR

Temp. +25°



Fd SMALL R.R. SPK. @ SURFACE

S.L.M. 1064+84

4.0' RT. of & PAUT.

5.4' TO E.E.P.

12.8' TO W.E.P.

Record;  
STA. 499+27.81

Fd shi  
SE/S

116.38

SET P.K./WASHER  
7-20-83 S.W.H.

Fd shi NE/S

33.30

Fd shi SW/S

121.60

31.78

Fd shi W/S

49.22

SET shi NW/S  
10"

85.05

SET shi  
NW/S  
10"

& PAUT

S.R. 199

County WOOD S.R. 199

Date 9-16-71 (CHKD 8-21-75)

Township WEBSTER

Weather \_\_\_\_\_

Section 1

Temp. \_\_\_\_\_

T N, R E

Personnel TOM SIC

NEUSER

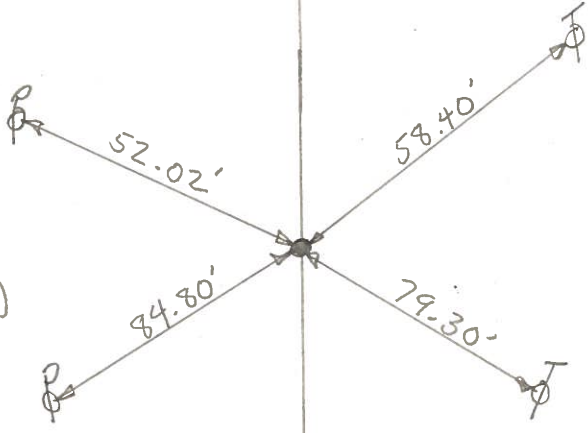
VANYO

GRANATA

35	36
2	1



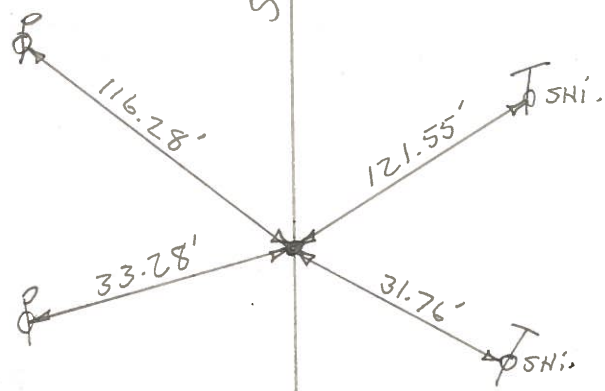
#58-F POINT IS 1320'± SOUTH OF SUGAR RIDGE RD.



SET. P.K. NAIL,  
P.I. STA. 493+18.55  
0°-25' RT. (FIELD)

#58-E

S.R. 199



FD. P.K. NAIL  
STA. 499+27.81'

POINT IS 2100'± SOUTH OF SUGAR RIDGE RD.