

O.D.O.T. DISTRICT 2 SURVEY OFFICE (USE ONLY)

PERSONNEL

REFERENCE NO. 58 EF

SHEET 31 OF 75

NOTES RHOADES

DATE 6-19-17

ROUTE SR 199

H.C. LEU

WEATHER CLOUDY

COUNTY WOOD

R.C. CARSON

TEMP. 80°

TOWNSHIP WEBSTER

POORE

DWG BY AUBLE

PID 101221

SECTION 1

T 5 N R 11 E

TYPE MONUMENT R.R.SPIKE

~~ON SURFACE~~ - BELOW 0.13'

OFFSET \varnothing PAVEMENT 2.5' ~~LT~~ : RT

- TO - EDGE PAVEMENT

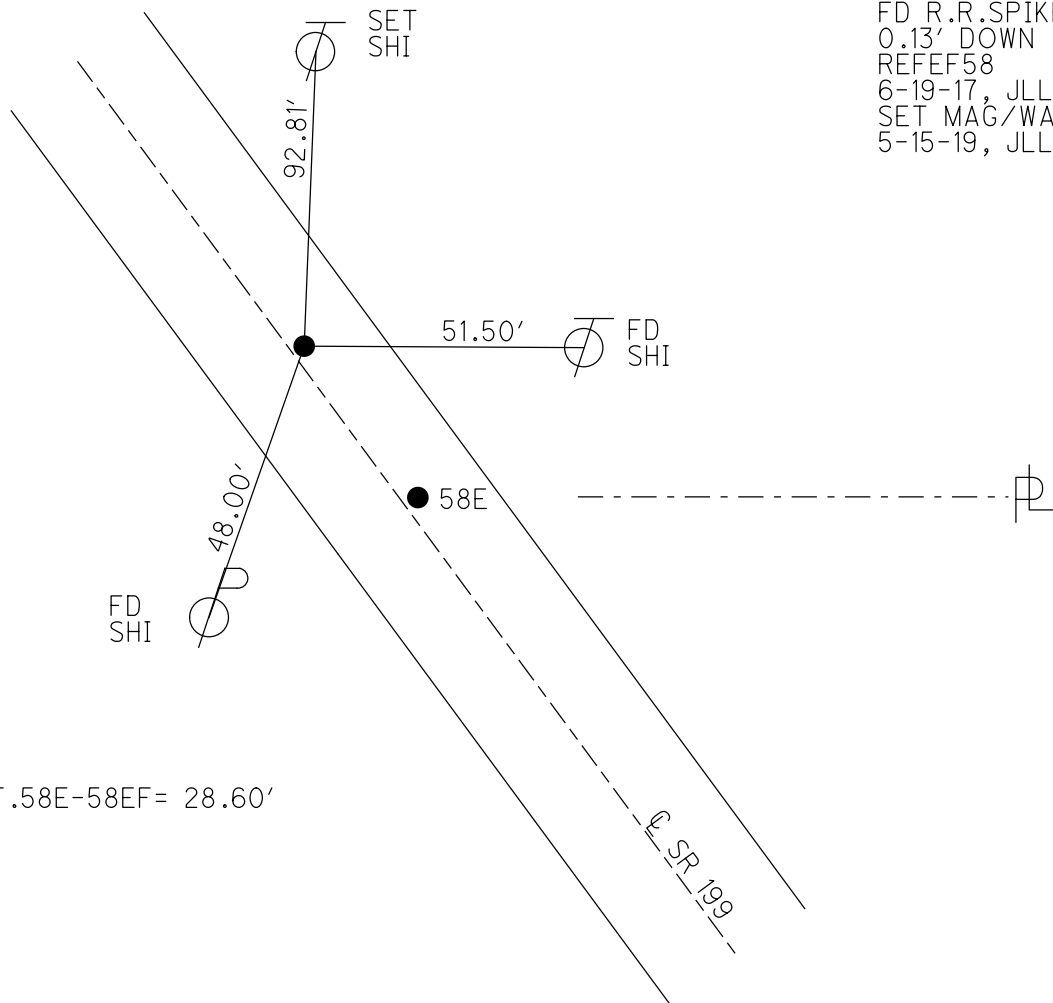
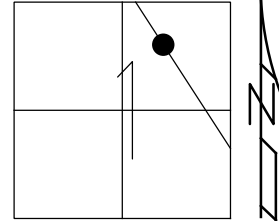
STATION: -

HORZ.DATUM: NAD83 (2011)

GEOID: 2012A

GRID: NORTHING: 641705.537

EASTING: 1684006.748



RECORD:
 FD R.R.SPIKE
 0.13' DOWN
 REFEF58
 6-19-17, JLL
 SET MAG/WASHER
 5-15-19, JLL