

O.D.O.T. DISTRICT 2 SURVEY OFFICE (USE ONLY)

PERSONNEL

REFERENCE NO. 58 F

SHEET 32 OF 75

NOTES RHOADES

DATE 6-19-17

ROUTE SR 199

H.C. LEU

WEATHER CLOUDY

COUNTY WOOD

R.C. CARSON

TEMP. 80°

TOWNSHIP WEBSTER

POORE

SECTION 1

DWG BY AUBLE PID 101221

T 5 N R 11 E

TYPE MONUMENT MAG/WASHER

ON SURFACE - ~~BELOW~~ ON

OFFSET CL PAVEMENT 4.9' LT : RT

5.7' TO E EDGE PAVEMENT

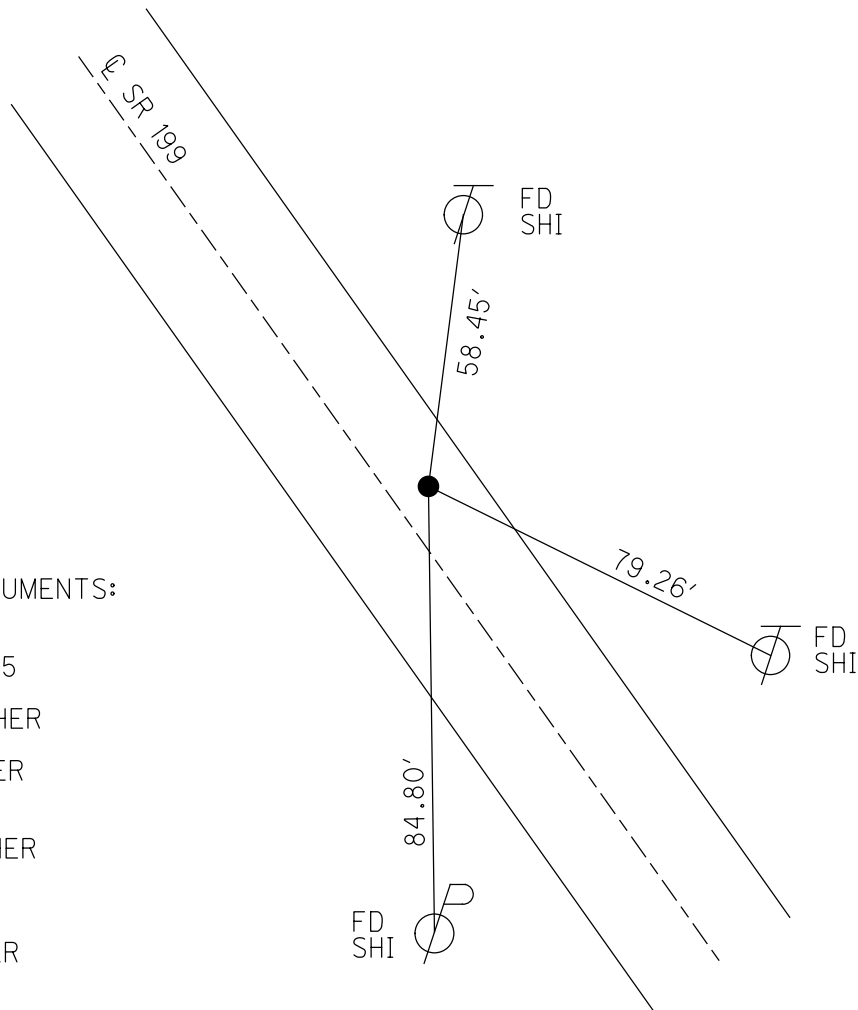
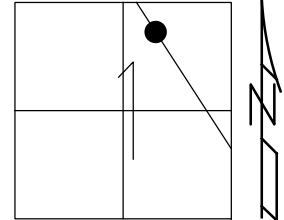
STATION: 1072+13

HORIZ.DATUM: NAD83 (2011)

GEOID: 2012A

GRID: NORTHING: 642315.906

EASTING: 1683705.758

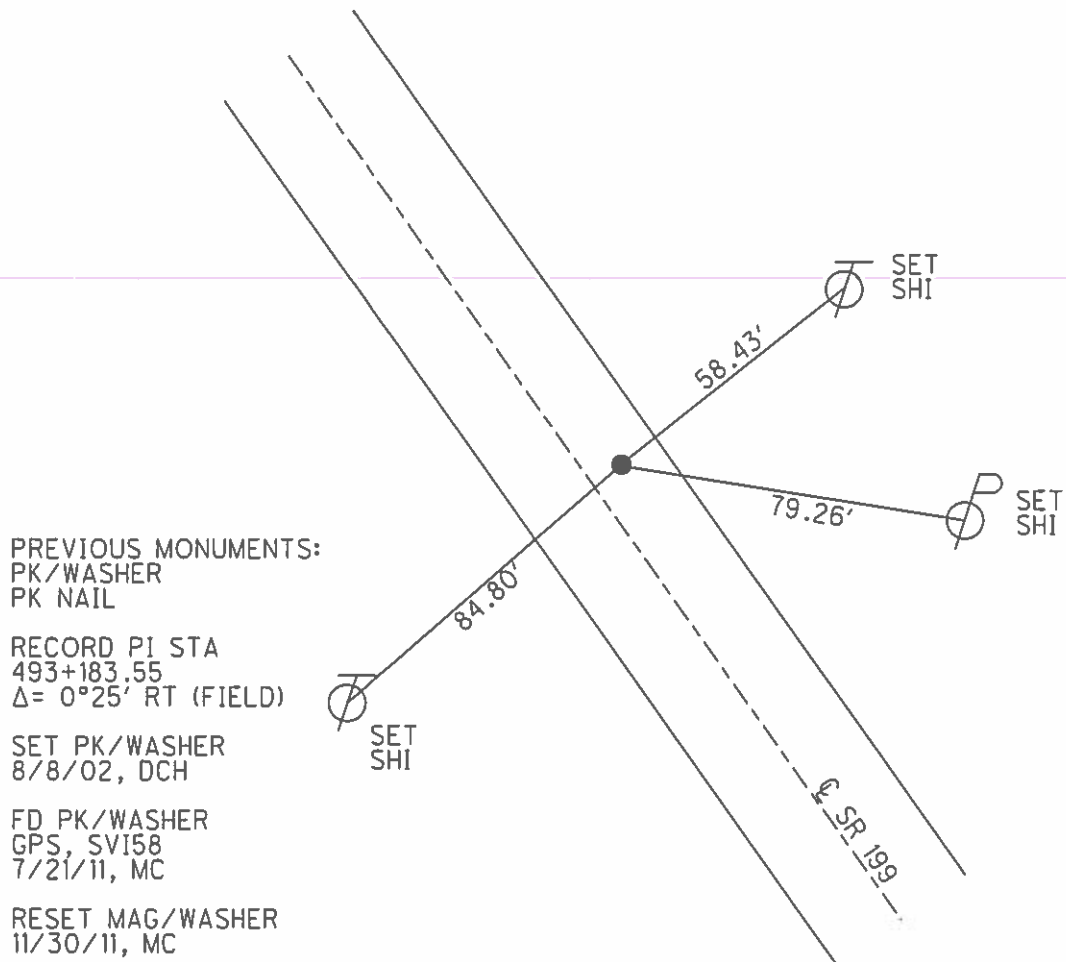
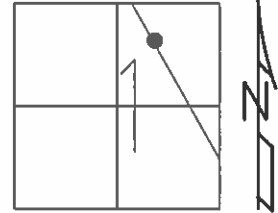


RECORD: P.I.
PREVIOUS MONUMENTS:
P.K./WASHER
P.K.NAIL
STA.493+183.55
 $\Delta = 0^{\circ}25' RT$
SET P.K./WASHER
8/8/02, DCH
FD P.K./WASHER
SVI58
7/21/11, MC
SET MAG/WASHER
11/30/11, MC
REFI58
12/8/11, SAH
FD MAG/WASHER
REFF58
6-19-17
5-24-19, JLL

O.D.O.T. DISTRICT 2 SURVEY OFFICE (USE ONLY)

PERSONNEL _____ REFERENCE NO. 58 F SHEET 31 OF 72
 NOTES _____ FINGER _____ DATE 7/21/11 ROUTE SR 199
 H.C. HUSS WEATHER SUNNY COUNTY WOOD
 R.C. CANTERBURY TEMP. 87° TOWNSHIP WEBSTER
 _____ SECTION 1
 _____ T 5 N R 11 E

TYPE MONUMENT _____ PK/WASHER _____
 ON SURFACE - ~~BELOW~~ _____ ON _____
~~LEFT - C PAVT~~ - RIGHT 4.9'
5.7' TO E EDGE PAVEMENT
 S.L.M. _____ 1072+13
 GRID: NORTHING: 642315.962 EASTING: 1683705.758



PREVIOUS MONUMENTS:
 PK/WASHER
 PK NAIL
 RECORD PI STA
 493+183.55
 $\Delta = 0^\circ 25' \text{ RT (FIELD)}$
 SET PK/WASHER
 8/8/02, DCH
 FD PK/WASHER
 GPS, SVI58
 7/21/11, MC
 RESET MAG/WASHER
 11/30/11, MC
 FINAL GPS
 REF158, 12/8/11, SAH

O.D.O.T. DISTRICT 2 SURVEY OFFICE

PERSONNEL

REFERENCE NO. 58F

SHEET 13 OF 45

NOTES ROUSOS

DATE 4-2-02

ROUTE S.R. 199

H.C. HOMAN

WEATHER CLOUDY

COUNTY WOOD

R.C. ROUSOS

TEMP. 60

TOWNSHIP WEBSTER

SECTION 1

T 5 N R 11 E

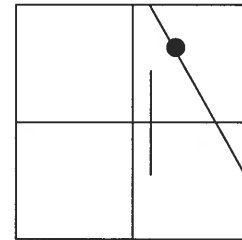
TYPE MONUMENT P.K. & WASHER

ON SURFACE - ~~BELOW~~ ON SURFACE

~~LEFT - Q~~ PAV'T - RIGHT 5' RT.

4.5' TO E EDGE PAVEMENT

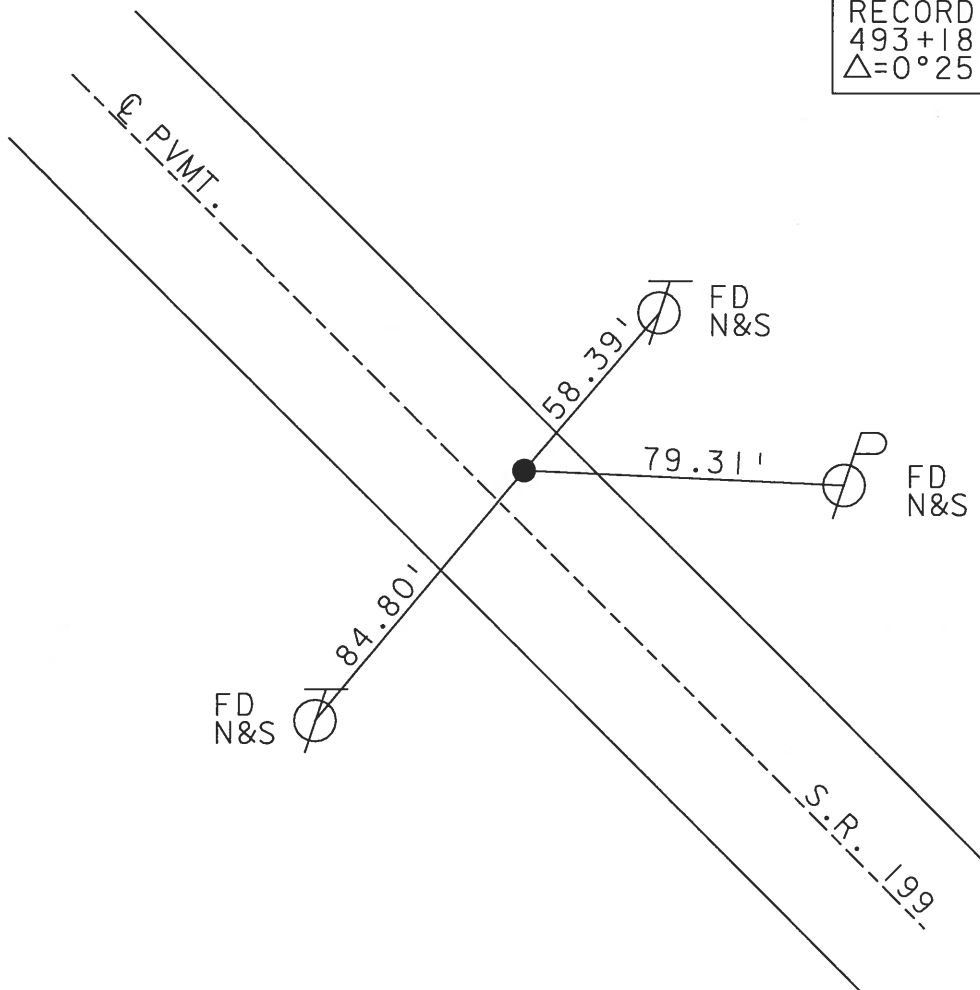
S.L.M. 1072+13



SET PK & WASHER
8-8-02
D.C.H.

PREVIOUS MONUMENTS:
PK & WASHER
PK NAIL

RECORD P.I. STA.:
493+18.55
 $\Delta=0^{\circ}25'$ RT (FIELD)



O.D.O.T. DISTRICT 2 SURVEY OFFICE

PERSONNEL

REFERENCE NO. 58-F

SHEET 13 OF 26

NOTES CHENEY

H.C. BARBOUR

R.C. GEYMAN

DATE 11-15-1991

WEATHER CLOUDY

TEMP. 50°

ROUTE 199

COUNTY WOOD

TOWNSHIP WEBSTER

SECTION 1

T5N R11E

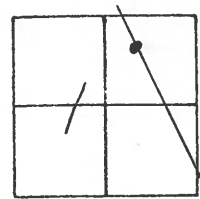
TYPE MONUMENT SET PK/WASHER

ON SURFACE - ~~BELOW~~

~~LEFT~~ & PAV'T. - RIGHT 5'

4.5' TO E EDGE PAVEMENT

S.L.M. 1070+36



PREVIOUS MONUMENTS:

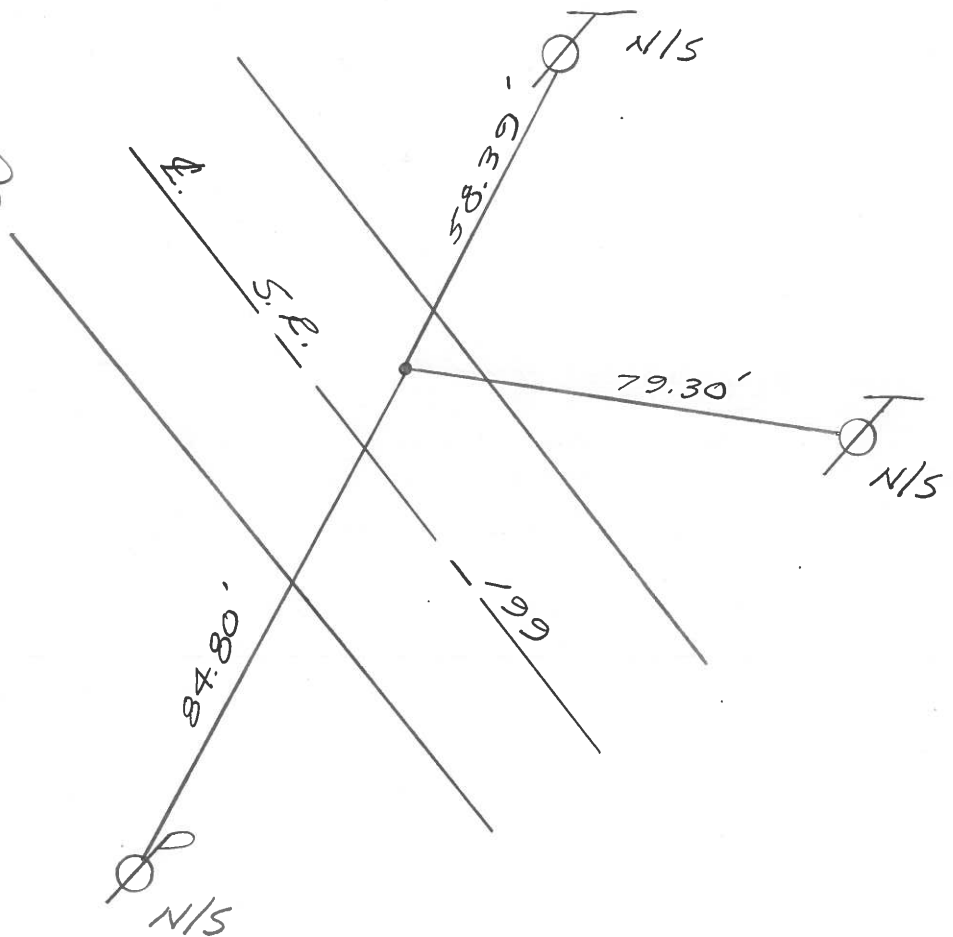
PK/WASHER

PK. NAIL

RECORD:

P.I. STA. 493+18.55

$\Delta = 0^{\circ} - 25' \text{ RT. (FIELD)}$



Q.D.O.T. DISTRICT 2 SURVEY OFFICE

SHEET _____ OF _____

County WOOD S.R. 199

Township WEBSTER

Section 1

T5N, R1E

Personnel HOFFMAN

LOHRKE

HOUSEHOLDER

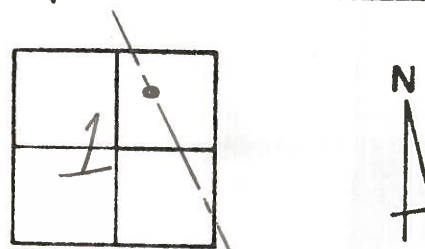
BARNHISEL

#58-F

Date 1-4-83

Weather CLEAR

Temp. +25°



Fd P.K. @ SURFACE

4.8' RT. of & PAUT

4.4' TO E.E.P.

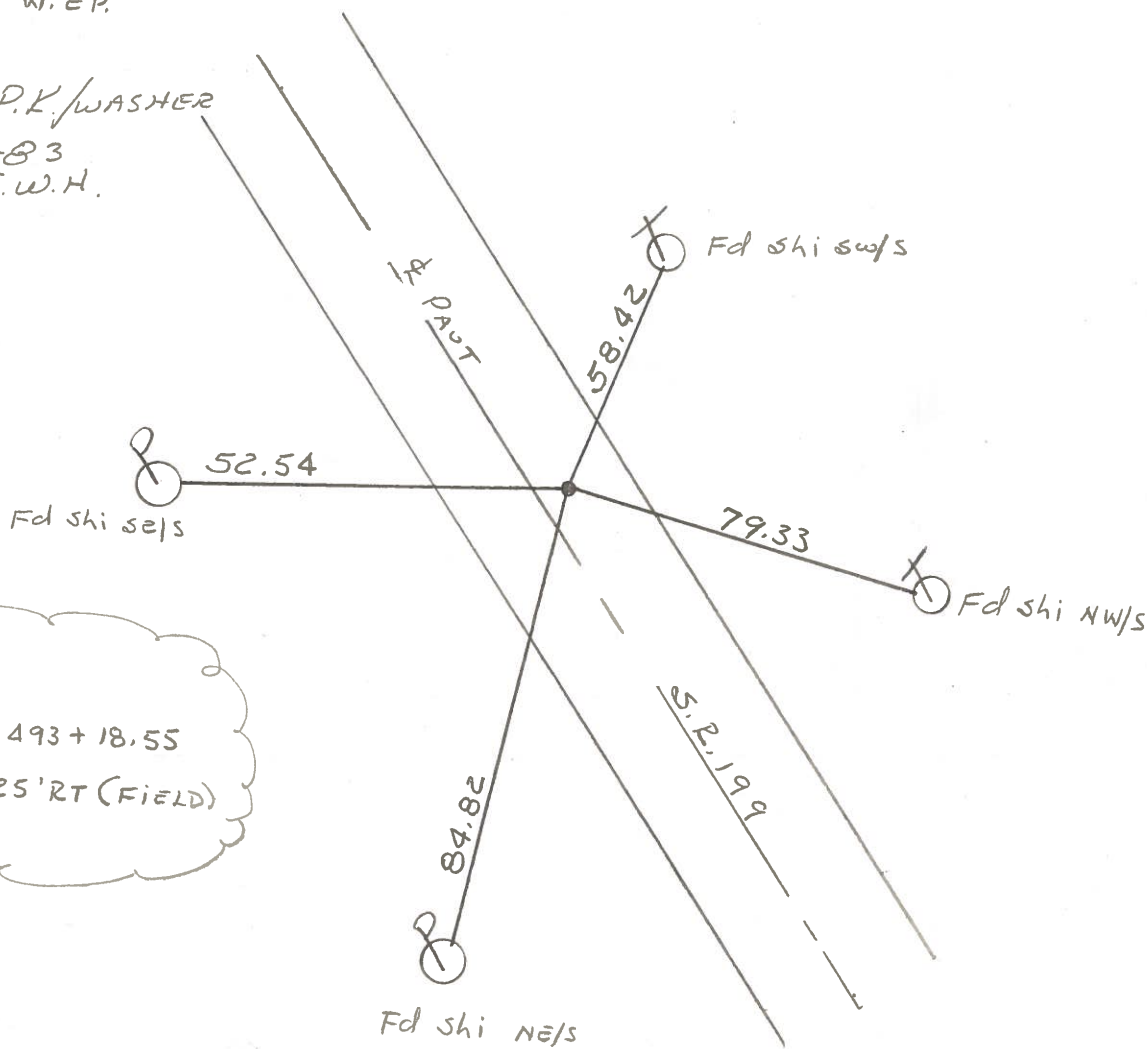
14.2' TO W.E.P.

S.L.M. 1071 + 93

SET P.K./WASHER

7-20-83

S.W.H.



Record:

P.I. STA. 493 + 18.55

$\Delta = 00-25'$ RT (FIELD)

County WOOD S.R. 199

Township WEBSTER

Section 1

T N, R E

Personnel TOM SIK

NEUSER

VANYO

GRANATA

Date 9-16-71 (CHK'D 8-21-75)

Weather _____

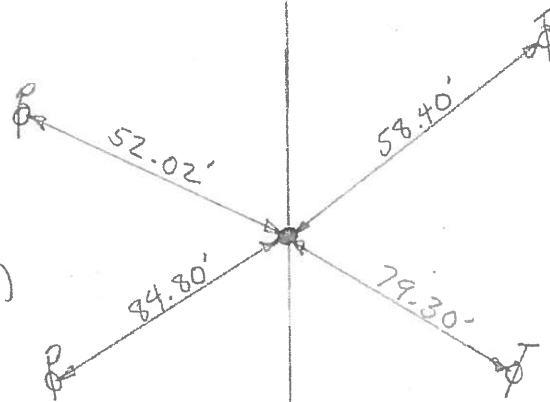
Temp. _____

35	36
2	1



#58-F POINT IS 1320'± SOUTH OF SUGAR RIDGE RD.

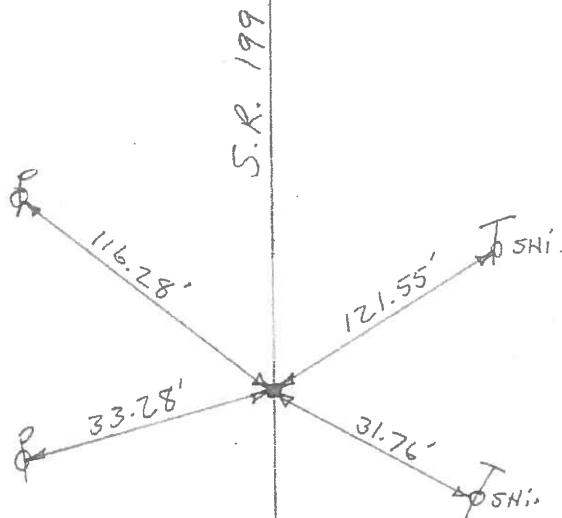
SET. P.K. NAIL.
P.I. STA. 493+18.55
0°-25' RT. (FIELD)



#58-E

FD. P.K. NAIL
STA. 499+27.81'

POINT IS 2100'± SOUTH OF SUGAR RIDGE RD.



COPIED

PERSONNEL	TITLE	PERSONNEL	TITLE
TOMSIK			
NEUSER			
VANYO			
GRANATA			

COUNTY	WOOD	DATE	Sept-16-71
S. R.	199	WEATHER	OKD. 8-21-73
SEC.		TEMP.	

DESCRIPTION	LEFT	CENTER LINE	RIGHT	JOB NO.
-------------	------	-------------	-------	---------

