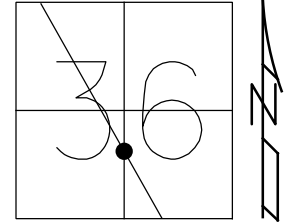


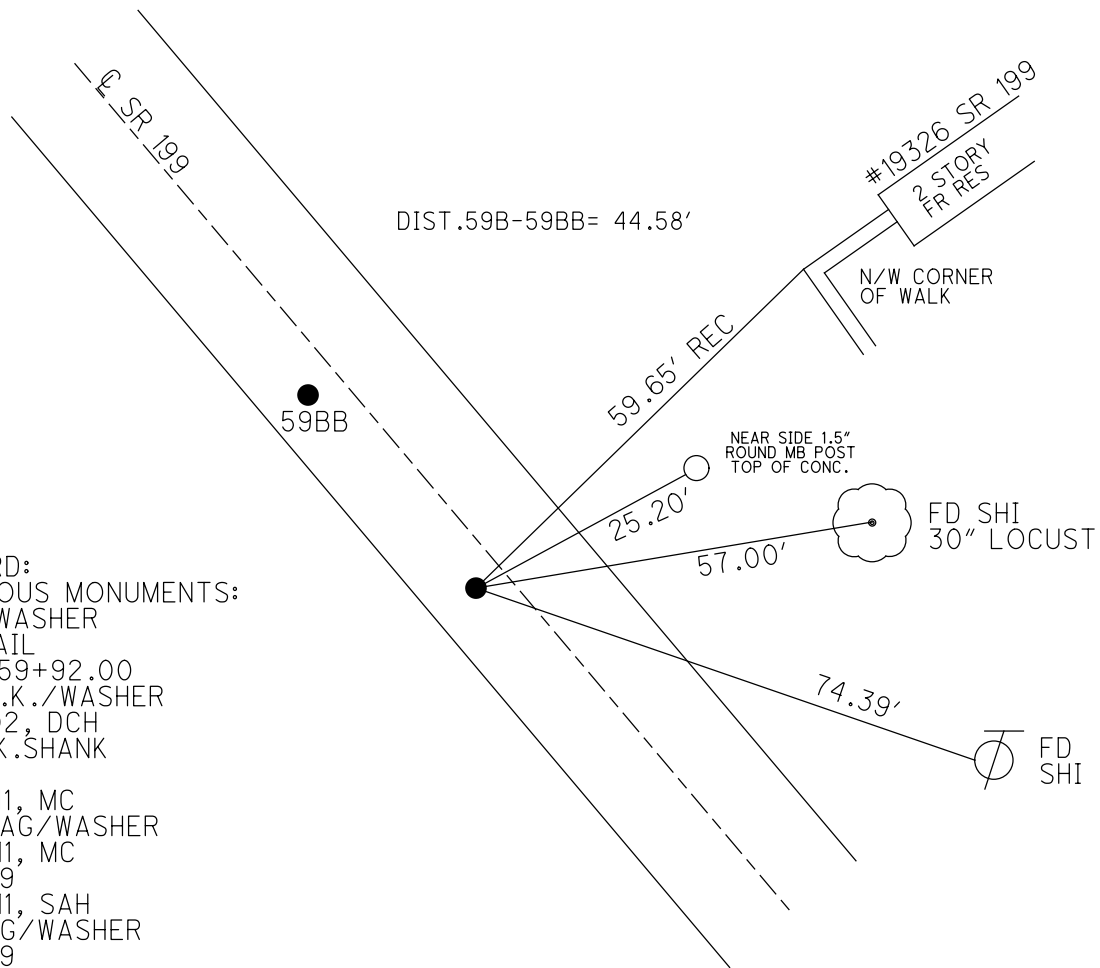
O.D.O.T. DISTRICT 2 SURVEY OFFICE (USE ONLY)

PERSONNEL _____ REFERENCE NO. 59 B SHEET 35 OF 75
 NOTES FARKAS DATE 9-22-17 ROUTE SR 199
 H.C. LEU WEATHER SUNNY COUNTY WOOD
 R.C. FARKAS TEMP. 88° TOWNSHIP WEBSTER
 SECTION 36
 DWG BY AUBLE PID 101221 T 6 N R 11 E

TYPE MONUMENT MAG/WASHER
 ON SURFACE - ~~BELOW~~ ON
 OFFSET Q PAVEMENT 2.4' LT : ~~RT~~
7.7' TO LT EDGE PAVEMENT
 STATION: 1105+07



HORZ.DATUM: NAD83 (2011) GEOID: 2012A
 GRID: NORTHING: 645259.333 EASTING: 1682231.707

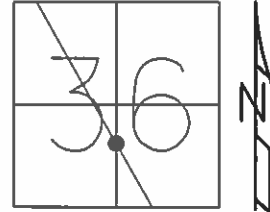


RECORD:
 PREVIOUS MONUMENTS:
 P.K./WASHER
 P.K.NAIL
 STA.459+92.00
 SET P.K./WASHER
 8/8/02, DCH
 FD P.K.SHANK
 SVB59
 7/21/11, MC
 SET MAG/WASHER
 12/6/11, MC
 REFB59
 12/9/11, SAH
 FD MAG/WASHER
 REFB59
 9/22/17
 5-21-19, JLL

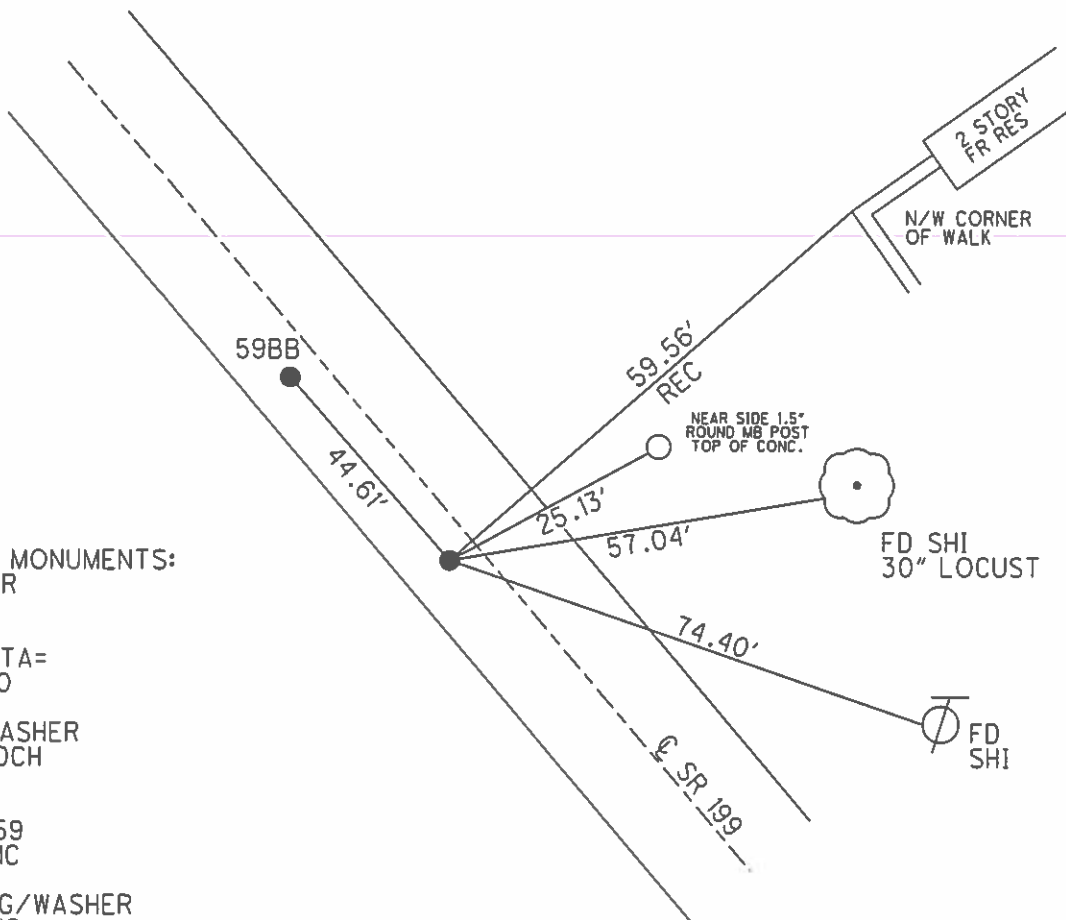
O.D.O.T. DISTRICT 2 SURVEY OFFICE (USE ONLY)

PERSONNEL _____ REFERENCE NO. 59 B SHEET 34 OF 72
 NOTES FINGER DATE 7/21/11 ROUTE SR 199
 H.C. HUSS WEATHER SUNNY COUNTY WOOD
 R.C. CANTERBURY TEMP. 100° TOWNSHIP WEBSTER
 SECTION 36
T 6 N R 11 E

TYPE MONUMENT PK/WASHER
~~ON SURFACE~~ - BELOW 1.5"
 LEFT - ~~C PAVT~~ - RIGHT 2.4'
7.7' TO LT. EDGE PAVEMENT
 S.L.M. 1105+07



GRID: NORTHING: 645259.404 EASTING: 1682231.668



PREVIOUS MONUMENTS:
 PK/WASHER
 PK NAIL

RECORD STA=
 459+92.00

SET PK/WASHER
 8/8/02, DCH

FD SHANK
 GPS, SVB59
 7/21/11, MC

RESET MAG/WASHER
 12/6/11, MC

FINAL GPS
 REFB59, 12/9/11, SAH

O.D.O.T. DISTRICT 2 SURVEY OFFICE

PERSONNEL

REFERENCE NO. 59B

SHEET 16 OF 45

NOTES ROUSOS

DATE 4-2-02

ROUTE S.R. 199

H.C. HOMAN

WEATHER CLOUDY

COUNTY WOOD

R.C. ROUSOS

TEMP. 60

TOWNSHIP WEBSTER

SECTION 36

T 6 N R 11 E

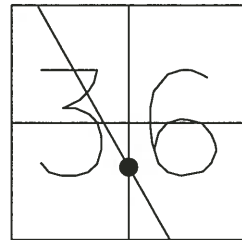
TYPE MONUMENT P.K. & WASHER

~~ON SURFACE~~ - BELOW 1.5" DOWN BOTH

~~LEFT - C PAV'T - RIGHT~~ 2.5' BOTH

7.5' TO W EDGE PAVEMENT

S.L.M. A=1105+07 B=1105+51



PREVIOUS MONUMENTS "A": **59B**

PK / WASHER

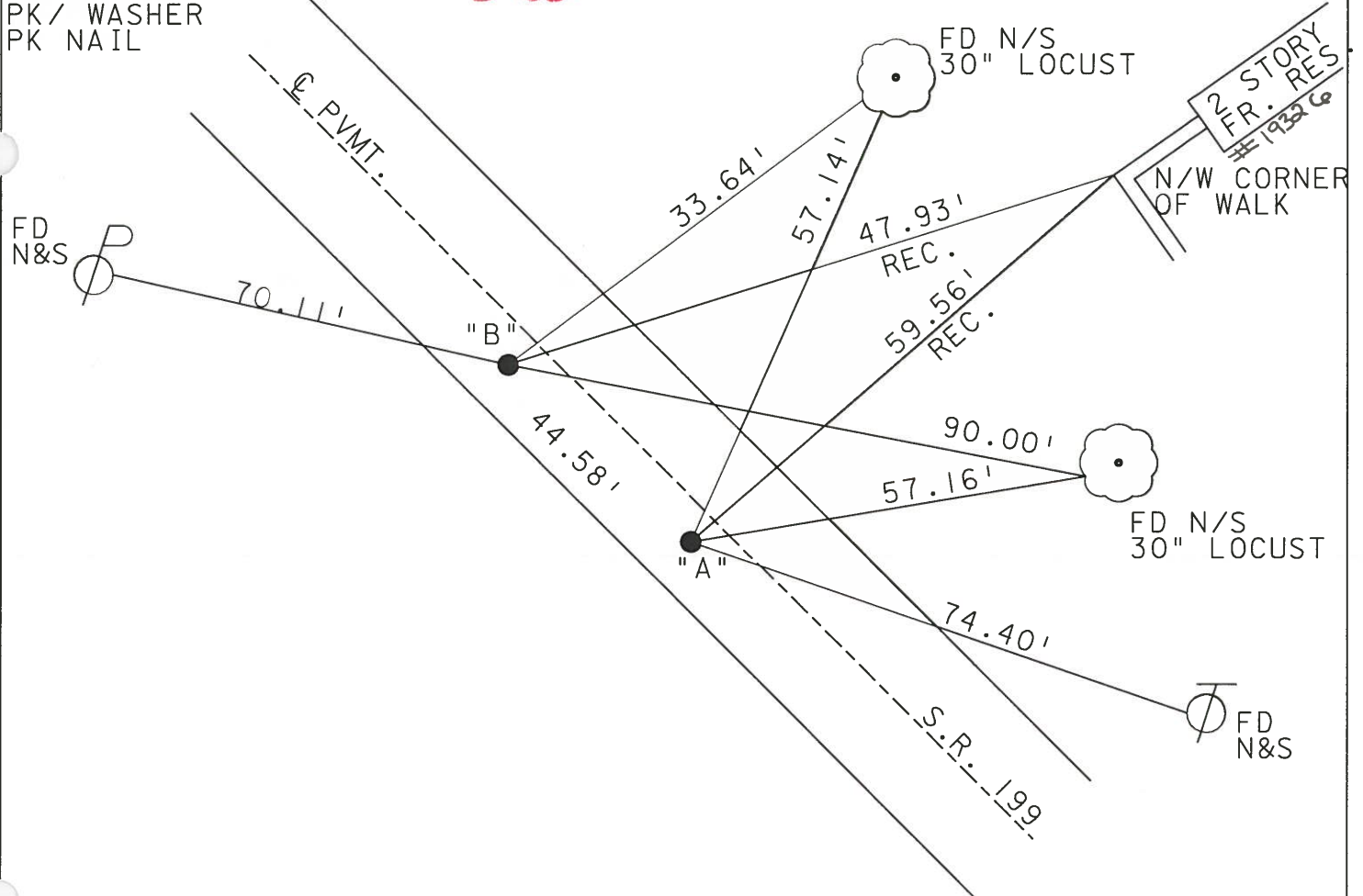
PK NAIL

PREVIOUS MONUMENTS "B": **59BB**

PK / WASHER

PK NAIL

SET PK NAIL &
WASHERS 8-8-02
D.C.H.



RECORD STA. "A"
460+36.56
RECORD STA "B"
459+92.00

O.D.O.T. DISTRICT 2 SURVEY OFFICE

PERSONNEL

REFERENCE NO. 59-B SHEET 16 OF 26

NOTES CHENEY

H.C. BARBOUR

R.C. GEYMAN

DATE 12-13-1991

WEATHER CLOUDY

TEMP. 50°

ROUTE 199

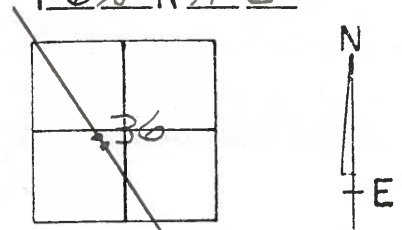
COUNTY WOOD

TOWNSHIP WEBSTER

SECTION 36

T. 6 N R. 1 E

TYPE MONUMENT PK/WASHER
 ON SURFACE - BELOW
 LEFT- & PAV'T. - RIGHT 2.5' & BOTH 3
7.5 TO W EDGE PAVEMENT & BOTH 3
 S.L.M. A=1103+30, B=1103+74



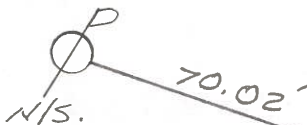
Pt. "B"

PREVIOUS MONUMENTS:

PK/WASHER

P.K. NAIL

RECORD STA.
459+92.00



59BB

Pt. "A"

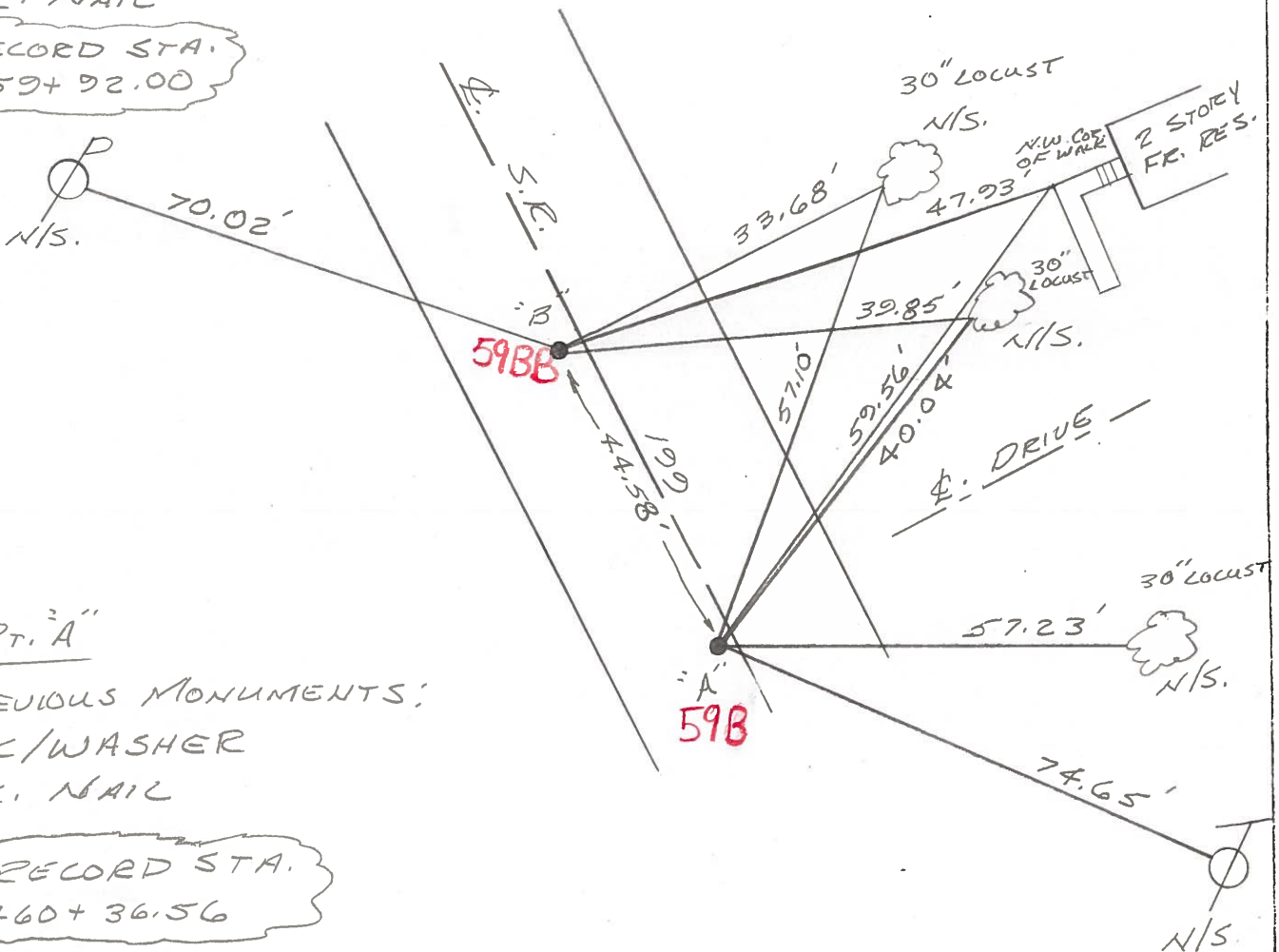
PREVIOUS MONUMENTS:

PK/WASHER

P.K. NAIL

RECORD STA.
460+36.56

59B



QD.O.T. DISTRICT 2 SURVEY OFFICE

SHEET _____ OF _____

County WOOD S.R. 199

Township WEBSTER

Section 36

T6N, R11E

Personnel HOFFMAN

LOZHRKE

HOUSE HOLDER

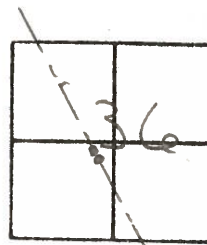
BARNHISEL

#59-B

Date 1-4-83

Weather CLEAR - WINDY

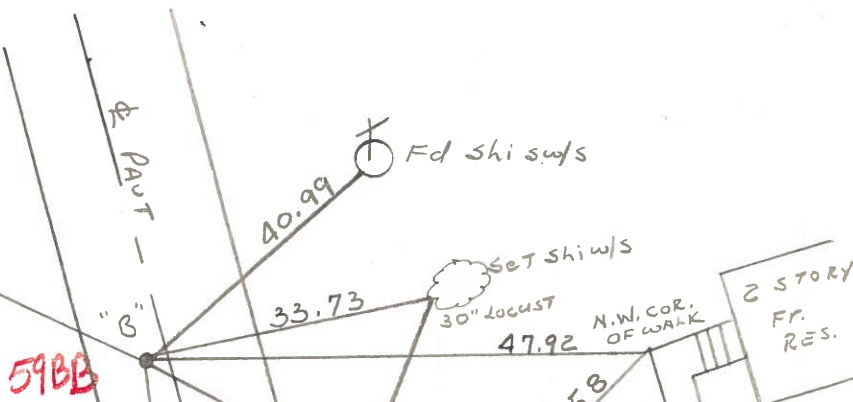
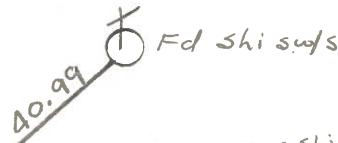
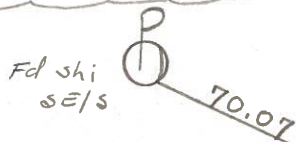
Temp. +30°



PT. "B" = Fd P.K. @ surface
 2.3' LT. of & PAUT
 6.3' TO W.E.P.
 11.5' TO E.E.P.

S.I.M. = 1105 + 30

Record:
 P.I. STA. 459+92.00



SET P.K./WASHER
 7-20-83 S.W.H.

PT "A" = Fd P.K. @ surface

Record:
 STA. 460+36.56



County WOOD S.R. 199

Date 9-15-71 (CHKD. 8-22-73)

Township WEBSTER

Weather _____

Section 36

Temp. _____

T N, R E

Personnel TOMASIC

NEUSER

GRANATA

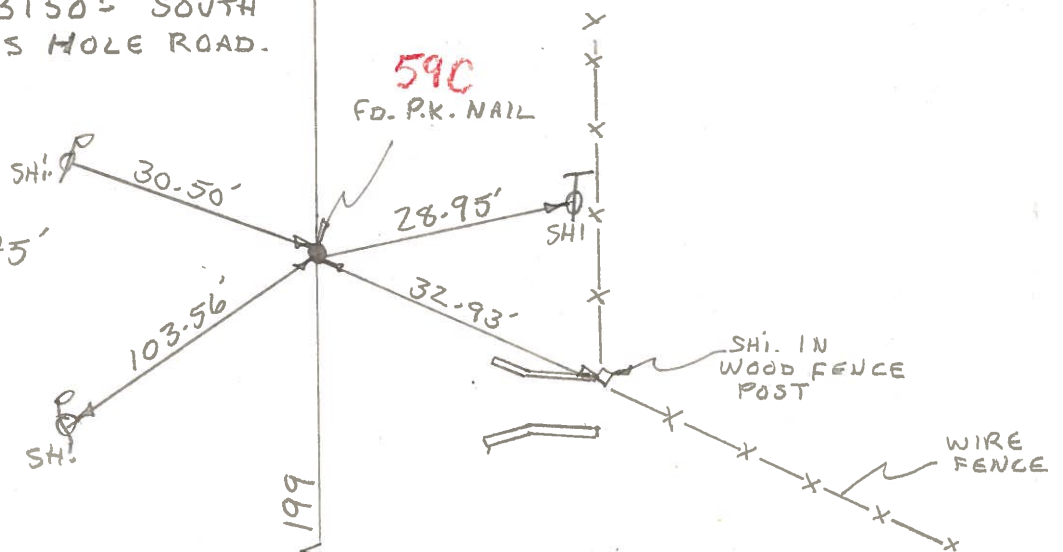
VANYO

26	25
35	36



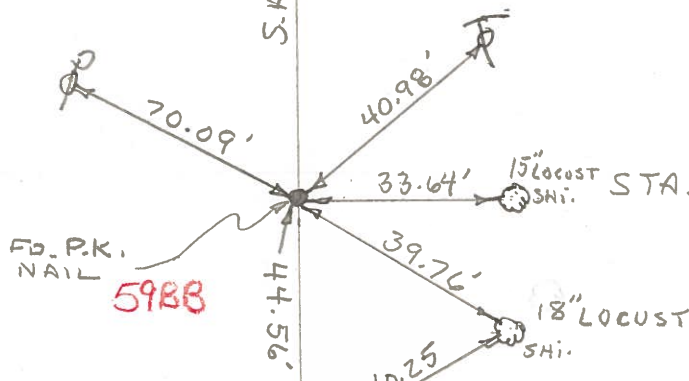
59-A POINT IS 3150± SOUTH OF DEVILS HOLE ROAD.

STA. 451+81.45'



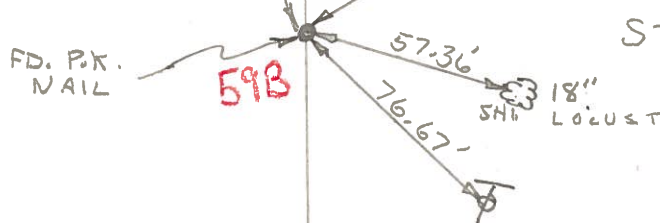
199
S.R.

P.I. - STA. 459+92.00



95.47
S.R.

STA. 460+36.56



POINTS ARE 2480± N. OF SUGAR RIDGE RD.

COPIED

PERSONNEL	TITLE	PERSONNEL	TITLE	COUNTY	DATE
Tomsic				WOOD	Nov. 4, 1971
Neuser				# 199	ckd 8-22-73
Vano				S. R.	WEATHER
Granata				SEC.	TEMP. 40°

DESCRIPTION Ref. Mon. LEFT CENTER LINE RIGHT JOB NO.

