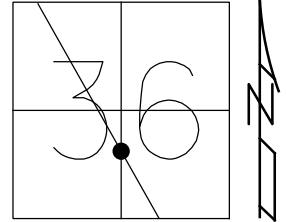


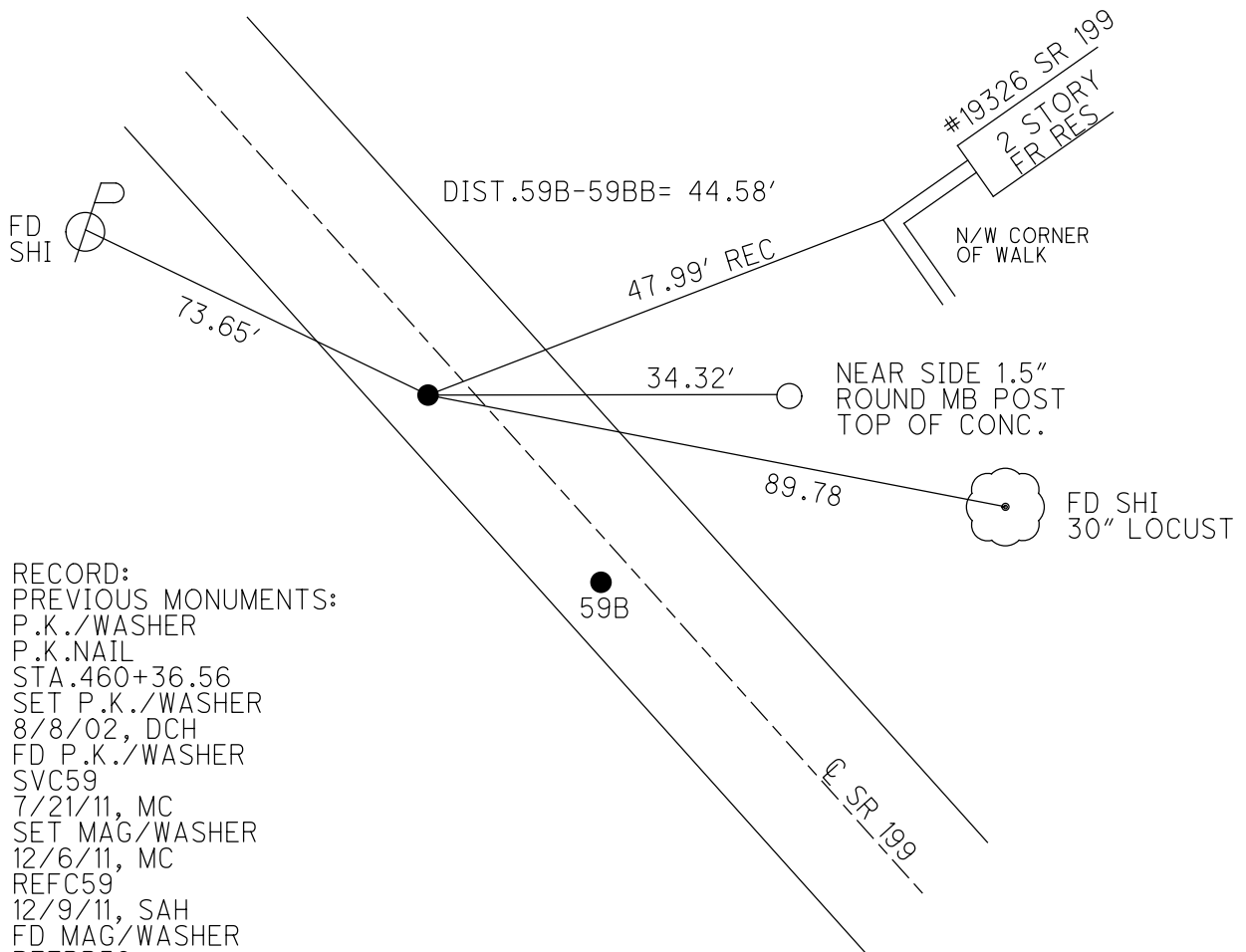
O.D.O.T. DISTRICT 2 SURVEY OFFICE (USE ONLY)

PERSONNEL _____ REFERENCE NO. 59 BB SHEET 36 OF 75
 NOTES FARKAS DATE 9-22-17 ROUTE SR 199
 H.C. LEU WEATHER SUNNY COUNTY WOOD
 R.C. FARKAS TEMP. 88° TOWNSHIP WEBSTER
 _____ SECTION 36
 DWG BY AUBLE PID 101221 T 6 N R 11 E

TYPE MONUMENT MAG/WASHER
 ON SURFACE - ~~BELOW~~ ON
 OFFSET 7.6' TO LT EDGE PAVEMENT
 STATION: 1105+51



HORIZ.DATUM: NAD83 (2011) GEOID: 2012A
 GRID: NORTHING: 645299.269 EASTING: 1682211.734

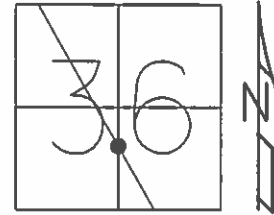


RECORD:
 PREVIOUS MONUMENTS:
 P.K./WASHER
 P.K.NAIL
 STA.460+36.56
 SET P.K./WASHER
 8/8/02, DCH
 FD P.K./WASHER
 SVC59
 7/21/11, MC
 SET MAG/WASHER
 12/6/11, MC
 REFC59
 12/9/11, SAH
 FD MAG/WASHER
 REFBB59
 9/22/17
 5-24-19, JLL

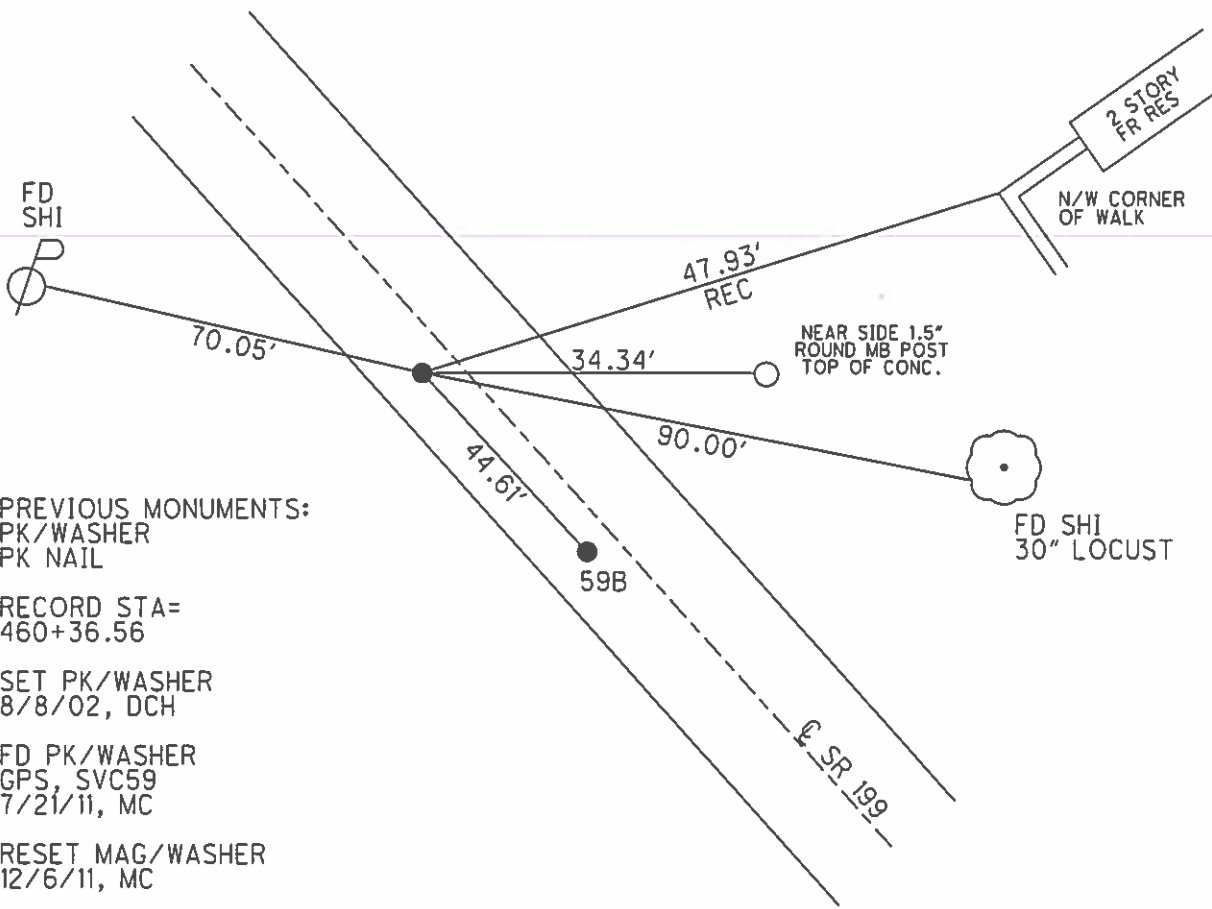
O.D.O.T. DISTRICT 2 SURVEY OFFICE (USE ONLY)

PERSONNEL _____ REFERENCE NO. 59 BB SHEET 35 OF 72
 NOTES FINGER DATE 7/21/11 ROUTE SR 199
 H.C. HUSS WEATHER SUNNY COUNTY WOOD
 R.C. CANTERBURY TEMP. 100° TOWNSHIP WEBSTER
 _____ SECTION 36
 _____ T 6 N R 11 E

TYPE MONUMENT PK/WASHER
~~ON SURFACE~~ - BELOW 1.5"
 LEFT - ~~C PAV'T~~ - RIGHT 2.7'
7.6' TO LT EDGE PAVEMENT
 S.L.M. 1105+51



GRID: NORTHING: 645299.277 EASTING: 1682211.710



PREVIOUS MONUMENTS:
 PK/WASHER
 PK NAIL

RECORD STA=
 460+36.56

SET PK/WASHER
 8/8/02, DCH

FD PK/WASHER
 GPS, SVC59
 7/21/11, MC

RESET MAG/WASHER
 12/6/11, MC

FINAL GPS
 REFC59, 12/9/11, SAH

O.D.O.T. DISTRICT 2 SURVEY OFFICE

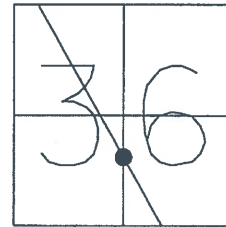
PERSONNEL

NOTES _____ ROUSOS _____
 H.C. _____ HOMAN _____
 R.C. _____ ROUSOS _____

REFERENCE NO. 59B
 DATE 4-2-02
 WEATHER CLOUDY
 TEMP. 60

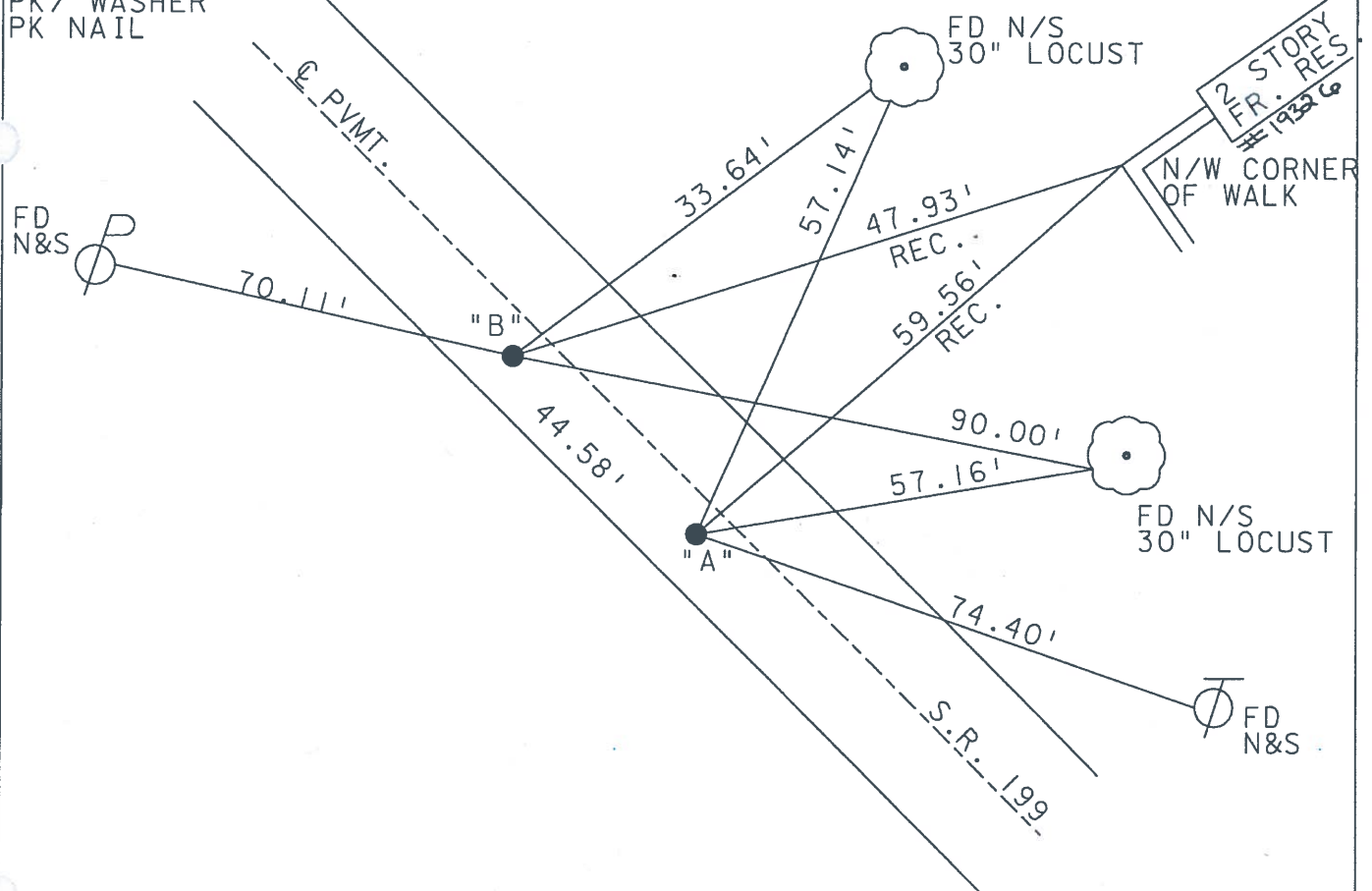
SHEET 16 OF 45
 ROUTE S.R. 199
 COUNTY WOOD
 TOWNSHIP WEBSTER
 SECTION 36
T 6 N R 11 E

TYPE MONUMENT P.K. & WASHER
~~ON SURFACE - BELOW~~ 1.5" DOWN BOTH
~~LEFT - & PART - RIGHT~~ 2.5' BOTH
7.5' TO W EDGE PAVEMENT
 S.L.M. A=1105+07 B=1105+51



PREVIOUS MONUMENTS "A": **598**
 PK / WASHER
 PK NAIL
 PREVIOUS MONUMENTS "B": **598B**
 PK / WASHER
 PK NAIL

SET PK NAIL &
 WASHERS 8-8-02
 D.C.H.



RECORD STA. "A"
 460+36.56
 RECORD STA "B"
 459+92.00

O.D.O.T. DISTRICT 2 SURVEY OFFICE

PERSONNEL

REFERENCE NO. 59-B SHEET 16 OF 26

NOTES CHENEY

H.C. BARBOUR

R.C. GEYMAN

DATE 12-13-1991

WEATHER CLOUDY

TEMP. 50°

ROUTE 199

COUNTY WOOD

TOWNSHIP WEBSTER

SECTION 36

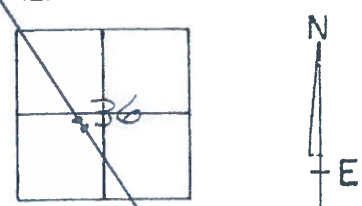
T. 6 N R. 11 E

TYPE MONUMENT PK/WASHER

ON SURFACE - BELOW

LEFT - C PAV'T. - RIGHT 2.5' E BOTH
7.5 TO W EDGE PAVEMENT E BOTH

S.L.M. A=1103+30, B=1103+74



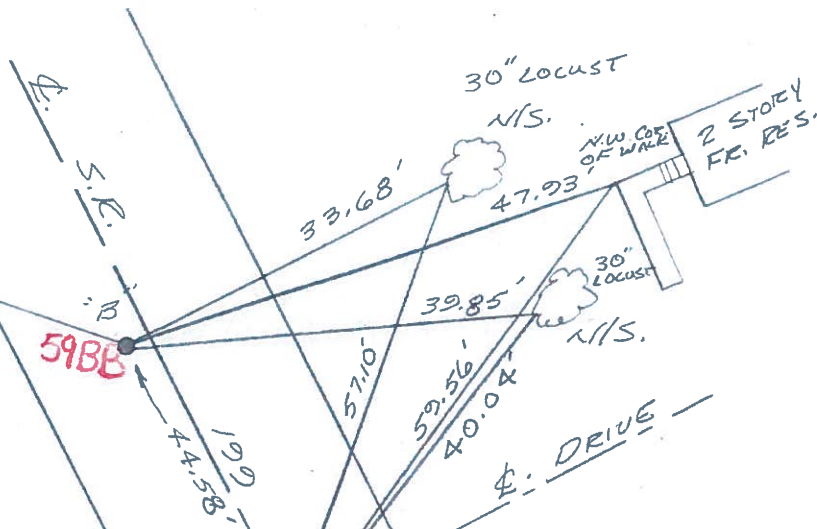
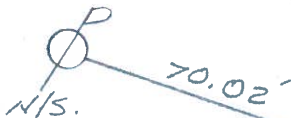
Pt. 'B'

PREVIOUS MONUMENTS:

PK/WASHER

P.K. NAIL

RECORD STA.
459+92.00



Pt. 'A'

PREVIOUS MONUMENTS:

PK/WASHER

P.K. NAIL

RECORD STA.
460+36.56



Q.D.O.T. DISTRICT 2 SURVEY OFFICE

SHEET _____ OF _____

County Wood S.R. 199

Date 1-4-83

Township WEBSTER

Weather CLEAR - WINDY

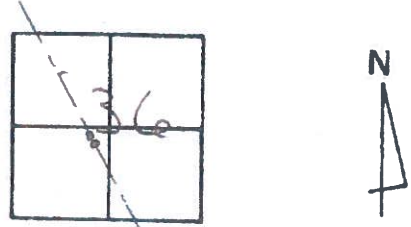
Section 36

Temp. +30°

T6N, R11E

Personnel HOFFMAN
LOEBKE
HOUSE HOLDER
BARNHISEL

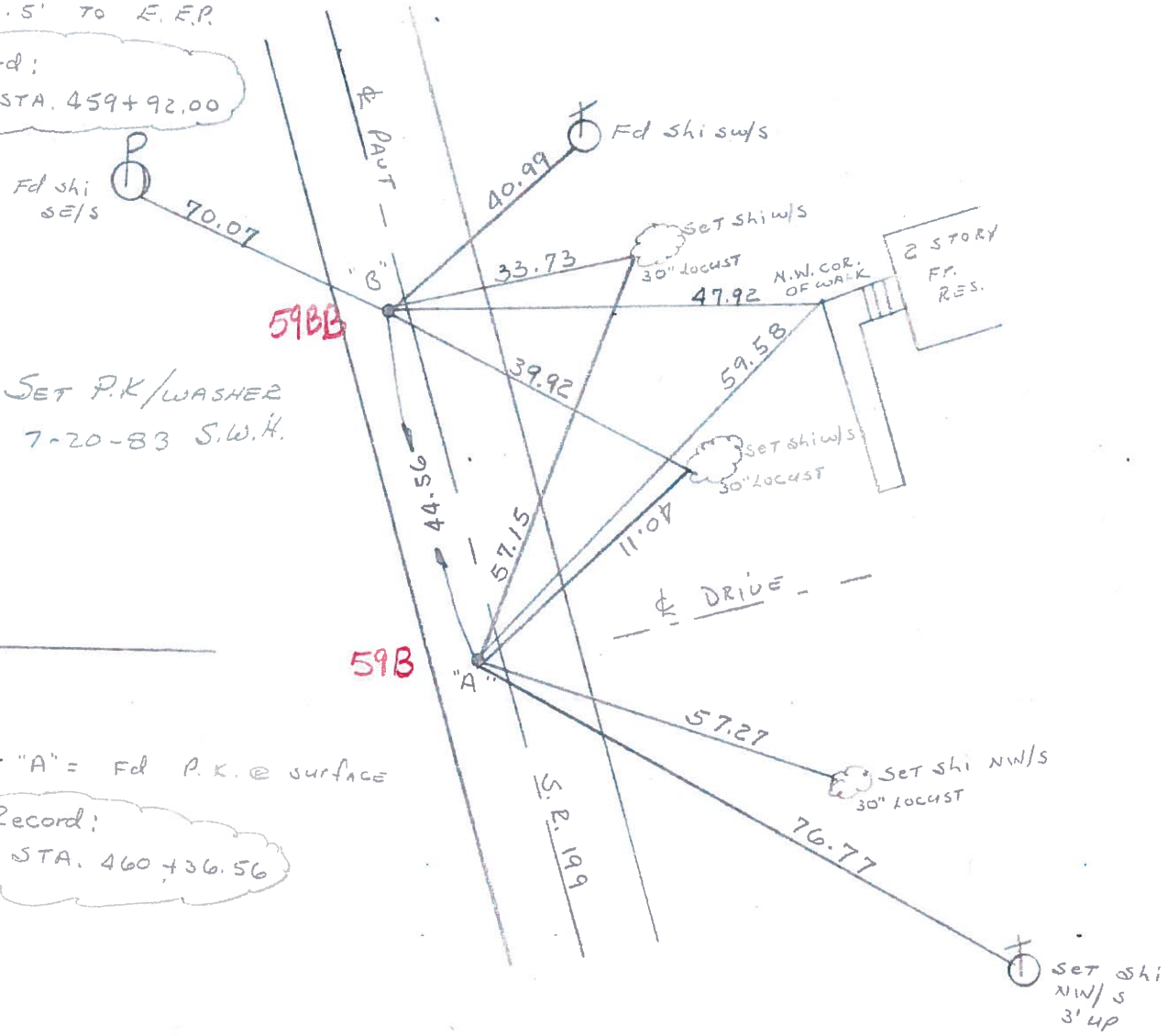
#59-B



PT. "B" = Fd P.K. @ surface
 2.3' RT. of & PAUT
 6.3' TO W.E.P.
 11.5' TO E.E.P.

S.L.M. = 1105 + 30

Record:
 P.I. STA. 459+92.00



SET P.K./WASHER
 7-20-83 S.W.H.

PT "A" = Fd P.K. @ surface

Record:
 STA. 460+36.56

O.D.O.T. DISTRICT 2 SURVEY OFFICE

SHEET _____ OF _____

County WOOD S.R. 199

Date 9-15-71 (CHKD. 8-22-73)

Township WEBSTER

Weather _____

Section 36

Temp. _____

T N, R E

Personnel TOMSIK

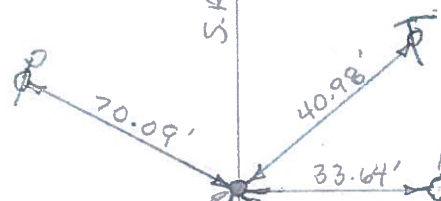
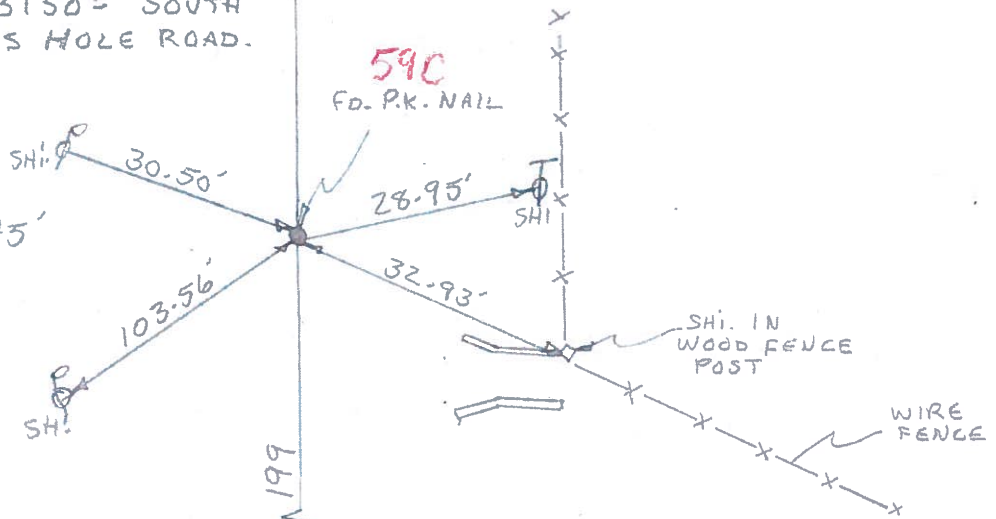
26	25
35	36



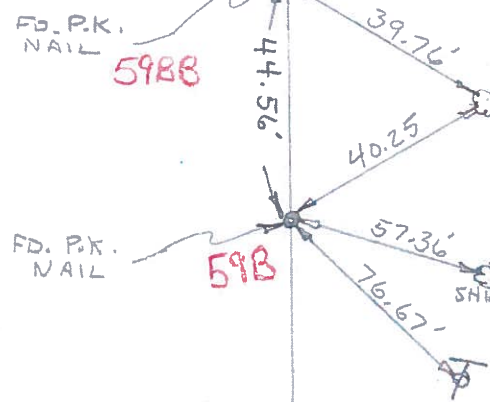
59-A

POINT IS 3150± SOUTH OF DEVILS HOLE ROAD.

STA. 451+81.45'



P.I. STA. 459+92.00



STA. 460+36.56

POINTS ARE 2480± N. OF SUGAR RIDGE RD.