

O.D.O.T. DISTRICT 2 SURVEY OFFICE (USE ONLY)

PERSONNEL

REFERENCE NO. 59 C

SHEET 37 OF 75

NOTES FARKAS DATE 12-20-17
 H.C. RHOADES WEATHER SUNNY
 R.C. FARKAS TEMP. 27°

ROUTE SR 199
 COUNTY WOOD
 TOWNSHIP WEBSTER
 SECTION 36
 T 6 N R 11 E

DWG BY AUBLE PID 101221

TYPE MONUMENT MAG/WASHER

ON SURFACE - ~~BELOW~~ ON

OFFSET CL PAVEMENT 2.7' LT : ~~RT~~

9' TO E EDGE PAVEMENT

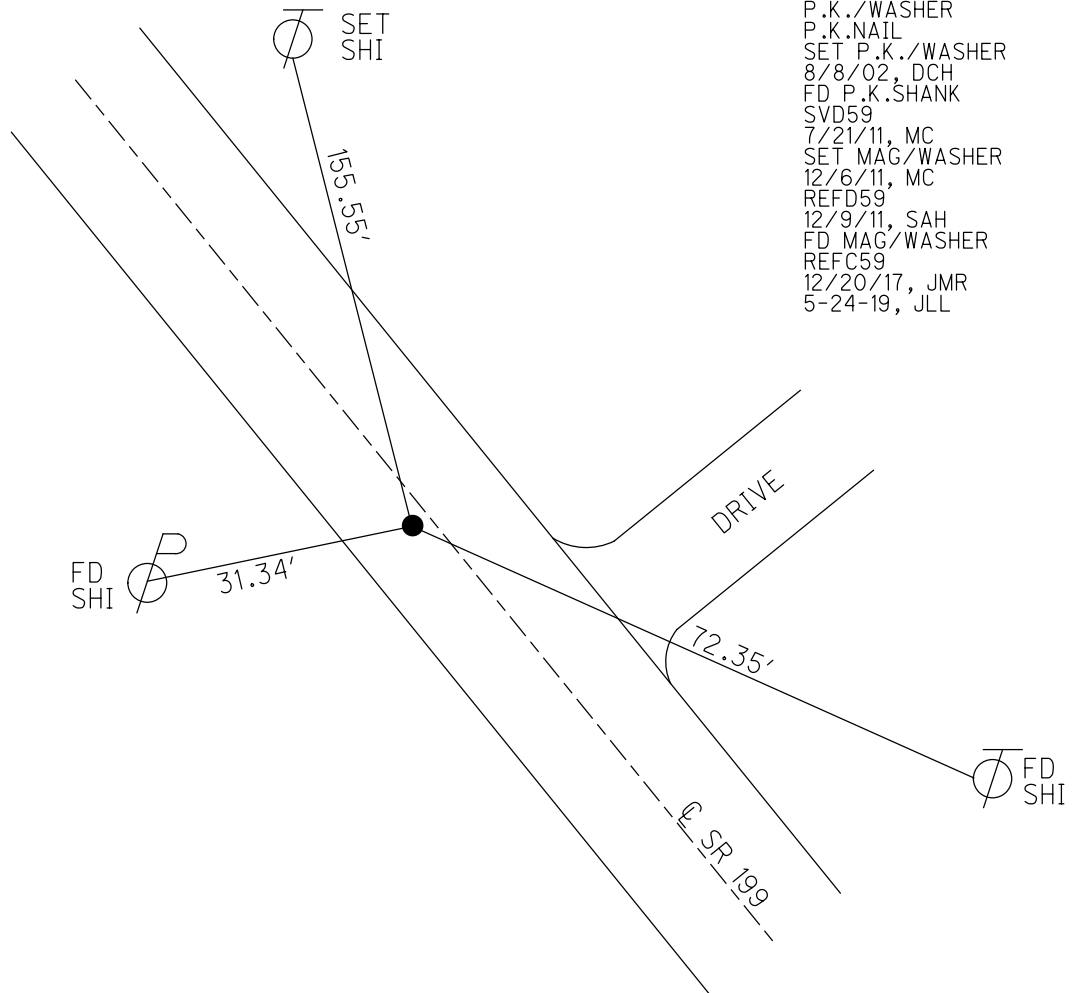
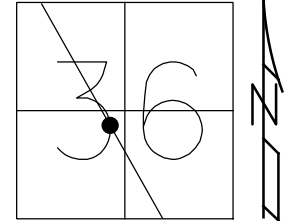
STATION: 1113+60

HORZ.DATUM: NAD83 (2011)

GEOID: 2012A

GRID: NORTHING: 646027.605

EASTING: 1681857.283

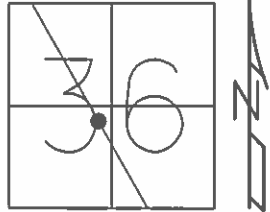


- RECORD:
 PREVIOUS MONUMENTS:
 P.K./WASHER
 P.K.NAIL
 SET P.K./WASHER
 8/8/02, DCH
 FD P.K.SHANK
 SVD59
 7/21/11, MC
 SET MAG/WASHER
 12/6/11, MC
 REFD59
 12/9/11, SAH
 FD MAG/WASHER
 REFC59
 12/20/17, JMR
 5-24-19, JLL

O.D.O.T. DISTRICT 2 SURVEY OFFICE (USE ONLY)

PERSONNEL _____ REFERENCE NO. 59 C SHEET 36 OF 72
 NOTES _____ FINGER _____ DATE 7/21/11 ROUTE SR 199
 H.C. _____ HUSS _____ WEATHER SUNNY COUNTY WOOD
 R.C. _____ CANTERBURY _____ TEMP. 100° TOWNSHIP WEBSTER
 _____ SECTION 36
 _____ T 6 N R 11 E

TYPE MONUMENT _____ PK/WASHER _____
 ON SURFACE - ~~BELOW~~ _____ ON _____
~~LEFT - C PAV'T~~ - RIGHT _____ 0.5' _____
 _____ 9' TO E EDGE PAVEMENT _____
 S.L.M. _____ 1113+60 _____



GRID: NORTHING: 646027.628 EASTING: 1681857.235

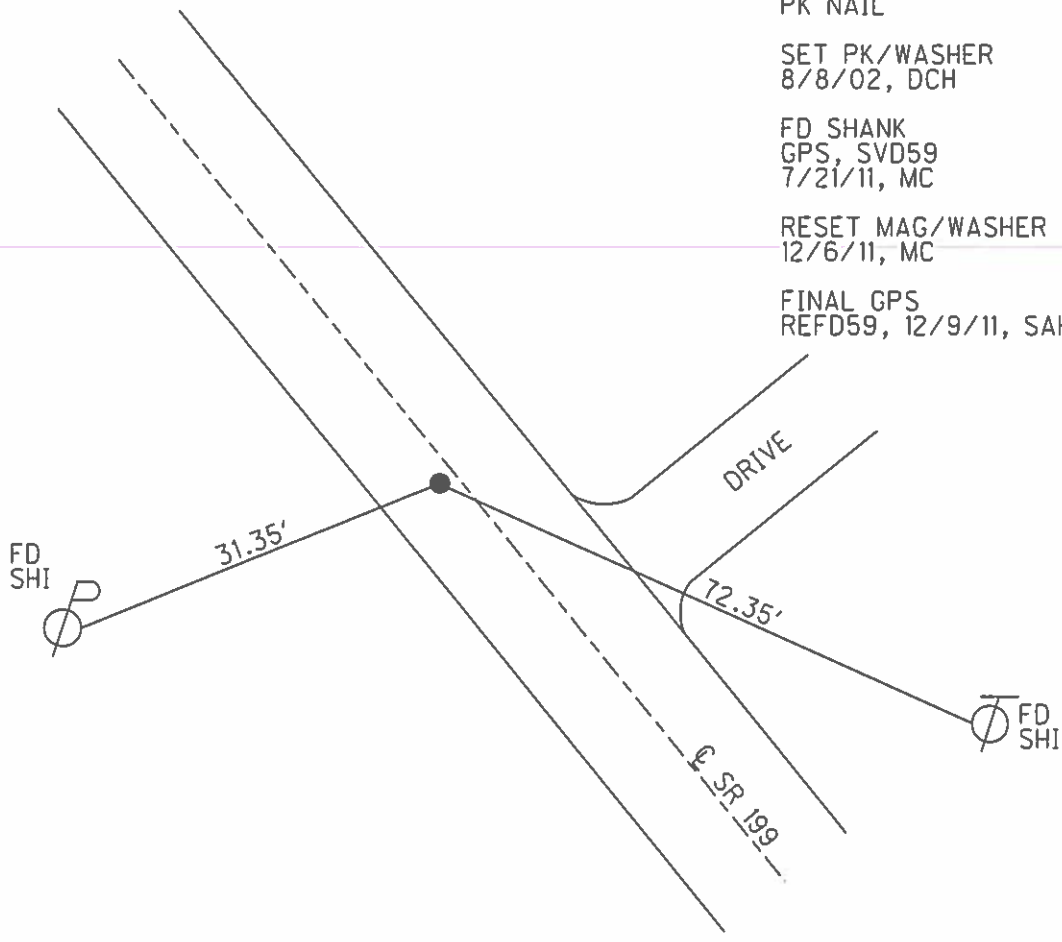
- PREVIOUS MONUMENTS:
 PK/WASHER
 PK NAIL

 SET PK/WASHER
 8/8/02, DCH

 FD SHANK
 GPS, SVD59
 7/21/11, MC

 RESET MAG/WASHER
 12/6/11, MC

 FINAL GPS
 REFD59, 12/9/11, SAH



O.D.O.T. DISTRICT 2 SURVEY OFFICE

PERSONNEL

REFERENCE NO. 59C

SHEET 17 OF 45

NOTES ROUSOS

DATE 4-2-02

ROUTE S.R. 199

H.C. HOMAN

WEATHER CLOUDY

COUNTY WOOD

R.C. ROUSOS

TEMP. 60

TOWNSHIP WEBSTER

SECTION 36

T 6 N R 11 E

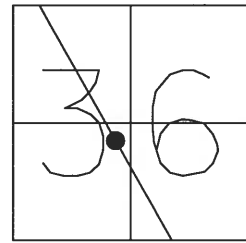
TYPE MONUMENT P.K. & WASHER

ON SURFACE - ~~BELOW~~ YES

~~LEFT~~ - Q PAV'T - RIGHT .5'

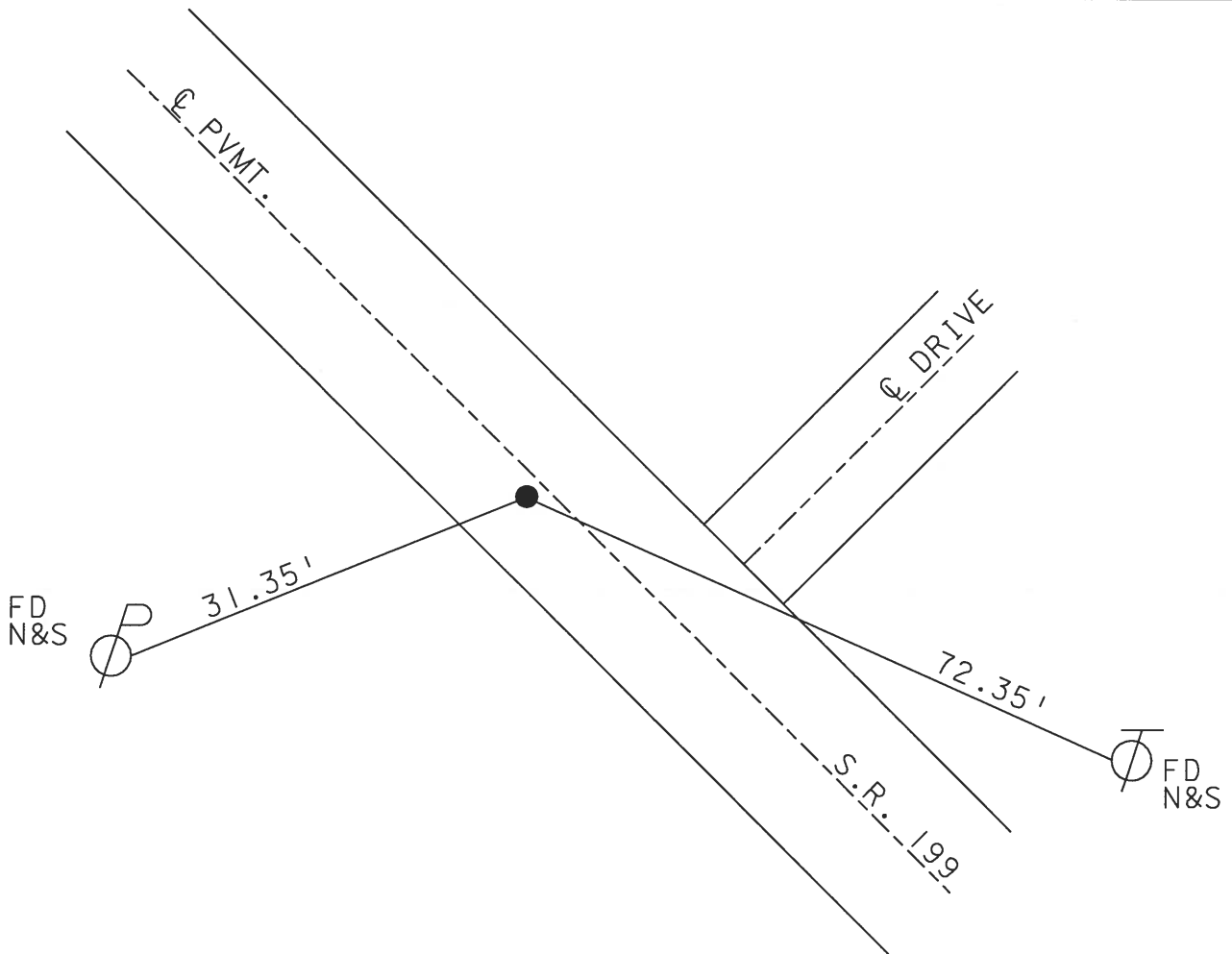
9' TO E EDGE PAVEMENT

S.L.M. 1113+60



PREVIOUS MONUMENTS:
PK / WASHER
PK NAIL

SET PK NAIL &
WASHER 7-24-02
D.C.H.



O.D.O.T. DISTRICT 2 SURVEY OFFICE

PERSONNEL

REFERENCE NO. 59-C SHEET 17 OF 26

NOTES CHENEY

H.C. BARBOUR

R.C. GEYMAN

DATE 12-13-1991

WEATHER CLOUDY

TEMP. 50°

ROUTE 199

COUNTY WOOD

TOWNSHIP WEBSTER

SECTION 36

T6N R11E

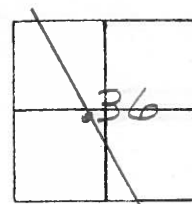
TYPE MONUMENT SET PK/WASHER

ON SURFACE - BELOW

~~LEFT~~ - 0.5' PAV'T. - RIGHT

9' TO E. EDGE PAVEMENT

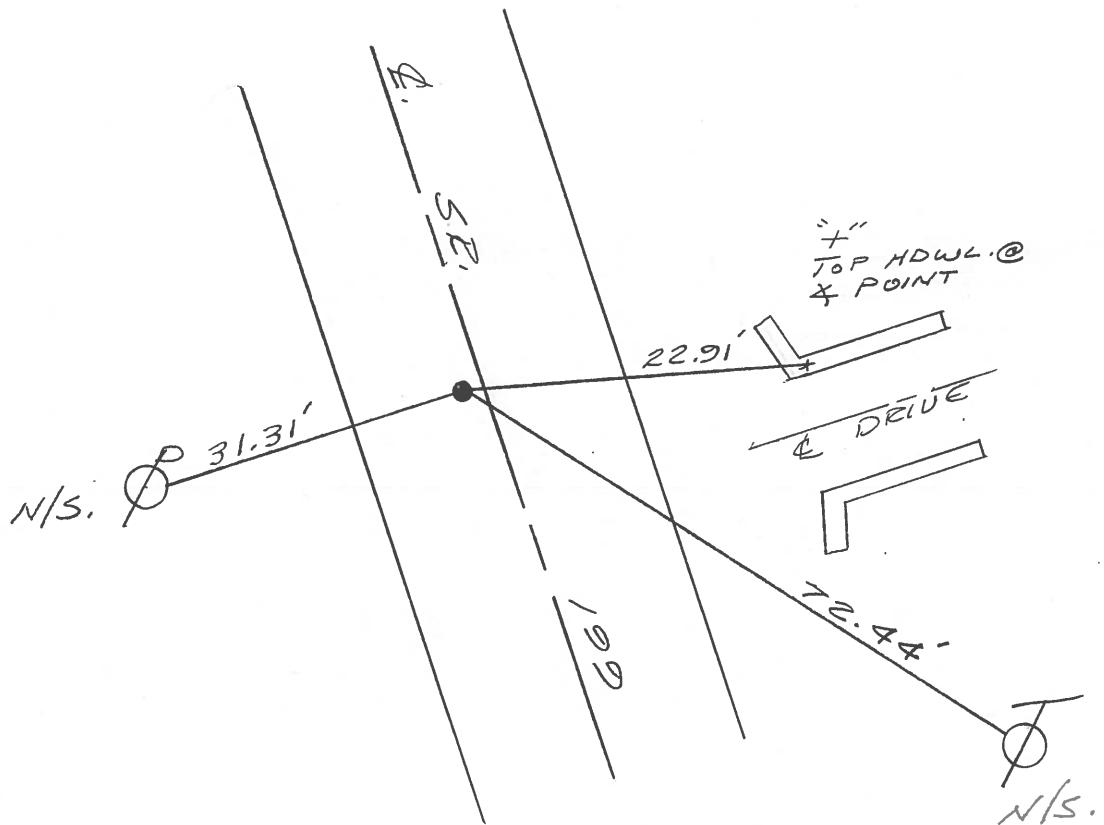
S.L.M. 1111+83



PREVIOUS MONUMENTS:

PK/WASHER

P.K. NAIL



QD.O.T. DISTRICT 2 SURVEY OFFICE

SHEET _____ OF _____

County WOOD S.R. 199

Date 1-4-83

Township WEBSTER

Weather CLEAR - WINDY

Section 36

Temp. +36°

T6N, R11E

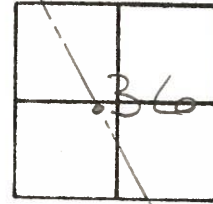
Personnel HOFFMAN

LOEHRKE

HOUSEHOLDER

BARNHISEL

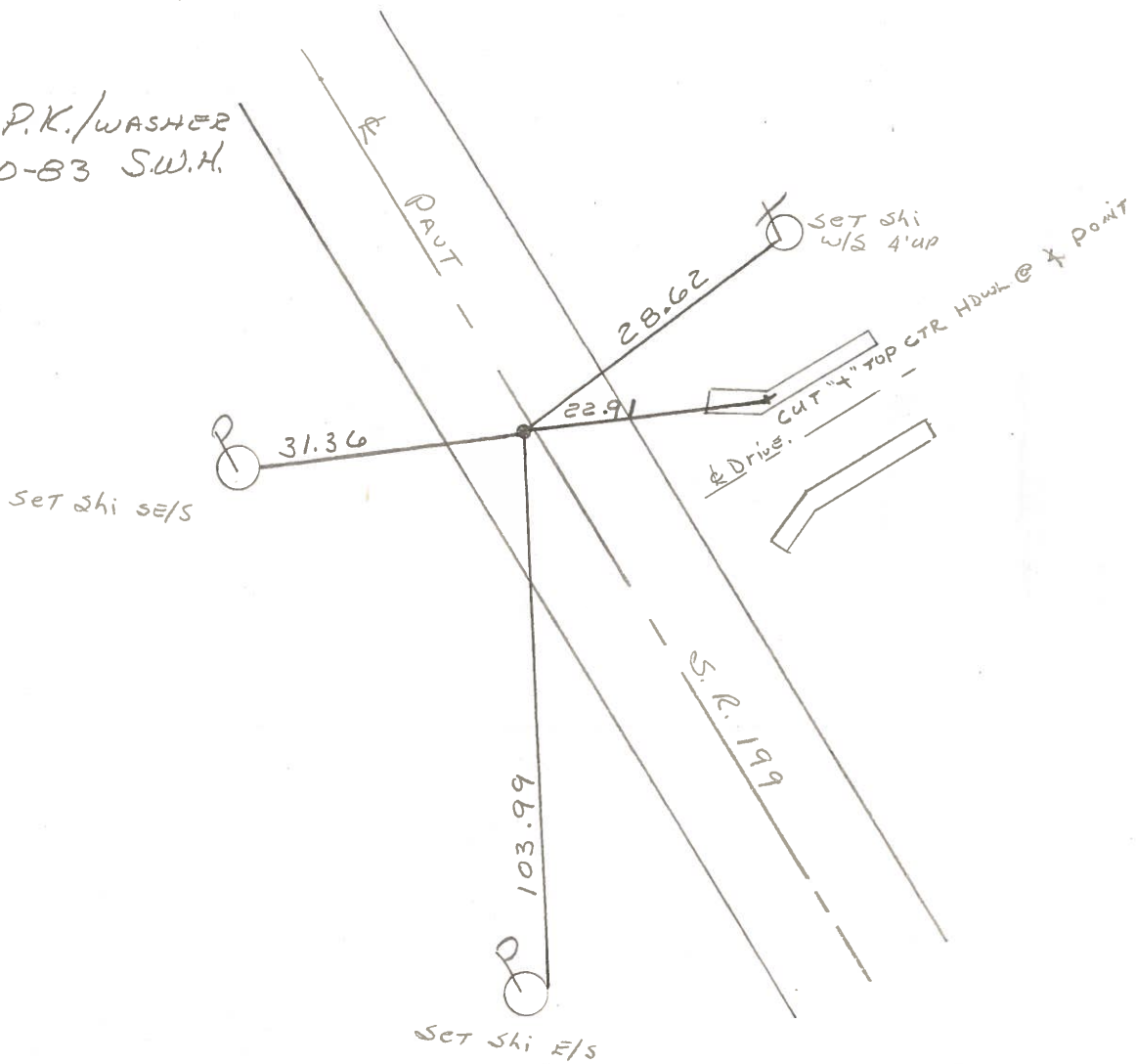
#59-C



Fd P.K. @ SURFACE
0.5' LT. of & PAUT
8.7' TO W.E.P.
8.7' TO E.E.P.

S.L.M. 1113 + 41

SET P.K./WASHER
7-20-83 S.W.H.



O.D.O.T. DISTRICT 2 SURVEY OFFICE

SHEET _____ OF _____

County WOOD S.R. 199

Date 9-15-71 (CHKD. 8-22-73)

Township WEBSTER

Weather _____

Section 36

Temp. _____

T N, R E

Personnel TOMSIK

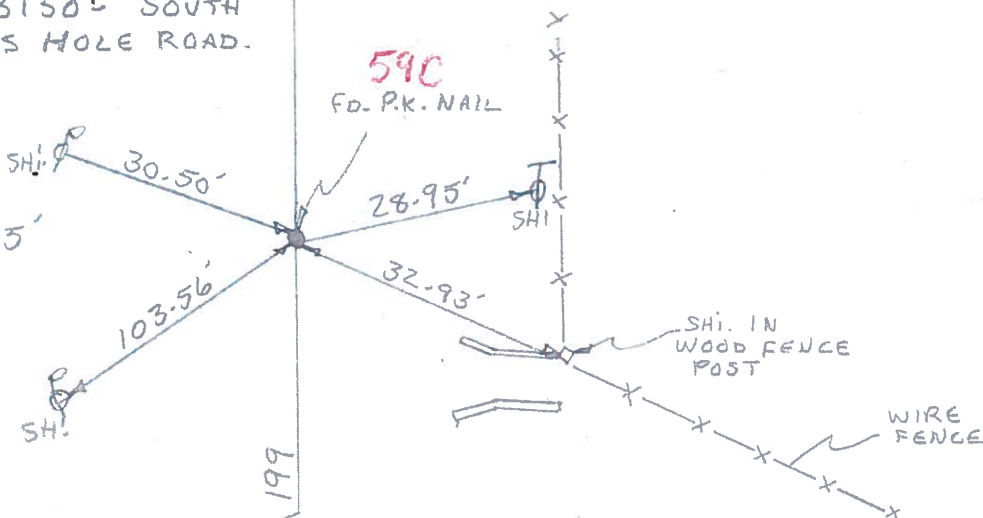
26	25
35	36



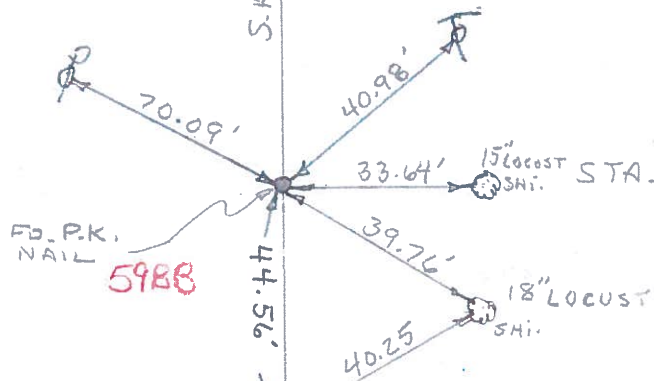
POINT IS 3150± SOUTH OF DEVILS HOLE ROAD.

59-A

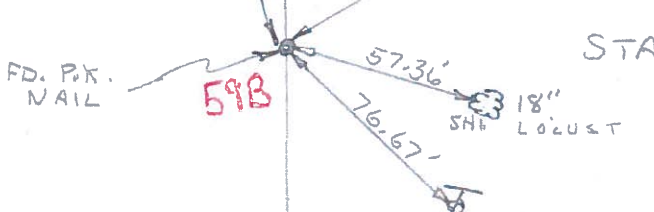
STA. 451+81.45'



P.I. STA. 459+92.00



STA. 460+36.56



POINTS ARE 2480± N. OF SUGAR RIDGE RD.

COPIED

PERSONNEL	TITLE	PERSONNEL	TITLE	COUNTY	DATE
Tomsic				WOOD	Nov. 4, 1971
Neuser				# 199	ckd 8-22-73
Vano				S. R.	WEATHER
Granata				SEC.	TEMP. 40°

DESCRIPTION Ref. Mon. LEFT CENTER LINE RIGHT JOB NO.

