

O.D.O.T. DISTRICT 2 SURVEY OFFICE (USE ONLY)

PERSONNEL

REFERENCE NO. 59 D

SHEET 38 OF 75

NOTES FARKAS DATE 12-20-17
 H.C. RHOADES WEATHER SUNNY
 R.C. FARKAS TEMP. 27°

ROUTE SR 199
 COUNTY WOOD
 TOWNSHIP WEBSTER
 SECTION 36
 T 6 N R 11 E

DWG BY AUBLE PID 101221

TYPE MONUMENT MAG/WASHER

ON SURFACE - ~~BELOW~~ ON

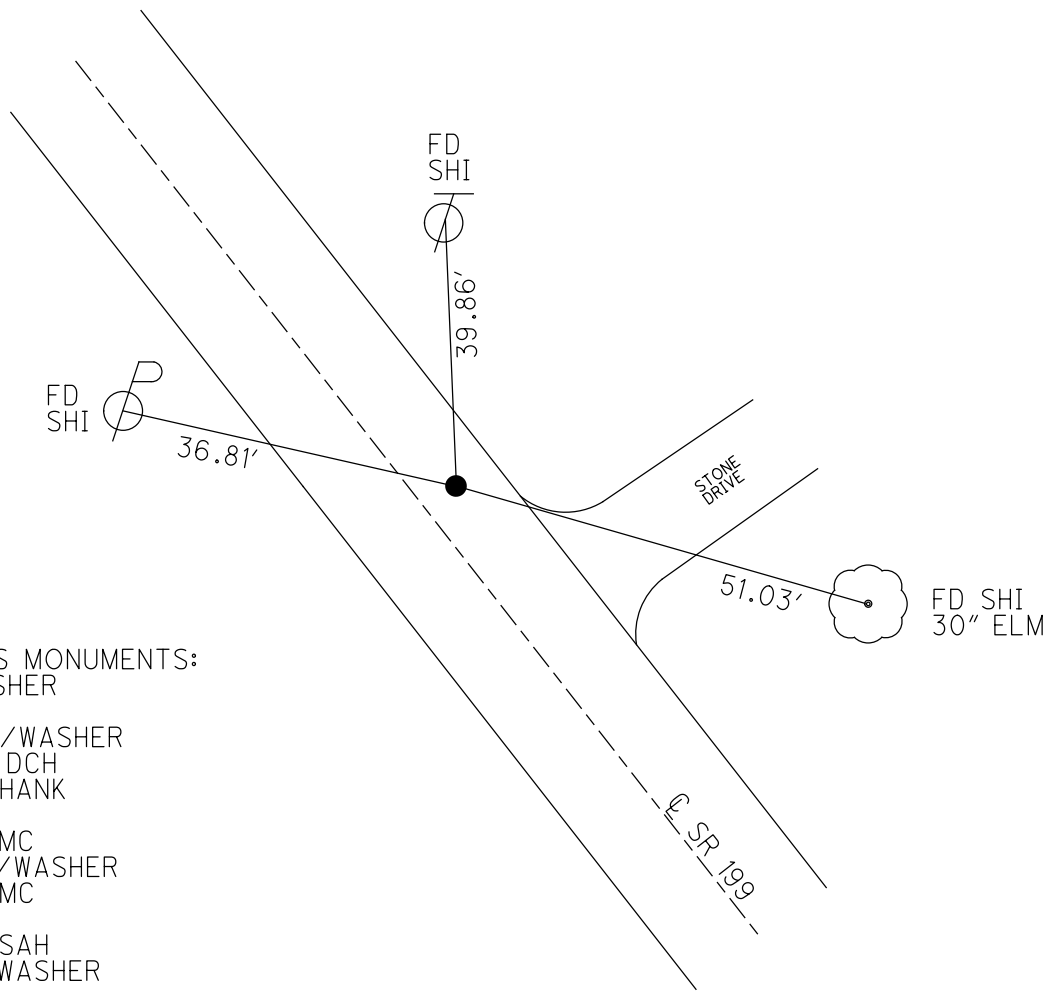
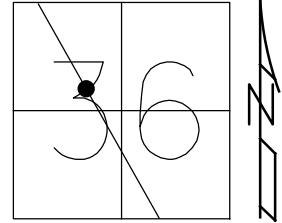
OFFSET $\text{\textcircled{C}}$ PAVEMENT 2.8' LT : ~~RT~~

7.9' TO RT EDGE PAVEMENT

STATION: 1124+45

HORZ.DATUM: NAD83 (2011) GEOID: 2012A

GRID: NORTHING: 647001.768 EASTING: 1681382.583

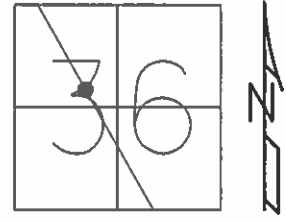


RECORD:
 PREVIOUS MONUMENTS:
 P.K./WASHER
 P.K.NAIL
 SET P.K./WASHER
 8/8/02, DCH
 FD P.K.SHANK
 SVE59
 7/21/11, MC
 SET MAG/WASHER
 12/6/11, MC
 REFE59
 12/9/11, SAH
 FD MAG/WASHER
 REFD59
 12/20/17, JMR
 5-24-19, JLL

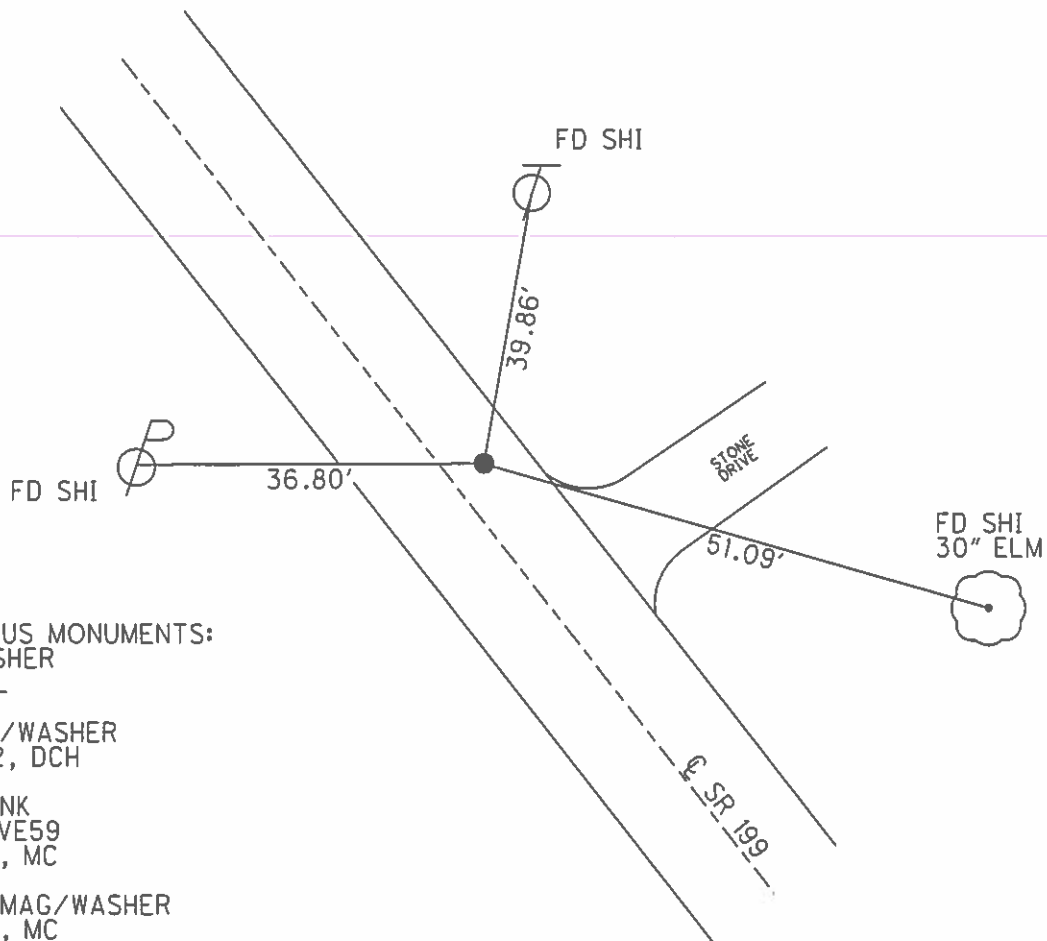
O.D.O.T. DISTRICT 2 SURVEY OFFICE (USE ONLY)

PERSONNEL _____ REFERENCE NO. 59 D SHEET 37 OF 72
 NOTES _____ FINGER _____ DATE 7/21/11 ROUTE SR 199
 H.C. _____ HUSS _____ WEATHER SUNNY COUNTY WOOD
 R.C. _____ CANTERBURY _____ TEMP. 100° TOWNSHIP WEBSTER
 _____ SECTION 36
 _____ T 6 N R 11 E

TYPE MONUMENT _____ PK/WASHER _____
 ON SURFACE - ~~BELOW~~ _____ ON _____
~~LEFT - C PAV'T~~ - RIGHT _____ 2.8'
 _____ 7.9' TO RT EDGE PAVEMENT
 S.L.M. _____ 1124+45



GRID: NORTHING: 647001.785 EASTING: 1681382.551



PREVIOUS MONUMENTS:
 PK/WASHER
 PK NAIL

 SET PK/WASHER
 8/8/02, DCH

 FD SHANK
 GPS, SVE59
 7/21/11, MC

 RESET MAG/WASHER
 12/6/11, MC

 FINAL GPS
 REFE59, 12/9/11, SAH

O.D.O.T. DISTRICT 2 SURVEY OFFICE

PERSONNEL

REFERENCE NO. 59D

SHEET 18 OF 45

NOTES ROUSOS

DATE 4-2-02

ROUTE S.R. 199

H.C. HOMAN

WEATHER CLOUDY

COUNTY WOOD

R.C. ROUSOS

TEMP. 60

TOWNSHIP WEBSTER

SECTION 36

T 6 N R 11 E

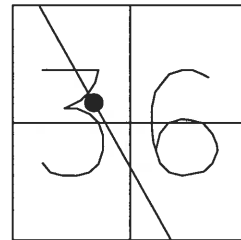
TYPE MONUMENT P.K. & WASHER

ON SURFACE - ~~BELOW~~ YES

~~LEFT~~ - Q PAV'T - RIGHT 2.5'

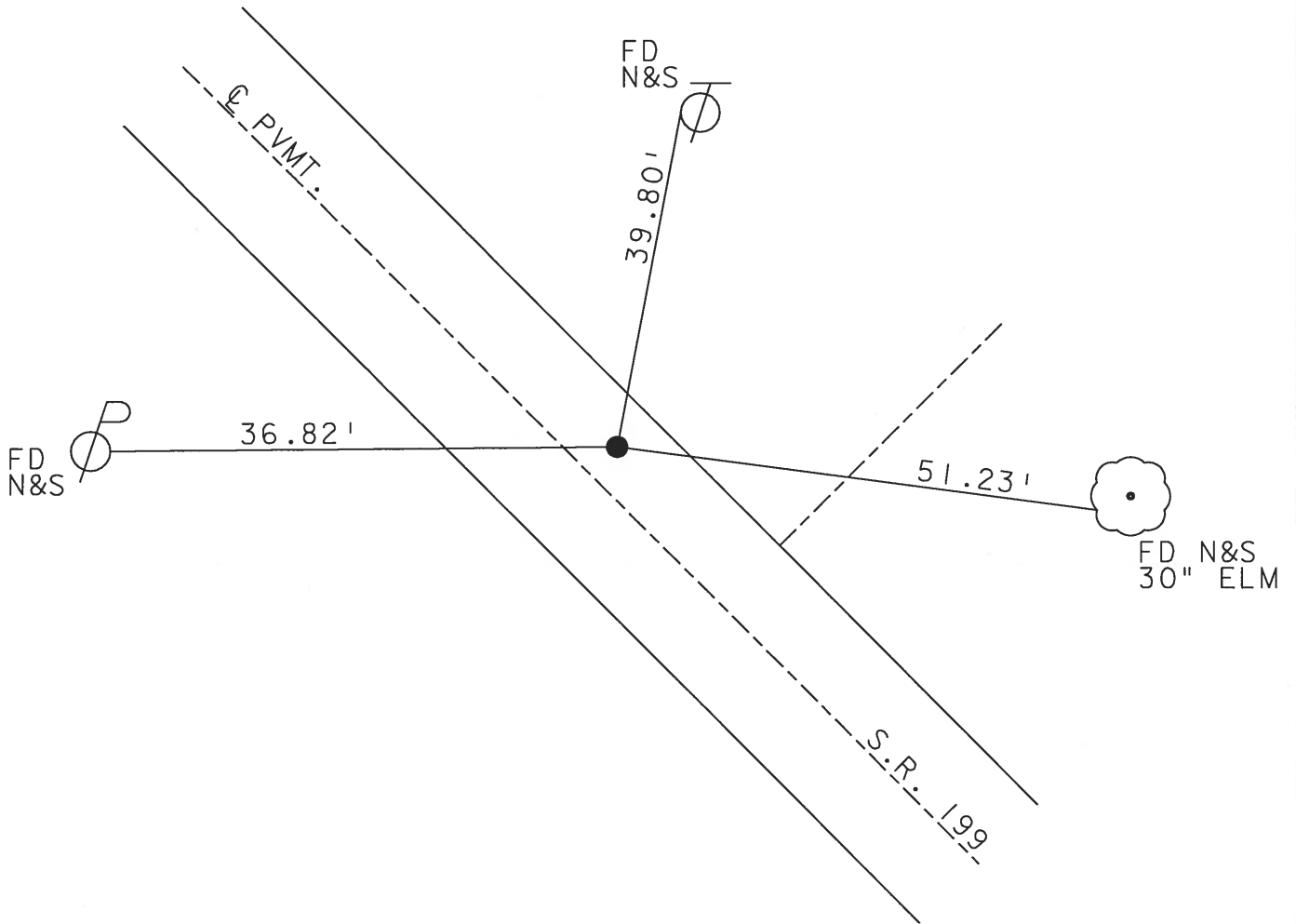
7' TO E EDGE PAVEMENT

S.L.M. 1124+45



PREVIOUS MONUMENTS:
PK / WASHER
PK NAIL

SET PK NAIL &
WASHER 8-8-02
D.C.H.



O.D.O.T. DISTRICT 2 SURVEY OFFICE

PERSONNEL

REFERENCE NO. 59-D

SHEET 18 OF 26

NOTES CHEHEY

H.C. BARBOUR

R.C. GEYMAN

DATE 12-13-1991

WEATHER CLOUDY

TEMP. 50°

ROUTE 199

COUNTY WOOD

TOWNSHIP WEBSTER

SECTION 36

T6 N R 11 E

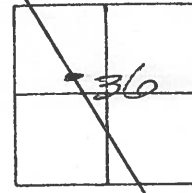
TYPE MONUMENT SET PK/WASHER

ON SURFACE - BELOW

~~EFF - C~~ PAV'T. - RIGHT 2.5'

7' TO E. EDGE PAVEMENT

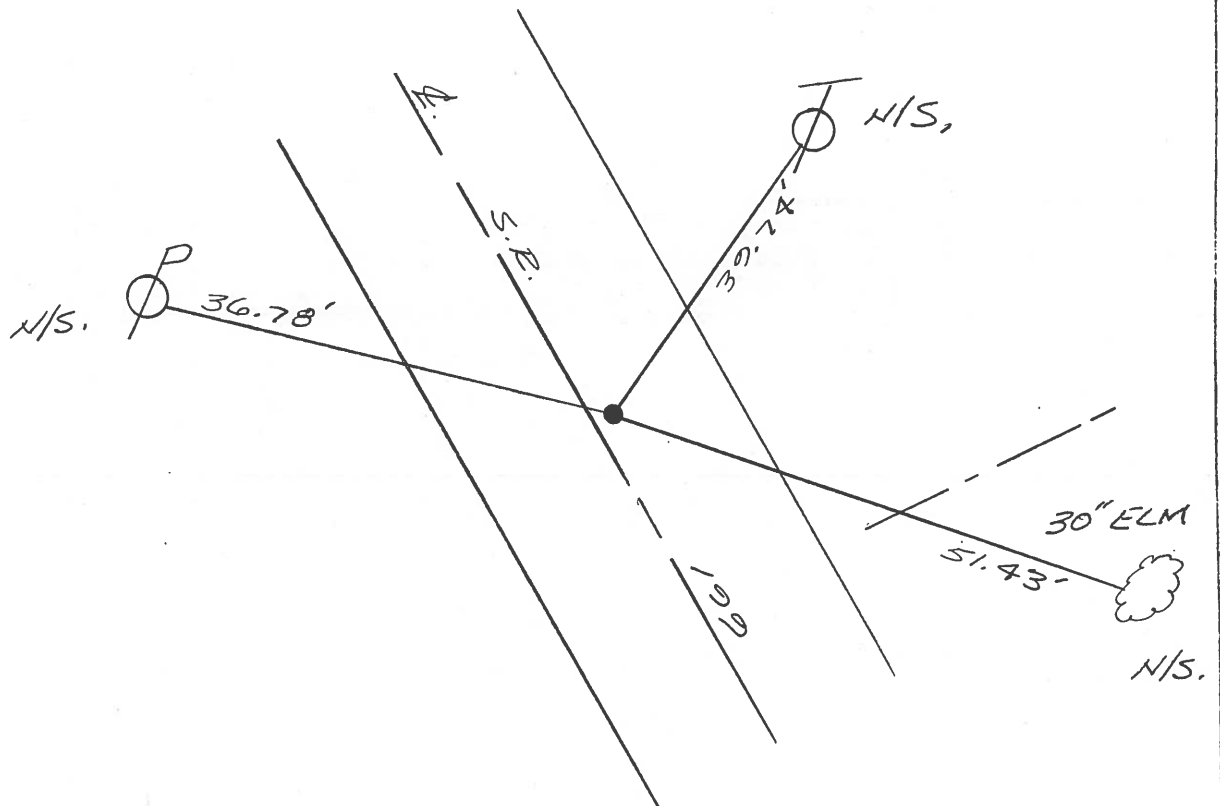
S.L.M. 1122+68



PREVIOUS MONUMENTS:

PK/WASHER

PK NAIL



Q.D.O.T. DISTRICT 2 SURVEY OFFICE

SHEET _____ OF _____

County WOOD S. R. 199

Township WEBSTER

Section 36

T6N, R11E

Personnel HOFFMAN

LOEHRKE

HOUSEHOLDER

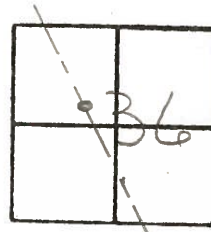
BARNHISEL

#59-D

Date 1-4-83

Weather CLEAR - WINDY

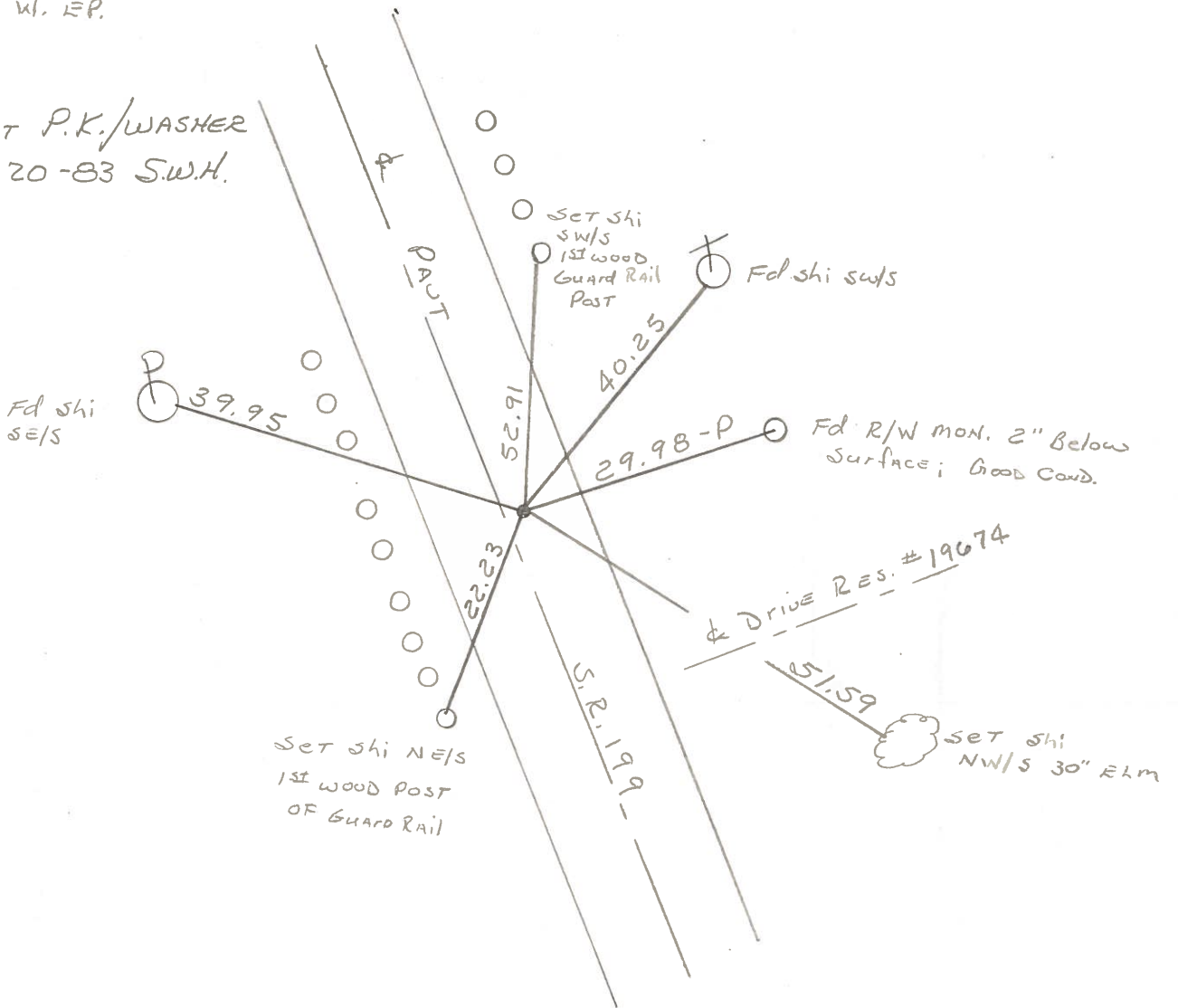
Temp. +36°



Fd P.K. @ SURFACE
2.5' RT of & PAUT
6.9' TO E. EP.
11.7' TO W. EP.

S.L.M. 1124+25

SET P.K./WASHER
7-20-83 S.W.H.



O.D.O.T. DISTRICT 2 SURVEY OFFICE

SHEET _____ OF _____

County WOOD S.R. 199

Township WEBSTER

Section 36

T N, R E

Personnel TOM SIO

NEUSER

VANYO

GRANATA

Date 11-4-71 (8-22-73) ^{CHKD}

Weather _____

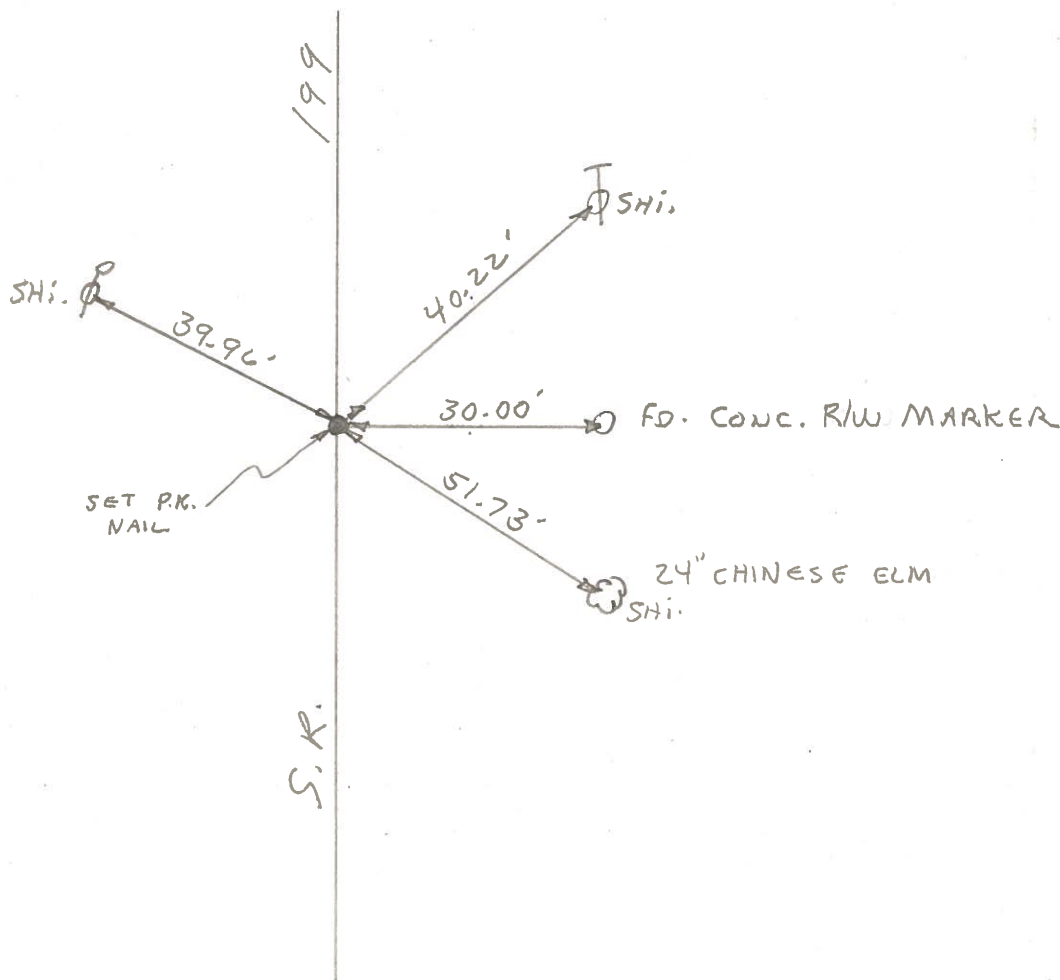
Temp. _____

26	25
35	36



59-80

POINT IS 2000' ± SOUTH OF DEVILS HOLE RD.



CORRECT

PERSONNEL	TITLE	PERSONNEL	TITLE
Tomsic			
Neuser			
Vanyo			
Granata			

COUNTY WOOD DATE Nov. 4, 1971
 #199
 S. R. _____ WEATHER _____
 SEC. _____ TEMP. _____

DESCRIPTION Ref. Mon. LEFT CENTER LINE RIGHT JOB NO. _____

