

O.D.O.T. DISTRICT 2 SURVEY OFFICE (USE ONLY)

PERSONNEL

REFERENCE NO. 59 E

SHEET 39 OF 75

NOTES FARKAS

DATE 12-20-17

ROUTE SR 199

H.C. RHOADES

WEATHER SUNNY

COUNTY WOOD

R.C. FARKAS

TEMP. 27°

TOWNSHIP WEBSTER

SECTION 36

DWG BY AUBLE PID 101221

T 6 N R 11 E

TYPE MONUMENT MAG/WASHER

ON SURFACE - ~~BELOW~~ ON

OFFSET 0.3' LT : ~~RT~~

9.9' TO LT EDGE PAVEMENT

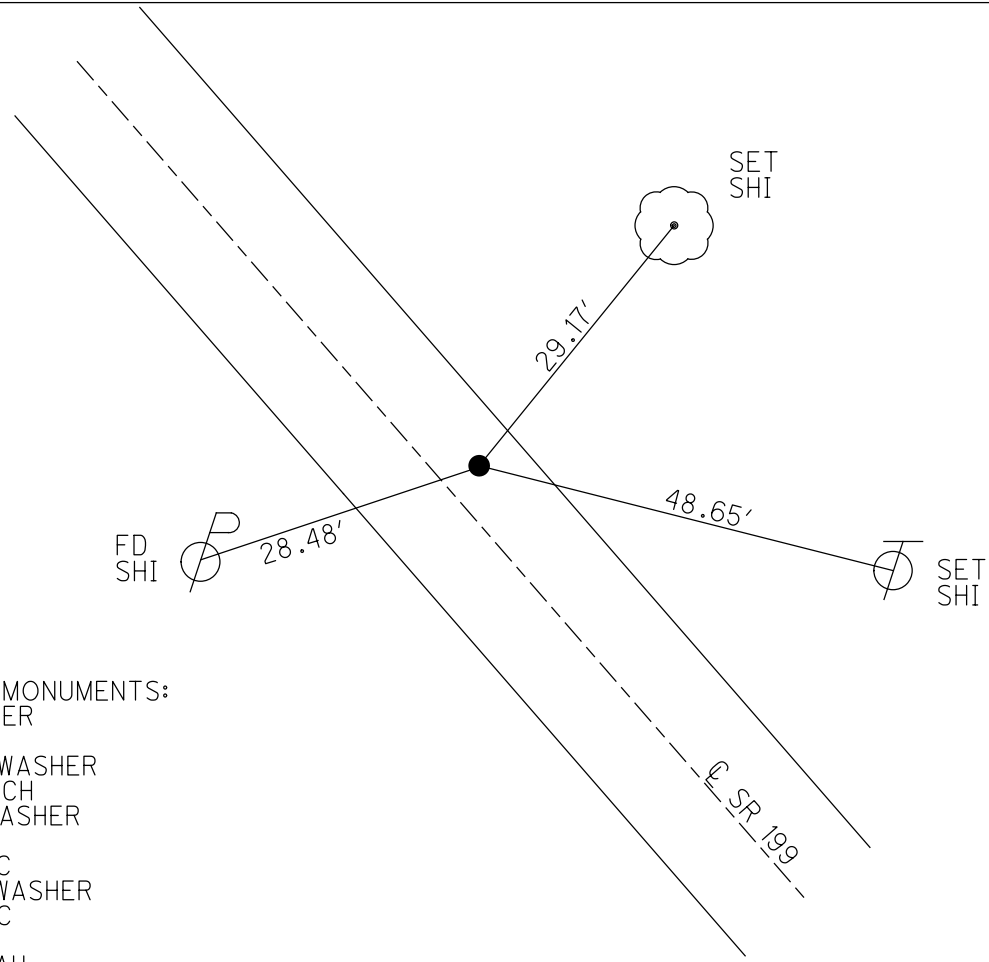
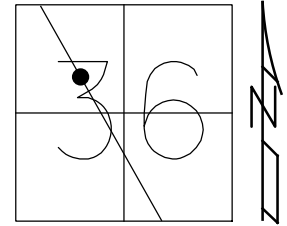
STATION: 1128+68

HORIZ.DATUM: NAD83 (2011)

GEOID: 2012A

GRID: NORTHING: 647371.513

EASTING: 1681204.351

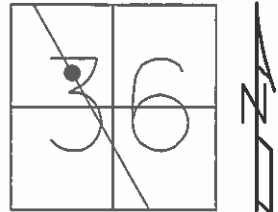


RECORD:
 PREVIOUS MONUMENTS:
 P.K./WASHER
 P.K.NAIL
 SET P.K./WASHER
 8/8/02, DCH
 FD P.K./WASHER
 SVF59
 7/21/11, MC
 SET MAG/WASHER
 12/6/11, MC
 REFF59
 12/9/11, SAH
 FD MAG/WASHER
 REFE59
 12/20/17, JMR
 5-24-19, JLL

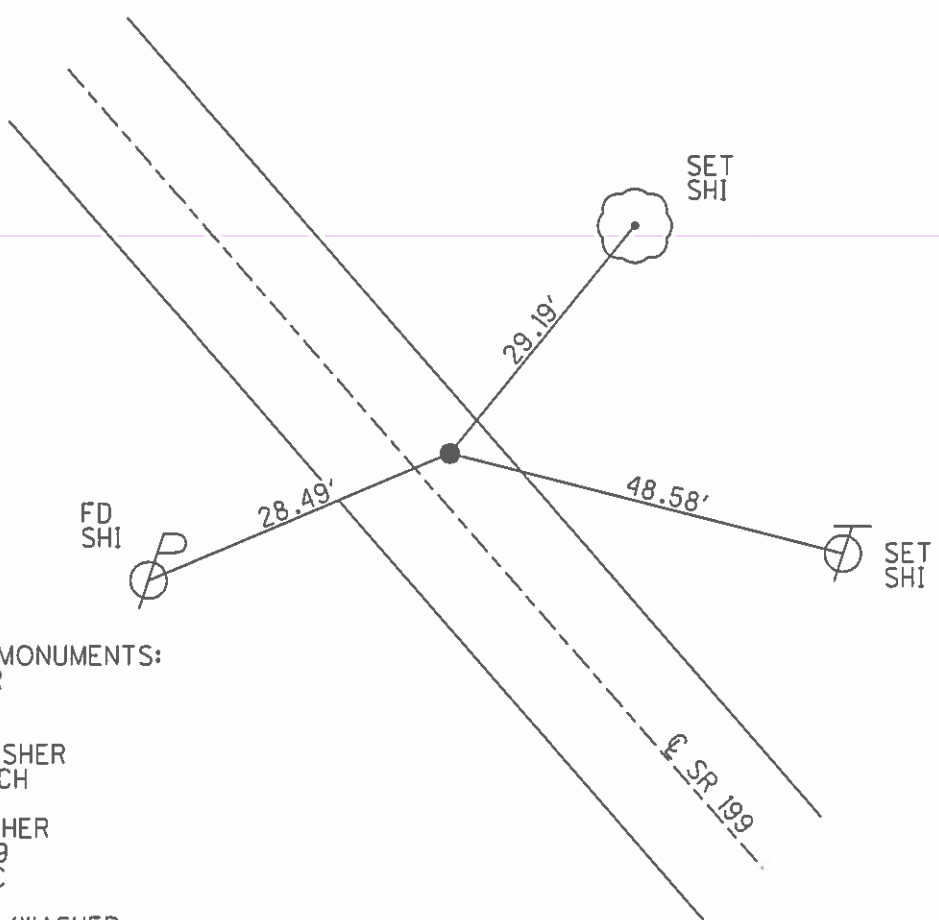
O.D.O.T. DISTRICT 2 SURVEY OFFICE (USE ONLY)

PERSONNEL _____ REFERENCE NO. 59 E SHEET 38 OF 72
 NOTES _____ FINGER _____ DATE 7/21/11 ROUTE SR 199
 H.C. HUSS WEATHER SUNNY COUNTY WOOD
 R.C. CANTERBURY TEMP. 100° TOWNSHIP WEBSTER
 _____ SECTION 36
 _____ T 6 N R 11 E

TYPE MONUMENT _____ PK/WASHER _____
 ON SURFACE - ~~BELOW~~ _____ ON _____
 LEFT - ~~C~~ PAV'T - ~~RIGHT~~ _____ 0.3' _____
9.9' TO LT EDGE PAVEMENT
 S.L.M. _____ 1128+68



GRID: NORTHING: 647371.534 EASTING: 1681204.290



PREVIOUS MONUMENTS:
 PK/WASHER
 PK NAIL

 SET PK/WASHER
 8/8/02, DCH

 FD PK/WASHER
 GPS, SVF59
 7/21/11, MC

 RESET MAG/WASHER
 12/6/11, MC

 FINAL GPS
 REFF59, 12/9/11, SAH

O.D.O.T. DISTRICT 2 SURVEY OFFICE

PERSONNEL

REFERENCE NO. 59E

SHEET 19 OF 45

NOTES ROUSOS

DATE 4-2-02

ROUTE S.R. 199

H.C. HOMAN

WEATHER CLOUDY

COUNTY WOOD

R.C. ROUSOS

TEMP. 60

TOWNSHIP WEBSTER

SECTION 36

T 6 N R 11 E

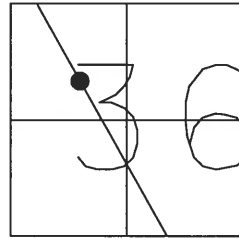
TYPE MONUMENT P.K. & WASHER

ON SURFACE - ~~BELOW~~ YES

~~LEFT - Q~~ PAV'T - ~~RIGHT~~

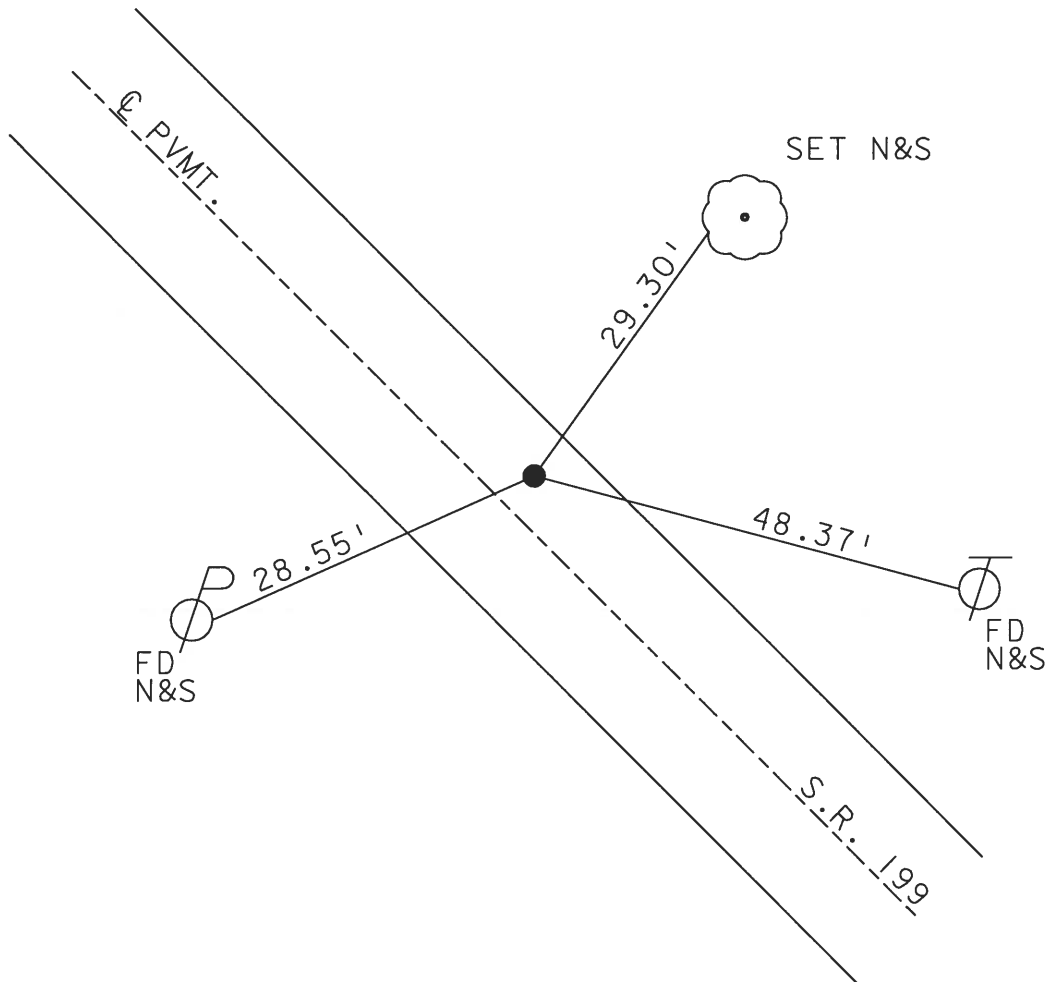
10' TO E EDGE PAVEMENT

S.L.M. 1124+45



PREVIOUS MONUMENTS:
PK / WASHER
PK NAIL

SET PK NAIL &
WASHER 8-8-02
D.C.H.



O.D.O.T. DISTRICT 2 SURVEY OFFICE

PERSONNEL

REFERENCE NO. 59-E SHEET 19 OF 26

NOTES CHENEY

H.C. BARBOUR

DATE 12-13-1991

ROUTE 199

R.C. GEYMAN

WEATHER CLOUDY

COUNTY WOOD

TEMP. 50°

TOWNSHIP WEBSTER

SECTION 36

T6 N R 11 E

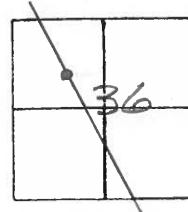
TYPE MONUMENT SET PK/WASHER

ON SURFACE - ~~BELOW~~

~~LEFT~~ & PAV'T. - ~~RIGHT~~

10' TO EDGE PAVEMENT

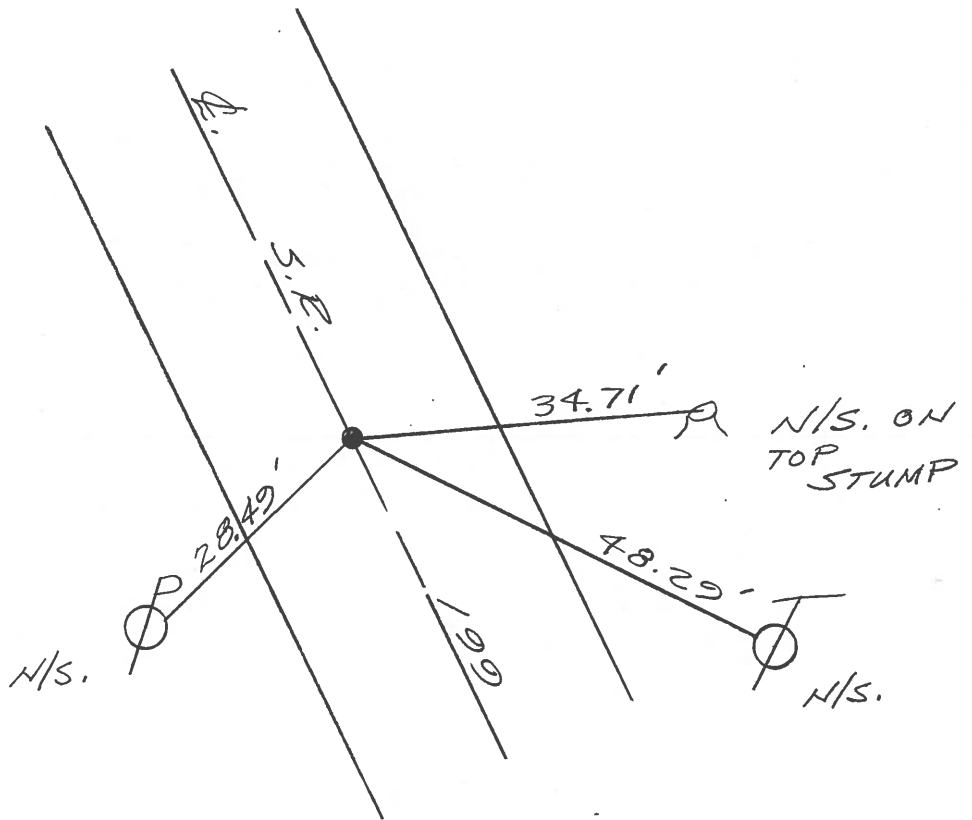
S.L.M. 1126+78



PREVIOUS MONUMENTS:

PK/WASHER

PK NAIL



QD.O.T. DISTRICT 2 SURVEY OFFICE

SHEET _____ OF _____

County WOOD S.R. 199

Date 1-4-83

Township WEBSTER

Weather CLEAR - WINDY

Section 36

Temp. +36°

T6N, R11E

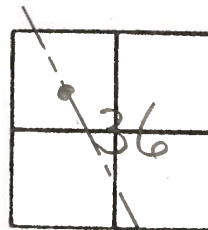
Personnel HOFFMAN

LOEHRKE

HOUSEHOLDER

BARNHISEL

#59-E



Fd P.K. @ SURFACE

S.L.M. 1128 + 36

ON & PAUT

8.8' TO W.E.P.

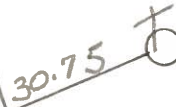
9.7' TO E.E.P.

SET P.K./WASHER
7-20-83 S.W.H.

Fd shi se/s



PAUT



Fd shi w/s

34.60

Set shi w/s 4"

94.33

S.R. 199

Fd shi NE/S



O.D.O.T. DISTRICT 2 SURVEY OFFICE

SHEET _____ OF _____

County WOOD S.R. 199

Township WEBSTER

Section 36

T N, R E

Personnel TOMSIK

NEUSER

VANYO

GRANATA

Date 11-4-71 (CHKD 8-22-73)

Weather _____

Temp. _____

26	25
35	36



59-~~E~~

POINT IS 1550'± SOUTH OF DEVILS HOLE RD.

