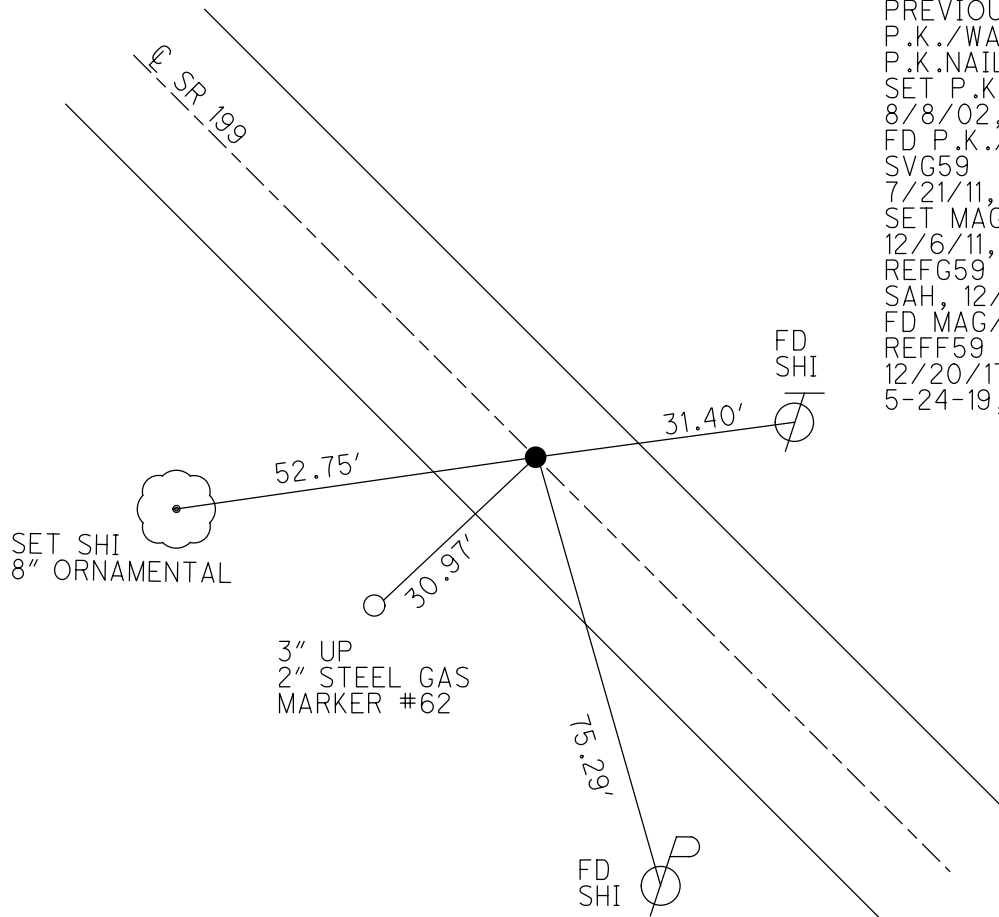
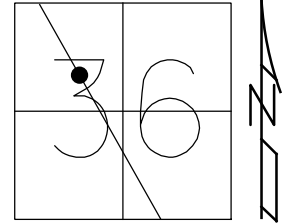


O.D.O.T. DISTRICT 2 SURVEY OFFICE (USE ONLY)

PERSONNEL \_\_\_\_\_ REFERENCE NO. 59 F SHEET 40 OF 75  
 NOTES FARKAS DATE 12-20-17 ROUTE SR 199  
 H.C. RHOADES WEATHER SUNNY COUNTY WOOD  
 R.C. FARKAS TEMP. 27° TOWNSHIP WEBSTER  
 DWG BY AUBLE PID 101221 SECTION 36  
 T 6 N R 11 E

TYPE MONUMENT MAG/WASHER  
 ON SURFACE - ~~BELOW~~ ON  
 OFFSET Q PAVEMENT ON ~~LT~~ : ~~RT~~  
10.3' TO RT EDGE PAVEMENT  
 STATION: 1131+38

HORZ. DATUM: NAD83 (2011) GEOID: 2012A  
 GRID: NORTHING: 647627.793 EASTING: 1681083.951



RECORD:  
 PREVIOUS MONUMENTS:  
 P.K./WASHER  
 P.K.NAIL  
 SET P.K./WASHER  
 8/8/02, DCH  
 FD P.K./WASHER  
 SVG59  
 7/21/11, MC  
 SET MAG/WASHER  
 12/6/11, MC  
 REFG59  
 SAH, 12/9/11  
 FD MAG/WASHER  
 REFF59  
 12/20/17, JMR  
 5-24-19, JLL

O.D.O.T. DISTRICT 2 SURVEY OFFICE (USE ONLY)

PERSONNEL \_\_\_\_\_ REFERENCE NO. 59 F SHEET 39 OF 72

NOTES FINGER DATE 7/21/11 ROUTE SR 199

H.C. HUSS WEATHER SUNNY COUNTY WOOD

R.C. CANTRBURY TEMP. 100° TOWNSHIP WEBSTER

SECTION 36

T 6 N R 11 E

TYPE MONUMENT \_\_\_\_\_ PK/WASHER \_\_\_\_\_

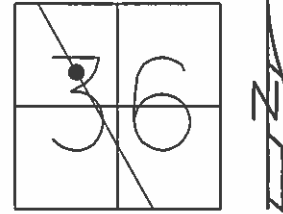
ON SURFACE - ~~BELOW~~ \_\_\_\_\_ ON \_\_\_\_\_

~~LEFT~~ - CL PAV'T - ~~RIGHT~~ \_\_\_\_\_ ON \_\_\_\_\_

10.3' TO RT. EDGE PAVEMENT

S.L.M. \_\_\_\_\_ 1131+38 \_\_\_\_\_

GRID: NORTHING: 647627.824 EASTING: 1681083.936



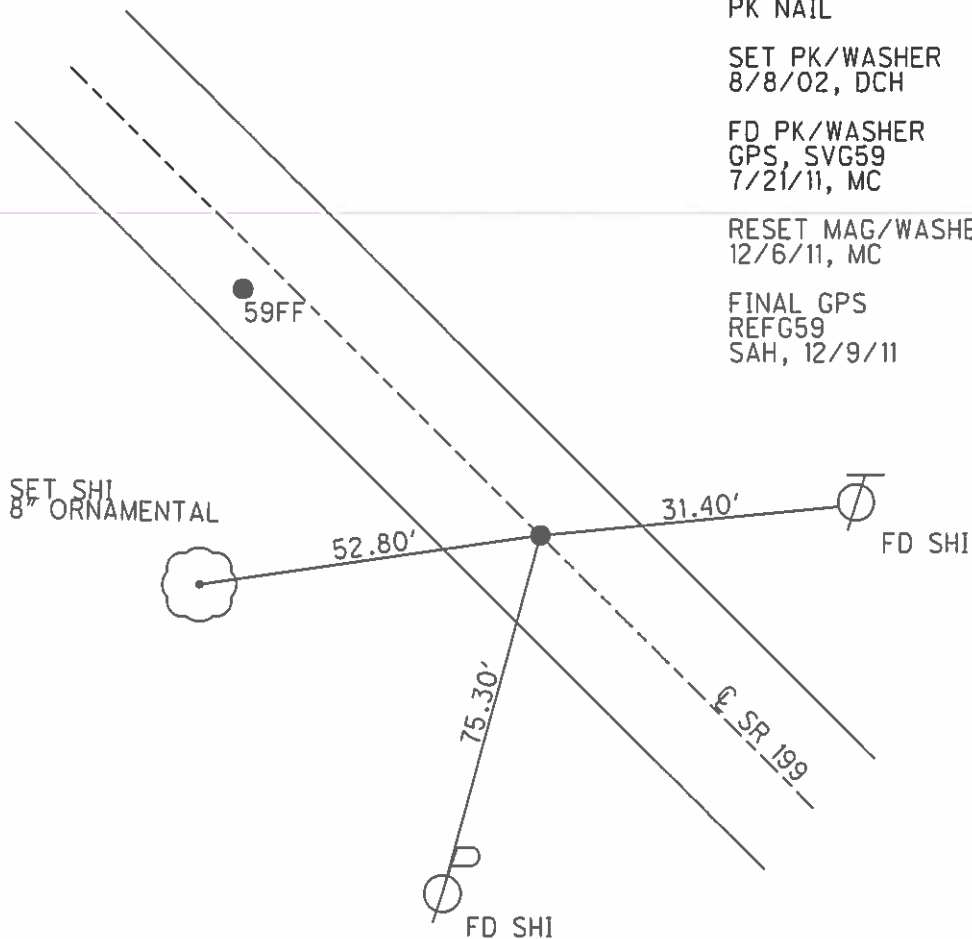
PREVIOUS MONUMENTS:  
PK/WASHER  
PK NAIL

SET PK/WASHER  
8/8/02, DCH

FD PK/WASHER  
GPS, SVG59  
7/21/11, MC

RESET MAG/WASHER  
12/6/11, MC

FINAL GPS  
REFG59  
SAH, 12/9/11



O.D.O.T. DISTRICT 2 SURVEY OFFICE

PERSONNEL

REFERENCE NO. 59F

SHEET 20 OF 45

NOTES ROUSOS

DATE 4-2-02

ROUTE S.R. 199

H.C. HOMAN

WEATHER CLOUDY

COUNTY WOOD

R.C. ROUSOS

TEMP. 60

TOWNSHIP WEBSTER

SECTION 36

T 6 N R 11 E

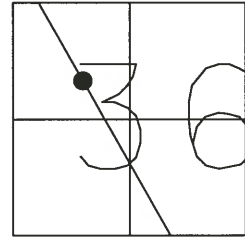
TYPE MONUMENT P.K. & WASHER

ON SURFACE - ~~BELOW~~ YES

LEFT - Q PAV'T - RIGHT "B" Q "A" LT.

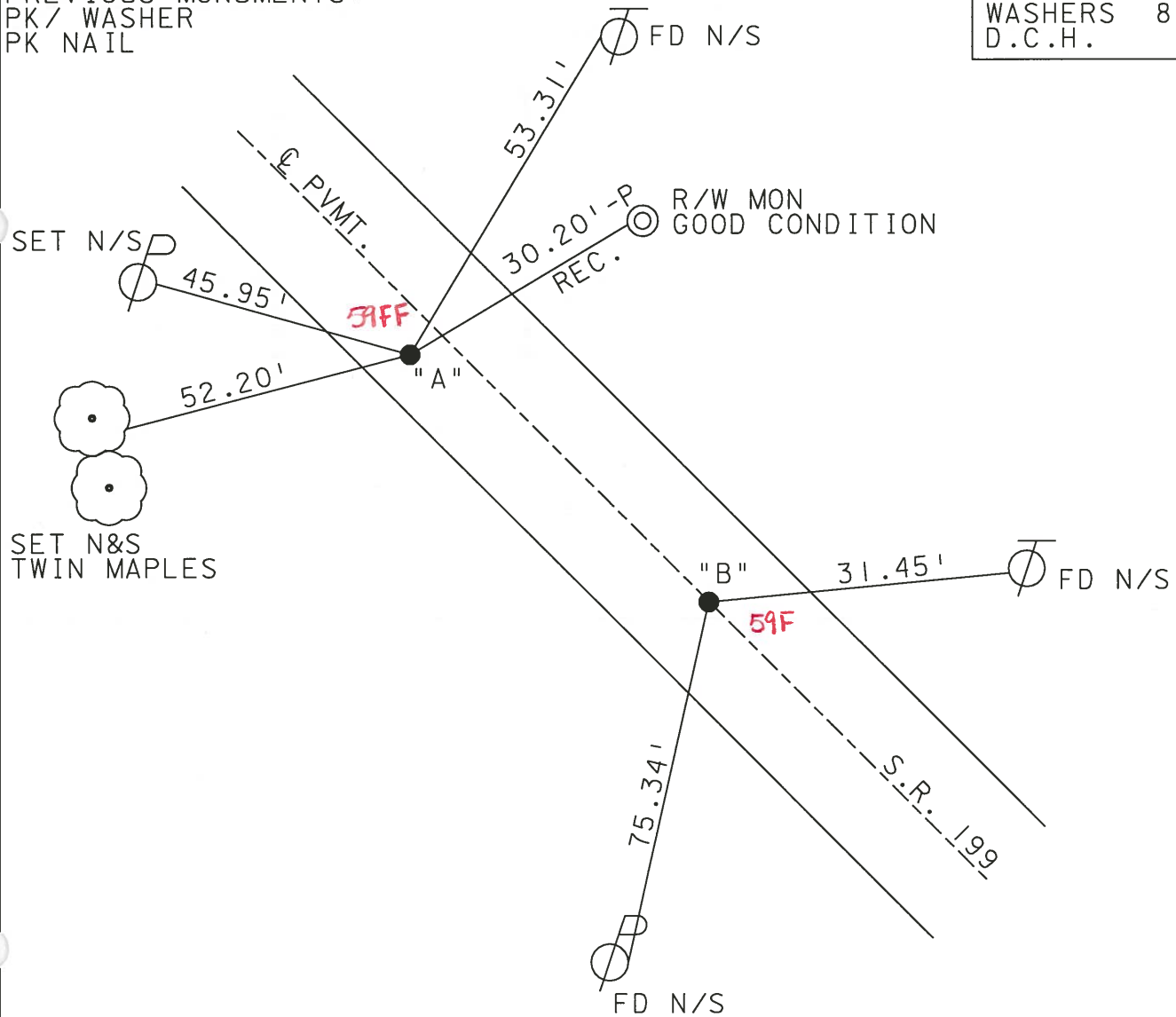
A=6.5' TO W EDGE PAVEMENT

S.L.M. A=1132+54 B=1131+38



PREVIOUS MONUMENTS:  
PK / WASHER  
PK NAIL

SET PK NAIL &  
WASHERS 8-8-02  
D.C.H.



O.D.O.T. DISTRICT 2 SURVEY OFFICE

PERSONNEL

REFERENCE NO. 59-F SHEET 20 OF 26

NOTES CHEHEY

H.C. BARBOUR

R.C. GEYMAN

DATE 12-13-1991

WEATHER CLOUDY

TEMP. 50°

ROUTE 199

COUNTY WOOD

TOWNSHIP WEBSTER

SECTION 36

T6 N R 11 E

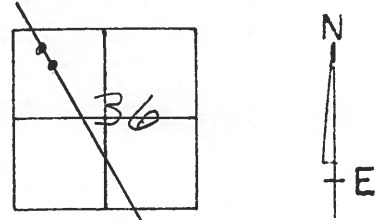
TYPE MONUMENT SET PK/WASHERS

ON SURFACE - BELOW

LEFT - & PAV'T. - RIGHT "B" ON "A" 3.5' LT.

4" 6.5' TO W. EDGE PAVEMENT

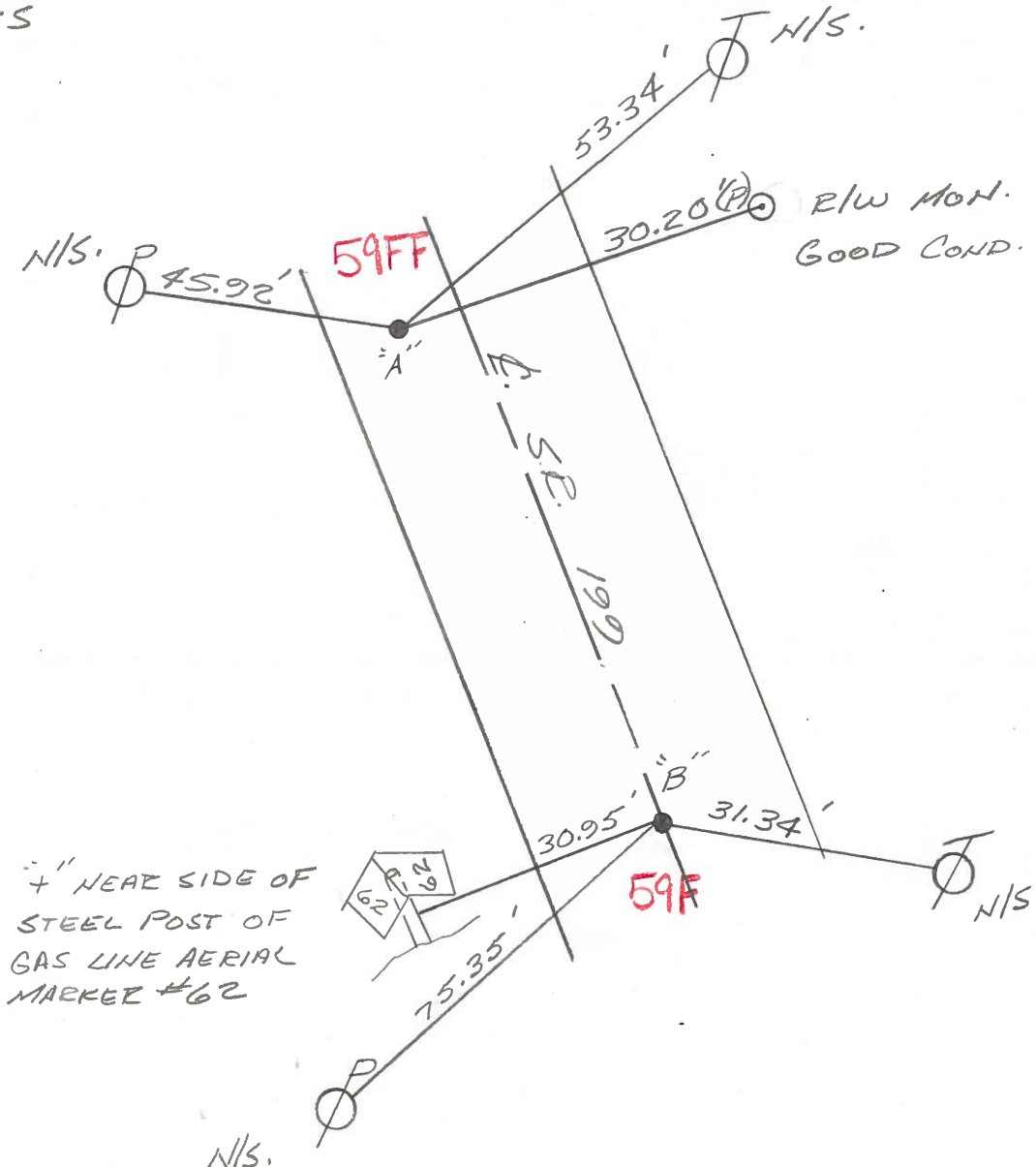
S.L.M. "A" = 1130+77, "B" = 1129+61



PREVIOUS MONUMENTS:

PKs/WASHERS

P.K. NAILS



QD.O.T. DISTRICT 2 SURVEY OFFICE

SHEET \_\_\_\_\_ OF \_\_\_\_\_

County WOOD S. R. 199

Date 1-4-83

Township WEBSTER

Weather CLEAR - Windy

Section 36

Temp. +36°

T6N, R11E

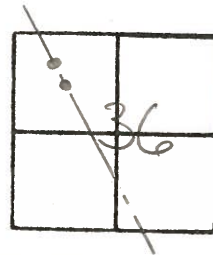
Personnel HOFFMANN

LOHRICE

HOUSEHOLDER

BARNHISEL

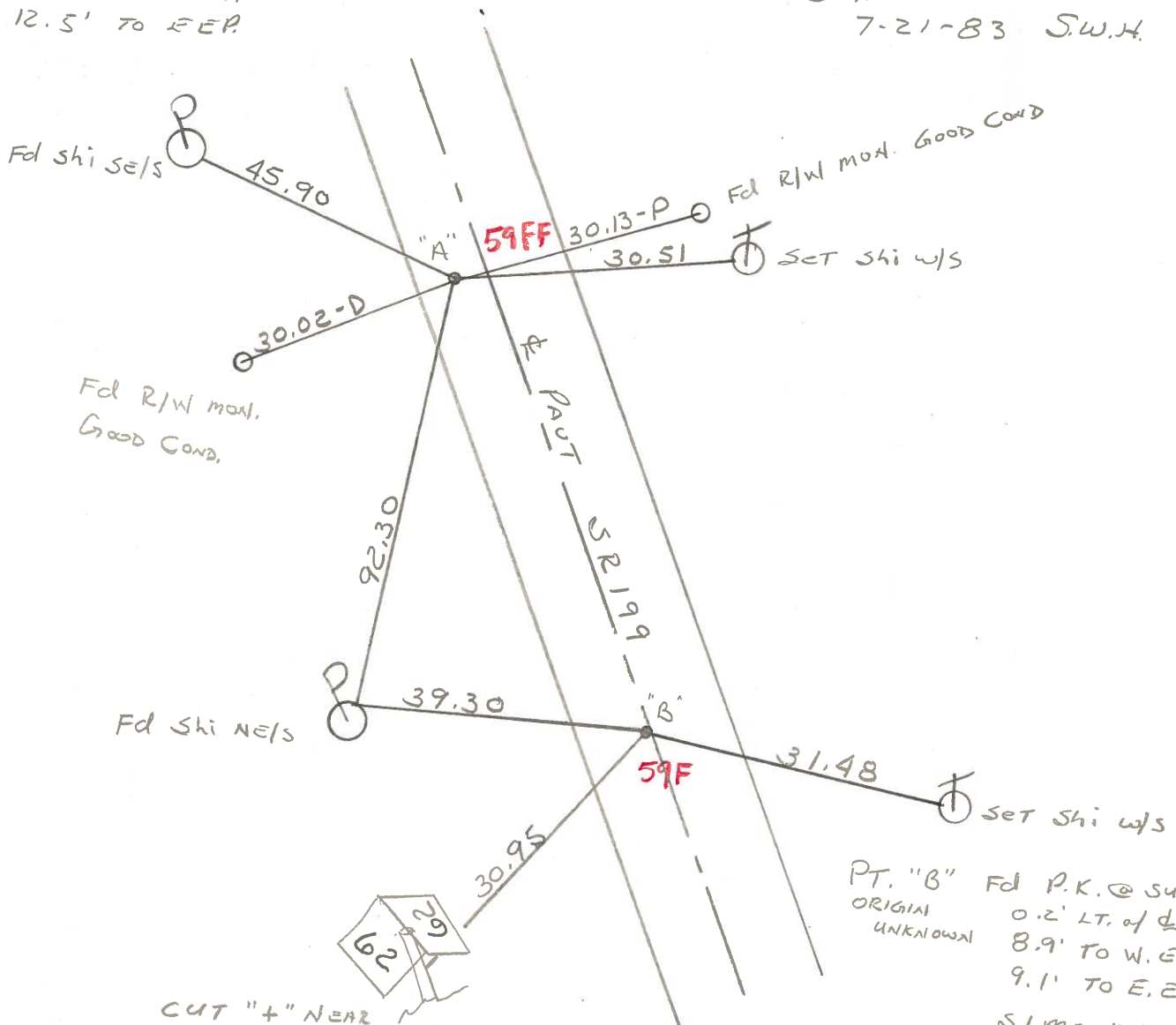
#59-F



PT. "A" Fd P.K. @ surface S.L.M. 1132 + 35

3.1' LT. of PAUT  
5.5' TO W.E.P.  
12.5' TO E.E.P.

SET P.K./WASHER  
@ BOTH POINTS  
7-21-83 S.W.H.



Fd R/W Mon.  
Good Cond.

Fd Shi Nels



CUT "+" NEAR  
SIDE STEEL POST OF  
GAS LINE AERIAL  
MARKER #62

PT. "B" Fd P.K. @ surface  
ORIGINAL UNKNOWN  
0.2' LT. of PAUT  
8.9' TO W.E.P.  
9.1' TO E.E.P.  
S.L.M. = 1131 + 19