

O.D.O.T. DISTRICT 2 SURVEY OFFICE (USE ONLY)

PERSONNEL

REFERENCE NO. 59 FF

SHEET 41 OF 75

NOTES FARKAS  
 H.C. RHOADES  
 R.C. FARKAS

DATE 12-20-17  
 WEATHER SUNNY  
 TEMP. 27°

ROUTE SR 199  
 COUNTY WOOD  
 TOWNSHIP WEBSTER  
 SECTION 36  
 T 6 N R 11 E

DWG BY AUBLE PID 101221

TYPE MONUMENT MAG/WASHER

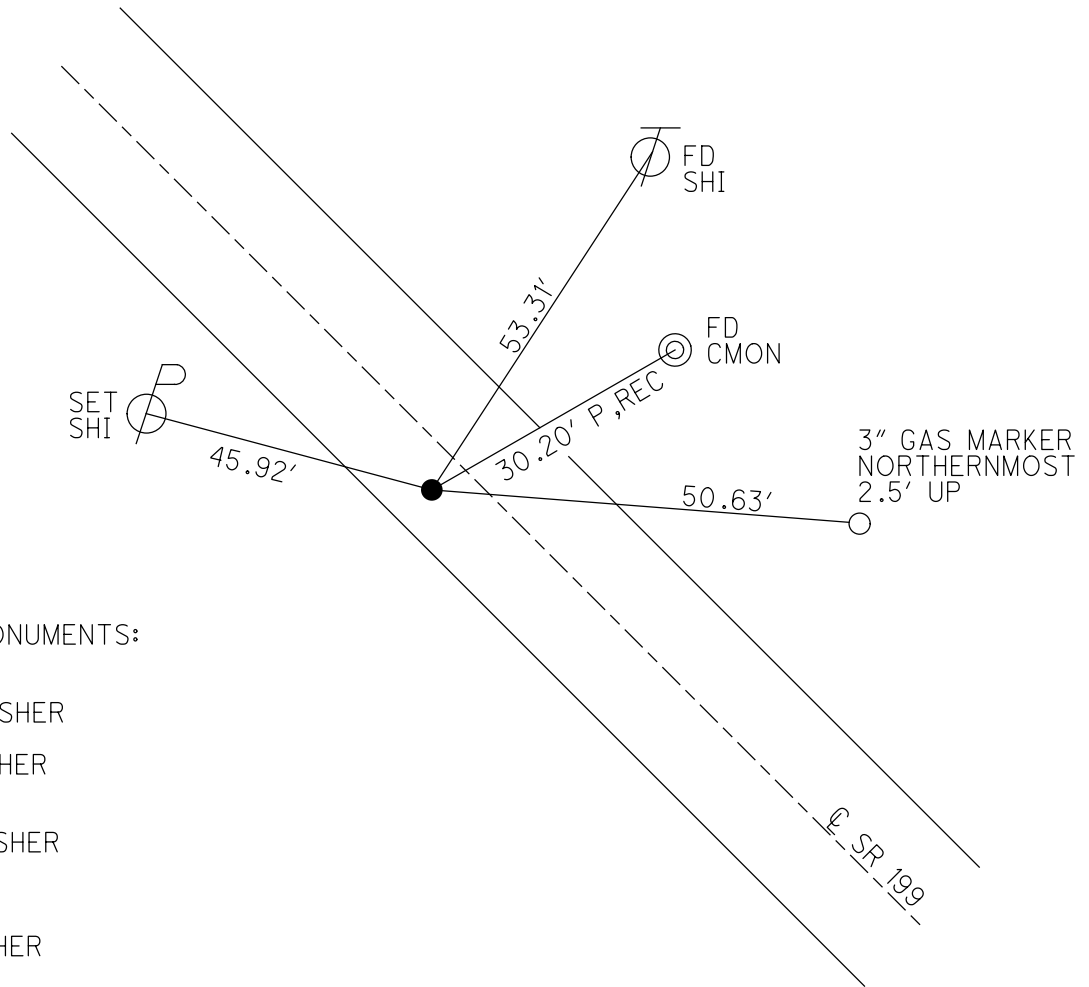
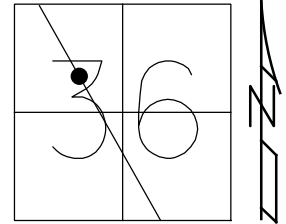
ON SURFACE - ~~BELOW~~ ON

OFFSET  $\varnothing$  PAVEMENT 3.8' LT : ~~RT~~  
6.5' TO W EDGE PAVEMENT

STATION: 1132+54

HORZ.DATUM: NAD83 (2011) GEOID: 2012A

GRID: NORTHING: 647730.776 EASTING: 1681031.661

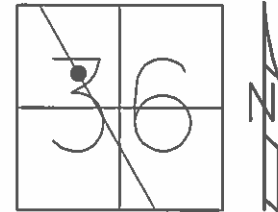


RECORD:  
 PREVIOUS MONUMENTS:  
 P.K./WASHER  
 P.K.NAIL  
 SET P.K./WASHER  
 8/8/02, DCH  
 FD P.K./WASHER  
 SVH59  
 7/21/11, MC  
 SET MAG/WASHER  
 12/7/11, MC  
 REFH59  
 SAH, 12/9/11  
 FD MAG/WASHER  
 REFFF59  
 12/20/17, JMR  
 5-24-19, JLL

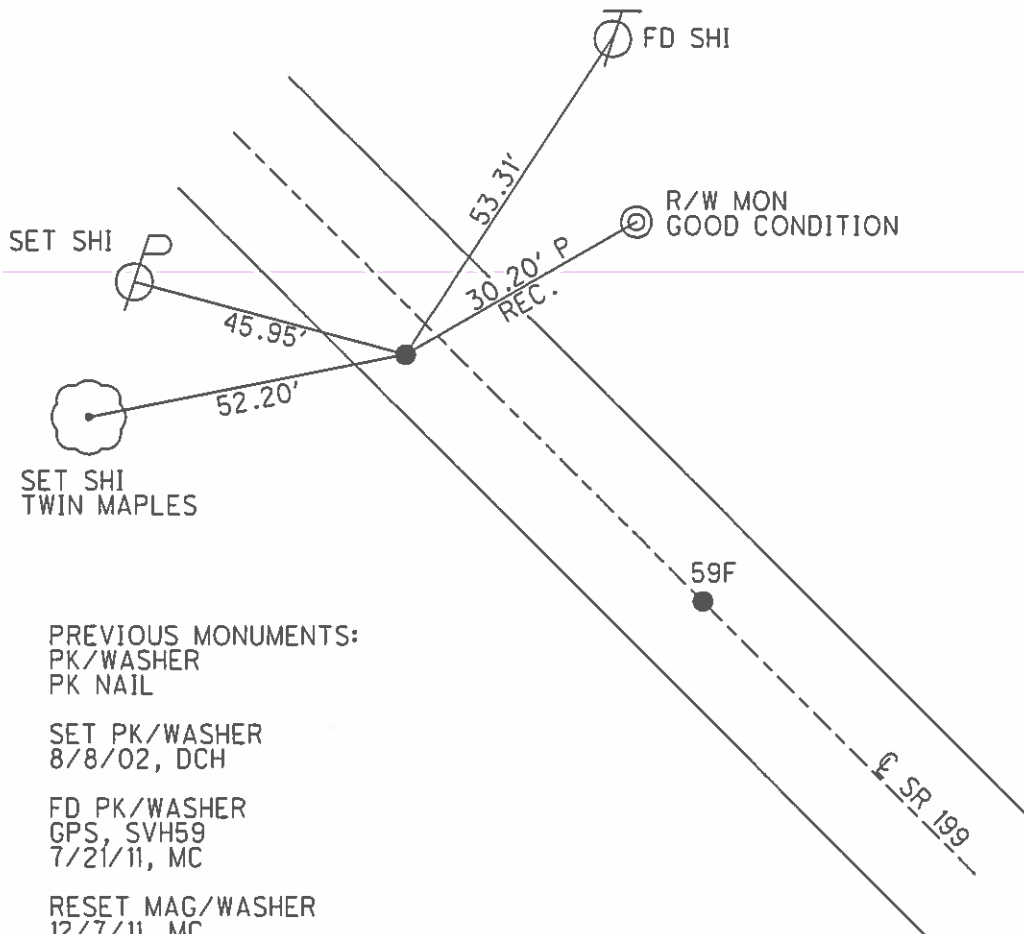
**O.D.O.T. DISTRICT 2 SURVEY OFFICE (USE ONLY)**

PERSONNEL \_\_\_\_\_ REFERENCE NO. 59 FF SHEET 40 OF 72  
 NOTES FINGER DATE 7/21/11 ROUTE SR 199  
 H.C. HUSS WEATHER SUNNY COUNTY WOOD  
 R.C. CANTERBURY TEMP. 100° TOWNSHIP WEBSTER  
 SECTION 36  
T 6 N R 11 E

TYPE MONUMENT PK/WASHER  
 ON SURFACE - ~~BELOW~~ ON  
 LEFT - ~~C PAV'T~~ - ~~RIGHT~~ 3.8'  
6.5' TO W EDGE PAVEMENT  
 S.L.M. 1132+54



GRID: NORTHING: 647730.785 EASTING: 1681031.632



PREVIOUS MONUMENTS:  
 PK/WASHER  
 PK NAIL

SET PK/WASHER  
 8/8/02, DCH

FD PK/WASHER  
 GPS, SVH59  
 7/21/11, MC

RESET MAG/WASHER  
 12/7/11, MC

FINAL GPS  
 REFH59  
 SAH, 12/9/11

O.D.O.T. DISTRICT 2 SURVEY OFFICE

PERSONNEL \_\_\_\_\_

REFERENCE NO. 59F

SHEET 20 OF 45

NOTES ROUSOS

DATE 4-2-02

ROUTE S.R. 199

H.C. HOMAN

WEATHER CLOUDY

COUNTY WOOD

R.C. ROUSOS

TEMP. 60

TOWNSHIP WEBSTER

SECTION 36

T 6 N R 11 E

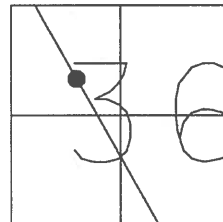
TYPE MONUMENT P.K. & WASHER

ON SURFACE - ~~BELOW~~ YES

LEFT - Q PAV'T - RIGHT "B" Q "A" LT.

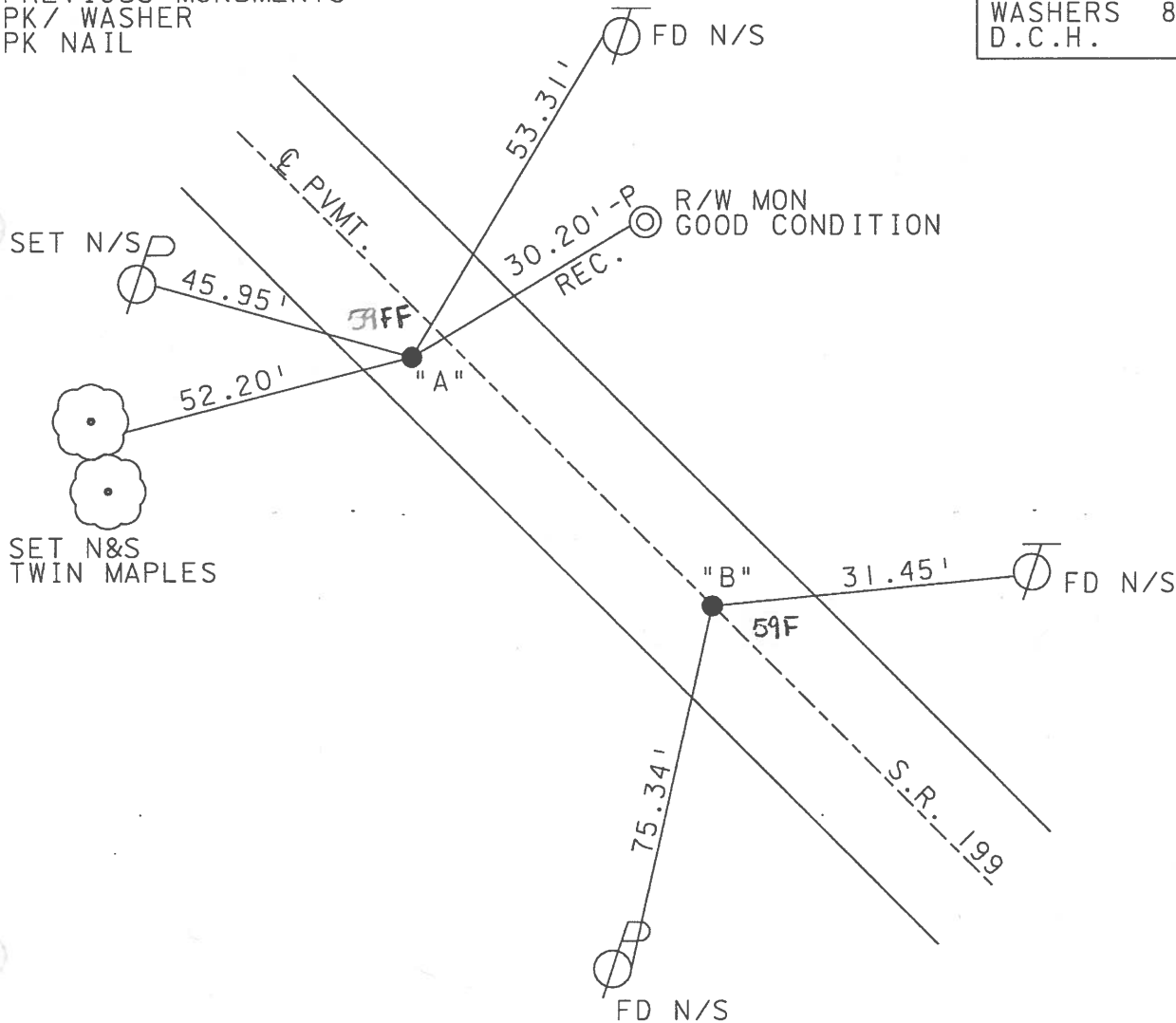
A=6.5' TO W EDGE PAVEMENT

S.L.M. A=1132+54 B=1131+38



PREVIOUS MONUMENTS:  
PK/WASHER  
PK NAIL

SET PK NAIL &  
WASHERS 8-8-02  
D.C.H.



# O.D.O.T. DISTRICT 2 SURVEY OFFICE

PERSONNEL

REFERENCE NO. 59-F SHEET 20 OF 26

NOTES CHEWY

H.C. BARBOUR

R.C. GEYMAN

DATE 12-13-1991

WEATHER CLOUDY

TEMP. 50°

ROUTE 199

COUNTY WOOD

TOWNSHIP WEBSTER

SECTION 36

T6 N11 E

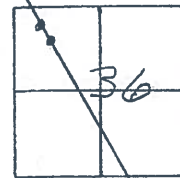
TYPE MONUMENT SET PK/WASHERS

ON SURFACE - BELOW

~~LEFT - C. PAV'T. - RIGHT~~ "B" ON "A" 3.5' LT.

4" 6.5' TO W. EDGE PAVEMENT

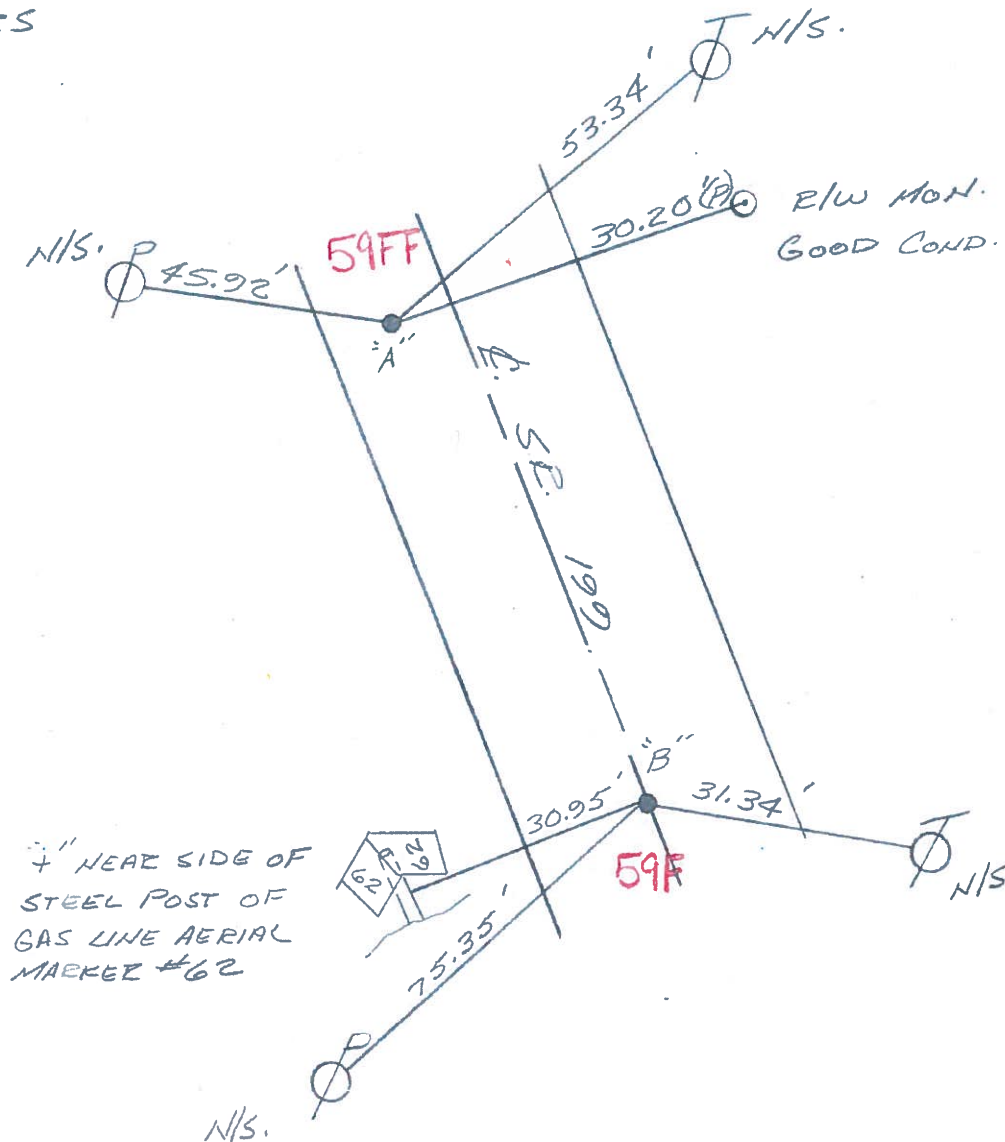
S.L.M. "A" = 1130+77, "B" = 1129+61



PREVIOUS MONUMENTS:

PKs/WASHERS

P.K. NAILS



Q.D.O.T. DISTRICT 2 SURVEY OFFICE

SHEET \_\_\_\_\_ OF \_\_\_\_\_

County Wood S.R. 199

Date 1-4-83

Township WEBSTER

Weather Clear - Windy

Section 36

Temp. +36°

T6N, R11E

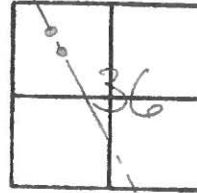
Personnel HOFFMAN

LOHRICE

HOUSEHOLDER

BARNHISEL

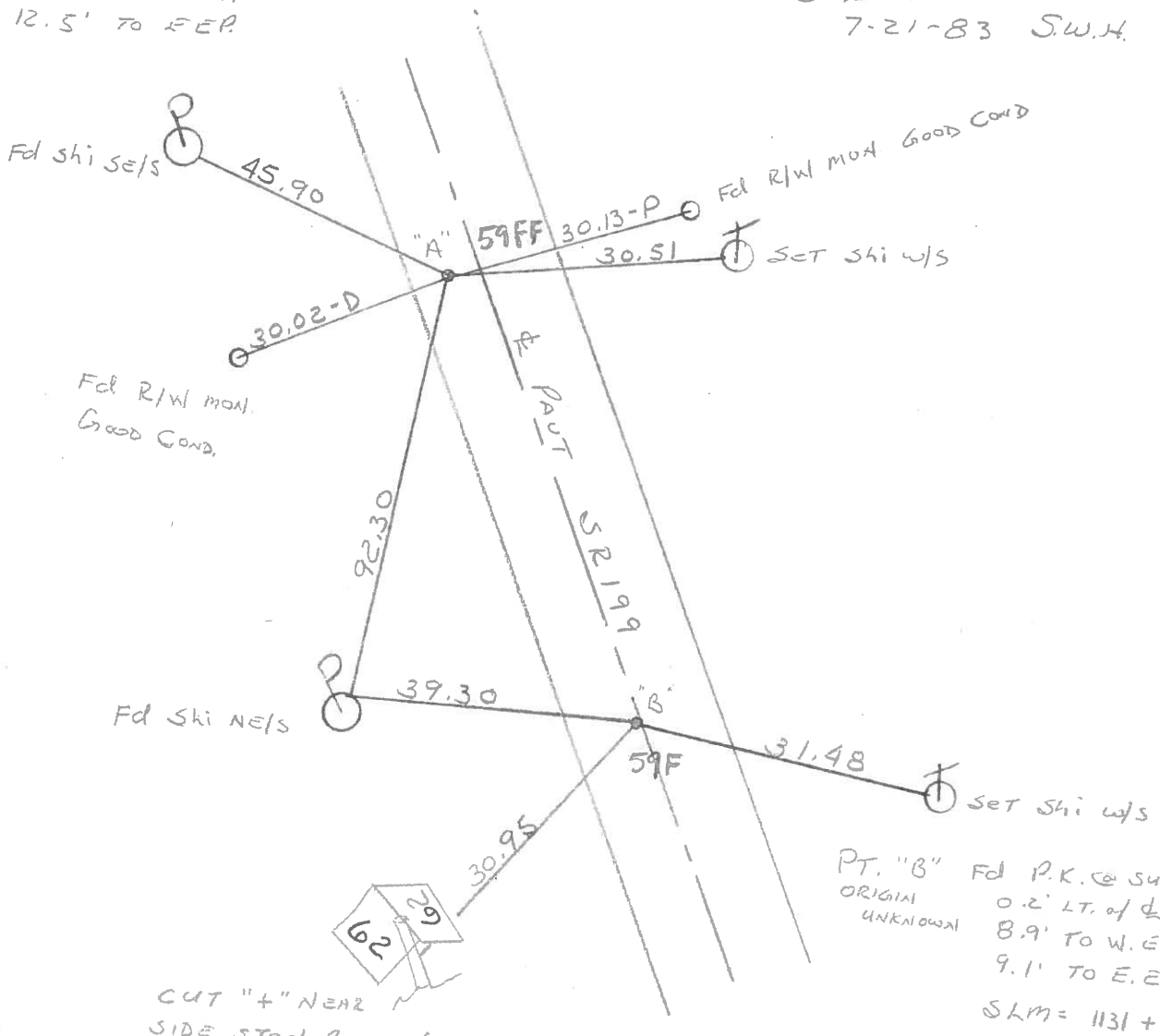
#59-F



PT. "A" Fd P.K. @ surface S.L.M. 1132 + 35

3.1' LT. of PAUT  
5.5' TO W.E.P.  
12.5' TO F.E.P.

SET P.K./WASHER  
@ BOTH POINTS  
7-21-83 S.W.H.



CUT "+" NEAR  
SIDE STEEL POST of  
GAS LINE AERIAL  
MARKER #62

PT. "B" Fd P.K. @ surface  
ORIGINAL UNKNOWN  
0.2' LT. of PAUT  
8.9' TO W.E.P.  
9.1' TO E.E.P.  
S.L.M. = 1131 + 19

O.D.O.T. DISTRICT 2 SURVEY OFFICE

SHEET \_\_\_\_\_ OF \_\_\_\_\_

County WOOD S.R. 199

Township WEBSTER

Section 36

T    N, R    E

Personnel TOM SIK

NEUSER

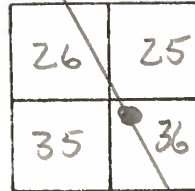
VANYO

GRANATA

Date 11-4-71 (8-22-73) <sup>CNKD</sup>

Weather \_\_\_\_\_

Temp. \_\_\_\_\_



59 ~~FF~~

POINT IS 1300'± SOUTH OF DEVILS HOLE RD.

