

O.D.O.T. DISTRICT 2 SURVEY OFFICE (USE ONLY)

PERSONNEL

REFERENCE NO. 59 G

SHEET 42 OF 75

NOTES FARKAS DATE 12-20-17

H.C. RHOADES WEATHER FAIR

R.C. FARKAS TEMP. 27°

ROUTE SR 199

COUNTY WOOD

TOWNSHIP WEBSTER

SECTION 36

DWG BY AUBLE PID 101221

T 6 N R 11 E

TYPE MONUMENT MAG/WASHER

ON SURFACE - ~~BELOW~~ ON

OFFSET ☉ PAVEMENT 3.5' LT : ~~RT~~

6.5' TO W EDGE PAVEMENT

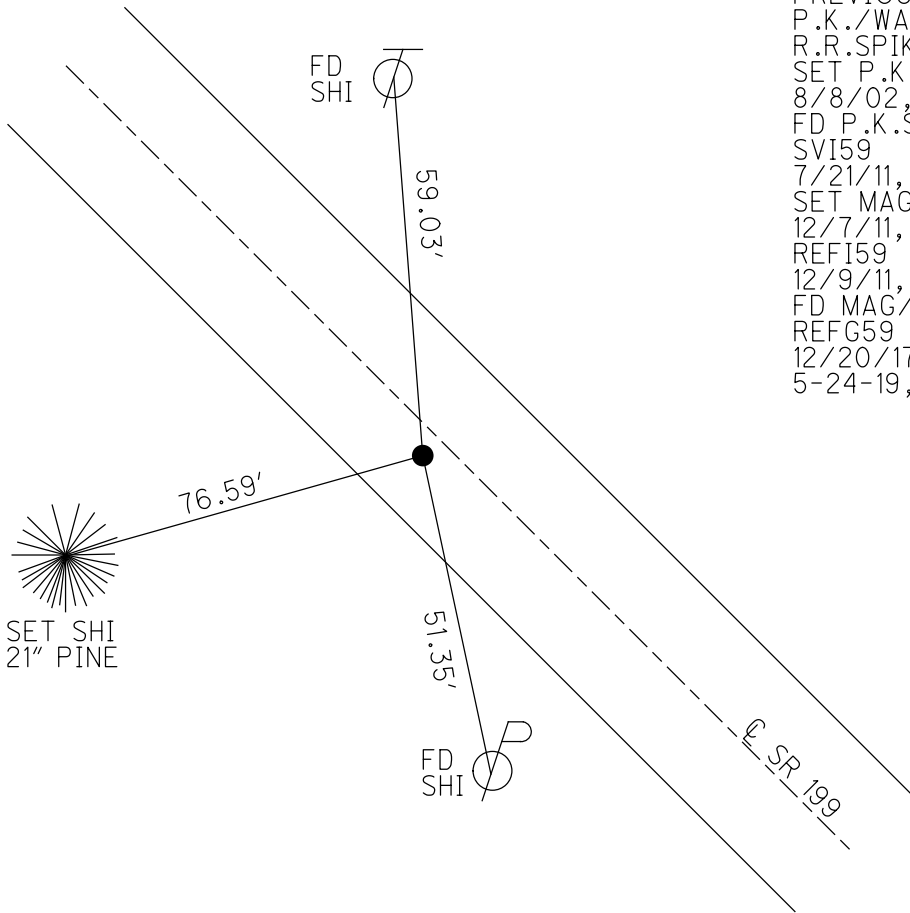
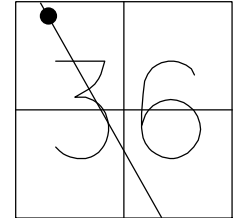
STATION: 1135+95

HORZ.DATUM: NAD83 (2011)

GEOID: 2012A

GRID: NORTHING: 648038.889

EASTING: 1680885.846

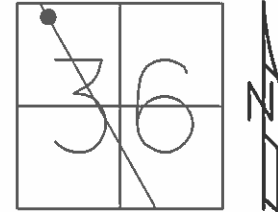


- RECORD:
 PREVIOUS MONUMENTS:
 P.K./WASHER
 R.R.SPIKE
 SET P.K./WASHER
 8/8/02, DCH
 FD P.K.SHANK
 SVI59
 7/21/11, MC
 SET MAG/WASHER
 12/7/11, MC
 REF159
 12/9/11, SAH
 FD MAG/WASHER
 REFG59
 12/20/17, JMR
 5-24-19, JLL

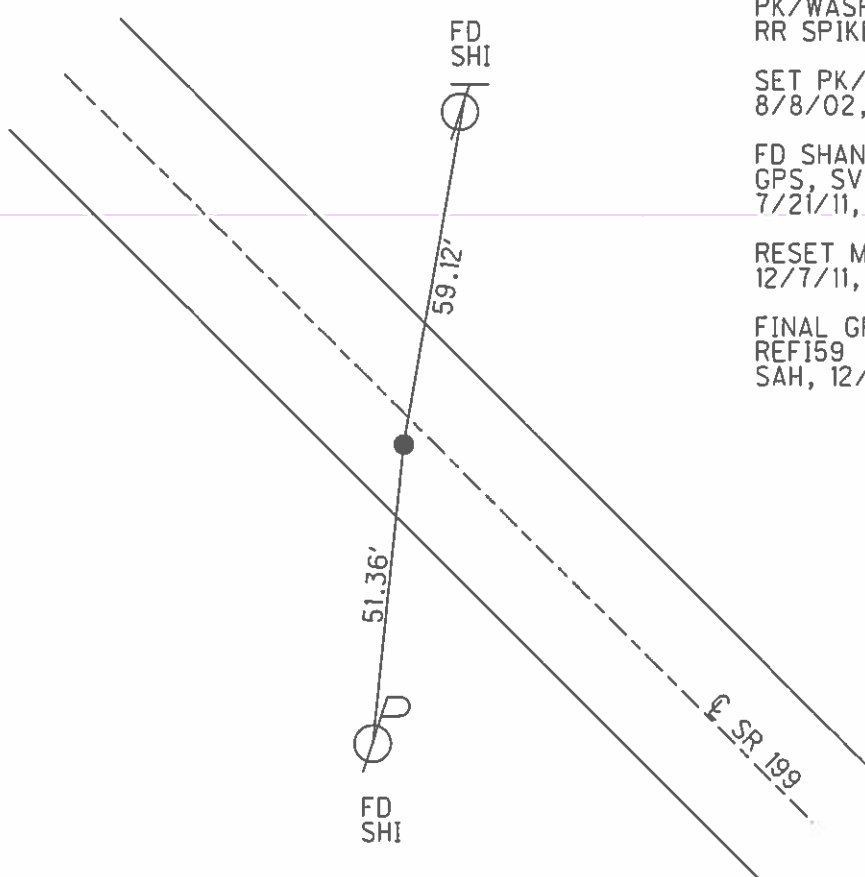
O.D.O.T. DISTRICT 2 SURVEY OFFICE (USE ONLY)

PERSONNEL _____ REFERENCE NO. 59 G SHEET 41 OF 72
 NOTES FINGER DATE 7/21/11 ROUTE SR 199
 H.C. HUSS WEATHER SUNNY COUNTY WOOD
 R.C. CANTERBURY TEMP. 100° TOWNSHIP WEBSTER
 _____ SECTION 36
 _____ T 6 N R 11 E

TYPE MONUMENT _____ PK/WASHER _____
 ON SURFACE - ~~BELOW~~ _____ ON _____
 LEFT - ~~C~~ PAV'T - ~~RIGHT~~ _____ 3.5'
6.5 TO W EDGE PAVEMENT
 S.L.M. _____ 1135+95



GRID: NORTHING: 648038.952 EASTING: 1680885.776



PREVIOUS MONUMENTS:
 PK/WASHER
 RR SPIKE

SET PK/WASHER
 8/8/02, DCH

FD SHANK
 GPS, SVI59
 7/21/11, MC

RESET MAG/WASHER
 12/7/11, MC

FINAL GPS
 REF159
 SAH, 12/9/11

O.D.O.T. DISTRICT 2 SURVEY OFFICE

PERSONNEL

REFERENCE NO. 59G

SHEET 21 OF 45

NOTES ROUSOS

DATE 4-2-02

ROUTE S.R. 199

H.C. HOMAN

WEATHER CLOUDY

COUNTY WOOD

R.C. ROUSOS

TEMP. 60

TOWNSHIP WEBSTER

SECTION 36

T 6 N R 11 E

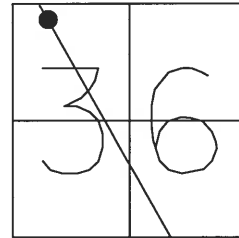
TYPE MONUMENT P.K. & WASHER

ON SURFACE - ~~BELOW~~ YES

LEFT - Q PAV'T - ~~RIGHT~~ 3.5' LT.

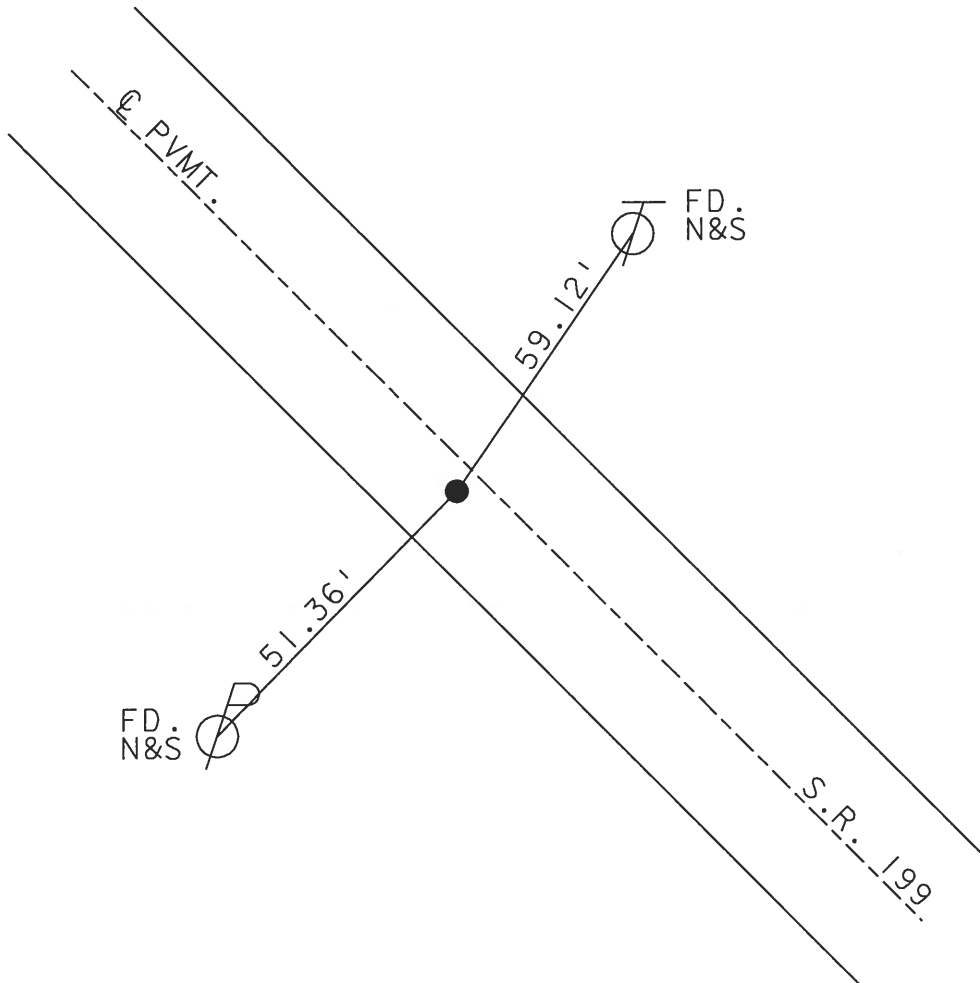
6.5 TO W EDGE PAVEMENT

S.L.M. 1135+95



PREVIOUS MONUMENTS:
PK / WASHER
R.R. SPIKE

SET PK & WASHER
8-8-02 D.C.H.



O.D.O.T. DISTRICT 2 SURVEY OFFICE

PERSONNEL

REFERENCE NO. 59-G SHEET 21 OF 26

NOTES CHENEY

H.C. BARBOUR

R.C. GEYMAN

DATE 12-13-1991

WEATHER CLOUDY

TEMP. 50°

ROUTE 199

COUNTY WOOD

TOWNSHIP WEBSTER

SECTION 36

T6 NR 11 E

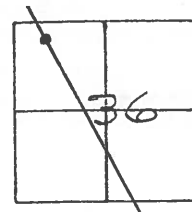
TYPE MONUMENT SET PK/WASHER

ON SURFACE - ~~BELOW~~

LEFT - 6.5' TO W. EDGE PAVEMENT

RIGHT - 3.5'

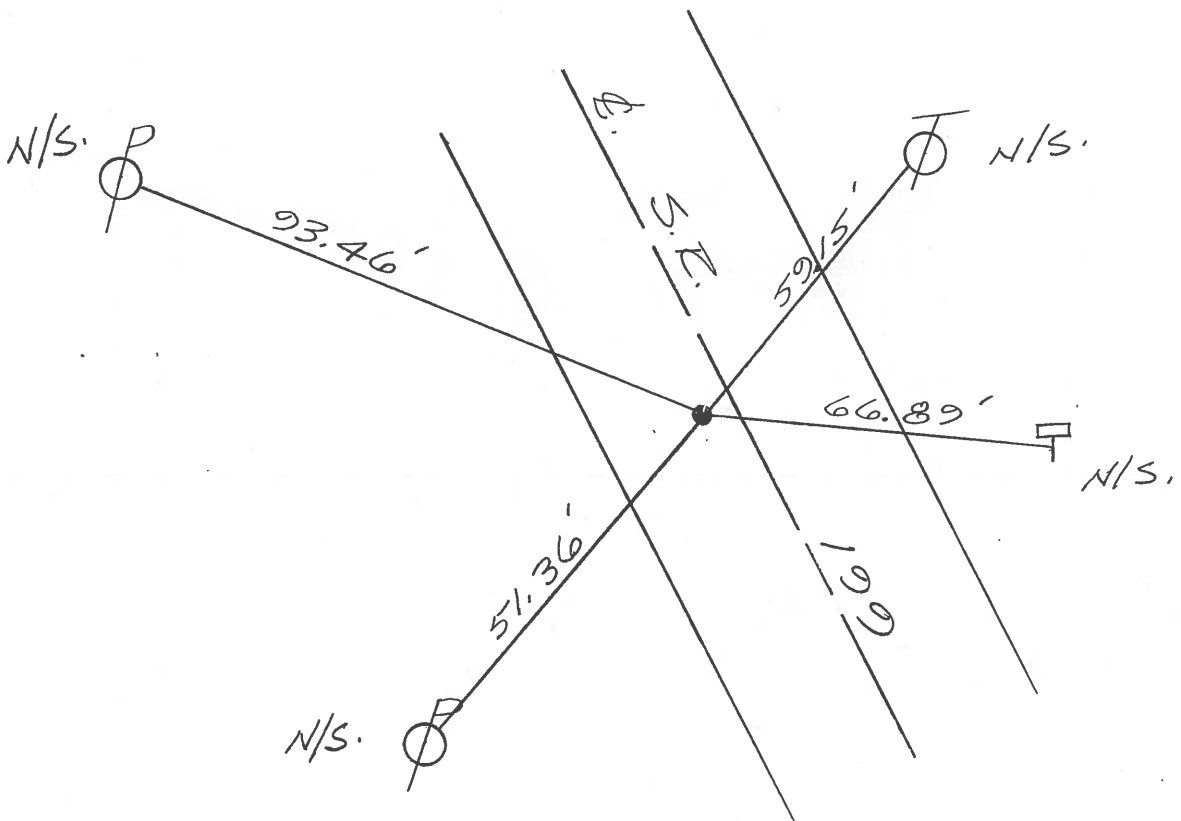
S.L.M. 1134+18



PREVIOUS MONUMENTS:

PK/WASHER

R.R. SPK.



Q.D.O.T. DISTRICT 2 SURVEY OFFICE

SHEET _____ OF _____

County WOOD S.R. 199

Date 1-4-83

Township WEBSTER

Weather CLEAR - WINDY

Section 36

Temp. +36°

T&N, RILE

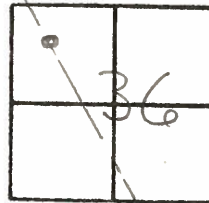
Personnel HOFFMAN

LOERKE

HOUSEHOLDER

BARNHISEL

#59-G



Fd R.R. SPK @ SURFACE, SOURCE UNKNOWN

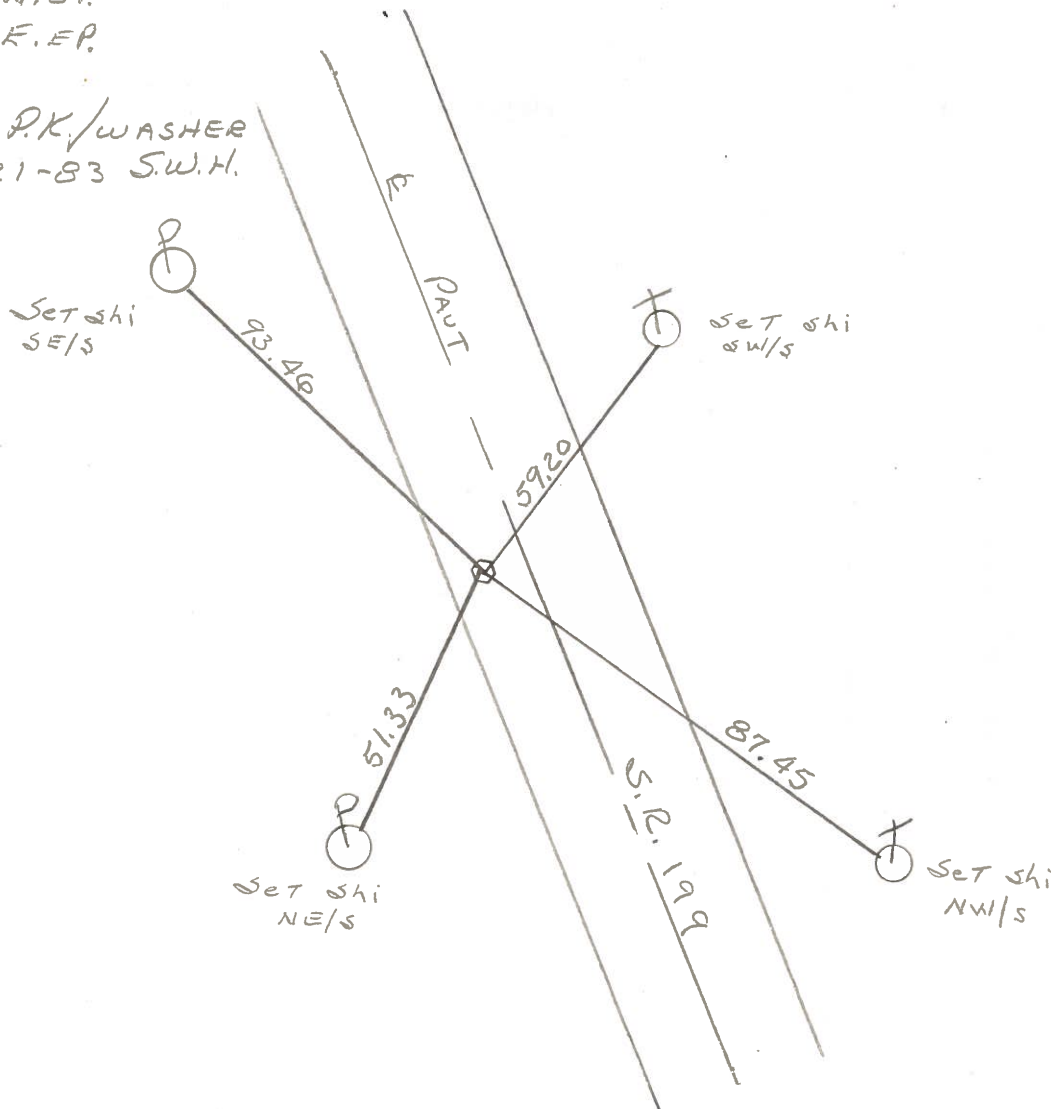
S.L.M. 1135 + 75

4.0' LT. of & PAUT

5.0' TO W.E.P.

13.0' TO E.E.P.

SET P.K./WASHER
7-21-83 S.W.H.



Set shi
SE/S

Set shi
SW/S

Set shi
NE/S

Set shi
NW/S