

O.D.O.T. DISTRICT 2 SURVEY OFFICE (USE ONLY)

PERSONNEL

REFERENCE NO. 60

SHEET 43 OF 75

NOTES FARKAS DATE 12-20-17
 H.C. RHOADES WEATHER FAIR
 R.C. FARKAS TEMP. 27°

ROUTE SR 199
 COUNTY WOOD
 TOWNSHIP WEBSTER
 SECTION 36

DWG BY AUBLE PID 101221

T 6 N R 11 E

TYPE MONUMENT MAG/WASHER

ON SURFACE - ~~BELOW~~ ON

OFFSET \varnothing PAVEMENT 4.1' LT : ~~RT~~

- TO - EDGE PAVEMENT

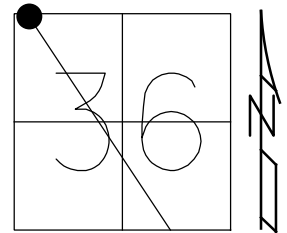
STATION: 1143+40

HORZ.DATUM: NAD83 (2011)

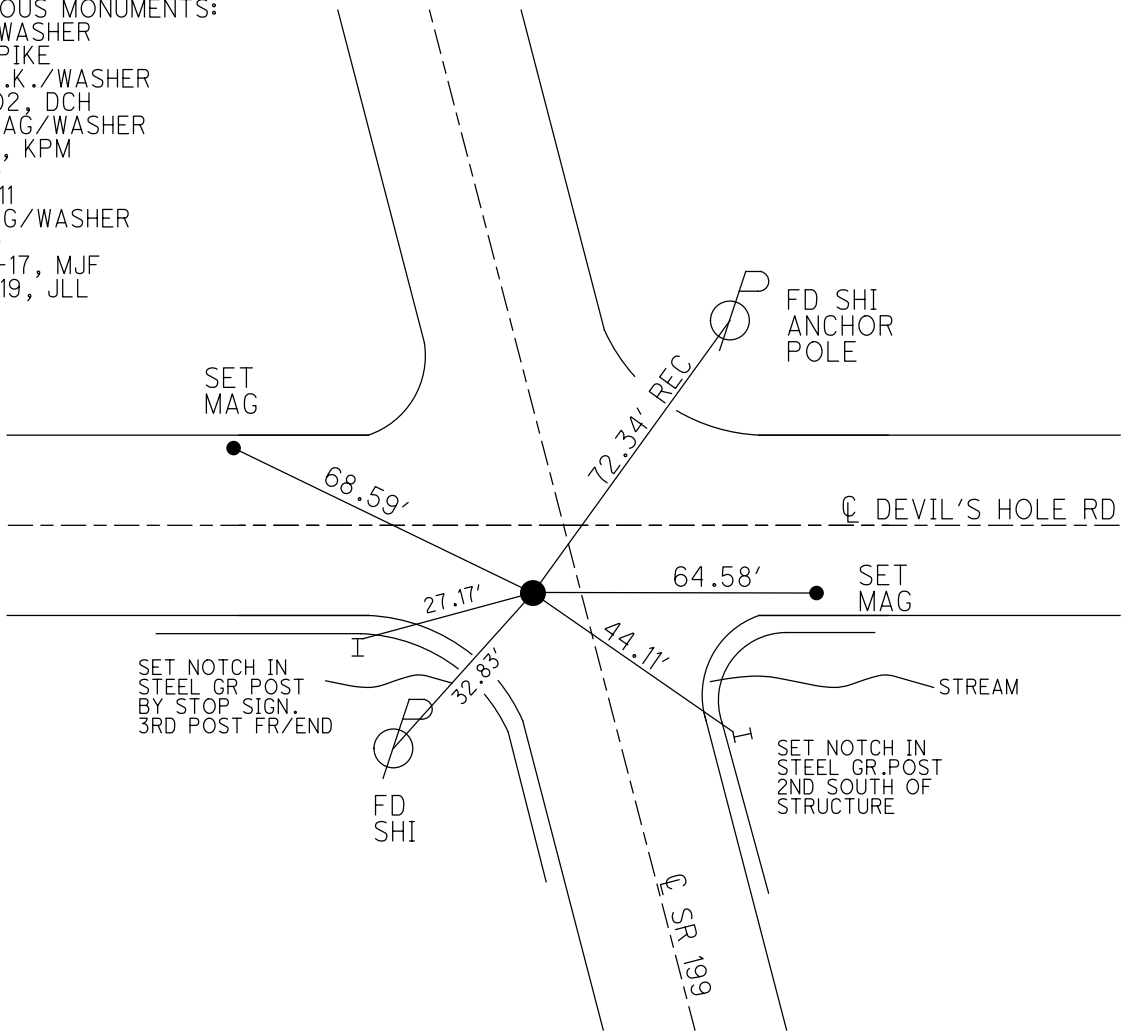
GEOID: 2012A

GRID: NORTHING: 648712.575

EASTING: 1680566.790



- RECORD:
 PREVIOUS MONUMENTS:
 P.K./WASHER
 R.R.SPIKE
 SET P.K./WASHER
 8/8/02, DCH
 SET MAG/WASHER
 9/1/11, KPM
 REF60
 12/9/11
 FD MAG/WASHER
 REF60
 12-20-17, MJF
 5-24-19, JLL



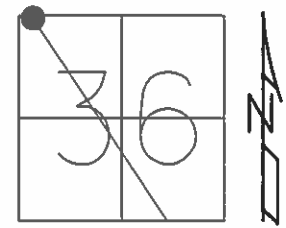
O.D.O.T. DISTRICT 2 SURVEY OFFICE (USE ONLY)

PERSONNEL _____ REFERENCE NO. 60 SHEET 42 OF 72

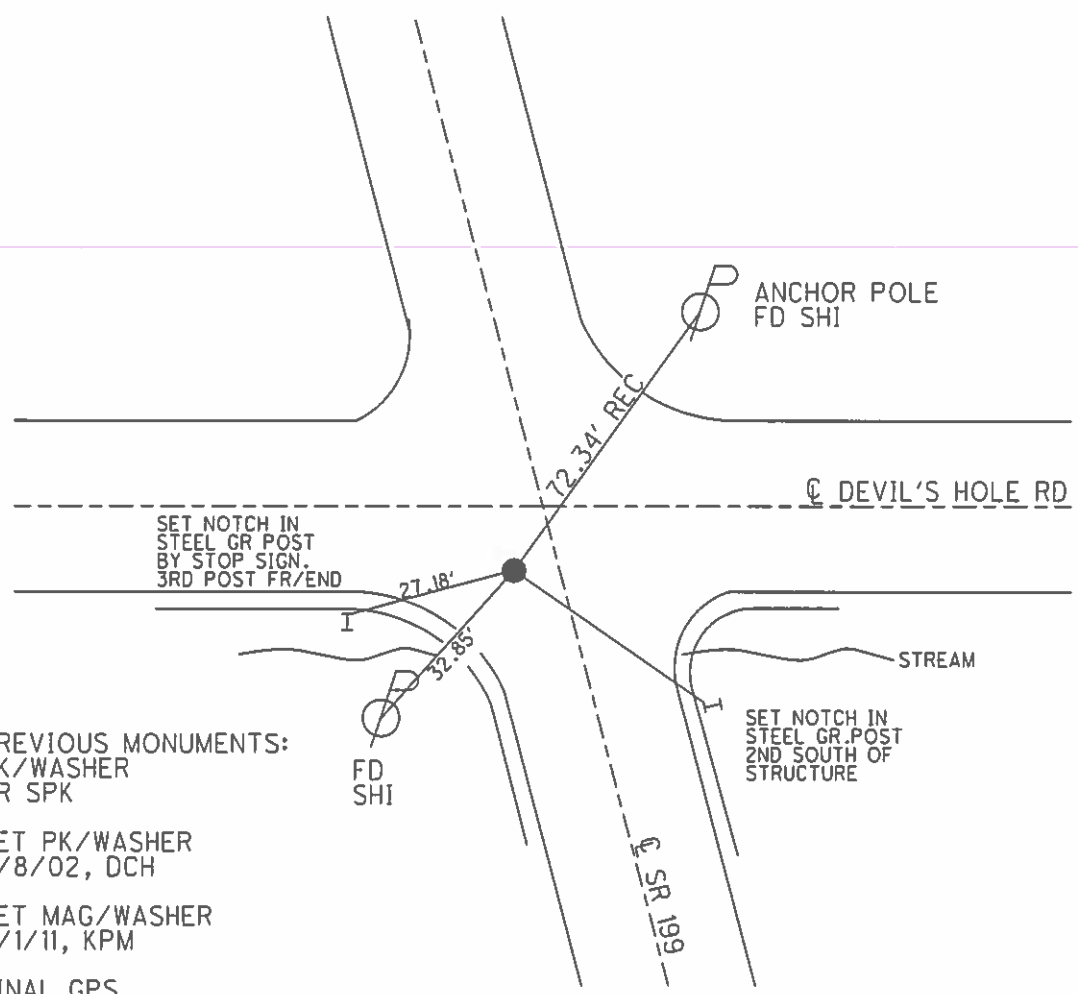
NOTES MOSER DATE 7/21/11 ROUTE SR 199
 H.C. MOSER WEATHER SUNNY COUNTY WOOD
 R.C. HARBAUGH TEMP. 100° TOWNSHIP WEBSTER

 _____ SECTION 36
 T 6 N R 11 E

TYPE MONUMENT PK/WASHER
 ON SURFACE - ~~BELOW~~ ON
 LEFT - ~~C PAV'T~~ - ~~RIGHT~~ 4.1'
 - TO EDGE PAVEMENT
 S.L.M. 1143+40



GRID: NORTHING: 648712.573 EASTING: 1680566.737



PREVIOUS MONUMENTS:
 PK/WASHER
 RR SPK

 SET PK/WASHER
 8/8/02, DCH

 SET MAG/WASHER
 9/1/11, KPM

 FINAL GPS
 REF60, 12/9/11

O.D.O.T. DISTRICT 2 SURVEY OFFICE

PERSONNEL

REFERENCE NO. 60

SHEET 22 OF 45

NOTES ROUSOS

DATE 4-2-02

ROUTE 199

H.C. HOMAN

WEATHER CLOUDY

COUNTY WOOD

R.C. ROUSOS

TEMP. 60

TOWNSHIP WEBSTER

SECTION 36

T 6 N R 11 E

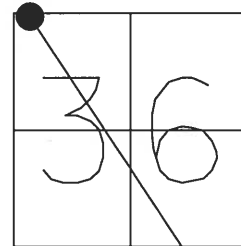
TYPE MONUMENT PK & WASHER

ON SURFACE - ~~BELOW~~ YES

LEFT - Q PAV'T - ~~RIGHT~~ 4.5' LT.

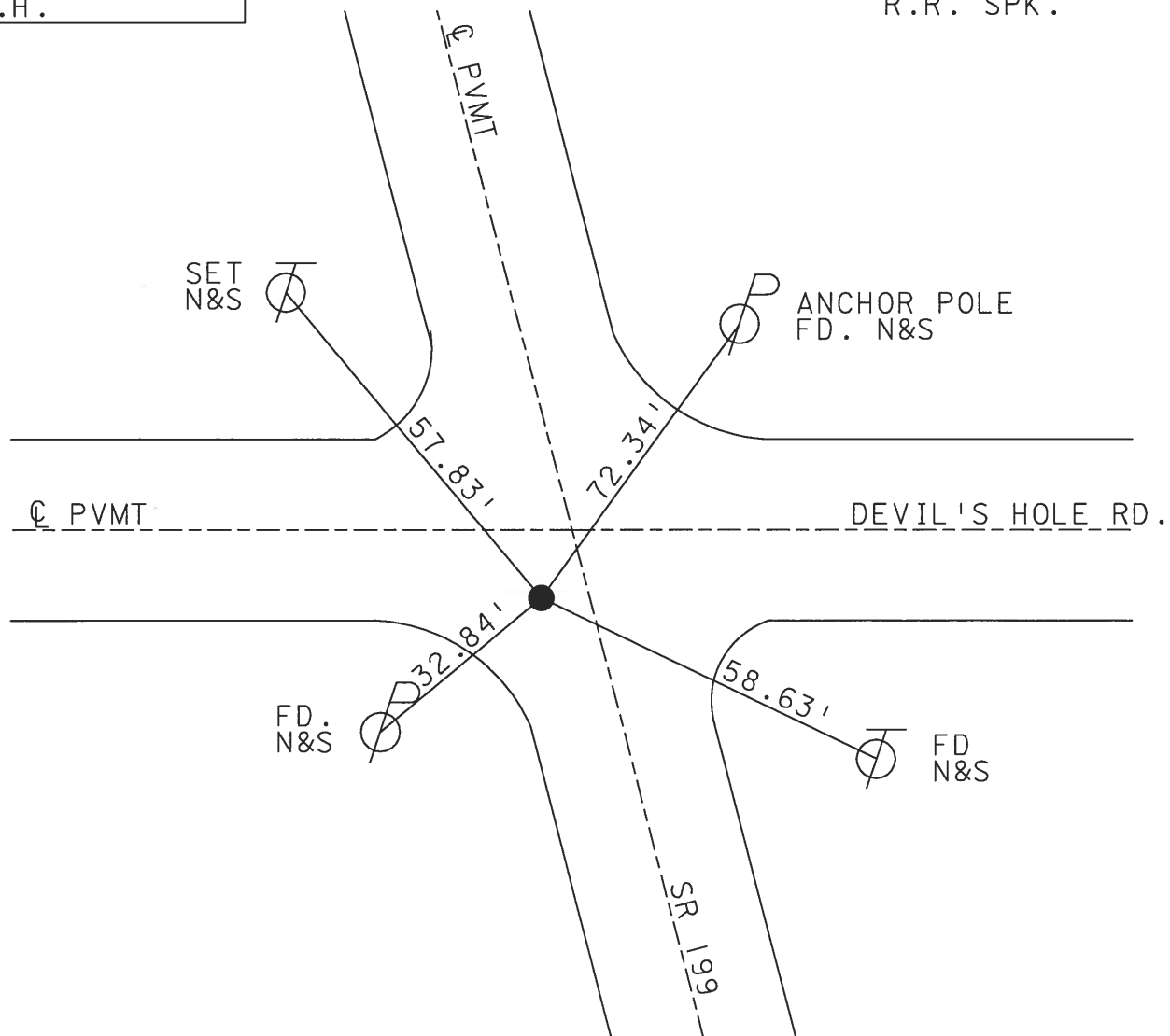
TO EDGE PAVEMENT

S.L.M. 1143+40



SET PK & WASHER
8-8-02
D.C.H.

PREVIOUS MONUMENTS:
PK & WASHER
R.R. SPK.



O.D.O.T. DISTRICT 2 SURVEY OFFICE

PERSONNEL

REFERENCE NO. 60

SHEET 22 OF 26

NOTES CHENEY

H.C. BARBOUR

DATE 12-13-1991

ROUTE 199

R.C. GEYMAN

WEATHER CLOUDY

COUNTY WOOD

TEMP. 50°

TOWNSHIP WEBSTER

SECTION 36

T 6 N R 11 E

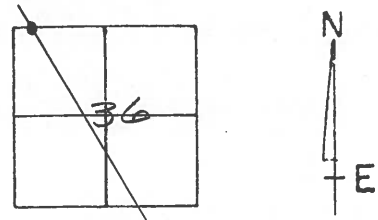
TYPE MONUMENT SET PK/WASHER

ON SURFACE - BELOW

LEFT-☉ PAV'T. - RIGHT 4.5'

— TO — EDGE PAVEMENT

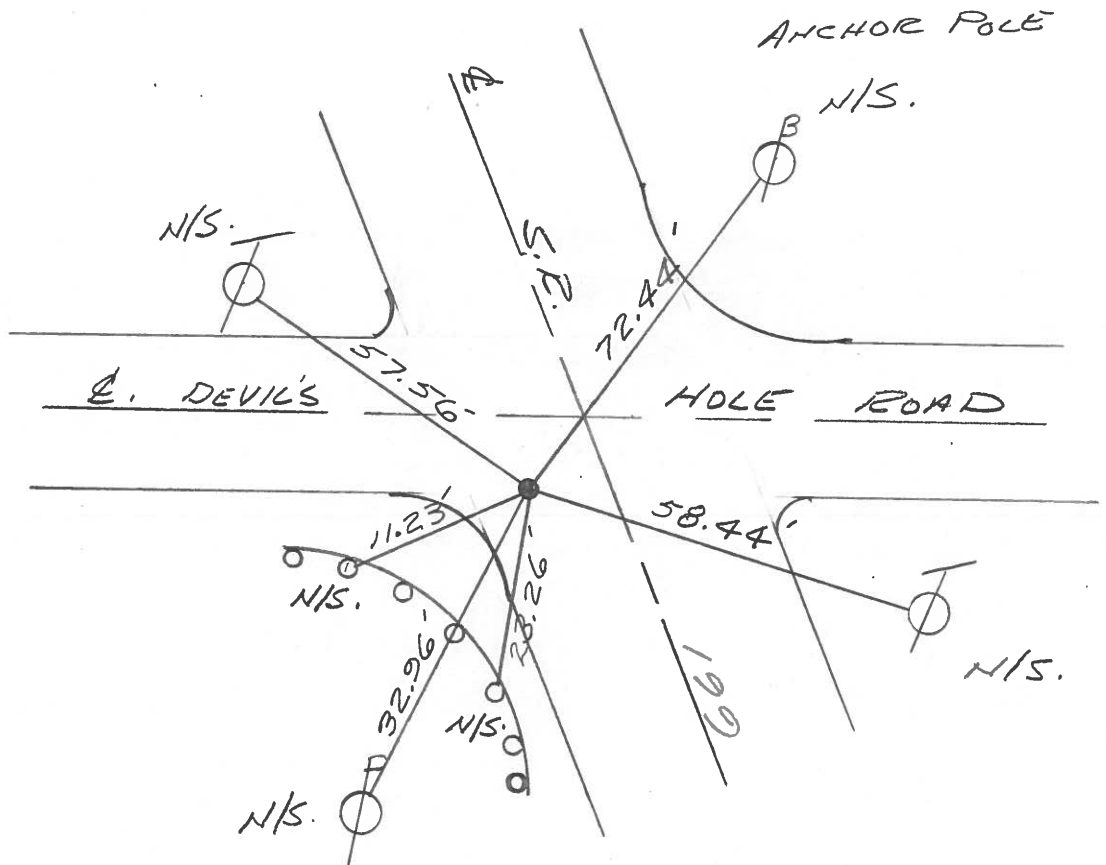
S.L.M. 1141+63



PREVIOUS MONUMENTS:

PK/WASHER

R.R. SPK.



Q.D.O.T. DISTRICT 2 SURVEY OFFICE

SHEET _____ OF _____

County WOOD S.R. 199

Date 1-4-83

Township WEBSTER

Weather CLEAR - WINDY

Section 36

Temp. +36°

T6N, R11E

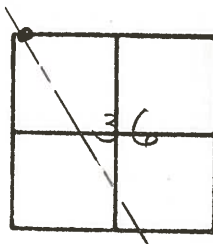
Personnel HOFFMAN

LOEHRKE

HOUSEHOLDER

BARNHISEL

#60



Fd R.R. SPK @ SURFACE
5.0' LT. of & PAUT SR199
3.0' South of S.E.P. of Devils Hole Road EAST

S.L.M. 1143+19

SET P.K./WASHER
7-21-83 S.W.H.

