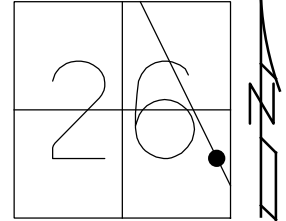


O.D.O.T. DISTRICT 2 SURVEY OFFICE (USE ONLY)

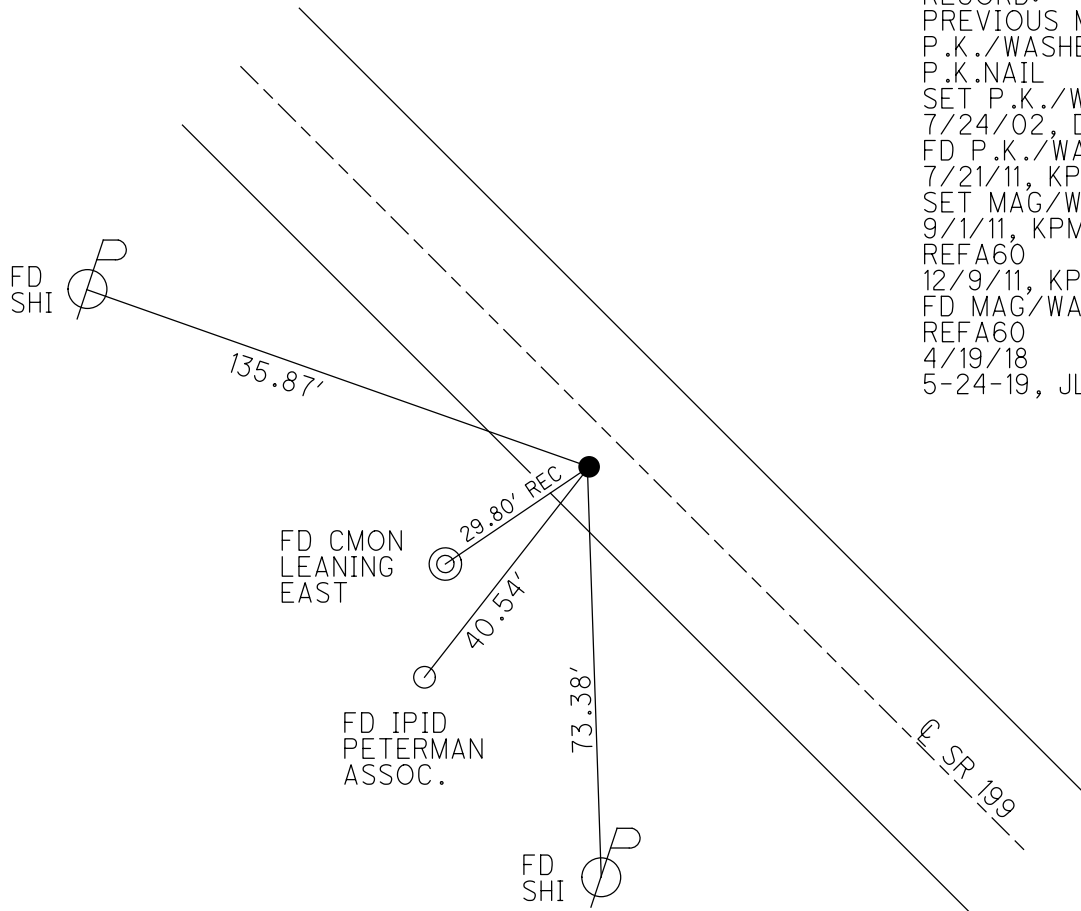
PERSONNEL \_\_\_\_\_ REFERENCE NO. 60 A SHEET 44 OF 75  
 NOTES AUBLE DATE 4-19-18 ROUTE SR 199  
 H.C. LEU WEATHER BREEZY COUNTY WOOD  
 R.C. AUBLE TEMP. 38° TOWNSHIP WEBSTER  
 DWG BY AUBLE PID 101221 SECTION 26  
 T 6 N R 11 E

TYPE MONUMENT MAG/WASHER  
 ON SURFACE - ~~BELOW~~ ON  
 OFFSET  $\odot$  PAVEMENT 5.0' LT : ~~RT~~  
5.5' TO W EDGE PAVEMENT  
 STATION: 1158+41



HORZ.DATUM: NAD83 (2011) GEOID: 2012A  
 GRID: NORTHING: 650056.408 EASTING: 1679899.347

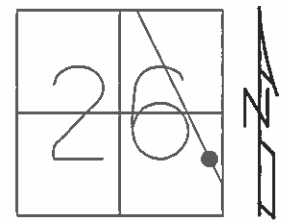
RECORD:  
 PREVIOUS MONUMENTS:  
 P.K./WASHER  
 P.K.NAIL  
 SET P.K./WASHER  
 7/24/02, DCH  
 FD P.K./WASHER  
 7/21/11, KPM  
 SET MAG/WASHER  
 9/1/11, KPM  
 REFA60  
 12/9/11, KPM  
 FD MAG/WASHER  
 REFA60  
 4/19/18  
 5-24-19, JLL



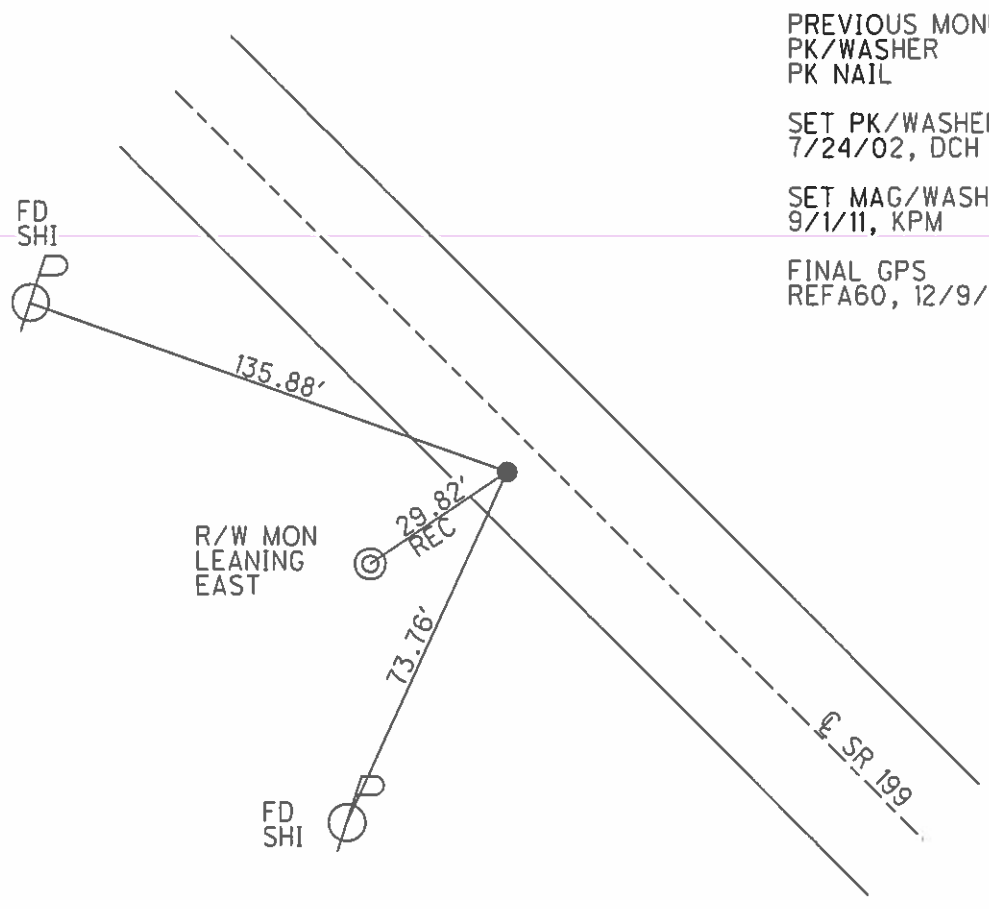
**O.D.O.T. DISTRICT 2 SURVEY OFFICE (USE ONLY)**

PERSONNEL \_\_\_\_\_ REFERENCE NO. 60 A SHEET 43 OF 72  
 NOTES MOSER DATE 7/21/11 ROUTE SR 199  
 H.C. MOSER WEATHER SUNNY COUNTY WOOD  
 R.C. HARBAUGH TEMP. 100° TOWNSHIP WEBSTER  
 \_\_\_\_\_ SECTION 26  
 \_\_\_\_\_ T 6 N R 11 E

TYPE MONUMENT \_\_\_\_\_ PK/WASHER  
 ON SURFACE - ~~BELOW~~ \_\_\_\_\_ ON  
 LEFT - ~~C PAV'T~~ - ~~RIGHT~~ \_\_\_\_\_ 4.7'  
 \_\_\_\_\_ 5.5' TO W EDGE PAVEMENT  
 S.L.M. \_\_\_\_\_ 1158+41



GRID: NORTHING: 650056.425 EASTING: 1679899.304



PREVIOUS MONUMENTS:  
 PK/WASHER  
 PK NAIL  
 SET PK/WASHER  
 7/24/02, DCH  
 SET MAG/WASHER  
 9/1/11, KPM  
 FINAL GPS  
 REFA60, 12/9/11

O.D.O.T. DISTRICT 2 SURVEY OFFICE

PERSONNEL

REFERENCE NO. 60A

SHEET 23 OF 45

NOTES ROUSOS

DATE 4-2-02

ROUTE S.R. 199

H.C. HOMAN

WEATHER CLOUDY

COUNTY WOOD

R.C. ROUSOS

TEMP. 60

TOWNSHIP WEBSTER

SECTION 26

T 6 N R 11 E

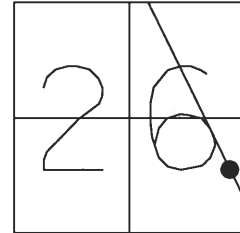
TYPE MONUMENT P.K. & WASHER

ON SURFACE - ~~BELOW~~ YES

LEFT - Q PAV'T - RIGHT 4.5' LT

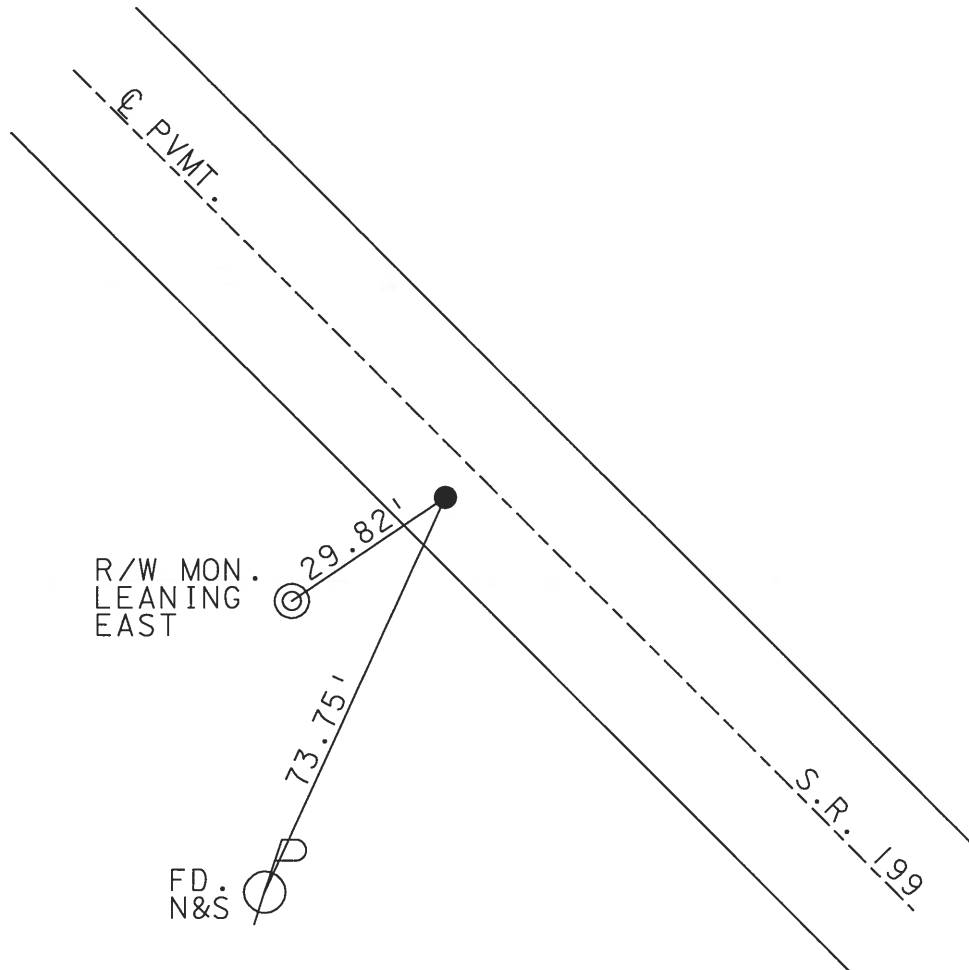
5.5' TO W EDGE PAVEMENT

S.L.M. 1158+41



PREVIOUS MONUMENTS:  
PK / WASHER  
PK NAIL

SET PK & WASHER  
7-24-02 D.C.H.



O.D.O.T. DISTRICT 2 SURVEY OFFICE

PERSONNEL

REFERENCE NO. 60-A

SHEET 23 OF 26

NOTES CHENEY

H.C. BARBOUR

DATE 12-13-1991

ROUTE 199

R.C. GEYMAN

WEATHER CLOUDY

COUNTY WOOD

TEMP. 50°

TOWNSHIP WEBSTER

SECTION 26

T6 N R 11 E

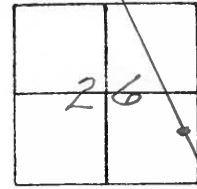
TYPE MONUMENT SET PK/WASHER

ON SURFACE - BELOW

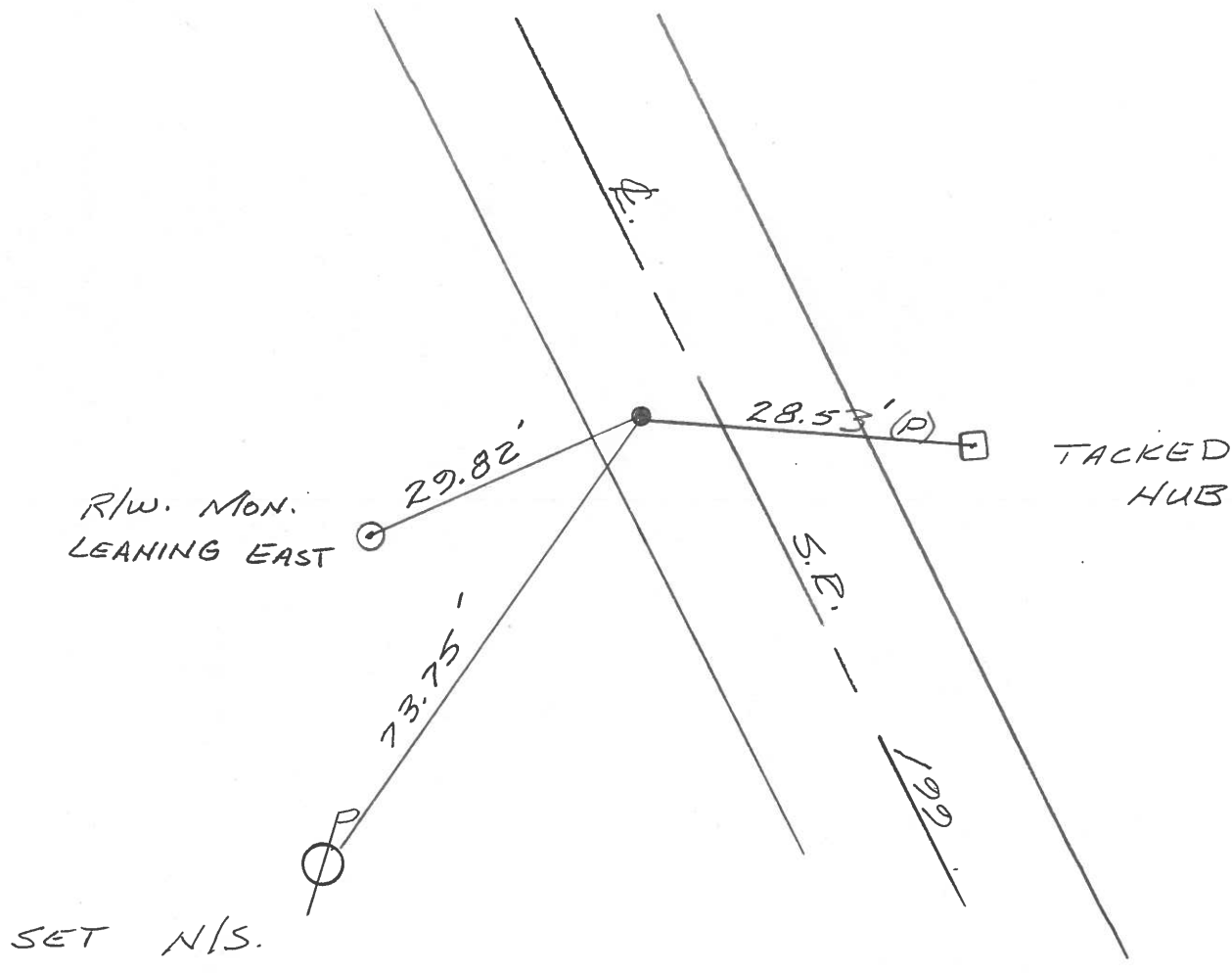
LEFT- & PAV'T. - RIGHT 4.5'

5.5' TO W. EDGE PAVEMENT

S.L.M. 1156+64



PREVIOUS MONUMENTS:  
 PK/WASHER  
 P.K. NAIL



Q.D.O.T. DISTRICT 2 SURVEY OFFICE

SHEET \_\_\_\_\_ OF \_\_\_\_\_

County WOOD S.R. 199

Township WEBSTER

Section 26

T6N, R11E

Personnel HOFFMAN

LOERKE

HOUSEHOLDER

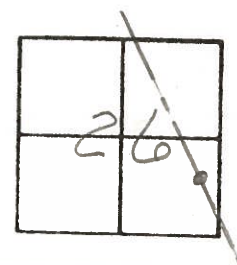
BARNHISEL

#60-A

Date 1-5-83

Weather CLOUDY

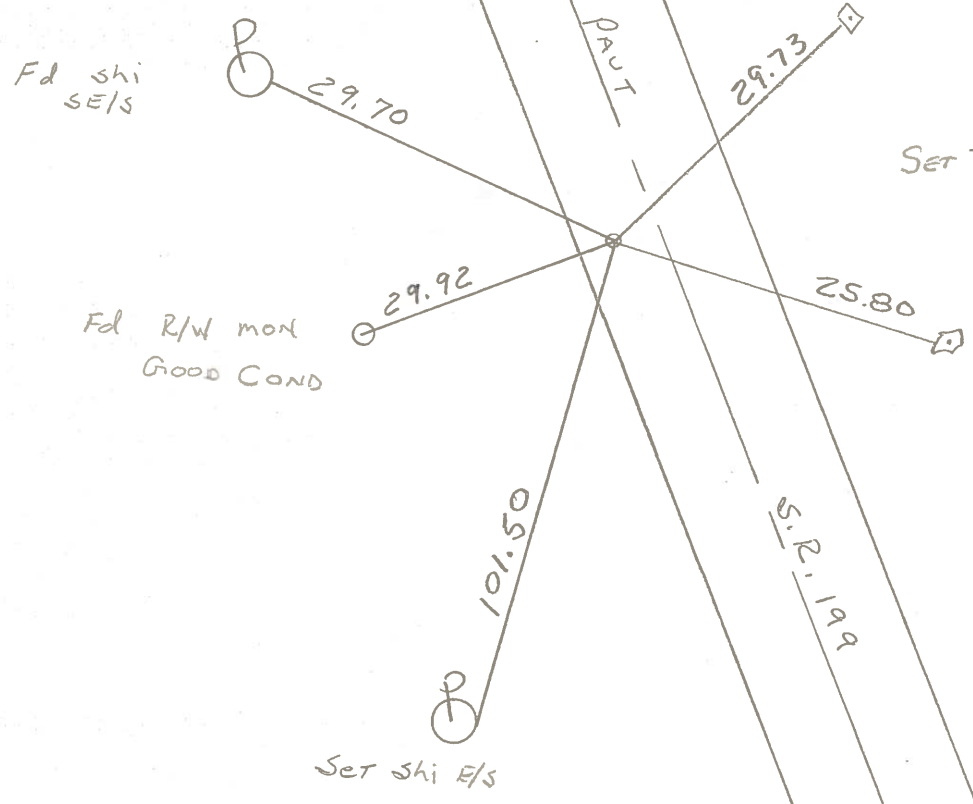
Temp. +28°



Fd SHANK of P.K. @ SURFACE  
 5.0' LT. of Paut  
 4.6' TO W.E.P.  
 14.0' TO E.E.P.

S.L.M. 1158+22

SET P.K./WASHER  
 7-21-83 S.W.H.

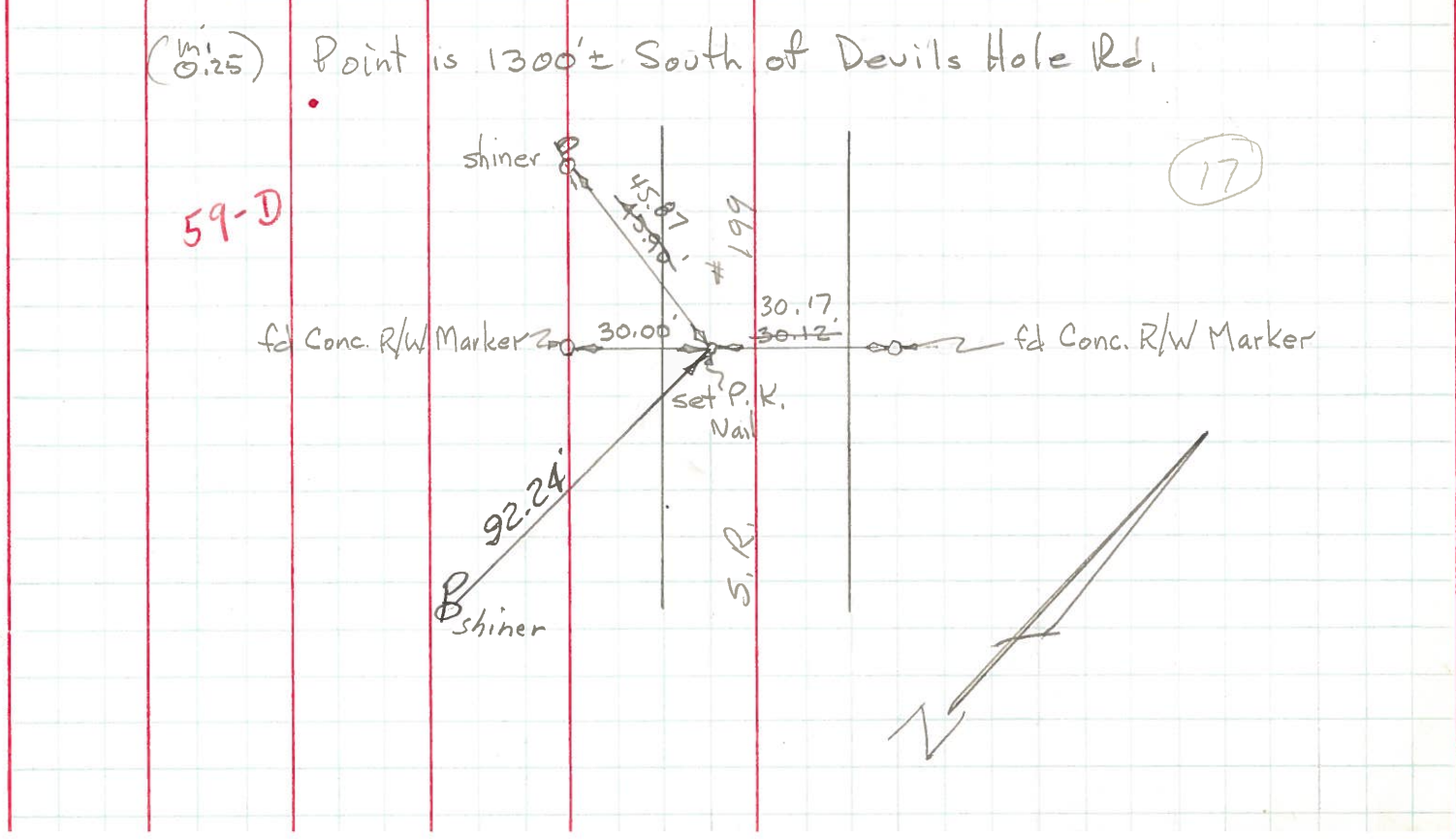
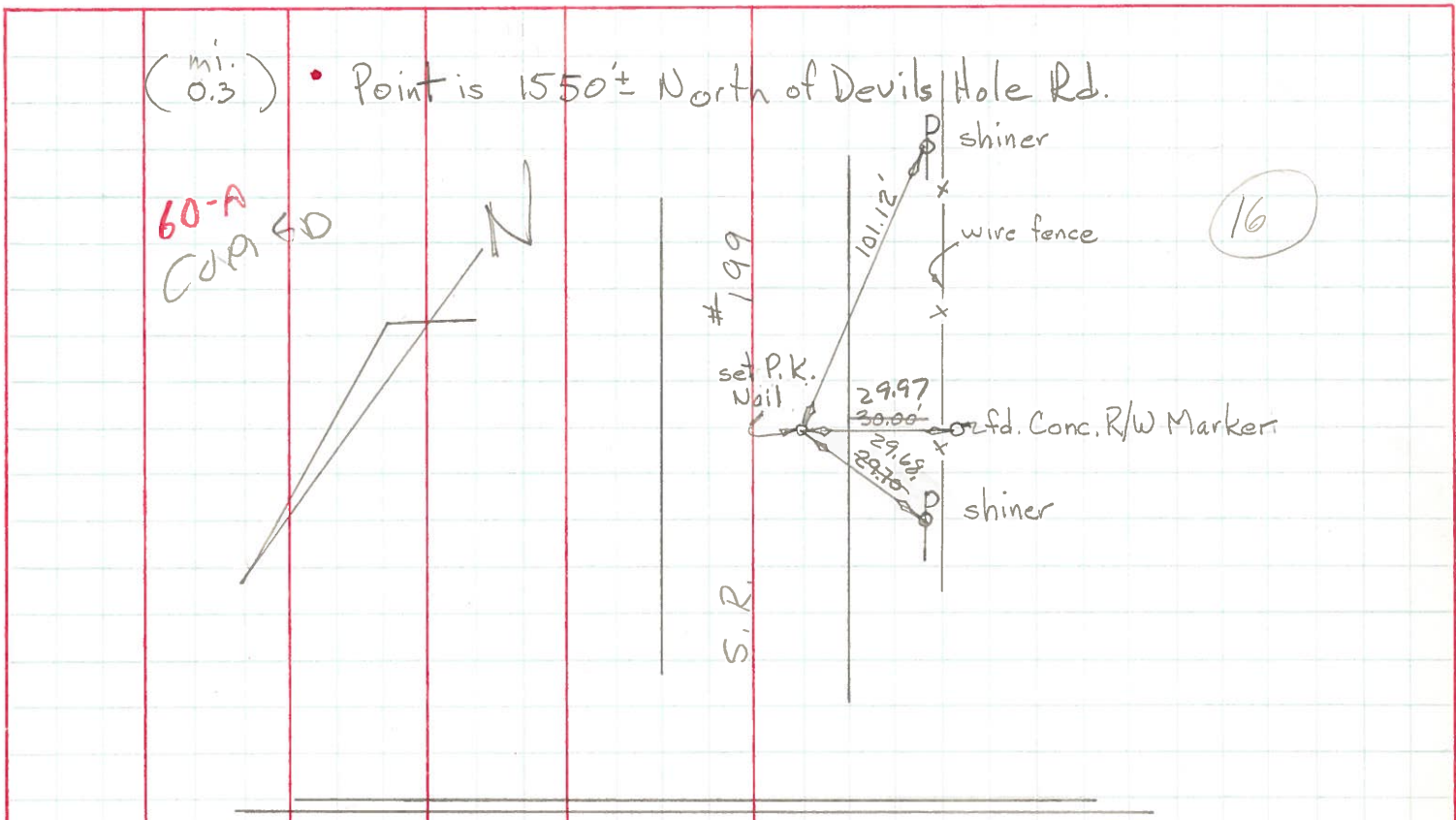


CORRECT

PERSONNEL	TITLE	PERSONNEL	TITLE
Tomsic			
Neuser			
Vanyo			
Granata			

COUNTY WOOD DATE Nov. 4, 1971  
 #199  
 S. R. \_\_\_\_\_ WEATHER \_\_\_\_\_  
 SEC. \_\_\_\_\_ TEMP. \_\_\_\_\_

DESCRIPTION Ref. Mon. LEFT CENTER LINE RIGHT JOB NO. \_\_\_\_\_



O.D.O.T. DISTRICT 2 SURVEY OFFICE

SHEET \_\_\_\_\_ OF \_\_\_\_\_

County WOOD S.R. 199

Date 9-4-71 <sup>CHKD</sup> (8-22-73)

Township WEBSTER

Weather \_\_\_\_\_

Section 26

Temp. \_\_\_\_\_

T N, R E

Personnel TOMSIK

26	25
35	36



NEUSER

VANYO

GRANATA

60-A

POINT IS 1550' ± NORTH OF DEVILS HOLE RD

