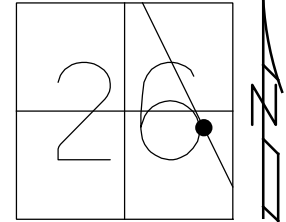


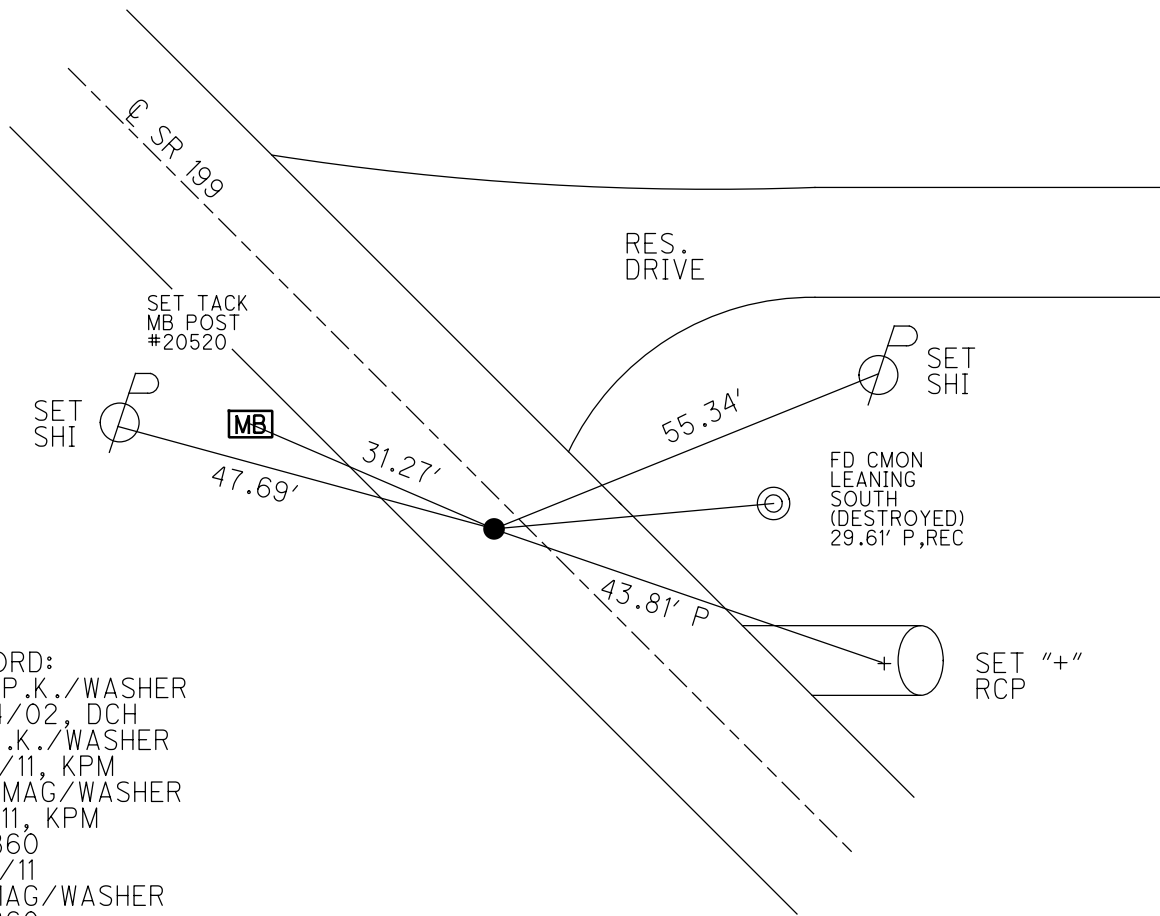
O.D.O.T. DISTRICT 2 SURVEY OFFICE (USE ONLY)

PERSONNEL _____ REFERENCE NO. 60 B SHEET 45 OF 75
 NOTES AUBLE DATE 4-19-18 ROUTE SR 199
 H.C. LEU WEATHER BREEZY COUNTY WOOD
 R.C. AUBLE TEMP. 38° TOWNSHIP WEBSTER
 DWG BY AUBLE PID 101221 SECTION 26
 T 6 N R 11 E

TYPE MONUMENT MAG/WASHER
 ON SURFACE - ~~BELOW~~ ON
 OFFSET ☉ PAVEMENT 4.6' LT : ~~RT~~
5.9' TO LT EDGE PAVEMENT
 STATION: 1173+38



HORZ. DATUM: NAD83 (2011) GEOID: 2012A
 GRID: NORTHING: 651400.474 EASTING: 1679239.499

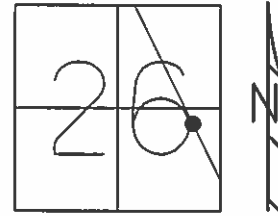


RECORD:
 SET P.K./WASHER
 7/24/02, DCH
 FD P.K./WASHER
 7/21/11, KPM
 SET MAG/WASHER
 9/1/11, KPM
 REFB60
 12/9/11
 FD MAG/WASHER
 REFB60
 4/19/18
 5-24-19, JLL

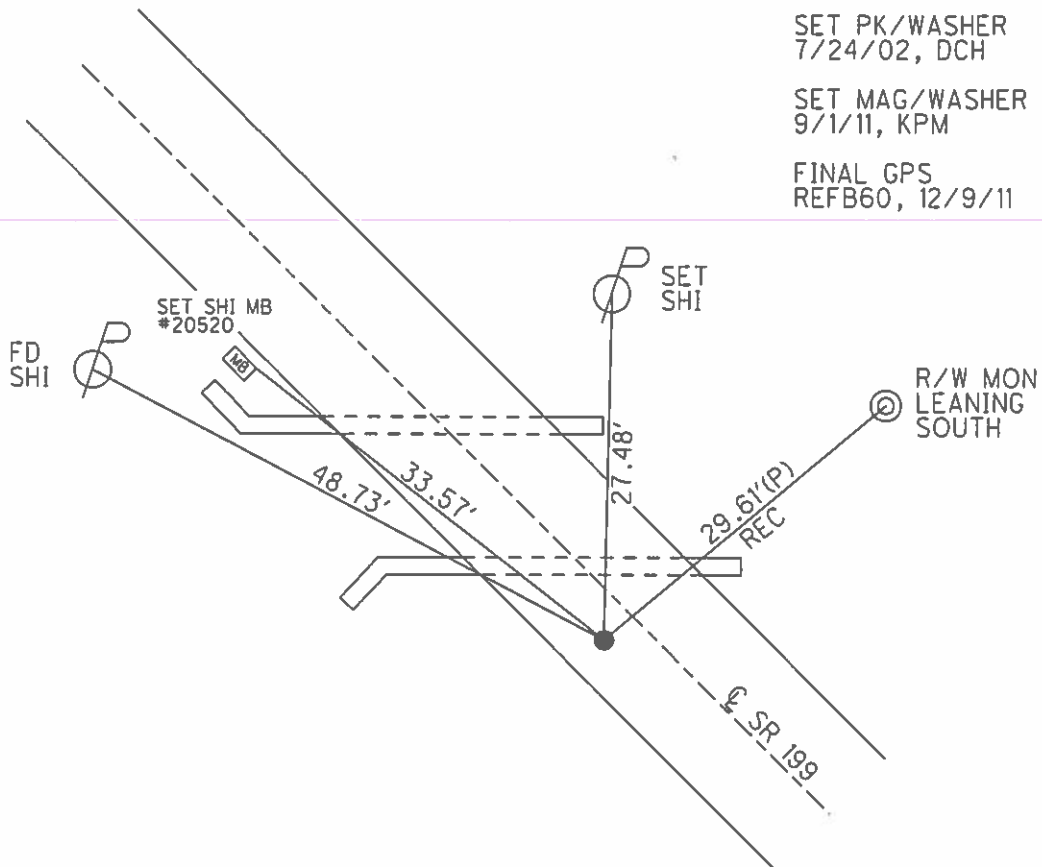
O.D.O.T. DISTRICT 2 SURVEY OFFICE (USE ONLY)

PERSONNEL _____ REFERENCE NO. 60 B SHEET 44 OF 72
 NOTES MOSE DATE 7/21/11 ROUTE SR 199
 H.C. MOSE WEATHER SUNNY COUNTY WOOD
 R.C. HARBAUGH TEMP. 100° TOWNSHIP WEBSTER
 _____ SECTION 26
 _____ T 6 N R 11 E

TYPE MONUMENT _____ PK/WASHER
 ON SURFACE - ~~BELOW~~ _____ ON
 LEFT - ~~C-PAV'T~~ - ~~RIGHT~~ _____ 4.1'
 _____ 5.9' TO LT EDGE PAVEMENT
 S.L.M. _____ 1173+38



GRID: NORTHING: 651400.470 EASTING: 1679239.461



O.D.O.T. DISTRICT 2 SURVEY OFFICE

PERSONNEL

REFERENCE NO. 60B

SHEET 24 OF 45

NOTES ROUSOS

DATE 4-2-02

ROUTE S.R. 199

H.C. HOMAN

WEATHER CLOUDY

COUNTY WOOD

R.C. ROUSOS

TEMP. 60

TOWNSHIP WEBSTER

SECTION 26

T 6 N R 11 E

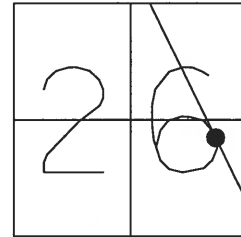
TYPE MONUMENT P.K. & WASHER

ON SURFACE - ~~BELOW~~ YES

LEFT - Q PAV'T - ~~RIGHT~~ 4.5' LT

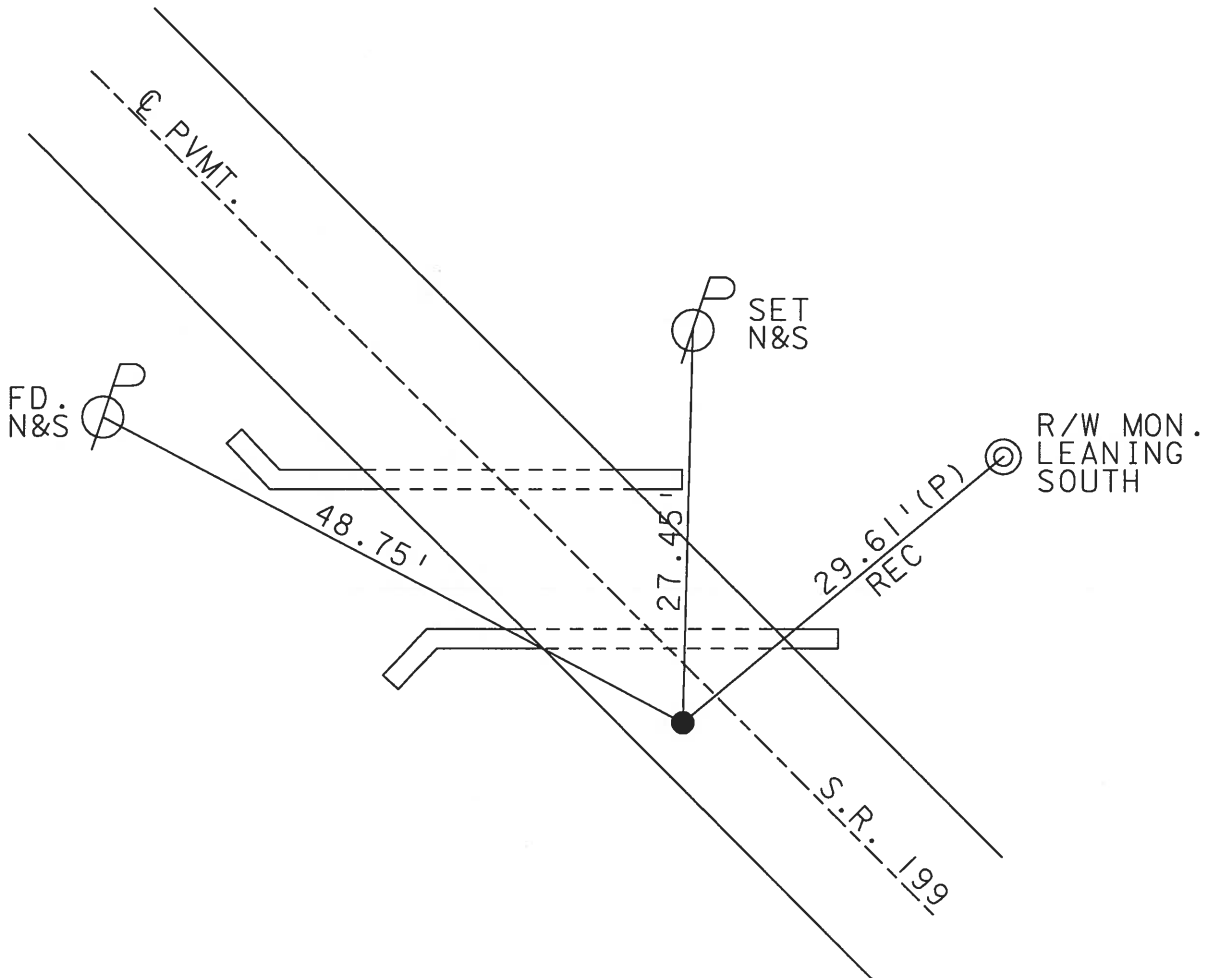
5.5' TO W EDGE PAVEMENT

S.L.M. 1173+38



PREVIOUS MONUMENTS:
PK / WASHER
PK NAIL

SET PK & WASHER
7-24-02 D.C.H.



O.D.O.T. DISTRICT 2 SURVEY OFFICE

PERSONNEL

REFERENCE NO. 60-B

SHEET 24 OF 26

NOTES CHENEY

H.C. BARBOUR

R.C. GEYMAN

DATE 12-13-1991

WEATHER CLOUDY

TEMP. 50°

ROUTE 199

COUNTY WOOD

TOWNSHIP WEBSTER

SECTION 26

T6 N R 11 E

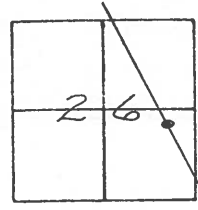
TYPE MONUMENT SET PK/WASHER

ON SURFACE - ~~BELOW~~

LEFT- & PAV'T. - RIGHT 4.5'

5.5' TO W EDGE PAVEMENT

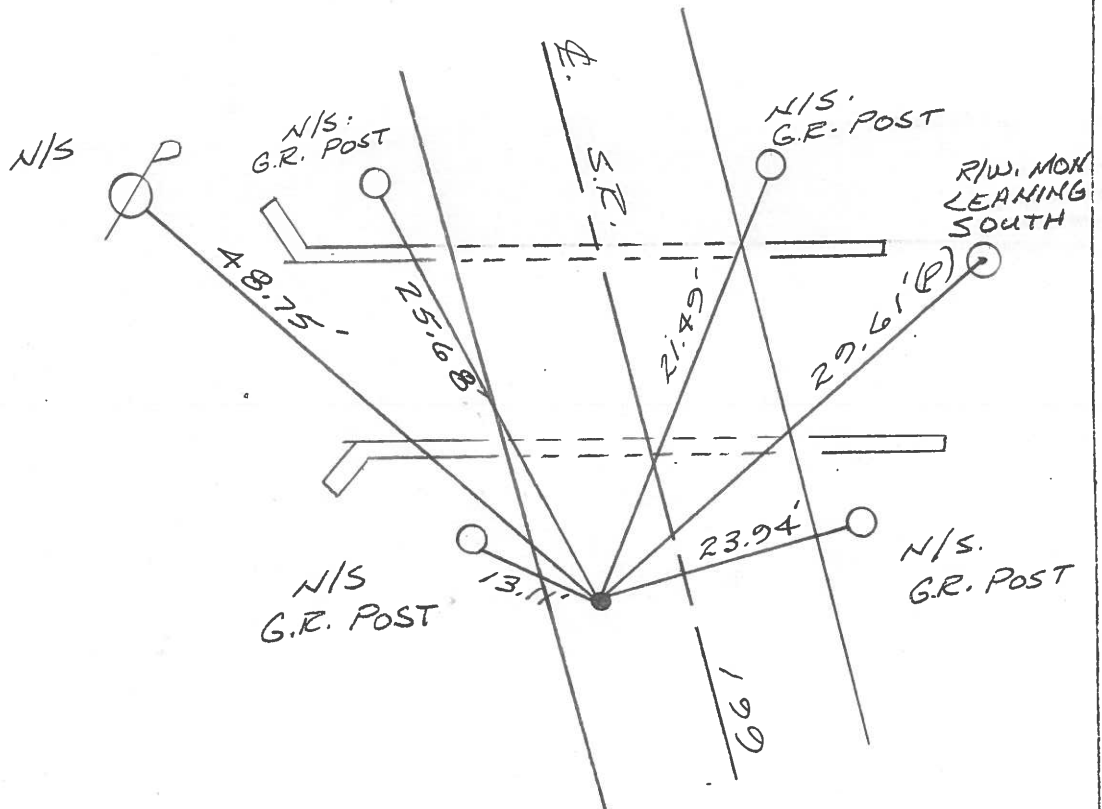
S.L.M. 1171+61



PREVIOUS MONUMENTS:

PK/WASHER

PK. NAIL



Q.D.O.T. DISTRICT 2 SURVEY OFFICE

SHEET _____ OF _____

County WOOD S.R. 199

Date 1-4-83

Township WEBSTER

Weather Cloudy

Section 26

Temp. +30°

T6N, R11E

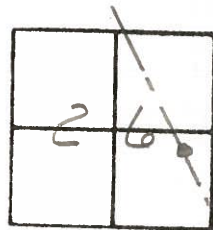
Personnel HOFFMAN

LOEHRKE

#60-B

HOUSEHOLDER

BARNHISEL



Fd P.K. @ surface

4.4' LT. of E PAUT.

4.3' TO W. EP.

13.4' TO E. EP.

S.L.M. 1173 + 19

SET P.K. WASHER
7-21-83 S.W.H.

Fd shi s/s

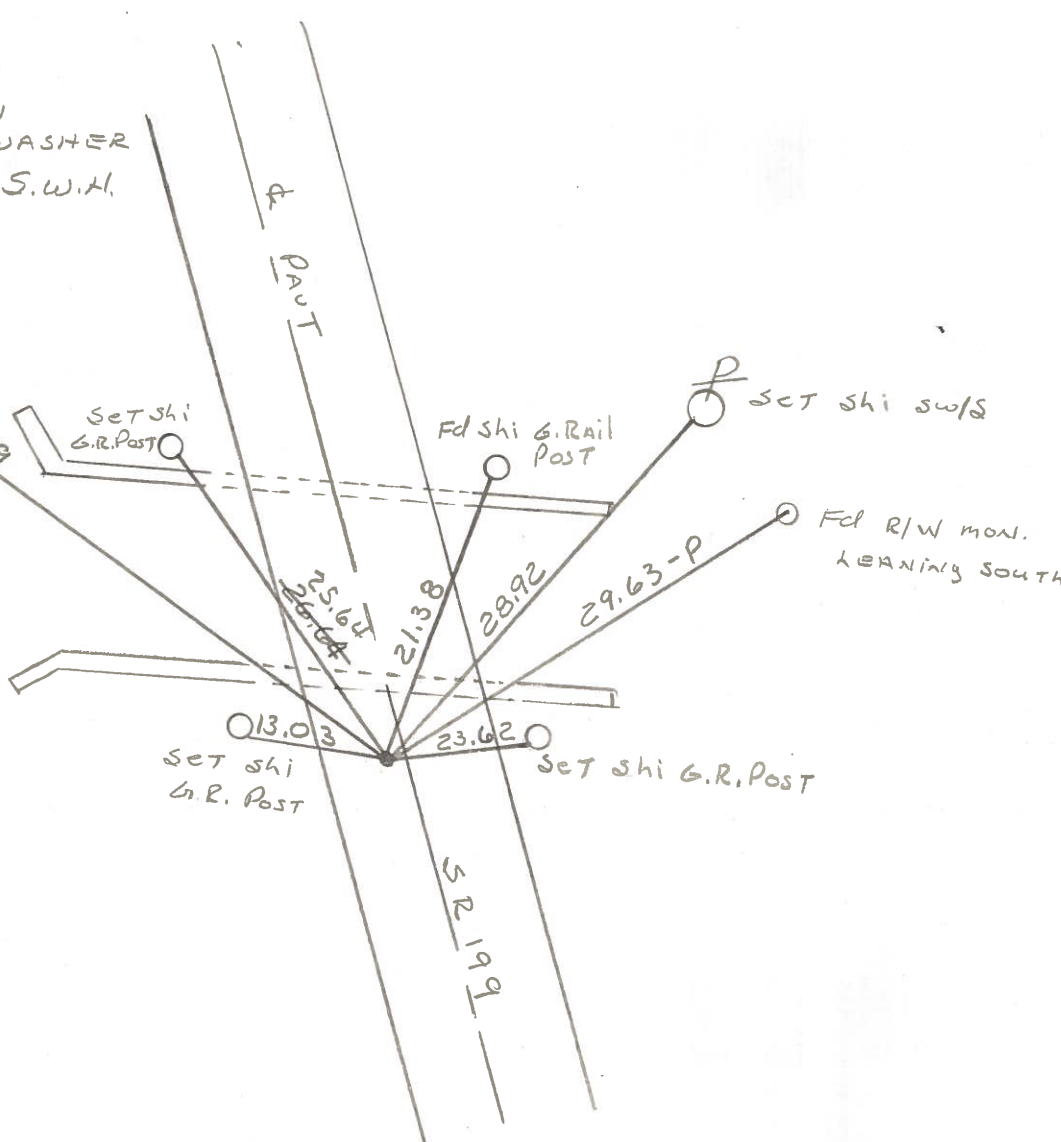


SET shi
G.R. Post

Fd shi G. Rail
Post

SET shi s/s

Fd R/W mon.
LEARNING SOUTH



County WOOD S.R. 199

Township WEBSTER

Section 26

T N, R E

Personnel TOMSIK

NEUSER

VANYO

GRANATA

Date 11-4-71 (CHKD 8-22-73)

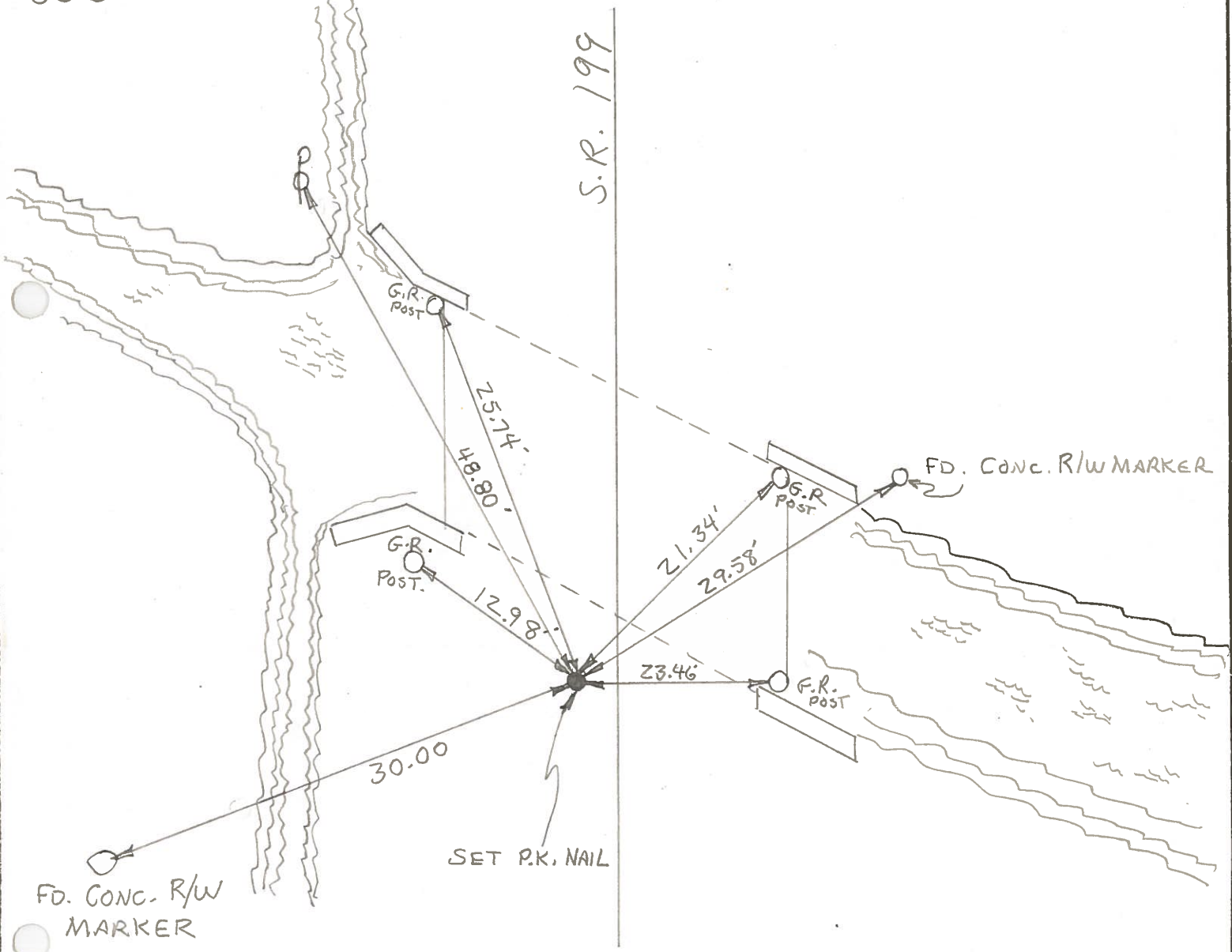
Weather _____

Temp. 40°

26	25
35	36



608 POINT IS 2900'± SOUTH OF S.R. 582 & S.R. #199



PERSONNEL	TITLE	PERSONNEL	TITLE	COUNTY	DATE
Tomsic				Wood	Nov. 4, 1971
Neuser				# 199	ckd - 8-22-73
Vanyo					WEATHER
Granata				SEC.	TEMP. 40's

DESCRIPTION Ref. Mow. LEFT CENTER LINE RIGHT JOB NO. _____

