

O.D.O.T. DISTRICT 2 SURVEY OFFICE (USE ONLY)

PERSONNEL

REFERENCE NO. 60 C

SHEET 46 OF 75

NOTES AUBLE  
 H.C. LEU  
 R.C. AUBLE

DATE 4-19-18  
 WEATHER BREEZY  
 TEMP. 38°

ROUTE SR 199  
 COUNTY WOOD  
 TOWNSHIP WEBSTER  
 SECTION 26  
 T 6 N R 11 E

DWG BY AUBLE PID 101221

TYPE MONUMENT MAG NAIL

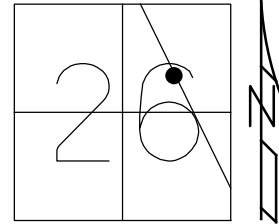
ON SURFACE - ~~BELOW~~ ON

OFFSET 2.5' LT : ~~RT~~  
8.1' TO W EDGE PAVEMENT

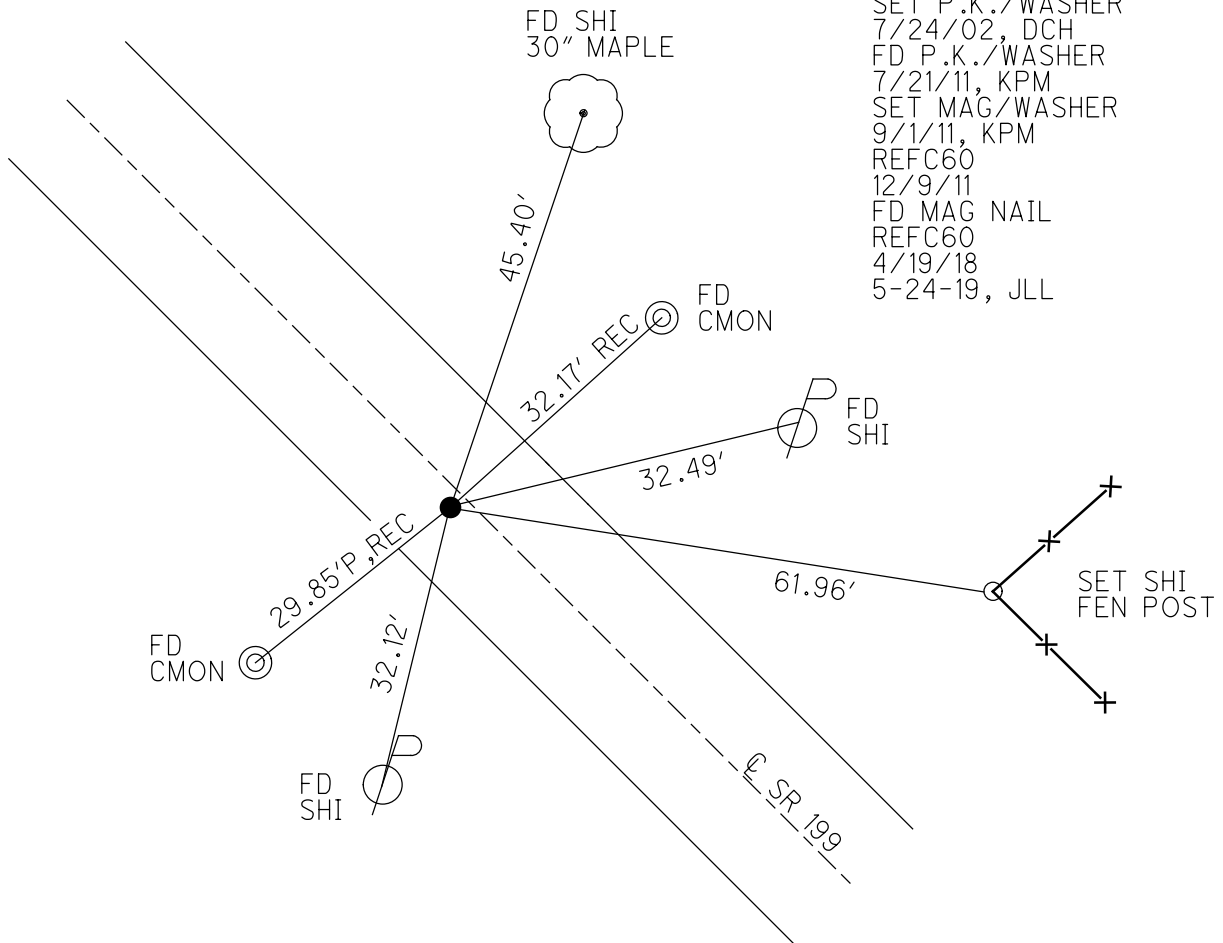
STATION: 1184+20

HORIZ.DATUM: NAD83 (2011) GEOID: 2012A

GRID: NORTHING: 652370.518 EASTING: 1678759.887



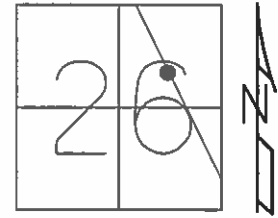
RECORD:  
 PREVIOUS MONUMENTS:  
 P.K./WASHER  
 P.K.NAIL  
 SET P.K./WASHER  
 7/24/02, DCH  
 FD P.K./WASHER  
 7/21/11, KPM  
 SET MAG/WASHER  
 9/1/11, KPM  
 REFC60  
 12/9/11  
 FD MAG NAIL  
 REFC60  
 4/19/18  
 5-24-19, JLL



O.D.O.T. DISTRICT 2 SURVEY OFFICE (USE ONLY)

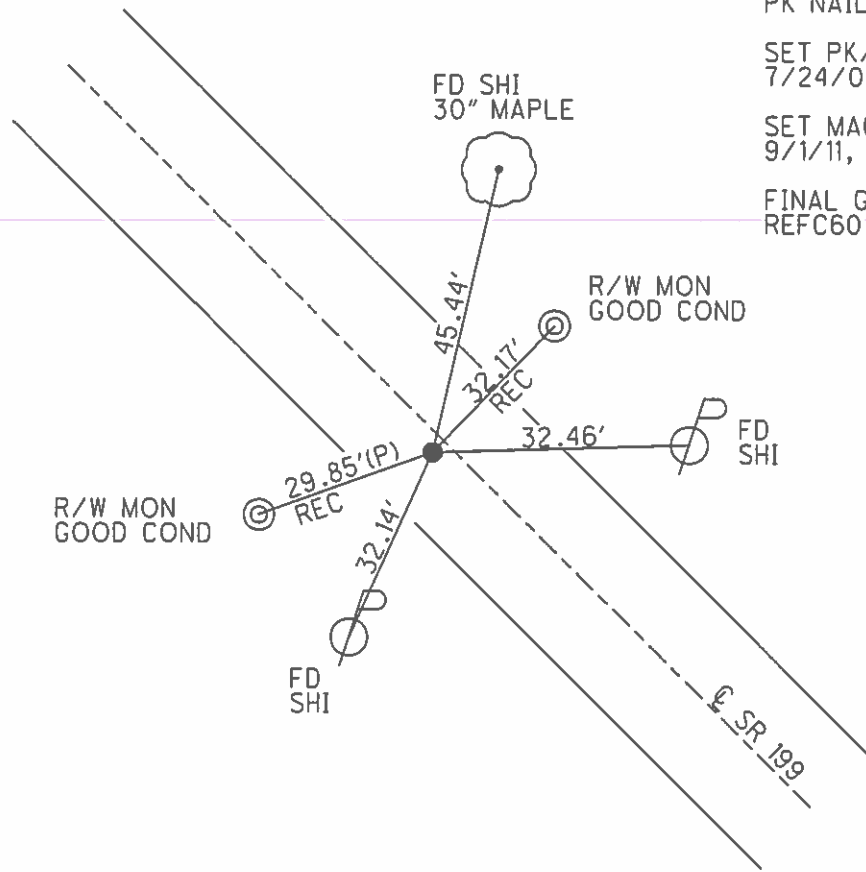
PERSONNEL \_\_\_\_\_ REFERENCE NO. 60 C SHEET 45 OF 72  
 NOTES MOSER DATE 7/21/11 ROUTE SR 199  
 H.C. MOSER WEATHER SUNNY COUNTY WOOD  
 R.C. HARBAUGH TEMP. 100° TOWNSHIP WEBSTER  
 \_\_\_\_\_ SECTION 26  
 \_\_\_\_\_ T 6 N R 11 E

TYPE MONUMENT \_\_\_\_\_ PK/WASHER \_\_\_\_\_  
 ON SURFACE - ~~BELOW~~ \_\_\_\_\_ ON \_\_\_\_\_  
 LEFT - ~~C PAV'T~~ - ~~RIGHT~~ \_\_\_\_\_ 1.6' \_\_\_\_\_  
8.1' TO W EDGE PAVEMENT  
 S.L.M. \_\_\_\_\_ 1184+20



GRID: NORTHING: 652370.535 EASTING: 1678759.856

PREVIOUS MONUMENTS:  
 PK/WASHER  
 PK NAIL  
 SET PK/WASHER  
 7/24/02, DCH  
 SET MAG/WASHER  
 9/1/11, KPM  
 FINAL GPS  
 REFC60, 12/9/11



R/W MON  
GOOD COND

R/W MON  
GOOD COND

SR 199

O.D.O.T. DISTRICT 2 SURVEY OFFICE

PERSONNEL

REFERENCE NO. 60C

SHEET 25 OF 45

NOTES ROUSOS

DATE 4-2-02

ROUTE S.R. 199

H.C. HOMAN

WEATHER CLOUDY

COUNTY WOOD

R.C. ROUSOS

TEMP. 60

TOWNSHIP WEBSTER

SECTION 26

T 6 N R 11 E

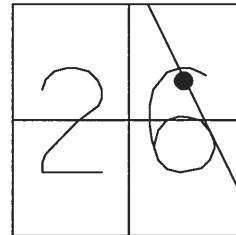
TYPE MONUMENT P.K. & WASHER

ON SURFACE - ~~BELOW~~ YES

LEFT - Q PAV'T - RIGHT 2' LT.

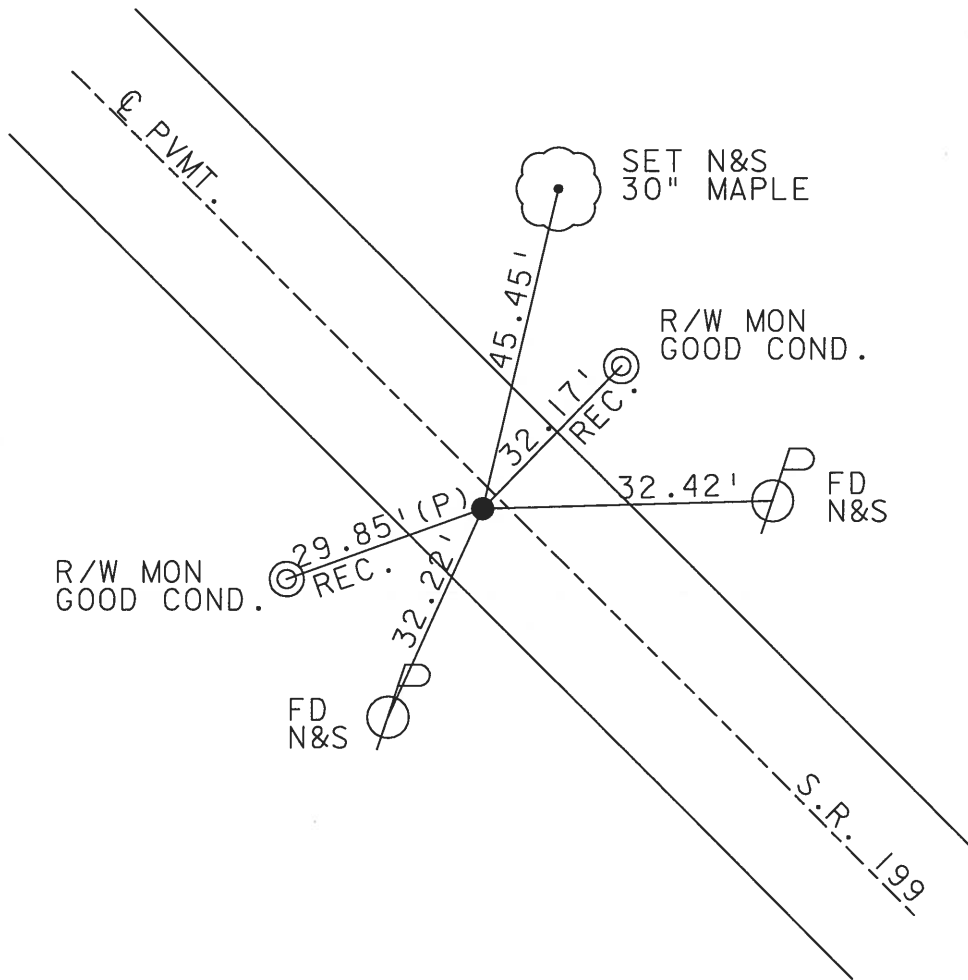
8' TO W EDGE PAVEMENT

S.L.M. 1184+20



PREVIOUS MONUMENTS:  
PK / WASHER  
PK NAIL

SET PK & WASHER  
8-08-02 D.C.H.



O.D.O.T. DISTRICT 2 SURVEY OFFICE

PERSONNEL

REFERENCE NO. 60-C SHEET 25 OF 26

NOTES CHENEY

H.C. BARBOUR

DATE 12-13-1991

ROUTE 199

R.C. GEYMAN

WEATHER CLOUDY

COUNTY WOOD

TEMP. 50°

TOWNSHIP WEBSTER

SECTION 26

T6N R11E

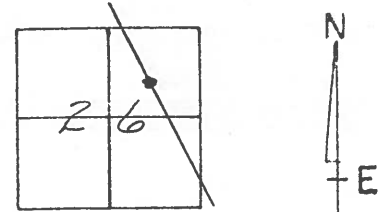
TYPE MONUMENT SET PK/WASHER

ON SURFACE - BELOW

LEFT- & PAV'T. - RIGHT 2'

8' TO W EDGE PAVEMENT

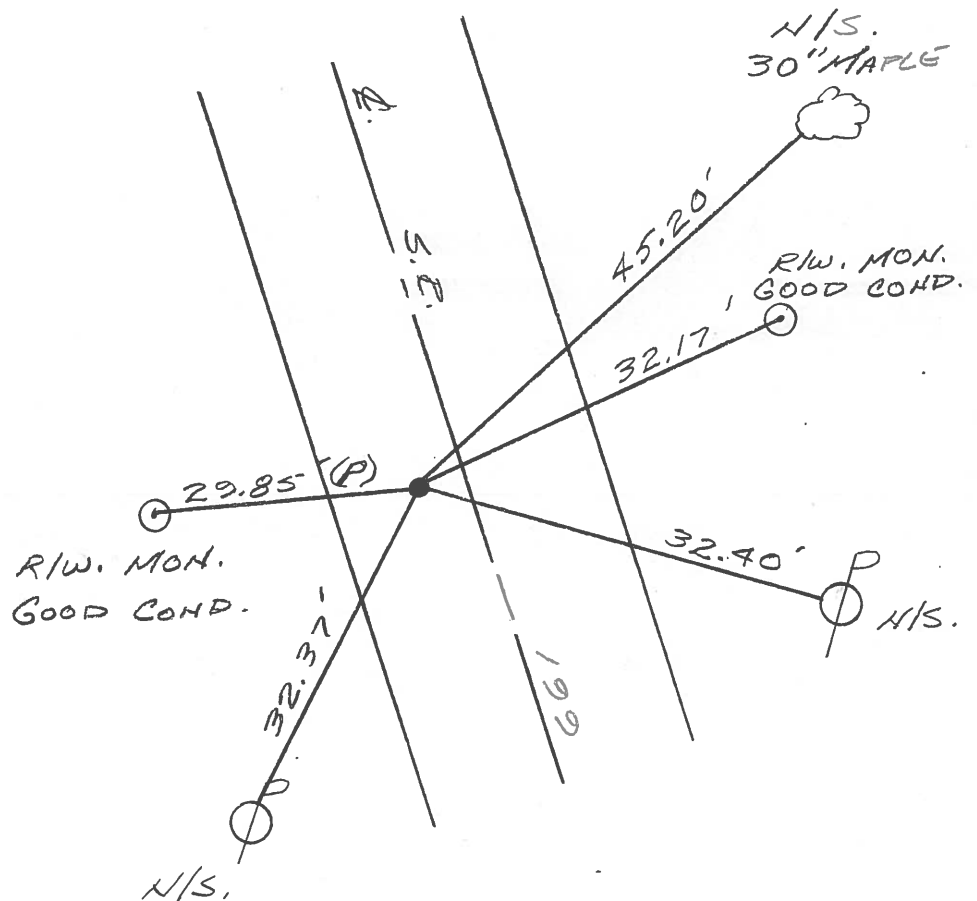
S.L.M. 1182+43



PREVIOUS MONUMENTS:

PK/WASHER

P.K. NAIL



QD.O.T. DISTRICT 2 SURVEY OFFICE

SHEET \_\_\_\_\_ OF \_\_\_\_\_

County WOOD S.R. 199

Township WEBSTER

Section 26

T6N, R11E

Personnel HOFFMAN

LOENRKE

HOUSEHOLDER

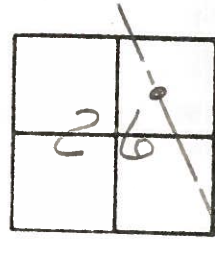
BARNHISEL

#60-C

Date 1-4-83

Weather Cloudy

Temp. +30°

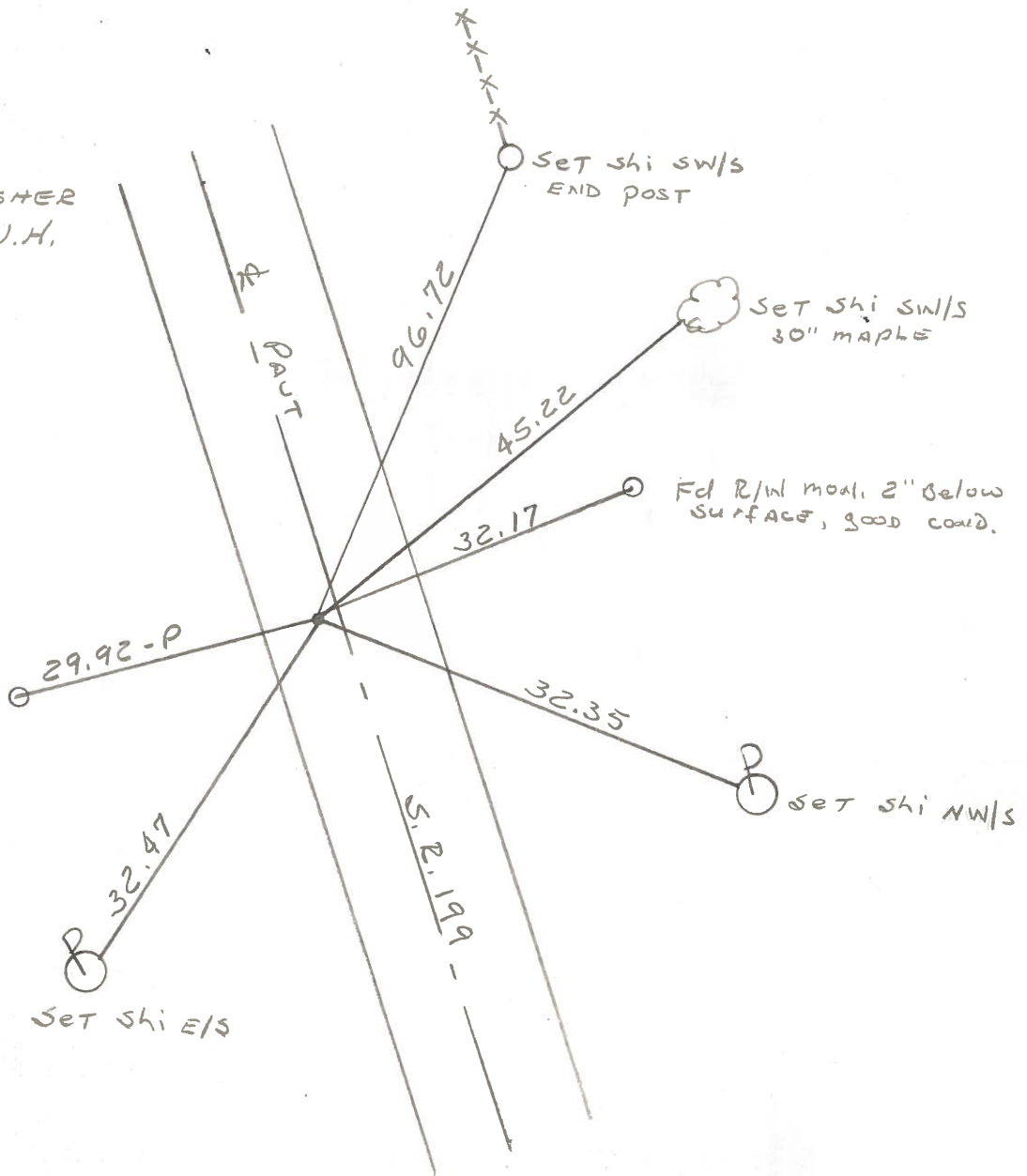


Fd P.K. @ surface  
 2.0' LT. of & PAUT  
 6.6' TO W.E.P.  
 11.2' TO E.E.P.

S.L.M. 1184+02

SET P.K. / WASHER  
 7-21-83 S.W.H.

FD. R/W MON.  
 GOOD COND



ODOT. DISTRICT 2 SURVEY OFFICE

SHEET \_\_\_\_\_ OF \_\_\_\_\_

County WOOD S.R. 199

Date 11-12-71

Township WEBSTER

Weather \_\_\_\_\_

Section 26

Temp. \_\_\_\_\_

T N, R E

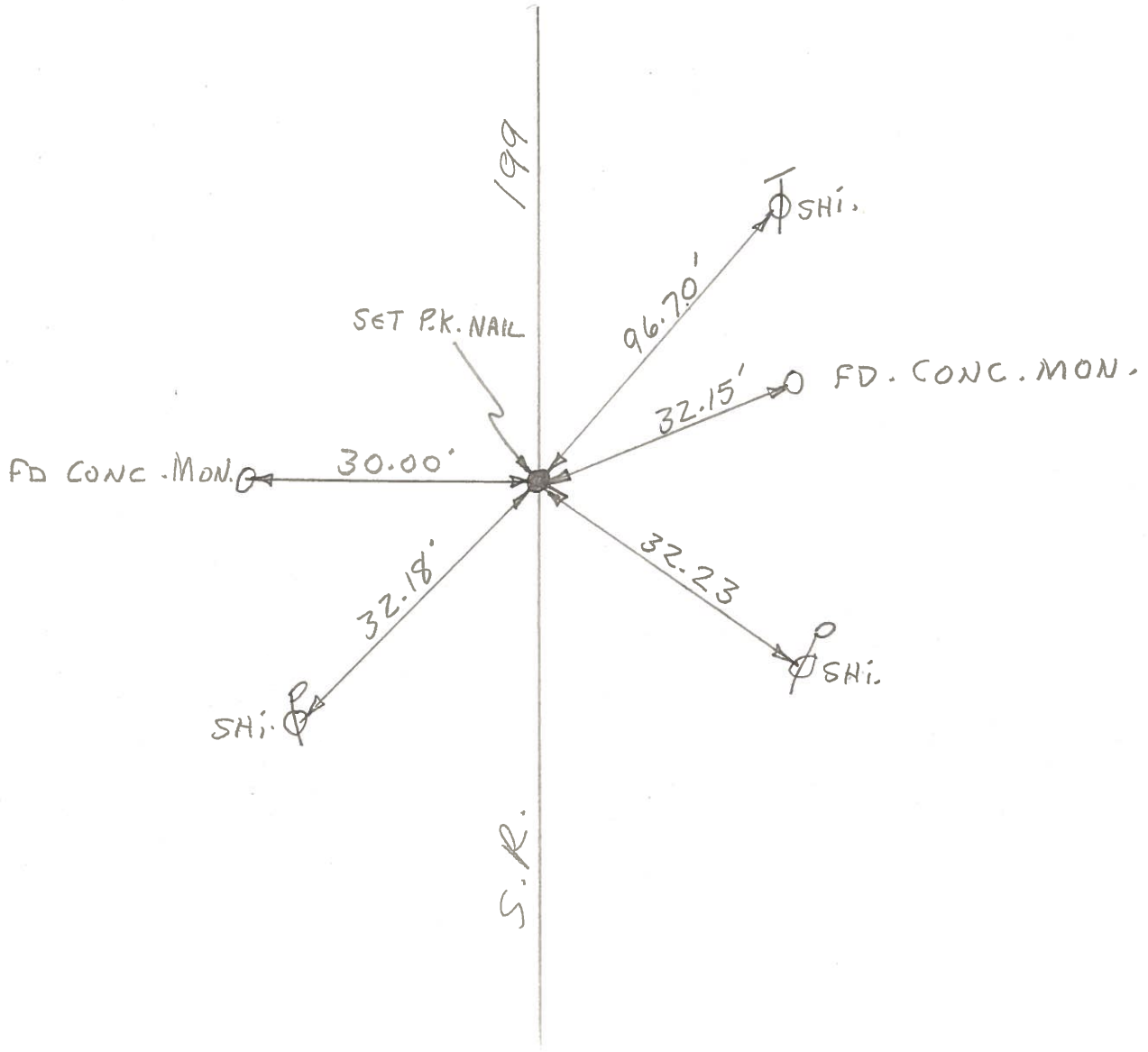
Personnel TOMSIK

26	25
35	36



NEUSER  
VANYO  
GRANATA

60-C POINT IS 1800'± SOUTH OF S.R. 582 & S.R. 199



COPIED

SHEET NO. \_\_\_\_\_

PERSONNEL	TITLE	PERSONNEL	TITLE
Tamsic			
Neuser			
Vanyo			
Granata			

COUNTY WOOD DATE NOV 12-71

S. R. 199 WEATHER CKD 8-22-73

SEC. \_\_\_\_\_ TEMP. \_\_\_\_\_

DESCRIPTION \_\_\_\_\_ LEFT \_\_\_\_\_ CENTER LINE \_\_\_\_\_ RIGHT \_\_\_\_\_ JOB NO. \_\_\_\_\_

60-C

Point is 1800± South of S.R. 582 & S.R. 199

