

O.D.O.T. DISTRICT 2 SURVEY OFFICE (USE ONLY)

PERSONNEL

REFERENCE NO. 61

SHEET 47 OF 75

NOTES AUBLE

DATE 4-19-18

ROUTE SR 199

H.C. LEU

WEATHER BREEZY

COUNTY WOOD

R.C. AUBLE

TEMP. 45°

TOWNSHIP WEBSTER

DWG BY AUBLE

PID 101221

SECTION 26

T 6 N R 11 E

TYPE MONUMENT MAG/WASHER

ON SURFACE - ~~BELOW~~ ON

OFFSET ☉ PAVEMENT 2.4' ~~±~~ : RT

- TO - EDGE PAVEMENT

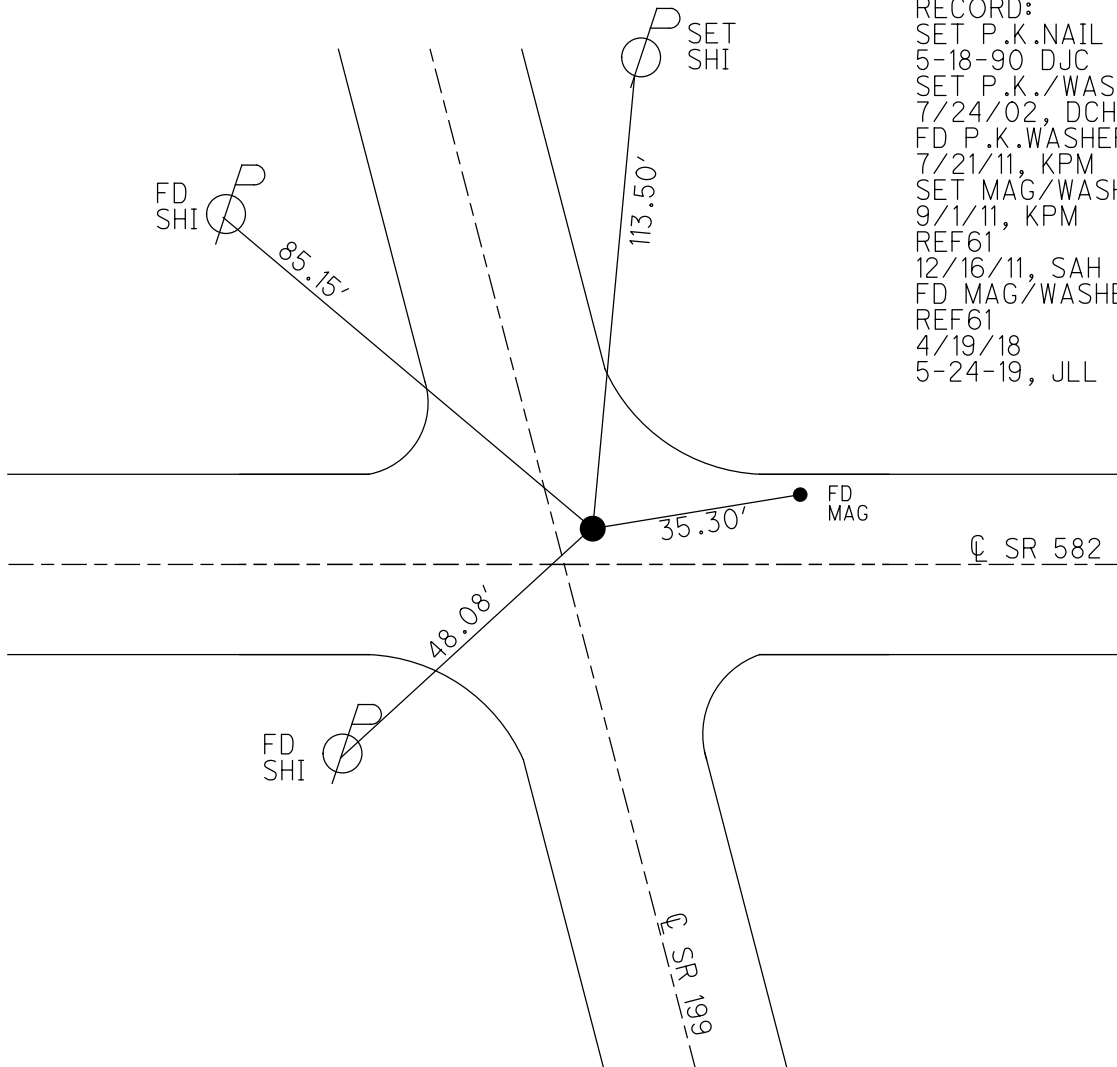
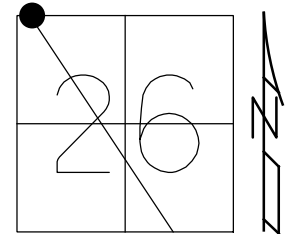
STATION: 1203+47

HORIZ.DATUM: NAD83 (2011)

GEOID: 2012A

GRID: NORTHING: 654105.580

EASTING: 1677922.967

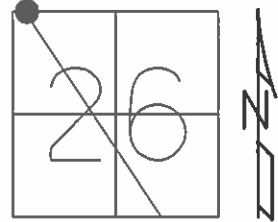


RECORD:
 SET P.K.NAIL
 5-18-90 DJC
 SET P.K./WASHER
 7/24/02, DCH
 FD P.K.WASHER
 7/21/11, KPM
 SET MAG/WASHER
 9/1/11, KPM
 REF61
 12/16/11, SAH
 FD MAG/WASHER
 REF61
 4/19/18
 5-24-19, JLL

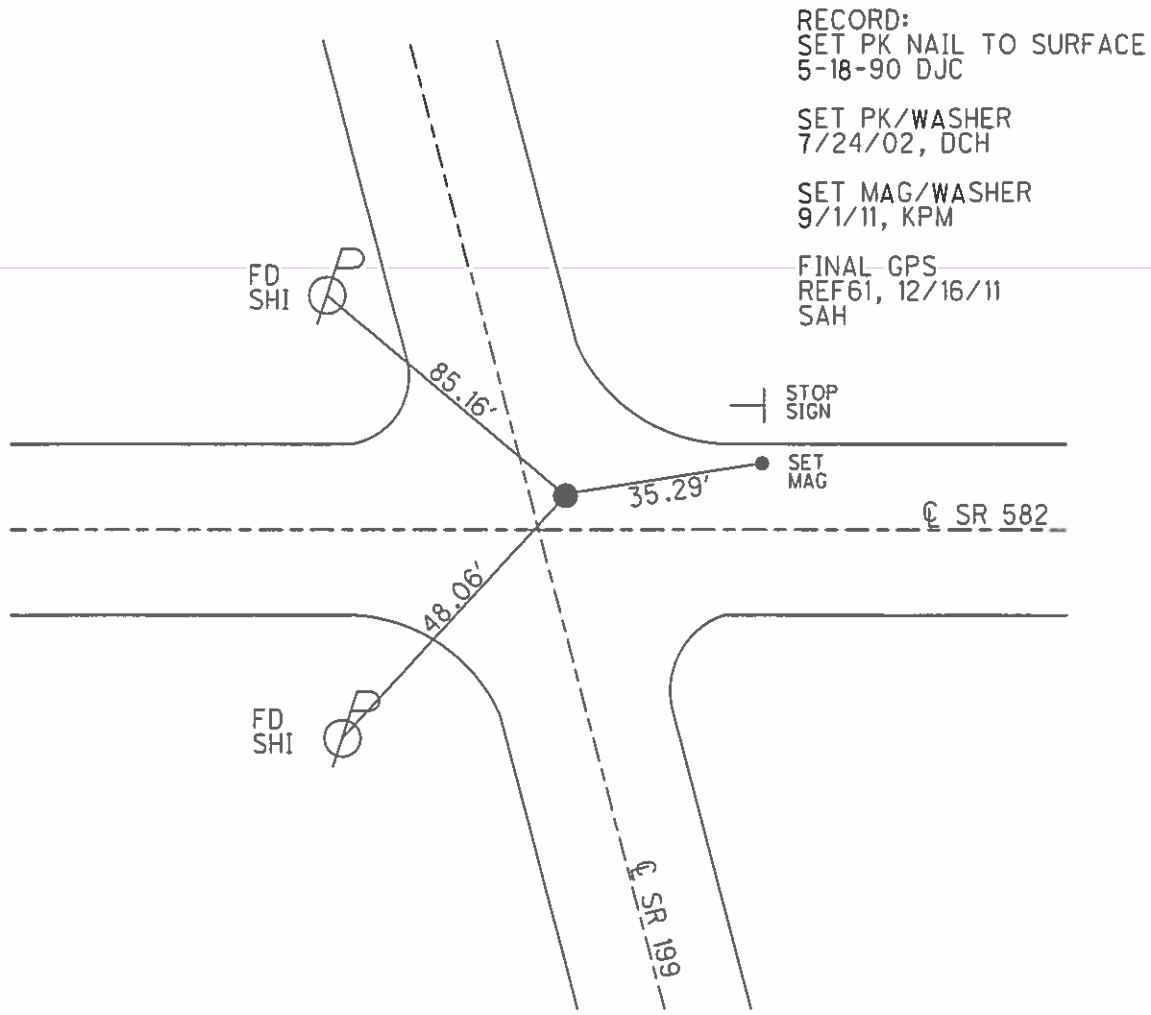
O.D.O.T. DISTRICT 2 SURVEY OFFICE (USE ONLY)

PERSONNEL _____ REFERENCE NO. 61 SHEET 46 OF 72
 NOTES MOSER DATE 7/21/11 ROUTE SR 199
 H.C. MOSER WEATHER SUNNY COUNTY WOOD
 R.C. HARBAUGH TEMP. 100° TOWNSHIP WEBSTER
 _____ SECTION 26
 _____ T 6 N R 11 E

TYPE MONUMENT _____ PK/WASHER _____
 ON SURFACE - ~~BELOW~~ _____ ON _____
~~LEFT - C PAVT~~ - RIGHT 2.4'
 _____ TO _____ EDGE PAVEMENT
 S.L.M. _____ 1203+47



GRID: NORTHING: 654105.587 EASTING: 1677922.909



RECORD:
 SET PK NAIL TO SURFACE
 5-18-90 DJC

 SET PK/WASHER
 7/24/02, DCH

 SET MAG/WASHER
 9/1/11, KPM

 FINAL GPS
 REF61, 12/16/11
 SAH

O.D.O.T. DISTRICT 2 SURVEY OFFICE

PERSONNEL

REFERENCE NO. 61

SHEET 26 OF 45

NOTES ROUSOS

DATE 4-2-02

ROUTE 199

H.C. HOMAN

WEATHER CLOUDY

COUNTY WOOD

R.C. ROUSOS

TEMP. 60

TOWNSHIP WEBSTER

SECTION 26

T 6 N R 11 E

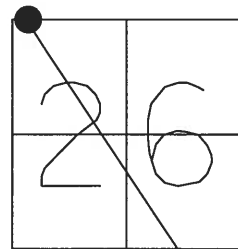
TYPE MONUMENT PK & WASHER

ON SURFACE - ~~BELOW~~ YES

~~LEFT~~ - Q PAV'T - RIGHT 3' RT.

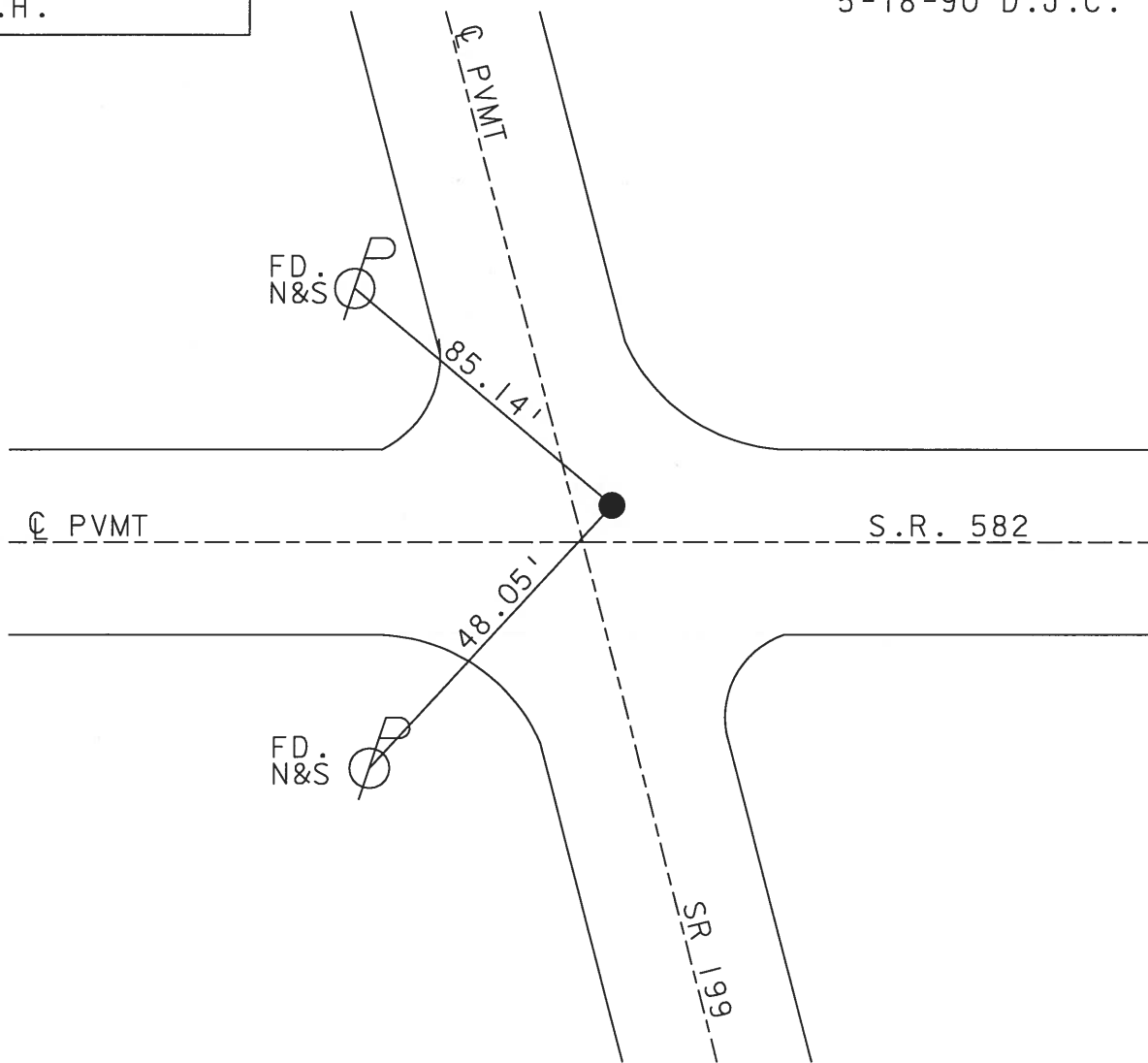
TO EDGE PAVEMENT

S.L.M. 1203+47



SET PK & WASHER
7-24-02
D.C.H.

RECORD:
SET PK NAIL TO SURFACE
5-18-90 D.J.C.



O.D.O.T. DISTRICT 2 SURVEY OFFICE

PERSONNEL

REFERENCE NO. 61

SHEET 26 OF 26

NOTES CHENEY

H.C. BARBOUR

DATE 12-13-1991

ROUTE 199

R.C. GEYMAN

WEATHER CLOUDY

COUNTY WOOD

TEMP. 50°

TOWNSHIP WEBSTER

SECTION 26

T6N R11E

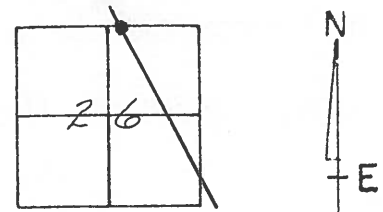
TYPE MONUMENT SET PK/WASHER

ON SURFACE - ~~BELOW~~

~~LEFT~~ - & PAV'T. - RIGHT 3'

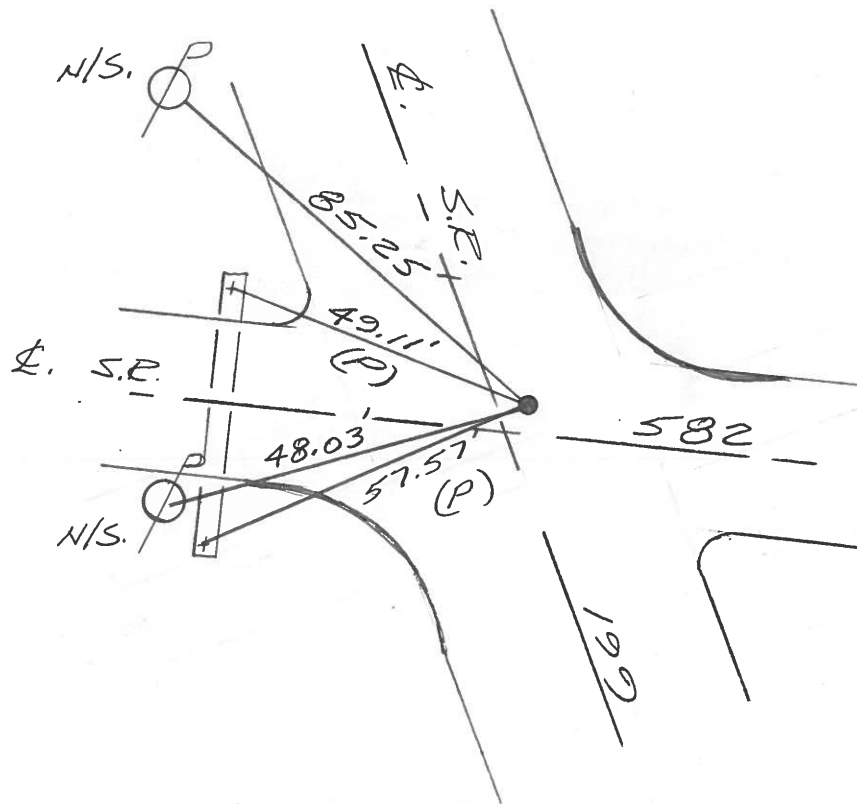
TO EDGE PAVEMENT

S.L.M. 1201470



PREVIOUS MONUMENT:

P.K. NAIL



O.D.O.T. DISTRICT 2 SURVEY OFFICE

PERSONNEL

REFERENCE NO. 61

SHEET 1 OF 21

NOTES 1. Stone

H.C. D. Curtis

DATE 6 Sept. 88

ROUTE SR #199

R.C. J. Hauscholder

WEATHER Fair

COUNTY Wood

TEMP. 67°

TOWNSHIP Webster

SECTION 26

T R

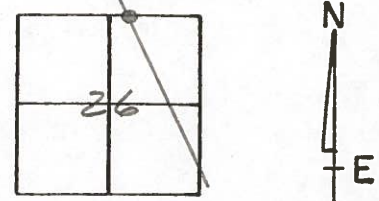
TYPE MONUMENT PK Nail

ON SURFACE - BELOW Surface

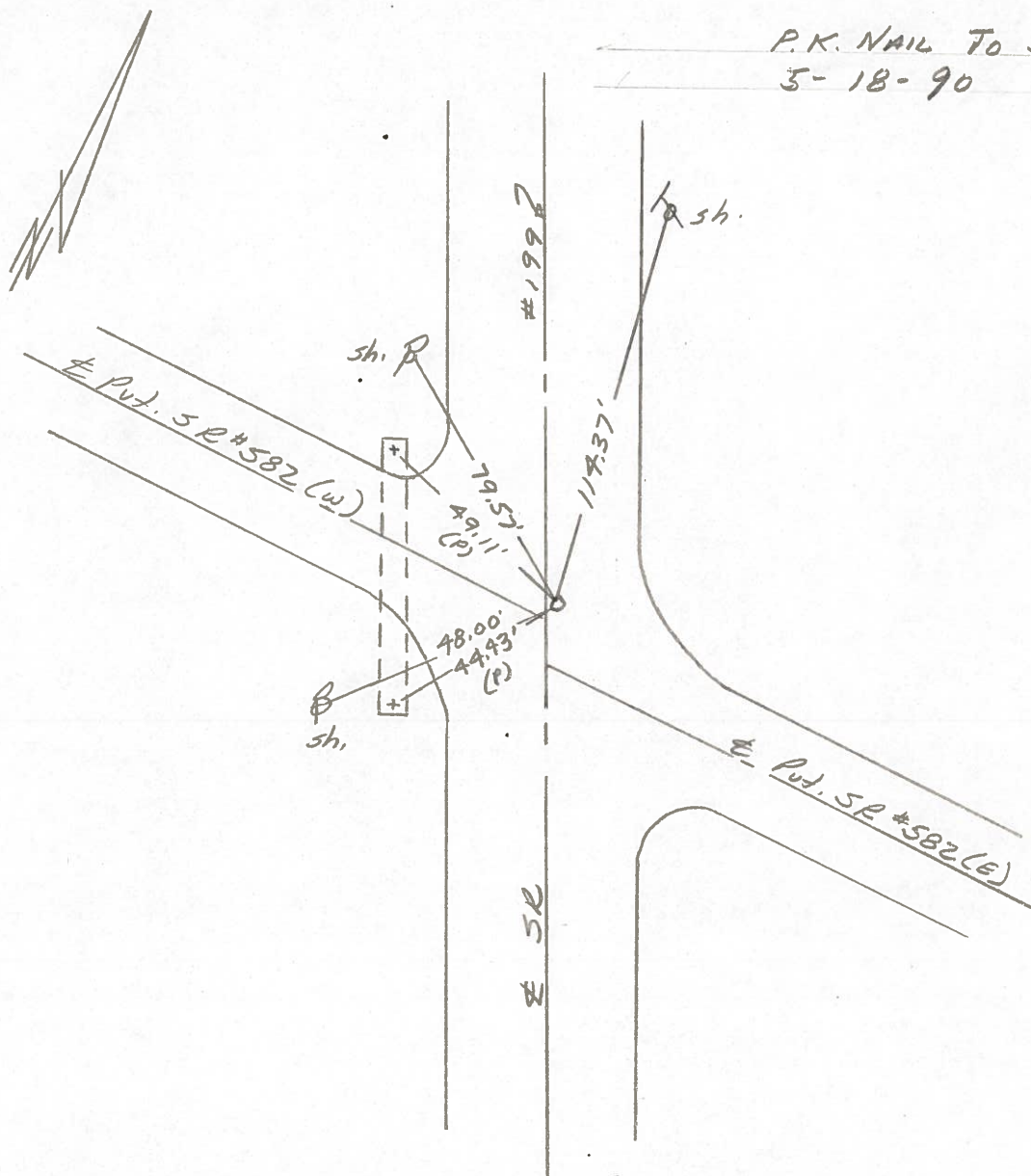
LEFT - & PAV'T. - RIGHT

 TO EDGE PAVEMENT

S.L.M. 1203 + 31.20



P.K. NAIL TO SURFACE
5-18-90 *J.P.C.*



Q.D.O.T. DISTRICT 2 SURVEY OFFICE

SHEET _____ OF _____

County WOOD S.R. 199

Township WEBSTER

Section 26-23

T6N, R11E

Personnel HOFFMAN

LOEHRKE

HOUSEHOLDER

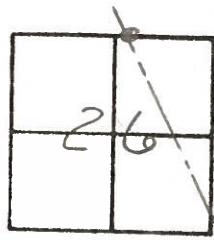
BARNHISEL

#61

Date JAN 5 1983

Weather CLOUDY

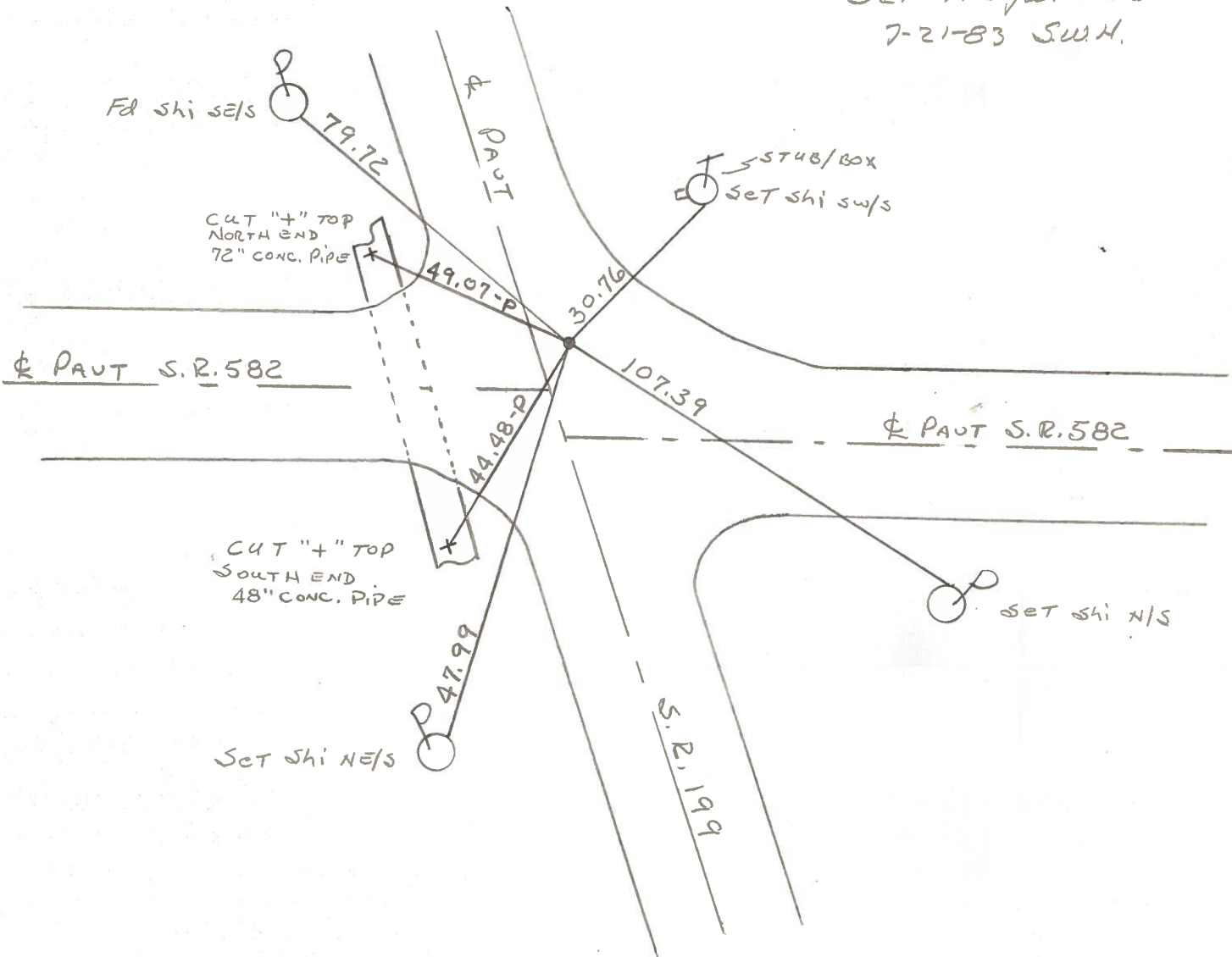
Temp. +32°



Fd P.K. @ SURFACE
3.1' RT of & PAUT SR199
19.5' NORTH of & PAUT 582 EAST

S.L.M. 1203+28

SET P.K. / WASHER
7-21-83 SWH.



County WOOD S.R. 199

Township WEBSTER

Section 23

T N, R E

Personnel TOM SIG

NEUSER

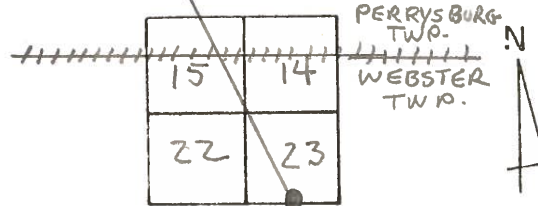
VANYO

GRANATA

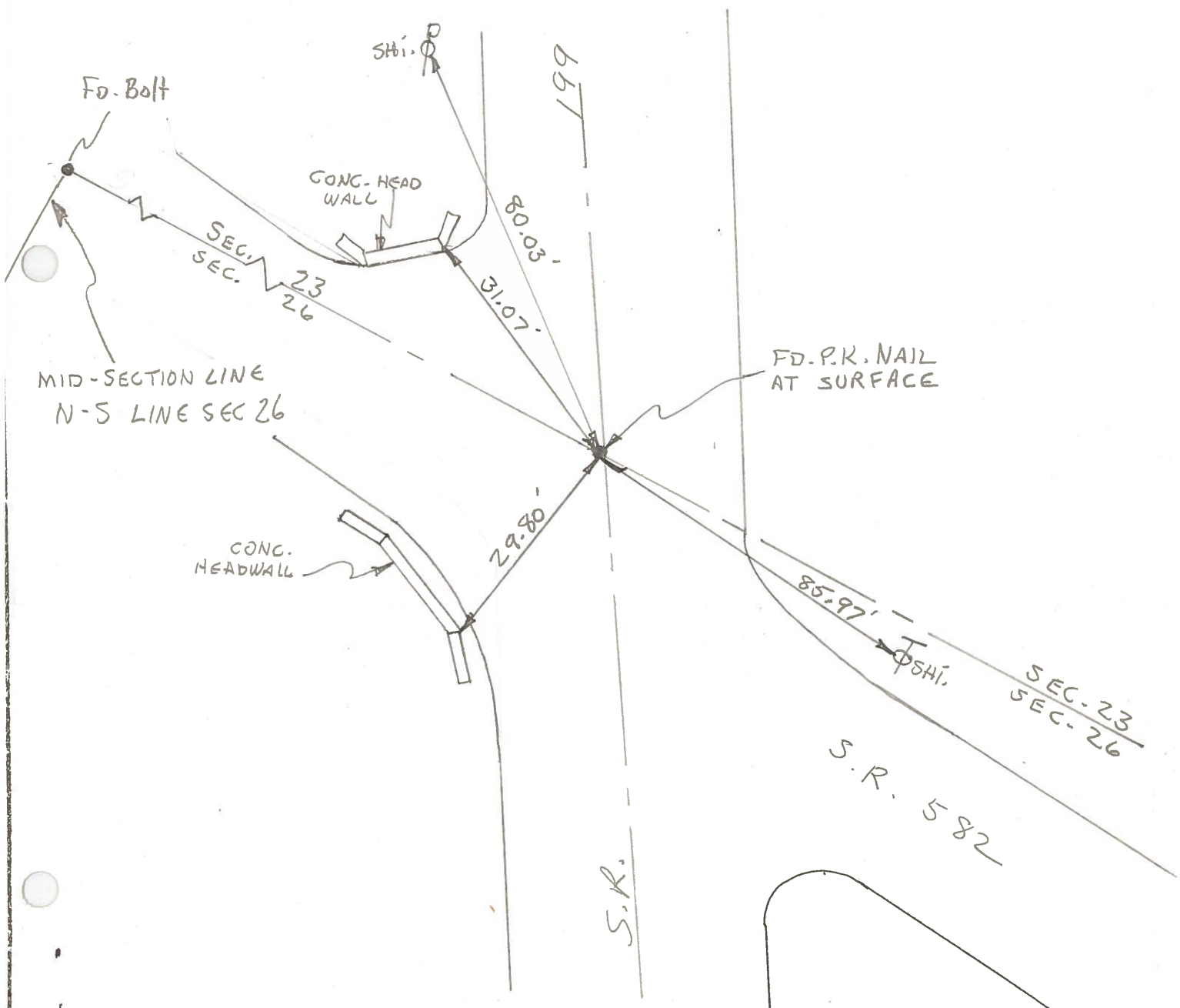
Date 2-16-72 ^{CHKD} (8-22-73)

Weather _____

Temp. _____



61



PERSONNEL	TITLE	PERSONNEL	TITLE
Tomsic			
Neuser			
Vanya			
Granata			

COUNTY Wood DATE Feb. 16, 1972
 S. R. #199 WEATHER cl'd 8-22-73
 SEC. _____ TEMP. _____

DESCRIPTION Ref. Mon. JOB NO. _____

