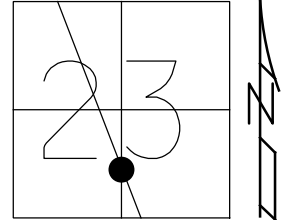


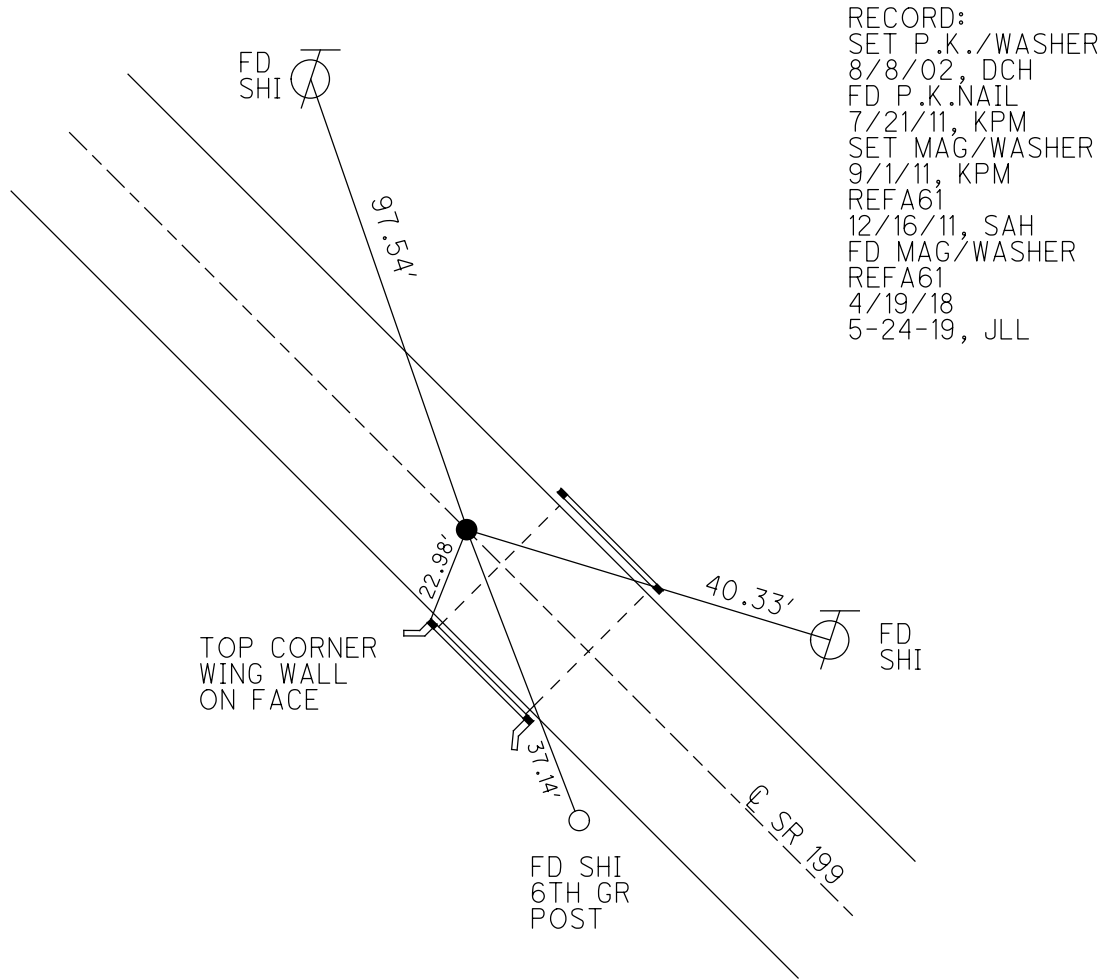
O.D.O.T. DISTRICT 2 SURVEY OFFICE (USE ONLY)

PERSONNEL \_\_\_\_\_ REFERENCE NO. 61 A SHEET 48 OF 75  
 NOTES AUBLE DATE 4-19-18 ROUTE SR 199  
 H.C. LEU WEATHER BREEZY COUNTY WOOD  
 R.C. AUBLE TEMP. 45° TOWNSHIP WEBSTER  
 DWG BY AUBLE PID 101221 SECTION 23  
 T 6 N R 11 E

TYPE MONUMENT MAG/WASHER  
 ON SURFACE - ~~BELOW~~ ON  
 OFFSET  $\text{C}$  PAVEMENT 1.4' ~~RT~~ : RT  
8.3' TO RT EDGE PAVEMENT  
 STATION: 1206+08



HORIZ.DATUM: NAD83 (2011) GEOID: 2012A  
 GRID: NORTHING: 654326.027 EASTING: 1677816.922

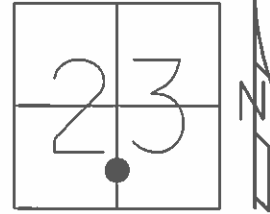


RECORD:  
 SET P.K./WASHER  
 8/8/02, DCH  
 FD P.K.NAIL  
 7/21/11, KPM  
 SET MAG/WASHER  
 9/1/11, KPM  
 REFA61  
 12/16/11, SAH  
 FD MAG/WASHER  
 REFA61  
 4/19/18  
 5-24-19, JLL

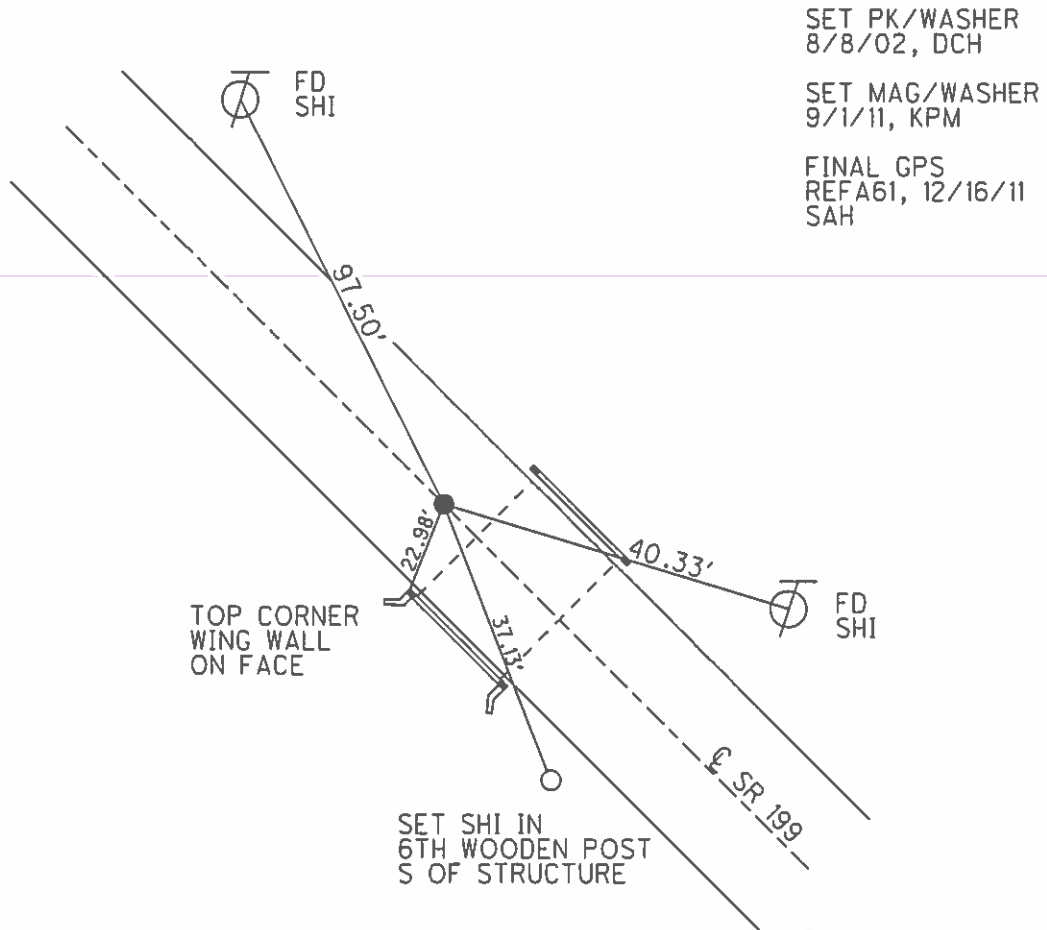
O.D.O.T. DISTRICT 2 SURVEY OFFICE (USE ONLY)

PERSONNEL \_\_\_\_\_ REFERENCE NO. 61 A SHEET 47 OF 72  
 NOTES MOSER DATE 7/21/11 ROUTE SR 199  
 H.C. MOSER WEATHER SUNNY COUNTY WOOD  
 R.C. HARBAUGH TEMP. 100° TOWNSHIP WEBSTER  
 \_\_\_\_\_ SECTION 23  
 \_\_\_\_\_ T 6 N R 11 E

TYPE MONUMENT \_\_\_\_\_ PK/NAIL \_\_\_\_\_  
 ON SURFACE - ~~BELOW~~ \_\_\_\_\_ ON \_\_\_\_\_  
~~LEFT - C PAV'T~~ - RIGHT 2.0'  
8.3' TO RT EDGE PAVEMENT  
 S.L.M. \_\_\_\_\_ 1206+08



GRID: NORTHING: 654326.054 EASTING: 1677816.833



O.D.O.T. DISTRICT 2 SURVEY OFFICE

PERSONNEL

REFERENCE NO. 61A

SHEET 27 OF 45

NOTES ROUSOS

DATE 4-2-02

ROUTE S.R. 199

H.C. HOMAN

WEATHER CLOUDY

COUNTY WOOD

R.C. ROUSOS

TEMP. 60

TOWNSHIP WEBSTER

SECTION 23

T 6 N R 11 E

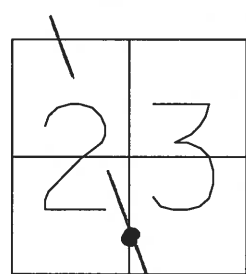
TYPE MONUMENT PK NAIL

ON SURFACE - ~~BELOW~~ YES

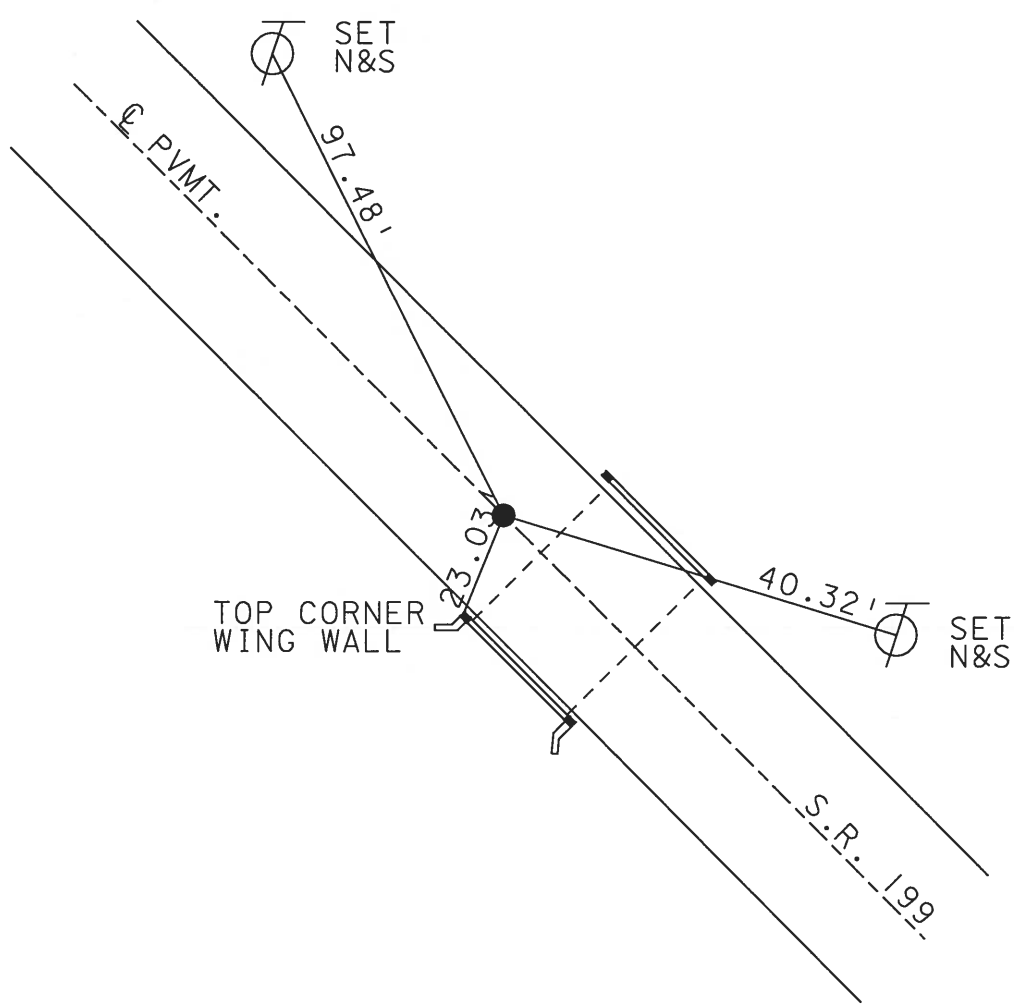
LEFT - Q PAV'T - RIGHT           

           TO            EDGE PAVEMENT

S.L.M. 1206+08



SET PK & WASHER  
8-08-02 D.C.H.



# O.D.O.T. DISTRICT 2 SURVEY OFFICE

PERSONNEL

REFERENCE NO. 61-A

SHEET 2 OF 21

NOTES 1. Stone

H.C. D. Curtis

R.C. J. Haushalter

DATE 6 Sept. 88

WEATHER Fair

TEMP. 67°

ROUTE SR#199

COUNTY Wood

TOWNSHIP Webster

SECTION 23

T.      R.     

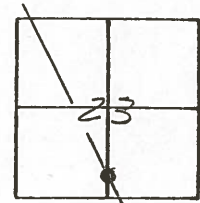
TYPE MONUMENT PK Nail

ON SURFACE - BELOW Surface

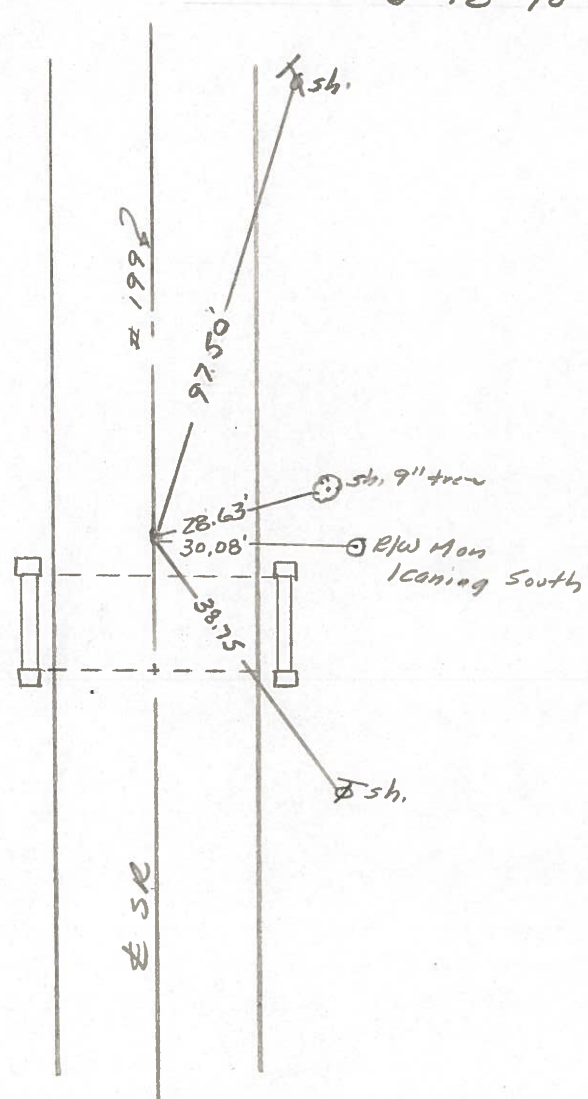
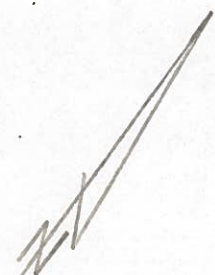
LEFT - & PAV'T. - RIGHT     

     TO      EDGE PAVEMENT

S.L.M. 1205+84



SET P.K. NAIL TO SURFACE  
5-18-90 *D.J.C.*



Q.D.O.T. DISTRICT 2 SURVEY OFFICE

SHEET \_\_\_\_\_ OF \_\_\_\_\_

County WOOD S.R. 199

Township WEBSTER

Section 23

T6N, R11E

Personnel HOFFMAN

LOEHRKE

HOUSEHOLDER

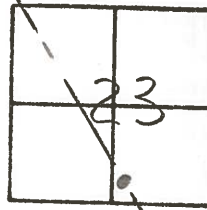
BARNHISEL

#61-A

Date 1-5-83

Weather CLOUDY

Temp. +32°



Fd R.R. SPK 1" Below surface

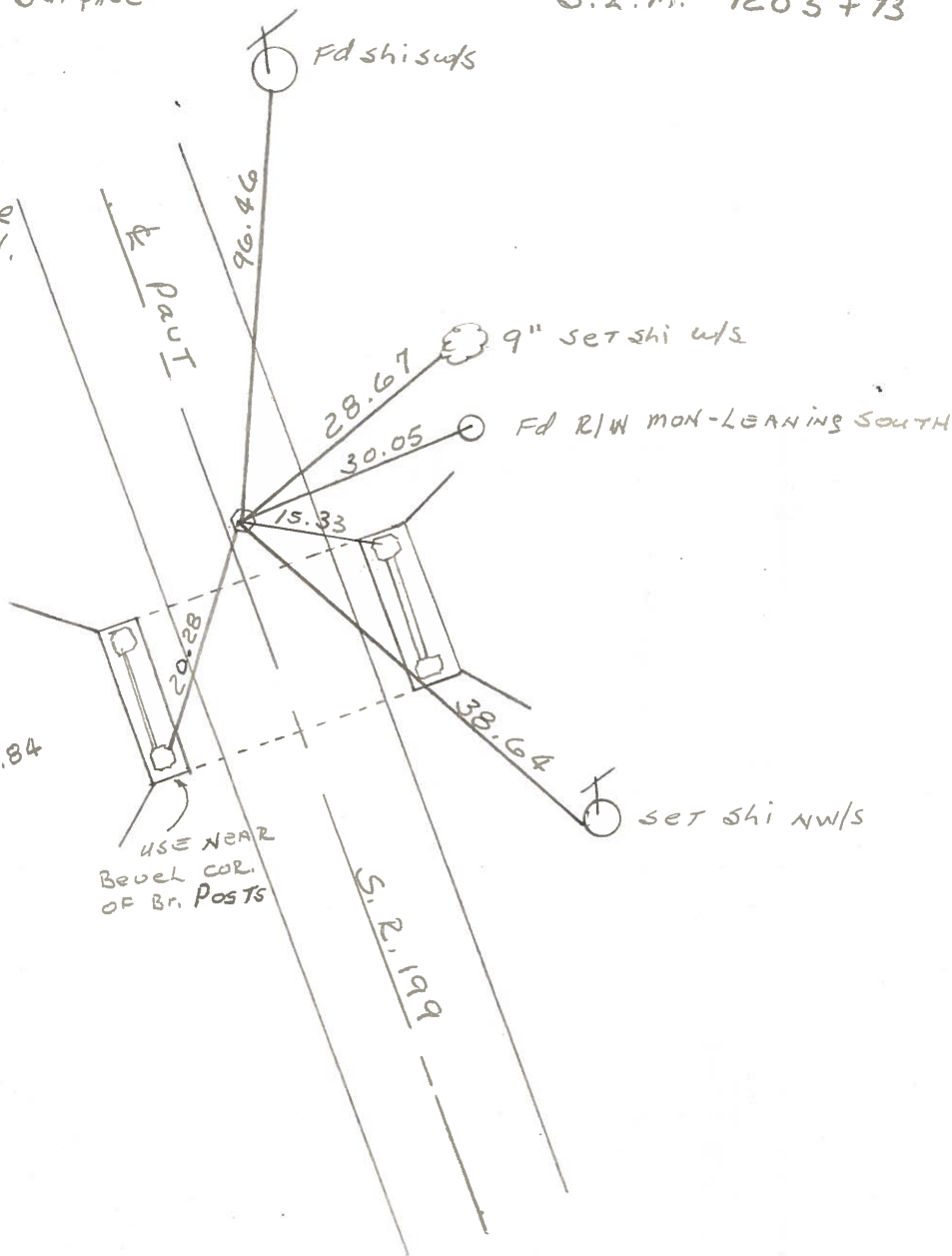
1.7' RT. of & PAUT

7.0' TO E.E.P.

10.5' TO W.E.P.

S.L.M. 1205+73

SET P.K./WASHER  
7-21-83 S.W.H.



BRIDGE  
No. 22.84

USE NEAR  
BEVEL COR.  
OF BR. POSTS

S.R. 199

County WOOD S.R. 199

Date 9-14-71

Township WEBSTER

Weather \_\_\_\_\_

Section 23

Temp. \_\_\_\_\_

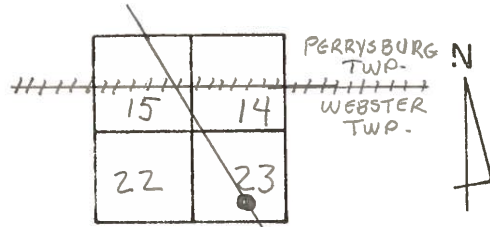
T N, R E

Personnel TOMSIK

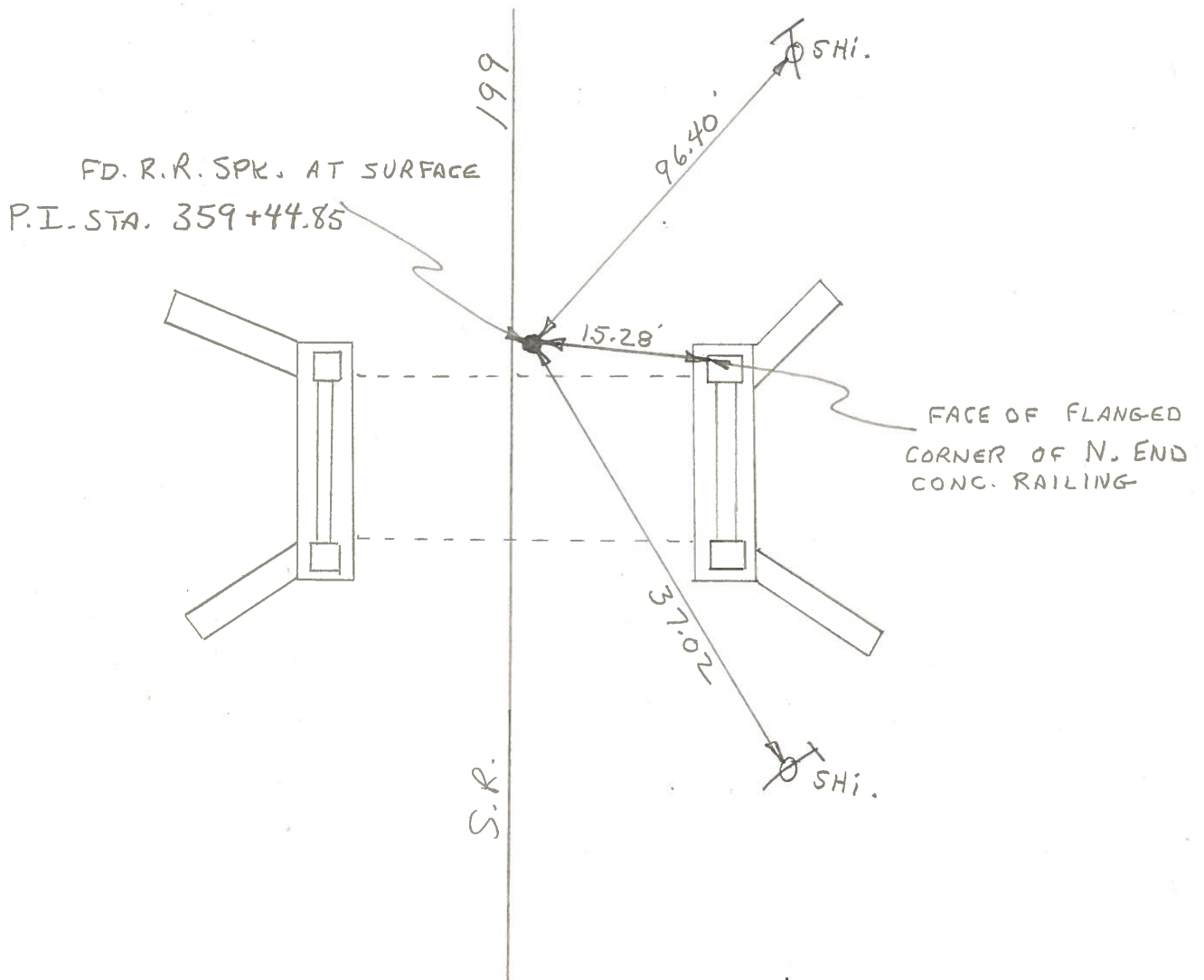
NEUSER

VANYO

GRANATA



# 61-A POINT IS 300'± NORTH OF S.R. 582 & SR. 199



COPIED

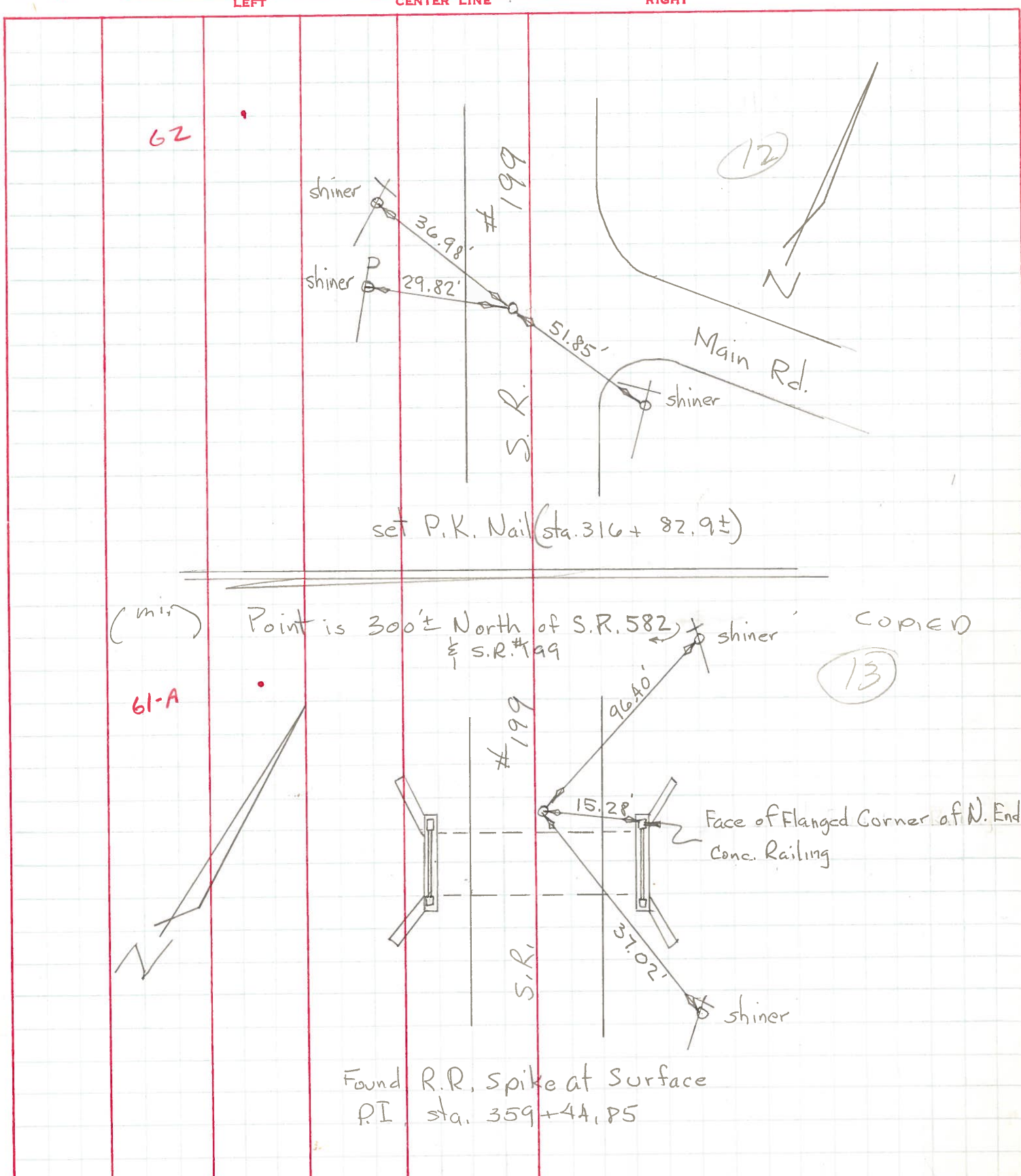
PERSONNEL	TITLE	PERSONNEL	TITLE
Tomsic			
Neuser			
Vanya			
Granata			

COUNTY Wood DATE Sept. 14, 1971

S. R. # 199 WEATHER \_\_\_\_\_

SEC. \_\_\_\_\_ TEMP. \_\_\_\_\_

DESCRIPTION Ref. Mon. JOB NO. \_\_\_\_\_



(12)

(13)

COPIED