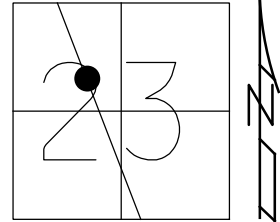


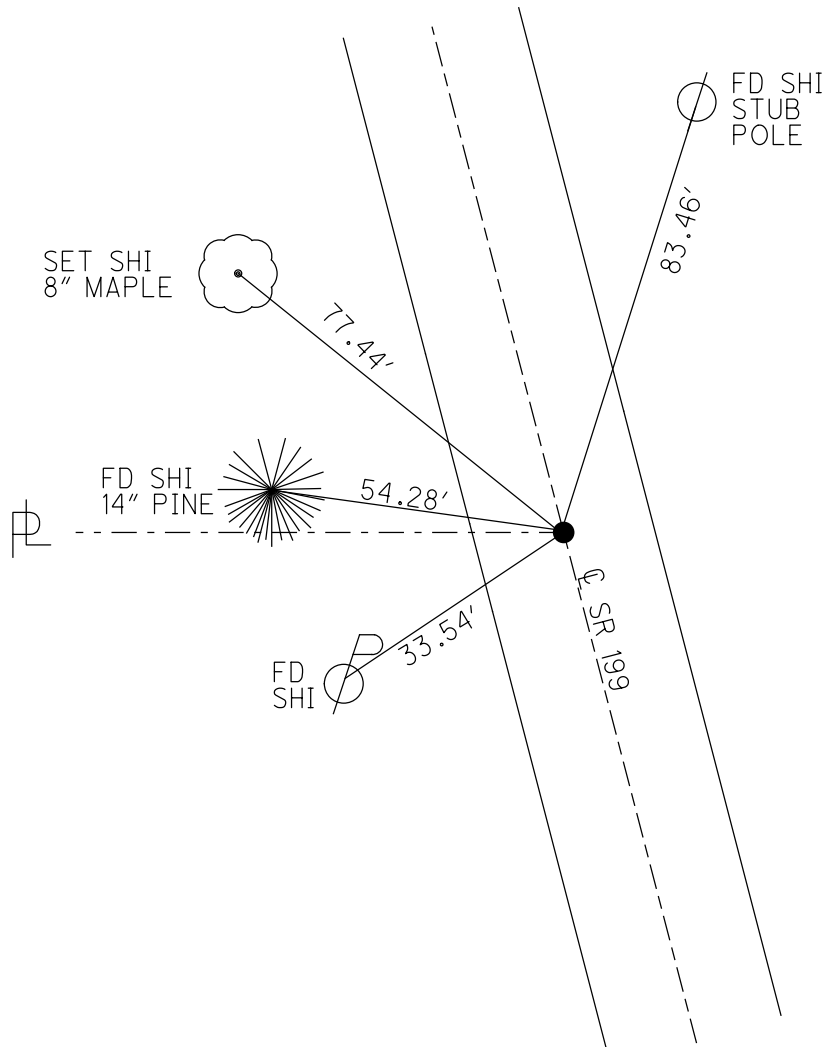
O.D.O.T. DISTRICT 2 SURVEY OFFICE (USE ONLY)

PERSONNEL _____ REFERENCE NO. 62 SHEET 49 OF 75
 NOTES AUBLE DATE 4-19-18 ROUTE SR 199
 H.C. LEU WEATHER BREEZY COUNTY WOOD
 R.C. AUBLE TEMP. 45° TOWNSHIP WEBSTER
 DWG BY AUBLE PID 101221 SECTION 23
 T 6 N R 11 E

TYPE MONUMENT MAG NAIL
 ON SURFACE - ~~BELOW~~ ON
 OFFSET Q PAVEMENT ON ~~LT~~ : ~~RT~~
9.4' TO RT EDGE PAVEMENT
 STATION: 1241+74



HORIZ.DATUM: NAD83 (2011) GEOID: 2012A
 GRID: NORTHING: 657508.738 EASTING: 1676234.909

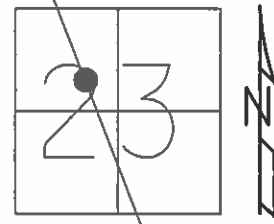


RECORD:
 SET P.K./WASHER
 8/8/02, DCH
 FD P.K./WASHER
 7/21/11, KPM
 SET MAG/WASHER
 9/1/11, KPM
 REF62
 12/16/11, MC
 FD MAG NAIL
 REF62
 4/19/18
 5-24-19, JLL

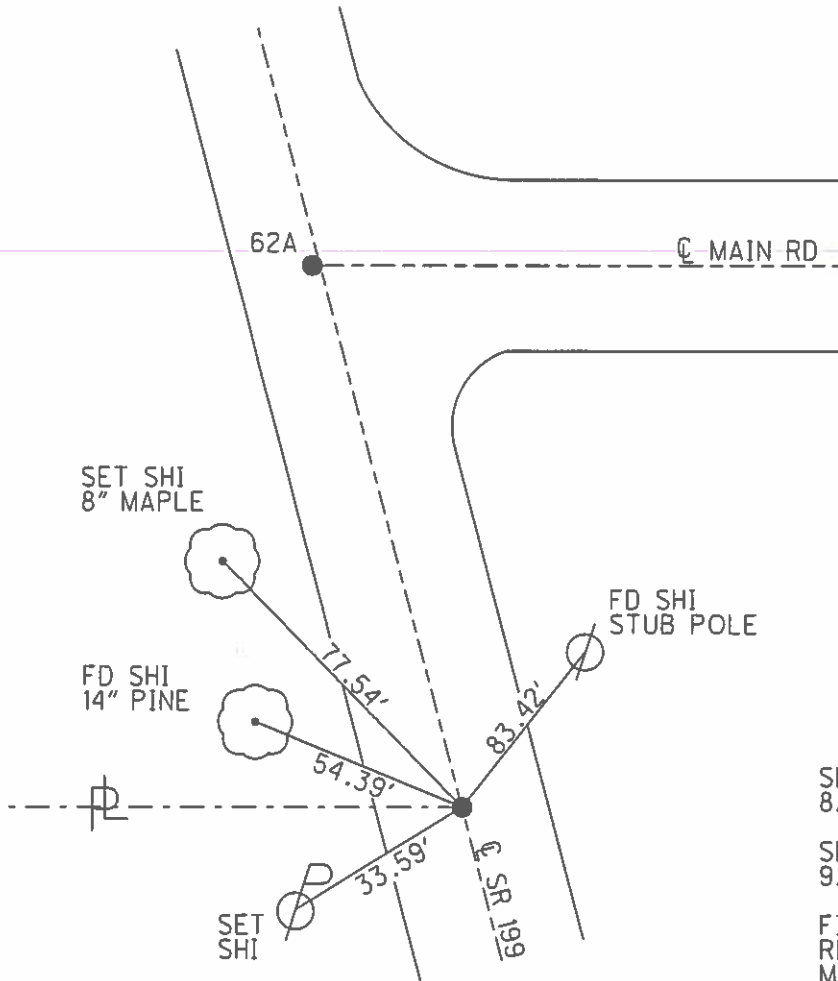
O.D.O.T. DISTRICT 2 SURVEY OFFICE (USE ONLY)

PERSONNEL _____ REFERENCE NO. 62 SHEET 48 OF 72
 NOTES MOSER DATE 7/21/11 ROUTE SR 199
 H.C. MOSER WEATHER SUNNY COUNTY WOOD
 R.C. HARBAUGH TEMP. 100° TOWNSHIP WEBSTER
 SECTION 23
T 6 N R 11 E

TYPE MONUMENT PK/WASHER
 ON SURFACE - ~~BELOW~~ ON
 LEFT - CL PAV'T - ~~RIGHT~~ ON
9.4' TO RT. EDGE PAVEMENT
 S.L.M. 1241+74



GRID: NORTHING: 657508.723 EASTING: 1676234.843



SET PK/WASHER
8/8/02, DCH

SET MAG/WASHER
9/1/11, KPM

FINAL GPS
REF62, 12/16/11
MC

O.D.O.T. DISTRICT 2 SURVEY OFFICE

PERSONNEL

REFERENCE NO. 62

SHEET 28 OF 45

NOTES ROUSOS

DATE 4-2-02

ROUTE 199

H.C. HOMAN

WEATHER CLOUDY

COUNTY WOOD

R.C. ROUSOS

TEMP. 60

TOWNSHIP WEBSTER

SECTION 23

T 6 N R 11 E

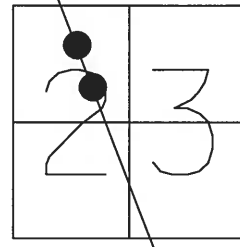
TYPE MONUMENT PK'S IN WASHERS

ON SURFACE - ~~BELOW~~ YES

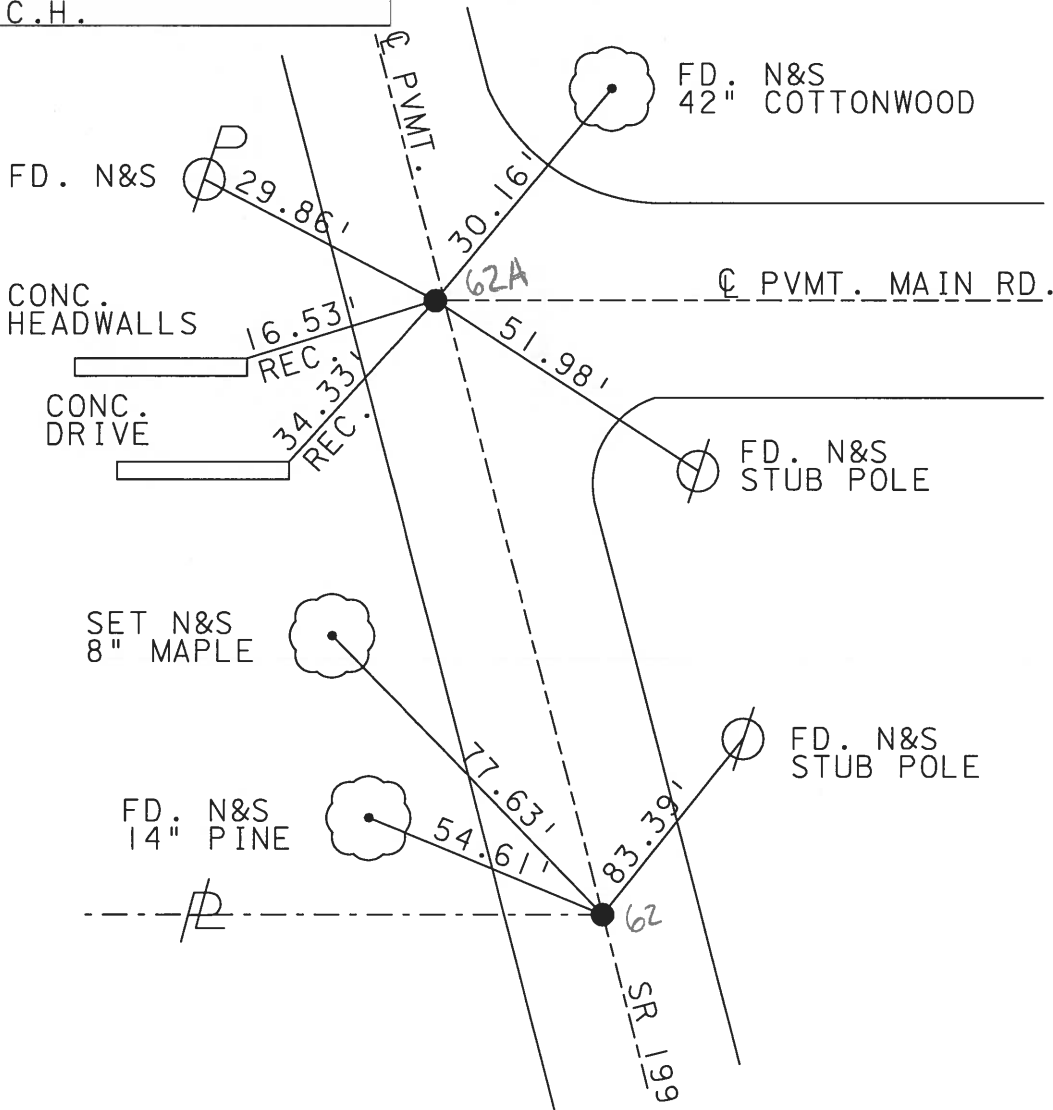
LEFT - Q PAV'T - RIGHT

 TO EDGE PAVEMENT

S.L.M. 1241+74 1248+65



SET PK'S & WASHER'S
8-8-02
D.C.H.



Q.D.O.T. DISTRICT 2 SURVEY OFFICE

SHEET _____ OF _____

County WOOD S.R. 199

Township WEBSTER

Section 23

T6N, R11E

Personnel HOFFMAN

LOEHRKE

HOUSEHOLDER

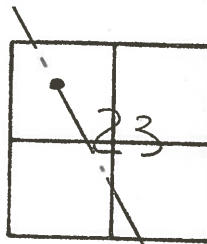
BARNHISEL

#62

Date 1-5-83

Weather Cloudy

Temp. +32°



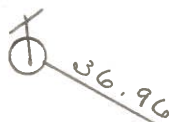
Fd P.K. @ surface
2.2' LT. of & PAUT 199
6.9' TO W.E.P.
6.2' South of & PAUT MAIN Rd.

SLM 1248+39

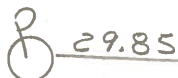
SET P.K./WASHER
7-22-83 M.D.B.

Record:
STA 316+82.9 ±

Fd shi se/s



Fd shi e/s



USE NEAR COR. HDWLS 16.58

CONC. DRIVE 34.30

62A

30.35

30.11

51.86

S.R. 199

SET shi sw/s
42" Willow

3/4" I. ROD

& PAUT MAIN ROAD.

Fd shi sw/s

SET P.K./WASHER
7-22-83 M.D.B.

SET shi sw/s



SET shi sw/s .14" PINE 55.13

62

83.45

49.55

SET shi sw/s



Fd P.K. @ surface
SOURCE UNKNOWN
0.4 RT. of & PAUT
8.0 TO E.E.P.
9.3 TO W.E.P.
SLM 1241+27

