

O.D.O.T. DISTRICT 2 SURVEY OFFICE (USE ONLY)

PERSONNEL

REFERENCE NO. 64 A

SHEET 54 OF 75

NOTES AUBLE

DATE 4-23-18

ROUTE SR 199

H.C. LEU

WEATHER SUNNY

COUNTY WOOD

R.C. AUBLE

TEMP. 56°

TOWNSHIP PERRYSBURG

SECTION 34

DWG BY AUBLE PID 101221

T 6 N R 11 E

TYPE MONUMENT R.R.SPIKE

ON SURFACE - ~~BELOW~~ ON

OFFSET ☉ PAVEMENT 2.3' LT : ~~RT~~

8.1' TO LT EDGE PAVEMENT

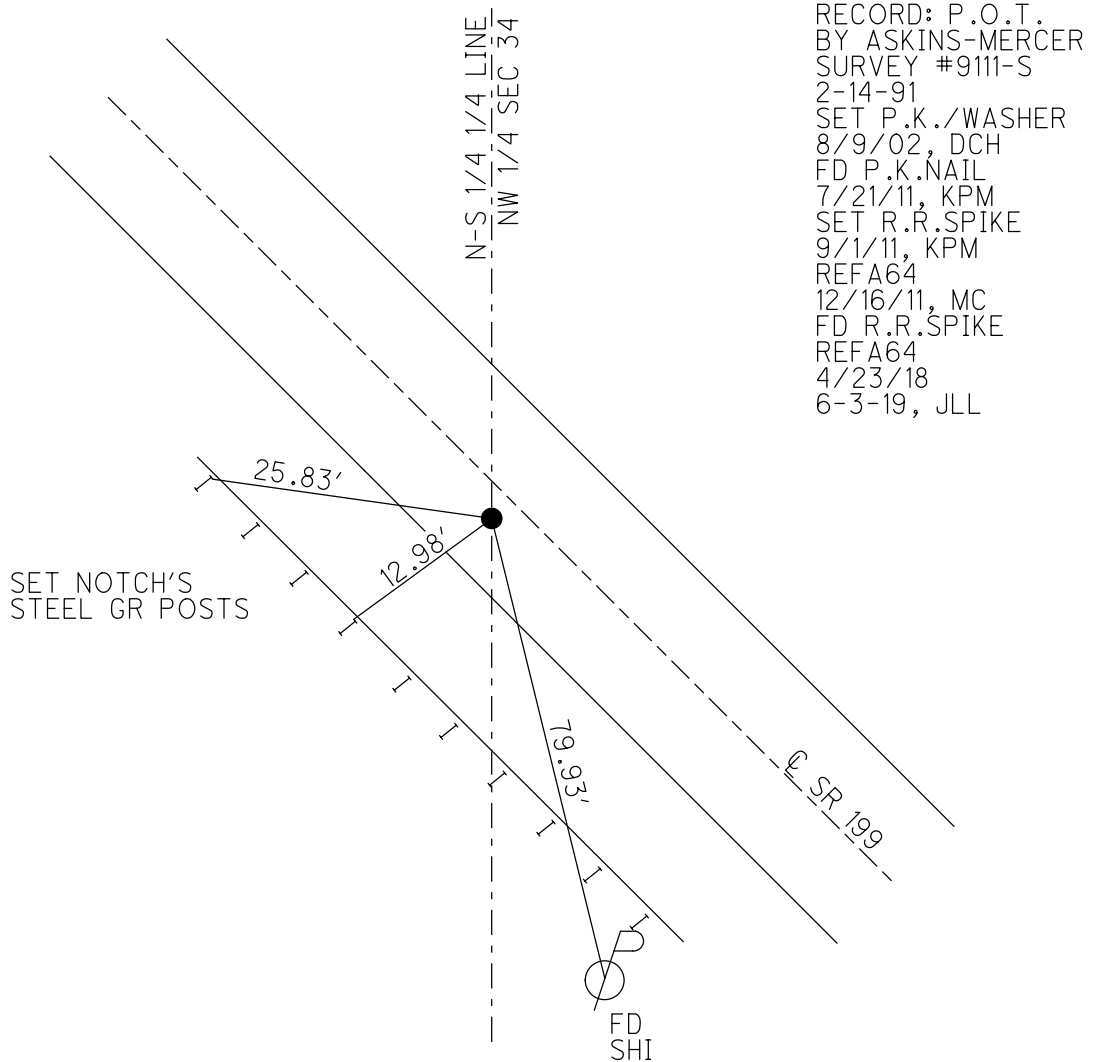
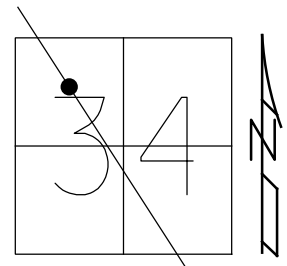
STATION: 1339+66

HORZ.DATUM: NAD83 (2011)

GEOID: 2012A

GRID: NORTHING: 666314.888

EASTING: 1671866.954

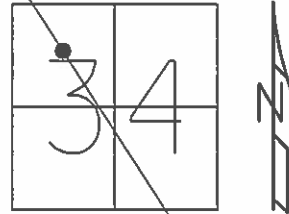


RECORD: P.O.T.
 BY ASKINS-MERCER
 SURVEY #9111-S
 2-14-91
 SET P.K./WASHER
 8/9/02, DCH
 FD P.K.NAIL
 7/21/11, KPM
 SET R.R.SPIKE
 9/1/11, KPM
 REFA64
 12/16/11, MC
 FD R.R.SPIKE
 REFA64
 4/23/18
 6-3-19, JLL

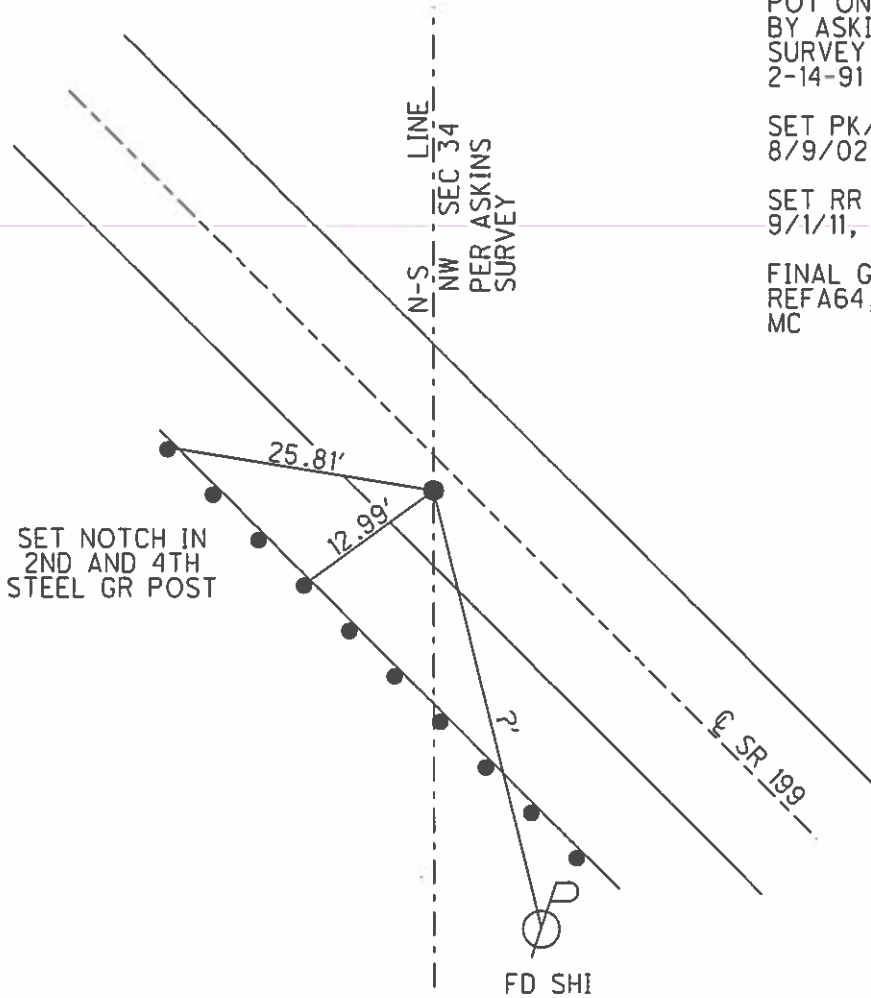
O.D.O.T. DISTRICT 2 SURVEY OFFICE (USE ONLY)

PERSONNEL _____ REFERENCE NO. 64 A SHEET 53 OF 72
 NOTES MOSE DATE 7/21/11 ROUTE SR 199
 H.C. MOSE WEATHER SUNNY COUNTY WOOD
 R.C. HARBAUGH TEMP. 90° TOWNSHIP PERRYSBURG
 _____ SECTION 34
 _____ T 6 N R 11 E

TYPE MONUMENT _____ PK _____
 ON SURFACE - ~~BELOW~~ _____ ON _____
 LEFT - ~~C PAV'T~~ - ~~RIGHT~~ _____ 2.3'
 _____ 8.1' TO LT. EDGE PAVEMENT
 S.L.M. _____ 1339+66



GRID: NORTHING: 666314.962 EASTING: 1671866.916



RECORD:
 POT ON SR 199 C
 BY ASKINS-MERCER
 SURVEY #9111-S
 2-14-91

SET PK/WASHER
 8/9/02, DCH

SET RR SPIKE
 9/1/11, KPM

FINAL GPS
 REFA64, 12/16/11
 MC

O.D.O.T. DISTRICT 2 SURVEY OFFICE

PERSONNEL

REFERENCE NO. 64A

SHEET 32 OF 45

NOTES MOSER

DATE 4-6-02

ROUTE S.R. 199

H.C. HOMAN

WEATHER SUNNY

COUNTY WOOD

R.C. ROUSOS

TEMP. +35°

TOWNSHIP PERRYSBURG

CANTERBURY

SECTION 34

T 6 N R 11 E

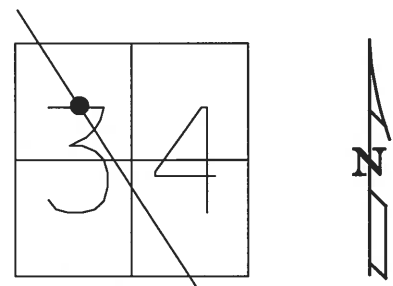
TYPE MONUMENT _____ P.K. _____

ON SURFACE - ~~BELOW~~ _____ YES _____

LEFT - Q PAV'T - ~~RIGHT~~ _____ 2.3' LT. _____

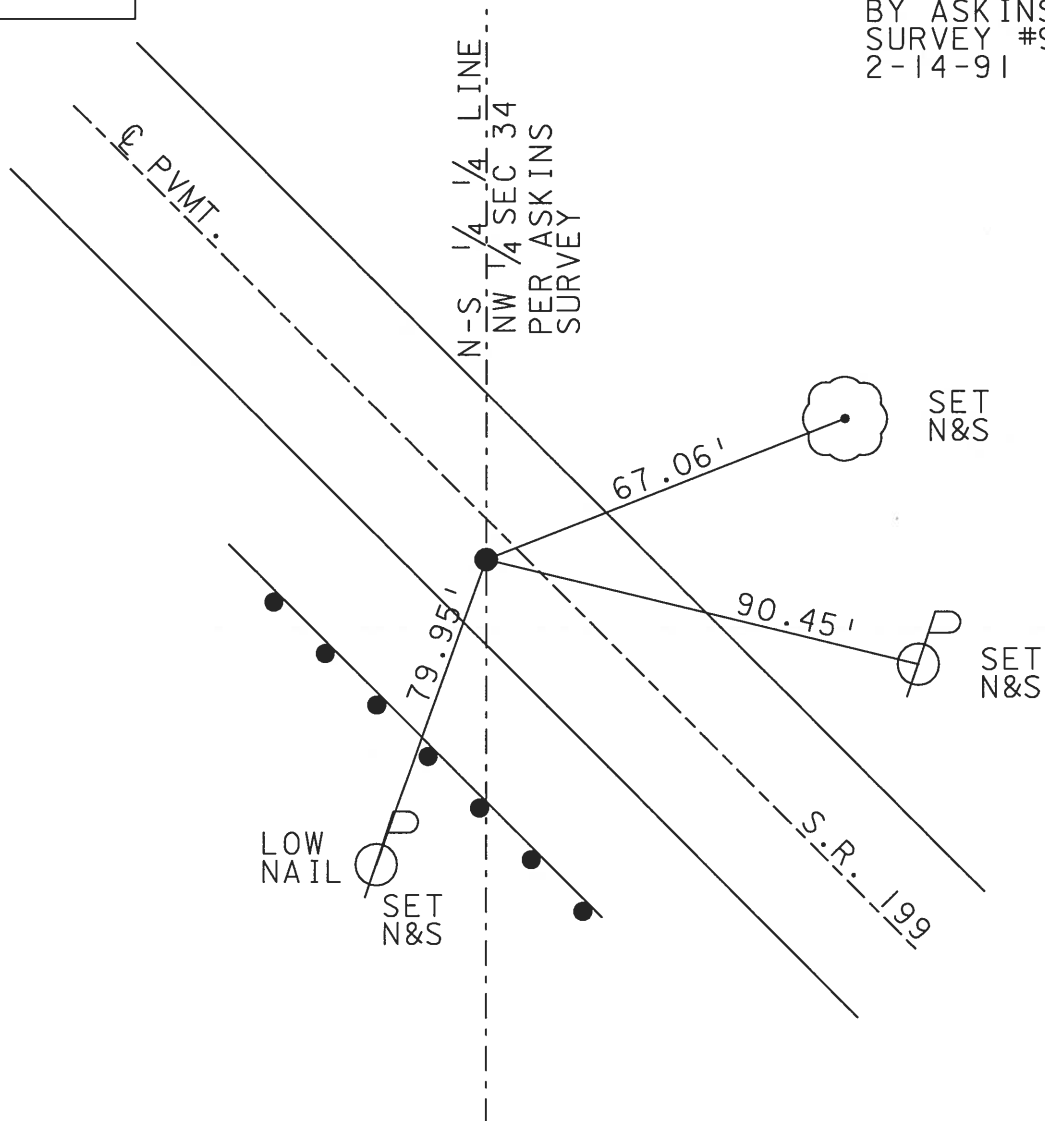
7.7' TO LT. EDGE PAVEMENT _____

S.L.M. _____ 1339+66 _____



SET MAG NAIL &
WASHER 8-9-02
D.C.H.

RECORD:
P.O.T. ON SR 199 Q
BY ASKINS-MERCER
SURVEY #9111-S
2-14-91



O.D.O.T. DISTRICT 2 SURVEY OFFICE

PERSONNEL

REFERENCE NO. 64-A

SHEET OF

NOTES HOFFMAN

H.C. LOHRKE

R.C. BARNAISEL

DATE 3-8-91

WEATHER CLEAR

TEMP. 35

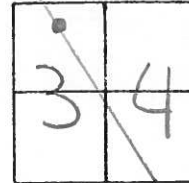
ROUTE SR 199

COUNTY WOOD

TOWNSHIP PERRYSBURG

SECTION 34

T 6 N R 11 E
TWP 4 USR.



TYPE MONUMENT P.K.

ON SURFACE - BELOW YES

LEFT - PAV'T. - RIGHT 2.3'

7.7 TO LT EDGE PAVEMENT

S.L.M. 1339+66

P.O.T. ON SR 199 & SET BY ASKINS-MERCER SURVEY #9111-S 2-14-91

