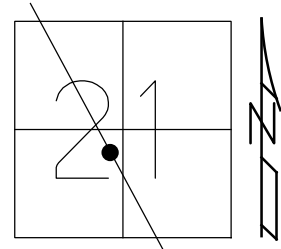


O.D.O.T. DISTRICT 2 SURVEY OFFICE (USE ONLY)

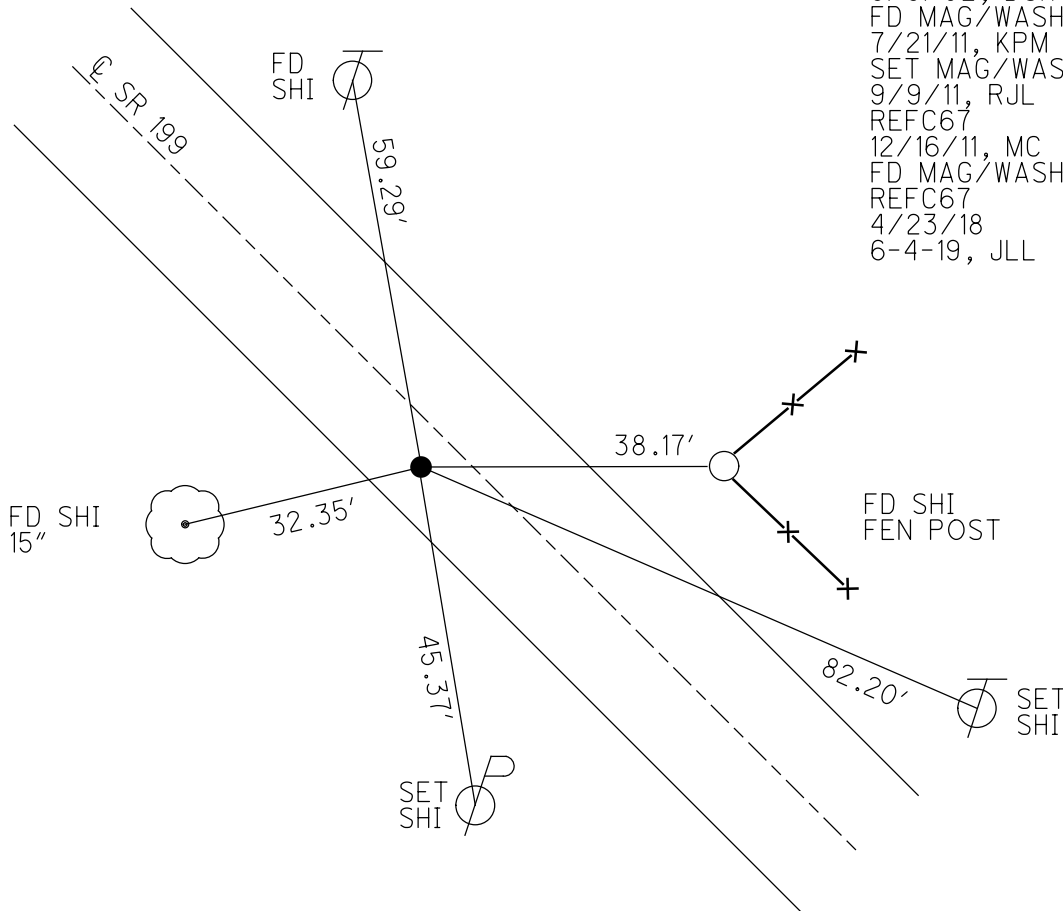
PERSONNEL _____ REFERENCE NO. 67 C SHEET 63 OF 75
 NOTES AUBLE DATE 4-23-18 ROUTE SR 199
 H.C. LEU WEATHER SUNNY COUNTY WOOD
 R.C. AUBLE TEMP. 68° TOWNSHIP PERRYSBURG
 DWG BY AUBLE PID 101221 SECTION 21
 T 6 N R 11 E

TYPE MONUMENT MAG/WASHER
 ON SURFACE - ~~BELOW~~ ON
 OFFSET Q PAVEMENT 4.3' LT : ~~RT~~
6.2' TO LT EDGE PAVEMENT
 STATION: 1429+22



HORIZ.DATUM: NAD83 (2011) GEOID: 2012A
 GRID: NORTHING: 674328.496 EASTING: 1667867.925

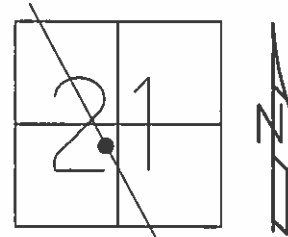
RECORD:
 SET P.K./WASHER
 8/9/02, DCH
 FD MAG/WASHER
 7/21/11, KPM
 SET MAG/WASHER
 9/9/11, RJL
 REFC67
 12/16/11, MC
 FD MAG/WASHER
 REFC67
 4/23/18
 6-4-19, JLL



O.D.O.T. DISTRICT 2 SURVEY OFFICE (USE ONLY)

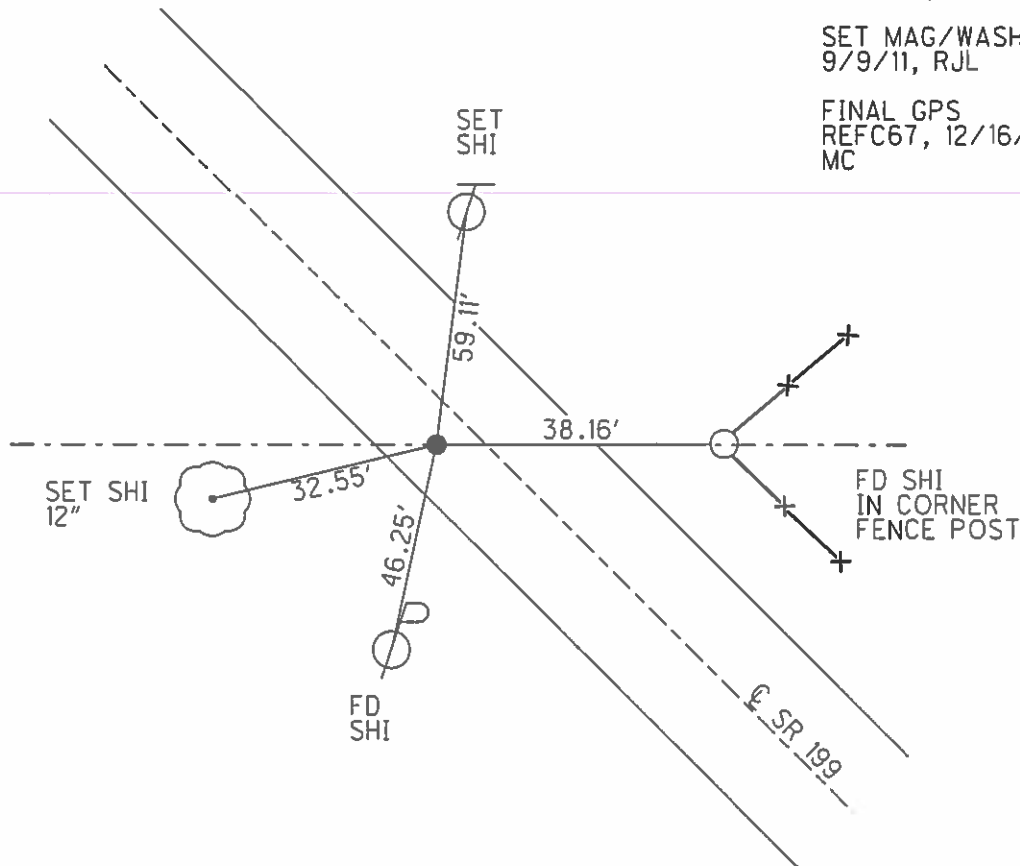
PERSONNEL _____ REFERENCE NO. 67 C SHEET 62 OF 72
 NOTES MOSER DATE 7/21/11 ROUTE SR 199
 H.C. MOSER WEATHER SUNNY COUNTY WOOD
 R.C. HARBAUGH TEMP. 85° TOWNSHIP PERRYSBURG
 SECTION 21
 T 6 N R 11 E

TYPE MONUMENT PK/WASHER
 ON SURFACE - ~~BELOW~~ ON
 LEFT - ~~C PAV'T~~ - RIGHT 3.8'
6.2' TO LT EDGE PAVEMENT
 S.L.M. 1429+22



GRID: NORTHING: 674328.460 EASTING: 1667867.928

SET PK/WASHER
 8/9/02, DCH
 SET MAG/WASHER
 9/9/11, RJL
 FINAL GPS
 REFC67, 12/16/11
 MC



O.D.O.T. DISTRICT 2 SURVEY OFFICE

PERSONNEL

REFERENCE NO. 67C

SHEET 39 OF 45

NOTES MOSER

DATE 4-6-02

ROUTE S.R. 199

H.C. HOMAN

WEATHER CLOUDY

COUNTY WOOD

R.C. ROUSOS

TEMP. +36°

TOWNSHIP PERRYSBURG

CANTERBURY

SECTION 21

T 6 N R 11 E

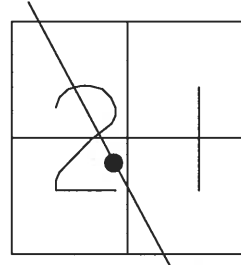
TYPE MONUMENT PK NAIL & WASHER

ON SURFACE - ~~BELOW~~ YES

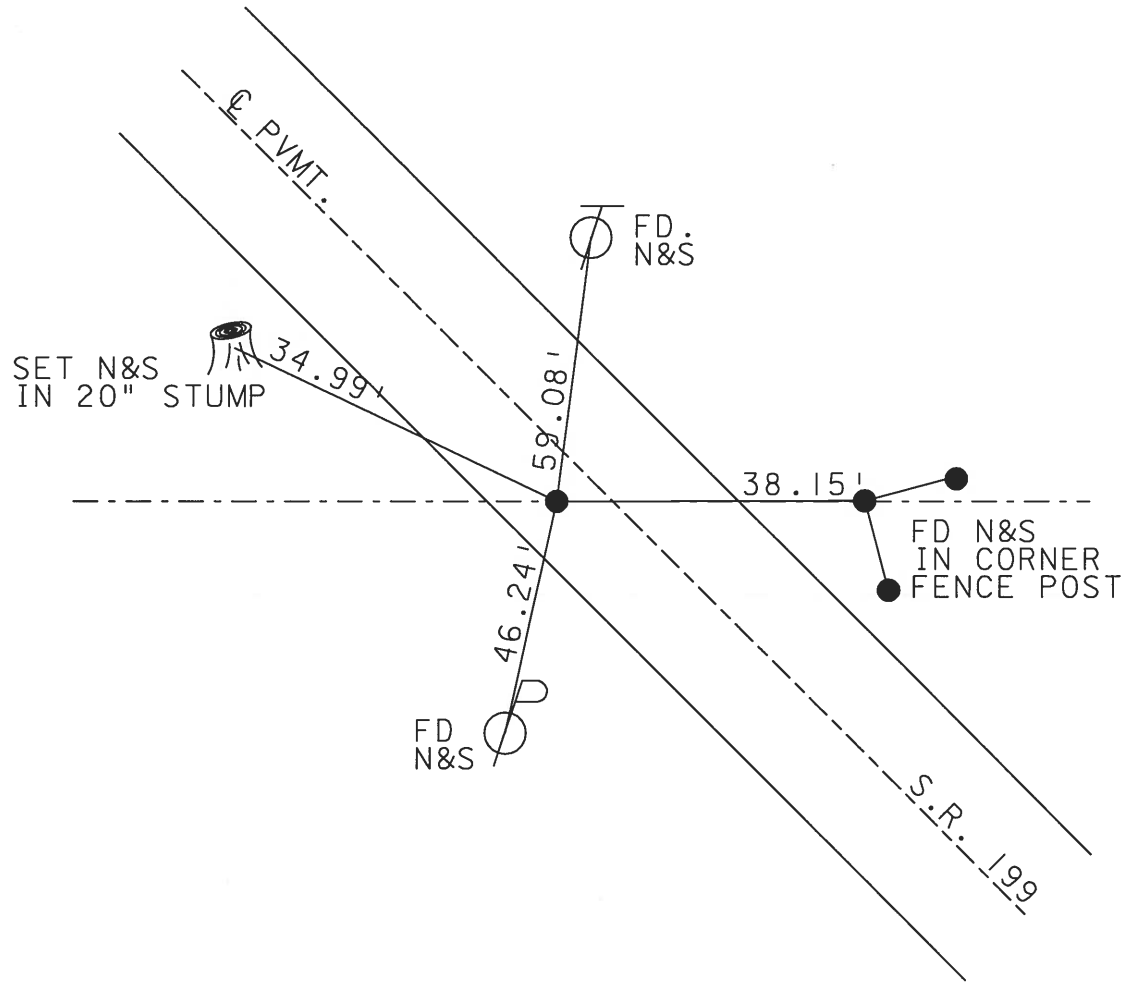
LEFT - Q PAV'T - ~~RIGHT~~ 4.5' LT.

TO EDGE PAVEMENT

S.L.M. 1429+22



SET MAG NAIL
& WASHER
8-09-02 D.C.H.



O.D.O.T. DISTRICT 2 SURVEY OFFICE

PERSONNEL _____

REFERENCE NO. b7-C

SHEET 12 OF 21

NOTES D. CURTIS

H.C. J. HOUSEHOLDER

DATE 9-8-88

ROUTE S.R. #199

R.C. _____

WEATHER MILD

COUNTY WOOD

TEMP. 75° ±

TOWNSHIP PERRYBURG

SECTION 21

T _____ R _____

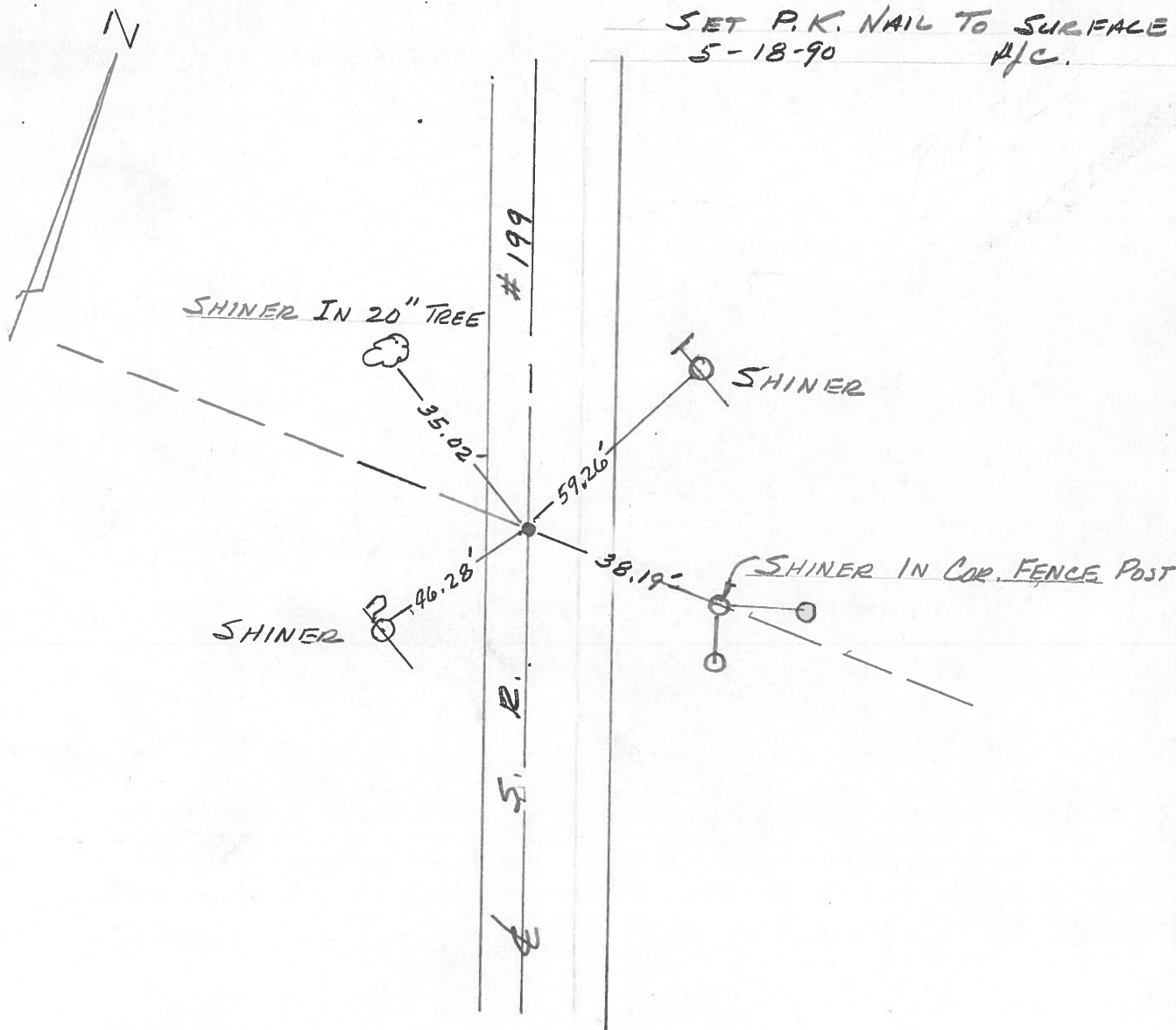
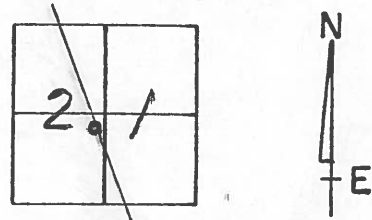
TYPE MONUMENT SMALL P.K. NAIL

ON SURFACE - BELOW SURFACE

LEFT- & PAV'T. - RIGHT _____

_____ TO _____ EDGE PAVEMENT

S.L.M. 1429 + 22



SET P.K. NAIL TO SURFACE
5-18-90
H/C.