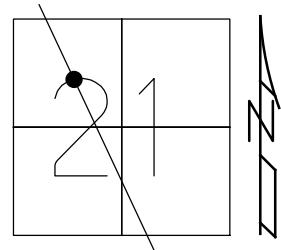


O.D.O.T. DISTRICT 2 SURVEY OFFICE (USE ONLY)

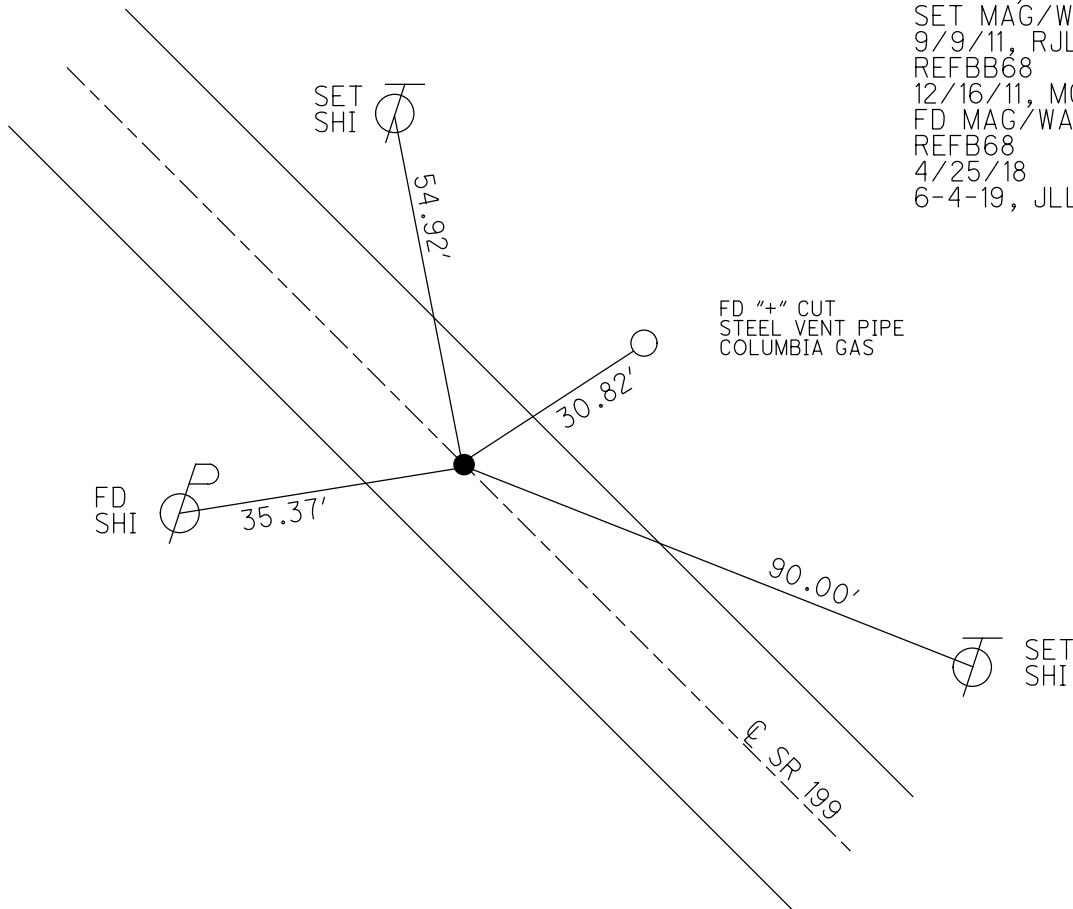
PERSONNEL \_\_\_\_\_ REFERENCE NO. 68 B SHEET 67 OF 75  
 NOTES AUBLE DATE 4-25-18 ROUTE SR 199  
 H.C. LEU WEATHER CLOUDY COUNTY WOOD  
 R.C. AUBLE TEMP. 60° TOWNSHIP PERRYSBURG  
 DWG BY AUBLE PID 101221 SECTION 21  
 T 6 N R 11 E

TYPE MONUMENT MAG/WASHER  
 ON SURFACE - ~~BELOW~~ ON  
 OFFSET Q PAVEMENT ON ~~LT~~ : ~~RT~~  
9.8' TO RT EDGE PAVEMENT  
 STATION: 1460+62

HORIZ.DATUM: NAD83 (2011) GEOID: 2012A  
 GRID: NORTHING: 677141.748 EASTING: 1666471.127



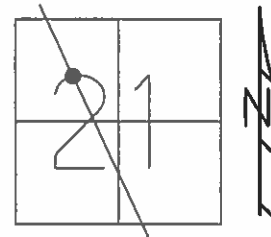
RECORD:  
 SET P.K./WASHER  
 8/9/02, DCH  
 FD P.K./WASHER  
 7/21/11, KPM  
 SET MAG/WASHER  
 9/9/11, RJL  
 REFBB68  
 12/16/11, MC  
 FD MAG/WASHER  
 REFBB68  
 4/25/18  
 6-4-19, JLL



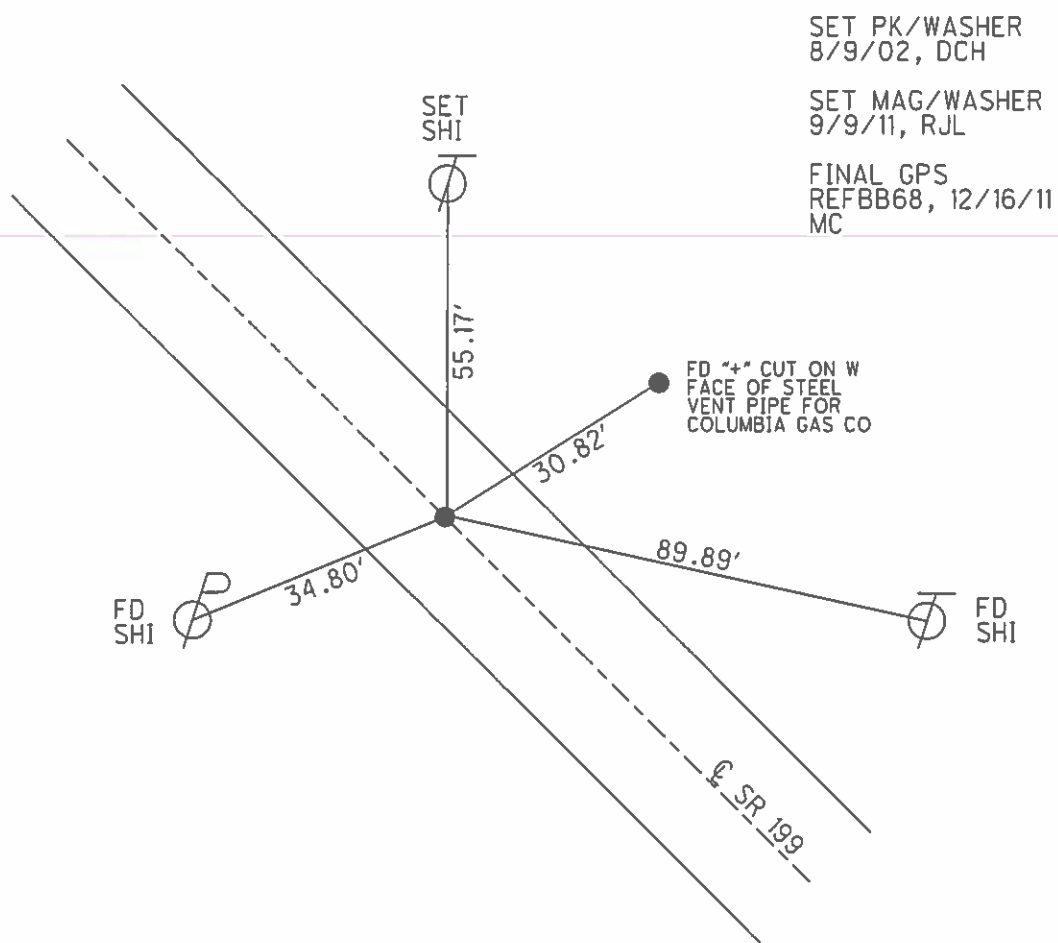
O.D.O.T. DISTRICT 2 SURVEY OFFICE (USE ONLY)

PERSONNEL \_\_\_\_\_ REFERENCE NO. 68 B SHEET 65 OF 72  
 NOTES MOSER DATE 7/21/11 ROUTE SR 199  
 H.C. MOSER WEATHER SUNNY COUNTY WOOD  
 R.C. HARBAUGH TEMP. 85° TOWNSHIP PERRYSBURG  
 SECTION 21  
T 6 N R 11 E

TYPE MONUMENT PK/WASHER  
 ON SURFACE - ~~BELOW~~ ON  
~~LEFT - C PAV'T - RIGHT~~ 0.4'  
9.8' TO RT EDGE PAVEMENT  
 S.L.M. 1460+62



GRID: NORTHING: 677141.726 EASTING: 1666471.069



O.D.O.T. DISTRICT 2 SURVEY OFFICE

PERSONNEL

REFERENCE NO. 68B

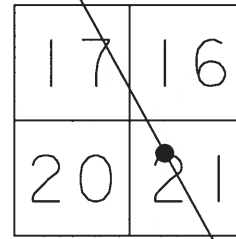
SHEET 41 OF 45

NOTES MOSE  
 H.C. HOMAN  
 R.C. ROUSOS  
CANTERBURY

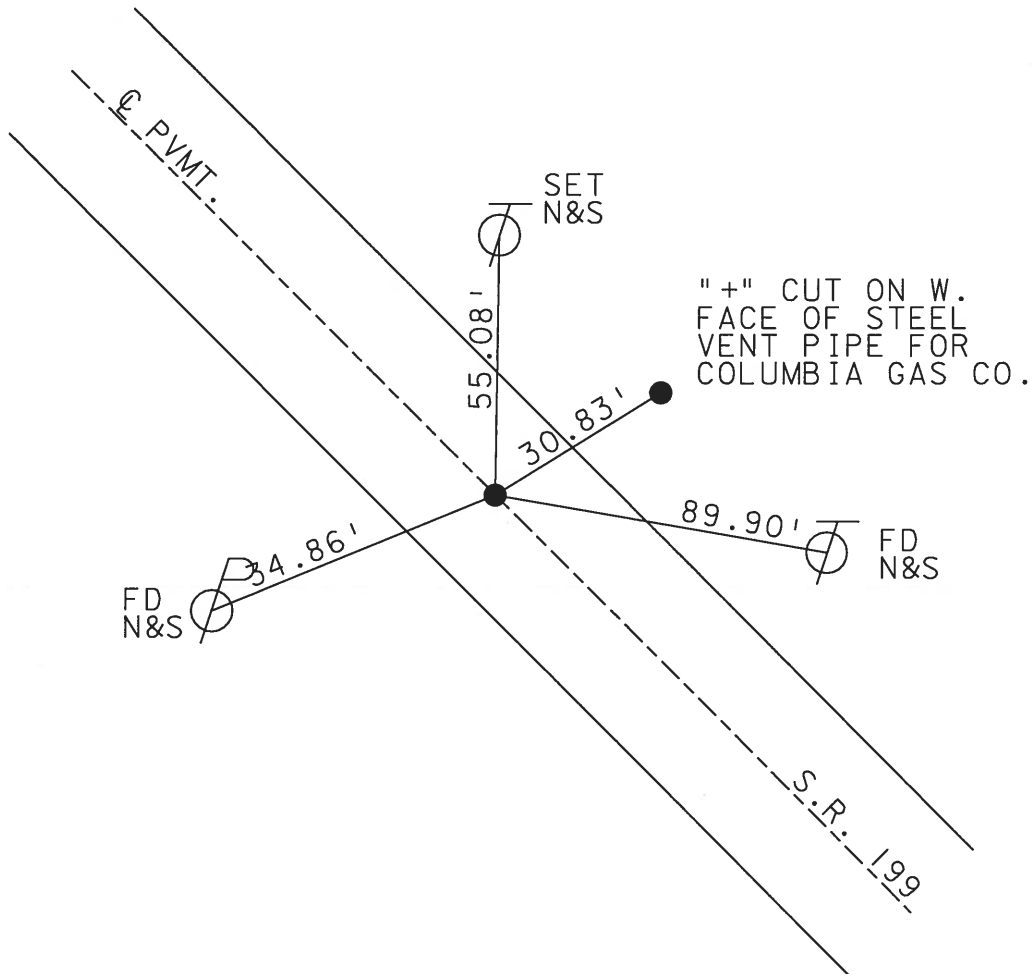
DATE 4-6-02  
 WEATHER CLOUDY  
 TEMP. +36°

ROUTE S.R. 199  
 COUNTY WOOD  
 TOWNSHIP PERRYSBURG  
 SECTION 21  
T 6 N R 11 E

TYPE MONUMENT P.K. & WASHER  
 ON SURFACE - ~~BELOW~~ YES  
~~LEFT - C~~ PAV'T - ~~RIGHT~~ YES  
TO EDGE PAVEMENT  
 S.L.M. 1460+62



SET MAG NAIL  
 & WASHER  
 8-09-02 D.C.H.



# O.D.O.T. DISTRICT 2 SURVEY OFFICE

PERSONNEL \_\_\_\_\_

REFERENCE NO. 68-6

SHEET 14 OF 21

NOTES D. CURTIS

H.C. J. HOUSEHOLDER

DATE 9-9-88

ROUTE S.R. #199

R.C. \_\_\_\_\_

WEATHER MILD

COUNTY WOOD

\_\_\_\_\_

TEMP. 75°±

TOWNSHIP PERRYSBURG

\_\_\_\_\_

SECTION 21

T \_\_\_\_\_ R \_\_\_\_\_

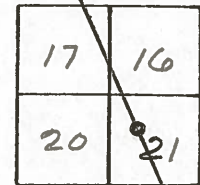
TYPE MONUMENT P.K. NAIL IN WASHER

ON SURFACE - BELOW SURFACE

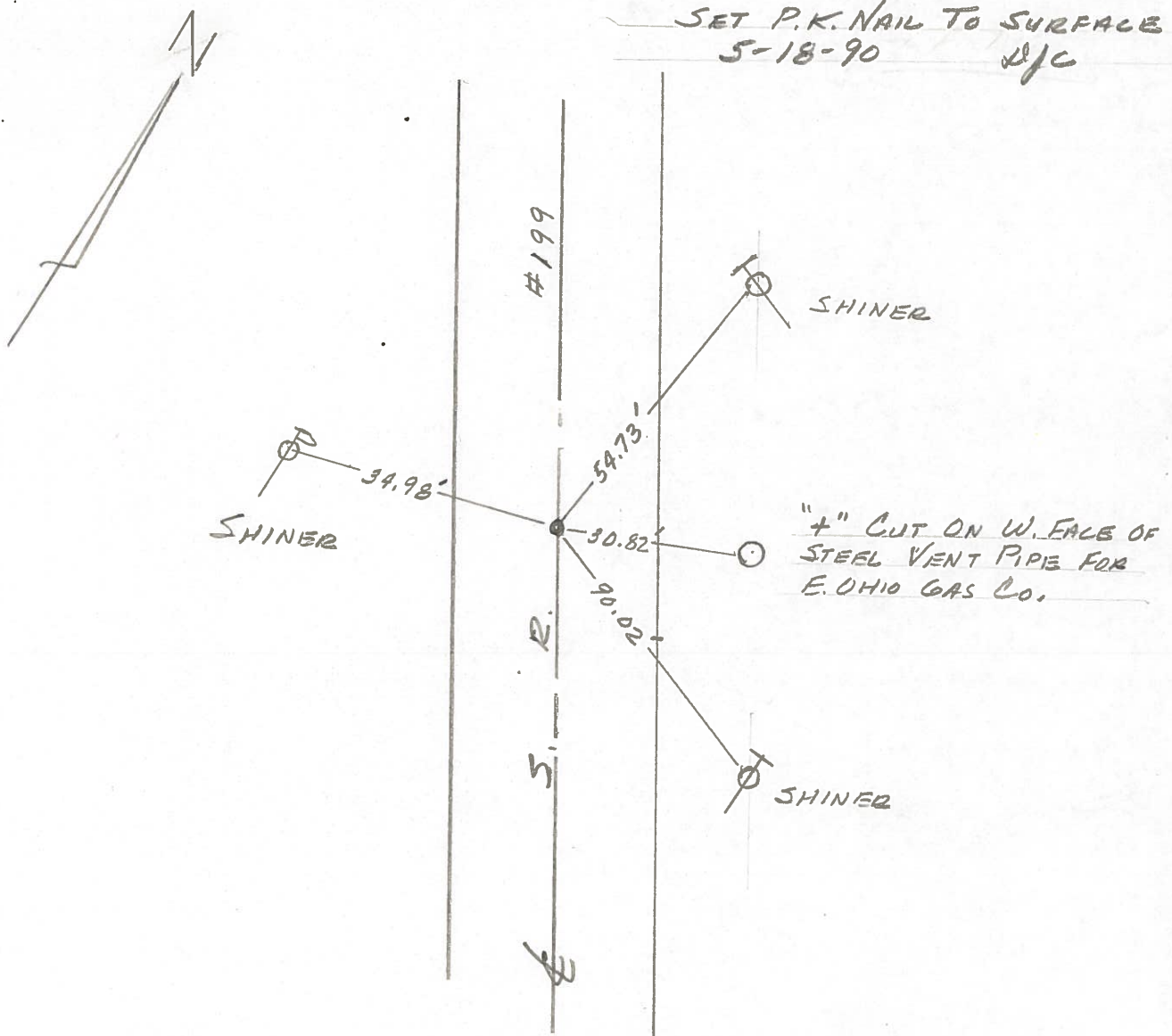
LEFT-☉ PAW'T. - RIGHT \_\_\_\_\_

\_\_\_\_\_ TO \_\_\_\_\_ EDGE PAVEMENT

S.L.M. 1460 + 62



SET P.K. NAIL TO SURFACE  
5-18-90 *DJC*



QD.O.T. DISTRICT 2 SURVEY OFFICE

SHEET \_\_\_\_\_ OF \_\_\_\_\_

County Wood S.R. 199

Township Perrysburg

Section 21

T4N, R1E U.S.R.

Personnel HOFFMAN

HOUSEHOLDER

LOEHRKE

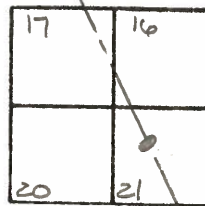
BARNHISEL

68-B

Date Dec 30, 82

Weather Cloudy

Temp. +24°



Fd P.K. @ surface  
9.5' TO W.E.P  
9.7' TO E.E.P

S.L.M. 1460+57

APPROX. 788' S. of ROACH TOWN Rd

Record: STA 104+65.03

SET P.K. WASHER  
7-22-83 M.D.B.

34.99  
SET Shi.  
SE/S  
5-12-83

54.72  
Fd Shi S/S

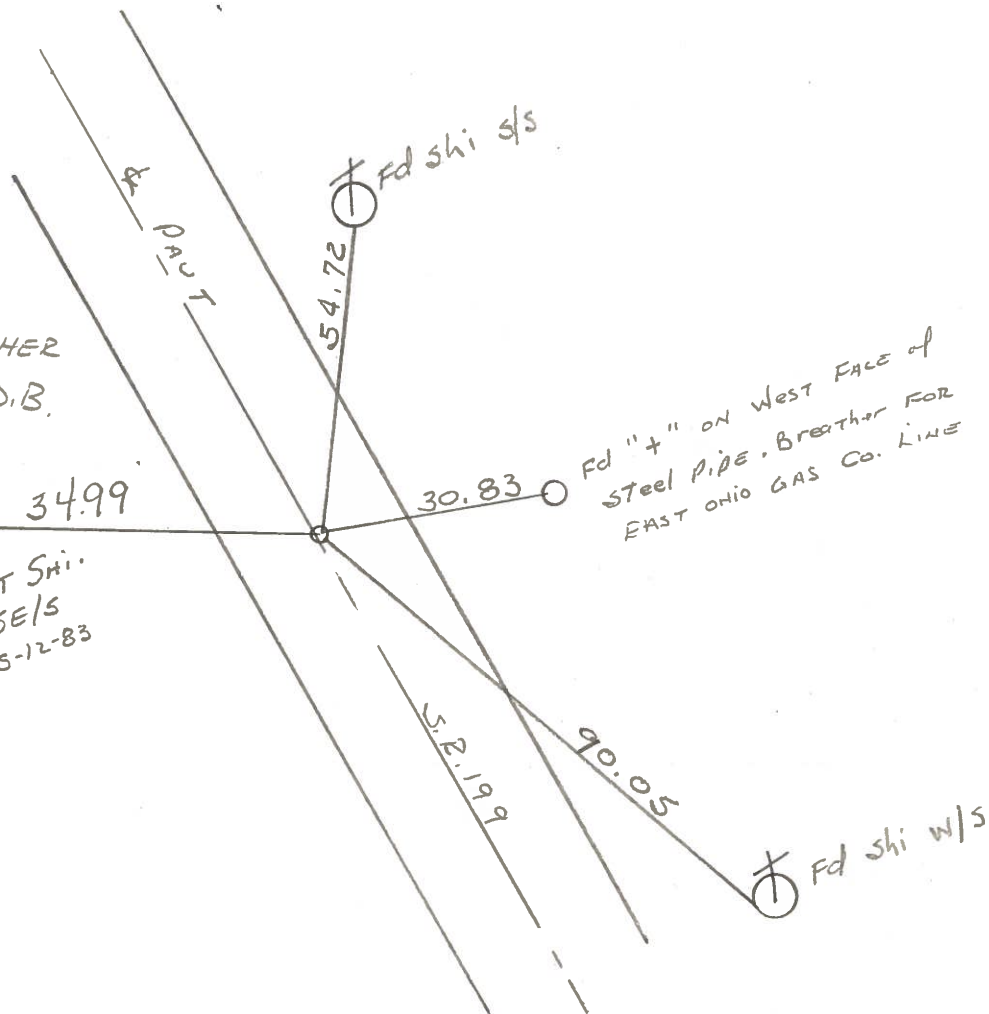
30.83

Fd "x" ON West FACE of  
STEEL PIPE. Breather FOR  
EAST OHIO GAS Co. LINE

S.R. 199

90.05

Fd Shi W/S



County WOOD S.R. 199

Township PERRYSBURG

Section 21

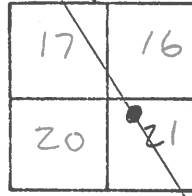
T N, R E

Personnel TOMSIK  
NEUSER  
VANYO  
GRANATA  
CURTIS

Date SEPT. 23 1971

Weather \_\_\_\_\_

Temp. \_\_\_\_\_



68-B POINT IS 750 ± SOUTH OF ROACHTON

FOUND P.K. NAIL  
AT SURFACE  
STA. 104 + 65.03

