

O.D.O.T. DISTRICT 2 SURVEY OFFICE (USE ONLY)

PERSONNEL

REFERENCE NO. 72 B

SHEET 7 OF 9

NOTES STONE  
 H.C. CURTIS  
 R.C. AHMAD  
HOUSEHOLDER

DATE 4/9/90  
 WEATHER CLOUDY  
 TEMP. 46°

ROUTE SR 199  
 COUNTY WOOD  
 TOWNSHIP PERRYSBURG  
 SECTION 12 MILE RESERVE  
 T 4 US

DWG BY NIESE PID \_\_\_\_\_

TYPE MONUMENT P.K. NAIL

ON SURFACE - ~~BELOW~~ ON

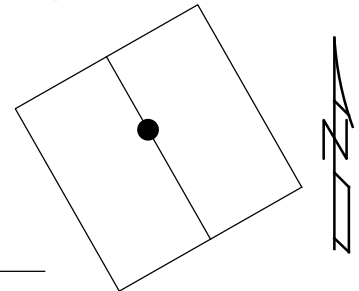
OFFSET Q PAVEMENT ON LT : RT

- TO - EDGE PAVEMENT

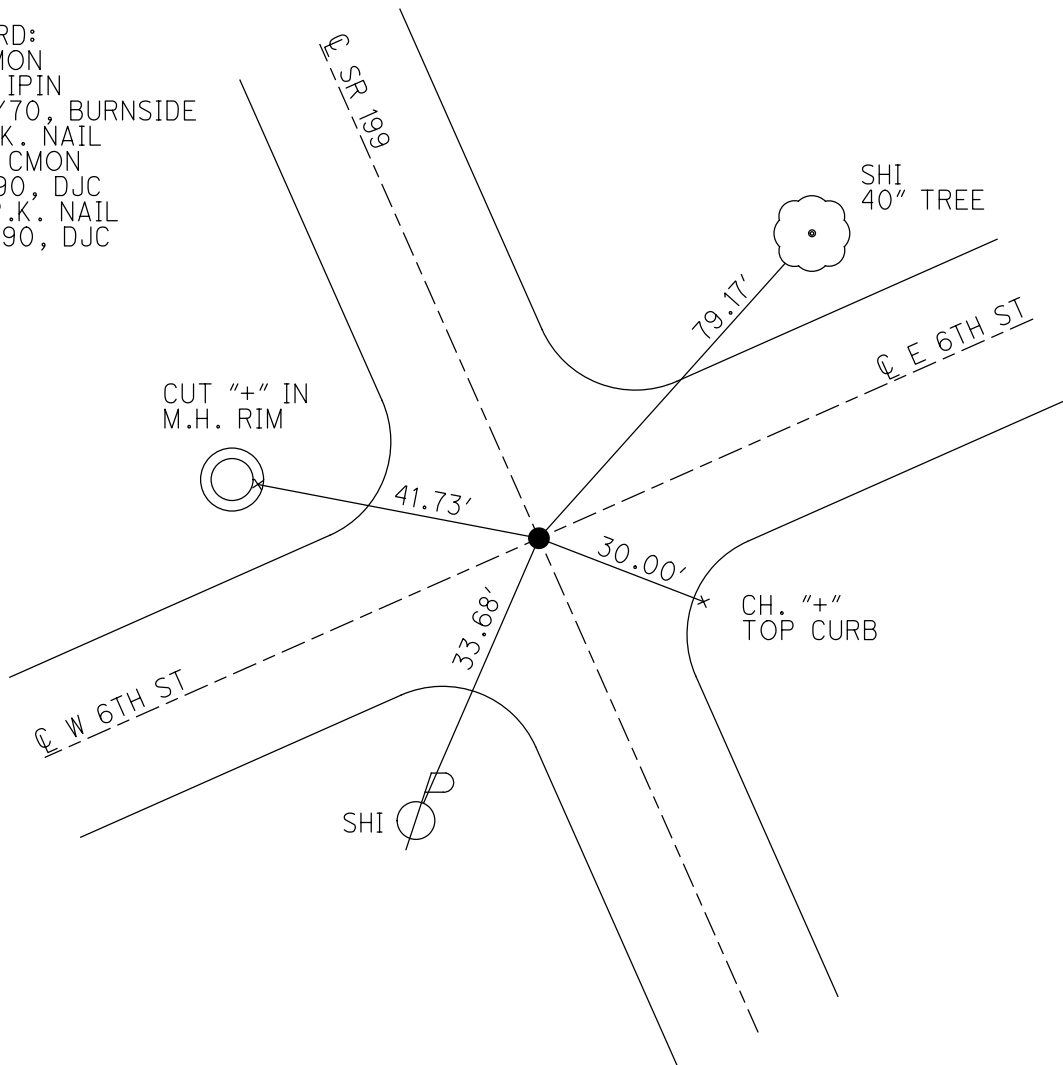
STATION: 1610+40

HORZ. DATUM: \_\_\_\_\_ GEOID: \_\_\_\_\_

GRID: NORTHING: \_\_\_\_\_ EASTING: \_\_\_\_\_



RECORD:  
 FD CMON  
 W/ 1" IPIN  
 2/26/70, BURNSIDE  
 FD P.K. NAIL  
 OVER CMON  
 4/9/90, DJC  
 SET P.K. NAIL  
 6/15/90, DJC



# O.D.O.T. DISTRICT 2 SURVEY OFFICE

PERSONNEL

REFERENCE NO. 72-B

SHEET 20 OF 21

NOTES L. Stover

H.C. D. Curtis

R.C. B. Ahmed

J. Householder

DATE 9 April 90

WEATHER Cloudy

TEMP. 46°

ROUTE SR#199

COUNTY Wood

TOWNSHIP Panglossburg

SECTION \_\_\_\_\_

T \_\_\_\_\_ R \_\_\_\_\_

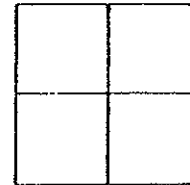
TYPE MONUMENT PK Nail once Con. Mem.

ON SURFACE - BELOW Surface

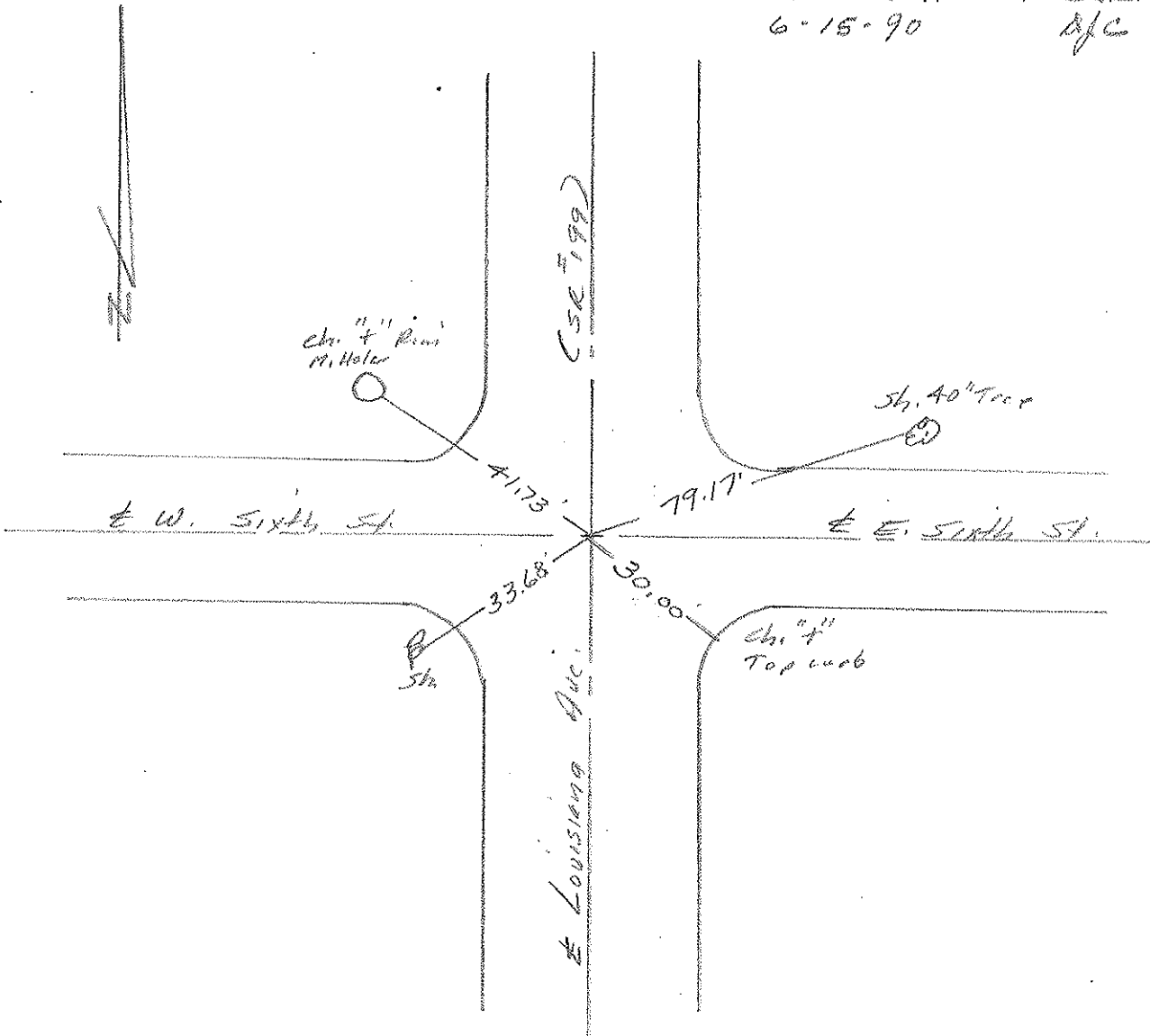
LEFT - & PAV'T. - RIGHT \_\_\_\_\_

\_\_\_\_\_ TO \_\_\_\_\_ EDGE PAVEMENT

S.L.M. \_\_\_\_\_



SET P.K. NAIL TO SURFACE  
6-15-90  
DJC



PERSONNEL	TITLE	PERSONNEL	TITLE	COUNTY	DATE
BURNSIDE				WOOD	2-26-70
SMITH				S. R. 199 (OLD U.S. #23)	WEATHER CLEAR
HOFFMAN				SEC. PERRYSBURG CORP.	TEMP. +16°
DESCRIPTION CONTROL TIES				(LOUISIANA AVE)	JOB NO.
LEFT		CENTER LINE		RIGHT	

