

O.D.O.T. DISTRICT 2 SURVEY OFFICE (USE ONLY)

PERSONNEL \_\_\_\_\_

REFERENCE NO. 72 D

SHEET 9 OF 9

NOTES BURNSIDE

DATE 2/26/70

ROUTE SR 199

H.C. SMITH

WEATHER CLEAR

COUNTY WOOD

R.C. HOFFMAN

TEMP. 18°

TOWNSHIP PERRYSBURG

SECTION 12 MILE RESERVE

DWG BY NIESE PID \_\_\_\_\_

T 4 US

TYPE MONUMENT 1" IPIN

~~ON SURFACE~~ - BELOW 0.3'

OFFSET Q PAVEMENT ON LT : RT

- TO - EDGE PAVEMENT

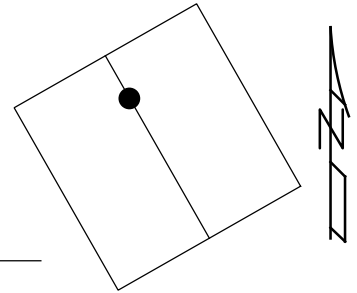
STATION: 1619+38

HORZ. DATUM: \_\_\_\_\_

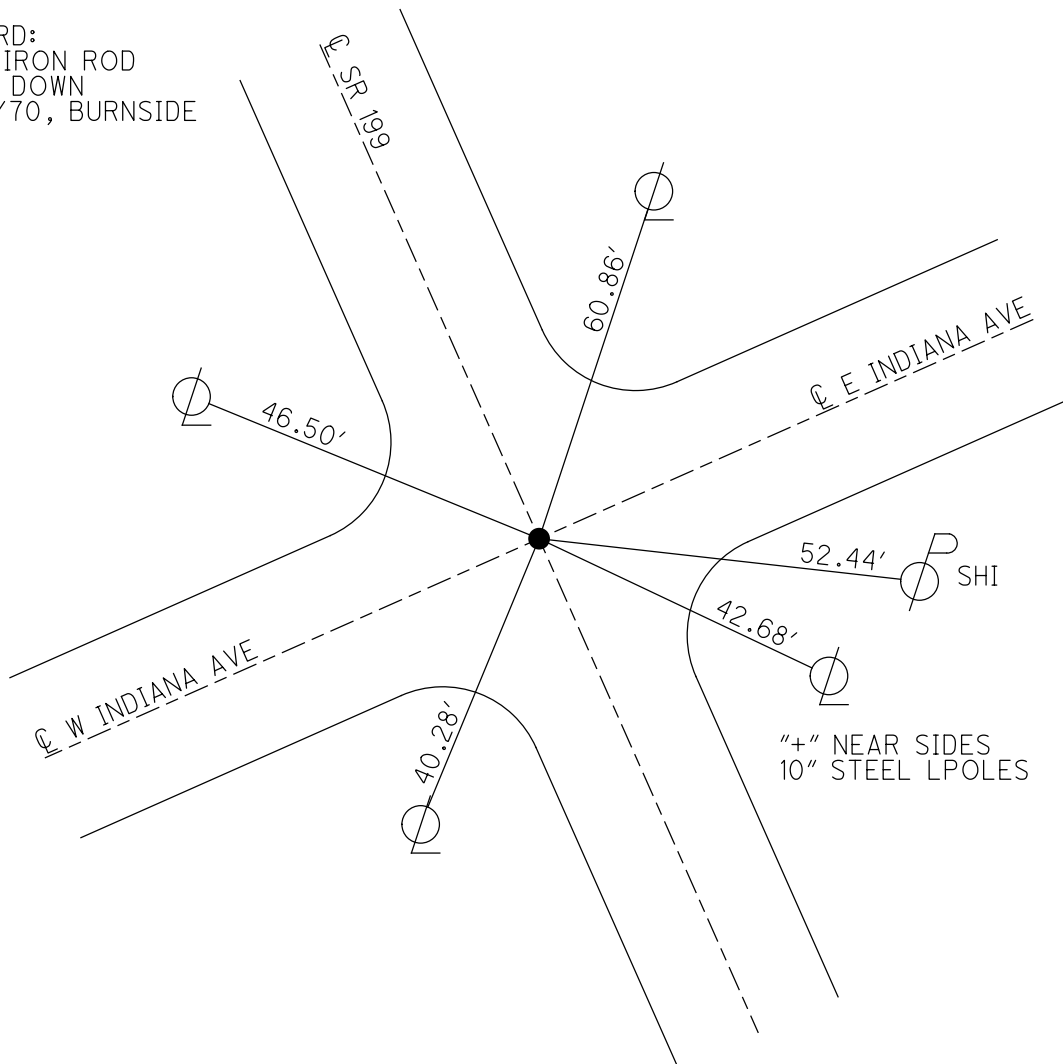
GEOID: \_\_\_\_\_

GRID: NORTHING: \_\_\_\_\_

EASTING: \_\_\_\_\_



RECORD:  
FD 1" IRON ROD  
0.30' DOWN  
2/26/70, BURNSIDE



PERSONNEL	TITLE	PERSONNEL	TITLE	COUNTY	DATE
BURNSIDE				WOOD	2-26-70
SMITH				S. R. 199	WEATHER CLEAR
HOFFMAN				SEC. PERRY'S BURG. CORP.	TEMP. +18°
DESCRIPTION CONTROL TIES (LOUISIANA AVE)				JOB NO.	
LEFT		CENTER LINE		RIGHT	

