

O.D.O.T. DISTRICT 2 SURVEY OFFICE (USE ONLY)

PERSONNEL

REFERENCE NO. 2 A

SHEET 3 OF 8

NOTES AUBLE

DATE 5-23-23

ROUTE SR 235

H.C. NIESE

WEATHER CLEAR

COUNTY WOOD

R.C. AUBLE

TEMP. 69° F

TOWNSHIP JACKSON

DWG BY AUBLE

PID PAVETRAIN

SECTION 35

T 3 N R 9 E

TYPE MONUMENT MAG/WASHER

ON SURFACE - ~~BELOW~~ ON

OFFSET \varnothing PAVEMENT 2.3' LT : ~~RT~~

7.6' TO LT EDGE PAVEMENT

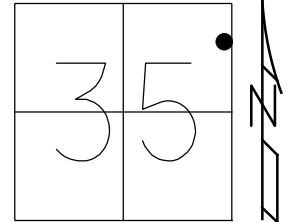
STATION: 49+67.08

HORZ.DATUM: NAD83(2011)

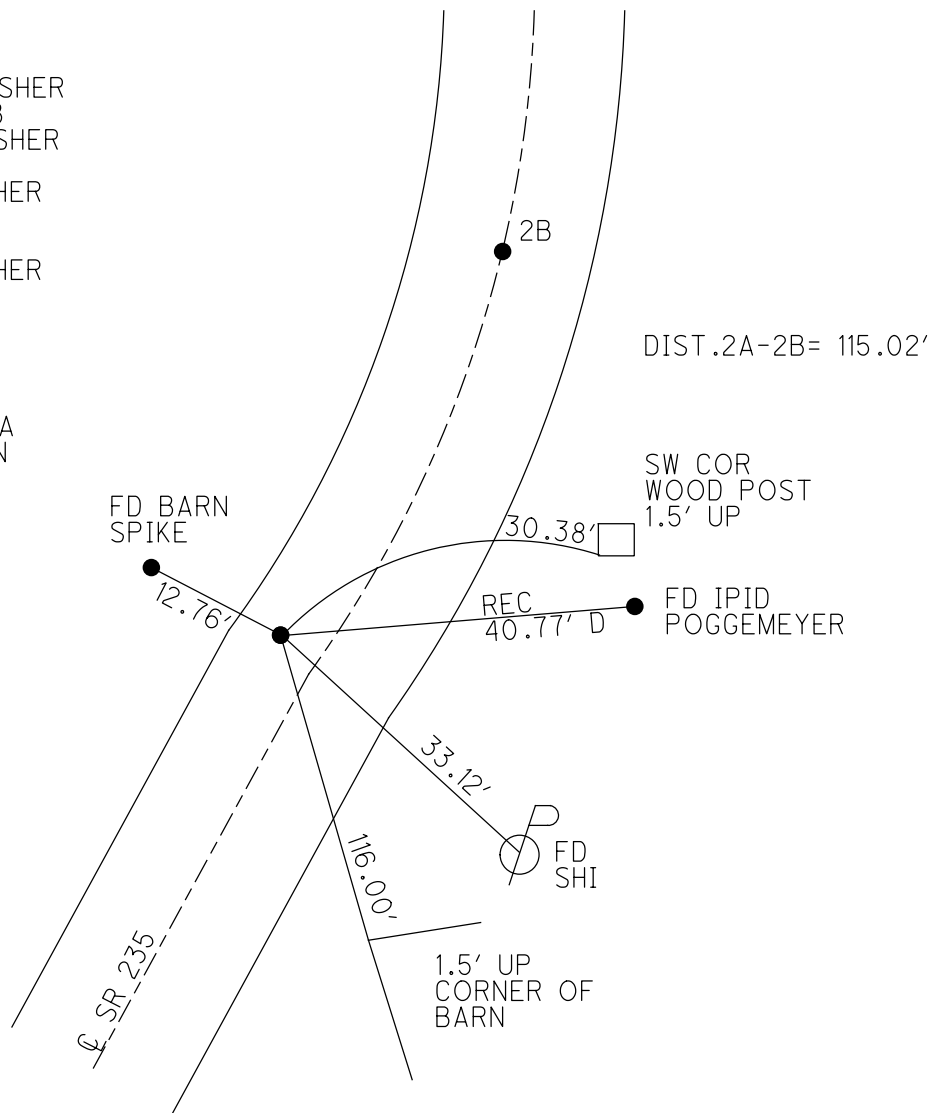
GEOID: NAVD88 2018

GRID: NORTHING: 554530.446

EASTING: 1614919.811



RECORD:
 SET P.K./WASHER
 10-27-93, MB
 SET MAG/WASHER
 8-3-04 M.C.
 FD MAG/WASHER
 REFA2
 6-8-18, JLL
 FD MAG/WASHER
 REFA2
 4-27-21
 9-16-21, JFO
 1/11/23, JMR
 2/1/23, JAM
 5/23/23, DSA
 8/14/23, TDN



O.D.O.T. DISTRICT 2 SURVEY OFFICE (USE ONLY)

PERSONNEL

REFERENCE NO. 2 A

SHEET 3 OF 8

NOTES RHOADES

DATE 4-27-21

ROUTE SR 235

H.C. O'DONNELL

WEATHER WINDY

COUNTY WOOD

R.C. RHOADES

TEMP. 64° F

TOWNSHIP JACKSON

SECTION 35

DWG BY AUBLE

PID PAVETRAIN

T 3 N R 9 E

TYPE MONUMENT MAG/WASHER

~~ON SURFACE~~ - BELOW ON

OFFSET Q PAVEMENT 2.3' LT : ~~RT~~

7.6' TO LT EDGE PAVEMENT

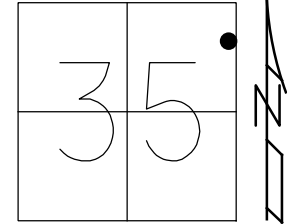
STATION: 49+67.08

HORIZ.DATUM: NAD83(2011)

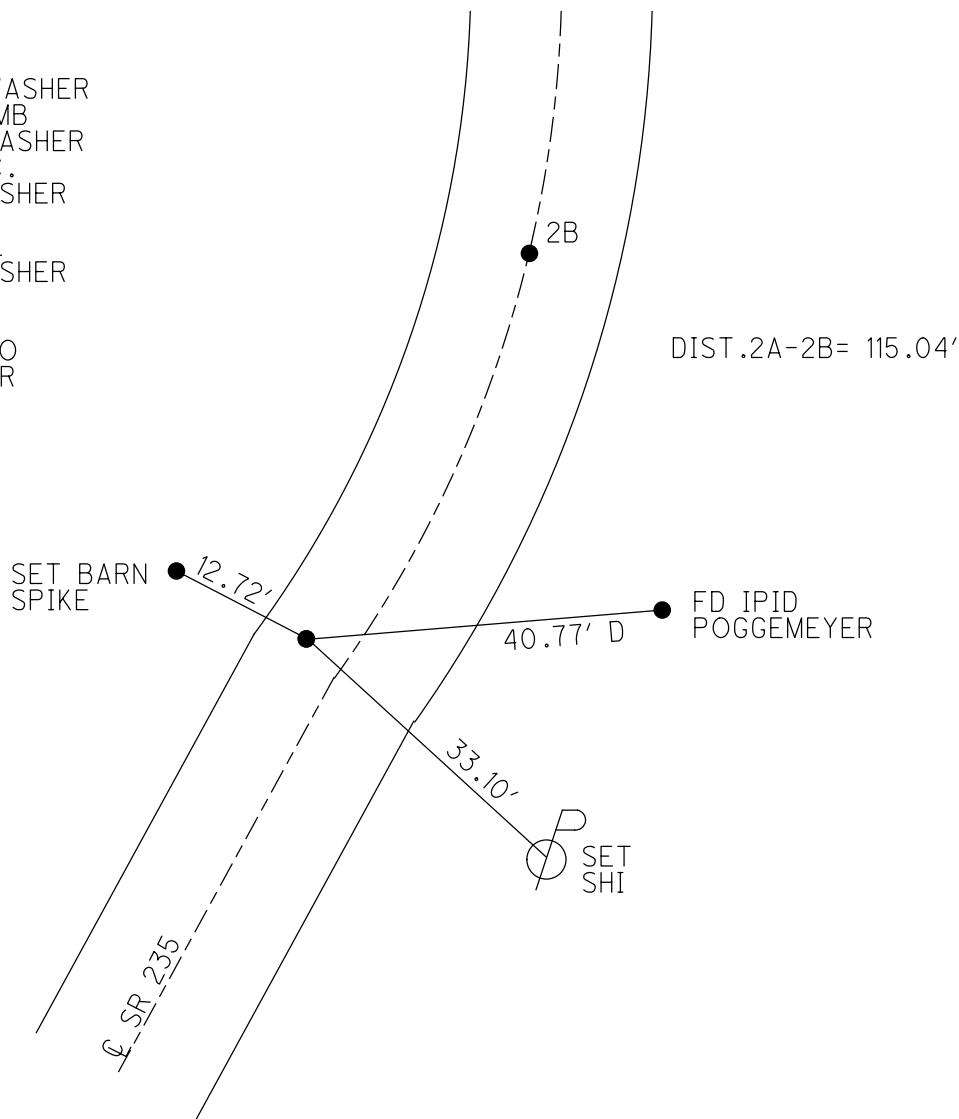
GEOID: NAVD88 2018

GRID: NORTHING: 554530.401

EASTING: 1614919.807



RECORD:
 SET P.K./WASHER
 10-27-93, MB
 SET MAG/WASHER
 8-3-04 M.C.
 FD MAG/WASHER
 REFA2
 6-8-18, JLL
 FD MAG/WASHER
 REFA2
 4-27-21
 9-16-21, JFO
 1/11/23, JMR



O.D.O.T. DISTRICT 2 SURVEY OFFICE (USE ONLY)

PERSONNEL

REFERENCE NO. 2 A

SHEET 3 OF 8

NOTES RHOADES

DATE 4-27-21

ROUTE SR 235

H.C. O'DONNELL

WEATHER WINDY

COUNTY WOOD

R.C. RHOADES

TEMP. 64° F

TOWNSHIP JACKSON

SECTION 35

DWG BY AUBLE

PID PAVETRAIN

T 3 N R 9 E

TYPE MONUMENT MAG/WASHER

~~ON SURFACE~~ - BELOW ON

OFFSET Q PAVEMENT 2.3' LT : ~~RT~~

7.6' TO LT EDGE PAVEMENT

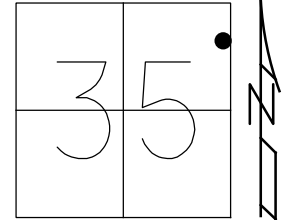
STATION: 49+67.08

HORZ.DATUM: NAD83(2011)

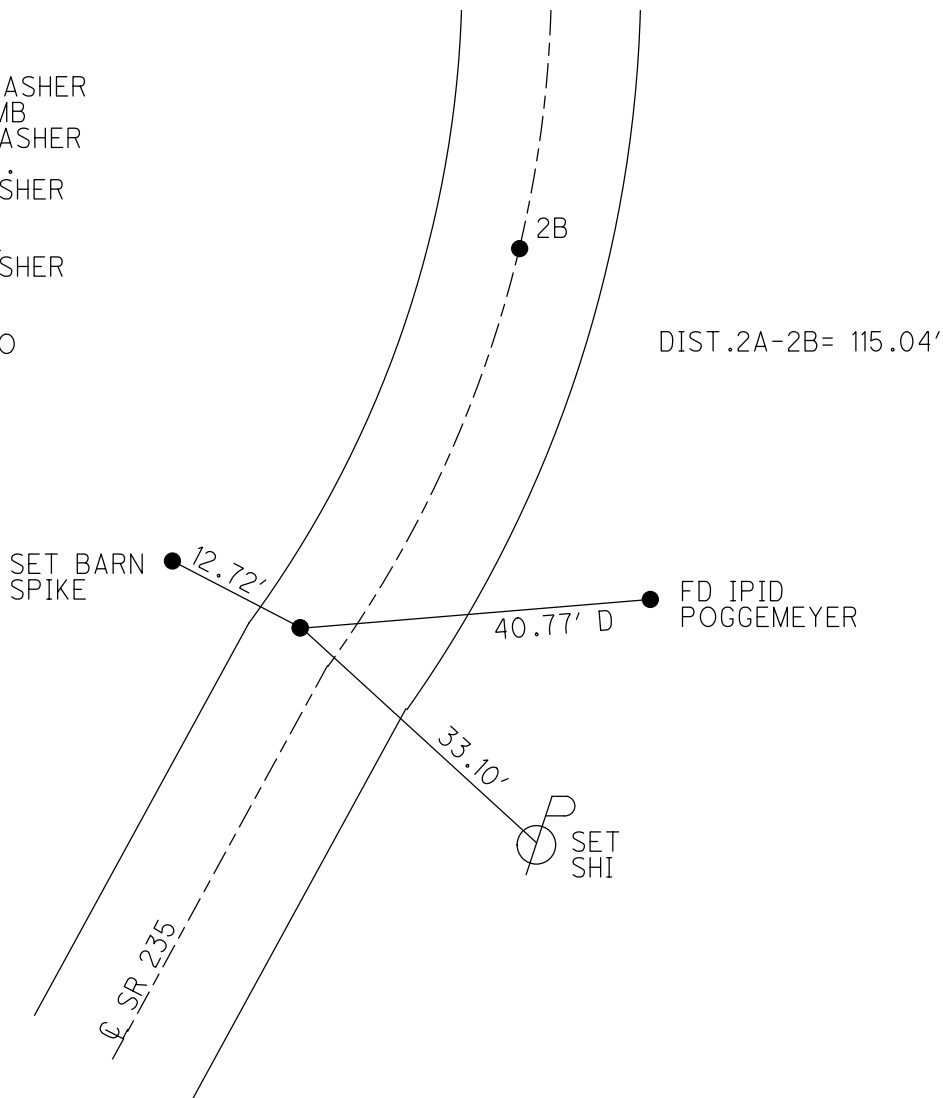
GEOID: NAVD88 2018

GRID: NORTHING: 554530.401

EASTING: 1614919.807



RECORD:
 SET P.K./WASHER
 10-27-93, MB
 SET MAG/WASHER
 8-3-04 M.C.
 FD MAG/WASHER
 REFA2
 6-8-18, JLL
 FD MAG/WASHER
 REFA2
 4-27-21
 9-16-21, JFO

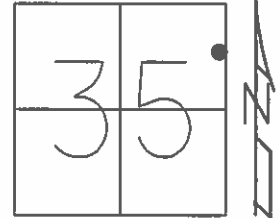


O.D.O.T. DISTRICT 2 SURVEY OFFICE (USE ONLY)

PERSONNEL _____ REFERENCE NO. 2 A SHEET 3 OF 8

NOTES NUHFER DATE 05-06-04 ROUTE SR 235
 H.C. CANERBURY WEATHER SUNNY COUNTY WOOD
 R.C. ARMS TEMP. 65°F TOWNSHIP JACKSON
 SECTION 35
 T 3 N R 9 E

TYPE MONUMENT MAG/WASHER
 ON SURFACE - ~~BELOW~~ ON _____
 LEFT - ☉ PAV'T - ~~RIGHT~~ 2.3'
7.6' TO LT EDGE PAVEMENT
 S.L.M. 49+67.08

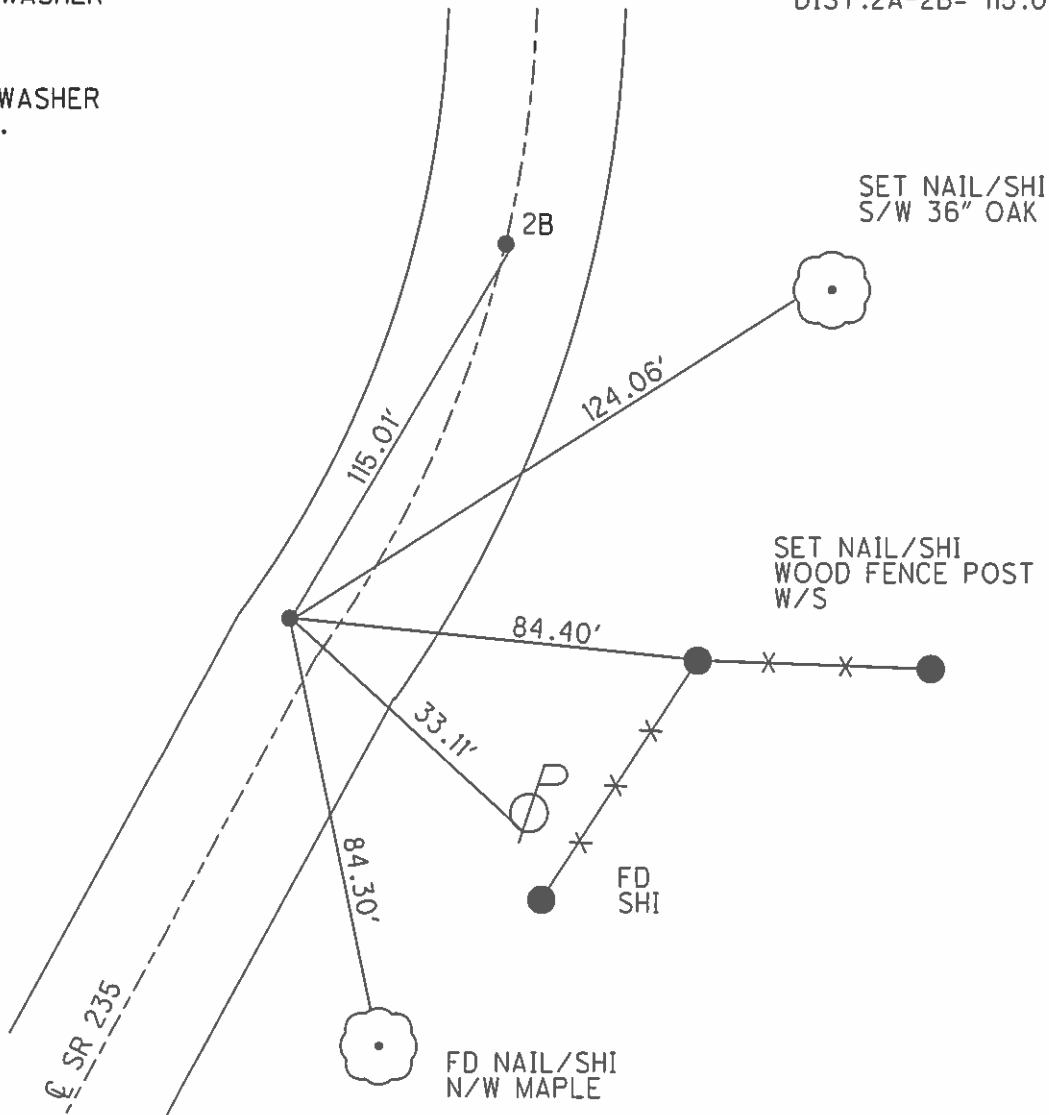


Grid: Northing: 554530.423 Easting: 1614919.879

RESET P.K. & WASHER
 10-27-93
 MB

DIST. 2A-2B= 115.01'

RESET MAG & WASHER
 08-03-04 M.C.



O.D.O.T. DISTRICT 2 SURVEY OFFICE

PERSONNEL

REFERENCE NO. 2-A

SHEET 3 OF 5

NOTES NUHFER

DATE 05-06-04

ROUTE S.R. 235

H.C. CANTERBURY

WEATHER SUN

COUNTY WOOD

R.C. ARMS

TEMP. +65°

TOWNSHIP JACKSON

SECTION 35

T 3 N R 9 E

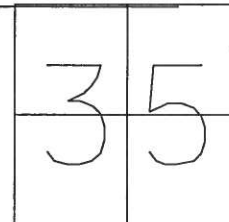
TYPE MONUMENT P.K. + WASHER

ON SURFACE YES

LEFT - Q PAV'T 2.3'

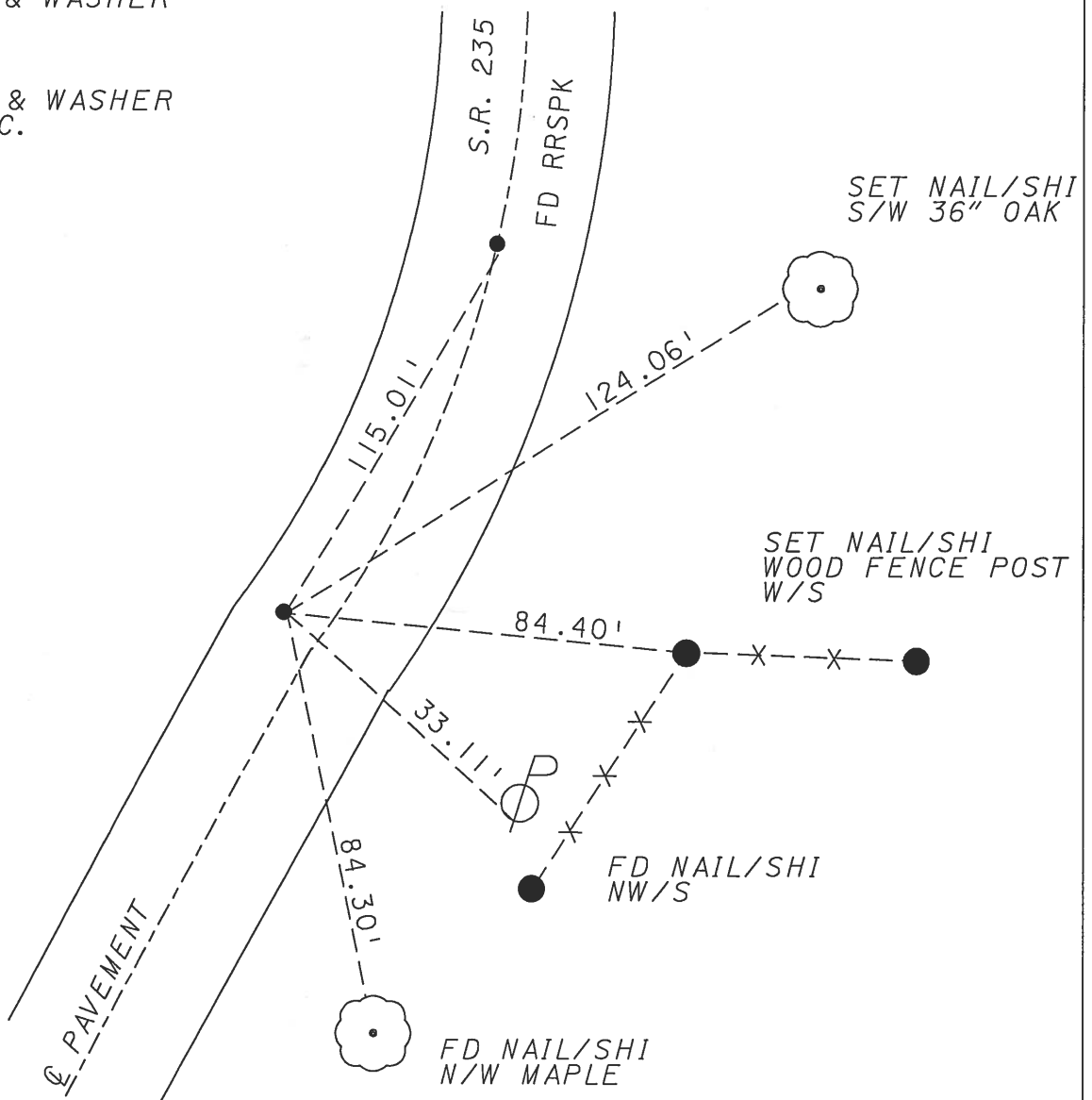
7.6' TO LT. EDGE PAVEMENT

S.L.M. 49+78



RESET P.K. & WASHER
10-27-93
MB

RESET MAG & WASHER
08-03-04 M.C.

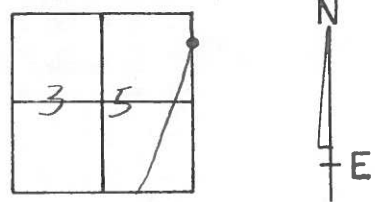


O.D.O.T. DISTRICT 2 SURVEY OFFICE

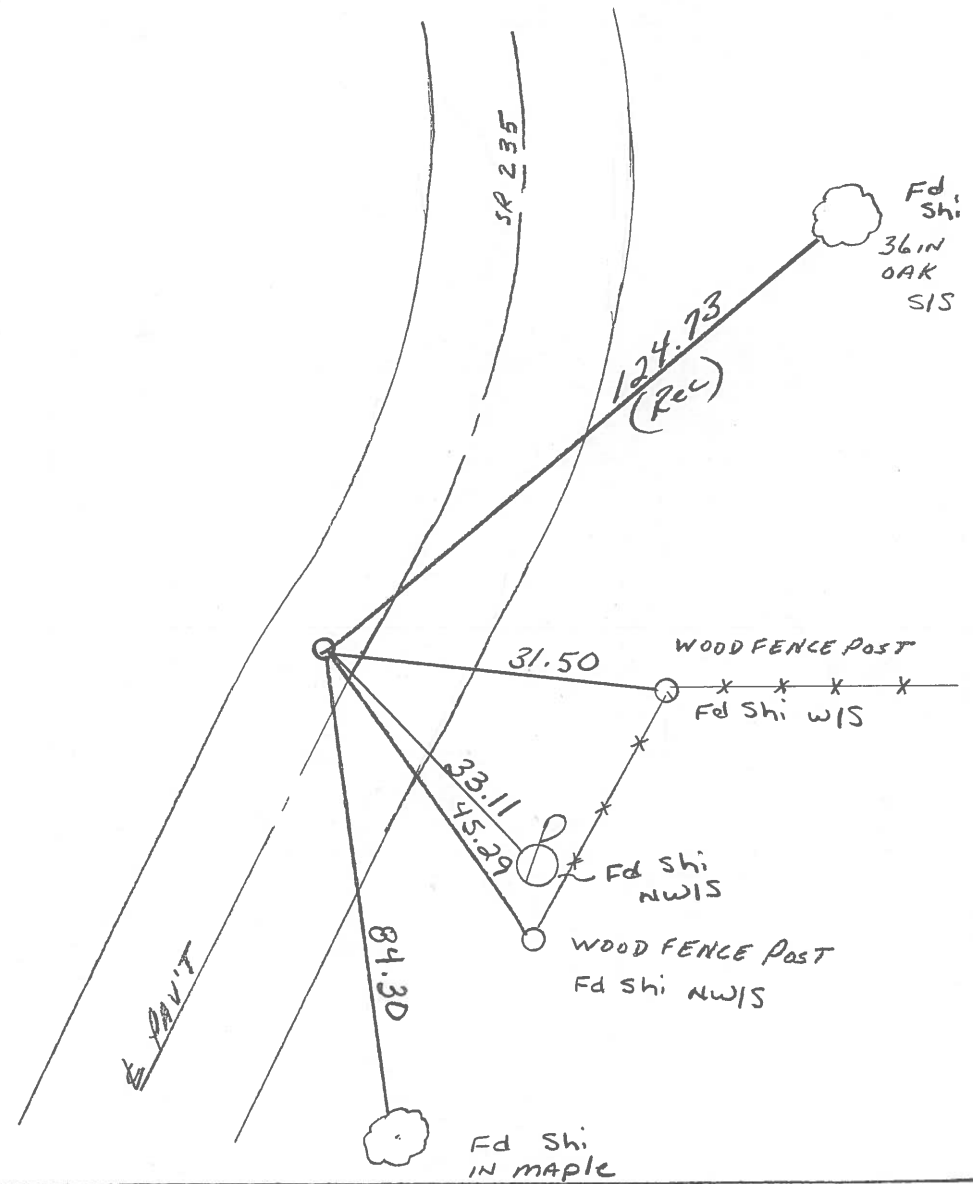
PERSONNEL _____ REFERENCE NO. 2-A SHEET 2 OF 3

NOTES OTTO
 H.C. Kusz DATE 7-21-93 ROUTE SR 235
 R.C. BARNHISEL WEATHER cloudy COUNTY WOOD
 _____ TEMP. +72° TOWNSHIP JACKSON
 _____ SECTION 35
T3 N R 9 E

TYPE MONUMENT P.K. & WASHER
 ON SURFACE - ~~BELOW~~ yes
 LEFT-C PAV'T. - ~~RIGHT~~ 2.3
3.4 TO LT EDGE PAVEMENT
 S.L.M. 49+78



*Reset PK & WASHER
 10-27-93
 MB*



O.D.O.T. DISTRICT 2 SURVEY OFFICE

PERSONNEL _____

REFERENCE NO. 2A SHEET _____ OF _____

NOTES LOEHRKE

H.C. BARNHISEL

R.C. HOFFMAN

DATE 7-2-85

WEATHER CLOUDY

TEMP. +72

ROUTE 235

COUNTY WOOD

TOWNSHIP JACKSON

SECTION _____

T3 N R 9 E

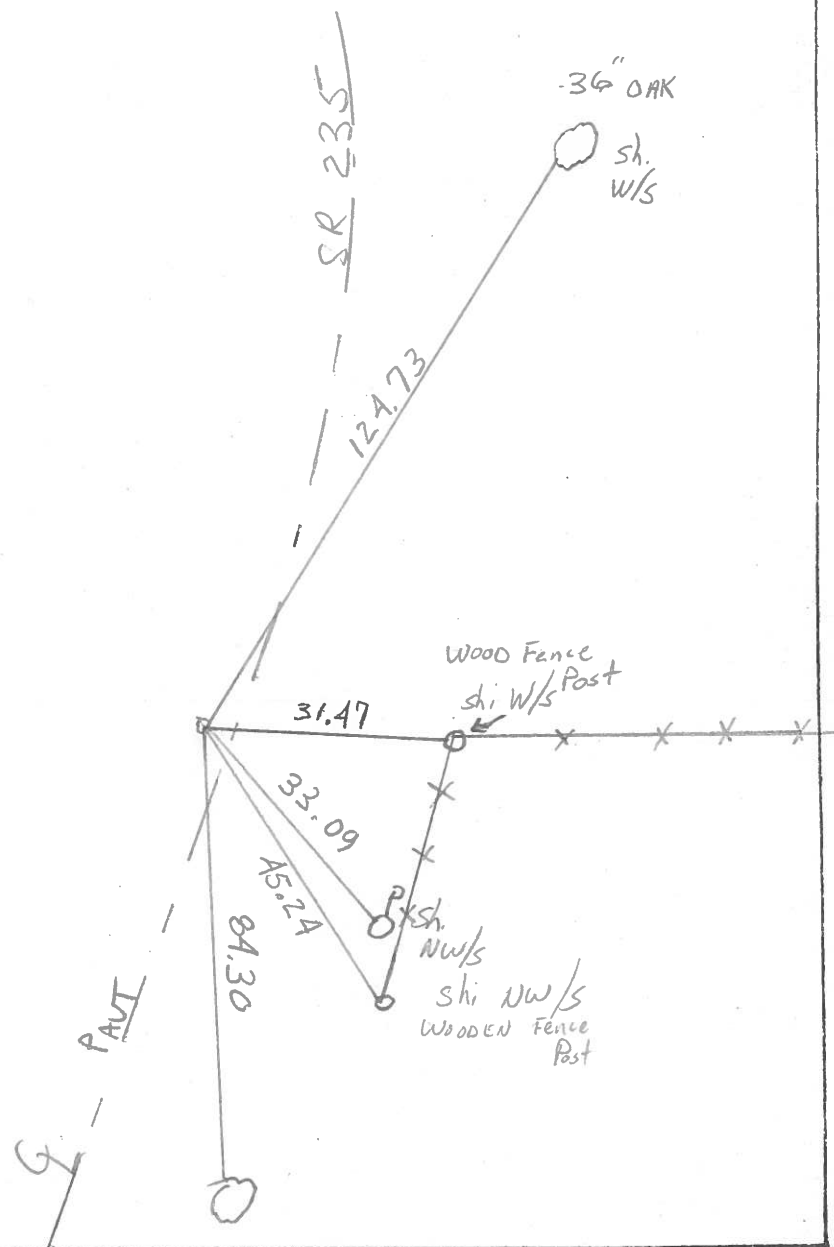
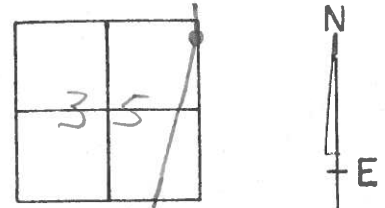
TYPE MONUMENT R.R. SPIKE Set P.K./WASHER
7-25-85 ch

~~ON SURFACE~~ - BELOW _____

LEFT - ~~C~~ PAV'T. - RIGHT Left 2.5

7.1 TO Lf EDGE PAVEMENT

S.L.M. 49+64



PERSONNEL TITLE PERSONNEL TITLE
BURNSIDE _____
SMITH _____
BOWERS _____
MEAD _____

COUNTY WOOD WEATHER CLOUDY
S. R. 235 TEMP. +36°
SEC. 35 JACKSON Twp.

DESCRIPTION CONTROL TIES JOB NO. _____

