

O.D.O.T. DISTRICT 2 SURVEY OFFICE (USE ONLY)

PERSONNEL

REFERENCE NO. 2 B

SHEET 4 OF 8

NOTES AUBLE

DATE 5-23-23

ROUTE SR 235

H.C. NIESE

WEATHER CLEAR

COUNTY WOOD

R.C. AUBLE

TEMP. 69° F

TOWNSHIP JACKSON

DWG BY AUBLE

PID PAVETRAIN

SECTION 35

T 3 N R 9 E

TYPE MONUMENT MAG/WASHER

ON SURFACE - ~~BELOW~~ ON

OFFSET ☉ PAVEMENT ON LT : RT

8.8' TO RT EDGE PAVEMENT

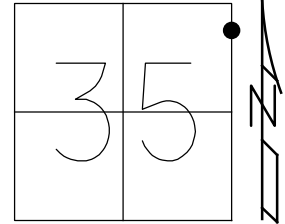
STATION: 50+82.98

HORZ. DATUM: NAD83(2011)

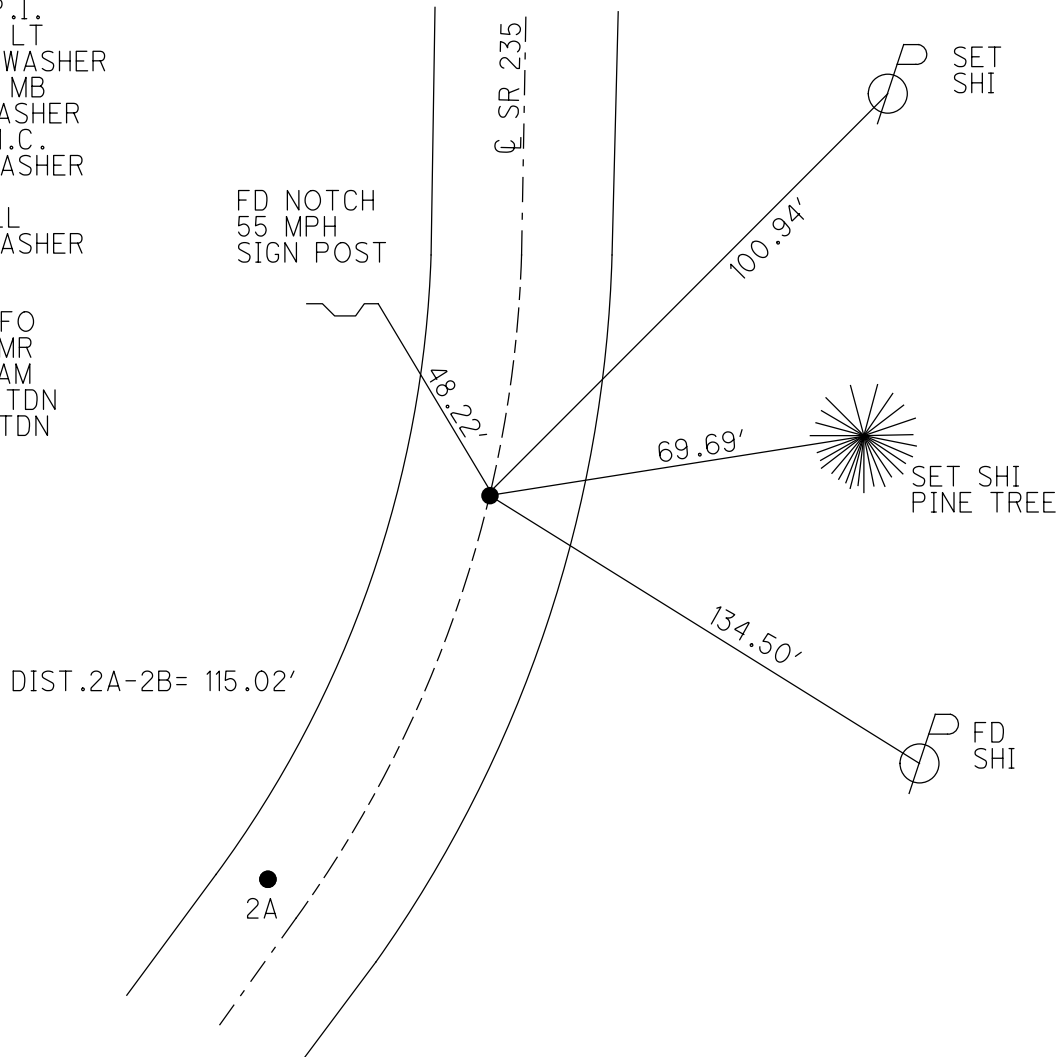
GEOID: NAVD88 2018

GRID: NORTHING: 554642.488

EASTING: 1614945.700



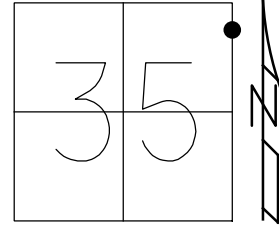
RECORD: P.I.  
 $\Delta = 6^\circ 43''$  LT  
 SET P.K./WASHER  
 10-27-93, MB  
 SET PK/WASHER  
 8-3-04, M.C.  
 FD MAG/WASHER  
 REFB2  
 6-8-21, JLL  
 FD MAG/WASHER  
 REFB2  
 4-27-21  
 9-16-21, JFO  
 1/11/23, JMR  
 2/1/23, JAM  
 5/23/23, TDN  
 8/14/23, TDN



O.D.O.T. DISTRICT 2 SURVEY OFFICE (USE ONLY)

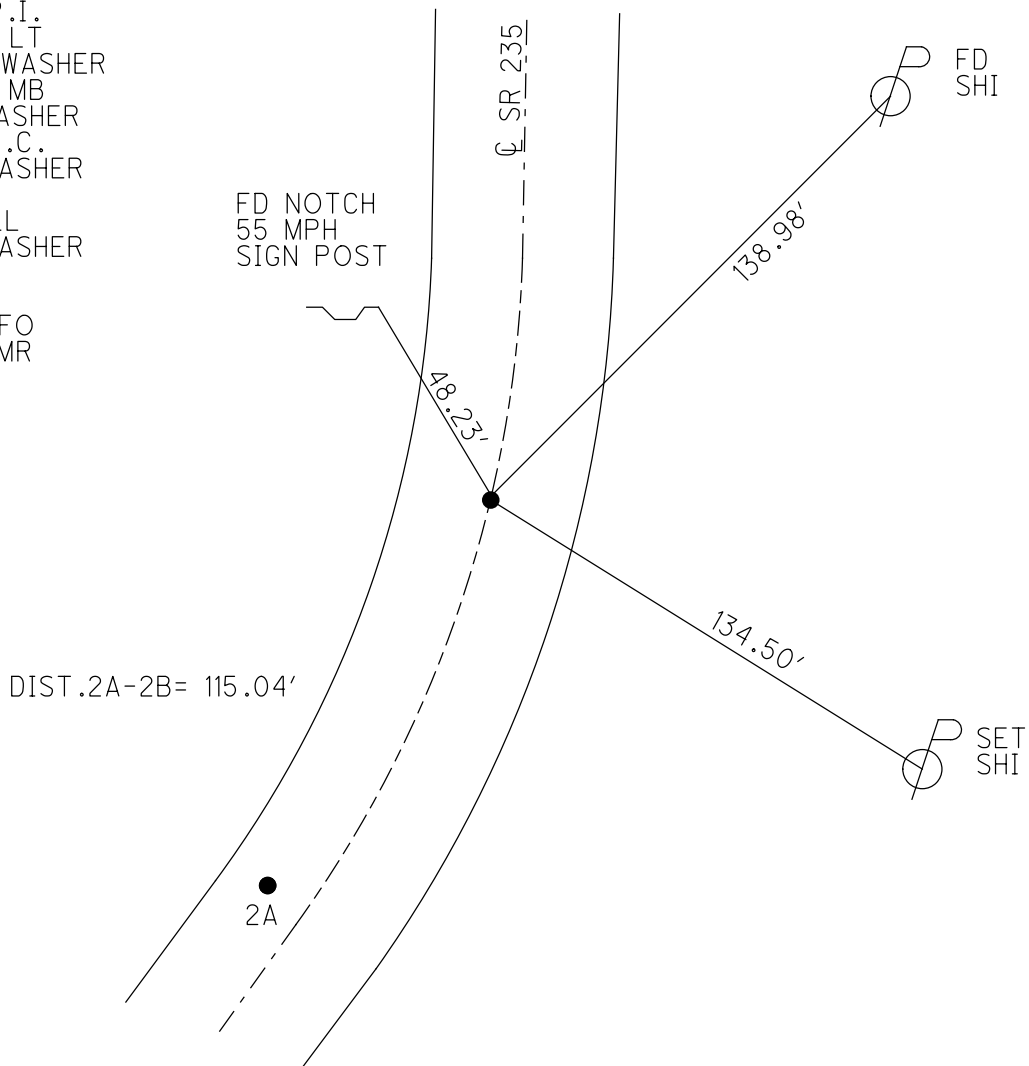
PERSONNEL \_\_\_\_\_ REFERENCE NO. 2 B SHEET 4 OF 8  
 NOTES RHOADES DATE 4-27-21 ROUTE SR 235  
 H.C. O'DONNELL WEATHER WINDY COUNTY WOOD  
 R.C. RHOADES TEMP. 64° F TOWNSHIP JACKSON  
 \_\_\_\_\_ SECTION 35  
 DWG BY AUBLE PID PAVETRAIN T 3 N R 9 E

TYPE MONUMENT MAG/WASHER  
 ON SURFACE - ~~BELOW~~ ON  
 OFFSET 0 PAVEMENT ON LT : RT  
8.8' TO RT EDGE PAVEMENT  
 STATION: 50+82.98



HORIZ.DATUM: NAD83(2011) GEOID: NAVD88 2018  
 GRID: NORTHING: 554642.485 EASTING: 1614945.696

RECORD: P.I.  
 $\Delta = 6^\circ 43''$  LT  
 SET P.K./WASHER  
 10-27-93, MB  
 SET PK/WASHER  
 8-3-04, M.C.  
 FD MAG/WASHER  
 REFB2  
 6-8-21, JLL  
 FD MAG/WASHER  
 REFB2  
 4-27-21  
 9-16-21, JFO  
 1/11/23, JMR



O.D.O.T. DISTRICT 2 SURVEY OFFICE (USE ONLY)

PERSONNEL

REFERENCE NO. 2 B

SHEET 4 OF 8

NOTES RHOADES

DATE 4-27-21

ROUTE SR 235

H.C. O'DONNELL

WEATHER WINDY

COUNTY WOOD

R.C. RHOADES

TEMP. 64° F

TOWNSHIP JACKSON

SECTION 35

DWG BY AUBLE

PID PAVETRAIN

T 3 N R 9 E

TYPE MONUMENT MAG/WASHER

ON SURFACE - ~~BELOW~~ ON

OFFSET Q PAVEMENT ON LT : RT

8.8' TO RT EDGE PAVEMENT

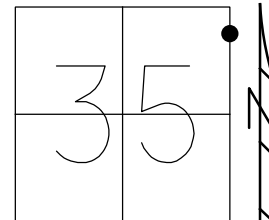
STATION: 50+82.98

HORZ.DATUM: NAD83(2011)

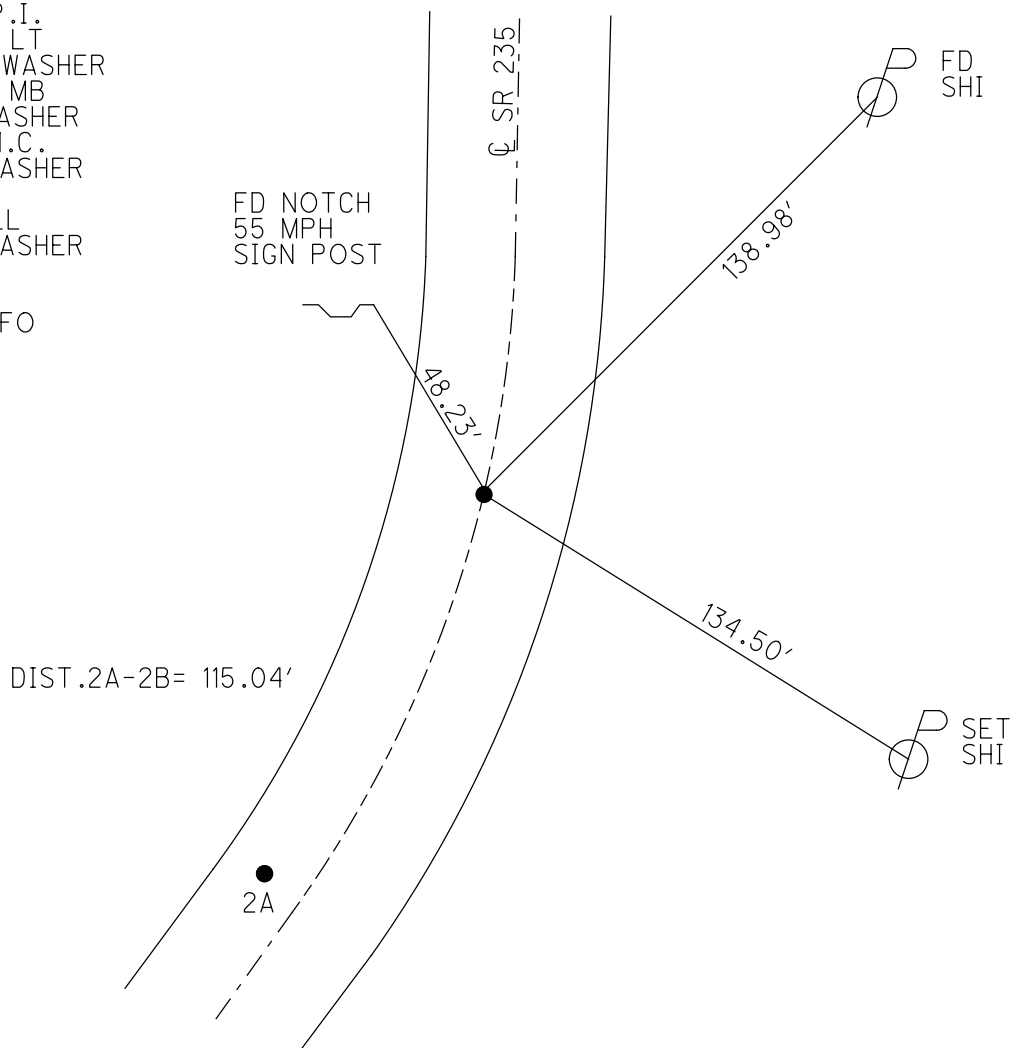
GEOID: NAVD88 2018

GRID: NORTHING: 554642.485

EASTING: 1614945.696



RECORD: P.I.  
 $\Delta = 6^\circ 43''$  LT  
 SET P.K./WASHER  
 10-27-93, MB  
 SET PK/WASHER  
 8-3-04, M.C.  
 FD MAG/WASHER  
 REFB2  
 6-8-21, JLL  
 FD MAG/WASHER  
 REFB2  
 4-27-21  
 9-16-21, JFO

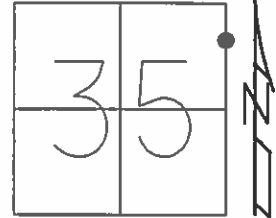


**O.D.O.T. DISTRICT 2 SURVEY OFFICE (USE ONLY)**

PERSONNEL \_\_\_\_\_ REFERENCE NO. 2 B SHEET 4 OF 8

NOTES NUHFER DATE 05-06-04 ROUTE SR 235  
 H.C. CANERBURY WEATHER SUNNY COUNTY WOOD  
 R.C. ARMS TEMP. 65°F TOWNSHIP JACKSON  
 SECTION 35  
T 3 N R 9 E

TYPE MONUMENT RR SPIKE  
 ON SURFACE - ~~BELOW~~ 2"  
 LEFT - ℄ PAV'T - RIGHT ON  
8.8' TO RT EDGE PAVEMENT  
 S.L.M. 50+93  
 Grid: Northing: - Easting: -



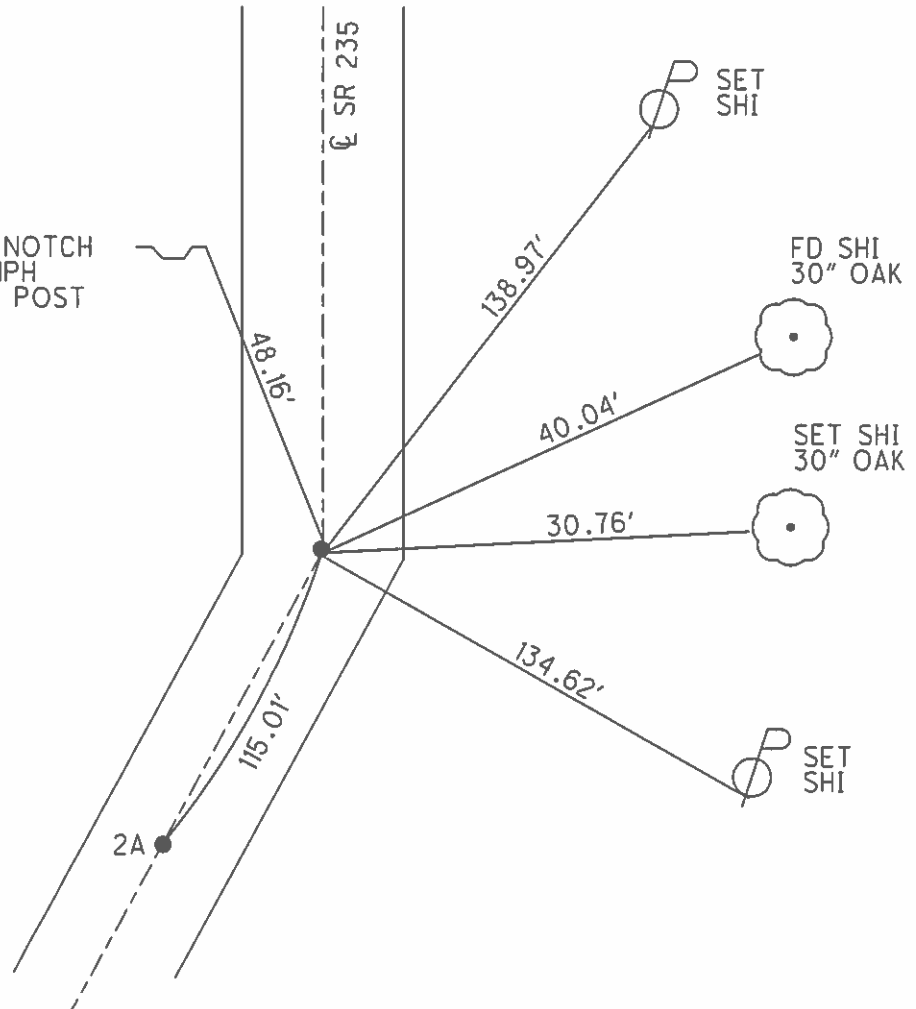
RECORD:  
 DELTA=6°-43' LT.

DIST. 2A-2B= 115.01'

SET PK/WASHER  
 10-27-93, MB

SET PK/WASHER  
 08-03-04, M.C.

CUT NOTCH  
 55 MPH  
 SIGN POST



2A

O.D.O.T. DISTRICT 2 SURVEY OFFICE

PERSONNEL

REFERENCE NO. 2-B

SHEET 4 OF 5

NOTES NUHFER

DATE 05-06-04

ROUTE S.R. 235

H.C. CANTERBURY

WEATHER SUN

COUNTY WOOD

R.C. ARMS

TEMP. +65°

TOWNSHIP JACKSON

SECTION 35

T 3 N R 9 E

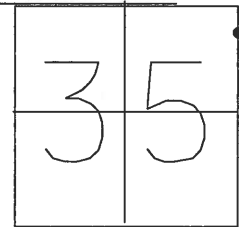
TYPE MONUMENT RR SPIKE

ON SURFACE 2" DOWN

~~LEFT~~ - Q PAV'T ON

8.8' TO RT. EDGE PAVEMENT

S.L.M. 50+93

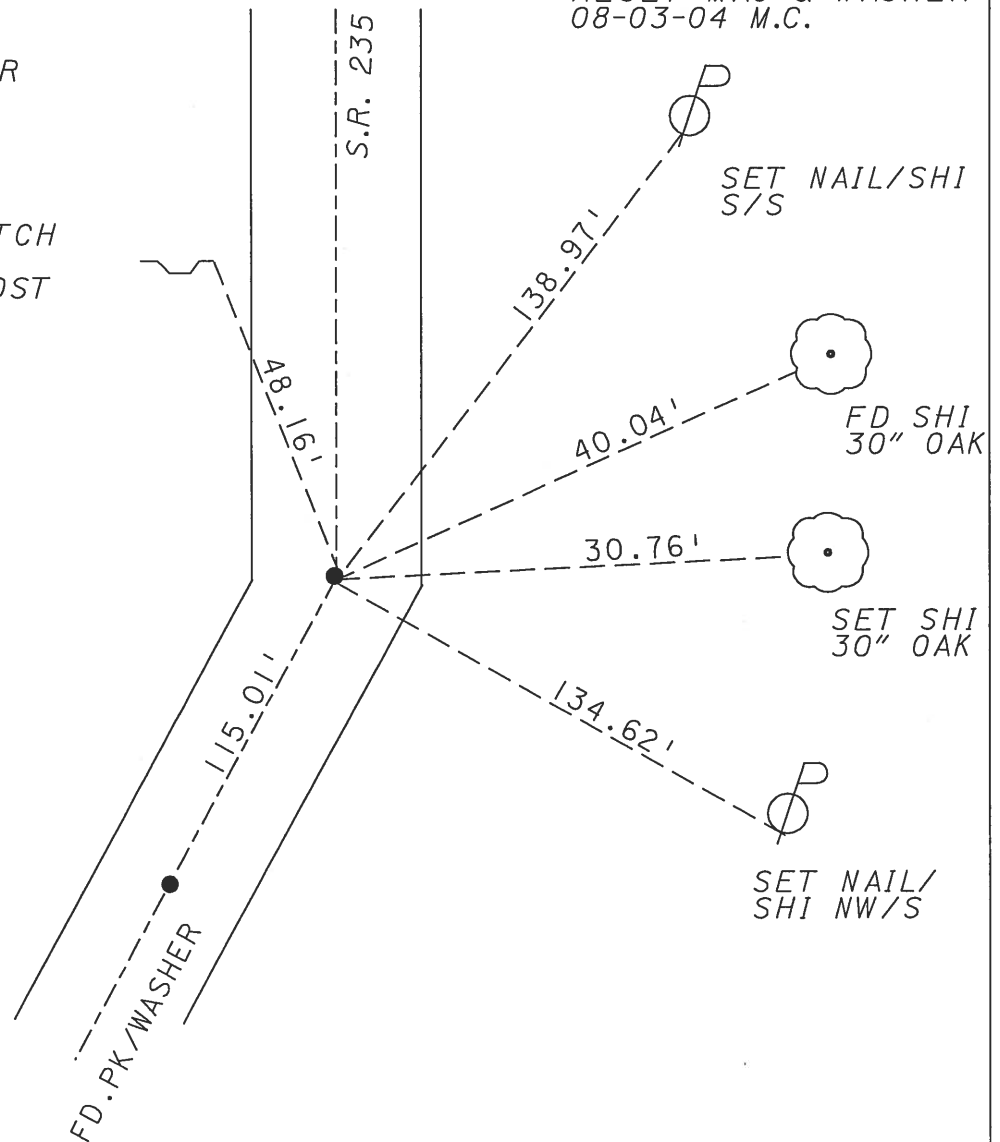


RECORD:  
DELTA=6°-43' LT.

RESET MAG & WASHER  
08-03-04 M.C.

RESET P.K. & WASHER  
10-27-93  
MB

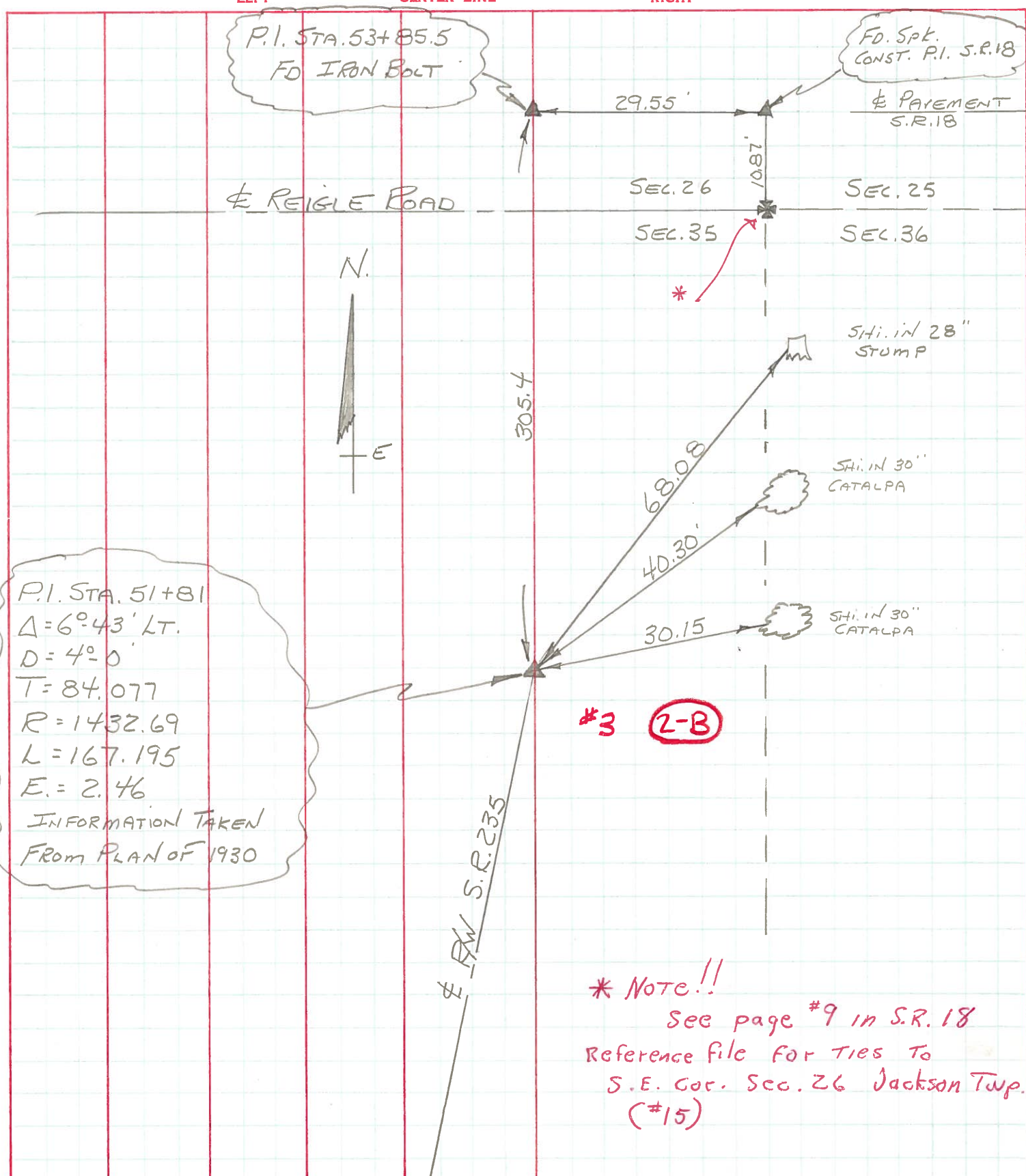
CUT NOTCH  
55 MPH  
SIGN POST



PERSONNEL TITLE PERSONNEL TITLE  
BURNSIDE \_\_\_\_\_  
SMITH \_\_\_\_\_  
BOWERS \_\_\_\_\_

COUNTY Wood DATE 5-1-72  
 S. R. 235 WEATHER SHOWERS  
 SEC. 35 TEMP. +62°

DESCRIPTION \_\_\_\_\_ LEFT \_\_\_\_\_ CENTER LINE \_\_\_\_\_ RIGHT \_\_\_\_\_ JOB NO. \_\_\_\_\_

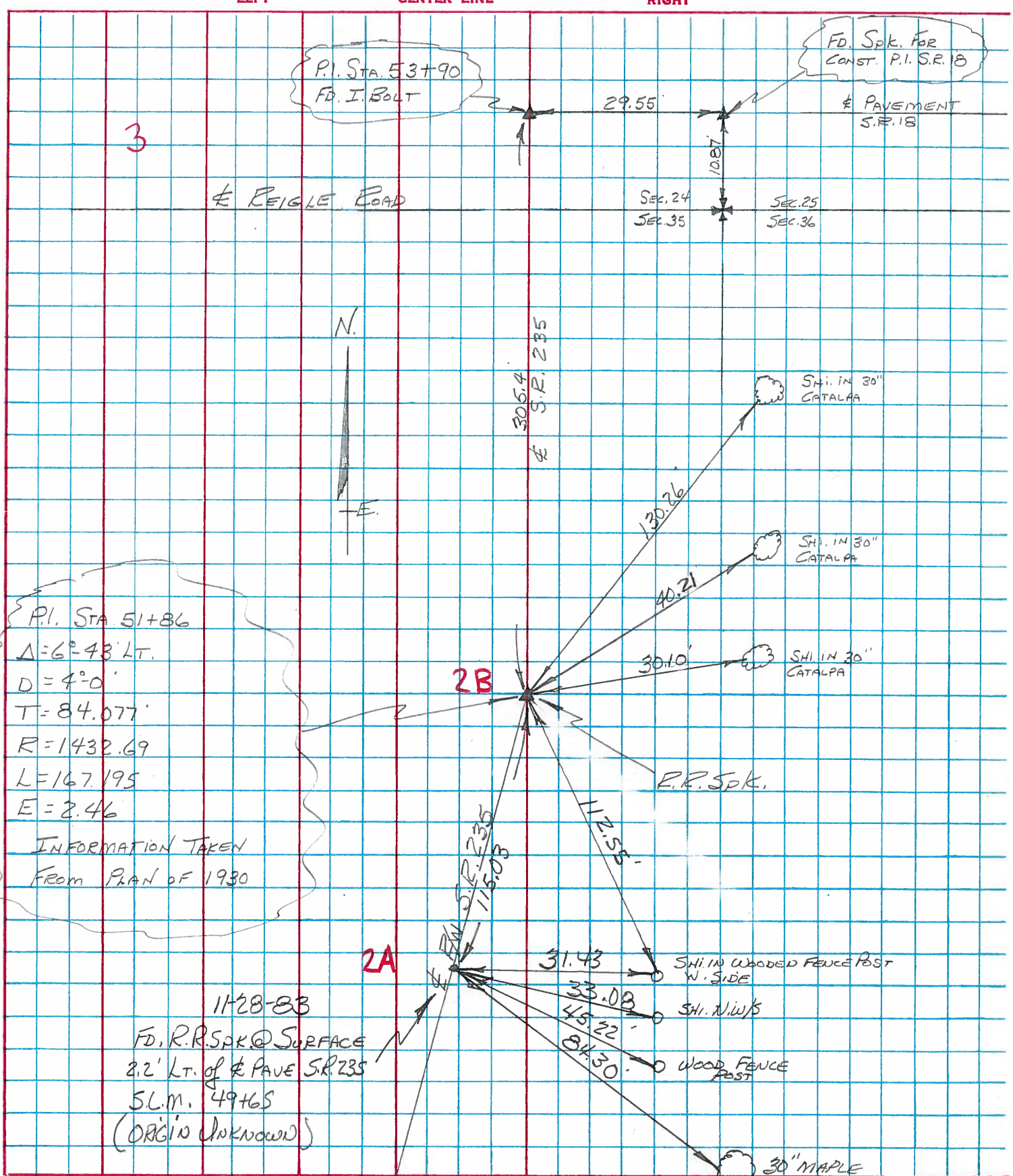


\* NOTE!!  
 See page #9 in S.R. 18  
 Reference file for TIES TO  
 S.E. Cor. Sec. 26 Jackson Twp.  
 (#15)

PERSONNEL	TITLE	PERSONNEL	TITLE
BURNSIDE			
SMITH			
BOWERS			
MEAD			

COUNTY WOOD WEATHER CLOUDY  
 S. R. 235 TEMP. +36°  
 SEC. 35 JACKSON TWP.

DESCRIPTION CONTROL TIES JOB NO. \_\_\_\_\_



3

P.I. STA. 53+90  
FD. I. BOLT

FD. SPK. FOR  
CONST. P.I. S.R. 18

PAVEMENT  
S.R. 18

REIGLE ROAD

SEC. 24  
SEC. 35

SEC. 25  
SEC. 36



306.4  
S.R. 235

SHI. IN 30"  
CATALPA

SHI. IN 30"  
CATALPA

SHI. IN 30"  
CATALPA

2B

R.R. SPK.

P.I. STA 51+86

$\Delta = 6^{\circ} 43' \text{ LT.}$

$D = 4^{\circ} 0'$

$T = 84.077'$

$R = 1432.69$

$L = 167.195$

$E = 2.46$

INFORMATION TAKEN  
FROM PLAN OF 1930

2A

11-28-83

FD. R.R. SPK. @ SURFACE  
2.2' LT. OF PAVE S.R. 235  
S.L.M. 49465  
(ORIGIN UNKNOWN)

SHI. IN WOODEN FENCE POST  
W. SIDE

SHI. N.W. 1/4

WOOD FENCE  
POST

30" MAPLE