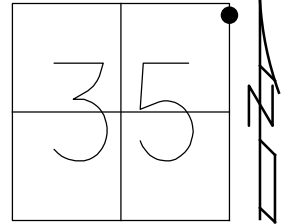


O.D.O.T. DISTRICT 2 SURVEY OFFICE (USE ONLY)

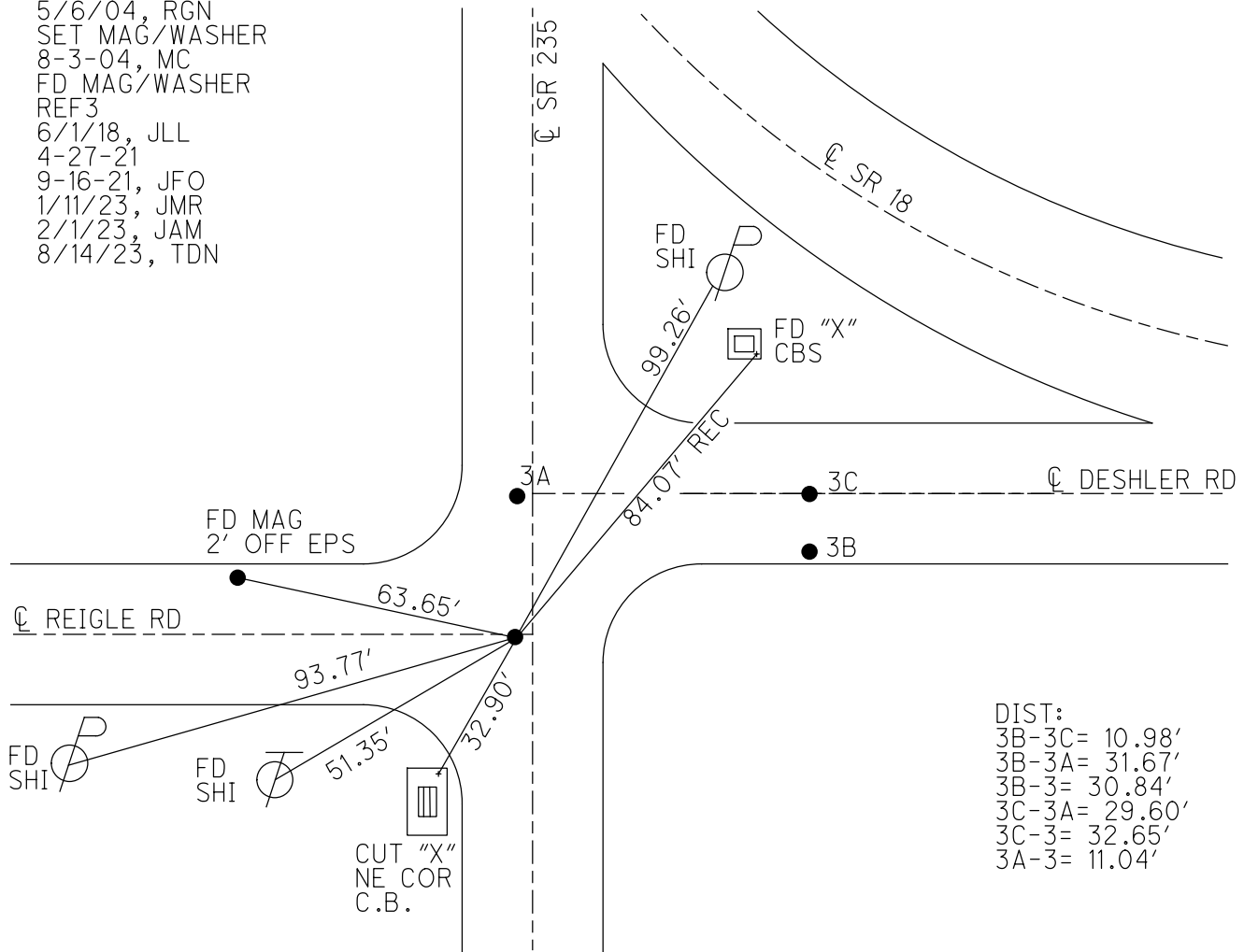
PERSONNEL _____ REFERENCE NO. 3 SHEET 5 OF 8
 NOTES AUBLE DATE 5-23-23 ROUTE SR 235
 H.C. NIESE WEATHER CALM COUNTY WOOD
 R.C. AUBLE TEMP. 74° F TOWNSHIP JACKSON
 _____ SECTION 25
 DWG BY AUBLE PID PAVETRAIN T 3 N R 9 E

TYPE MONUMENT MAG/WASHER
 ON SURFACE - ~~BELOW~~ ON
 OFFSET \odot PAVEMENT 2.5' LT : RT
- TO - EDGE PAVEMENT
 STATION: 53+76.82



HORIZ.DATUM: NAD83(2011) GEOID: NAVD88 2018
 GRID: NORTHING: 554935.199 EASTING: 1614977.520

RECORD:
 FD P.K./WASHER
 FD MAG/WASHER
 5/6/04, RGN
 SET MAG/WASHER
 8-3-04, MC
 FD MAG/WASHER
 REF3
 6/1/18, JLL
 4-27-21
 9-16-21, JFO
 1/11/23, JMR
 2/1/23, JAM
 8/14/23, TDN

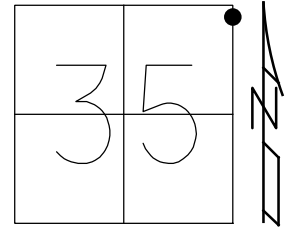


DIST:
 3B-3C= 10.98'
 3B-3A= 31.67'
 3B-3= 30.84'
 3C-3A= 29.60'
 3C-3= 32.65'
 3A-3= 11.04'

O.D.O.T. DISTRICT 2 SURVEY OFFICE (USE ONLY)

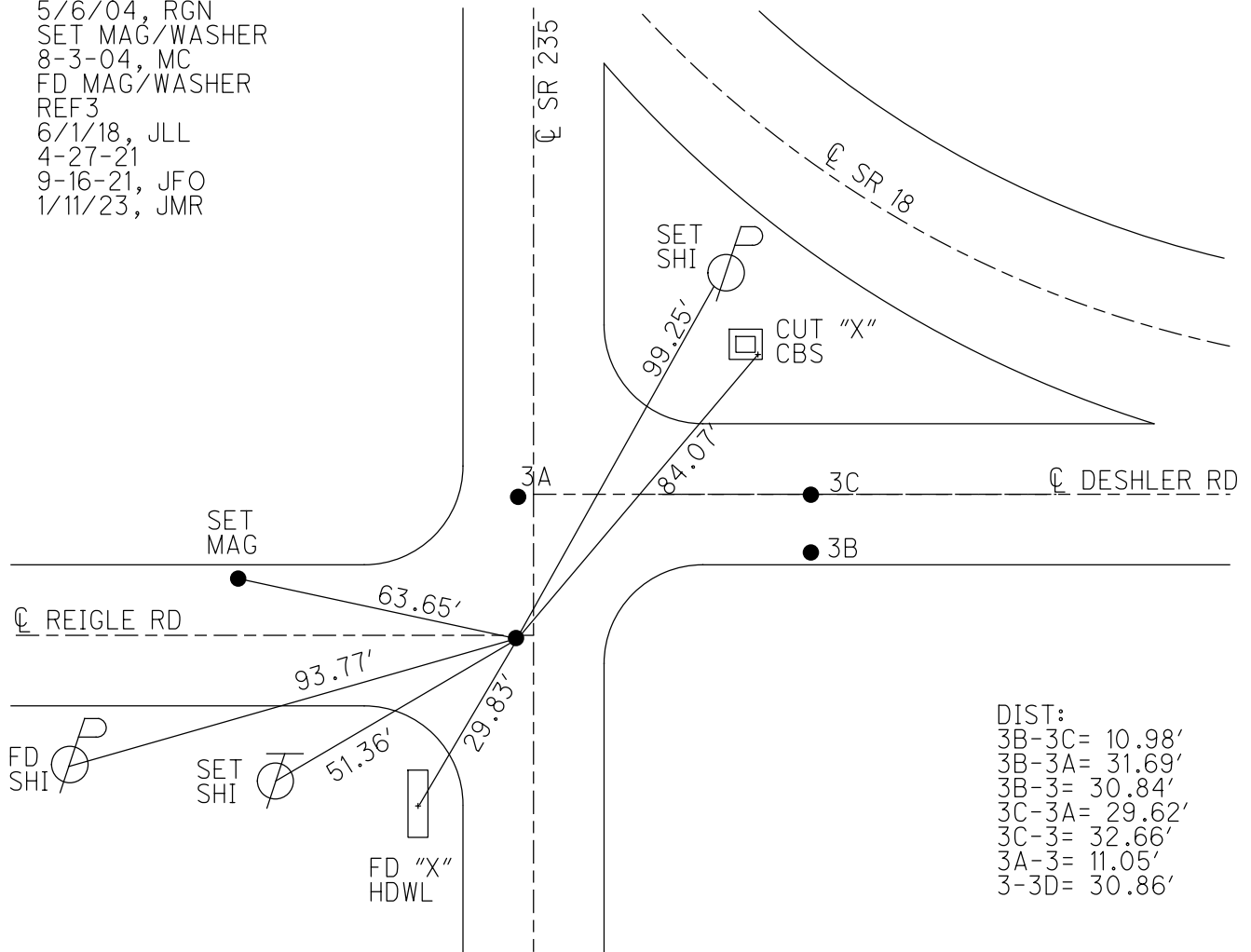
PERSONNEL _____ REFERENCE NO. 3 SHEET 5 OF 8
 NOTES RHOADES DATE 4-27-21 ROUTE SR 235
 H.C. O'DONNELL WEATHER WINDY COUNTY WOOD
 R.C. RHOADES TEMP. 64° F TOWNSHIP JACKSON
 DWG BY AUBLE PID PAVETRAN SECTION 25
 T 3 N R 9 E

TYPE MONUMENT MAG/WASHER
 ON SURFACE - ~~BELOW~~ ON
 OFFSET \odot PAVEMENT 2.5' LT : ~~RT~~
- TO - EDGE PAVEMENT
 STATION: 53+76.82



HORZ.DATUM: NAD83(2011) GEOID: NAVD88 2018
 GRID: NORTHING: 554935.177 EASTING: 1614977.489

RECORD:
 FD P.K./WASHER
 FD MAG/WASHER
 5/6/04, RGN
 SET MAG/WASHER
 8-3-04, MC
 FD MAG/WASHER
 REF3
 6/1/18, JLL
 4-27-21
 9-16-21, JFO
 1/11/23, JMR

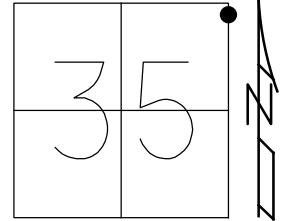


DIST:
 3B-3C= 10.98'
 3B-3A= 31.69'
 3B-3= 30.84'
 3C-3A= 29.62'
 3C-3= 32.66'
 3A-3= 11.05'
 3-3D= 30.86'

O.D.O.T. DISTRICT 2 SURVEY OFFICE (USE ONLY)

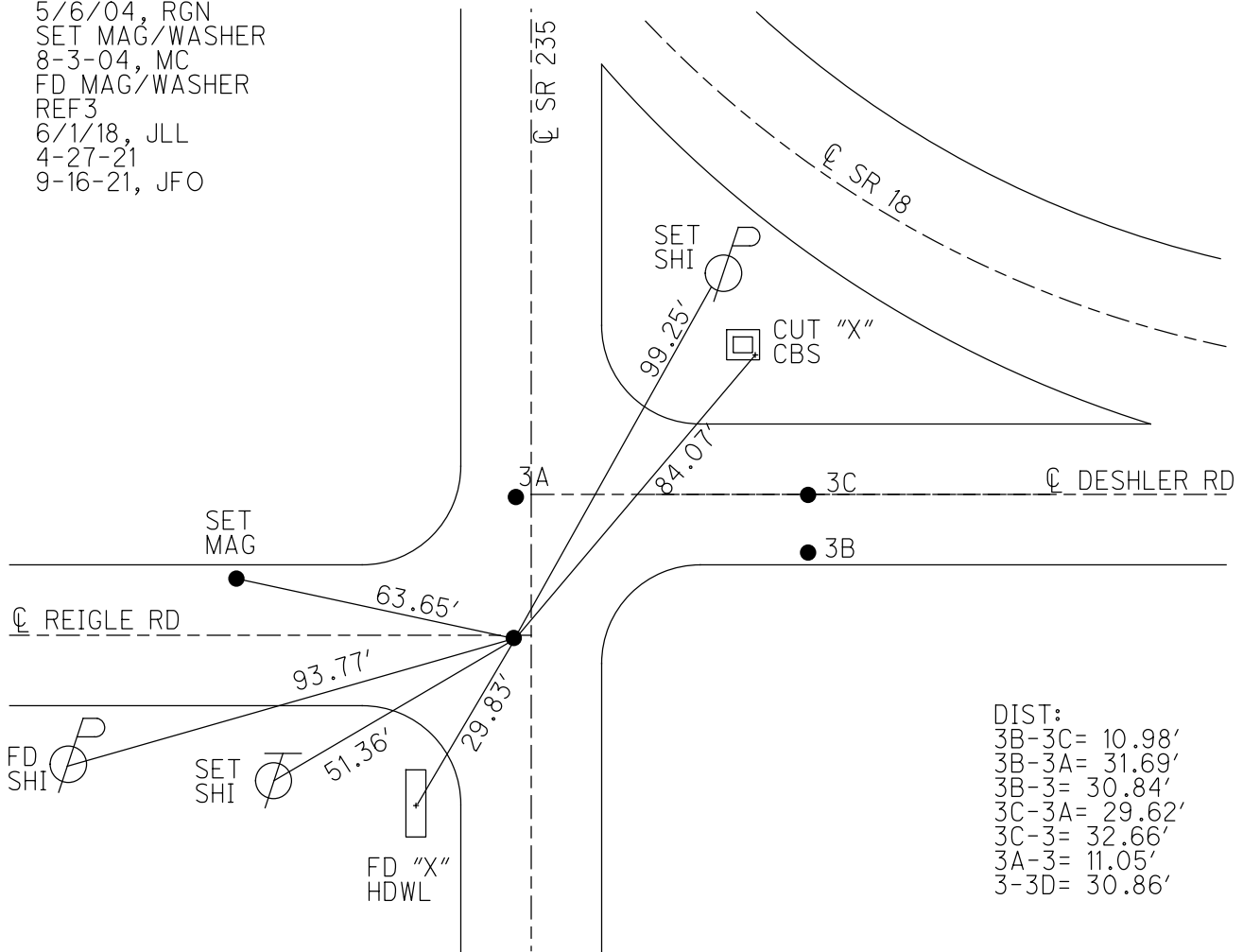
PERSONNEL _____ REFERENCE NO. 3 SHEET 5 OF 8
 NOTES RHOADES DATE 4-27-21 ROUTE SR 235
 H.C. O'DONNELL WEATHER WINDY COUNTY WOOD
 R.C. RHOADES TEMP. 64° F TOWNSHIP JACKSON
 SECTION 25
 DWG BY AUBLE PID PAVETRAIN T 3 N R 9 E

TYPE MONUMENT MAG/WASHER
 ON SURFACE - ~~BELOW~~ ON
 OFFSET ☉ PAVEMENT 2.5' LT : RT
- TO - EDGE PAVEMENT
 STATION: 53+76.82



HORIZ.DATUM: NAD83(2011) GEOID: NAVD88 2018
 GRID: NORTHING: 554935.177 EASTING: 1614977.489

RECORD:
 FD P.K./WASHER
 FD MAG/WASHER
 5/6/04, RGN
 SET MAG/WASHER
 8-3-04, MC
 FD MAG/WASHER
 REF3
 6/1/18, JLL
 4-27-21
 9-16-21, JFO



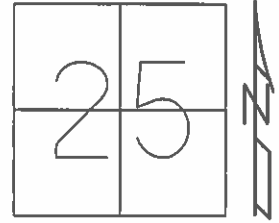
DIST:
 3B-3C= 10.98'
 3B-3A= 31.69'
 3B-3= 30.84'
 3C-3A= 29.62'
 3C-3= 32.66'
 3A-3= 11.05'
 3-3D= 30.86'

O.D.O.T. DISTRICT 2 SURVEY OFFICE (USE ONLY)

PERSONNEL _____ REFERENCE NO. 3 SHEET 5 OF 8

NOTES	<u>NUHFER</u>	DATE	<u>5-06-04</u>	ROUTE	<u>SR 235</u>
H.C.	<u>CANERBURY</u>	WEATHER	<u>SUNNY</u>	COUNTY	<u>WOOD</u>
R.C.	<u>ARMS</u>	TEMP.	<u>65°F</u>	TOWNSHIP	<u>JACKSON</u>
				SECTION	<u>25</u>
				T	<u>3</u> N
				R	<u>9</u> E

TYPE MONUMENT MAG/WASHER
 ON SURFACE - ~~BELOW~~ ON
 LEFT - ☉ PAV'T - ~~RIGHT~~ 2.5'
- TO - EDGE PAVEMENT
 S.L.M. 53+76.82

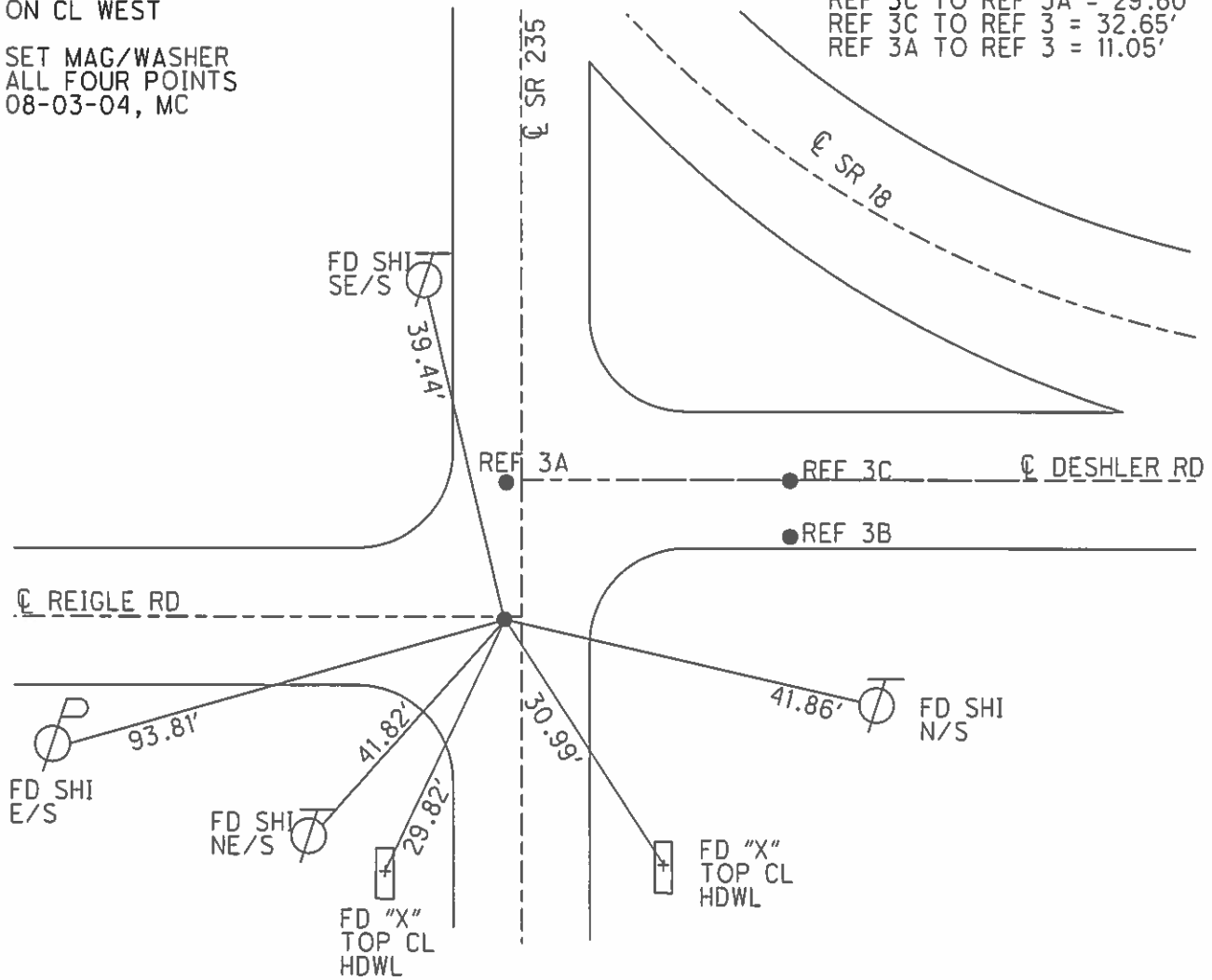


Grid: Northing: 554935.163 Easting: 1614977.299

RECORD:
 PK WASHER @SURFACE
 11.0 S. OF ☉ EAST
 2.5 LT. OF ☉ S.R. 235
 ON CL WEST

SET MAG/WASHER
 ALL FOUR POINTS
 08-03-04, MC

- REF 3B TO REF 3C = 10.99'
- REF 3B TO REF 3A = 31.68'
- REF 3B TO REF 3 = 30.84'
- REF 3C TO REF 3A = 29.60'
- REF 3C TO REF 3 = 32.65'
- REF 3A TO REF 3 = 11.05'



O.D.O.T. DISTRICT 2 SURVEY OFFICE

PERSONNEL

REFERENCE NO. 3

SHEET 3 OF 3

NOTES OTTO

H.C. KUSZ

R.C. BARNHISEL

DATE 7-21-93

WEATHER Cloudy

TEMP. +72°

ROUTE SR 18

COUNTY WOOD

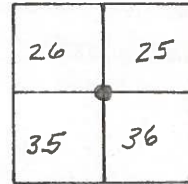
TOWNSHIP Jackson

SECTION 26

T 3 N R 9 E

SR 235

TYPE MONUMENT PK'S + WASHERS / PT "D" 1/2" I. PIN
 ON SURFACE - BELOW yes 2 1/2" DOWN
 LEFT - ☉ PAVT. - RIGHT INFD. BELOW
 - TO - EDGE PAVEMENT
 S.L.M. PT "D" 53+90



Record: PT "A" OVER STONE

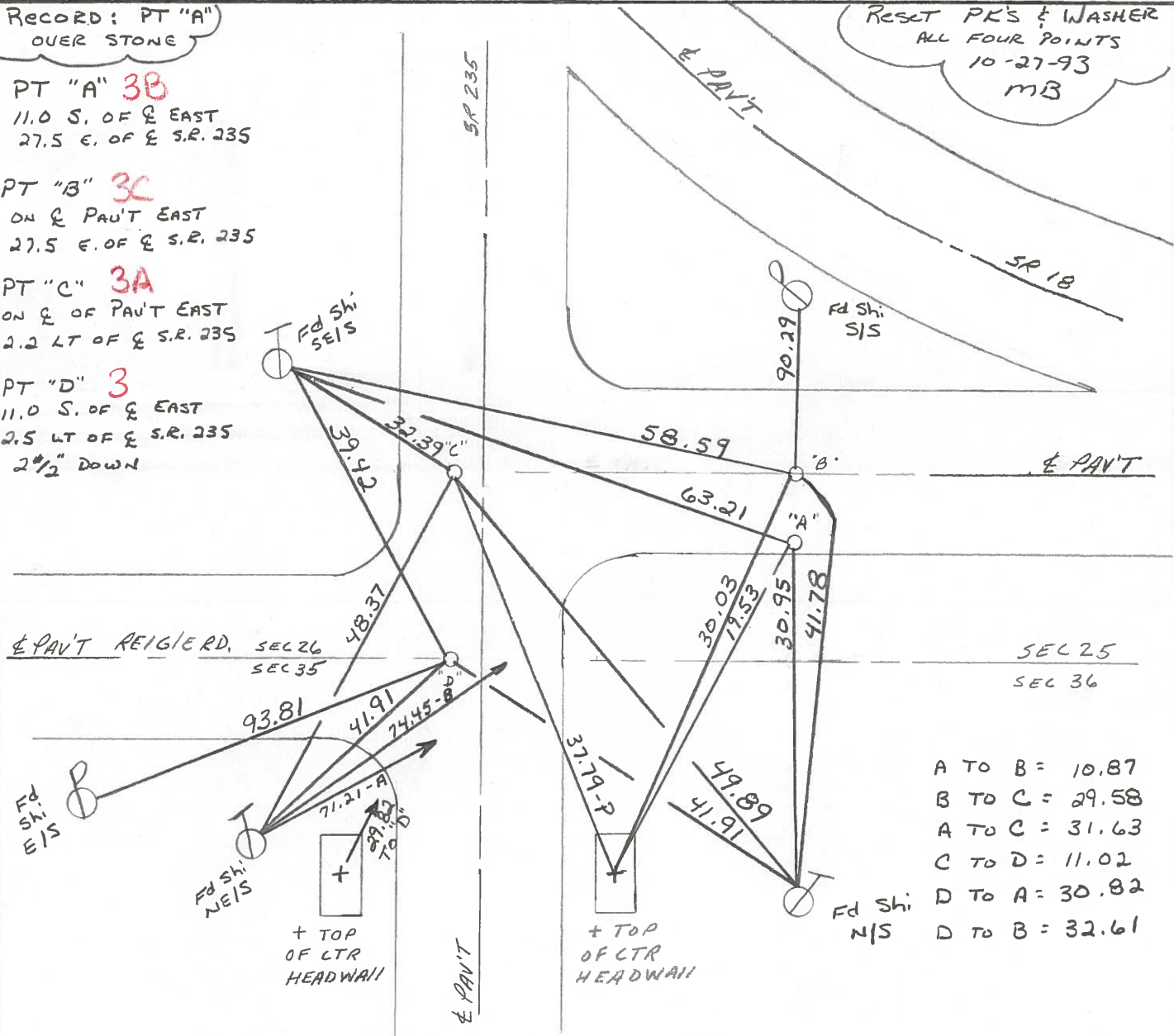
PT "A" **3B**
 11.0 S. OF E EAST
 27.5 E. OF E S.R. 235

PT "B" **3C**
 ON E PAVT EAST
 27.5 E. OF E S.E. 235

PT "C" **3A**
 ON E OF PAVT EAST
 2.2 LT OF E S.R. 235

PT "D" **3**
 11.0 S. OF E EAST
 2.5 LT OF E S.R. 235
 2 1/2" DOWN

RESET PK'S & WASHER ALL FOUR POINTS 10-27-93 MB



- A TO B = 10.87
- B TO C = 29.58
- A TO C = 31.63
- C TO D = 11.02
- D TO A = 30.82
- D TO B = 32.61

