

O.D.O.T. DISTRICT 2 SURVEY OFFICE (USE ONLY)

PERSONNEL

REFERENCE NO. 3 B

SHEET 7 OF 8

NOTES AUBLE

DATE 5-23-23

ROUTE SR 235

H.C. NIESE

WEATHER CALM

COUNTY WOOD

R.C. AUBLE

TEMP. 74° F

TOWNSHIP JACKSON

DWG BY AUBLE

PID PAVETRAIN

SECTION 25

T 3 N R 9 E

TYPE MONUMENT SM.R.R.SPIKE

~~ON SURFACE~~ - BELOW 1 1/2"

OFFSET Q PAVEMENT 28.6' ~~ET~~ : RT

- TO - EDGE PAVEMENT

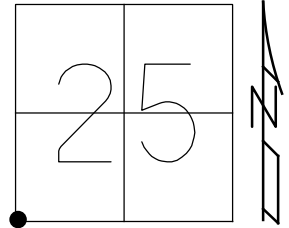
STATION: 53+77

HORZ.DATUM: NAD83(2011)

GEOID: NAVD88 2018

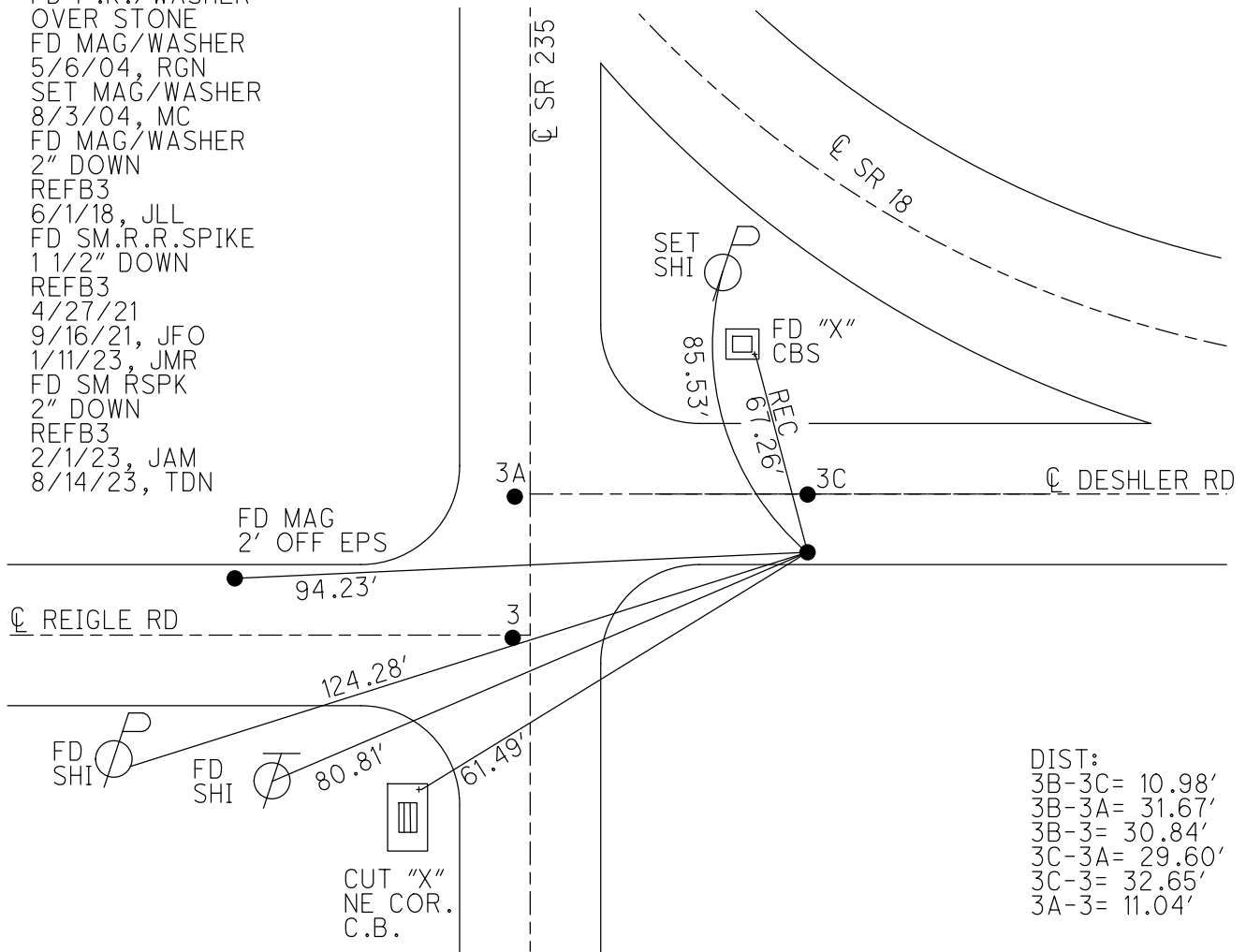
GRID: NORTHING: 554935.061

EASTING: 1615008.323



RECORD:
 SW COR. SEC. 25
 FD P.K./WASHER
 OVER STONE
 FD MAG/WASHER
 5/6/04, RGN
 SET MAG/WASHER
 8/3/04, MC
 FD MAG/WASHER
 2" DOWN
 REFB3
 6/1/18, JLL
 FD SM.R.R.SPIKE
 1 1/2" DOWN
 REFB3
 4/27/21
 9/16/21, JFO
 1/11/23, JMR
 FD SM RSPK
 2" DOWN
 REFB3
 2/1/23, JAM
 8/14/23, TDN

NOTE: SR 18 REF15C



DIST:
 3B-3C= 10.98'
 3B-3A= 31.67'
 3B-3= 30.84'
 3C-3A= 29.60'
 3C-3= 32.65'
 3A-3= 11.04'

O.D.O.T. DISTRICT 2 SURVEY OFFICE (USE ONLY)

PERSONNEL

REFERENCE NO. 3 B

SHEET 7 OF 8

NOTES RHOADES DATE 4-27-21

H.C. O'DONNELL WEATHER WINDY

R.C. RHOADES TEMP. 64° F

ROUTE SR 235

COUNTY WOOD

TOWNSHIP JACKSON

SECTION 25

DWG BY AUBLE PID PAVETRAIN

T 3 N R 9 E

TYPE MONUMENT SM.R.R.SPIKE

~~ON SURFACE~~ - BELOW 1 1/2"

OFFSET \odot PAVEMENT 28.6' ~~RT~~ : RT

- TO - EDGE PAVEMENT

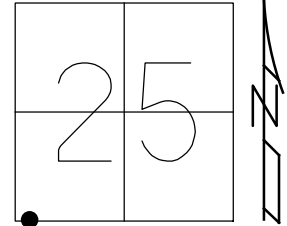
STATION: 53+77

HORIZ.DATUM: NAD83(2011)

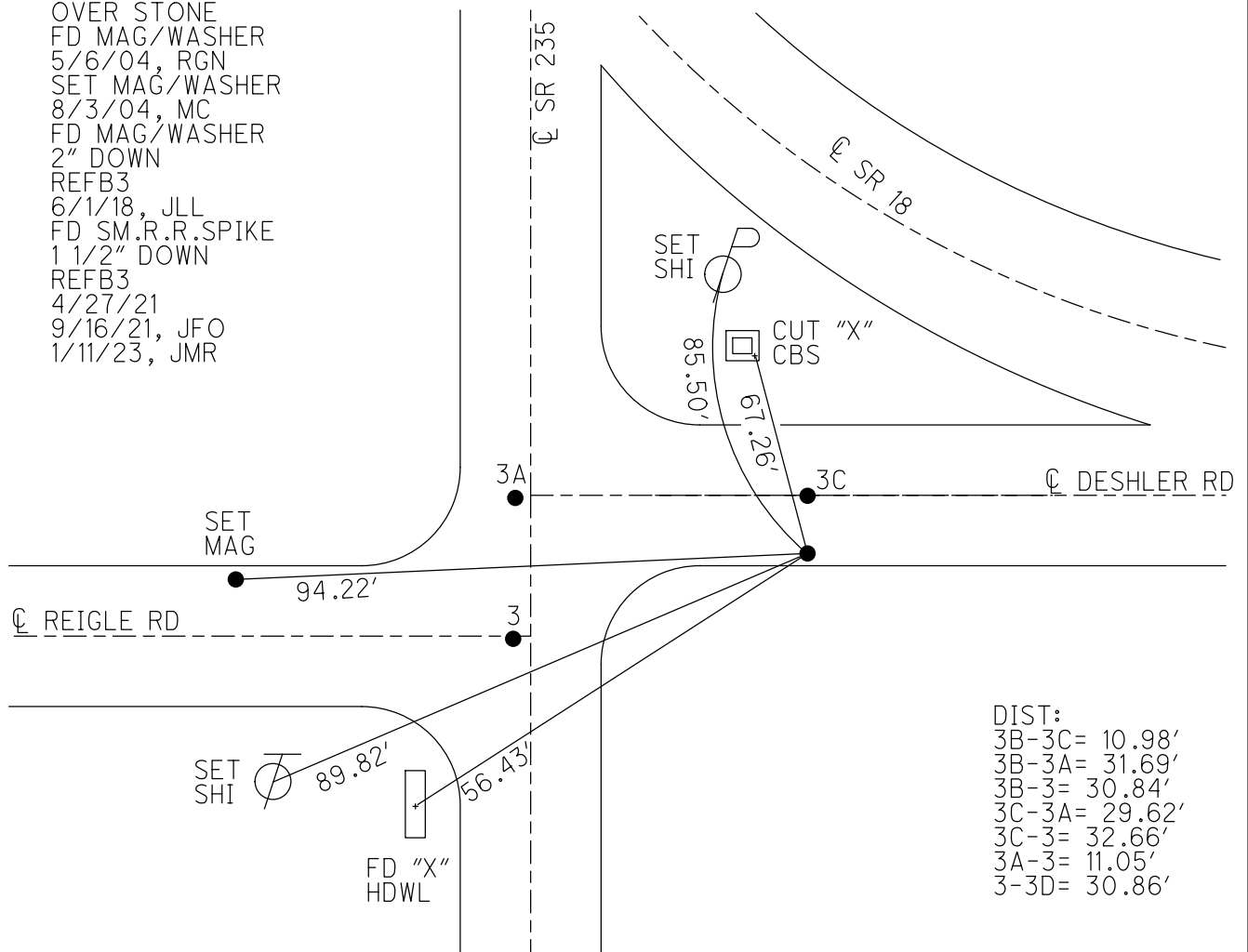
GEOID: NAVD88 2018

GRID: NORTHING: 554935.079

EASTING: 1615008.332



RECORD:
 FD P.K./WASHER
 OVER STONE
 FD MAG/WASHER
 5/6/04, RGN
 SET MAG/WASHER
 8/3/04, MC
 FD MAG/WASHER
 2" DOWN
 REFB3
 6/1/18, JLL
 FD SM.R.R.SPIKE
 1 1/2" DOWN
 REFB3
 4/27/21
 9/16/21, JFO
 1/11/23, JMR



DIST:
 3B-3C= 10.98'
 3B-3A= 31.69'
 3B-3= 30.84'
 3C-3A= 29.62'
 3C-3= 32.66'
 3A-3= 11.05'
 3-3D= 30.86'

O.D.O.T. DISTRICT 2 SURVEY OFFICE (USE ONLY)

PERSONNEL

REFERENCE NO. 3 B

SHEET 7 OF 8

NOTES RHOADES DATE 4-27-21
 H.C. O'DONNELL WEATHER WINDY
 R.C. RHOADES TEMP. 64° F

ROUTE SR 235
 COUNTY WOOD
 TOWNSHIP JACKSON
 SECTION 25

DWG BY AUBLE PID PAVETRAIN

T 3 N R 9 E

TYPE MONUMENT SM.R.R.SPIKE

~~ON SURFACE~~ - BELOW 1 1/2"

OFFSET \odot PAVEMENT 28.6' \pm : RT

- TO - EDGE PAVEMENT

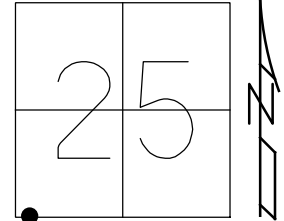
STATION: 53+77

HORZ.DATUM: NAD83(2011)

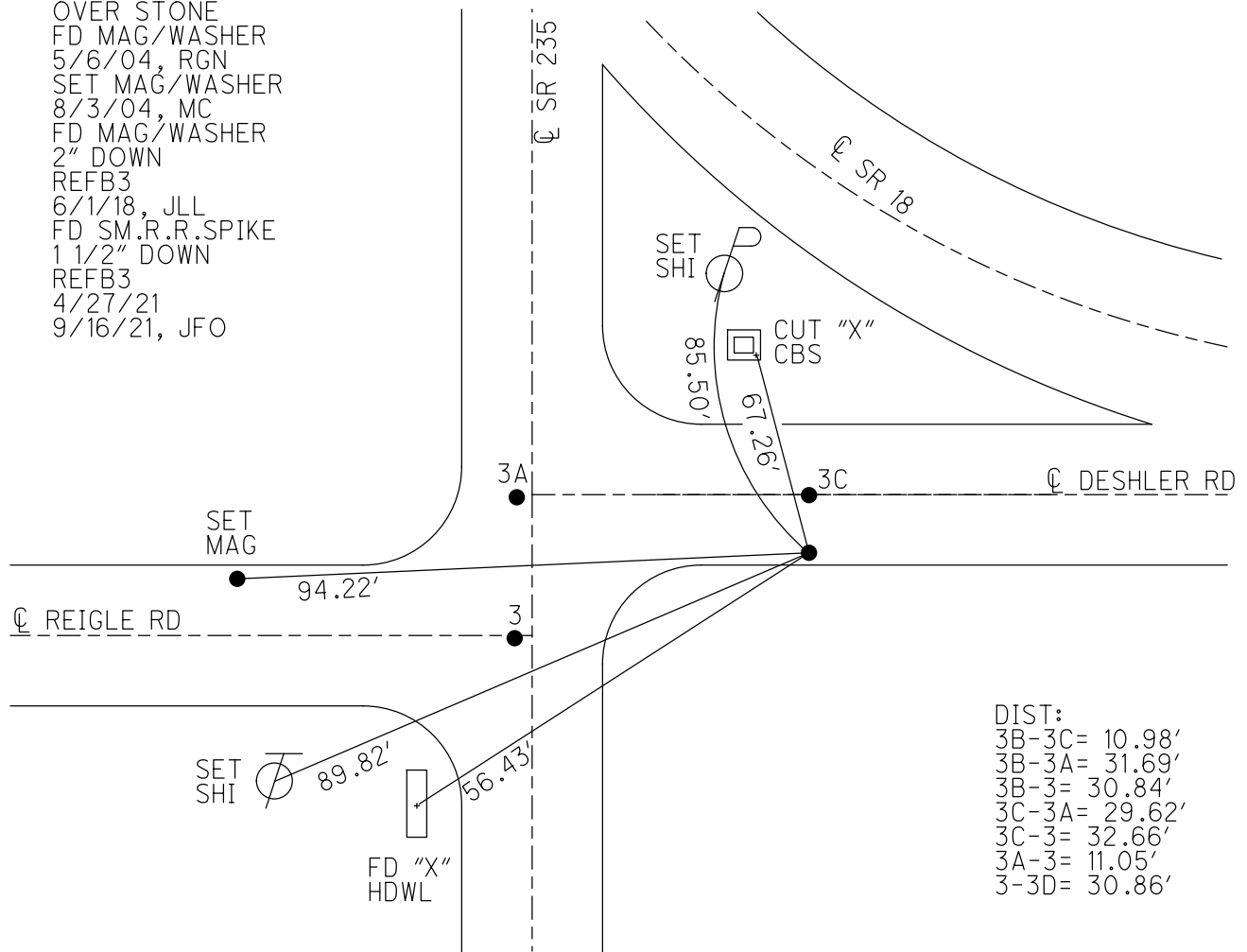
GEOID: NAVD88 2018

GRID: NORTHING: 554935.079

EASTING: 1615008.332



RECORD:
 FD P.K./WASHER
 OVER STONE
 FD MAG/WASHER
 5/6/04, RGN
 SET MAG/WASHER
 8/3/04, MC
 FD MAG/WASHER
 2" DOWN
 REFB3
 6/1/18, JLL
 FD SM.R.R.SPIKE
 1 1/2" DOWN
 REFB3
 4/27/21
 9/16/21, JFO



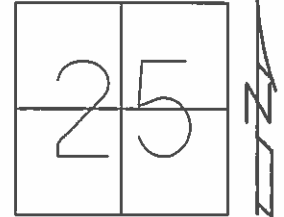
DIST:
 3B-3C= 10.98'
 3B-3A= 31.69'
 3B-3= 30.84'
 3C-3A= 29.62'
 3C-3= 32.66'
 3A-3= 11.05'
 3-3D= 30.86'

O.D.O.T. DISTRICT 2 SURVEY OFFICE (USE ONLY)

PERSONNEL _____ REFERENCE NO. 3 B SHEET 7 OF 8

NOTES NUHFER DATE 5-06-04 ROUTE SR 235
 H.C. CANERBURY WEATHER SUNNY COUNTY WOOD
 R.C. ARMS TEMP. 65°F TOWNSHIP JACKSON
 _____ SECTION 25
 _____ T 3 N R 9 E

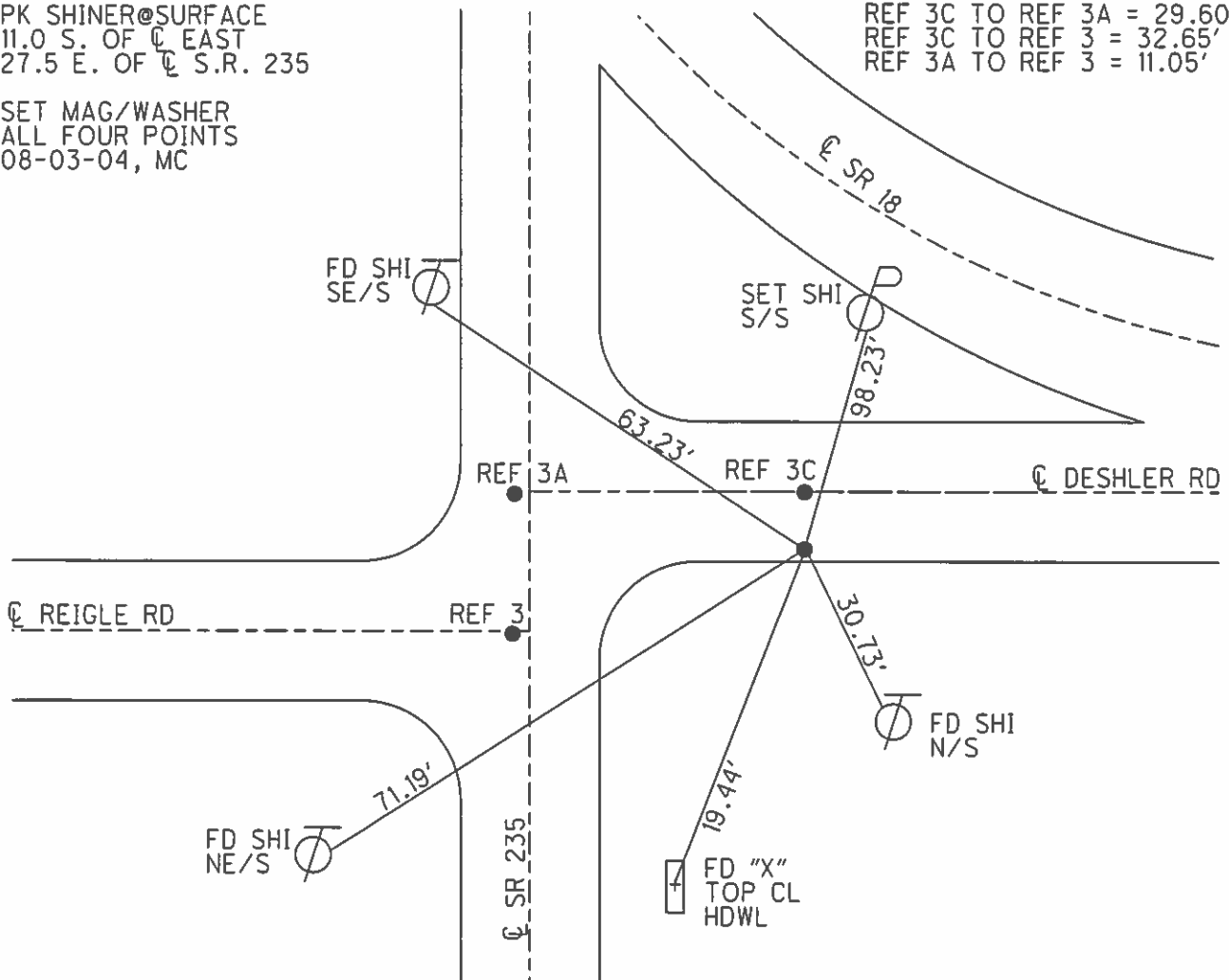
TYPE MONUMENT MAG/WASHER
 ON SURFACE - ~~BELOW~~ ON _____
~~LEFT~~ - ℄ PAV'T - RIGHT 27.5'
 - TO - EDGE PAVEMENT
 S.L.M. 53+77



Grid: Northing: 554935.000 Easting: 1615008.353

RECORD:
 OVER STONE
 PK SHINER@SURFACE
 11.0 S. OF ℄ EAST
 27.5 E. OF ℄ S.R. 235
 SET MAG/WASHER
 ALL FOUR POINTS
 08-03-04, MC

REF 3B TO REF 3C = 10.99'
 REF 3B TO REF 3A = 31.68'
 REF 3B TO REF 3 = 30.84'
 REF 3C TO REF 3A = 29.60'
 REF 3C TO REF 3 = 32.65'
 REF 3A TO REF 3 = 11.05'



4 FD "X"
 TOP CL
 HDWL

O.D.O.T. DISTRICT 2 SURVEY OFFICE

PERSONNEL

REFERENCE NO. 3

SHEET 5 OF 5

NOTES NUHFER

DATE 5-06-04

ROUTE S.R. 235
S.R. 18

H.C. CANTERBURY

WEATHER SUN

COUNTY WOOD

R.C. ARMS

TEMP. +65°

TOWNSHIP JACKSON

SECTION 26

T 3 N R 9 E

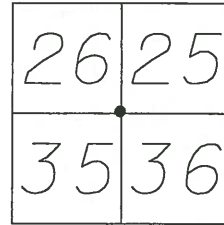
TYPE MONUMENT P.K./WASHER
PT "D" 1/2" IPIN>>

ON SURFACE YES

LEFT-CL PAV'T-RIGHT INFO. BELOW

TO EDGE PAVEMENT

S.L.M. PT "D" 53+90



RECORD: PT "A"
OVER STONE

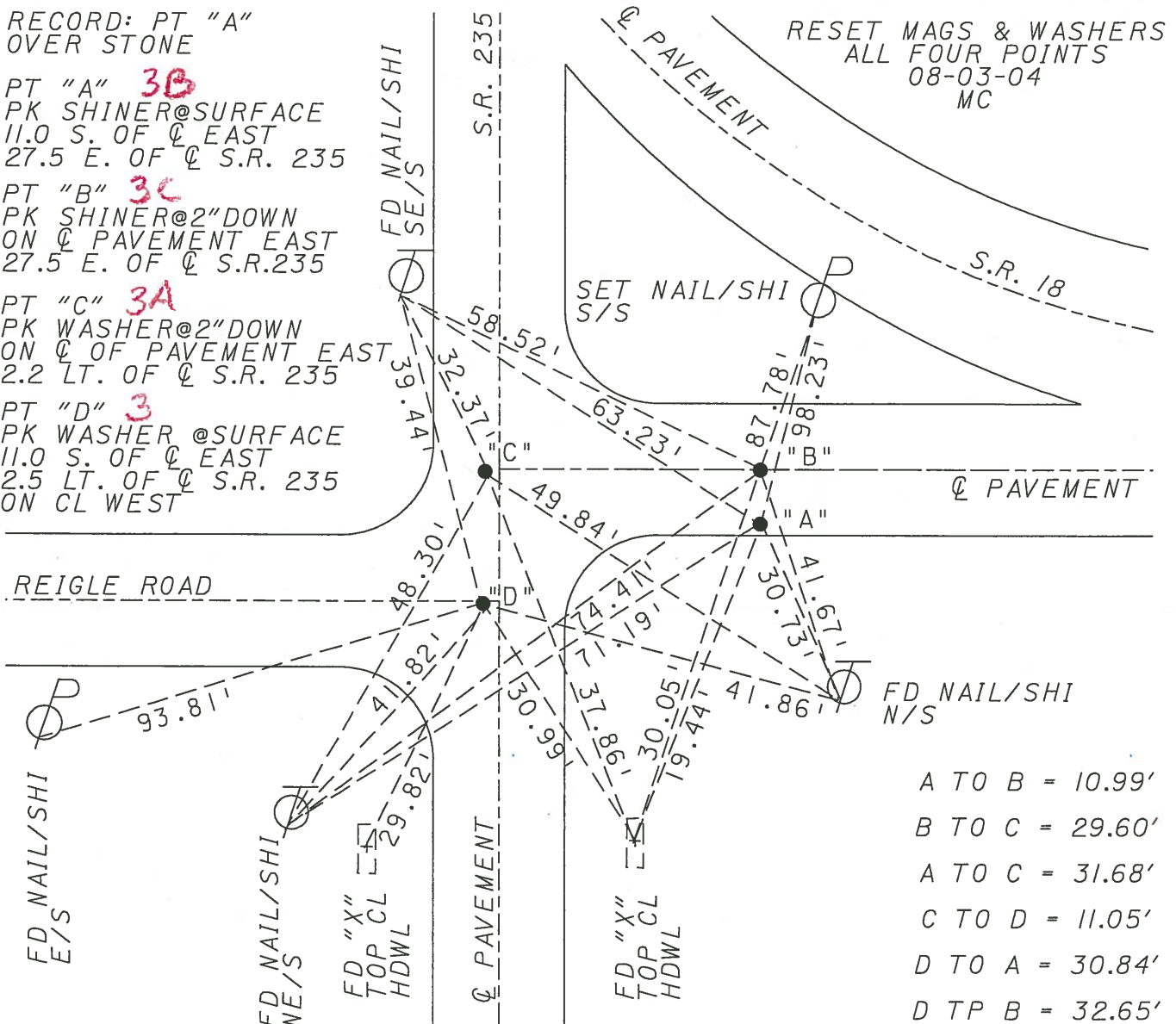
PT "A" **3B**
PK SHINER@SURFACE
11.0 S. OF CL EAST
27.5 E. OF CL S.R. 235

PT "B" **3C**
PK SHINER@2"DOWN
ON CL PAVEMENT EAST
27.5 E. OF CL S.R.235

PT "C" **3A**
PK WASHER@2"DOWN
ON CL OF PAVEMENT EAST
2.2 LT. OF CL S.R. 235

PT "D" **3**
PK WASHER @SURFACE
11.0 S. OF CL EAST
2.5 LT. OF CL S.R. 235
ON CL WEST

RESET MAGS & WASHERS
ALL FOUR POINTS
08-03-04
MC



- A TO B = 10.99'
- B TO C = 29.60'
- A TO C = 31.68'
- C TO D = 11.05'
- D TO A = 30.84'
- D TP B = 32.65'

O.D.O.T. DISTRICT 2 SURVEY OFFICE

PERSONNEL

REFERENCE NO. 3

SHEET 3 OF 3

NOTES OTTO

H.C. KUSZ

R.C. BARNHISEL

DATE 7-21-93

WEATHER cloudy

TEMP. +72°

ROUTE SR 18

COUNTY WOOD

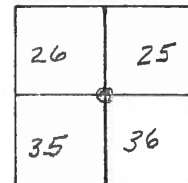
TOWNSHIP Jackson

SECTION 26

T 3 N R 9 E

SR 235

TYPE MONUMENT PK'S + WASHERS / PT "D" 1/2" I. PIN
 ON SURFACE - ~~BELOW~~ yes 2 1/2" DOWN
 LEFT- & PAVT. - RIGHT INFO. BELOW
 - TO - EDGE PAVEMENT
 S.L.M. PT "D" 53+90



Record: PT "A"
OVER STONE

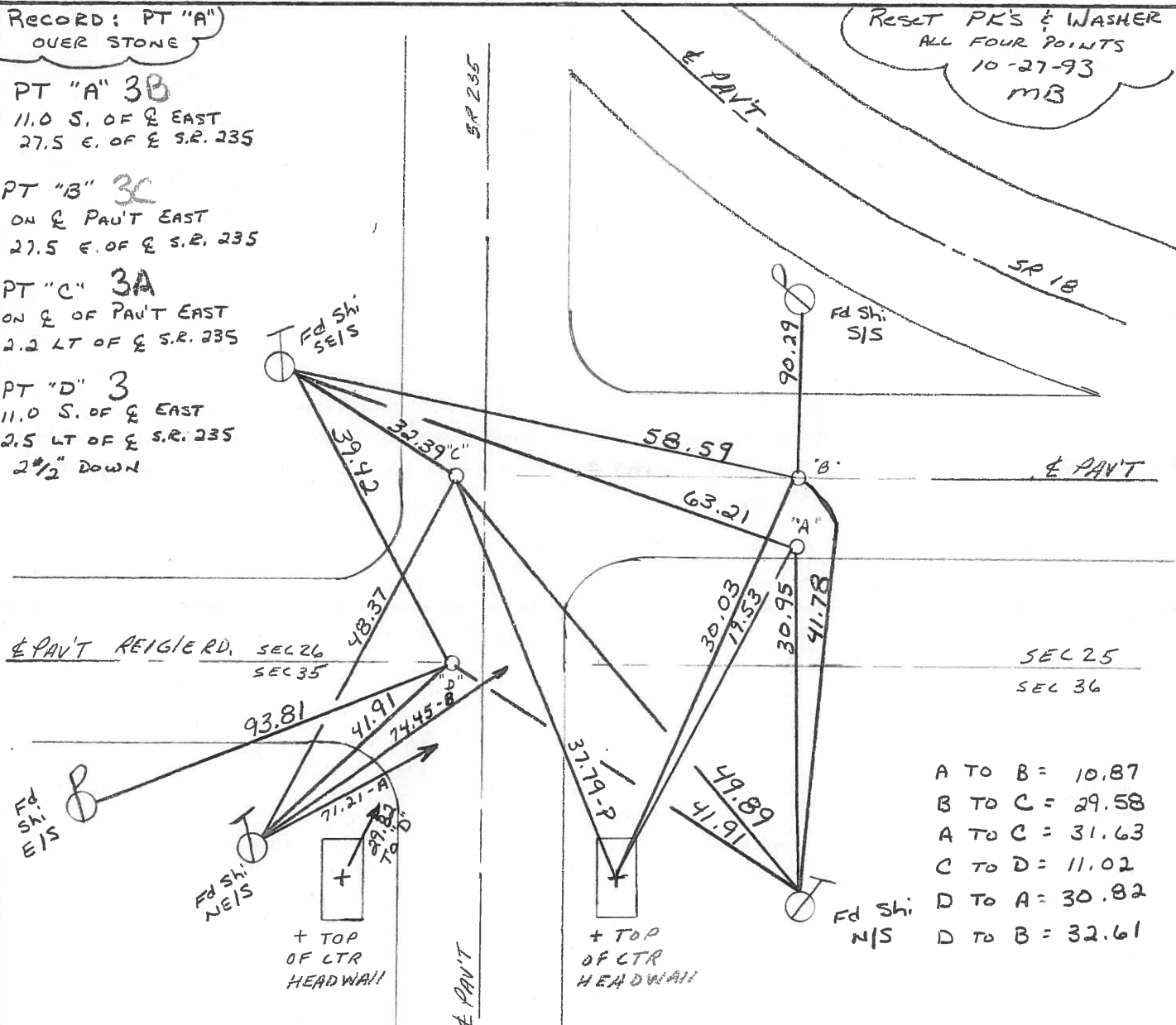
PT "A" 3B
11.0 S. OF & EAST
27.5 E. OF & S.R. 235

PT "B" 3C
ON & PAVT EAST
27.5 E. OF & S.R. 235

PT "C" 3A
ON & OF PAVT EAST
2.2 LT OF & S.R. 235

PT "D" 3
11.0 S. OF & EAST
2.5 LT OF & S.R. 235
2 1/2" DOWN

RESET PK'S & WASHER
ALL FOUR POINTS
10-27-93
MB



- A TO B = 10.87
- B TO C = 29.58
- A TO C = 31.63
- C TO D = 11.02
- D TO A = 30.82
- D TO B = 32.61

O.D.O.T. DISTRICT 2 SURVEY OFFICE

PERSONNEL

REFERENCE NO. 15

SHEET OF

NOTES BARNHSEL

H.C. Loehcke

DATE 3-19-91

ROUTE 18 & 235

R.C. HOFFMAN

WEATHER cloudy - Windy

COUNTY Wood

TEMP. +45°

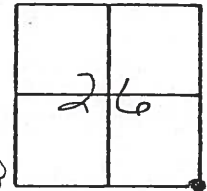
TOWNSHIP JACKSON

SECTION 26

T 3 N R 9 E

TYPE MONUMENT P.K.'s & Washers
 ON SURFACE - BELOW YES (ALL)
 LEFT- & PAV'T. - RIGHT INFORMATION Below
 - TO - EDGE PAVEMENT

PT. "D"
 1/2" IRON PIN
 1 1/2" DOWN



S.L.M. NOT COVERED IN 1991 RESURFACING OF S.R. 18

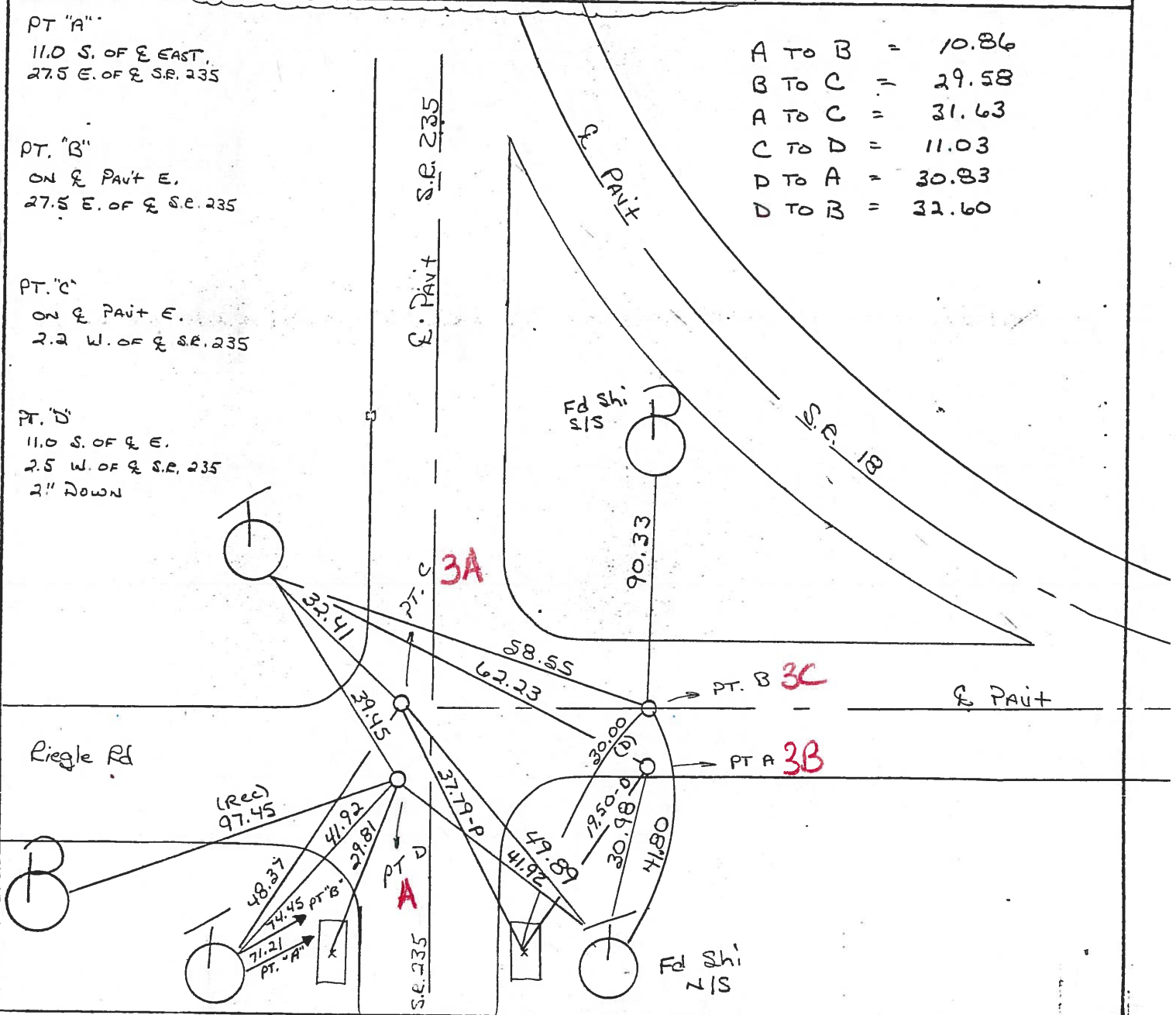
A TO B	=	10.86
B TO C	=	29.58
A TO C	=	31.63
C TO D	=	11.03
D TO A	=	30.83
D TO B	=	32.60

PT. "A"
 11.0 S. OF E EAST,
 27.5 E. OF E S.R. 235

PT. "B"
 ON E PAVT E,
 27.5 E. OF E S.R. 235

PT. "C"
 ON E PAVT E,
 2.2 W. OF E S.R. 235

PT. "D"
 11.0 S. OF E E,
 2.5 W. OF E S.R. 235
 2" DOWN



Ed "X" ON BOTH SIDES

Q.D.O.T. DISTRICT 2 SURVEY OFFICE

SHEET ~~13~~ OF

County WOOD S.R. 18

Date 11-28-83

Township JACKSON

Weather RAIN, CLOUDY

Section 26

Temp. +40°

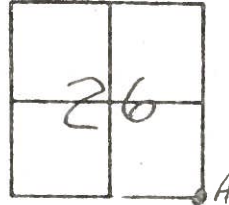
T N, R E

Personnel BARNHISEL

HOUSEHOLDER

LOEHRKE

#3

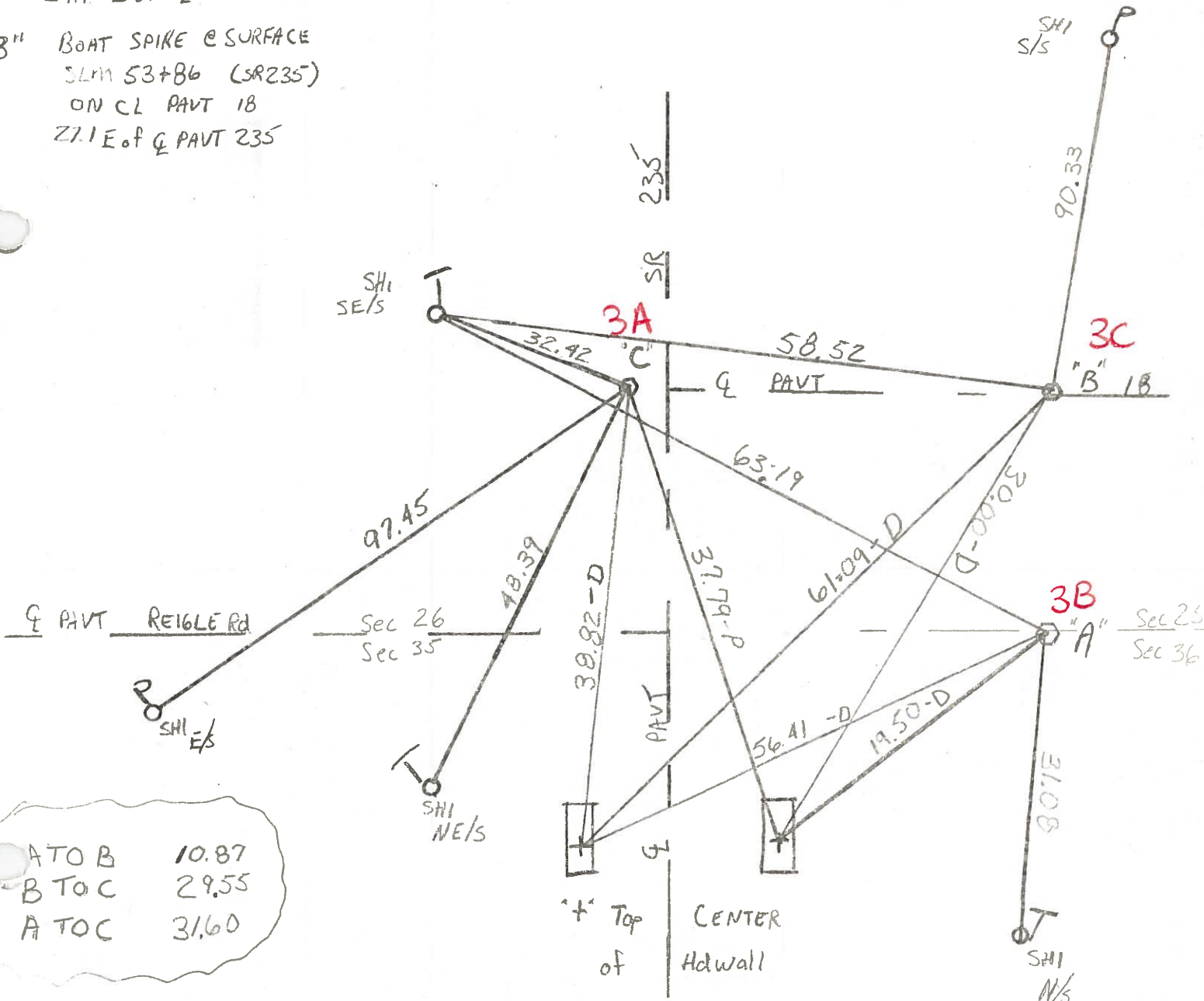


"A" RR SPIKE @ SURFACE OVER STONE
 SLM 53+75 (SR 235)
 10.9 S of Q PAVT 18 #15
 27.1 E of Q PAVT 235

"C" RR SPIKE @ SURFACE
 SLM 53+86 (SR 235)
 ON Q PAVT SR 18 E
 2.5' W of Q PAVT 235

#15

"B" BOAT SPIKE @ SURFACE
 SLM 53+86 (SR 235)
 ON CL PAVT 18
 27.1 E of Q PAVT 235



ATO B 10.87
 B TO C 29.55
 A TO C 31.60

'+' Top
 of
 CENTER
 of
 Hdwall

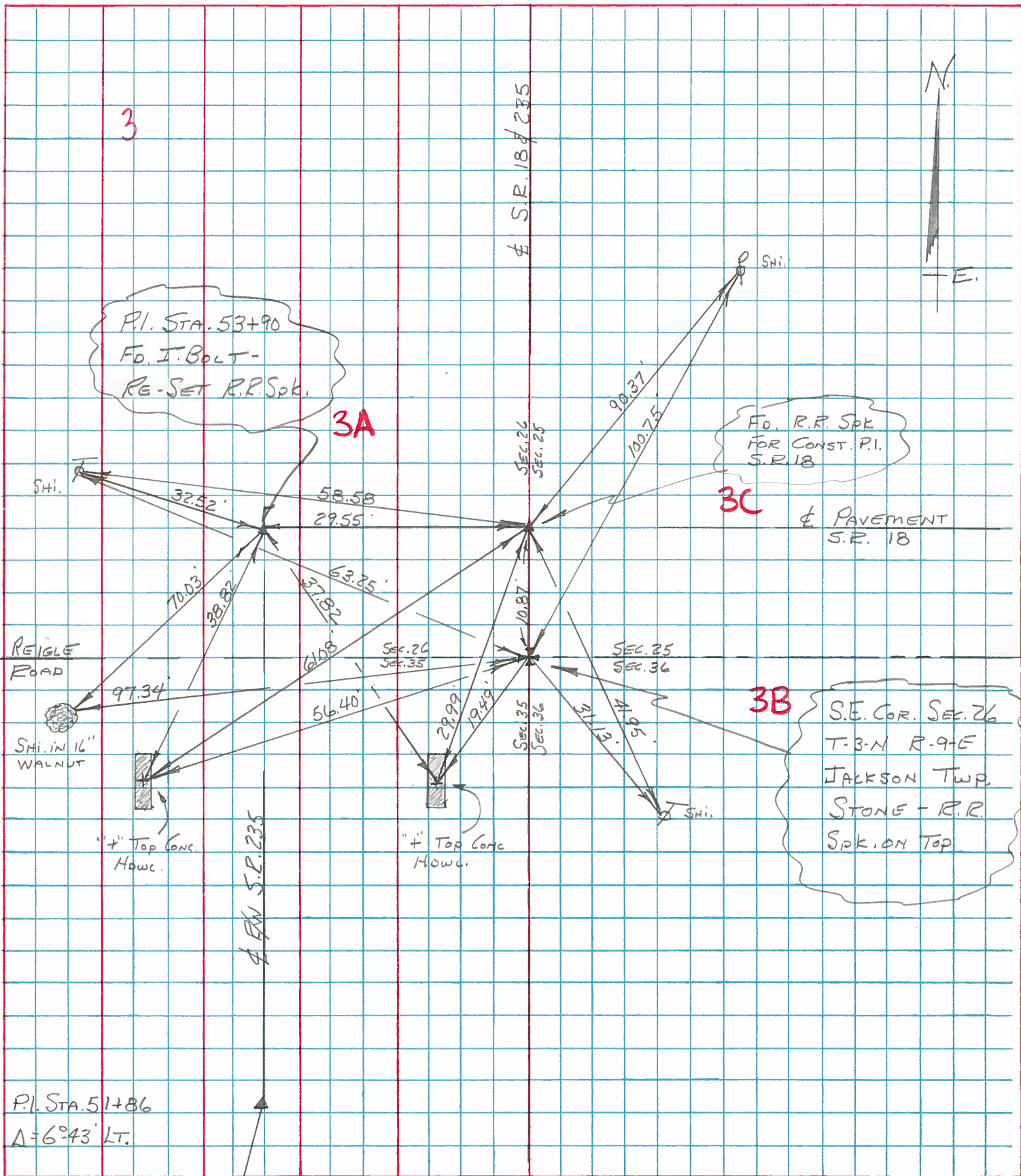
PERSONNEL	TITLE	PERSONNEL	TITLE
BURNSIDE			
SMITH			
BOWERS			
MEAD			

COUNTY WOOD DATE 12-8-75

S. R. 235 WEATHER CLOUDY

SEC. S.E. COR SEC. 26 JACKSON TWP TEMP. + 36°

DESCRIPTION CONTROL TIES @ S.R. 235 & S.R. 18 JOB NO. _____



PERSONNEL	TITLE	PERSONNEL	TITLE
BURNSIDE			
SMITH			
BOWERS			

COUNTY Wood DATE 5-1-72

S. R. 235 E 18 WEATHER SHOWERS

SEC. _____ TEMP. +62°

DESCRIPTION CONTROL POINTS @ S.R. 235 E 18 JOB NO. _____

