

O.D.O.T. DISTRICT 2 SURVEY OFFICE (USE ONLY)

PERSONNEL

REFERENCE NO. 3 C

SHEET 8 OF 8

NOTES AUBLE

DATE 5-23-23

ROUTE SR 235

H.C. NIESE

WEATHER CALM

COUNTY WOOD

R.C. AUBLE

TEMP. 74° F

TOWNSHIP JACKSON

DWG BY AUBLE

PID PAVETRAIN

SECTION 25

T 3 N R 9 E

TYPE MONUMENT MAG/WASHER

ON SURFACE - ~~BELOW~~ ON

OFFSET ☉ PAVEMENT 27.5' ~~±~~ : RT

- TO - EDGE PAVEMENT

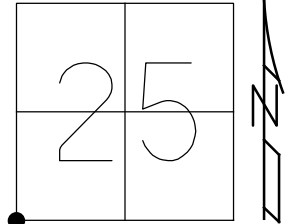
STATION: 53+87

HORZ. DATUM: NAD83(2011)

GEOID: NAVD88 2018

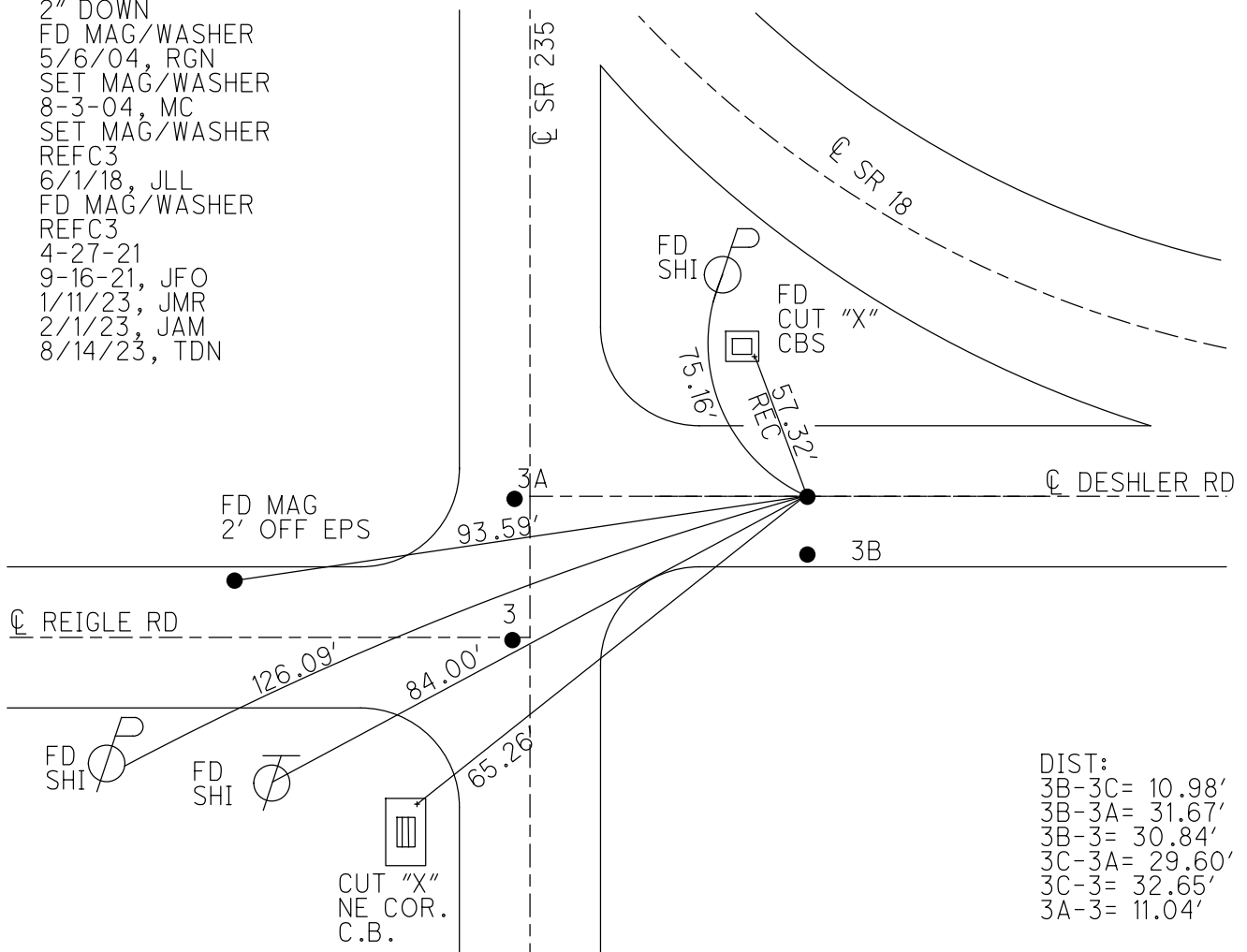
GRID: NORTHING: 554946.037

EASTING: 1615008.286



RECORD:
 FD P.K./WASHER
 2" DOWN
 FD MAG/WASHER
 5/6/04, RGN
 SET MAG/WASHER
 8-3-04, MC
 SET MAG/WASHER
 REFC3
 6/1/18, JLL
 FD MAG/WASHER
 REFC3
 4-27-21
 9-16-21, JFO
 1/11/23, JMR
 2/1/23, JAM
 8/14/23, TDN

NOTE: SR 18 REF15B

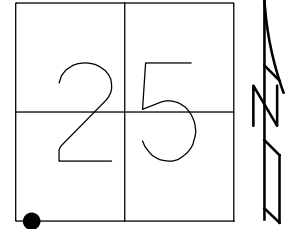


DIST:
 3B-3C= 10.98'
 3B-3A= 31.67'
 3B-3= 30.84'
 3C-3A= 29.60'
 3C-3= 32.65'
 3A-3= 11.04'

O.D.O.T. DISTRICT 2 SURVEY OFFICE (USE ONLY)

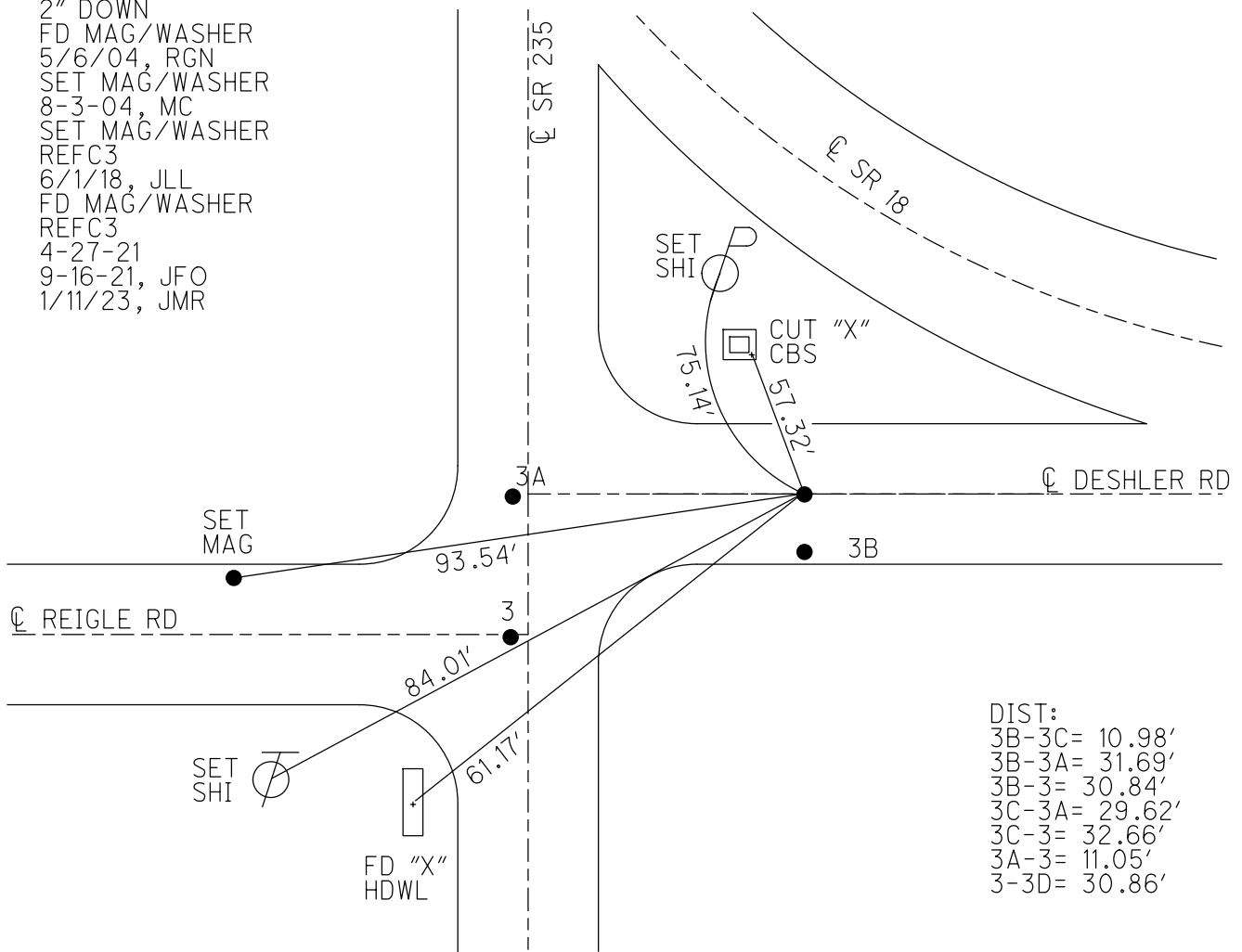
PERSONNEL _____ REFERENCE NO. 3 C SHEET 8 OF 8
 NOTES RHOADES DATE 4-27-21 ROUTE SR 235
 H.C. O'DONNELL WEATHER WINDY COUNTY WOOD
 R.C. RHOADES TEMP. 64° F TOWNSHIP JACKSON
 DWG BY AUBLE PID PAVETRAIN SECTION 25
 T 3 N R 9 E

TYPE MONUMENT MAG/WASHER
 ON SURFACE - ~~BELOW~~ ON
 OFFSET Q PAVEMENT 27.5' ~~LT~~ : RT
 - TO - EDGE PAVEMENT
 STATION: 53+87



HORIZ. DATUM: NAD83(2011) GEOID: NAVD88 2018
 GRID: NORTHING: 554946.043 EASTING: 1615008.293

RECORD:
 FD P.K./WASHER
 2" DOWN
 FD MAG/WASHER
 5/6/04, RGN
 SET MAG/WASHER
 8-3-04, MC
 SET MAG/WASHER
 REFC3
 6/1/18, JLL
 FD MAG/WASHER
 REFC3
 4-27-21
 9-16-21, JFO
 1/11/23, JMR



DIST:
 3B-3C= 10.98'
 3B-3A= 31.69'
 3B-3= 30.84'
 3C-3A= 29.62'
 3C-3= 32.66'
 3A-3= 11.05'
 3-3D= 30.86'

O.D.O.T. DISTRICT 2 SURVEY OFFICE (USE ONLY)

PERSONNEL _____ REFERENCE NO. 3 C SHEET 8 OF 8

NOTES RHOADES DATE 4-27-21 ROUTE SR 235
 H.C. O'DONNELL WEATHER WINDY COUNTY WOOD
 R.C. RHOADES TEMP. 64° F TOWNSHIP JACKSON

SECTION 25
T 3 N R 9 E

DWG BY AUBLE PID PAVETRAN

TYPE MONUMENT MAG/WASHER

ON SURFACE - ~~BELOW~~ ON

OFFSET \varnothing PAVEMENT 27.5' ~~LT~~ : RT

- TO - EDGE PAVEMENT

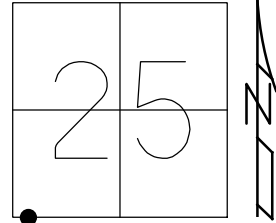
STATION: 53+87

HORZ. DATUM: NAD83(2011)

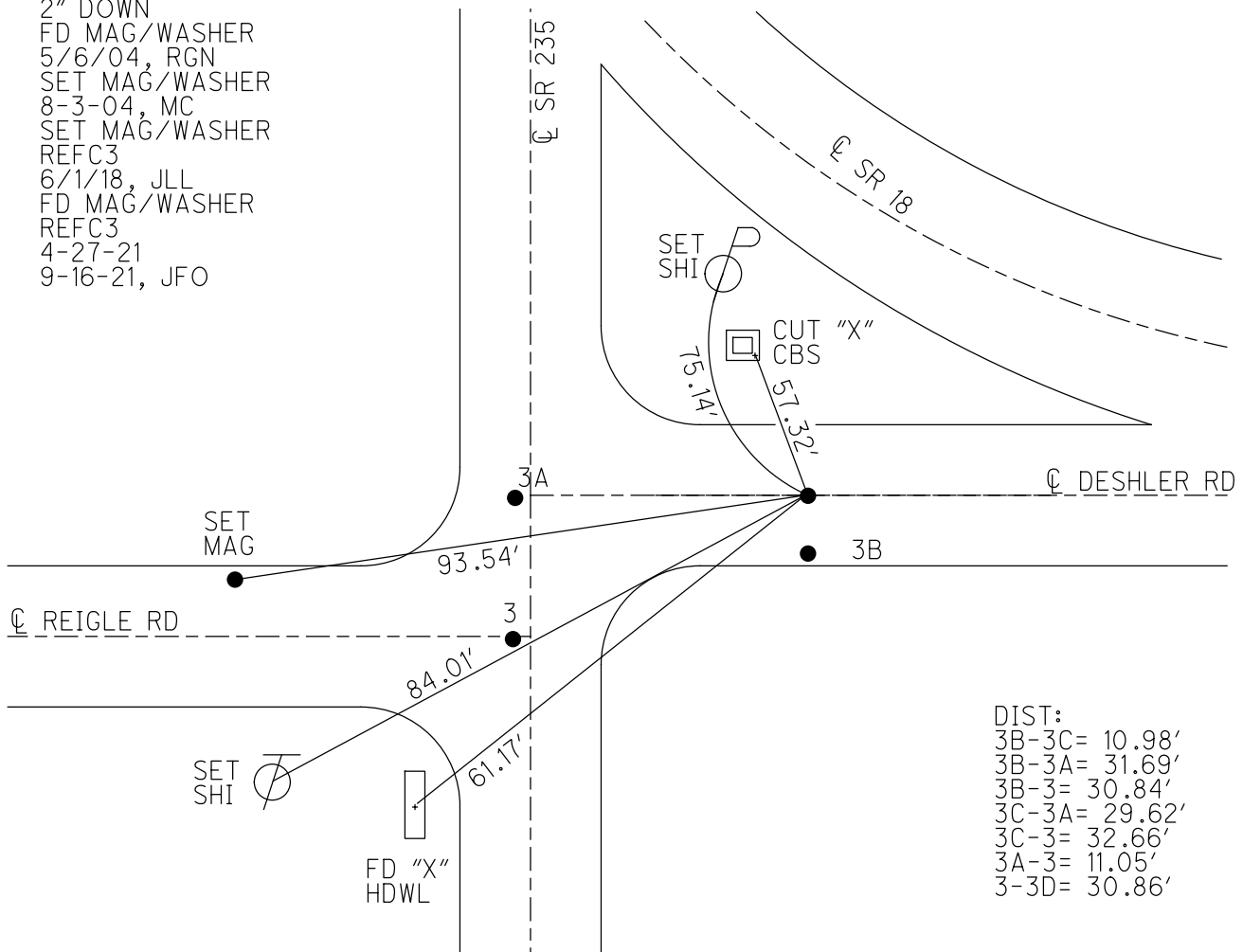
GEOID: NAVD88 2018

GRID: NORTHING: 554946.043

EASTING: 1615008.293



RECORD:
 FD P.K./WASHER
 2" DOWN
 FD MAG/WASHER
 5/6/04, RGN
 SET MAG/WASHER
 8-3-04, MC
 SET MAG/WASHER
 REFC3
 6/1/18, JLL
 FD MAG/WASHER
 REFC3
 4-27-21
 9-16-21, JFO



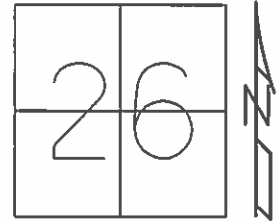
DIST:
 3B-3C= 10.98'
 3B-3A= 31.69'
 3B-3= 30.84'
 3C-3A= 29.62'
 3C-3= 32.66'
 3A-3= 11.05'
 3-3D= 30.86'

O.D.O.T. DISTRICT 2 SURVEY OFFICE (USE ONLY)

PERSONNEL _____ REFERENCE NO. 3 C SHEET 8 OF 8

NOTES NUHFER DATE 5-06-04 ROUTE SR 235
 H.C. CANERBURY WEATHER SUNNY COUNTY WOOD
 R.C. ARMS TEMP. 65°F TOWNSHIP JACKSON
 SECTION 26
 T 3 N R 9 E

TYPE MONUMENT MAG/WASHER
 ON SURFACE - ~~BELOW~~ ON _____
~~LEFT~~ - ☉ PAV'T - RIGHT 27.5'
 - TO - EDGE PAVEMENT
 S.L.M. 53+87

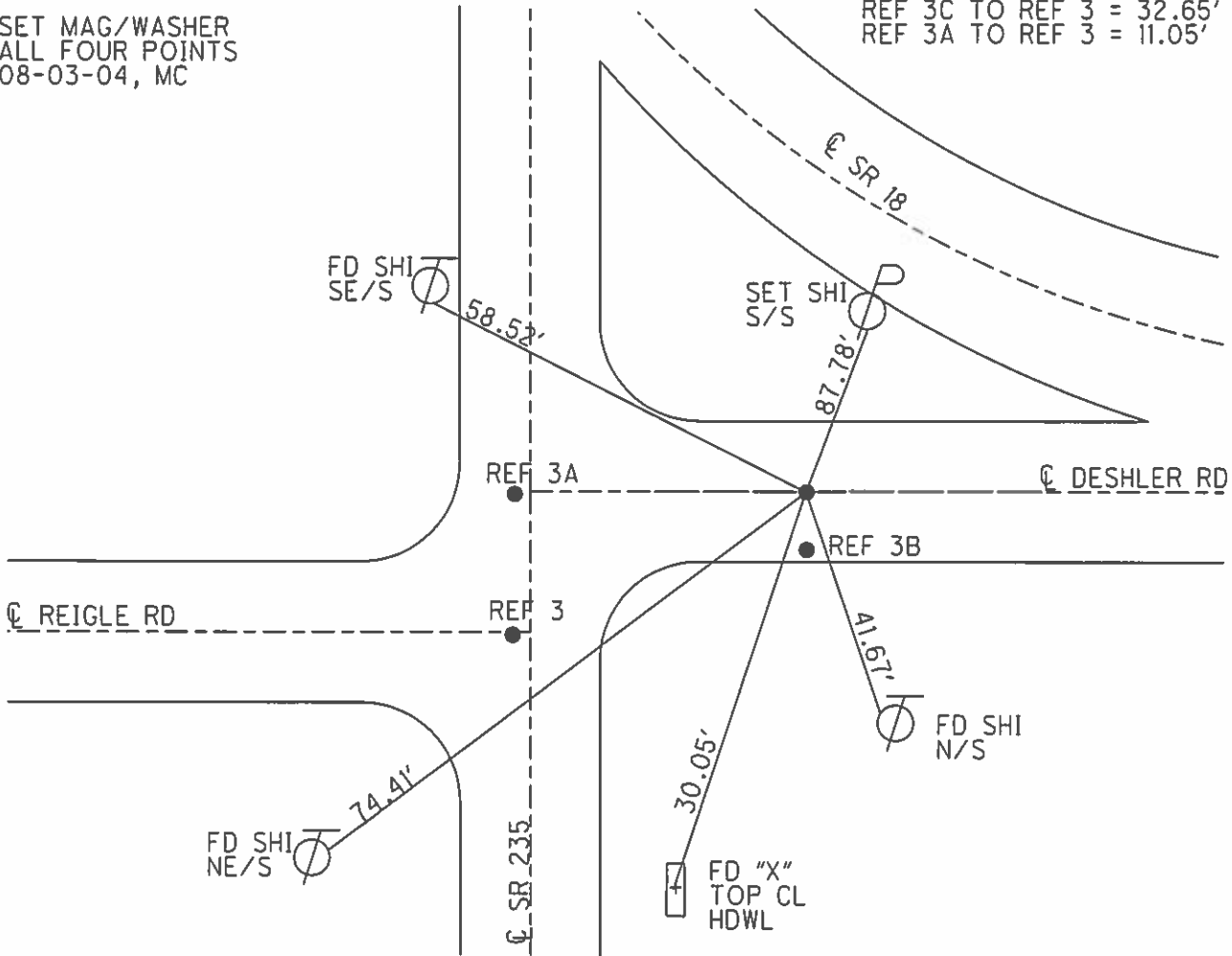


Grid: Northing: 554945.976 Easting: 1615008.281

RECORD:
 PK SHINER @ 2" DOWN
 ON ☉ PAVEMENT EAST
 27.5 E. OF ☉ S.R. 235

- REF 3B TO REF 3C = 10.99'
- REF 3B TO REF 3A = 31.68'
- REF 3B TO REF 3 = 30.84'
- REF 3C TO REF 3A = 29.60'
- REF 3C TO REF 3 = 32.65'
- REF 3A TO REF 3 = 11.05'

SET MAG/WASHER
 ALL FOUR POINTS
 08-03-04, MC



O.D.O.T. DISTRICT 2 SURVEY OFFICE

PERSONNEL

REFERENCE NO. 3

SHEET 5 OF 5

NOTES NUHFER

DATE 5-06-04

ROUTE S.R. 235
S.R. 18

H.C. CANTERBURY

WEATHER SUN

COUNTY WOOD

R.C. ARMS

TEMP. +65°

TOWNSHIP JACKSON

SECTION 26

T 3 N R 9 E

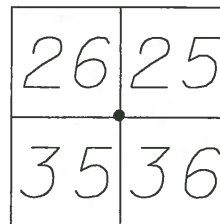
TYPE MONUMENT P.K./WASHER
PT "D" 1/2" IPIN>>

ON SURFACE YES

LEFT-☐ PAV'T-RIGHT INFO. BELOW

TO EDGE PAVEMENT

S.L.M. PT "D" 53+90



RECORD: PT "A"
OVER STONE

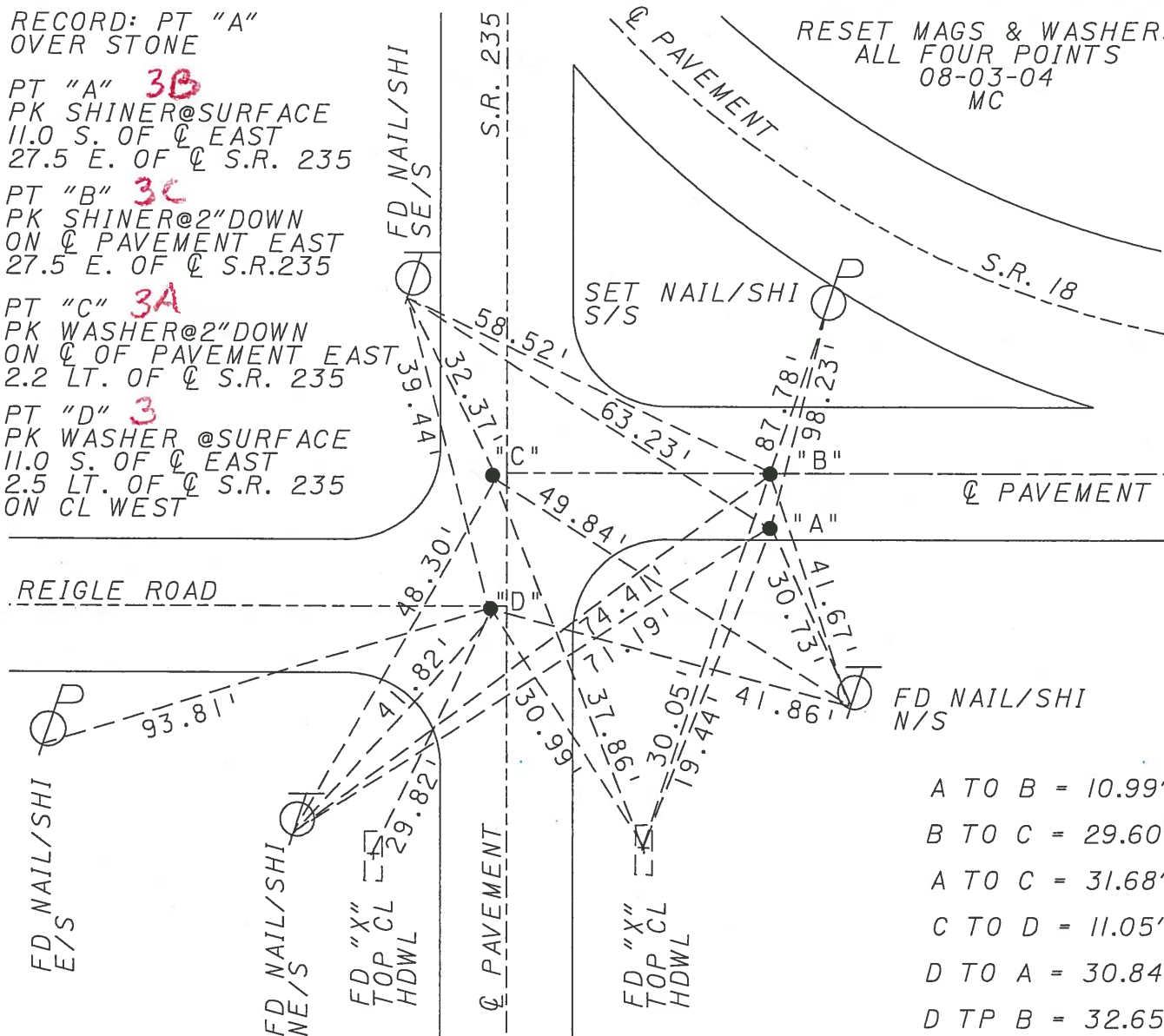
PT "A" **3B**
PK SHINER@SURFACE
11.0 S. OF ☐ EAST
27.5 E. OF ☐ S.R. 235

PT "B" **3C**
PK SHINER@2"DOWN
ON ☐ PAVEMENT EAST
27.5 E. OF ☐ S.R.235

PT "C" **3A**
PK WASHER@2"DOWN
ON ☐ OF PAVEMENT EAST
2.2 LT. OF ☐ S.R. 235

PT "D" **3**
PK WASHER @SURFACE
11.0 S. OF ☐ EAST
2.5 LT. OF ☐ S.R. 235
ON CL WEST

RESET MAGS & WASHERS
ALL FOUR POINTS
08-03-04
MC



- A TO B = 10.99'
- B TO C = 29.60'
- A TO C = 31.68'
- C TO D = 11.05'
- D TO A = 30.84'
- D TP B = 32.65'

O.D.O.T. DISTRICT 2 SURVEY OFFICE

PERSONNEL

REFERENCE NO. 3

SHEET 3 OF 3

NOTES OTTO

H.C. KUSZ

R.C. BARNHISEL

DATE 7-21-93

WEATHER cloudy

TEMP. +72°

ROUTE SR 18

COUNTY WOOD

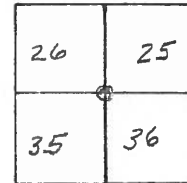
TOWNSHIP Jackson

SECTION 26

T 3 N R 9 E

SR 235

TYPE MONUMENT PK'S + WASHERS / PT "D" 1/2" I. PIN
 ON SURFACE - ~~BELOW~~ yes 2 1/2" Down
 LEFT- & PAVT. - RIGHT INFO. BELOW
 - TO - EDGE PAVEMENT
 S.L.M. PT "D" 53+90



Record: PT "A" OVER STONE

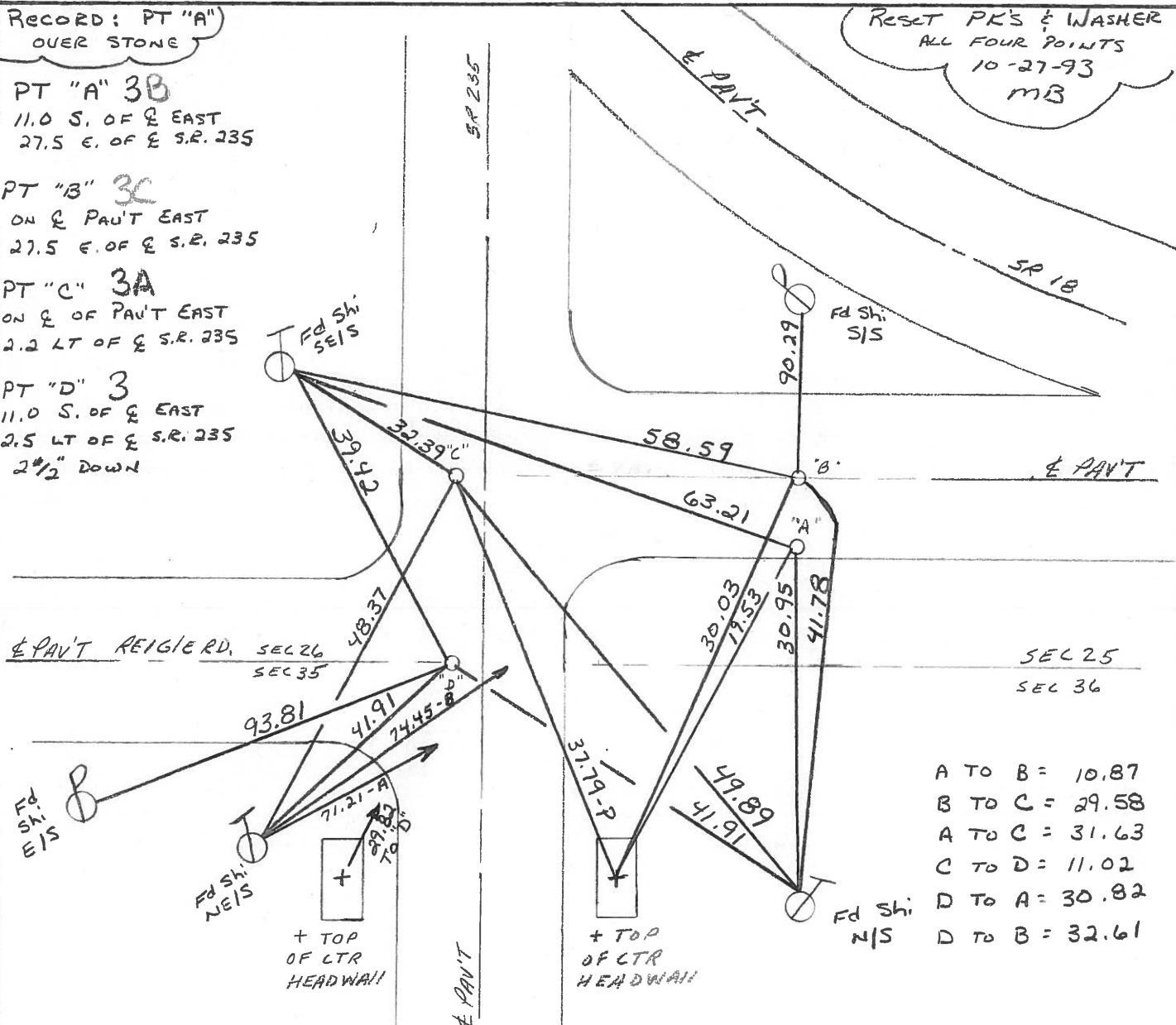
PT "A" 3B
 11.0 S. OF & EAST
 27.5 E. OF & S.R. 235

PT "B" 3C
 ON & PAVT EAST
 27.5 E. OF & S.R. 235

PT "C" 3A
 ON & OF PAVT EAST
 2.2 LT OF & S.R. 235

PT "D" 3
 11.0 S. OF & EAST
 2.5 LT OF & S.R. 235
 2 1/2" DOWN

RESET PK'S & WASHER ALL FOUR POINTS 10-27-93 MB



- A TO B = 10.87
- B TO C = 29.58
- A TO C = 31.63
- C TO D = 11.02
- D TO A = 30.82
- D TO B = 32.61

O.D.O.T. DISTRICT 2 SURVEY OFFICE

PERSONNEL

REFERENCE NO. 15

SHEET OF

NOTES BARNHSEL

H.C. Loehcke

DATE 3-19-91

ROUTE 18 & 235

R.C. HOFFMAN

WEATHER cloudy - Windy

COUNTY Wood

TEMP. +45°

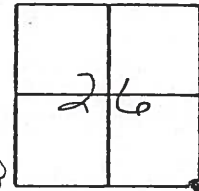
TOWNSHIP JACKSON

SECTION 26

T 3 N R 9 E

TYPE MONUMENT P.K.'s & Washers
 ON SURFACE - BELOW YES (ALL)
 LEFT- & PAV'T. - RIGHT INFORMATION Below
 - TO - EDGE PAVEMENT

PT. "D"
 1/2" IRON PIN
 1 1/2" DOWN



S.L.M. NOT COVERED IN 1991 RESURFACING OF S.R. 18

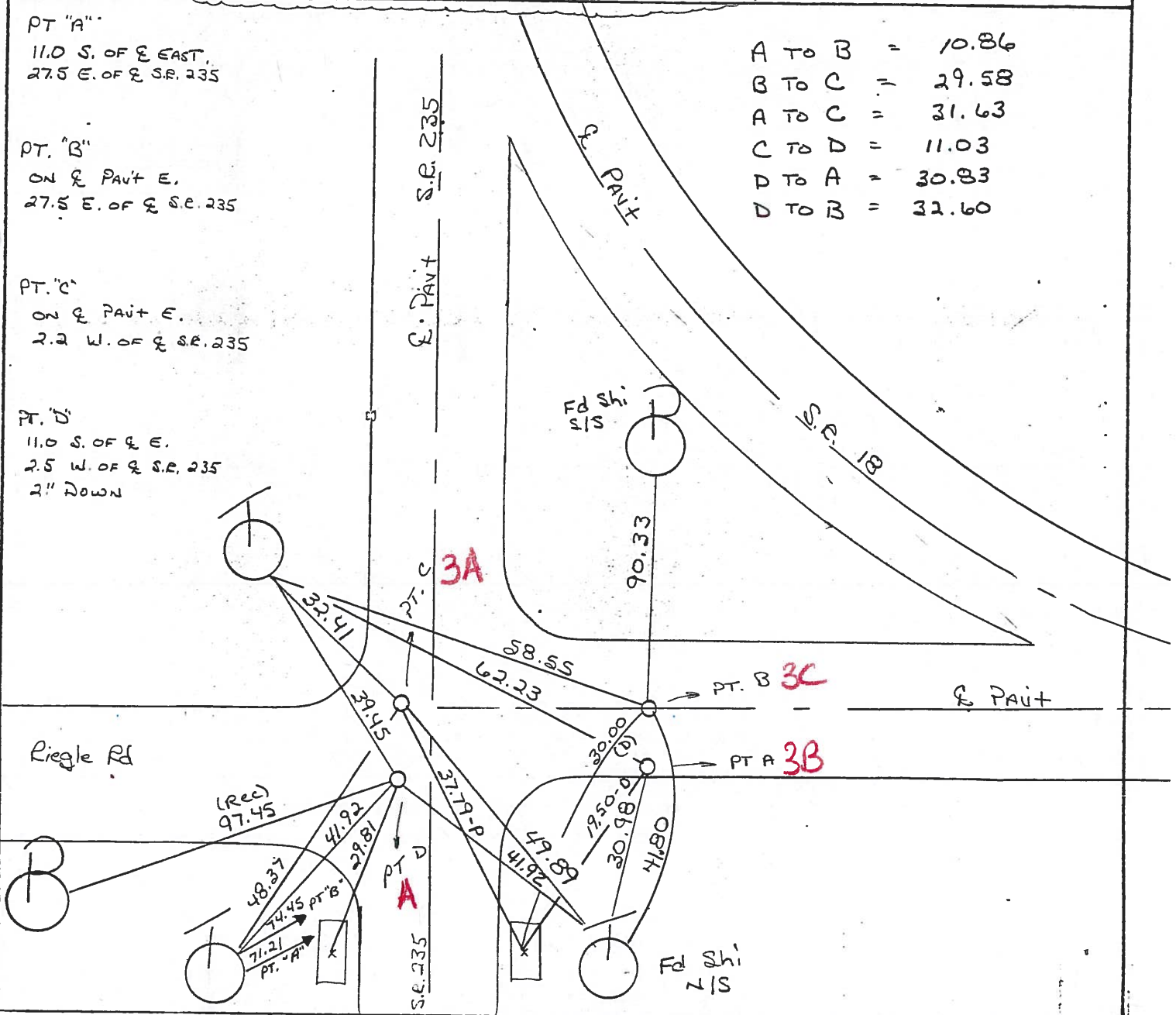
A TO B	=	10.86
B TO C	=	29.58
A TO C	=	31.63
C TO D	=	11.03
D TO A	=	30.83
D TO B	=	32.60

PT. "A"
 11.0 S. OF E EAST,
 27.5 E. OF E S.R. 235

PT. "B"
 ON E PAVT E,
 27.5 E. OF E S.R. 235

PT. "C"
 ON E PAVT E,
 2.2 W. OF E S.R. 235

PT. "D"
 11.0 S. OF E E,
 2.5 W. OF E S.R. 235
 2" DOWN



Ed "X" ON BOTH SIDES

Q.D.O.T. DISTRICT 2 SURVEY OFFICE

SHEET ~~13~~ OF

County WOOD S.R. 18

Date 11-28-83

Township JACKSON

Weather RAIN, CLOUDY

Section 26

Temp. +40°

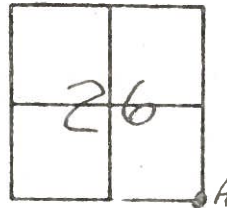
T N, R E

Personnel BARNHISEL

HOUSEHOLDER

LOEHRKE

#3

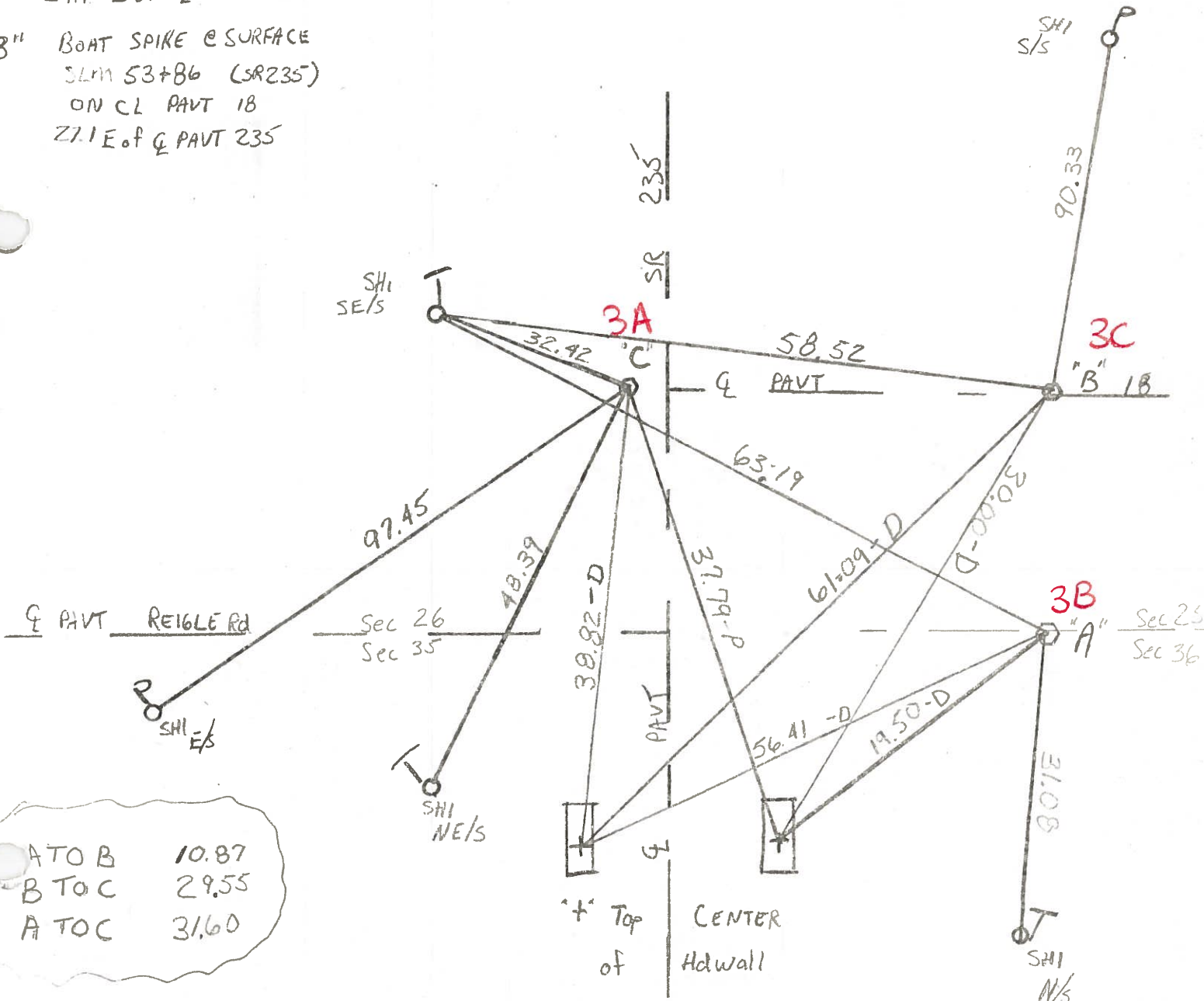


"A" RR SPIKE @ SURFACE OVER STONE
 SLM 53+75 (SR 235)
 10.9 S of Q PAVT 18 #15
 27.1 E of Q PAVT 235

"C" RR SPIKE @ SURFACE
 SLM 53+86 (SR 235)
 ON Q PAVT SR 18 E
 2.5' W of Q PAVT 235

#15

"B" BOAT SPIKE @ SURFACE
 SLM 53+86 (SR 235)
 ON CL PAVT 18
 27.1 E of Q PAVT 235



ATO B 10.87
 B TO C 29.55
 A TO C 31.60

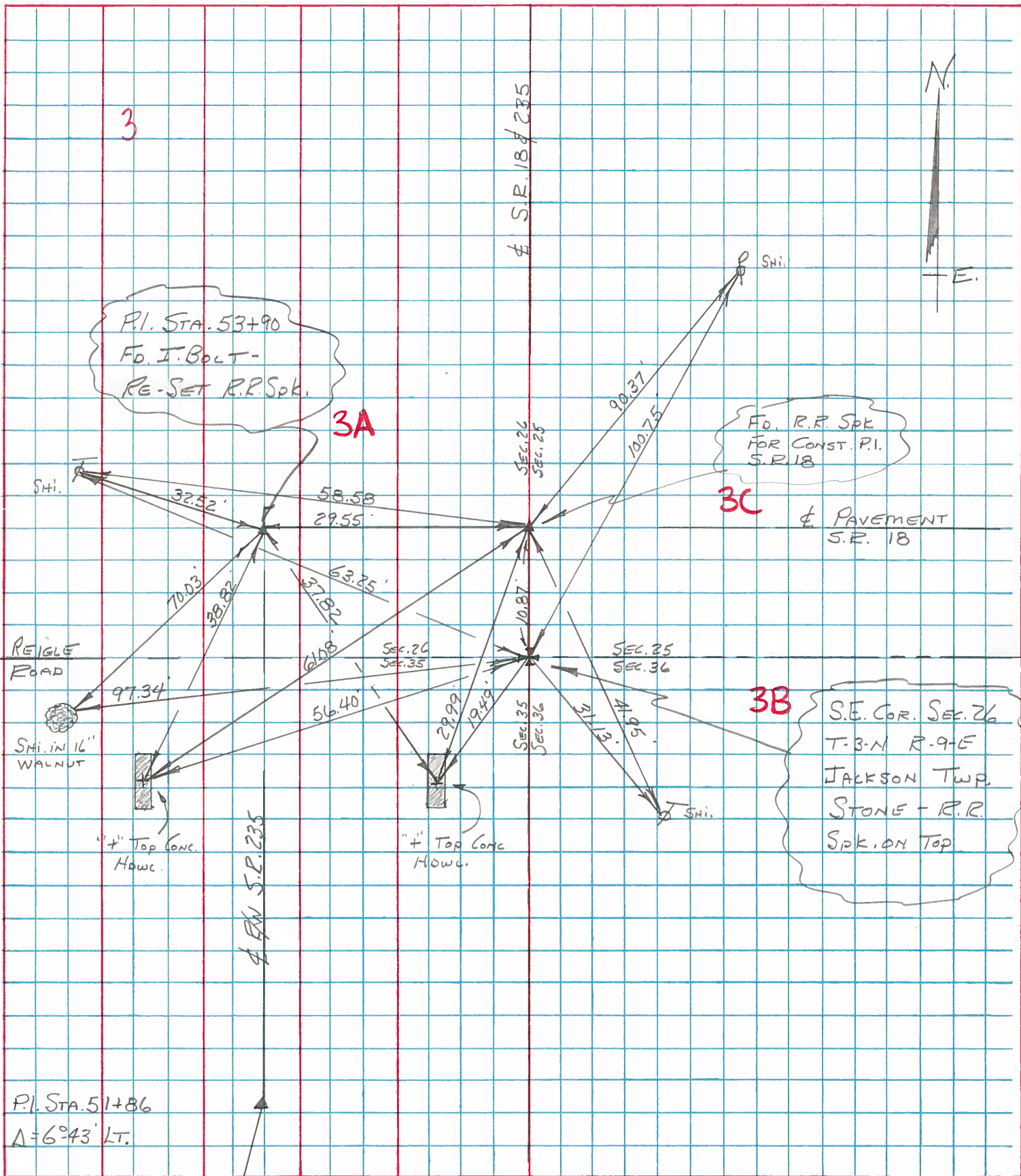
PERSONNEL	TITLE	PERSONNEL	TITLE
BURNSIDE			
SMITH			
BOWERS			
MEAD			

COUNTY WOOD DATE 12-8-75

S. R. 235 WEATHER CLOUDY

SEC. S.E. COR SEC. 26 JACKSON TWP TEMP. + 36°

DESCRIPTION CONTROL TIES @ S.R. 235 & S.R. 18 JOB NO. _____



P.I. STA. 51+86
 $\Delta = 6^\circ 43' \text{ LT.}$

PERSONNEL	TITLE	PERSONNEL	TITLE
BURNSIDE			
SMITH			
BOWERS			

COUNTY Wood DATE 5-1-72

S. R. 235 E 18 WEATHER SHOWERS

SEC. _____ TEMP. +62°

DESCRIPTION CONTROL POINTS @ S.R. 235 E 18 JOB NO. _____

