

O.D.O.T. DISTRICT 2 SURVEY OFFICE (USE ONLY)

PERSONNEL

REFERENCE NO. 4

SHEET 4 OF 26

NOTES NIESE

DATE 5/21/24

ROUTE SR 235

H.C. NIESE

WEATHER CALM

COUNTY WOOD

R.C. PRESTON-COLVIN

TEMP. 45°

TOWNSHIP JACKSON

SECTION 25

DWG BY BARRIERE PID 101290

T 3 N R 9 E

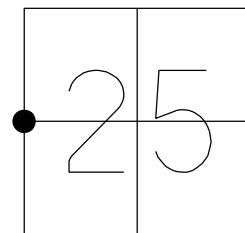
TYPE MONUMENT MAG NAIL/WASHER

ON SURFACE - BELOW ON

OFFSET  $\varnothing$  PAVEMENT ON LT : RT

TO EDGE PAVEMENT

STATION: 80+17.37



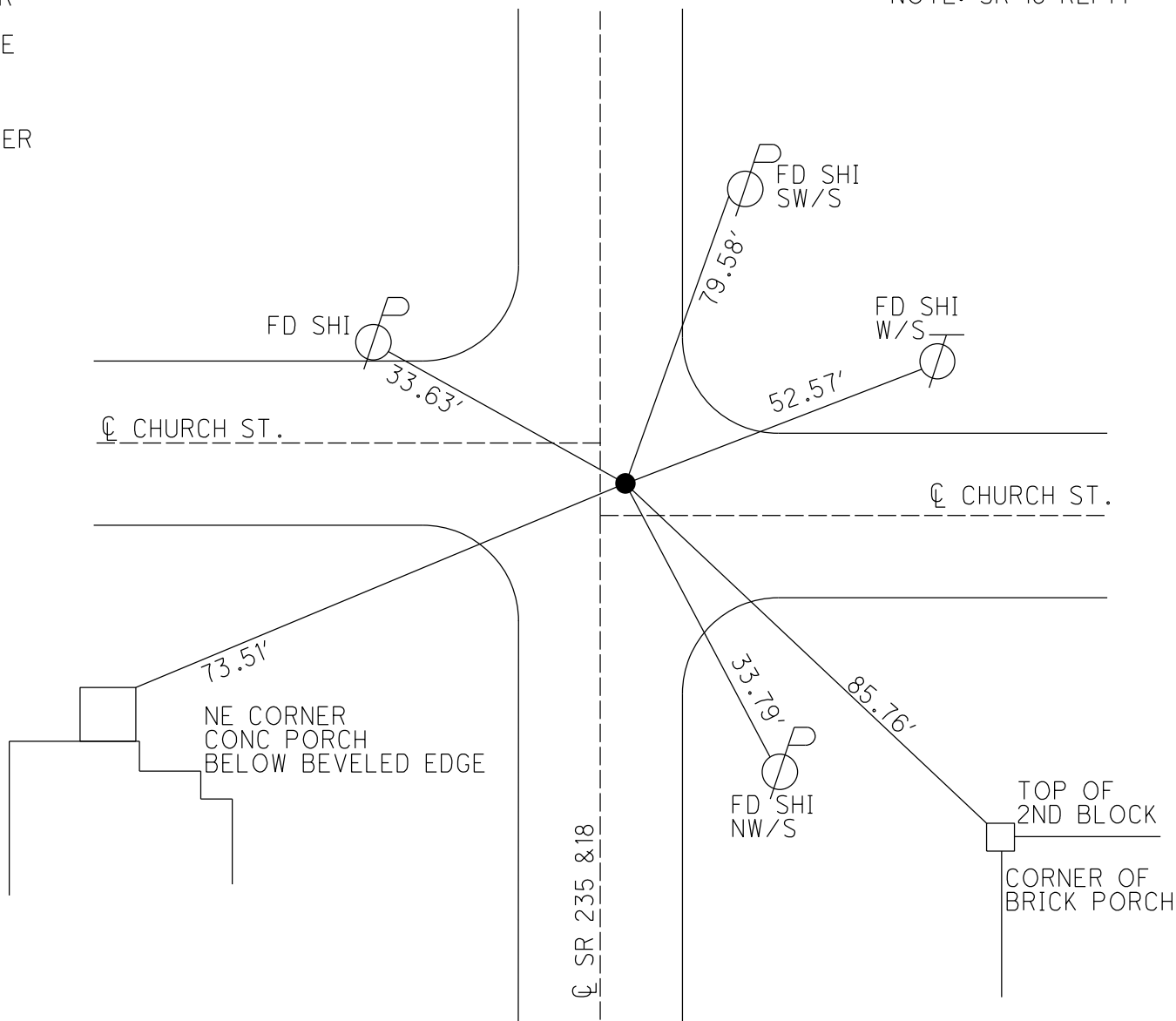
HORIZ.DATUM: NAD83(2011)/WOOD LDP GEOID: 2018

GRID: NORTHING: 378924.939 EASTING: 127076.686

LDP: NORTHING: 557574.922 EASTING: 1615044.014

RECORD:  
 SET PK/WASHER  
 4-17-91, MB  
 FD SM RR SPIKE  
 REF4  
 2/1/23, JAM  
 5/21/24, TDN  
 SET MAG/WASHER  
 10/28/24, TDN

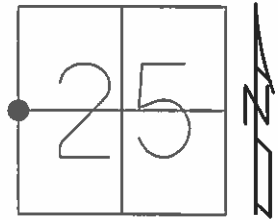
NOTE: SR 18 REF14



O.D.O.T. DISTRICT 2 SURVEY OFFICE (USE ONLY)

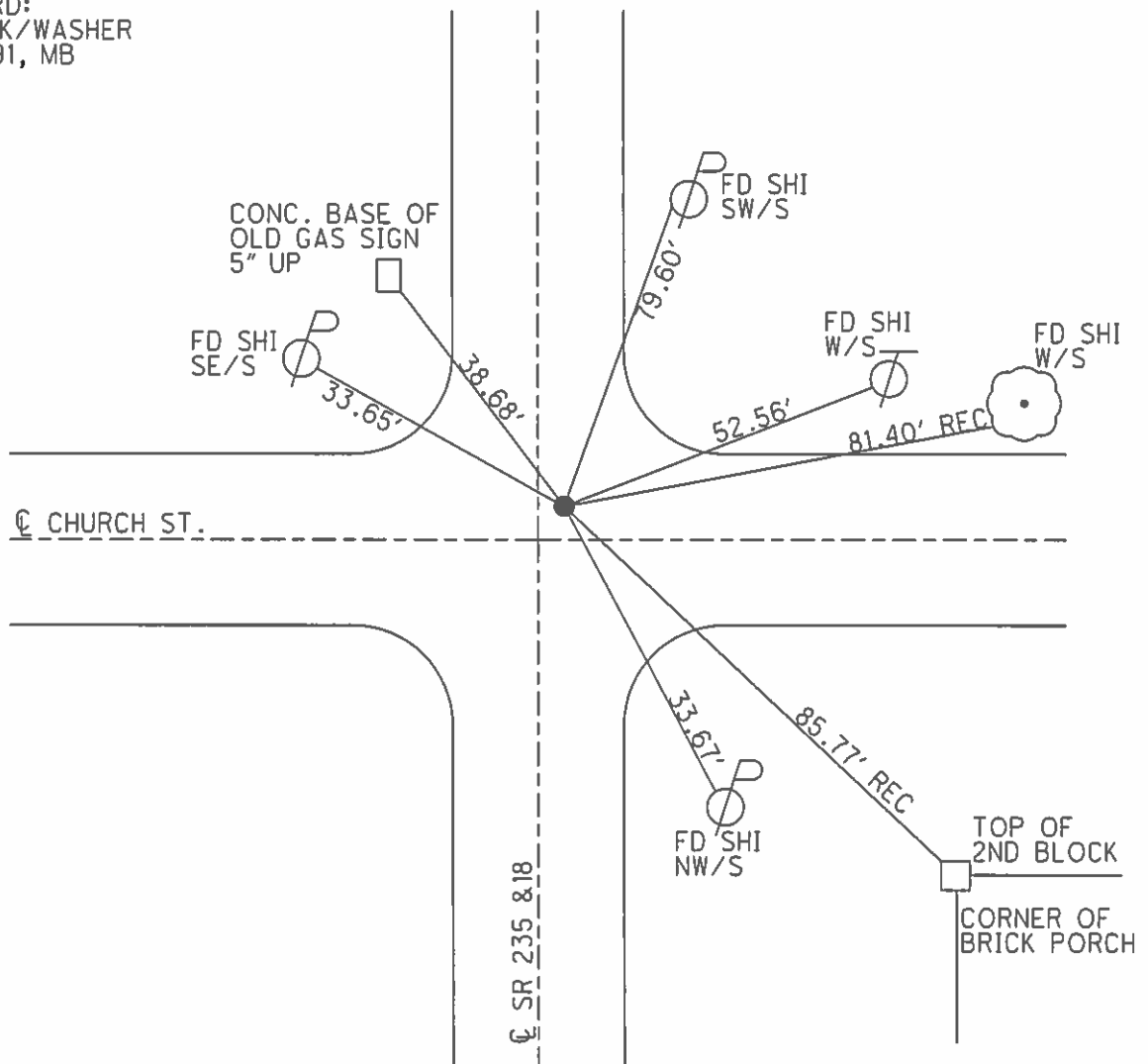
PERSONNEL \_\_\_\_\_ REFERENCE NO. 4 SHEET 1 OF 26  
 NOTES BARNHISEL DATE 3-19-91 ROUTE SR 235  
 H.C. LOEHRKE WEATHER CLDY WINDY COUNTY WOOD  
 R.C. HOFFMAN TEMP. 45°F TOWNSHIP JACKSON  
 \_\_\_\_\_ SECTION 25  
 \_\_\_\_\_ T 3 N R 7 E

TYPE MONUMENT PK/WASHER  
 ON SURFACE - ~~BELOW~~ ON \_\_\_\_\_  
~~LEFT~~ Q PAV'T - RIGHT 0.9'  
 \_\_\_\_\_ TO \_\_\_\_\_ EDGE PAVEMENT  
 S.L.M. 80+17.37



Grid: Northing: 557574.959 Easting: 1615044.096

RECORD:  
 SET PK/WASHER  
 4-17-91, MB



# O.D.O.T. DISTRICT 2 SURVEY OFFICE

PERSONNEL

REFERENCE NO. 14

SHEET      OF     

NOTES BARNHISEL

H.C. Loehke

DATE 3-19-91

ROUTE 18

R.C. HOFFMAN

WEATHER cloudy-windy

COUNTY WOOD

TEMP. +45°

TOWNSHIP JACKSON

SECTION 25

T 3 N R 7 E

TYPE MONUMENT P.K. & Washer

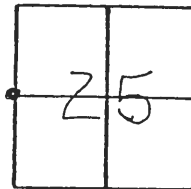
ON SURFACE - BELOW yes

LEFT - ☉ PAV'T. - RIGHT 0.9

— TO — EDGE PAVEMENT

S.L.M. 319+71 2.0 N. OF R.E.

4



Set P.K./Washer  
4-17-91  
MB

