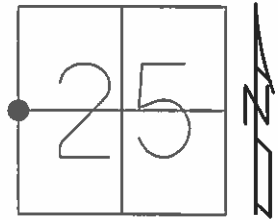


O.D.O.T. DISTRICT 2 SURVEY OFFICE (USE ONLY)

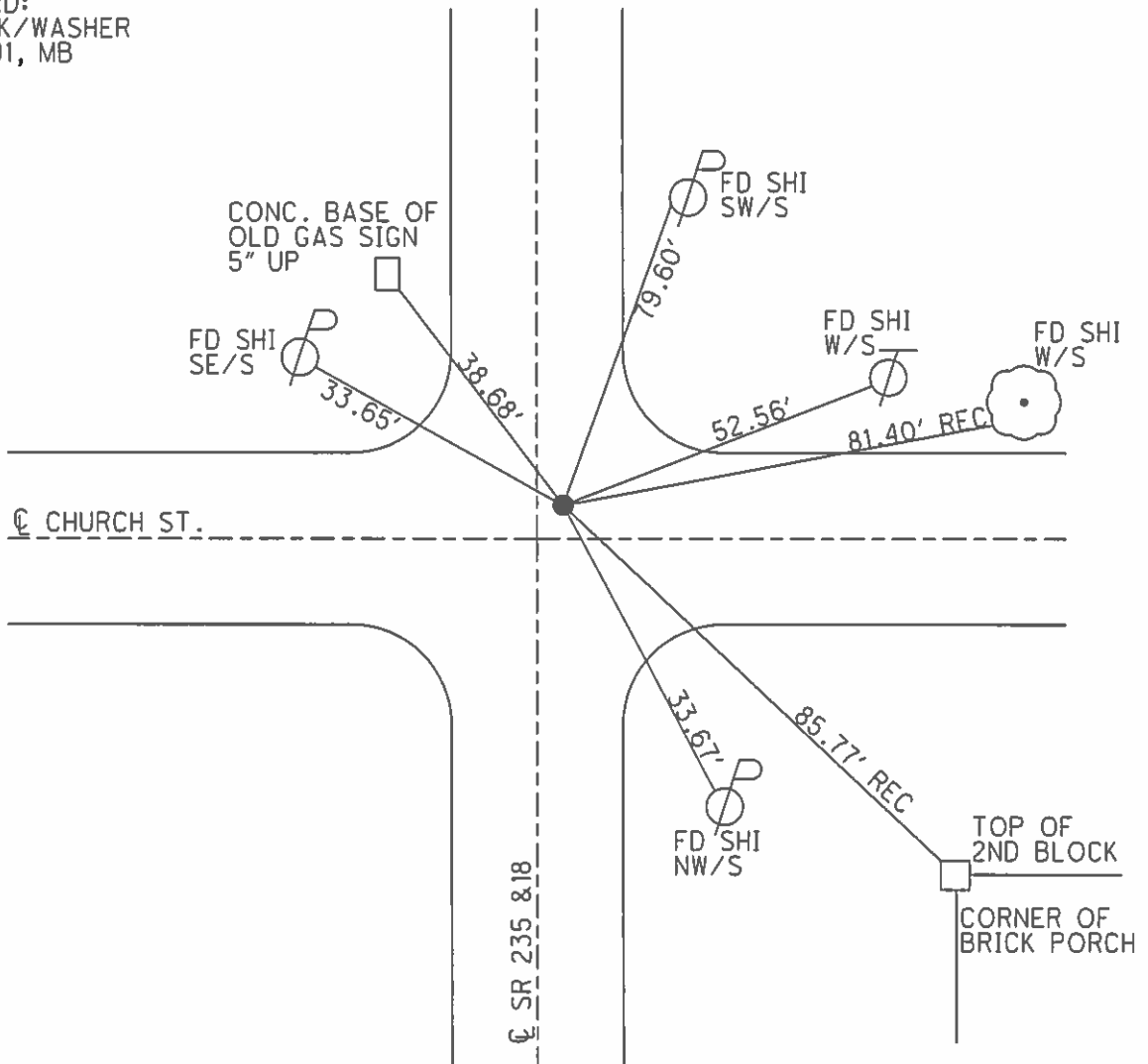
PERSONNEL \_\_\_\_\_ REFERENCE NO. 4 SHEET 1 OF 26  
 NOTES BARNHISEL DATE 3-19-91 ROUTE SR 235  
 H.C. LOEHRKE WEATHER CLDY WINDY COUNTY WOOD  
 R.C. HOFFMAN TEMP. 45°F TOWNSHIP JACKSON  
 \_\_\_\_\_ SECTION 25  
 \_\_\_\_\_ T 3 N R 7 E

TYPE MONUMENT PK/WASHER  
 ON SURFACE - ~~BELOW~~ ON \_\_\_\_\_  
~~LEFT~~ Q PAV'T - RIGHT 0.9'  
 \_\_\_\_\_ TO \_\_\_\_\_ EDGE PAVEMENT  
 S.L.M. 80+17.37



Grid: Northing: 557574.959 Easting: 1615044.096

RECORD:  
 SET PK/WASHER  
 4-17-91, MB



# O.D.O.T. DISTRICT 2 SURVEY OFFICE

PERSONNEL

REFERENCE NO. 14

SHEET      OF     

NOTES BARNHISEL

H.C. Loehke

DATE 3-19-91

ROUTE 18

R.C. HOFFMAN

WEATHER cloudy-windy

COUNTY WOOD

TEMP. +45°

TOWNSHIP JACKSON

SECTION 25

T 3 N R 7 E

TYPE MONUMENT P.K. & Washer

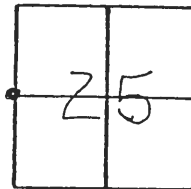
ON SURFACE - BELOW yes

LEFT - ☉ PAV'T. - RIGHT 0.9

— TO — EDGE PAVEMENT

S.L.M. 319+71 2.0 N. OF R.E.

4



Set P.K./Washer  
4-17-91  
MB

