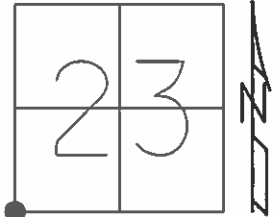


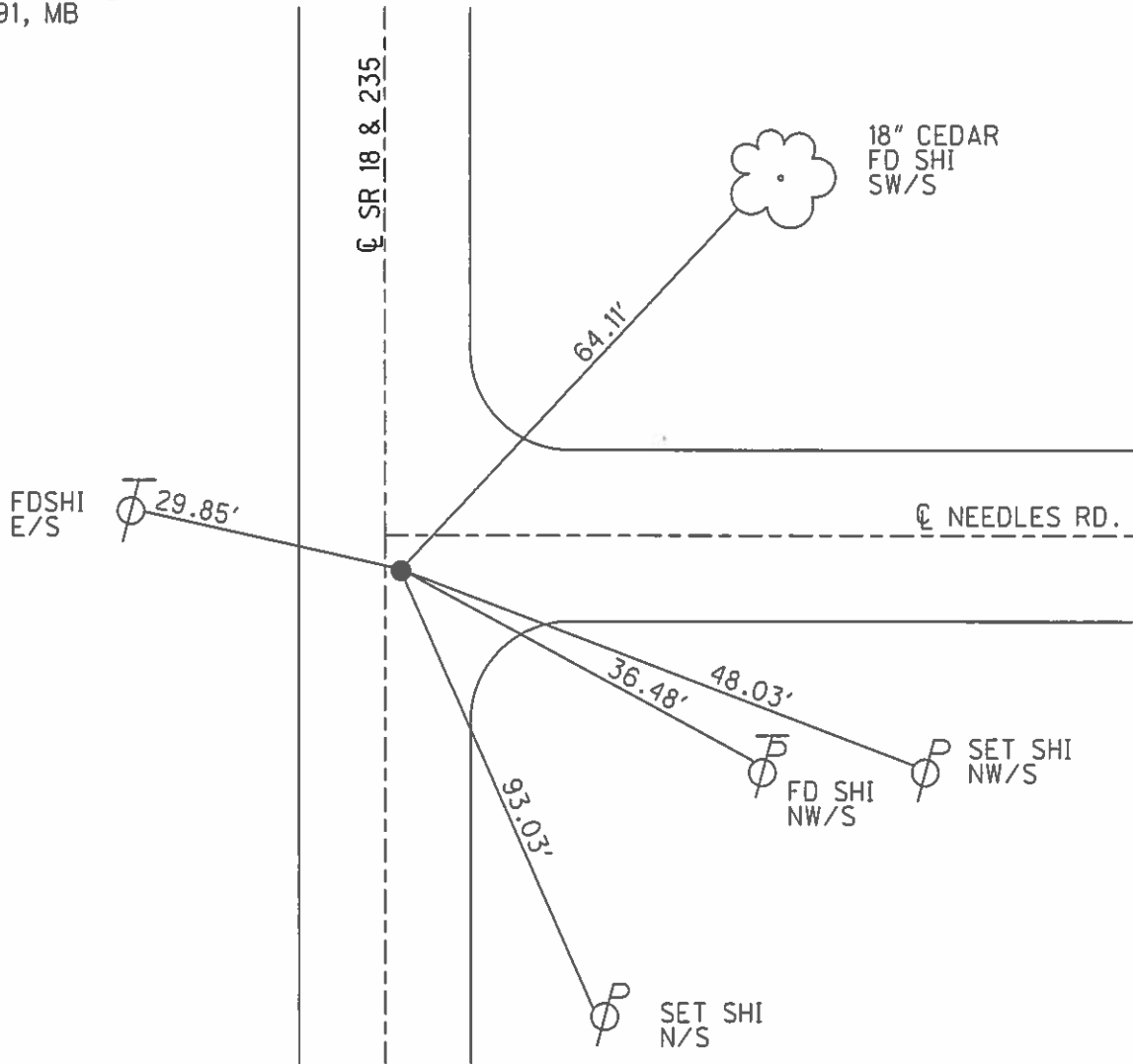
O.D.O.T. DISTRICT 2 SURVEY OFFICE (USE ONLY)

PERSONNEL _____ REFERENCE NO. 5 SHEET 2 OF 26
 NOTES HOMAN DATE 9-24-03 ROUTE SR 235
 H.C. NUHFER WEATHER CLDY COUNTY WOOD
 R.C. BALLMER TEMP. 60°F TOWNSHIP JACKSON
 _____ SECTION 23
 _____ T 3 N R 9 E

TYPE MONUMENT PK/WASHER
 ON SURFACE - ~~BELOW~~ ON _____
~~LEFT~~ - Q PAV'T - RIGHT 1.6'
11.5' TO RT EDGE PAVEMENT
 S.L.M. 106+47.77
 Grid: Northing: 560205.196 Easting: 1615073.094



SET PK/WASHER
 4-17-91, MB



O.D.O.T. DISTRICT 2 SURVEY OFFICE

PERSONNEL

REFERENCE NO. 13

SHEET 1 OF 23

NOTES Homan

DATE 9-24-03

ROUTE 18

H.C. Nuhfer

WEATHER Cloudy

COUNTY WOOD

R.C. Ballmer

TEMP. 60°

TOWNSHIP JACKSON

SECTION 23

T 3 N R 9 E

TYPE MONUMENT PK & Washer

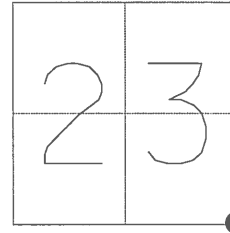
ON SURFACE - BELOW on surface

LEFT - ☉ PAV'T - ~~RIGHT~~ 1.6

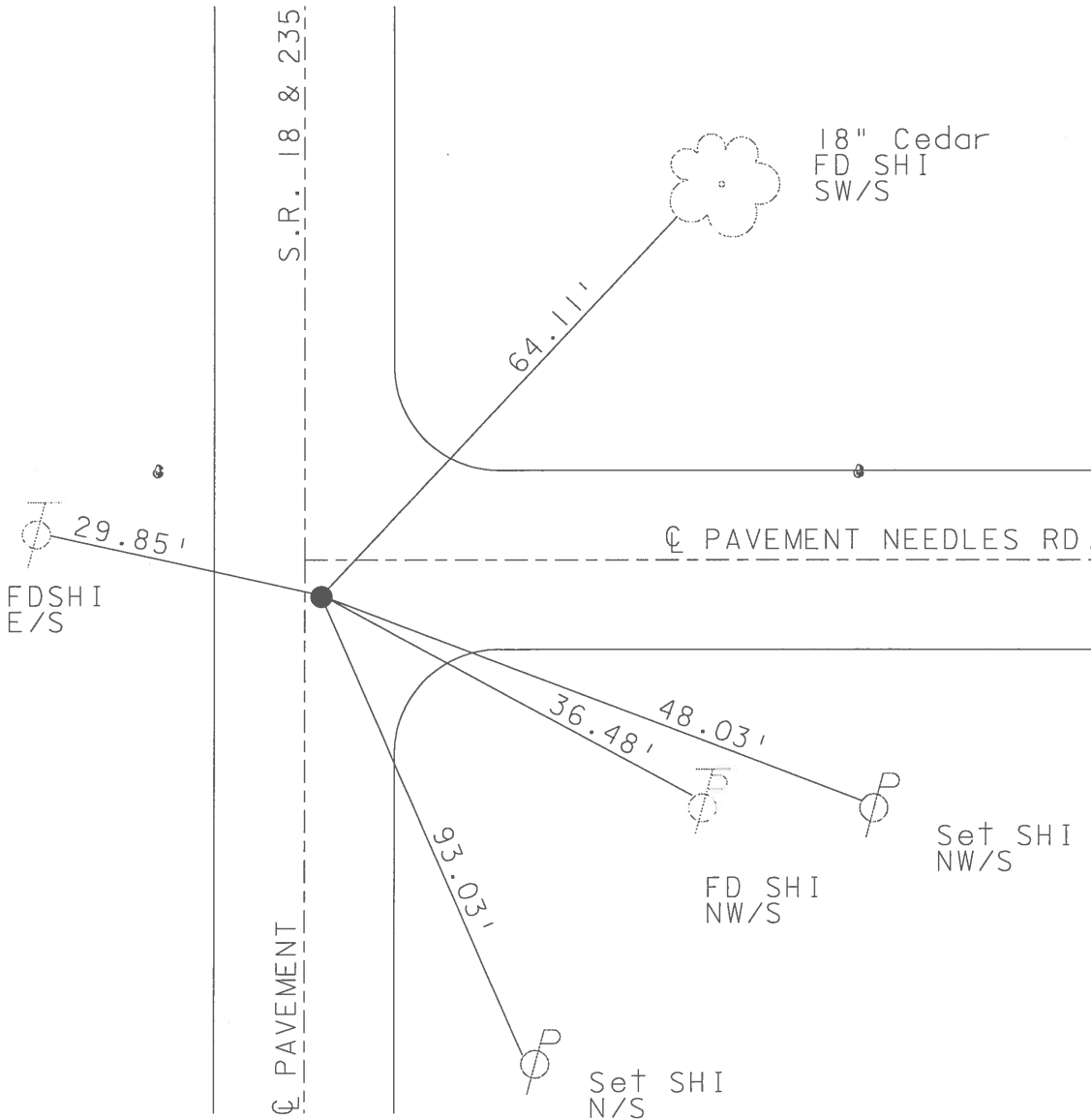
11.5 TO RT EDGE PAVEMENT

S.L.M. 293+39 3.0 S of ☉ Needles Rd

5



Set PK & Washer
4-17-91
MB



Resurfaced 2003 - Begun North of Point #4

O.D.O.T. DISTRICT 2 SURVEY OFFICE

PERSONNEL

REFERENCE NO. 13

SHEET OF

NOTES BARNHISEL

H.C. Loehke

DATE 3-19-91

ROUTE 18

R.C. HFFMAN

WEATHER cloudy - windy

COUNTY Wood

TEMP. +45°

TOWNSHIP Janet

SECTION 23

T 31 R 1

TYPE MONUMENT P.K. & Washer

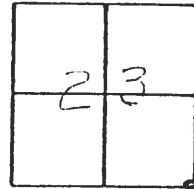
ON SURFACE - BELOW 4CS

LEFT - & PAV'T. - RIGHT 1.6

11.5 TO RT EDGE PAVEMENT

S.L.M. 293739

5



Set AK. / Washer
4-17-91
MAB

